



**01 Helmets, Luggage, Audio & More**



**02 Seat**



**03 Exhaust**



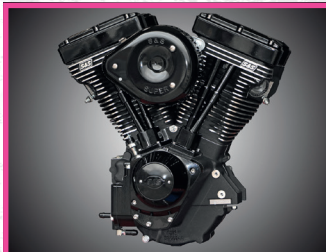
**04 Electric & Light**



**05 Engine Electrics**



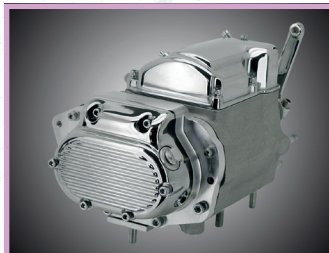
**06 Intake**



**07 Engine**



**08 Primary**



**09 Transmission**



**10 Final Drive**



**11 Wheels & Tire**



**12 Brake**



**13 Foot Control**



**14 Handlebar**



**15 Front Suspension**



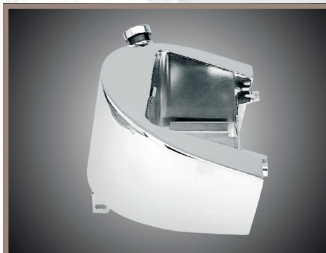
**16 Chassis/Frame & Shocks**



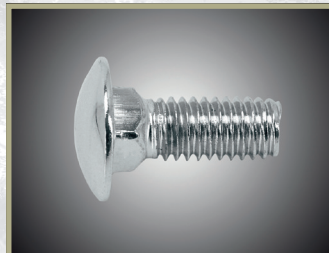
**17 Fender & Struts**



**18 Gas Tank & Instrument**



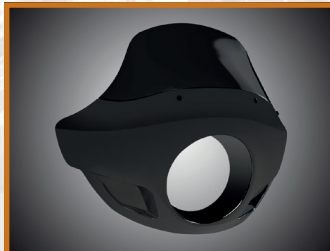
**19 Oil Tank, Filter & Line**



**20 Fasteners**



**21 Mirror**



**22 Windshield**



**23 Oil, Chemicals & Tools**

769050	05-062	35230-39
769051	05-062	35230-39
789376	05-069	35230-39
789377	05-069	35230-39
789378	05-069	35230-39
237921	09-061	35249-06
789216	09-061	35282-36
789217	09-061	35282-79
789218	09-061	35336-74
769075	09-061	35336-74
769076	09-061	35365-36

**24 Tips & Cross Ref OEM>Page**

005	234307	05-066	23467
006	234354	09-057	23467
007	234354	09-069	23467
008	234356	07-223	23467
009	234364	09-067	23467
010	234364	09-068	23467
011	234385	11-066	23467
012	234386	11-066	23467
013	234425	07-216	23467
014	234425	07-217	23467
015	234428	07-216	23467
016	234428	07-217	23467
017	234428	07-217	23467

**25 Cross Ref ZPN>Page**

Alcho	11-074
Metzeler	
Tire	
Mexican	01-057
Blanket	12-077, 21-023
Midwest Acorn	
Mikuni	01-058
Calendar	
MMB	
Digital Speedo	19-081
Mini Speedo & Tacho	19-081
Motor - Refer to Engine	
Motor Mount	21-023

**26 Alphabetical Index**



**Page 002 Quick Index**



**Online only: Blow Out Sales**

**01**  
HELMETS,  
LUGGAGE,  
AUDIO & MORE

**02**  
SEAT

**03**  
EXHAUST

**04**  
ELECTRIC  
& LIGHT

**05**  
ENGINE  
ELECTRICS

**06**  
INTAKE

**07**  
ENGINE

**08**  
PRIMARY

**09**  
TRANSMISSION

**10**  
FINAL DRIVE

**11**  
WHEELS &  
TIRE

**12**  
BRAKE

**13**  
FOOT  
CONTROL

**14**  
HANDLEBAR

**15**  
FRONT  
SUSPENSION

**16**  
CHASSIS/  
FRAME  
& SHOCKS

**17**  
FENDER  
& STRUTS

**18**  
GAS TANK &  
INSTRUMENT

**19**  
OIL TANK, FILTER  
& LINE

**20**  
FASTENERS

**21**  
MIRROR

**22**  
WINDSHIELD

**23**  
OIL, CHEMICALS  
& TOOLS

**24**  
TECHTIPS &  
CROSS REF  
> ZPN

**25**  
CROSS REF  
ZPN > PAGE

**26**  
ALPHABETICAL  
INDEX



**01 Complete indexes can be found in chapters:**  
**02 24 Tips & Cross Ref OEM > ZPN**  
**03 25 Cross Ref ZPN > Page**  
**04 26 Alphabetical Index**

## **01 HELMETS, LUGGAGE, AUDIO & MORE**

Calendar .....01-060  
 Clothing.....01-057  
 Footwear.....01-056  
 Hard Luggage.....01-059  
 Leather Luggage .....01-058  
 Luggage Straps.....01-058  
 Miscellaneous.....01-060  
 Soft Luggage .....01-057

## **02 SEAT**

Seat Accessories.....02-028  
 Seats .....02-028  
 Sissy Bars.....02-029

## **03 EXHAUST**

Exhaust Accessories.....03-122  
 Freedom Performance  
 Exhausts Dyna .....03-108  
 Freedom Performance  
 Exhausts Indian Scout...03-109  
 Freedom Performance  
 Exhausts Indian PowerPlus&  
 Thunderstroke .....03-110  
 Freedom Performance  
 Exhausts Softail .....03-104  
 Freedom Performance  
 Exhausts Sportster.....03-102  
 Freedom Performance  
 Exhausts Touring & Trike .03-102  
 Headers.....03-122  
 MCJ Exhausts .....03-117  
 Supertrapp Megaphone  
 Exhausts .....03-117  
 Two Brothers Racing ....03-114

## **04 ELECTRIC & LIGHT**

FLH Style Turn Signals...04-090  
 Headlight Mounts .....04-088  
 Headlights.....04-086  
 Horns & Sirens .....04-094  
 Light Accessories .....04-093

Light Bulbs & LEDs.....04-092  
 Spotlights & Drivelights .04-088  
 Stock Style Taillights ...04-090  
 Switches .....04-092  
 Taillights & License Plate  
 Brackets.....04-090  
 Turn Signals &  
 Marker Lights .....04-088  
 Turnsignal Mounts.....04-090  
 Wiring Connectors .....04-094  
 Wiring Harnesses &  
 Modules.....04-093

## **05 ENGINE ELECTRICS**

Batteries .....05-074  
 Generator Parts .....05-070  
 Ignition Parts .....05-068  
 Regulators & Charging  
 Systems.....05-072  
 Spark Plugs.....05-068  
 Starter Motor & Parts...05-073  
 Stator & Rotor.....05-073  
 VOES & Ignition Sensors .05-068

## **06 INTAKE**

Air Cleaners.....06-092  
 Carburetor Parts.....06-086  
 Carburetors.....06-086  
 Fuel Injection .....06-089  
 Manifolds .....06-090

## **07 ENGINE**

Cam Covers & Bushing...07-201  
 Cams for Twin Cam.....07-203  
 Connecting Rods .....07-201  
 Cylinder Heads .....07-208  
 Cylinders .....07-205  
 Engine Keys.....07-214  
 Gaskets & Seal Sets ....07-210  
 Motor Mounts.....07-209  
 Oil Pump, Cam Plate  
 & Cam Chain Drive .....07-200  
 Pistons & Piston Rings...07-205  
 Primary Gaskets  
 for Big Twin.....07-214  
 Pushrods .....07-204  
 Rocker Covers .....07-207  
 Rocker Parts .....07-207  
 Special & Big Bore  
 Gaskets .....07-209

Tappet Blocks .....07-202  
 Tappet Parts .....07-202  
 Tappets .....07-202

## **08 PRIMARY**

1938-1973 45CI  
 (W&G Models) Clutch ...08-080  
 1990-1997 Big-Twin  
 Clutch.....08-083  
 1998-2000 Evolution  
 Big-Twin & 1999-2017  
 Twin Cam Standard  
 6-Stud Clutch .....08-084  
 2013-2017 Twin Cam  
 & 2017 to present  
 Milwaukee Eight 3-Stud  
 "Assist&Slip" Clutch ....08-084  
 BDL Belt Drives.....08-082  
 Belt Drives.....08-082  
 Big-Twin 4 Speed  
 & Early  
 5 Speed Clutch .....08-083  
 Derby & Inspection  
 Covers .....08-079  
 Late 1984-1989  
 Big-Twin  
 5-Speed Clutch.....08-085  
 Motor Sprockets .....08-079  
 Primary Housing  
 & Covers.....08-078  
 Primo Belt Drives .....08-079

## **09 TRANSMISSION**

4 Speed Transmissions...09-061  
 45CI Transmission Parts..09-060  
 Kickstart Kit & Parts....09-070  
 Transmission Parts  
 4 Speed Big-Twin.....09-062  
 Transmission Parts  
 5 Speed Big-Twin.....09-063  
 Transmission Parts  
 2006-present 6 Speed...09-070  
 Transmission Parts for  
 4 Speed Sportster.....09-068

## **10 FINAL DRIVE**

Final Drive Chain  
 Sprockets.....10-022  
 Final Drive Belt Sprockets 10-023  
 Sprocket Hardware.....10-022

## **11 WHEELS & TIRE**

Avon Tires .....11-071  
 Axles & Hardware.....11-070  
 Metzeler Tires .....11-072  
 Spokes.....11-067  
 Wheel Adjusters &  
 Axle Plates .....11-071  
 Wheel Assemblies .....11-062  
 Wheel Hubs.....11-068  
 Wheel Rims.....11-065

## **12 BRAKE**

Caliper Parts .....12-070  
 Disc Brake Calipers.....12-072

## **13 FOOT CONTROL**

Brake Pedals &  
 Backing Plates .....13-063  
 Floorboards.....13-063  
 Forward Control .....13-066  
 Peg Supports .....13-062  
 Rear Brake Master  
 Cylinder.....13-064  
 Rear Sets.....13-060  
 Shift & Foot Pegs .....13-062  
 Shifter Parts .....13-063

## **14 HANDLEBAR**

7/8 Inch (22mm)  
 Handlebars .....14-118  
 Control Cables.....14-127  
 Fat Handlebars .....14-116  
 Grip Sets .....14-121  
 Handlebar Controls .....14-122  
 Handlebar Parts .....14-120  
 Handlebar Risers .....14-120  
 Lever Blades .....14-122  
 One Inch Diameter  
 Handlebars .....14-112

## **15 FRONT SUSPENSION**

Front Forks .....15-052  
 Fork Springs &  
 Lowering Kits .....15-052  
 Slider Covers .....15-054  
 Springer Fork  
 Accessories .....15-053  
 Springer Front Fork .....15-050  
 Wide Glide Kits &  
 Triple Trees .....15-053



## 16 CHASSIS/FRAME & SHOCKS

Center & Rear Stands . . . 16-068  
Chassis Stabilizer . . . . . 16-067  
Crash/Highway Bars . . . . 16-069  
Frame Accessories . . . . . 16-069  
Hardtail Conversions . . . . 16-067  
Kickstand Parts . . . . . 16-068  
Raw Metal . . . . . 16-067  
Shocks . . . . . 16-068  
Super Ass Frame . . . . . 16-066  
Swingarms . . . . . 16-067

## 17 FENDER & STRUTS

Fender Accessories . . . . 17-029  
Front Fenders . . . . . 17-026  
Rear Fenders . . . . . 17-026  
Struts . . . . . 17-030

## 18 GAS TANK & INSTRUMENT

Dash & Dash Panel . . . . 18-076  
Drive Unit & Cable . . . . 18-078  
Fuel Pump . . . . . 18-074  
Fuel Valves . . . . . 18-073  
Gas Cap & Cover . . . . . 18-074  
Gas Tank . . . . . 18-072  
Speedo & Tacho . . . . . 18-077  
Tank Emblems . . . . . 18-073

## 19 OIL TANK, FILTER & LINE

Oil Tank . . . . . 19-022  
Oil/Fuel Line & Fitting . . . 19-022

## 20 FASTENERS

Anti-Vibration Mounts . . . 20-026  
Hardware & Assortment  
Trays . . . . . 20-024  
Hardware Kits . . . . . 20-024

## 21 MIRROR

Mirror Accessories . . . . 21-014  
Mirrors . . . . . 21-014

## 22 WINDSHIELD

Fairings . . . . . 22-025  
Windshields . . . . . 22-024

## 23 OIL, CHEMICALS & TOOLS

Catalog, Signs & Flags . . . 23-068  
Diagnostic, Tuning  
& Fuel Injection Tools . . . 23-066  
Electrical System Tools . . 23-067  
Final Drive Tools . . . . . 23-067  
Manuals . . . . . 23-068  
Motorcycle Lift . . . . . 23-068  
Oil Pump & Oil Filter  
Tools . . . . . 23-067  
Standard & Universal  
Tools . . . . . 23-066  
Tie Downs & Locks . . . . 23-059  
Transmission Tools . . . . 23-067  
Valve Train Tools . . . . . 23-067  
Wheel & Tire Tools . . . . 23-068

01  
HELMETS,  
LUGGAGE,  
AUDIO & MORE

02  
SEAT

03  
EXHAUST

04  
ELECTRIC  
& LIGHT

05  
ENGINE  
ELECTRICS

06  
INTAKE

07  
ENGINE

08  
PRIMARY

09  
TRANSMISSION

10  
FINAL DRIVE

11  
WHEELS &  
TIRE

12  
BRAKE

13  
FOOT  
CONTROL

14  
HANDLEBAR

15  
FRONT  
SUSPENSION

16  
CHASSIS/  
FRAME  
& SHOCKS

17  
FENDER  
& STRUTS

18  
GAS TANK &  
INSTRUMENT

19  
OIL TANK, FILTER  
& LINE

20  
FASTENERS

21  
MIRROR

22  
WINDSHIELD

23  
OIL, CHEMICALS  
& TOOLS

24  
TECHTIPS &  
CROSS REF  
> ZPN

25  
CROSS REF  
ZPN > PAGE

26  
ALPHABETICAL  
INDEX





**ZODIAC INTERNATIONAL B.V.**  
International Marketing of High Technology Performance Products for Harley-Davidson®

### ESTABLISHED IN 1969

Parts and accessories for Harley-Davidson motorcycles from Europe's Largest Warehouse Distributor.

### 50 YEARS

Zodiac represents more than 50 years of experience in supplying and distributing the highest quality replacement parts and accessories for Harley-Davidson motorcycles. Zodiac is a wholesale and Distribution Company and only supplies directly to our list of authorized dealers, whom can be found in the European Dealer Locator on our website: <https://zodiac.nl/dealers>

### MORE THAN JUST DISTRIBUTION

For the past half century Zodiac has built its reputation as the world's leading supplier of high quality aftermarket parts, performance parts and accessories for Harley-Davidson motorcycles. We can proudly say that we have set the highest standards for the aftermarket industry. We have always been one step ahead of the competition and continue to do so. We are constantly searching for the best quality products the market has to offer.

### 2 YEARS WARRANTY

Because we stand behind the quality of our products, we give a 2 years warranty on a lot of our Genuine Zodiac Products. Look for the logo above these products.

### SUPER SERVICE AND FAST DELIVERY

Our goal is to provide our dealers with the best possible service. Our 40,000 square foot warehouse facility allows us to store over forty thousand different items with a value of millions of Euros. Computerized order processing ensures a dealer's order is normally picked & packed and ready to go within 3 hours from ordering.

### IMPORTANT NOTICES FROM ZODIAC

All motorcycle brand names like Harley-Davidson, etc., as used in this catalog, are used for reference only. It simply implies that these parts can be used on your customer's motorcycle. The products in this catalog are not produced by or with the permission of the Harley-Davidson motor corporation or any other motor corporation.

### PART FITMENT, INSTALLATION AND LIABILITY POLICY

All parts contained in this catalog must be installed by a qualified mechanic in accordance with the original equipment manufacturers service manual. It is also important that you, as a dealer, make sure the proper part is selected for the right purpose. Refer to the original equipment manufacturers service manual for normal and ordinary maintenance. For their own protection, dealers should inform their customers of this policy. If not ridden or maintained properly, motorcycles can be dangerous. Zodiac therefore expects the retailer/dealer and their customers to exercise good judgment as to the proper selection, installation, use and maintenance of any parts.

Zodiac assumes no responsibility for damage or injury of any kind arising from misuse or improper application of any parts in any way by any person. Unless specifically stated, Zodiac has no control over the manufacturing, testing or usage of any part sold, therefore the manufacturer will be responsible for any and/or all claims for damage to person(s) or property arising from design, manufacturing, and testing of its products. In no event will Zodiac be liable for consequential or indirect damages.

### FITMENT INFORMATION

We have indicated fitment to the best of our knowledge at the time of print approving. Due to our catalog publication schedule we were unable to confirm all fitments for our products. There are however, many items that will fit a later model than indicated in the catalog. Also check fitment with your Zodiac dealer whenever a part fitment is listed "to present".

**Note:** It is the dealer's responsibility to make sure the proper part is selected for the right purpose.

### THE ZODIAC DEALER LOUNGE

The Zodiac Dealer Lounge is our latest improvement for our dealers. Based on our proven powerful online catalog, searching and ordering parts is now faster and easier than ever before. No dealer account yet? Contact your Zodiac sales office for your login details.

### ZODIAC ONLINE CATALOG

The fastest and easiest way to find parts and accessories is with the all new Zodiac Online Bikers Book. You can browse through it as easy as leafing through this printed catalog. Updated daily, so always up-to-date with the latest parts and fitment information. And by using the most powerful search engine in the industry, you can find the right part for the right bike in no time!

Try it out yourself at:

<https://catalog.zodiac.nl>



**2 YEARS WARRANTY**

