



Le Pera Seats

02-002



Seats

02-015



Pillion Pads

02-017



Seat Accessories

02-018



Sissy Bars

02-022

02

01
HELMETS,
LUGGAGE,
AUDIO & MORE02
SEAT03
EXHAUST04
ELECTRIC
& LIGHT05
ENGINE
ELECTRICS06
INTAKE07
ENGINE08
PRIMARY09
TRANSMISSION10
FINAL DRIVE11
WHEELS &
TIRE12
BRAKE13
FOOT
CONTROL14
HANDLEBAR15
FRONT
SUSPENSION16
CHASSIS/
FRAME
& SHOCKS17
FENDER
& STRUTS18
GAS TANK &
INSTRUMENT19
OIL TANK, FILTER
& LINE20
FASTENERS21
MIRROR22
WINDSHIELD23
OIL, CHEMICALS
& TOOLS24
TECHTIPS &
CROSS REF
> ZPN25
CROSS REF
ZPN > PAGE26
ALPHABETICAL
INDEX



ABOUT LE PERA

Le Pera seats available from stock have black Naugahyde vinyl seating and side skirts. Le Pera seats are also available in many colors or combination of colors, with or without chrome studs, plain or accented leather, flames, checkers, etc., etc., Customized Le Pera Seats can also be made to order and in your specifications. Let your dealer know all details you want, like seat style, color, graphic stitch and color, with or without studs, your model of bike etc., and he will quote you a price.

Note: On Special Ordered/Manufactured seats we require a 50% deposit. Delivery takes generally 8 weeks, but they are really worth waiting for.

Once the order is placed and in the production process, it can not be cancelled nor changed.

CUSTOMIZE YOUR LE PERA SEAT

Take a look at these Impressions and choose your style in these sections:

Biker Gel

Material Options:

- Vinyl
- Leather
- Exotic Embossed Vinyl
- Exotic Embossed Leather
- Sport Material
- Metal Flake
- "Tooled Look" Embossed Leather

Stitch Graphics

Exotic Inlays

Inlay Inspiration

Embossed Inspiration

- Leather/Vinyl Inspiration
- Metal Flake Inspiration Let your dealer know all details you want, like seat style, color, graphic stitch and color, with or without studs, your model of bike etc., and he will quote you a price. Refer to the picture/number of your preference.



LE PERA'S SPRING MOUNTED SOLO SEATS

Spring mounted seats are the true Classic Custom. Created in the early 1900's these seats have yet to go out of style. Seats and Pillions are sold individually. Large Solo measures approx. 13"x15", Small Solo measures approx. 9"x12".



232849 Spring mounted Large Solo



232869 Spring mounted Small Solo



232870 Small Pillion 4 1/2"x9"



232872 Large Pillion 5 1/2"x10"



NEW

232860



232861

232862



LE PERA BARON II SEATS FOR RIGID FRAMES

A true Le Pera classic, these King & Queen-style rigid frame seats will complement any classic build. Seats measure 10" (25.4 cm) wide for driver and 6 3/4" (17.1 cm) wide for passenger. Universal custom fit.

232860 Buttressed rigid frame seat

232861 Diamond rigid frame seat

232862 Pleated rigid frame seat



LE PERA'S STUBS CAFE SEAT FOR SPORTSTER

Cafe Racer style has never been more popular. Le Pera's birching little Stubs Cafe seat is everything a seat like this should be and absolutely nothing more. Features tapered tail section, Old Skool accent piping, deep angled back support and the right amount of gap between seat and tank. In short it is just plain killer.

Note: There will be a 1.5" (3.8cm) gap between the seat and the tank on all models with a 3.3 Gallon tank.

742947 Fits all 2010 to present XL Sportster models



Le Pera

LE PERA'S STUBS SPOILER SEAT FOR SPORTSTER

The stubs spoiler takes the killer cafe style to new heights. Think of it as a cafe seat gone rock n' roll. The bitchin' kicked up tail section is highlighted by speed stripes in a tight, slammed package that shows off, not hides just how perfect the stance of your bike is. This seat needs to be seen in the flesh to fully appreciate just how killer it really is. All black and available to special order with speed stripes and pleats in a bunch of colors!

Note: There will be a 1.5" (3.8cm) gap between the seat and the tank on all models with a 3.3 Gallon tank.

742948 Fits all 2010 to present XL Sportster models



742942



742364
742365

Le Pera

LE PERA'S BARE BONES FOR SPORTSTER

Pure and aggressive styling. The Bare Bone is nearly the lowest production seat available, only the Bare Bones LT's are lower. Tapered to the extreme, it gets your feet on the ground.

Bare Bones

239104 Fits 1982 thru 2003 Sportster

741482 Fits 2004 thru 2006 & 2010 to present XL Standard with 3.5 Gallon tank

741483 Fits 2004 thru 2006 & 2010 to present XL Custom with 4.5 Gallon tank

742364 Fits 2007 thru 2009 XL Standard with 3.5 Gallon tank

742365 Fits 2007 thru 2009 XL Custom with 4.5 Gallon tank

742942 Fits 2011 to present XL1200X Forty-Eight

Bare Bones LT

236104 Fits 1982 thru 2003 Sportster



741431 5 1/2" Wide Pillion for Bare Bones and Bare Bones LT, fits 1982 thru 2003 Sportster



Le Pera

LE PERA STREAKER SEAT FOR SPORTSTER

Classic styled solo seat with a powder coated steel base.

Fits 2010 to present XL Sportster models

743867 Smooth

743868 Diamond stitching

743869 Pleated stitching



Le Pera

LE PERA SILHOUETTE SOLO SEAT FOR SPORTSTER

Smooth flowing solo seat with a tapered low profile allowing it to fit into any Sportster style.

232878 Fits 1982 thru 2003 Sportster

742377 Fits 2004 thru 2006 & 2010 to present XL Standard

742378 Fits 2004 thru 2006 & 2010 to present XL Custom

742368 Fits 2007 thru 2009 XL Standard

742369 Fits 2007 thru 2009 XL Custom



Le Pera

LE PERA'S VILLAIN SEAT FOR SPORTSTER

Le Pera's Villain is a polarizing design that will make heads turn. It is a truly unique seat that will completely change the look of your bike. Take a good look at the picture. If you dig it, believe us when we say, it's going to get attention! The seat comes standard in black with black stitch. Passenger seating area is 6 1/2" (16.5cm) wide.

Fits XL 883, XL883N Iron, XL883L Low, XL883R,

XL1200N Nightster with stock 3.3 Gallon tank

742938 Fits 2004 thru 2006 & 2010 to present

742940 Fits 2007 thru 2009

Fits XL883C Custom, XL1200C Custom, XL1200L

Low, XL1200R Roadster with stock 4.5 Gallon tank

742939 Fits 2004 thru 2006 & 2010 to present

742941 Fits 2007 thru 2009



Le Pera

LE PERA SILHOUETTE FOR SPORTSTER

Sleek styled flow, connecting the tank and fender. The tapered low profile allows it to fit into any "Sporty" style. Available in plain, basket weave only for early models.

232882 Plain, fits 1982 thru 2003 Sportster

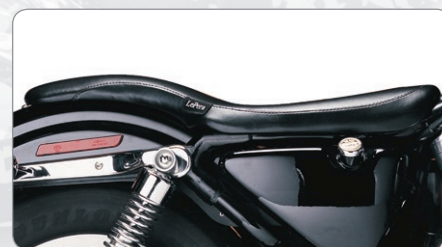
232785 Basket weave, fits 1982 thru 2003 Sportster

741484 Plain, fits 2004 thru 2006 & 2010 to present XL-Standard

741485 Plain, fits 2004 thru 2006 & 2010 to present XL-Custom

742370 Plain, fits 2007 thru 2009 XL-Standard

742371 Plain, fits 2007 thru 2009 XL-Custom



Le Pera

LE PERA'S KING COBRA FOR SPORTSTER

No other seat creates such a beautiful flow over the Sportster fender. By far the cleanest seat for the Sporty.

239112 Fits all XL models 1982 thru 2003, except 1996 XL1200

741486 Fits XL Standard models 2004 thru 2006 & 2010 to present

741487 Fits XL Custom models 2004 thru 2006 & 2010 to present

742372 Fits XL Standard 2007 thru 2009

742373 Fits XL Custom 2007 thru 2009



743862

Le Pera

LE PERA SPROCKET SEAT FOR SPORTSTER

Sinfully Bobbed & Chopped design solo seat. Bobbing back to one of the most popular 1970's designs of Le Pera it creates more back support for highway driving. Features a powder coated steel base.

Fits 2010 to present XL Sportster models

743861 Smooth

743862 Diamond stitching

743863 Pleated stitching

01
HELMETS,
LUGGAGE,
AUDIO & MORE

02
SEAT

03
EXHAUST

04
ELECTRIC
& LIGHT

05
ENGINE
ELECTRICS

06
INTAKE

07
ENGINE

08
PRIMARY

09
TRANSMISSION

10
FINAL DRIVE

11
WHEELS &
TIRE

12
BRAKE

13
FOOT
CONTROL

14
HANDLEBAR

15
FRONT
SUSPENSION

16
CHASSIS/
FRAME
& SHOCKS

17
FENDER
& STRUTS

18
GAS TANK &
INSTRUMENT

19
OIL TANK, FILTER
& LINE

20
FASTENERS

21
MIRROR

22
WINDSHIELD

23
OIL, CHEMICALS
& TOOLS

24
TECHTIPS &
CROSS REF
> ZPN

25
CROSS REF
ZPN > PAGE

26
ALPHABETICAL
INDEX



LE PERA'S VILLAIN SOLO SEAT FOR SPORTSTER

Take a good long look at the picture of Le Pera's Villain Solo. It is an outrageous Solo seat with the cutting edge design of the original Villain seat. If you dig it, believe us when we say, it's going to get attention! The seat comes standard in black with black stitch and is 9.5" (24cm) wide.

743485 Le Pera Villain solo seat for 2004 thru 2006 and 2010 to present XL Sportster



LE PERA'S "SANORA STYLE" SOLO SEAT FOR SPORTSTER

A solo seat with a skirt, chrome studs, and two conchos gives your Sportster that special "Sanora" look and offers great riding comfort.

232802 Fits all 1982-2003 Sportsters

742366 Fits 2004 thru 2006 & 2010 to present XL Standard

742367 Fits 2004 thru 2006 & 2010 to present XL Custom



LE PERA OUTCAST WITH BACKREST FOR SPORTSTER

Taking style and comfort to an all time high! This seat will seriously transform the look of your bike. The driver backrest can be removed and installed quick and easy without any tools. All necessary hardware is built into the seat. Full Adjustability, up & down and forward & back.

Fits 2004 thru 2006 and 2010 to present XL Sportster models

743471 Models with 3.3 gallon (12.5 Liter) tank

743472 Models with 4.5 gallon (17 Liter) tank



LE PERA MAVERICK WITH BACKREST FOR SPORTSTER

The LePera Maverick with removable backrest is a beautifully shaped touring seat that will give you and your bike an unbelievable combination of both comfort and style. The driver backrest can be removed and installed quick and easy without any tools. All necessary hardware is built into the seat. Full Adjustability, up & down and forward & back.

743473 Fits 2004 thru 2006 and 2010 to present XL Sportster models with 3.3 gallon tank

743474 Fits 2004 thru 2006 and 2010 to present XL Sportster models with 4.5 gallon tank



LE PERA AVIATOR SOLO SEAT FOR SPORTSTER

When you are looking for a comfortable solo for your Sportster but do not want a design that overpowers your bike, the Aviator, with its tapered low profile and heavily contoured bucket, is at your beck and call. No pillion is available. Rider seating area is 12 1/2" (32cm) wide.

742936 Fits XL Sportster Standard models 2004-2006 and 2010 to present

742937 Fits XL Sportster Custom models 2004-2006 and 2010 to present



LE PERA'S SMOOTH SILHOUETTE FOR 1962 THRU 1984 FX & FL

The Silhouette transforms the looks, and adds a sleek flow to your bike.

232881 Silhouette Smooth, fits 1962 thru 1984 FX and FL models



LE PERA'S SANORA FOR 1962 THRU 1984 FX & FL

One of Le Pera's most popular, long running styles. Classic, nostalgic details. Perfectly contoured marathon foam. Sanora seats give the rider a 13" wide seating area. Sanora Pillion bolts directly to the Sanora seat, and is 7 1/2" wide.



232801 Sanora Smooth with Skirt, fits 1962 thru 1984 FX and FL models



232811 Matching Pillion



232808 Sanora Regal Plush with Skirt, fits 1962 thru 1984 FX and FL models

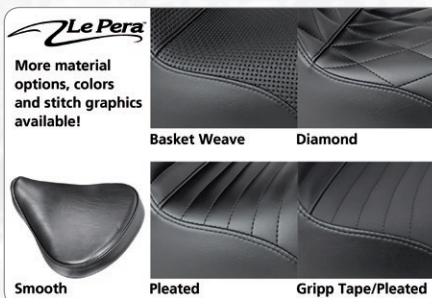


232804 Matching Pillion



LE PERA'S BARE BONES FOR 1962 THRU 1984 FX & FL

Aggressive Hot Rod looks, with an edgy, low profile. The perfect seat if you wish you could be riding on the frame.
239103 Bare Bones Solo, fits 1962 thru 1984 FX and FL models



LE PERA SPROCKET SEAT FOR TOURING

Sinfully Bobbed & Chopped design solo seat. Bobbing back to one of the most popular 1970's designs of Le Pera it creates more back support for highway driving. Features a powder coated steel base.

Fits 2008 to present Touring models

743858 Smooth

743859 Diamond stitching

743860 Pleated stitching



755471



755472

Fits all 2008 to present Touring models

742362 Maverick seat, black

755470 Maverick seat, black with white Hot Rod inlay

755471 Maverick seat, black with perforated inlay

755472 Maverick seat, black with "Carbon Fiber" look Hot Rod inlay

Fits 1994-1996 FLHR Road King

741438 Maverick seat, black

Fits 1997-2007 FLHR, FLHRC & FLHRS Road King

741439 Maverick seat, black



LE PERA'S KING COBRA FOR 1962 THRU 1984 FX & FL

Le Pera's King Cobra features the most fluid shape of all their FX & FL seats. Perfectly mimics the lines of the bike. A true "round-town" cruiser seat.

239111 King Cobra, fits 1962 thru 1984 FX and FL models



LE PERA MAVERICK FOR FLT, FLHT, FLHS & ROAD KING

The Maverick offers pure Touring luxury with 15" (38cm) of rider comfort and 14" (35, 5cm) for the passenger. Seat is shown on a Dresser, Road King models do not have the extended nose.

Fits 1991-1996 FLH, FLHT and FLHS models

741436 Maverick seat, black

Fits 1997-2007 FLH, FLHT and FLHS models

741437 Maverick seat, black



LE PERA RT66 FOR TOURING

The RT66 is the widest seat to ever wear the Le Pera name. It has the most passenger comfort of any of their seats and the removable backrest gives the extra support you are looking for. This seat offers pure touring luxury with 17" (43cm) of rider comfort and an amazing 16" (41cm) for the passenger.

743486 Fits 2008 to present Touring models



LE PERA'S SILHOUETTE SOLO FOR FLT, FLHT, FLHS & ROAD KING

The Silhouette will single-handedly transform the entire look of your Dresser or Road King, adding a sleek flow to your bike. Seat is shown on a Dresser, Road King models do not have the extended nose.

741432 Fits FLT, FLHT, and FLHS models 1991 thru 1996

741433 Fits FLT, FLHT, and FLHS models 1997 thru 2007

742360 Fits FLH, FLHT, FLHS and Road King models 2008 to present

741434 Fits Road King 1994 thru 1996

741435 Fits Road King 1997 thru 2001

741579 Fits Road King 2002 thru 2007



755470

01
HELMETS,
LUGGAGE,
AUDIO & MORE

02
SEAT

03
EXHAUST

04
ELECTRIC
& LIGHT

05
ENGINE
ELECTRICS

06
INTAKE

07
ENGINE

08
PRIMARY

09
TRANSMISSION

10
FINAL DRIVE

11
WHEELS &
TIRE

12
BRAKE

13
FOOT
CONTROL

14
HANDLEBAR

15
FRONT
SUSPENSION

16
CHASSIS/
FRAME
& SHOCKS

17
FENDER
& STRUTS

18
GAS TANK &
INSTRUMENT

19
OIL TANK, FILTER
& LINE

20
FASTENERS

21
MIRROR

22
WINDSHIELD

23
OIL, CHEMICALS
& TOOLS

24
TECHTIPS &
CROSS REF
> ZPN

25
CROSS REF
ZPN > PAGE

26
ALPHABETICAL
INDEX

01
02
03
04
05
06
07
08
09
10
11
12
13
14
15
16
17
18
19
20
21
22
23
24
25
26



NEW

755468



755467

755467 Maverick Tall Long Legs with stitching



755490

755490 Outcast, black perforated vinyl inlay
755491 Outcast, black with "Carbon Fiber" look inlay



LE PERA MAVERICK LONG LEGS FOR TOURING

Similar to the normal Maverick seat but with 2" (51mm) extra seat room front-to-back. The Daddy Long Legs is especially designed for taller riders that need just that little extra leg room. The Tall Long Legs has an additional 2" padding, making an overall seat height of 4" (102mm). Maverick seats have 14.5" (37cm) wide rider and 13" (33cm) wide passenger seat area.



755463

Fits 2008 to present Touring models

755463 Maverick Daddy Long Legs with white vinyl inlay



755464

755464 Maverick Daddy Long Legs with perforated black vinyl inlay



755465

755465 Maverick Daddy Long Legs with "Carbon Fiber" look inlay



755466

755466 Maverick Tall Long Legs smooth



755469

755469 Maverick Tall Long Legs smooth with driver backrest

755468 Maverick Tall Long Legs with stitching and driver backrest



LE PERA'S OUTCAST FOR TOURING

The Outcast offers an incredible amount of comfort for the driver. The removable backrest offers the extra support you are looking for, yet take out the backrest and you have a killer custom look to show off your bike. The Outcast GT combines a supreme rider comfort with a sleek, round town passenger comfort and the Daddy Long Legs provides more leg room for long riders while it keeps the same great style as the original.

NEW



Fits all Touring models from 2008 to present

743488 Outcast, smooth black



743487 Outcast, black with red pleated inlay



755489

755489 Outcast, black with white vinyl inlay



743489 Outcast Daddy Long Legs, black

755486 Outcast Daddy Long Legs, black with white vinyl inlay

755487 Outcast Daddy Long Legs, black with perforated vinyl inlay



755488

755488 Outcast Daddy Long Legs, black with "Carbon Fiber" look inlay



LE PERA'S VILLAIN SEAT FOR TOURING MODELS

Le Pera has been known to take a few design risks over the years and as you can see, they did it again with the crazy new Villain. What you see is one of those polarizing designs that, let's face it, you either love or hate. Regardless of your opinion, hopefully all will at least appreciate it for its total originality. Rather than bore you with more words, take a good long look at the picture. If you dig it, believe us when we say, it's going to get attention! Villain seats come standard in black with black stitch, rider area is 10 1/2" (27cm) wide, passenger area is 7 1/4" (18.5cm) wide.

742928 Fits 1997 thru 2001 FLHR Road King

742929 Fits 2002 thru 2007 FLHR Road King

742930 Fits all 1997 thru 2001 Touring models, except Road King & StreetGlide

742931 Fits all 2002 thru 2007 Touring models, except Road King & StreetGlide

742376 Fits all 2008 to present Touring models including Road King, Street Glide and Dressers



LE PERA OUTCAST 2-UP FOR TOURING

The Outcast offers an incredible amount of comfort for the driver. The removable backrest offers the extra support you are looking for, yet take out the backrest and you have a killer custom look to show off your bike. The 2-up seat has an extra wide, 11" (29.7cm) rear seat area for long trips with passengers and the Daddy Long Legs provides more leg room for long riders while keeping the same great style as the original.

Outcast 2-up, fits all Touring models from 2008 to present

755478 2-up smooth black

755485 2-up smooth with backrest

755479 2-up black with white vinyl inlay



755480 2-up black with white vinyl inlay and backrest

755481 2-up black with perforated vinyl inlay



755482 2-up black with perforated vinyl inlay and backrest



755483 2-up black with "Carbon Fiber" look vinyl inlay



755484 2-up black with "Carbon Fiber" look vinyl inlay and backrest



Outcast 2-up Daddy Long Legs, fits all Touring models from 2008 to present

755474 2-up Daddy Long Legs, smooth black

755475 2-up Daddy Long Legs, black with white vinyl inlay



755476 2-up Daddy Long Legs, black with perforated vinyl inlay



755477 2-up Daddy Long Legs, black with "Carbon Fiber" look vinyl inlay



LE PERA'S VILLAIN SOLO SEAT FOR TOURING

Le Pera's Villain solo seat has all the same features as the full length version and comes in black vinyl with black stitch too. The Villain Solo offers a 10" (25cm) wide rider seating area.

Fits all 2008 to present FLH and FLT series Touring models

742932 Le Pera Villain Solo seat



LE PERA STREAKER SEAT FOR TOURING

Classic styled solo seat with a powder coated steel base.

Fits 2008 to present Touring models

743870 Smooth

743871 Diamond stitching

743872 Pleated stitching



LE PERA'S SUPER VILLAIN SEAT FOR 2008 TO PRESENT TOURING MODELS

Le Pera's Super Villain has the same polarizing design as the Villain, but gives more comfort for the long haul. The seat comes standard in black with black stitching and has a 14 1/2" (39cm) rider area and 11" (28cm) passenger area. Fits all 2008 to present Touring models including Road King, Street Glide and Dressers.

742927 Le Pera Villain seat for 2008 to present Touring models



LE PERA'S NOMAD II FOR TOURING MODELS

Le Pera's Nomad II is another completely new, original and unique design. The side "slashes" are obviously the design stand out here. These "slashes" play off the lines of the tops and sides of your bikes hard bags, creating a bad ass, low sleek custom look for you and your passenger. By no means is the Nomad II a full on cross country touring seat but rest assured, most will find it surprisingly comfortable for its outrageous look! Driver seating area 12 1/2" (32cm) wide, passenger seating area is 7 1/4" (18.5cm) wide.

742946 Fits all 2008 to present FLH and FLT series Touring models

01
HELMETS,
LUGGAGE,
AUDIO & MORE

02
SEAT

03
EXHAUST

04
ELECTRIC
& LIGHT

05
ENGINE
ELECTRICS

06
INTAKE

07
ENGINE

08
PRIMARY

09
TRANSMISSION

10
FINAL DRIVE

11
WHEELS &
TIRE

12
BRAKE

13
FOOT
CONTROL

14
HANDLEBAR

15
FRONT
SUSPENSION

16
CHASSIS/
FRAME
& SHOCKS

17
FENDER
& STRUTS

18
GAS TANK &
INSTRUMENT

19
OIL TANK, FILTER
& LINE

20
FASTENERS

21
MIRROR

22
WINDSHIELD

23
OIL, CHEMICALS
& TOOLS

24
TECHTIPS &
CROSS REF
> ZPN

25
CROSS REF
ZPN > PAGE

26
ALPHABETICAL
INDEX

01
02
03
04
05
06
07
08
09
10
11
12
13
14
15
16
17
18
19
20
21
22
23
24
25
26



743854



743873



LE PERA LIL' NUGGET

For those who appreciate that Ol' Skool Bobber look and who are not afraid to show off the guts of their bikes, Le Pera created the Lil' Nugget. Indeed, the Lil' Nugget exposes wires, cables, and tank brackets to everyone's eyes. As Le Pera says "Back in the day, there was no other way". Rider seating area is 10" (25cm) wide. Comes in plain black vinyl.

742926 Fits 2008 to present FLH and FLT series Touring models



LE PERA'S STUBS CAFÉ SEAT FOR TOURING

Café Racer style has never been more popular. Le Pera's bitching little Stubs Café seat is everything a seat like this should be and absolutely nothing more. This seat is wide with Old Skool pleated stitching and a deep angled back support. In short it is just plain killer.

743491 Fits 2009 to present Electra Glide, Road King, Road Glide, Street Glide models



LE PERA DAYTONA SPORT FOR DYNA

Get on the road with the Daytona Sport seat. Sharp sport lines, low profile with plenty of lower back support.

741421 Fits Dyna Glide 1991-1995

741423 Fits Dyna Wide Glide 1993 thru 1995

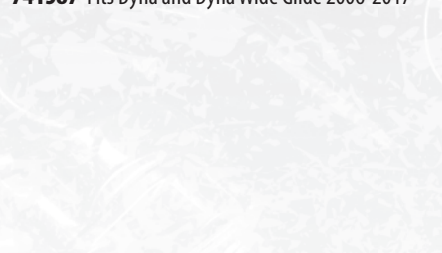
741422 Fits Dyna Glide 1996-2003

741424 Fits Dyna Wide Glide 1996 thru 2003

741474 Fits Dyna Glide 2004-2005

741475 Fits Dyna Wide Glide 2004 thru 2005

741587 Fits Dyna and Dyna Wide Glide 2006-2017



LE PERA KING COBRA FOR 1982 THRU 1994 FXR

The King Cobra features fender hugging curves from nose to tail. The sleekest Big City cruiser seat Le Pera makes.

239113 King Cobra, fits FXR 1982 thru 1994



LE PERA KICKFLIP SOLO SEAT FOR FXR

Full length solo seat with maximized back support and ample seating area. Fits all 1982 thru 1994 FXR models like stock with two front bolts on fender and rear mounting bracket.

743854 With Basket Weave stitching

743855 With Diamond stitching

743856 With Pleated stitching

743857 Gripp Tape material with Pleated stitching



LE PERA KICKFLIP SOLO SEAT FOR TOURING

Full length solo seat with maximized back support and ample seating area. Fits all 2008 to present Touring models. Features Le Pera's Marathon Foam for maximum stability and comfort.

743873 With Basket Weave stitching

743874 With Diamond stitching

743875 With Pleated stitching

743876 Gripp Tape material with Pleated stitching



LE PERA'S BARE BONES FOR 1982 THRU 1994 FXR

The Bare Bones is the thinnest production seat in existence. A "must have" to give your Dyna that extreme, slammed look.

239100 Bare Bones Solo, fits Dyna Glide 1991 thru 1995

239101 Bare Bones Solo, fits Dyna Wide Glide 1993 thru 1995

741425 Fits Dyna Glide 1996-2003

239102 Fits Dyna Wide Glide 1996 thru 2003

741476 Fits Dyna Glide 2004-2005

741477 Fits Dyna Wide Glide 2004 thru 2005

741588 Fits Dyna and Dyna Wide Glide 2006 thru 2017



LE PERA'S BARE BONES SOLO FOR DYNA

The lowest, most narrow production seat in existence. A "must have" to give your Dyna that extreme, slammed look.

239100 Bare Bones Solo, fits Dyna Glide 1991 thru 1995

239101 Bare Bones Solo, fits Dyna Wide Glide 1993 thru 1995

741425 Fits Dyna Glide 1996-2003

239102 Fits Dyna Wide Glide 1996 thru 2003

741476 Fits Dyna Glide 2004-2005

741477 Fits Dyna Wide Glide 2004 thru 2005

741588 Fits Dyna and Dyna Wide Glide 2006 thru 2017



LE PERA'S KING COBRA FOR 1982 THRU 1994 FXR

The King Cobra features fender hugging curves from nose to tail. The sleekest Big City cruiser seat Le Pera makes.

239113 King Cobra, fits FXR 1982 thru 1994



LE PERA'S KING COBRA FOR 1982 THRU 1994 FXR

The King Cobra features fender hugging curves from nose to tail. The sleekest Big City cruiser seat Le Pera makes.

239113 King Cobra, fits FXR 1982 thru 1994



LE PERA'S KING COBRA FOR 1982 THRU 1994 FXR

The King Cobra features fender hugging curves from nose to tail. The sleekest Big City cruiser seat Le Pera makes.

239113 King Cobra, fits FXR 1982 thru 1994



LE PERA'S KING COBRA FOR 1982 THRU 1994 FXR

The King Cobra features fender hugging curves from nose to tail. The sleekest Big City cruiser seat Le Pera makes.

239113 King Cobra, fits FXR 1982 thru 1994



LE PERA'S KING COBRA FOR 1982 THRU 1994 FXR

The King Cobra features fender hugging curves from nose to tail. The sleekest Big City cruiser seat Le Pera makes.

239113 King Cobra, fits FXR 1982 thru 1994



LE PERA'S KING COBRA FOR 1982 THRU 1994 FXR

The King Cobra features fender hugging curves from nose to tail. The sleekest Big City cruiser seat Le Pera makes.

239113 King Cobra, fits FXR 1982 thru 1994



LE PERA'S KING COBRA FOR 1982 THRU 1994 FXR

The King Cobra features fender hugging curves from nose to tail. The sleekest Big City cruiser seat Le Pera makes.

239113 King Cobra, fits FXR 1982 thru 1994



LE PERA'S KING COBRA FOR 1982 THRU 1994 FXR

The King Cobra features fender hugging curves from nose to tail. The sleekest Big City cruiser seat Le Pera makes.

239113 King Cobra, fits FXR 1982 thru 1994



LE PERA'S KING COBRA FOR 1982 THRU 1994 FXR

The King Cobra features fender hugging curves from nose to tail. The sleekest Big City cruiser seat Le Pera makes.

239113 King Cobra, fits FXR 1982 thru 1994



LE PERA'S KING COBRA FOR 1982 THRU 1994 FXR

The King Cobra features fender hugging curves from nose to tail. The sleekest Big City cruiser seat Le Pera makes.

239113 King Cobra, fits FXR 1982 thru 1994



LE PERA'S KING COBRA FOR 1982 THRU 1994 FXR

The King Cobra features fender hugging curves from nose to tail. The sleekest Big City cruiser seat Le Pera makes.

239113 King Cobra, fits FXR 1982 thru 1994



LE PERA'S KING COBRA FOR 1982 THRU 1994 FXR

The King Cobra features fender hugging curves from nose to tail. The sleekest Big City cruiser seat Le Pera makes.

239113 King Cobra, fits FXR 1982 thru 1994



LE PERA'S KING COBRA FOR 1982 THRU 1994 FXR

The King Cobra features fender hugging curves from nose to tail. The sleekest Big City cruiser seat Le Pera makes.

239113 King Cobra, fits FXR 1982 thru 1994



LE PERA'S KING COBRA FOR 1982 THRU 1994 FXR

The King Cobra features fender hugging curves from nose to tail. The sleekest Big City cruiser seat Le Pera makes.

239113 King Cobra, fits FXR 1982 thru 1994



LE PERA'S KING COBRA FOR 1982 THRU 1994 FXR

The King Cobra features fender hugging curves from nose to tail. The sleekest Big City cruiser seat Le Pera makes.

239113 King Cobra, fits FXR 1982 thru 1994



LE PERA'S KING COBRA FOR 1982 THRU 1994 FXR

The King Cobra features fender hugging curves from nose to tail. The sleekest Big City cruiser seat Le Pera makes.

239113 King Cobra, fits FXR 1982 thru 1994



LE PERA'S KING COBRA FOR 1982 THRU 1994 FXR

The King Cobra features fender hugging curves from nose to tail. The sleekest Big City cruiser seat Le Pera makes.

239113 King Cobra, fits FXR 1982 thru 1994



LE PERA'S KING COBRA FOR 1982 THRU 1994 FXR

The King Cobra features fender hugging curves from nose to tail. The sleekest Big City cruiser seat Le Pera makes.

239113 King Cobra, fits FXR 1982 thru 1994



LE PERA'S KING COBRA FOR 1982 THRU 1994 FXR

The King Cobra features fender hugging curves from nose to tail. The sleekest Big City cruiser seat Le Pera makes.

239113 King Cobra, fits FXR 1982 thru 1994



LE PERA'S KING COBRA FOR 1982 THRU 1994 FXR

The King Cobra features fender hugging curves from nose to tail. The sleekest Big City cruiser seat Le Pera makes.

239113 King Cobra, fits FXR 1982 thru 1994



LE PERA'S KING COBRA FOR 1982 THRU 1994 FXR

The King Cobra features fender hugging curves from nose to tail. The sleekest Big City cruiser seat Le Pera makes.

239113 King Cobra, fits FXR 1982 thru 1994



LE PERA'S KING COBRA FOR 1982 THRU 1994 FXR

The King Cobra features fender hugging curves from nose to tail. The sleekest Big City cruiser seat Le Pera makes.

239113 King Cobra, fits FXR 1982 thru 1994



LE PERA'S KING COBRA FOR 1982 THRU 1994 FXR

The King Cobra features fender hugging curves from nose to tail. The sleekest Big City cruiser seat Le Pera makes.

239113 King Cobra, fits FXR 1982 thru 1994



LE PERA'S KING COBRA FOR 1982 THRU 1994 FXR

The King Cobra features fender hugging curves from nose to tail. The sleekest Big City cruiser seat Le Pera makes.

239113 King Cobra, fits FXR 1982 thru 1994



LE PERA'S KING COBRA FOR 1982 THRU 1994 FXR

The King Cobra features fender hugging curves from nose to tail. The sleekest Big City cruiser seat Le Pera makes.

239113 King Cobra, fits FXR 1982 thru 1994



LE PERA'S KING COBRA FOR 1982 THRU 1994 FXR

The King Cobra features fender hugging curves from nose to tail. The sleekest Big City cruiser seat Le Pera makes.

239113 King Cobra, fits FXR 1982 thru 1994



LE PERA'S KING COBRA FOR 1982 THRU 1994 FXR

The King Cobra features fender hugging curves from nose to tail. The sleekest Big City cruiser seat Le Pera makes.

239113 King Cobra, fits FXR 1982 thru 1994



LE PERA'S KING COBRA FOR 1982 THRU 1994 FXR

The King Cobra features fender hugging curves from nose to tail. The sleekest Big City cruiser seat Le Pera makes.

239113 King Cobra, fits FXR 1982 thru 1994



LE PERA'S KING COBRA FOR 1982 THRU 1994 FXR

The King Cobra features fender hugging curves from nose to tail. The sleekest Big City cruiser seat Le Pera makes.

239113 King Cobra, fits FXR 1982 thru 1994



LE PERA'S KING COBRA FOR 1982 THRU 1994 FXR

The King Cobra features fender hugging curves from nose to tail. The sleekest Big City cruiser seat Le Pera makes.

239113 King Cobra, fits FXR 1982 thru 19



LE PERA SPROCKET SEAT FOR DYNA

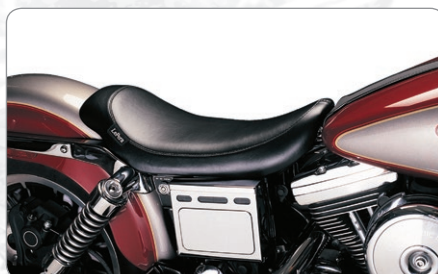
Sinfully Bobbed & Chopped design solo seat. Bobbing back to one of the most popular 1970's designs of Le Pera it creates more back support for highway driving. Features a powder coated steel base.

Fits 2006 thru 2017 Dyna models

743864 Smooth

743865 Diamond stitching

743866 Pleated stitching



LE PERA'S SILHOUETTE SOLO FOR DYNA

Sometimes you have to go Solo. Other times you have to go Pillion. The Silhouette Solo is the cleanest Solo seat you can find for your Dyna. Simplistic design allows it to fit with any paint scheme-custom or stock. The Silhouette Solo offers enough comfort for around town cruising. The optional Pillion pad is sold separately, and bolts directly to the Solo seat.

Silhouette Solo seats

237247 Fits Dyna Glide 1991-1995

237248 Fits Dyna Wide Glide 1993 thru 1995

741415 Fits Dyna Glide 1996-2003

741416 Fits Dyna Wide Glide 1996 thru 2003

741470 Fits Dyna Glide 2004-2005

741471 Fits Dyna Wide Glide 2004 thru 2005

741585 Fits Dyna and Dyna Wide Glide 2006 thru 2017



Silhouette Pillion pads

741417 Fits Dyna Glide 1991-1995

741419 Fits Dyna Wide Glide 1993 thru 1995

741418 Fits Dyna Glide 1996-2003

741420 Fits Dyna Wide Glide 1996 thru 2003

741472 Fits Dyna Glide 2004-2005

741473 Fits Dyna Wide Glide 2004 thru 2005

741586 Fits Dyna and Dyna Wide Glide 2006-2017



LE PERA'S VILLAIN SOLO SEAT FOR DYNA

Le Pera's Villain seat has brought seat designing to another level. The outrageous Villain seat comes standard in black vinyl with black stitch and offers a 11" (27.5cm) wide rider seating area. There is truly nothing like the Villain on the road.

Fits 2006 thru 2017 Dyna & Dyna Wide Glide models

742934 Le Pera Villain Solo seat



LE PERA'S STUBS SPOILER SEAT FOR DYNA

The Stubs spoiler takes the killer café style to new heights. Think of it as a café seat gone rock 'n roll. The bitchin' kicked up tail section is highlighted by speed stripes in a tight slammed package that shows off, not hides just how perfect the stance of your bike is. This seat needs to be seen in the flesh to fully appreciate just how killer it really is. All black and available to special order with speed stripes and pleats in a bunch of colors.

743480 Fits Dyna and Dyna Wide Glide 2006 thru 2017



LE PERA'S LIL' NUGGET FOR DYNA

For those who appreciate that Ol' Skool Bobber look and who are not afraid to show off the guts of their bikes, Le Pera created the Lil' Nugget. Give your Dyna that extreme, slammed look with the lowest, most narrow production seat in existence. Just 9" (24 cm) wide.

743484 Fits Dyna and Dyna Wide Glide 2006 thru 2017



LE PERA'S STUBS CAFÉ SEAT FOR DYNA

Café Racer style has never been more popular. Le Pera's bitching little Stubs Café seat is everything a seat like this should be and absolutely nothing more. This seat is 10.5" wide with Old Skool accent piping and a deep angled back support. In short it is just plain killer.



Fits Dyna and Dyna Wide Glide 2006 thru 2017

743481 Smooth



743482 Diamond



743483 Pleated



LE PERA'S KING COBRA FOR DYNA

The King Cobra creates the smoothest line from tank to fender of any seat available.

239108 King Cobra, fits Dyna Glide 1991 thru 1995

239109 King Cobra, fits Dyna Wide Glide 1993 thru 1995

239110 Fits Dyna Glide 1996-2003

741426 Fits Dyna Wide Glide 1996 thru 2003

741478 Fits Dyna Glide 2004-2005

741589 Fits Dyna and Dyna Wide Glide 2006 thru 2017

01
HELMETS,
LUGGAGE,
AUDIO & MORE

02
SEAT

03
EXHAUST

04
ELECTRIC
& LIGHT

05
ENGINE
ELECTRICS

06
INTAKE

07
ENGINE

08
PRIMARY

09
TRANSMISSION

10
FINAL DRIVE

11
WHEELS &
TIRE

12
BRAKE

13
FOOT
CONTROL

14
HANDLEBAR

15
FRONT
SUSPENSION

16
CHASSIS/
FRAME
& SHOCKS

17
FENDER
& STRUTS

18
GAS TANK &
INSTRUMENT

19
OIL TANK, FILTER
& LINE

20
FASTENERS

21
MIRROR

22
WINDSHIELD

23
OIL, CHEMICALS
& TOOLS

24
TECHTIPS &
CROSS REF
> ZPN

25
CROSS REF
ZPN > PAGE

26
ALPHABETICAL
INDEX



LE PERA'S MAVERICK FOR DYNA

The Maverick makes a grand tourer out of your Dyna and provides maximum lower back support.

741427 Maverick, fits Dyna Glide 1991 thru 1995

741428 Fits Dyna Glide 1996-2003

741480 Fits Dyna Glide 2004-2005

741481 Fits Dyna Wide Glide 2004 thru 2005

741590 Fits Dyna and Dyna Wide Glide 2006 thru 2017



LE PERA'S VILLAIN SEAT FOR DYNA

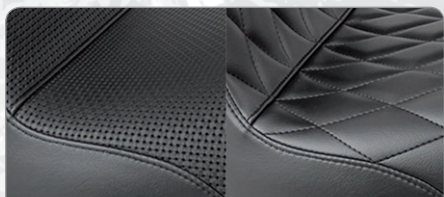
Le Pera's Villain is a polarizing design that will make heads turn. It is a truly unique seat that will completely change the look of your bike. Take a good look at the picture. If you dig it, believe us when we say, it's going to get attention! The seat comes standard in black with black stitching.

742933 Fits all 2006 thru 2017 Dyna including Street Bob, Super Glide, Wide Glide and Fat Bob



NEW

743850



743850 Basket Weave

743852 Pleated

Le Pera

743851 Diamond

743853 Gripp Tape/Pleated



LE PERA KICKFLIP SOLO SEAT FOR DYNA

Full length solo seat with maximized back support and 11" (27, 9cm) wide driver seating area. Fits like stock with two front bolts on fender and rear mounting bracket.



755500

Fits all 2006 thru 2017 Dyna models

743850 With Basket Weave stitching

743851 With White Double Diamond stitching

755500 With Flat Track stitching



755496

755496 With Brown Distressed Vinyl and Diamond stitching



755498

755498 Gripp Tape material with Diamond stitching

755498 Gripp Tape material with Diamond stitching



755499

755499 With Double Diamond stitching



755503

755503 With White Double Diamond stitching



743852

743852 With Pleated stitching



743853

743853 Gripp Tape material with Pleated stitching



743853

Fits 2004-2005 FXD Dyna models (except Wide Glide)

755495 With Basket Weave stitching



755497

755497 With Diamond stitching



755501

755501 With Pleated stitching



755502

755502 Gripp Tape material with Pleated stitching

**LE PERA'S KING COBRA FOR SOFTAIL**

Le Pera's King Cobra features the most fluid shape of all their Softail seats. A true "round-town" cruiser that perfectly mimics the lines of the bike.

729107 Fits all 1984-1999 Softail

721708 Fits FLST, FLSTC, FLSTS, FLSTSC Softail 2000-2017 & FLSTF Fat Boy 2000-2006

741584 Fits FLSTF, FLSTFB, FLSTFBS, FLSTSB, FXST, FXSTB, FXSTC, FXSTS, FXSTSSE Softail 2006-2017

**LE PERA'S CHEROKEE SEAT FOR SOFTAIL**

The Bobbed and Chopped King & Queen style is back in town with Le Pera's Cherokee seat. The Cherokee comes standard with a smooth black top with black stitchings and offers a 11" (27.5cm) wide rider seating area.

Fits all 2006-2017 FXST Softails, 2007-2017 FLSTF Fat Boy and 2008-2011 FLSTSB Cross Bones. Passenger area is 7 3/4" wide.

742922 Le Pera Cherokee seat

Fits FLSL Slim & FXBB Street Bob 2018 to present. Passenger area is 6" wide

743888 Le Pera Cherokee seat, smooth

743886 Le Pera Cherokee seat, black diamond stitching

743887 Le Pera Cherokee seat, pleated

Fits FLDE Deluxe and FLHC & FLHCS Heritage Classic 2018 to present

755415 Le Pera Cherokee seat, diamond

755420 Le Pera Cherokee seat, pleated

755424 Le Pera Cherokee seat, smooth

Fits FLFB & FLFBS Fat Bob 2018 to present

755416 Le Pera Cherokee seat, diamond

755421 Le Pera Cherokee seat, pleated

755425 Le Pera Cherokee seat, smooth

Fits FXBR & FXBRS Breakout 2018 to present

755417 Le Pera Cherokee seat, diamond

755422 Le Pera Cherokee seat, pleated

755419 Le Pera Cherokee seat, smooth

Fits FXLR & FXLRS Low Rider and FLSB Sport Glide 2018 to present

755418 Le Pera Cherokee seat, diamond

755423 Le Pera Cherokee seat, pleated

755426 Le Pera Cherokee seat, smooth

**LE PERA SORRENTO SEAT FOR BREAKOUT**

The Sorrento is a fusion of Silhouette style and Maverick comfort. The entire seat has been shaved down for a flowing profile. Perfectly formed with a wide rider area and loads of passenger comfort.

743492 Fits 2013 thru 2017 FXSB, FXSBSE & FXSE Breakout



More material options, colors and stitch graphics available!



Basket Weave



Smooth

**LE PERA 2-UP DAYTONA SEAT FOR MILWAUKEE EIGHT SOFTAIL**

Race-bred bitching Café style seat for all day canyon carving comfort. Rider area is 11" (28cm) wide with 7" (17.8cm) of back support. Passenger seating area is 9" (22.9cm) wide.

Fits FLSL Slim & FXBB Street Bob 2018 to present

743885 Le Pera 2-up Daytona seat, smooth

743884 Le Pera 2-up Daytona seat, basket weave

Fits FLDE Deluxe and FLHC & FLHCS Heritage Classic 2018 to present

755431 Le Pera 2-up Daytona seat, smooth

755427 Le Pera 2-up Daytona seat, basket weave

Fits FLFB & FLFBS Fat Boy 2018 to present

755432 Le Pera 2-up Daytona seat, smooth

755428 Le Pera 2-up Daytona seat, basket weave

Fits FXBR & FXBRS Breakout 2018 to present

755433 Le Pera 2-up Daytona seat, smooth

755429 Le Pera 2-up Daytona seat, basket weave

Fits FXLR & FXLRS Low Rider and FLSB Sport Glide 2018 to present

755434 Le Pera 2-up Daytona seat, smooth

755430 Le Pera 2-up Daytona seat, basket weave



755492

NEW

755492 Basket Weave

755493 Double Diamond

755494 Pleated

**LE PERA TAILWHIP SEAT FOR DYNA**

Le Pera takes the Kick Flip style seats one step further with the TailWhip, whether it's more comfort for the passenger or just another platform to let your adventurous side explore, the whipped-up tail will give you what you are looking for. Drive seat area measures 10.75" (27.3cm) wide, with 6" (15.25cm) wide backrest, and 7" (17.75cm) wide passenger seat area.

Fits all 2006-2017 Dyna models

755492 TailWhip seat with Basket Weave stitching



755493

755493 TailWhip seat with Double Diamond stitching



755494

755494 TailWhip seat with Pleated stitching

01	HELMETS, LUGGAGE, AUDIO & MORE
02	SEAT
03	EXHAUST
04	ELECTRIC & LIGHT
05	ENGINE ELECTRICS
06	INTAKE
07	ENGINE
08	PRIMARY
09	TRANSMISSION
10	FINAL DRIVE
11	WHEELS & TIRE
12	BRAKE
13	FOOT CONTROL
14	HANDLEBAR
15	FRONT SUSPENSION
16	CHASSIS/FRAME & SHOCKS
17	FENDER & STRUTS
18	GAS TANK & INSTRUMENT
19	OIL TANK, FILTER & LINE
20	FASTENERS
21	MIRROR
22	WINDSHIELD
23	OIL, CHEMICALS & TOOLS
24	TECHTIPS & CROSS REF > ZPN
25	CROSS REF ZPN > PAGE
26	ALPHABETICAL INDEX



LE PERA'S SILHOUETTE FOR SOFTAIL

The Silhouette is the original trendsetter in form and function. All styling details are taken straight from the Softails tank, fender and struts. First choice for bike builders worldwide as the seat completely transforms your bikes profile.

232880 Fits Softail 1984 thru 1999

721706 Fits FLST Softail 2000 thru 2017 and FXST Softail 2000 thru 2005

741581 Fits FXST Softail 2006 thru 2017



743494 Fits FXSB, FXSBSE & FXSE Breakout 2013 thru 2017



LE PERA'S BARE BONES SOLO FOR SOFTAIL

Lower and more aggressive than the Silhouette Solo, the Bare Bones is the Solo seat that has broken every rule. Simplistic design allows it to slip into any stock or custom Softail.

Fits Softail 1984-1999

239105 Bare Bones solo

Fits FLST Softail 2000-2007 & FXST Softail

2000-2005, except Deuce

721703 Bare Bones solo



Fits 2000-2007 FXSTD Deuce

743878 Bare Bones solo

Fits FXST Softail 2006-2017, FLSTF FatBoy 2007-2017 and FLSTSB Cross Bones 2008-2011

741580 Bare Bones Solo

742943 Matching 7" (18cm) wide pillion seat for ZPN 239105, 721703 & 741580

Fits FLSTN Softail DeLuxe and FLSTC Heritage Softail Classic 2008-2017

742374 Bare Bones solo

742949 Matching 7" (18cm) wide pillion seat for ZPN 742374



Fits 2011-2013 FXS Blackline and 2011-2015 FLS Slim

742944 Bare Bones solo

Fits 2016-2017 FLS Slim

742952 Bare Bones solo

Fits 2011 thru 2013 FXS Blackline and 2011-2015 FLS Slim

743490 Up-front version, moves you over 2 3/8" (6cm) closer to your handlebars.

Fits 2016 thru 2017 FLS & FLSS Slim

742953 Up-front version, moves you over 2 3/8" (6cm) closer to your handlebars.

742945 Matching pillion seat for ZPN 743490 & 742953

Fits 2013 thru 2017 FXSB, FXSBSE & FXSE Breakout

743496 Bare Bones solo

Fits 2011-2013 FXS Blackline and 2011-2015 FLS Slim

743497 Bare Bones solo with White Diamond stitching



755400

Fits 2018 to present FLDE Deluxe and FLHC & FLHCS Heritage Classic

755406 Bare Bones solo

755400 Bare Bones solo with Diamond stitching

755411 Bare Bones solo with White Diamond stitching

Fits 2018 to present FLFB & FLFBS Fat Boy

755408 Bare Bones solo

755401 Bare Bones solo with Diamond stitching

755413 Bare Bones solo with White Diamond stitching



755402



755405

Fits 2018 to present FXBB Street Bob & FLSL Slim

755409 Bare Bones solo

755402 Bare Bones solo with Diamond stitching

755405 Bare Bones solo with White Diamond stitching

Fits 2018 to present FXBR & FXBRS Breakout

755410 Bare Bones solo

755403 Bare Bones solo with Diamond stitching

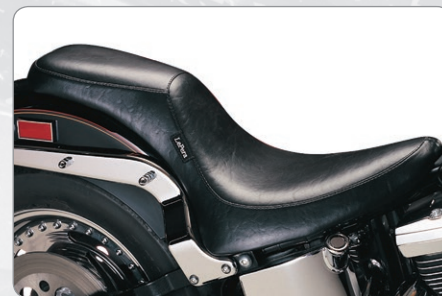
755414 Bare Bones solo with White Diamond stitching

Fits 2018 to present FXLR & FXLRS Low Rider and FLSSB Sport Glide

755407 Bare Bones solo

755404 Bare Bones solo with Diamond stitching

755412 Bare Bones solo with White Diamond stitching



LE PERA'S 2-UP SILHOUETTE FOR SOFTAIL

The 2-Up Silhouette is as sleek and stylish as the Silhouette is, but it features a subtle passenger area, perfect for cruising around town. Installation of seat ZPN 741412 on 2006 FLST, 2000-2006 FLSTC, FLSTF & FLSTSC and all 2000-2005 FX Softails requires the separate purchase of seat bracket ZPN 758351.

235300 Fits Softail 1984 thru 1999

741412 Fits FLST Heritage 2006, FLSTC Heritage Classic 2000-2017, FLSTF Fat Boy 2000-2006, FLSTN DeLuxe 2005-2017, FLSTS Springer 2000-2003, FLSTSC Springer 2005-2007, FXST Softail 2000-2005, FXSTB Night Train 2000-2005, FXSTS Springer 2000-2005

758351 Optional seat bracket for 2006 FLST, 2000-2006 FLSTC, FLSTF & FLSTSC and all 2000-2005 FX Softails



741583 Fits FLSTF & FLSTFB & FLSTFBS Fat Boy 2007-2017, FLSTSB Cross Bones 2008-2011, FLSTSC Heritage Springer 2007, FXST Standard 2006-2010, FXSTB Night Train 2006-2009, FXSTC Custom 2007-2010, FXSTS Springer 2006



743493 Fits 2013 thru 2017 FXSB, FXSBSE & FXSE Breakout



LE PERA'S VILLAIN SEAT FOR SOFTAIL

Le Pera's Villain seat has brought seat designing to another level. As Bob Le Pera Jr says; This is true cutting edge design and sets new benchmarks in the industry. The outrageous Villain seat comes standard in black with black stitch and offers a 10" (25cm) wide rider seating area and a 7" (17cm) side passenger seating area. Installation of seat ZPN 742924 on 2006 FLST, 2000-2006 FLSTC, FLSTF & FLSTSC and all 2000-2005 FX Softails requires the separate purchase of seat bracket ZPN 758351.

Fits all 1984 thru 1999 Softail models
742923 Villain Seat for Softail

Fits:
FLST Heritage 2006
FLSTC Heritage Classic 2000-2017
FLSTF Fat Boy 2000-2006
FLSTN DeLuxe 2005-2017
FLSTS & FLSTSC Springer 2000-2007
FXST Standard 2000-2005
FXSTB Night Train 2000-2005
FXSTS Springer 2000-2005
742924 Villain Seat for Softail

Fits:
FLSTF & FLSTFB & FLSTFBS Fat Boy 2007-2017
FLSTSB Cross Bones 2008-2011
FLSTSC Heritage Springer 2007
FXST Standard 2006-2010
FXSTB Night Train 2006-2009
FXSTC Custom 2007-2010
FXSTS Springer 2006
742920 Villain Seat for Softail

Fits 2013 thru 2017 FXSB, FXSBSE & FXSE Breakout
743495 Villain Seat for Softail



LE PERA'S SILHOUETTE SOLO FOR SOFTAIL

The Solo seat with no equal. Creates a stylized line from tank to fender with its perfectly contoured shape. The separately sold Pillion Pads bolt directly to Silhouette Solo seats only.

Fits all 1984 thru 1999 Softail models
232876 Silhouette Solo for Softail



Fits 2000-2007 FXSTD Deuce
743877 Silhouette Solo for Deuce

Fits:
FLST & FLSTC Heritage 2000-2007
FLSTF Fat Boy 2000-2006
FLSTN DeLuxe 2005-2007
FLSTS & FLSTSC Springer 2000-2007
FXST Softail 2000-2005
FXSTB Night Train 2000-2005
FXSTS Springer 2000-2005
721705 Silhouette Solo for Softail



Fits:
FLSTF, FLSTFB & FLSTFBS Fat Boy 2007-2017
FLSTSB Cross Bones 2008-2011
FLSTSC Heritage Springer 2007
FXST Standard 2006-2010
FXSTB Night Train 2006-2009
FXSTC Custom 2007-2010
FXSTS Springer 2006
741582 Silhouette Solo for Softail

Fits:
FLSTC Heritage Classic 2008-2017
FLSTN DeLuxe 2008-2017
742375 Silhouette Solo for Softail

Fits:
FXSB, FXSBSE & FXSE Breakout 2013-2017
743498 Silhouette Solo for Softail



Fits all 1984 thru 1999 Softail models

741413 Pillion seat for Le Pera Silhouette Solo seat



Fits:
FLST Heritage 2006
FLSTC Heritage Classic 2000-2007
FLSTF & FLSTFSE Fat Boy 2000-2006
FLSTN DeLuxe 2005-2007
FLSTS Springer 2000-2003
FLSTSC Springer Classic 2005-2007
FXST Standard 2000-2005
FXSTB Night Train 2000-2005
FXSTS Springer 2000-2005
741414 Pillion seat for Le Pera Silhouette Solo seat

Fits:
FXST Standard 2006-2017
FLSTF, FLSTFB, FLSTFBS & FLSTFSE FatBoy 2007-2017
FLSTSB Cross Bones 2008-2011
742935 Pillion seat for Le Pera Silhouette Solo seat



LE PERA "OLD SKOOL" METAL FLAKE SEATS

In the best tradition of what was so immense popular in the fifties and sixties are these Le Pera custom seats and matching pillion pads. They feature a metal base and universal mount. Finished in Red Metal Flake Vinyl with that so very old school style White Piping and Diamond Pleats.

741591 Old Skool seat
741592 Old Skool pillion

01	HELMETS, LUGGAGE, AUDIO & MORE
02	SEAT
03	EXHAUST
04	ELECTRIC & LIGHT
05	ENGINE ELECTRICS
06	INTAKE
07	ENGINE
08	PRIMARY
09	TRANSMISSION
10	FINAL DRIVE
11	WHEELS & TIRE
12	BRAKE
13	FOOT CONTROL
14	HANDLEBAR
15	FRONT SUSPENSION
16	CHASSIS/FRAME & SHOCKS
17	FENDER & STRUTS
18	GAS TANK & INSTRUMENT
19	OIL TANK, FILTER & LINE
20	FASTENERS
21	MIRROR
22	WINDSHIELD
23	OIL, CHEMICALS & TOOLS
24	TECHTIPS & CROSS REF > ZPN
25	CROSS REF ZPN > PAGE
26	ALPHABETICAL INDEX



LE PERA'S VILLAIN SOLO SEAT FOR SOFTAIL

Take a good long look at the picture of Le Pera's Villain Solo. It is an outrageous Solo seat with the cutting edge design of the original Villain seat. If you dig it, believe us when we say, it's going to get attention! The seat comes standard in black with black stitch and is 10" (25cm) wide.

Fits:

FLST & FLSTC Heritage 2000-2007
FLSTF & FLSTFSE Fat Boy 2000-2006
FLSTN DeLuxe 2005-2017
FLSTS & FLSTSC Heritage Springer 2000-2007
FXST Standard 2000-2005
FXSTB Night Train 2000-2005
FXSTS Springer 2000-2005
742925 Villain Solo seat for Softail

Fits:

FLSTF, FLSTFB & FLSTFBS Fat Boy 2007-2017
FLSTFSE CVO Fat Boy 2006
FLSTSB Cross Bones 2008-2011
FLSTSSE CVO Springer 2010-2012
FXST Standard 2006-2015
FXSTB Night Train 2006-2011
FXSTC Custom 2006-2010
FXSTS & FXSTSSE Springer 2006-2008
742921 Villain Solo seat for Softail



LE PERA MAVERICK SEAT FOR SOFTAIL

Own the road with this seat that features pure touring luxury. The deeply contoured driver seating area is 14" (35.6cm) wide with 7" (17.8cm) of back support and passenger seating area is 11 1/2" (29.2cm) wide.

Fits FLSL Slim & FXBB Street Bob 2018 to present

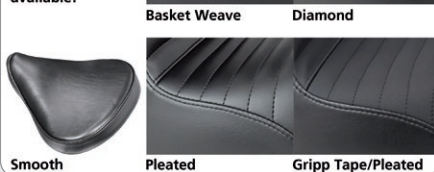
743889 Maverick seat with Maverick stitching
743890 Maverick seat, Daddy Long Legs with +2" seat room

Fits FLDE Deluxe and FLHC & FLHCS Heritage Classic 2018 to present

755460 Maverick seat with Maverick stitching
755461 Maverick seat, smooth
755462 Maverick seat, Daddy Long Legs with +2" seat room



More material options, colors and stitch graphics available!



LE PERA KICKFLIP SOLO FOR MILWAUKEE EIGHT SOFTAIL

A seat that every adventurous rider would be stoked to own. The maximized back support and ample seating area offer plenty of options for riding or showing off at a moment's notice. Driver seating area is 11" (28cm) wide.

Fits FXBB Street Bob and FLSL Slim 2018 to present

743880 Diamond stitch
743881 Diamond Gripp tape
743882 Pleated stitch
743883 Pleated Gripp tape
743879 Basket Weave stitch

Fits FLDE Deluxe and FLHC & FLHCS Heritage Classic 2018 to present

755440 Diamond stitch
755445 Diamond Gripp tape
755450 Pleated stitch
755455 Pleated Gripp tape
755435 Basket Weave stitch

Fits FLFB & FLFBS Fat Boy 2018 to present

755441 Diamond stitch
755446 Diamond Gripp tape
755451 Pleated stitch
755456 Pleated Gripp tape
755436 Basket Weave stitch

Fits FXBR & FXBRS Breakout 2018 to present

755442 Diamond stitch
755447 Diamond Gripp tape
755452 Pleated stitch
755457 Pleated Gripp tape
755437 Basket Weave stitch

Fits FXFB Fat Bob 2018 to present

755443 Diamond stitch
755448 Diamond Gripp tape
755453 Pleated stitch
755458 Pleated Gripp tape
755438 Basket Weave stitch

Fits FXLR & FXLRS Low Rider and FLSE Sport Glide 2018 to present

755444 Diamond stitch
755449 Diamond Gripp tape
755454 Pleated stitch
755459 Pleated Gripp tape
755439 Basket Weave stitch



743475



743476



743477



LE PERA STUBS CAFÉ SEAT FOR SOFTAIL SLIM

Café Racer style has never been more popular. Le Pera's bitching little Stubs Café seat is everything a seat like this should be and absolutely nothing more. This seat features a deep angled back support. In short it is just plain killer.

Fits 2016 thru 2017 FLS & FLSS Softail Slim

743475 Stubs Café with Diamond stitching
743476 Stubs Café with Pleated stitching
743477 Stubs Café plain

ECO LINE SOLO SEAT FOR SPORTSTERS

Zodiac offers you these ergonomically shaped solo seats, providing you with a comfortable ride for miles and miles. The base plate is made from Heavy Duty fiberglass. Upholstery is a Heavy Duty quality naugahyde. Available in plain black, plain black with studs and conchos, plain black with Spider Web stitching, or black with orange race stripe and orange piping. Fits 1986 thru 2003 Sportster models.



741377 Plain black



741381 Plain black with Spider Web stitching



ECO LINE SOLO SEAT FOR 2004 TO PRESENT SPORTSTER

Exactly the same quality as our other Eco Line seats and also for an affordable price. Fiberglass base plate and black naugahyde upholstery.

741383 Eco Line solo seat for 2004 thru 2006 and 2010 to present XL883C and XL1200C models



744832



744833



CAFE RACER STYLE SEAT FOR SPORTSTER

The Sportster based Café Racer has become a style in its own right, taking the classic look to new levels and doing it with a magic only a Harley can bring to the table. This tail completes the Café package on 1986 to present Sportsters. Available in partially covered with paintable black gel coat as well as a fully covered version that has the rear covered with the same vinyl as the seating area. Both seats feature a gel insert in the seating area for maximum comfort. Installation requires removal of fender, supporting struts and relocation of taillight and signals. Includes mounting hardware for OEM electronics.

1986-2003 Sportster

744832 With paintable rear section

744833 Fully covered version

2004-2006 Sportster

744990 With paintable rear section

744995 Fully covered version

2007-2009 XL Sportster

744992 With paintable rear section

744993 Fully covered version

2010 to present XL Sportster

744994 With paintable rear section

744995 Fully covered version



NEW

TOMMY & SON'S

TOMMY & SONS SEAT BASES FOR USE WITH ROCCA, CELTIC & MAGNUS SIDE COVERS

Fiberglass seat bases to build your custom seat when you use side covers or a gas tank cover kit from Tommy & Sons. Do not fit with stock side covers.

761158 Fits 2009 to present Touring with Rocca and Celtic tank cover and/or side covers

761159 Fits 2009 to present Touring with Magnus tank cover and/or side covers



ECO LINE SOLO SEAT XL883C & XL1200C

Ergonomically shaped and high quality seats for an affordable price. Seats feature a fiberglass base plate and heavy duty quality black naugahyde upholstery.

740922 Eco Line solo seat 2007-2009 XL883C & XL1200C



ECO LINE SOLO SEAT FOR 2004 TO PRESENT SPORTSTERS

All the same features as our other Eco Line seats, like a Heavy Duty fiberglass base plate and Heavy-Duty quality Naugahyde upholstery, but specifically made as a bolt-on seat for Sportsters.

Note: 2007 thru 2009 models have the ECM located under the seat.

740920 Fits all 2004-2006 Sportster and 2010 to present XL883R and XL1200C Sportster models

740921 Fits all 2007-2009 XL883 and XL1200 Sportster models



SAMWEL SOLO SEAT FOR MILITARY 45'S

Perfect reproduction of the solo seat found on 45CI Side valve WLA models. Made of the finest grade cowhide available in the genuine brown color. Has a steel base plate and comes complete with mounts.

745961 WLA Solo seat (OEM 3181-40M)



ECO LINE MINI SOLO SEATS

Small solo seats with great looks. They feature a steel base plate with four M8 mounting studs installed and a slim upholstery for that sleek low profile. Seats are 14" (36cm) long and 10" (25cm) wide and come in various colors, including Old Skool metal flake red.

743713 Plain black

743712 Plain brown

743714 Red metal flake

743707 Black with diamond stitching

743706 Brown with diamond stitching

743708 Red metal flake with black diamond stitching

743709 Brown with striped stitching

743711 Red metal flake with striped stitching

743700 Snake belly brown

743702 Snake belly red metal flake

743704 Black with centered diamond line stitching

743703 Brown with centered diamond line stitching

743705 Red metal flake with centered diamond stitching

01	HELMETS, LUGGAGE, AUDIO & MORE
02	SEAT
03	EXHAUST
04	ELECTRIC & LIGHT
05	ENGINE ELECTRICS
06	INTAKE
07	ENGINE
08	PRIMARY
09	TRANSMISSION
10	FINAL DRIVE
11	WHEELS & TIRE
12	BRAKE
13	FOOT CONTROL
14	HANDLEBAR
15	FRONT SUSPENSION
16	CHASSIS/FRAME & SHOCKS
17	FENDER & STRUTS
18	GAS TANK & INSTRUMENT
19	OIL TANK, FILTER & LINE
20	FASTENERS
21	MIRROR
22	WINDSHIELD
23	OIL, CHEMICALS & TOOLS
24	TECHTIPS & CROSS REF > ZPN
25	CROSS REF ZPN > PAGE
26	ALPHABETICAL INDEX



BOBBER CULT SOLO SEATS FOR SPORTSTER

Black powder coat steel base with a leather embossed cover over polyurethane foam.

Fits 2004 to present Sportster XL models

743810 Brown leather, spring mounted solo

743811 Brown leather fixed mount solo

743812 Black leather, spring mounted solo

743813 Black leather fixed mount solo

ECO LINE METAL FLAKE SPRUNG SOLO SEATS

All the same features as our other Eco Line Sprung Solo seats, but covered with Metal Flake vinyl for the true back-to-the-sixties-looks.

741613 Metal flake red vinyl

741618 Metal flake green vinyl

ECO LINE SPRUNG SOLO SEATS

Sprung mounted solo seats are a true all-time Custom favorite and our Eco Line solo's are very nicely priced, yet still high quality. Seats are 13" (33cm) long, 11 1/2" (29cm) wide and 1 1/2" (4cm) thick. Available with a vinyl or leather deck in various colors. Leather covered seats are also available with a true custom style embossing that feature random placed popular designs, such as dices, pin-ups, skulls, diamonds, Maltese crosses, roses and so on. All Eco Line sprung solos feature a black coated metal base with four M8 mounting studs. Springs and other mounting hardware must be ordered separately.

741610 Black vinyl

741612 Red vinyl

741619 Black leather, plain

741620 Brown leather, plain

741621 Black leather, embossed

741622 Brown leather, embossed



762643



762644



762645

ARROW SOLO SEAT

Arrow solo seats are a very clean design for your chopper project. Feature a steel base with four M8 mounting studs installed and are covered with minimalistic high density foam with a 3/8" (8mm) thickness. Seats are 13" (33cm) long and 9 1/2" (24cm) wide.

742838 Brass plated base with brown top

742839 Copper plated base with brown top

742841 Black base with black top



MOTORCYCLE PARTS, SADDLES & SADDLERAGS

1925 THRU 1931 STYLE MESINGER SOLO SEATS

Perfect reproduction of the OEM 52004-25 Mesinger #3 style leather solo pan seat with a spring steel frame. These seats are well known for over 9 decades for their unparalleled comfort. Seats fit 1936 thru 1940 EL, 1941 thru 1984 FL, 1929 thru 1952 WL, 1930 thru 1948 VL and 1937 thru 1972 G models. Genuine cowhide leather.

762643 Dark brown

762644 Black

762645 Tan (light) brown



KR STYLE SOLO SEATS

This thin, racing style solo seat is a custom version of the original KR seat. Features a modified, black painted steel base plate which can be mounted with custom made mounts or T-bar and seat post. The seat cover is handmade in Europe from genuine leather. Great for Bobbers!

762640 Brown leather KR solo seat

762641 Black leather KR solo seat

720094



720095



720096



762642



MOTORCYCLE PARTS SADDLES & SADDLEBAGS

OLD STYLE LEATHER SOLO SADDLES

These old style solo saddles are exact reproductions of the OEM saddles. Bottom plates are made of steel. Saddles are covered with the finest grade of cow hide available, well waterproofed and practically wear proof. Available in either brown or black finish. Black saddles are also available in 1954 "Deluxe" style. Saddles come complete with mounting kits. If installed on later models custom brackets must be made.

720094 Solo saddle brown w/o skirt (OEM 3181-36)

720095 Solo saddle black w/o skirt (OEM 3181-25 & 52004-25)

720096 Deluxe solo saddle black (OEM 3181-54 & 52004-54)

762642 Deluxe solo saddle black early-style (OEM 52006-47)



REMOVABLE SUCKER SEATS

For those who have the opinion that Classy Custom Bikes or Smooth Choppers have to look clean and should not have a pillion pad, but want to take someone for a ride, we offer these quick to install and quick to remove Sucker Seats. Sucker Seats stick to a smooth rear fender with suction cups. No tools or hardware needed, just wet the cups and your passenger seat installs in seconds without scratching your paint. Sucker Seats are available in small, medium, and large. The medium pad also comes in an Extra-comfort version with an ergonomically shaped form, the large pad comes in Standard or with a special Space-Age Ergonomic Shaped Memory Foam.

741240 [A] Small 6"x9"x1 3/4" (15x23x4.5cm)

741241 [B] Medium 7"x9 1/2"x2" (18x24x5cm)

741244 [C] Comfort Medium 7"x9 1/2"x2" (18x24x5cm)

741242 [D] Large 7 7/8"x9"x2" (20x23x5cm)

741243 [E] Large with Ergonomic Memory Foam, 7 7/8"x9"x2" (20x23x5cm)



REBUFFINI SATTELATE PASSENGER SEATS

Easy to install and easy to remove. Dedicated to those who do not want a permanently installed passenger seat. Short seats feature 4 suction cups and are 22 cm long, 15 cm wide and 4.5 cm thick. Long seats feature 6 suction cups and are 25 cm long, 16 cm wide and 4.5 cm thick.

746443 Short Sattelate seat, black



746444 Long Sattelate seat, black



EMBOSSED SUCKER SEATS

All the same advantages as our regular Sucker Seats, but in your choice of Skull or Maltese Cross embossing.

741375 Skull embossed 7"x9 1/2"x2" (18x24x5cm)



741376 Maltese Cross embossed 6"x9"x1 3/4" (15x23x4.5cm)

01	HELMETS, LUGGAGE, AUDIO & MORE
02	SEAT
03	EXHAUST
04	ELECTRIC & LIGHT
05	ENGINE ELECTRICS
06	INTAKE
07	ENGINE
08	PRIMARY
09	TRANSMISSION
10	FINAL DRIVE
11	WHEELS & TIRE
12	BRAKE
13	FOOT CONTROL
14	HANDLEBAR
15	FRONT SUSPENSION
16	CHASSIS/FRAME & SHOCKS
17	FENDER & STRUTS
18	GAS TANK & INSTRUMENT
19	OIL TANK, FILTER & LINE
20	FASTENERS
21	MIRROR
22	WINDSHIELD
23	OIL, CHEMICALS & TOOLS
24	TECHTIPS & CROSS REF > ZPN
25	CROSS REF ZPN > PAGE
26	ALPHABETICAL INDEX



REMOVABLE SUCKER BACK PAD SEAT

All the same features as the popular removable Sucker Seats but with a built-in upright. Black powder coat steel base with a vinyl cover over polyurethane foam. Has six oversized suction cups.

743809 Sucker back pad seat



REAL LEATHER REMOVABLE SUCKER SEATS

All the same features as our other Sucker Seats, so they also stick to a smooth rear fender with suction cups. No tools or hardware needed, just wet the cups and your passenger seat installs in seconds, without scratching your paint. The big difference is that they're covered with Genuine black or brown leather. They measure 24 cm long, 16 cm wide and are 4.5 cm thick.

741642 Black leather

741643 Brown leather



Colony

SEAT MOUNTING KIT

Top-quality show chromed button allen head screws and lock washers to bolt the seat to any Softail frame 1987 thru 1999. Kit contains two 1/2-13x3/4" hex socket button head screws and two lock washers.

741847 Softail seat mounting kit



METAL FLAKE REMOVABLE SUCKER SEATS

All the same features as our other Sucker Seats, so they also stick to a smooth rear fender with suction cups. No tools or hardware needed, just wet the cups and your passenger seat installs in seconds without scratching your paint. The big difference is that they're not black, but come in great looking Metal Flake colors. Available in Small, Medium and ergonomically shaped "Comfort" Medium.

Small 6"x9"x1 3/4" (15x23x4.5cm)

741627 Metal flake blue vinyl

741628 Metal flake gold vinyl

741629 Metal flake green vinyl

Medium 7"x9 1/2"x2" (18x24x5cm)

741631 Metal flake pearl vinyl

741632 Metal flake grey vinyl

741633 Metal flake blue vinyl

741634 Metal flake gold vinyl

741635 Metal flake green vinyl

Comfort Medium 7"x9 1/2"x2" (18x24x5cm)

741639 Metal flake blue vinyl



Butty Buddy

BUTTY BUDDY PASSENGER PILLION

This handy, universal passenger pillion features extra-wide ergonomic seat pads to give your passengers comfort for the long ride. Detaches into 3 segments for easy storage and transport with the included carrying pouch. Available with suction cups for bare rear fender or with clamps to fit over existing, up to 11" (28cm) wide seats. The "over-seat" Butty Buddy features rotational locking mechanisms and comes complete with the required hex tools and anti-blow off straps. Both versions have a lower aggressive gripper surface for a secure fit.

748180 Butty buddy for over existing seats

748181 Butty buddy stick on seat



La Rosa
BUILT BETTER.

LA ROSA SINGLE SHOCK SEAT MOUNT KIT

Includes one 4" (10cm) adjustable spring shock, seat mount bar, frame weld tabs, and all bolts. Beefy powder coated black steel parts can withstand any punishment. Comes fully assembled.

749828 Custom single shock seat mount kit



GENUINE ZODIAC 2 YEARS WARRANTY

UNIVERSAL TILT-UP SEAT BRACKET SQUARE END

Adapts to most seats and frames. Fits all top frame tubes up to 1 3/4" (45mm) and comes with slotted holes for flexibility in mounting. Quality steel construction with chrome plating.

232892 Universal tilt-up seat bracket square end



GENUINE ZODIAC UNIVERSAL SOLO SEAT BRACKETS

Universal stainless steel solo seat brackets feature extra long mounting slots, precision machined pivot pin with brass bushings and come with a raw steel hinge piece that is to be welded to the backbone of the frame.

531061 Polished stainless steel Solo Seat bracket

531062 Black shot-peened stainless steel Solo Seat bracket



LA ROSA SOLO SEAT SPRING MOUNT KITS FOR CHOPPERS & BOBBERS

These custom style mounting kits for Solo seats are great for Custom and Bobber projects. Starter kits include two 1/2" (1.27cm) or 1 1/2" (3.81cm) high, solid steel weld-on frame mounts, a seat mount bar with washers and a pair of hairpins to make removal of your seat a breeze. You can use the starter kit with seat springs of your choice, or order one of our convenient kits with Torsion (also known as Scissor) or Barrel style springs in various lengths.

749716 1/2" (1.27cm) rise

749717 1 1/2" (3.81cm) rise

Complete kits with Torsion (Scissor) springs

1/2" rise 1 1/2" rise
749808 749818

with Chrome 2" (5.1cm) springs
with Black 2" (5.1cm) springs
with Chrome 3" (7.6cm) springs
with Black 3" (7.6cm) springs

749809 749819

749810 749820

749811 749821

Complete 1/2" rise kits with Barrel springs

1/2" rise 1 1/2" rise
749812 749822

with Chrome 3" (7.6cm) springs
with Black 3" (7.6cm) springs
with Chrome 4" (10.0cm) springs
with Black 4" (10.0cm) springs
with Chrome 5" (12.7cm) springs
with Black 5" (12.7cm) springs

749813 749823

749814 749824

749815 749825

749816 749826

749817 749827



SEAT SPRING, CUSTOM TAPERED

Custom style 3" taper seat spring, for almost all Custom solo seat application.

098004 Seat spring, custom tapered



BARREL STYLE SEAT SPRINGS

Universal seat springs, will fit most custom seats and saddles.

098001 Chrome 3" (75mm) seat spring, sold each

749713 Black 3" (75mm) seat springs, sold in pairs

749712 Chrome 4" (100mm) seat springs, sold in pairs

749714 Black 4" (100mm) seat springs, sold in pairs

098003 Chrome 5" (125mm) seat spring, sold each

749715 Black 5" (100mm) seat springs, sold in pairs



OTTODICUORI SOLO SEAT MOUNTS

Italian made laser cut mounts for solo seats. Work great with our Torsion or Barrel style springs and most custom Solo seats. Solo seats on Sportster models can also be rigid mounted using the Rigid Link.

Note for ZPN763008: Fitting on 2007 thru 2009 models requires relocation of the ECM.

763008 [A.] Seat plate, fits 2004-2006 and 2010 to present Sportster, except XR 1200

763009 [B.] Rigid Link for ZPN763008

763007 [C.] Front seat hinge, fits 2004 to present Sportster, 2006 to present Dyna and 2008 to present Softail



SOLO SEAT SHOCK MOUNT KITS

These solo seat twin shock mount kits are suited for custom rigid frame applications. Kits come complete with shock absorbers, top and bottom mount brackets and all required mounting hardware.

243101 Solo seat kit with 4" (102mm) shocks

243102 Solo seat kit with 5" (127mm) shocks

243103 Solo seat kit with 6 1/2" (165mm) shocks



SOLO SEAT BRACKET

Chrome rear bracket for Sportster models from 1957 thru 1978 (except XLCR). Use with our seat springs ZPN098001, 098004 or 098009 and front seat bracket ZPN232892.

533001 Seat bracket



SPORTSTER MOUNTING KIT FOR ECO LINE SPRUNG SOLO SEATS

Sprung mounted solo seats are a true all-time Custom favorite and our Eco Line solos are very nicely priced, yet still high quality. They are available with a vinyl or leather deck in various colors. This kit makes installation of these seats on 2004 to present Sportster models a simple and easy job as it contains all required hardware.

741623 Sprung Solo Seat mounting kit for 2004 to present Sportster



SEAT MOUNTING BRACKET

Chrome plated rear bracket, fits all rigid Big Twins thru 1957. Use with our seat springs ZPN098001, 098004 or 98009 and front seat bracket ZPN232892. Also used for Custom applications.

531046 Seat mounting bracket

01
02
03
04
05
06
07
08
09
10
11
12
13
14
15
16
17
18
19
20
21
22
23
24
25
26



LA ROSA SOLO SEAT MOUNT KITS

Make installation of a solo seat a breeze with these model specific kits. They feature a steel mounting plate and can be ordered with or without springs. Takes most custom spring mounted Solo seats, such as our Le Pera seats ZPN 232849 & 232869, Arrow Solo seats and all our Eco Line Sprung Solo seats.



Fits all 1991 thru 2017 Dyna models

- 749700** Solo seat mount kit without springs
- 749718** With chrome 2" torsion springs
- 749719** With black 2" torsion springs
- 749720** With chrome 3" torsion springs
- 749721** With black 3" torsion springs
- 749722** With chrome 3" barrel springs
- 749723** With black 3" barrel springs
- 749724** With chrome 4" barrel springs
- 749725** With black 4" barrel springs
- 749726** With chrome 5" barrel springs
- 749727** With black 5" barrel springs



Fits all 1982 thru 2003 Sportster models

- 749701** Solo seat mount kit without springs
- 749728** With chrome 2" torsion springs
- 749729** With black 2" torsion springs
- 749730** With chrome 3" torsion springs
- 749731** With black 3" torsion springs
- 749732** With chrome 3" barrel springs
- 749733** With black 3" barrel springs
- 749734** With chrome 4" barrel springs

- 749735** With black 4" barrel springs
- 749736** With chrome 5" barrel springs
- 749737** With black 5" barrel springs



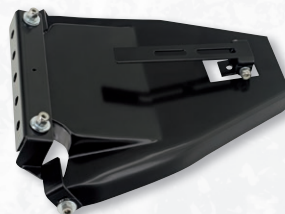
Fits all 2007 thru 2009 Sportster models, except XR1200

- 749702** Solo seat mount kit without springs
- 749738** With chrome 2" torsion springs
- 749739** With black 2" torsion springs
- 749740** With chrome 3" torsion springs
- 749741** With black 3" torsion springs
- 749742** With chrome 3" barrel springs
- 749743** With black 3" barrel springs
- 749744** With chrome 4" barrel springs
- 749745** With black 4" barrel springs
- 749746** With chrome 5" barrel springs
- 749747** With black 5" barrel springs



Fits all 2004 thru 2006 Sportster and all 2010 to present Sportster, except XR1200

- 749703** Solo seat mount kit without springs
- 749748** With chrome 2" torsion springs
- 749749** With black 2" torsion springs
- 749750** With chrome 3" torsion springs
- 749751** With black 3" torsion springs
- 749752** With chrome 3" barrel springs
- 749753** With black 3" barrel springs
- 749754** With chrome 4" barrel springs
- 749755** With black 4" barrel springs
- 749756** With chrome 5" barrel springs
- 749757** With black 5" barrel springs



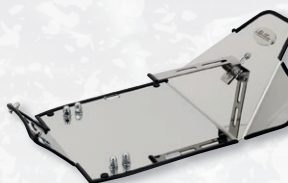
Fits all 1984 thru 1999 Softail

- 749704** Solo seat mount kit without springs
- 749758** With chrome 2" torsion springs
- 749759** With black 2" torsion springs
- 749760** With chrome 3" torsion springs
- 749761** With black 3" torsion springs
- 749762** With chrome 3" barrel springs
- 749763** With black 3" barrel springs
- 749764** With chrome 4" barrel springs
- 749765** With black 4" barrel springs
- 749766** With chrome 5" barrel springs
- 749767** With black 5" barrel springs



Fits all 2000 thru 2017 Softail, except Rocker & Breakout

- 749705** Solo seat mount kit without springs
- 749768** With chrome 2" torsion springs
- 749769** With black 2" torsion springs
- 749770** With chrome 3" torsion springs
- 749771** With black 3" torsion springs
- 749772** With chrome 3" barrel springs
- 749773** With black 3" barrel springs
- 749774** With chrome 4" barrel springs
- 749775** With black 4" barrel springs
- 749776** With chrome 5" barrel springs
- 749777** With black 5" barrel springs



Fits all 2008 to present Touring

- 749706** Chrome solo seat mount kit without springs
- 749778** Chrome with chrome 2" torsion springs
- 749779** Chrome with black 2" torsion springs

- 749780** Chrome with chrome 3" torsion springs
- 749781** Chrome with black 3" torsion springs
- 749782** Chrome with chrome 3" barrel springs
- 749783** Chrome with black 3" barrel springs
- 749784** Chrome with chrome 4" barrel springs
- 749785** Chrome with chrome 4" barrel springs
- 749786** Chrome with chrome 5" barrel springs
- 749787** Chrome with black 5" barrel springs



Fits all 2008 to present Touring

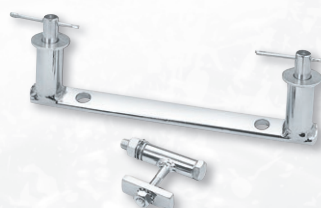
- 749708** Leather covered Solo seat mount kit without springs
- 749798** Leather covered with chrome 2" torsion springs
- 749799** Leather covered with black 2" torsion springs
- 749800** Leather covered with chrome 3" torsion springs
- 749801** Leather covered with black 3" torsion springs
- 749802** Leather covered with chrome 3" barrel springs
- 749803** Leather covered with black 3" barrel springs
- 749804** Leather covered with chrome 4" barrel springs
- 749805** Leather covered with chrome 4" barrel springs
- 749806** Leather covered with chrome 5" barrel springs
- 749807** Leather covered with black 5" barrel springs



TORSION SEAT SPRINGS

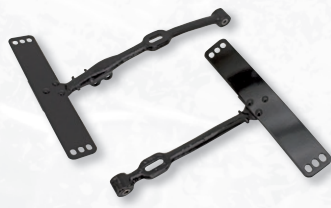
These Torsion-style seat springs are sold in sets. Quite unique is that our sets have one clockwise wound spring and one counter-clockwise wound spring. This does not only look better but also avoids your seat hanging over to one side.

- 098009** Chrome 2", Genuine Zodiac
- 749710** Black 2", La Rosa
- 749709** Chrome 3", La Rosa
- 749711** Black 3", La Rosa

**SOLO SEAT BRACKET**

Chrome Custom solo bracket set for all Softail models from 1984 thru 1988. Includes seat crossbar and special design front bracket with hardware. Solo springs should be purchased separately.

531049 Solo seat bracket

**SAMWEL SEAT T-BARS**

Perfect reproductions of the OEM seat T-bars. The long version is found on early 1930 thru 1973 45CI Side Valve solo models and Servicars and 1930 thru 1964 Big Twin models. And the short version fits 1941 and later WLA models.

745872 Long version (OEM 3105-30, 51900-30)

745873 Short version (OEM 3105-41N)

**CHROME SEAT SPEAR**

The authentic side spear to dress-up the skirts on solo saddles. Will give your bike a more vintage look. Easy to install and sold as a set of 2.

531051 Seat Spear set

**SEAT PLUNGER FOR EARLY 750 & BIG TWIN**

Complete seat plunger assemblies as they were stock on most 1930 thru 1981 models.

745874 Parkerized seat plunger 1930 thru 1973 45CI Side Valve solo and Servicars, and 1930 thru 1936 74CI & 80CI Big Twin (OEM 3121-30 & 51600-30)

782639 Frame seat post bushing 1929 thru 1973 45CI Side Valve solo and Servicar (OEM 3113-29 & 47581-29)

780114 Parkerized seat plunger 1937 thru 1974 Big Twin (OEM 3121-36 & 51610-36)

780113 Chrome seat plunger 1937 thru 1974 Big Twin (OEM 3121-36 & 51610-36)

782638 Frame seat post bushing 1937 thru 1957 Big Twin, Samwel (OEM 3113-36 & 47583-36)

782492 Frame seat post bushing 1937 thru 1957 Big Twin, Colony (OEM 3113-36 & 47583-36)

782647 Seat post rod lock nut & washer, all 1925-1981 models except Sportster. Cad plated, Colony (OEM 51674-25)

**SEAT BRACKET UNIVERSAL**

Chrome plated universal seat bracket. Use with one of our solo seat brackets ZPN232892 to mount the Custom seat of your choice. Fits most Custom frames.

082126 Seat bracket universal



Colony

COLONY SEAT BAR BUSHING SETS

Precision machined, heat treated and ground bushings including mounting hardware.

Fits all 1937 thru 1964 Big Twin and 1929 thru 1973 45CI Solo & Servicar (OEM 51925-37)

237495 [A.] Cad plated

237496 [B.] Parkerized black

Fits all 1965 thru 1980 FL Big Twin (OEM 51925-65)

237497 [C.] Cad plated



Colony

SEAT CLEVIS PIN AND SPRING

Nice reproduction of seat pin and spring retainer used on all models Harley-Davidson with seat post 1929-up. Made in the USA by Colony.

741952 Seat clevis pin and spring

**QUICK RELEASE SEAT PIN**

Replaces the Original Equipment hold down screw through the back of the seat on most models thru 1995. The through pin is held in place by a spring loaded ballstop detent and is easily pushed out enabling you to quickly remove and reinstall your seat. Precision machined from stainless steel, 1/4-28 UNF threaded. Sold each.

370142 Quick release seat pin (each)



Colony

SADDLE TO SEAT TEE MOUNTING KIT

Accurate reproduction of studs, nuts, seat height adjustment spacers, round head bolt and tapered washers to mount the seat to the tee on all Harley-Davidson 1934-1980 models, except FX and XL series. Made in the USA by Colony.

741953 Saddle to seat tee mounting kit

**BUDDY SEAT MOUNT KITS FOR 1937-1954 BIG TWIN**

Parkerized reproductions from the spring yoke assembly and spring seat spring clips to fit the duo seat on 1937-1954 E, EL, F, FL, U & UL Big Twins.

782133 Spring yoke assembly (OEM 52560-36) with springs, spring yoke, spring yoke frame bracket, spring support, mounting studs and fasteners



782134 Seat spring clip kit with spring clips (OEM 52596-36 & 52600-36) and seat bar mount plates (OEM 52543-36) and fasteners



782649 Frame seat post bushings 1958 thru early 1981 Big Twin. Colony, bronze, set of 2 (OEM 47094-58)



782648 Seat post rod lock nut & washer, all 1925-1981 models except Sportster. Parkerized, Colony (OEM 51674-25)

**SEAT TEE KITS FOR SOFTAIL**

These seat tee kits allow you to install 1936 thru 1954 "old style" solo saddles on Softail models "seat post style" as on these hardtail models. Kits include black tee, cylinder with internal spring, nose mount and related hardware. Installation requires drilling and tapping of the frame.

781226 Fits 1984 thru 1999 Softail models

781227 Fits 2000 thru 2017 Softail models

01
HELMETS,
LUGGAGE,
AUDIO & MORE

02
SEAT

03
EXHAUST

04
ELECTRIC
& LIGHT

05
ENGINE
ELECTRICS

06
INTAKE

07
ENGINE

08
PRIMARY

09
TRANSMISSION

10
FINAL DRIVE

11
WHEELS &
TIRE

12
BRAKE

13
FOOT
CONTROL

14
HANDLEBAR

15
FRONT
SUSPENSION

16
CHASSIS/
FRAME
& SHOCKS

17
FENDER
& STRUTS

18
GAS TANK &
INSTRUMENT

19
OIL TANK, FILTER
& LINE

20
FASTENERS

21
MIRROR

22
WINDSHIELD

23
OIL, CHEMICALS
& TOOLS

24
TECHTIPS &
CROSS REF
> ZPN

25
CROSS REF
ZPN > PAGE

26
ALPHABETICAL
INDEX



GENUINE ZODIAC 2 YEARS WARRANTY

REAR SEAT MOUNTING BRACKET WITH RETAINED SCREW

This chrome plated mounting bracket features a retained 1/4-20 UNC mounting screw that features a hex socket for tightening by wrench, as well as a knurled edge for finger tightening. The mounting screw stays attached to the bracket by means of a trick spring loaded system. Fits 1984 to present Softail, 1991 to present Dyna, 1983 thru 2003 Sportster and most 1986 thru 1994 FXR models. Also great for custom applications. Comes complete with nylon washer to protect your paint.

098010 Chrome rear seat mounting bracket



GENUINE ZODIAC 2 YEARS WARRANTY

THUMB SCREW & COVER KIT

This highly polished aluminum screw and cover kit makes it an easy "No tools required" job to take off your saddle. Works on all stock or after market saddles. The seat tab cover is held in place by an attractive machined thumb knob, attached to a steel screw. Gives convenient access with no tools required to remove your saddle. Adds a nice finishing touch for that new saddle you're about to order. Available to fit all late model Harley-Davidsons with 1/4" UNF thread.

531052 Thumb screw and cover kit with two UNF studs (one long and one short stud) to accommodate for both old and late style fenders



SEAT & FENDER NUTS

When you want to mount a Solo or passenger seat and your rear fender has just a hole, sometimes with a plastic plug rather than a nut, inserting this nut kit is the answer. Has 1/4"-20 thread.

789437 Seat & fender nut with clip, each (OEM 59768-97)

789426 Seat & fender nut with clip, 4-pack (OEM 59768-97)



LIQUI MOLY

LIQUI MOLY MOTORCYCLE LEATHER CARE

High-grade care emulsion for treating all smooth leather surfaces. Refreshes the color, protects and maintains the leather. The treated surfaces are given a satin matt gloss with impregnating effect. For leather surfaces made of smooth leather such as seats, saddle bags, leather riding suits, etc.

754614 Liqui Moly motorcycle leather care, 250ml



GENUINE ZODIAC

SEAT HOLD-DOWN SCREW REPAIR KIT

The solution for stripped-out seat hold-down screws. Drill stripped nut out and bolt in the replacement screw. Mounting spacer keeps the seat tab from scratching your fender paint. Made out of mirror polished stainless steel, makes it also ideal for new bikes and fresh paint jobs.

370151 Seat hold-down screw repair kit



Burly

BURLY SISSY BAR FOR SPORTSTER & DYNA

Call it a sissy bar, back rest or chick stick, but agree that it really looks great. TIG welded in the good old USA, the Burly Sissy Bar comes in a short version and a tall that includes a compact pad. Classic styled, one piece sissy bar mounts to outside of fender rails for simple install and removal. Short sissy bars are approx. 13" (33cm) high, tall sissy bars are approx. 20" (51cm) high.

Fits all 2004 to present XL Sportster models

744851 Short black sissy bar without pad

744859 Short chrome sissy bar without pad

744852 Tall black sissy bar with pad

744858 Tall chrome sissy bar with pad

Fits all 1993 thru 2003 Sportster models

747895 Short black sissy bar without pad

747896 Short chrome sissy bar without pad

747897 Tall black sissy bar with pad

747898 Tall chrome sissy bar with pad

Fits 2006 thru 2017 Dyna models, except FXDWG Wide Glide and FXDF Fat Bob

759981 Tall black sissy bar with pad

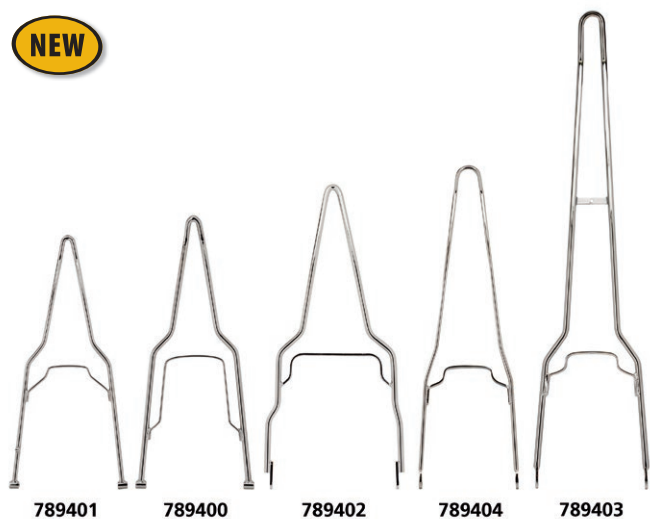
759983 Tall chrome sissy bar with pad

759980 Short black sissy bar without pad

759982 Short chrome sissy bar without pad



NEW



V-TWIN SISSY BARS FOR RIGID FRAMES

Made from solid steel to fit most hardtail frames.

- 789401** Chrome 14mm steel 26" (66cm) high sissy bar for 6" flat fender and 10" (254mm) wide mounts
- 789400** Chrome 16mm steel 28" (71cm) high sissy bar for Bobbed fender and 9.45" (240mm) wide mounts
- 789402** Chrome 16mm steel 31" (79cm) high sissy bar for 9" flat fender and 11.8" (300mm) wide mounts
- 789404** Chrome 14mm steel 33" (84cm) high Captain America sissy bar for 6" flat fender and 9.45" (240mm) wide mounts
- 789403** Chrome 16mm steel 49" (124cm) high Captain America sissy bar for 6" flat fender and 9.65" (245mm) wide mounts



666 STYLE DEVILS TAIL SISSY BARS

Stainless steel sissy bars are made from round tube and feature drilled and threaded lower square ends to fit most OEM and aftermarket side plates. Width given is approximate.

7 1/2" (19cm) wide for Sportster & Dyna

- 749537** 14" (36cm) high, polished
- 749538** 14" (36cm) high, black
- 749539** 20" (51cm) high, polished
- 749540** 20" (51cm) high, black

8 3/4" (22cm) wide for Softail and Touring

- 749541** 14" (36cm) high, polished
- 749542** 14" (36cm) high, black
- 749543** 20" (51cm) high, polished
- 749544** 20" (51cm) high, black

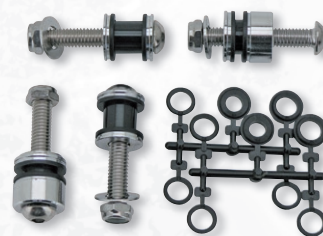


FEHLING

DRIVER BACKREST WITH LUGGAGE RACK 2006-2017 DYNA

To provide you with ease and comfort, Fehling developed this luggage rack with integrated driver sissy bar. Bolts directly to fender struts and rear fender of most 2006 to present Dyna models except 2006 thru 2008 FXDB Street Bob, 2008 thru 2017 FXDF Fat Bob and 2006 thru 2017 FXDWG Wide Glide. Must be used in combination with a solo seat found elsewhere in this catalog. Rack is chrome plated and measures overall 405mm high, 430mm long, and 348mm wide.

- 731956** Driver backrest with integrated luggage rack



GENUINE ZODIAC 2 YEARS WARRANTY

DOCKING KITS FOR DETACHABLE SIDE PLATES

Exact reproductions from the hard to get docking kits for Zodiac and OEM style detachable side plates used to fit OEM accessory luggage.

Fits 1984 thru 1999 FLSTC with Heritage style saddlebags OEM 90835-90C, no turn signal relocation required

- 086093** Fits ZPN 086092 & OEM 53549-95 side plates (OEM 53371-95A)

Fits 1984 thru 1999 FLSTC and 1993 thru 1996 FLSTN with Fat Boy style saddlebags OEM 90381-98, no turn signal relocation required

- 086094** Fits ZPN 086092 & OEM 53549-95 side plates (OEM 53371-95A)

Fits 1994 thru 1996 FXSTC, FXSTS, and FLSTF with Fat Boy style saddlebags OEM 90831-98 or 90833-90C, requires turn signal relocation kit ZPN 086096

- 086094** Fits ZPN 086092 & OEM 53549-95 side plates (OEM 53371-95A)
- 086096** Turn signal relocation kit (OEM 53692-96)



GENUINE ZODIAC 2 YEARS WARRANTY

GENUINE ZODIAC 4-POINT DOCKING KITS

These kits contain all the docking hardware you need to install most aftermarket and OEM Harley Detachable accessories. Even if you only install a passenger backrest this kit allows you to add additional accessories when your demands change. Fits 2014 to present Touring models, except those equipped with rigid-mount Tour-Pak luggage.

- 350001** Chrome (OEM 52300353)
- 350002** Black (OEM 52300354)



GENUINE ZODIAC 2 YEARS WARRANTY

DOCKING HARDWARE KITS FOR MILWAUKEE EIGHT SOFTAIL

Complete docking hardware kits necessary to install OEM detachable accessories such as sissy bar, solo luggage rack, Two-Up luggage rack, Solo Tour-Pak rack and Two-Up Tour-Pak rack.

- 086023** Chrome, fits 2018 to present FLFB & FLFBS Fat Boy and FXBR & FXBRS Breakout (OEM 52300376)



- 086501** Black, fits 2018 to present FLFB & FLFBS Fat Boy and FXBR & FXBRS Breakout (OEM 52300377)

- 086022** Chrome, fits 2018 to present FLDE Deluxe, FLHC & FLHCS Heritage, FLFB Sport Glide, FLFL Slim, FXBB Street Bob, FXFB & FXFBS Fat Bob and FXLR Low Rider (OEM 52300378)

- 086500** Black, fits 2018 to present FLDE Deluxe, FLHC & FLHCS Heritage, FLFB Sport Glide, FLFL Slim, FXBB Street Bob, FXFB & FXFBS Fat Bob and FXLR Low Rider (OEM 52300379)



GENUINE ZODIAC 2 YEARS WARRANTY

V-TWIN EAGLE SISSY BAR INSERTS

Every feather on the eagle, every fin on the engine painstakingly accounted for in the mold to make these beautiful inserts. Mounting hardware is included with each insert.

- 086038** Insert 8", brass
- 086039** Insert 8", chrome

- 01 HELMETS, LUGGAGE, AUDIO & MORE
- 02 SEAT
- 03 EXHAUST
- 04 ELECTRIC & LIGHT
- 05 ENGINE ELECTRICS
- 06 INTAKE
- 07 ENGINE
- 08 PRIMARY
- 09 TRANSMISSION
- 10 FINAL DRIVE
- 11 WHEELS & TIRE
- 12 BRAKE
- 13 FOOT CONTROL
- 14 HANDLEBAR
- 15 FRONT SUSPENSION
- 16 CHASSIS/FRAME & SHOCKS
- 17 FENDER & STRUTS
- 18 GASTANK & INSTRUMENT
- 19 OIL TANK, FILTER & LINE
- 20 FASTENERS
- 21 MIRROR
- 22 WINDSHIELD
- 23 OIL, CHEMICALS & TOOLS
- 24 TECHTIPS & CROSS REF > ZPN
- 25 CROSS REF ZPN > PAGE
- 26 ALPHABETICAL INDEX

01
02
03
04
05
06
07
08
09
10
11
12
13
14
15
16
17
18
19
20
21
22
23
24
25
26



Fits 2004 to present XL Sportster models
Side plates bolt to the inside of the fender struts.

- 758020** Rigid mount side plates, black
- 758016** Sissy bar upright, chrome
- 758018** Sissy bar upright, black

Fits 2000 thru 2006 Softail models, except 2006 FLSTSB, FXST, FXSTB, FXSTC, FXSTS and FXSTSSE

Side plates bolt to the inside of the fender struts.

- 758019** Rigid mount side plates, black
- 758015** Sissy bar upright, chrome
- 758017** Sissy bar upright, black

Fits 2007 thru 2017 FLSTF, FLSTFSE and FLSTFB Fat Boy, 2008-2011 FLSTSB Bad Bones, 2006 thru 2017 FXST, FXSTB, FXSTC, FXSTS and FXSTSSE

Side plates bolt to the outside of the fender struts.

- 758019** Rigid mount side plates, black
- 758016** Sissy bar upright, chrome
- 758018** Sissy bar upright, black

ECO LINE RIGID MOUNT SISSY BARS

Great looking sissy bar and side plates. Uprights are available in chrome and black powder coat and have a 22" (56cm) overall height. Rigid mount side plates are available in black powder coat only. Installation might require relocation of the rear turn signals.

Note: These sissy bars can also be used with most OEM and aftermarket rigid mount side plates. ZPN758015 & 758017 work for 6 7/8" thru 8 1/2" (17.5 thru 21.5cm) wide applications, ZPN758016 & 758018 work for 9 1/2" thru 11" (24 thru 28 cm) wide applications.

Fits 1993 thru 2003 Sportster
Side plates bolt to the inside of the fender struts.

- 758020** Rigid mount side plates, black
- 758015** Sissy bar upright, chrome
- 758017** Sissy bar upright, black

DETACHABLE SISSY BARS

Sometimes you want a sissy bar, sometimes you don't. A detachable sissy bar is exactly what you need. All you have to do is install a Docking Kit, in fact small buttons that are hardly noticeable. When you want your sissy bar on the bike you just slide and click it in position. And when you want it off again, you just click and slide it off in just a few seconds. Please check the table below what parts you have to order as you certainly will need a Docking Kit, a set of detachable side plates and a Grab Rail, Shorty, Low Boy or Mini Low Boy upright. Some models also require a turn signal relocation kit. All parts are offered separately since components fit a variety of models. For unlisted models please check out our rigid mount sissy bars. For the Grab Rail we also have a matching backrest pad with an innovative mounting system available.



	Detachable Side Plates	Docking kit	Turn Signal Relocation kit	Grab Rail	Shorty	Low Boy	Height	Mini Low Boy	Height
FLST 2006	086081	086086	Not required	-	086051	086001	50cm	086003	38cm
FLSTC 1987-1999	086092	086095	Not required	-	-	086001	50cm	086003	38cm
FLSTC 2000-2002	086090	086087	Not required	-	-	086001	50cm	086003	38cm
FLSTC 2003-2017	086090	086088	Not required	-	086051	086001	50cm	086003	38cm
FLSTF 1990-1999	086092	086095	Not required	-	-	086001	50cm	086003	38cm
FLSTF 2000-2001	086081	086085	086082	-	-	086001	50cm	086003	38cm
FLSTF 2002	086081	086085	086083	-	-	086001	50cm	086003	38cm
FLSTF 2003-2006	086081	086086	086084	-	086051	086001	50cm	086003	38cm
FLSTF 2007-2017	086081	086086	086084	-	-	086055	50cm	086053	38cm
FLSTFB 2003-2005	086081	086086	086084	-	-	086001	50cm	086003	38cm
FLSTFB 2007-2017	086081	086086	086084	-	-	086055	50cm	086053	38cm
FLSTFSE 2003-2005	086081	086086	086084	-	-	086001	50cm	086003	38cm
FLSTFSE 2006	086081	086086	086084	-	-	086055	50cm	086053	38cm
FLSTN 2005-2017	086081	086086	Not required	-	086051	086001	50cm	086003	38cm
FLSTS 2000-2001	086090	086088	086082	-	-	086001	50cm	086003	38cm
FLSTS 2002	086090	086088	086083	-	-	086001	50cm	086003	38cm
FLSTS 2003	086090	086088	086084	-	-	086001	50cm	086003	38cm
FLSTSB 2003-2005	086081	086086	086084	-	-	086001	50cm	086003	38cm
FLSTSB 2006-2017	086081	086086	086084	-	-	086055	50cm	086053	38cm
FLSTSC 2005-2007	086081	086088	086084	-	086051	086001	50cm	086003	38cm
FXD 1996-2001	086067	086078	Not required	-	-	086101	41cm	086100	28cm
FXD 2002-2005	086067	086079	Not required	086052	-	086105	41cm	086104	28cm
FXD 2006-2017	086073	086074	086075	-	086051	086001	50cm	086003	38cm
FXDB 2006-2008	086073	086074	086075	-	086051	086001	50cm	086003	38cm
FXDB 2009-2017	086073	086072	086075	-	086051	086001	50cm	086003	38cm
FXDC 2002-2005	086067	086079	Not required	086052	086051	086105	41cm	086104	28cm
FXDC 2006-2014	086073	086074	086075	-	086051	086001	50cm	086003	38cm
FXDF 2010-2017	086073	089089	Not required	-	-	-	-	086055	50cm
FXDL 1996-2001	086067	086078	Not required	-	-	086101	41cm	086100	28cm
FXDL 2002-2005	086067	086079	Not required	086052	086051	086105	41cm	086104	28cm
FXDL 2006-2017	086073	086074	086075	-	086051	086001	50cm	086003	38cm
FXDSE 2007-2008	086073	086074	086075	-	086051	086001	50cm	086003	38cm
FXDWG 1993-2001	086077	086078	Not required	086052	-	086001	50cm	086003	38cm
FXDWG 2002-2005	086077	(OEM 53882-02A)	Not required	086052	086051	086105	41cm	086104	38cm
FXDWG 2006-2008	086073	089089	Not required	-	-	086001	50cm	086003	38cm
FXDWG 2010-2017	086073	086076	086075	-	-	086001	50cm	086003	38cm
FXDX 1999	086067	086078	Not required	-	-	086101	41cm	086100	28cm
FXDX 2002-2005	086067	086079	Not required	086052	086051	086105	41cm	086104	28cm
FXSB Breakout 2013-2017	086081	086024	Not required	-	-	-	-	-	-
FXSE CVO Pro Street Breakout	086081	086024	Not required	-	-	-	-	-	-
FXSBSE CVO Breakout 2013-2014	086081	086024	Not required	-	-	-	-	-	-
FXST 2000-2001	086081	086085	086082	-	086051	086001	50cm	086003	38cm
FXST 2002	086081	086085	086083	-	086051	086001	50cm	086003	38cm
FXST 2003-2005	086081	086086	086084	-	086051	086001	50cm	086003	38cm
FXST 2006-2015	086081	086086	086084	-	-	-	-	086055	50cm
FXSTB 2000-2001	086081	086085	086082	-	086051	086001	50cm	086003	38cm
FXSTB 2002	086081	086085	086083	-	086051	086001	50cm	086003	38cm
FXSTB 2003-2005	086081	086086	086084	-	086051	086001	50cm	086003	38cm
FXSTB 2006-2009	086081	086086	086084	-	-	-	-	086055	50cm
FXSTC 1984-1999	086092	086095	Not required	-	086051	086001	50cm	086003	38cm
FXSTC 2003-2005	086081	086086	086084	-	086051	086001	50cm	086003	38cm
FXSTC 2007-2010	086081	086086	086084	-	-	086055	50cm	086053	38cm
FXSTS 1984-1999	086092	086095	Not required	-	086051	086001	50cm	086003	38cm
FXSTS 2000-2001	086081	086085	086082	-	086051	086001	50cm	086003	38cm
FXSTS 2002	086081	086085	086083	-	086051	086001	50cm	086003	38cm
FXSTS 2003-2005	086081	086086	086084	-	086051	086001	50cm	086003	38cm
FXSTS 2006	086081	086086	086084	-	-	-	-	086055	50cm
FXSTSB 1984-1999	086092	086095	086096	-	086051	086001	50cm	086003	38cm
FXSTSSE 2003-2005	086081	086086	086084	-	086051	086001	50cm	086003	38cm
FXSTSSE 2007-2009	086081	086086	086084	-	-	086055	50cm	086053	38cm
XL Sportster 1994-2003	086070	086071	Not required	-	-	086101	41cm	086100	28cm
XL Sportster 2004 to present	086065	086066	Not required	-	086051	086001	50cm	086003	38cm

01
HELMETS,
LUGGAGE,
AUDIO & MORE

02
SEAT

03
EXHAUST

04
ELECTRIC
& LIGHT

05
ENGINE
ELECTRICS

06
INTAKE

07
ENGINE

08
PRIMARY

09
TRANSMISSION

10
FINAL DRIVE

11
WHEELS &
TIRE

12
BRAKE

13
FOOT
CONTROL

14
HANDLEBAR

15
FRONT
SUSPENSION

16
CHASSIS/
FRAME
& SHOCKS

17
FENDER
& STRUTS

18
GAS TANK &
INSTRUMENT

19
OIL TANK, FILTER
& LINE

20
FASTENERS

21
MIRROR

22
WINDSHIELD

23
OIL, CHEMICALS
& TOOLS

24
TECHTIPS &
CROSS REF
> ZPN

25
CROSS REF
ZPN > PAGE

26
ALPHABETICAL
INDEX


RIGID MOUNT SISSY BARS

Zodiac offers a complete line of very stylish, chrome plated sissy bars for almost all Harley-Davidson models. The side plates are made of heavy plate steel with a highly polished chrome finish. Uprights are made from 9/16" cold rolled solid steel with a deep blue chrome finish. Side plates and uprights are offered separate since several components fit a variety of models. Please refer to our detachable sissy bars for unlisted models.

Note: When ordering a complete sissy bar you must order the side straps with either the Grab Rail, Shorty, Low Boy or Mini Low Boy upright. For the Grab Rail we also have a matching backrest pad with an innovative mounting system available.

086135 Grab rail backrest pad 5 1/2" (14cm) wide, 3" (7.5cm) high, 1 1/4" (3.2cm) thick (OEM 52513-94)



Low Boy

Mini Low Boy


RIGID MOUNT SISSY BARS AND SIDE PLATES

Models	Side Plates	Grab Rail	Height	Shorty	Height	Low Boy	Height	Mini Low Boy	Height
FL 1958-1984	086033	-	-	086051	22cm	086001	50cm	086003	38cm
FLH 1958-1984	086033	-	-	086051	22cm	086001	50cm	086003	38cm
FLH & FLT 1997-2008	086058	-	-	086051	22cm	086001	50cm	086003	38cm
FLHR, FLHX & FLTR 2009-2013	086069	-	-	086051	22cm	086001	50cm	086003	38cm
FLSTF 2000-2005	086057	-	-	086051	22cm	086001	50cm	086003	38cm
FLSTF 2006-2017	086057	-	-	-	-	086055	50cm	086053	38cm
FLSTN 2005-2017	086057	-	-	-	-	086055	50cm	086053	38cm
FLSTS 1997-1999	086034	-	-	086051	22cm	086001	50cm	086003	38cm
FLTSC 2005-2017	086057	-	-	086051	22cm	086001	50cm	086003	38cm
FX 1972-1985	086014	-	-	-	-	-	47cm	086004	34cm
FXD 1991-1995	086060	-	-	-	-	086101	41cm	086100	28cm
FXD 1996-2001	086059	-	-	-	-	086101	41cm	086100	28cm
FXD 2002-2005	086059	-	-	086051	22cm	086105	41cm	086104	28cm
FXD 2006-2017	086063	-	-	086051	22cm	086001	50cm	086003	38cm
FXDB 2006-2008	086063	-	-	-	-	086001	50cm	086003	38cm
FXDC 2006-2017	086063	-	-	-	-	086001	50cm	086003	38cm
FXDF 2008-2013	086062	-	-	-	-	086001	50cm	086003	38cm
FXDL 1996-2001	086059	-	-	-	-	086101	41cm	086100	28cm
FXDL 2002-2005	086059	-	-	086051	22cm	086105	41cm	086104	28cm
FXDL 2006-2017	086063	-	-	-	-	086001	50cm	086003	38cm
FXDSE 2007-2008	086063	-	-	-	-	086001	50cm	086003	38cm
FXDWG 2006-2008	086062	-	-	-	-	086001	50cm	086003	38cm
FXDX 1999	086059	086052	16cm	-	-	-	-	-	-
FXDX 2002-2005	086059	-	-	-	-	-	-	-	-
FXDXT 2001-2005	086059	-	-	-	-	-	-	-	-
FXE 1972-1985	086014	-	-	-	-	-	47cm	086004	34cm
FXR 1982-1994	086035	-	-	-	-	086005	41cm	-	34cm
FXST 1984-1999	086034	-	-	086051	22cm	086001	50cm	086003	38cm
FXSTC 1984-1999	086034	-	-	086051	22cm	086001	50cm	086003	38cm
FXSTS 1988-1999	086034	-	-	086051	22cm	086001	50cm	086003	38cm
FXWG 1980-1986	086034	-	-	086051	22cm	086001	50cm	086003	38cm
XL 1957-1978	086010	-	-	-	-	086028	47cm	086002	34cm
XL 1979-1993	086012	-	-	-	-	-	47cm	086004	34cm
XL 1994-2003	086056	-	-	-	-	086101	41cm	086100	28cm
XL 2004 to present	086064	086052	16cm	086051	22cm	086105	41cm	086104	28cm