



Carburetors

06-086



Carburetor Parts

06-086



Fuel Injection

06-089



Manifolds

06-090



Air Cleaners

06-092

06

01
HELMETS,
LUGGAGE,
AUDIO & MORE02
SEAT03
EXHAUST04
ELECTRIC
& LIGHT05
ENGINE
ELECTRICS06
INTAKE07
ENGINE08
PRIMARY09
TRANSMISSION10
FINAL DRIVE11
WHEELS &
TIRE12
BRAKE13
FOOT
CONTROL14
HANDLEBAR15
FRONT
SUSPENSION16
CHASSIS/
FRAME
& SHOCKS17
FENDER
& STRUTS18
GAS TANK &
INSTRUMENT19
OIL TANK, FILTER
& LINE20
FASTENERS21
MIRROR22
WINDSHIELD23
OIL, CHEMICALS
& TOOLS24
TECHTIPS &
CROSS REF
> ZPN25
CROSS REF
ZPN > PAGE26
ALPHABETICAL
INDEX

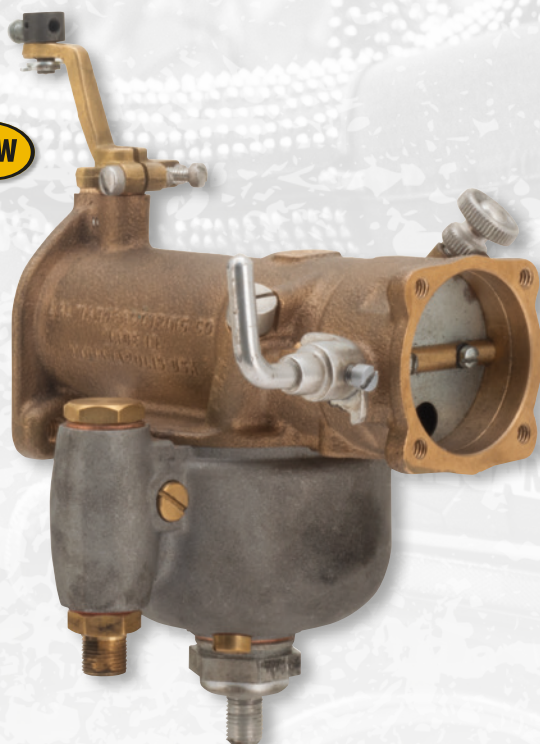


REPLICA KEIHIN CV CARBURETOR

A perfect replica from the Keihin CV (Constant Vacuum) carburetor. All interior parts are the same quality items as we supply them from Cycle Pro. It also features Cycle Pro's upgraded slide spring for improved throttle response, their Super Flow emulsion tube as supplied with their EZ Quick Tuner kits and gives access to the idle mixture screw. Carburetor comes complete with a selection of main- and slow jets and instruction sheet to tune it for your model and year. Tuned engines may require the separate purchase of bigger jets.

Fits 1988-2006 Sportster, 1990-1999 Big Twin, 1999-2006 Twin Cam and carbureted Buell

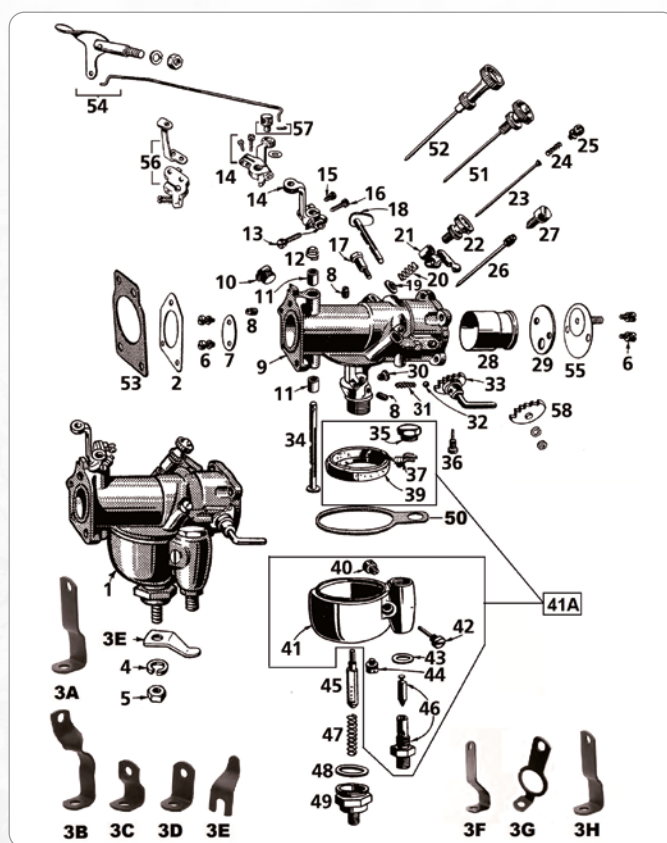
747464 Cycle Pro's replica Keihin CV carburetor



REPLICA LINKERT M88 CARBURETOR

Completely built in Europe from all new parts this replica carburetor looks completely the same as the original found on 1940 and later WLA and WLC 45CI Side valve (Army) models.

782999 Replica Linkert M88 carburetor (OEM 1133-41M)



LINKERT CARBURETOR

Pos.	ZPN	Description	OEM
1	-	Carburetor assembly, Linkert M-88, WLA & WLC	27122-41
-	760654	Gasket kit, James, contains all gasket and seals	-
2	234557	Gasket, James, 3-hole, 10-pack	27410-39
2	700239	Gasket, Athena, 3-hole, 10-pack	27410-39
3A	758544	Support kit, Type 2, parkerized, 1948-1953 EL & FL, Colony	27431-41
3B	758547	Support kit, parkerized, late 1955-1965 FL, Colony	27431-41B
3C	758548	Support kit, parkerized, 1930-1938 VL & UL, Colony	27034-33
3D	758550	Support kit, parkerized, 1939-1948 UL, Colony	27430-39
3E	237461	Support kit, parkerized, 1936-1952 W, 1936-1958 G, Colony	27432-36
3F	758549	Support kit, parkerized, 1936-1940 EL, Colony	1110-36
3H	758546	Support kit, parkerized, 1954-early 1955 FL, Colony	27431-41A
3G	758545	Support kit, Type 1, parkerized, 1941-1947 EL, Colony	27431-41
4	743953	Washer 3/8"	7045
5	743987	Nut, 3/8"-24	7793
6	-	Screw	993
7	745793	Disc, 1.25" carbs on WL & UL	27280-24
7	745796	Disc, 1.25" carbs on WL & UL +.030"	-
7	745794	Disc, 1.50" carbs on Knucklehead	27280-40
7	745797	Disc, 1.50" carbs on Knucklehead, oversized	-
7	745795	Disc, 9-X, Panhead	27280-51
7	745798	Disc, 9-X, Panhead, oversized	-
7	745800	Disc, No. 10, 35mm	-
7	745799	Disc, No. 12, 39mm	-
8	745819	Plug	27327-24
9	-	Body	-
10	745805	Plug	27325-33
11	745801	Bushing, all models	27290-24
12	745802	Spring	27291-32
13	762606	Screw, 10-24x5/8", cad plated, 10-pack	1206
13A	745785	Screws pos. 13, 15 & 16, 30-pack	997 + 1070 + 1206
14	745784	Lever with screws pos. 12, 15 & 16, 1937-1948 UL, 1937-1956 WL	27252-37
14	745786	Lever with screws pos. 13, 15 & 16, VL	-
15	762601	Screw, 6-32x3/8", cad plated, 10-pack	997
16	762605	Screw, 6-32x3/4", cad plated, 10-pack	1070
17	237467	Screw, Colony USA	27397-27
18	745774	Shaft, all side valve models	27215-33

Pos.	ZPN	Description	OEM
18	745775	Shaft, all 1936-1947 OHV models	27218-36
18	789399	Shaft, all 1948-1965 OHV models	27218-48
19	745818	Collar, Sidevalve models	27345-27
19	758535	Collar, OHV models	27345-41
20	745820	Spring	27349-27
21	782687	Lever, Samwel	27395-27
22	-	Screw	27350-11
23	745817	Low speed needle	27336-27
23	745816	Low speed needle with spring #24 and screws #22 & 25	27337-27
24	-	Spring	27349-11
25	-	Screw	27351-11
26	745807	High speed needle for M88 carbs	27298-40
26	745810	As ZPN 745807 with longer thread for worn M88 carbs	-
27	745803	Screw	27304-40
28	237480	Venturi 1", 1934-1948 74 & 80CI Sidevalve, 1930-1941 45CI except W & G (Carb. M41, M42, M51, M52, M54, M88)	27361-30
28	237476	Venturi 1 1/16", 1934-1948 74 & 80CI Sidevalve, 1930-1952 45CI except W and G (carb. M5, M41, M42, M51, M52)	27362-30
28	237479	Venturi 1 1/8", Special for 1 1/4" carburetor M41 & M51	27363-30
28	237478	Venturi 1 1/8", 1940-1952 61CI OHV (Carb. M35, M35T, M36)	27363-40
28	237477	Venturi 1 5/16", 1941-1954 OHV (Carb. M25, M45, M45A, M74, M74B, M75)	27363-41
28	237475	Venturi 15/16", late 1941-1943 WLA & WLC (Carb. M88)	27364-41
29	745776	Air intake choke disc, all Sidevalve models	27225-24
30	745804	Jet	27318-41
31	782664	Spring, dealer 10-pack	27405-26
32	782665	Ball, 10-pack	27406-26
33	745777	Lever, chrome, civilian	27235-33
33	745778	Lever, WLA & WLC	27243-41
33	745779	Lever, early type VL, RL, UL & WL	27228-33
34	745790	Shaft, 1.25" carbs, 1942-1948 Big Twin, 45CI 1930-1952	27275-24
34	745986	Shaft ZPN 745790 with problem solving seal	27275-24
34	745789	Shaft, 1" carbs, 45CI 1936-1954	27275-26
34	745791	Shaft ZPN 745792 with problem solving seal	27276-40
35	745829	Cap	27390-33
36	745781	Screw	27251-24
37	745826	Lever	27381-33
38	745827	Special screw and nut, float mounting	-
39	780278	Float, cork	27380-33
39	745825	Float, copper	27380-33, 27380-50
39	745824	Float, Nitrophyl, Samwel	27380-33, 27380-50
39	789831	Float, Nitrophyl, V-Twin Mfg.	27380-33, 27380-50
40	782666	Screw	27384-16
41	782667	Float bowl only, Sidevalve	27370-24
41	782811	Complete float bowl assembly, Sidevalve	27370-24
41	782668	Bowl, late 1 1/4" carburetor	27370-33
41	782669	Bowl, 1 1/2" carburetor, 1936-1954 OHV	27371-36
42	745773	Pin	27383-11
43	782670	Washer, 10-pack	27402-33
44	745823	Screw	27377-39
45	745814	Nozzle, all Side Valve models	27331-33
45	745815	Nozzle, Knucklehead	27331-40
46	745828	Valve and seat, Samwel	27382-33
46	749829	Valve and seat, V-Twin Mfg.	27382-33
47	745813	Spring	27330-33
48	745822	Gasket	27376-28
49	745821	Bowl nut, white plated, Samwel	27375-29
49	745987	Bowl nut with Pos. 48, nut & washer, cad plated, Colony	27375-29
50	234556	Float bowl gasket, James, 10-pack	27391-36
50	700238	Float bowl gasket, Athena, 10-pack	27391-36
50	745772	Set of 4 carburetor to manifold screws & washers	27422-39
51	745806	Adjustable high speed needle	27297-27
51	745809	As ZPN 745806 with longer thread for worn carbs	-
52	745808	Adjustable high speed needle, Knucklehead	27297-40
52	745811	Adjustable high speed needle for 1" Schebler & Linkert	27297-30
52	745812	High speed needle for M74 carbs and Panhead	-
53	234558	Gasket, James, 4-hole, 10-pack	27411-40
53	700241	Gasket, Athena, 4-hole, 10-pack	27411-40
54	745780	Lever with rod 1933-1940, Knucklehead	27236-38 & 27244-40
55	745776	Air intake choke disc, all 1930-1947 & 1948 sidevalve models	27225-24
55	789398	Air intake choke disc, 1948-1965 OHV models	27225-48

Pos.	ZPN	Description	OEM
56	782145	Lever with screws 13, 15 & 16, 1941-1947 Knucklehead, 1937-1952 WL, 1937-1956 G	27260-40
56	745787	Lever with screws 13, 15 & 16, 1948 Panhead	27260-48
56	745788	Lever with screws 13, 15 & 16, 1949-up Panhead	27265-49
57	745783	Wire nipple & screw, Samwel	27450-36 & 510
57	236923	Wire nipple & screw, Colony	-
57	236924	Wire nipple & screw, .005" oversize, Colony	-
58	745782	Air intake stop, all OHV Big Twin	27219-36



CV CARBURETOR SUPPORT BRACKET FOR PANHEAD & SHOVELHEAD
Zinc plated two-piece support bracket to ins tall a Keihin CV carburetor on 1948-1965 Panhead and 1966-1984 Shovelhead. Includes two gaskets; one to fit between the carburetor and bracket, the other one to fit between the bracket and the air cleaner.
789927 Keihin CV bracket for 1948-1984 Big Twin

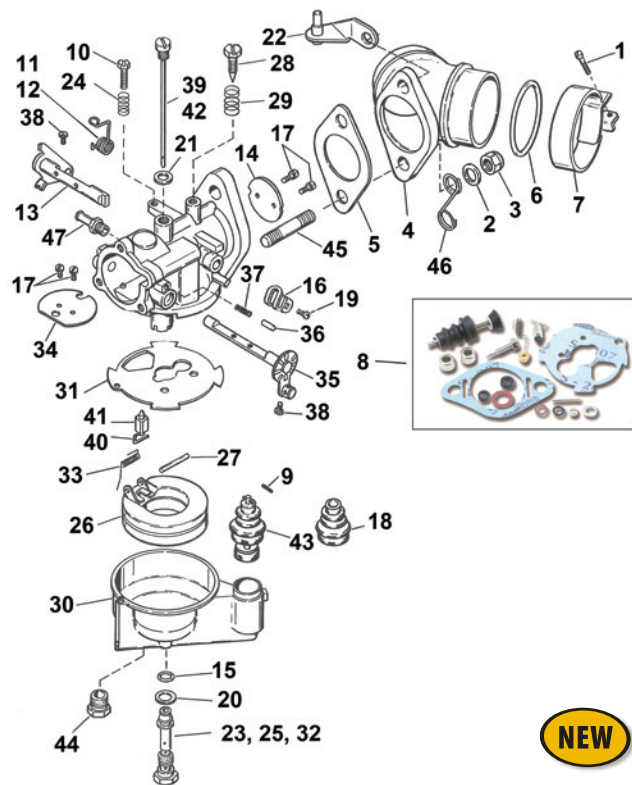


BENDIX CARBURETOR KIT
Complete kit with Bendix carburetor with adjustable main jet, 7 inch round air cleaner, support bracket, throttle grip set, throttle cable, manifold, manifold clamps, required hardware and adapters for use on 1966-1978 O-ring style cylinder heads.
789952 Bendix carburetor kit, fits 1966-1984 Shovelhead



SIFTON BOMB SIGHT VENTURI FOR S&S SUPER E CARBURETOR
Hop up the performance from your S&S Super E carburetor with this kit that includes a redesigned emulsion tube and bomb sight annular booster tube.
789980 Super E hop-up kit

01	HELMETS, LUGGAGE, AUDIO & MORE
02	SEAT
03	EXHAUST
04	ELECTRIC & LIGHT
05	ENGINE ELECTRICS
06	INTAKE
07	ENGINE
08	PRIMARY
09	TRANSMISSION
10	FINAL DRIVE
11	WHEELS & TIRE
12	BRAKE
13	FOOT CONTROL
14	HANDLEBAR
15	FRONT SUSPENSION
16	CHASSIS/FRAME & SHOCKS
17	FENDER & STRUTS
18	GAS TANK & INSTRUMENT
19	OIL TANK, FILTER & LINE
20	FASTENERS
21	MIRROR
22	WINDSHIELD
23	OIL, CHEMICALS & TOOLS
24	TECHTIPS & CROSS REF > ZPN
25	CROSS REF ZPN > PAGE
26	ALPHABETICAL INDEX



BENDIX CARBURETOR PARTS

A wide selection of parts for the Bendix carburetors as used on all 1971-1975 Sportster, FL and FX models. Unless differently indicated all parts are sold each. When you need more than one of an item this is indicated between parenthesis, for example (2).



Pos.	ZPN	Description
-	789952	Carburetor assy. /w throttle, V-Twin
1	-	Screw 10-24 x 1-1/4" (2)
2	-	Washer 11/32" x 11/16" x 1/16" (2)
3	-	Locknut 5/16"-24 x 11/32" x 1/2" (2)
4	789976	Intake manifold, S&S
5	700232	Manifold gasket, 10-pack Athena
6	022370	Manifold O-ring, 10-pack, James
6	700233	Manifold O-ring, 10-pack, Athena
6	740600	Manifold O-ring, Viton, 10-pack, James
7	061137	OEM style manifold clamps with O-rings, pair
7	061210	Brass 2-piece manifold clamp, pair
8	012615	Carburetor rebuild kit, Genuine Zodiac
9	-	Roll pin, accelerator pump
10	-	Screw 8-32 hex, throttle stop
11	-	Spring, throttle return 1971-1973
12	-	Spring, throttle return 1974-1975
13	-	Throttle shaft and lever
14	-	Throttle plate
15	-	O-ring, main jet
16	-	Accelerator lever
17	-	Plate screw with washer #1/8-40 (4)
18	-	Boot, accelerator pump
19	-	Accelerator lever screw #4-36
20	-	Washer, main jet
21	-	Washer, idle jet
22	-	Bracket, throttle cable, 1975
23	-	Main jet 0.90mm (C66-173), 1971-1974
24	789953	Throttle stop screw spring, 10-pack
25	-	Main jet 0.95mm (C66-174), 1971-1974
25	-	Main jet 1.00mm (C66-155), 1971-1974
25	-	Main jet 1.05mm (C66-156), 1971-1974

OEM
27155-72B
930
616
7725
27021-71A
27023-71
27060-55
27060-55
27060-55
27063-57
27063-57
27132-71
27164-71
27271-71
27272-71
27272-74
27281-71A
27282-71
27326-71
27341-71
27342-71
27389-71
27396-71
27403-71
27404-71
27459-74
27612-71
27613-71
27614-71
27618-71
27619-71

Pos.	ZPN	Description
25	-	Main jet 1.10mm (C66-157), 1971-1974
25	-	Main jet 1.15mm (C66-143), 1971-1974
25	-	Main jet 1.20mm (C66-158), 1971-1974
25	-	Main jet 1.25mm (C66-159), 1971-1974
26	789954	Float, brass, V-Twin Mfg.
27	-	Float pin
28	-	Idle adjusting screw
29	-	Spring, idle adjusting screw
30	789955	Float bowl assy, V-Twin
31	789975	Float bowl gasket, Jmes, 10-pack
32	789956	Main jet, 0.95mm (C66-183-19), 1975
32	789957	Main jet, 1.00mm (C66-183-20), 1975
32	789958	Main jet, 1.05mm (C66-183-21), 1975
32	789959	Main jet, 1.10mm (C66-183-22), 1975
32	789960	Main jet, 1.15mm (C66-183-23), 1975
32	789961	Main jet, 1.20mm (C66-183-24), 1975
33	789962	Float pin spring, 10-pack
34	-	Choke plate
35	-	Choke shaft and lever
36	-	Pin, choke friction spring
37	-	Choke friction spring
38	-	Wire block screw #8-36 (2)
39	-	Idle jet, 0.60mm
40	-	Fuel valve clip
41	789963	Float needle with clip
42	-	Idle jet, 0.65mm
43	012619	Accelerator pump assembly, Genuine Zodiac
44	-	Float bowl drain plug
45	789964	Mount stud 5/16"-24 x 1-1/2", set of 2
46	-	Cable guide
47	-	Inlet fitting

OEM
27620-71
27621-71
27622-71
27623-71
27630-71
27631-71
27641-71
27642-71
27645-71
27646-71
27651-75
27652-75
27653-75
27654-75
27655-75
27656-75
27659-71
27663-71
27664-71
27665-71
27666-71
27686-71
27725-71
27737-71
27748-71
27750-72
27762-71A
27763-71
33298-65
45092-66
63578-52



Dynojet

DYNOJET POWER COMMANDER 5 FUEL INJECTION TUNER

The PCS series includes all selections from the PC III plus more. The first new feature is "Rev X-tend". This will give you the ability to have an increased rev limit over stock without having to modify the bike's ECM. No longer will you need to take the bike to the dealer to have the ECM "re flashed" in order to have the higher rev limit your bike needs with modified cams, heads, etc. The second new feature is "Start Fuel". This allows you to add additional fuel during startup. Previously the PCIII enabled you to add extra fuel during startup based on "number of revolutions" of the engine. Now, the PCS can read the exact engine temperature through the bike's own ECM which allows the tuner to choose how much fuel to add for a given engine temp. Cold starting on heavily modified engines should now be much more controllable and easy to adjust.

More basic features include:

- Fuel and Timing control.
- Software displays J1850 data from the bikes stock ECU (this is data such as temp, fuel pulse width, timing advance, spark knock, etc.).
- USB powered from computer (9 volt adapter is no longer needed for programming).
- 2 Position map switching function built in (map switch not included). You can add any SPST switch (this is a simple open/closed style switch) and toggle between two different fuel/timing maps. One could be for power and the other fuel economy. You might also have a high octane and low octane map (with different ignition timing settings).
- Gear/Speed input (allows for map adjustment based on gear).
- Analog input (allows user to install any 0-5 volt sensor and build an adjustment table based on its input such as boost or temperature).
- Enhanced "accelerator pump" utility (increased adjustment and sensitivity ranges).
- Reduced size, the PCS is less than half of the size of the PCIII.
- With gear position input connected the PCS is capable of allowing each cylinder to be mapped individually and for each gear (for example: on a 2 cylinder bike with a six speed transmission there could be up to 12 separate fuel tables).
- Unit has a -100/+250% fuel change range (up from -100/+100%). This allows more adjustment range for your injected Harley-Davidson.
- 10 Throttle position columns (up from 9 on PCIII).

Also new for the Power Commander 5 is a separate available Auto-Tune kit. The Auto-Tune kit includes control boxes, two M18x1.5 Wide Band O2 sensors, and weld-in sensor bungs required for models with three-wire type pre-heated O2 sensors or that do not have O2 sensor bungs at all. Plugs directly into the PCS and allows automatic fuel adjustments while riding. It can map each cylinder separately for each gear if needed (basic settings would make one map for all gears). Each map cell is individually adjustable so you can specify an exact Air Fuel Ratio value for each area if needed. This allows the tuner/user to select specific AFR targets for idle, cruise, and large throttle opening areas. By doing this you can automatically tune the cruise area for best fuel economy while at the same time achieve maximum power at wide-open throttle. If Dynojet does not have the exact map for your combination of parts you simply need to choose the closest one and let the Auto-Tune kit do the rest. These special maps are downloadable at www.powercommander.com

712033 Fits XG 500 (Street 500) 2015 to present

712036 Fits XG 750 (Street 750) 2015 to present

711995 Fits 883 Sportster 2007-2009

712014 Fits 883 Sportster 2010-2013

712034 Fits 883 Sportster 2014 to present

711996 Fits 1200 Sportster 2007-2009

712013 Fits 1200 Sportster 2010-2013

712031 Fits 1200 Sportster 2014 to present

712027 Fits Touring 2002-2006

712028 Fits Touring 2007

712010 Fits Touring 2008-2013

712032 Fits Touring 2014-2016

712038 Fits Touring 2017 to present

712024 Fits Softail 2001-2006

711998 Fits Softail 2007-2011, except 2009-2011 FLSTN, FLSTSB & CVO models

712030 Fits 2007-2011 FLSTN Softail

712021 Fits Softail 2012-2015

760018 Fits Softail 2016-2017

712039 Fits Softail 2018 to present

712025 Fits Dyna 2004-2006 (2006 models without O2 sensors)

711999 Fits Dyna 2006-2011 (2006 models with O2 sensors)

712022 Fits 96 and 103CI Dyna 2012-2017

712037 Fits 110CI Dyna 2016-2017

712026 Fits V-Rod 2002-2007

712000 Fits V-Rod 2008-2011

712020 Fits V-Rod models 2012 thru 2017

712009 Fits XR1200 models 2009

712015 Fits XR1200 models 2010-2013

712040 Fits 2014 to present Indian Chief, Indian Chieftain, Indian Roadmaster & Indian Springfield models

712041 Fits 2015 to present Indian Scout 60 with ABS and all 2018 to present Indian Scout 69

712042 Fits 2017 to present Indian Scout 60 models without ABS

712043 Fits 2020 to present Indian Challenger

712033 Fits XG 500 (Street 500) 2015 to present

712036 Fits XG 750 (Street 750) 2015 to present

711995 Fits 883 Sportster 2007-2009

712014 Fits 883 Sportster 2010-2013

712034 Fits 883 Sportster 2014 to present

711996 Fits 1200 Sportster 2007-2009

712013 Fits 1200 Sportster 2010-2013

712031 Fits 1200 Sportster 2014 to present

712027 Fits Touring 2002-2006

712028 Fits Touring 2007

712010 Fits Touring 2008-2013

712032 Fits Touring 2014-2016

712038 Fits Touring 2017 to present

712024 Fits Softail 2001-2006

711998 Fits Softail 2007-2011, except 2009-2011 FLSTN, FLSTSB & CVO models

712030 Fits 2007-2011 FLSTN Softail

712021 Fits Softail 2012-2015

760018 Fits Softail 2016-2017

712039 Fits Softail 2018 to present

712025 Fits Dyna 2004-2006 (2006 models without O2 sensors)

711999 Fits Dyna 2006-2011 (2006 models with O2 sensors)

712022 Fits 96 and 103CI Dyna 2012-2017

712037 Fits 110CI Dyna 2016-2017

712026 Fits V-Rod 2002-2007

712000 Fits V-Rod 2008-2011

712020 Fits V-Rod models 2012 thru 2017

712009 Fits XR1200 models 2009

712015 Fits XR1200 models 2010-2013

712040 Fits 2014 to present Indian Chief, Indian Chieftain, Indian Roadmaster & Indian Springfield models

712041 Fits 2015 to present Indian Scout 60 with ABS and all 2018 to present Indian Scout 69

712042 Fits 2017 to present Indian Scout 60 models without ABS

712043 Fits 2020 to present Indian Challenger



Optional

711994 Auto-Tune kit for 2007-2013 XL and XR Sportster, 2008-2011 V-Rod, 2007-2011 Softail and 2006-2011 Dyna

712011 Auto-Tune kit for 2002-2007 and 2012 thru 2017 V-Rod, 2002-2013 Touring, 2001-2006 Softail and 2004-2005 Dyna

712029 Auto-Tune kit for 2011 to present Softail, 2012 to present Dyna, 2014 to present Sportster and 2014 to present Touring

01
HELMETS,
LUGGAGE,
AUDIO & MORE

02
SEAT

03
EXHAUST

04
ELECTRIC
& LIGHT

05
ENGINE
ELECTRICS

06
INTAKE

07
ENGINE

08
PRIMARY

09
TRANSMISSION

10
FINAL DRIVE

11
WHEELS &
TIRE

12
BRAKE

13
FOOT
CONTROL

14
HANDLEBAR

15
FRONT
SUSPENSION

16
CHASSIS/
FRAME
& SHOCKS

17
FENDER
& STRUTS

18
GAS TANK &
INSTRUMENT

19
OIL TANK, FILTER
& LINE

20
FASTENERS

21
MIRROR

22
WINDSHIELD

23
OIL, CHEMICALS
& TOOLS

24
TECHTIPS &
CROSS REF
> ZPN

25
CROSS REF
ZPN > PAGE

26
ALPHABETICAL
INDEX


DIAG-4-BIKE TUNING DONGLE

Diag-4-Bike software allows to flash-tune a motorcycle with one of these Tuning Dongles. The dongle unlocks the ECM of one motorcycle, stores the original calibration and allows to flash a new calibration to the ECM.

732045 Advanced tuning dongle for Harley-Davidson, each

732038 Advanced tuning dongle for Harley-Davidson, set of 3+1 Free



735444 Advanced tuning dongle for Indian, each

Diag-4-Bike Tuning Dongles

Option	Harley-Davidson	Indian
Flash tune files (mappings) from the built-in database	Yes	Yes
Create your own tune files (mappings) using a dyno	Yes	No
AFR (Air/Fuel Ratio) map adjustment	Yes	No
VE (Volumetric Efficiency) map adjustment	Yes	No
Fuel map adjustment	Full control	No
Ignition map adjustment	Yes	No
Idle RPM map adjustment	Yes	No
Acceleration enrichment adjustment	Yes	No
Rev (RPM) limit adjustment	Yes	No
Engine displacement adjustment	Yes	No
Injector size adjustment	Yes	No
Lambda closed loop adjustment	Yes	No
Throttle-By-Wire response delay adjustment	Yes	No
Cranking fuel map adjustment	Yes	No
Warmup map adjustment	Yes	No
Idle speed adjustment on Milwaukee Eight models	Yes	No
Idle Air Control steps warmup map adjustment	Yes	No
Idle Air Control steps Crank to run map adjustment	Yes	No
Speed limit adjustment on 2017 and later models	Yes	No
Blank ECM flash	Yes	No
Re-flash ECM from an other year or model	Yes	No


Daytona Twin Tec
OXYGEN SENSOR ELIMINATOR KITS

These O2 sensor eliminator kits are used when you want your bike to run without O2 sensors for example when you want to change air/fuel ratio at idle and part throttle for racing applications. They plug into the stock wiring harness to avoid that warning light coming up or fault codes appearing on your instruments. They simulate a cold sensor condition and cause the ECM to remain in "open-loop" operation. Sold in sets of 2.

Zodiac European made

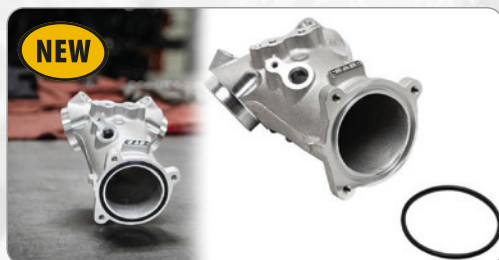
744444 Fits 2012 to present Softail, Dyna and Touring, and 2007-2013 Sportster with 4-wire heated O2 sensors, including Euro5 rear sensors

Daytona Twin-Tec

742043 Fits 2006-2011 models with unheated M18 threaded O2 sensors

742044 Fits 2012 to present Softail, Touring & Trike, 2012-2017 Dyna and 2007-2013 Sportster with 4-wire heated O2 sensors, including Euro5 rear sensors

742068 Fits 2014 to present Sportster


S&S PERFORMANCE MANIFOLD FOR MILWAUKEE EIGHT

This cast aluminum High-Flow manifold adds 3-5 HP and is straight replacement for the stock polymer unit. Comes complete with rubber seal. A must-have for top-level performance. Fits all 2017 to present Touring, all 2017 to present Trike and all 2018 to present Softail.

795057 S&S High-Flow manifold for Milwaukee Eight (OEM 27300121)


CARBURETOR TO MANIFOLD STUDS

Set of two 5/16"-24x1 1/2" studs to mount the carburetor to the manifold on 1967-1977 Sportster, 1965-1977 FL Big Twin and 1971-1977 FX.

789964 Set of two 5/16"-24x1 1/2" studs (OEM 33298-65)


STOCK REPLACEMENT FUEL INJECTORS

Precision made fuel injectors are sold in pairs.

747577 Fits 2002-2016 Touring, 2009-2016 Trike, 2001-2017 Softail and 2004-2017 Dyna (OEM 27609-01B)

747578 Fits 2002-2017 V-Rod (OEM 27665-01A)

747579 Fits 2007 to present Sportster (OEM 27706-07A)



DAYTONA TWIN TEC HIGH PERFORMANCE FUEL INJECTORS

Daytona Twin Tec fuel injectors for all 2001-2017 Delphi fuel injected Twin Cams and all 2002-2017 V-Rods. Made in the USA using the latest injector technology and sold in matched sets (two injectors) including a detailed test report.

Fits 2001-2005 Delphi Fuel Injection

- 745585** Fuel injectors, set of two, 4.5 gm/sec flow rate
- 745589** Fuel injectors, set of two, 5.4 gm/sec flow rate
- 745577** Fuel injectors, set of two, 6.2 gm/sec flow rate
- 745590** Fuel injectors, set of two, 7.1 gm/sec flow rate
- 745578** Fuel injectors, set of two, 7.8 gm/sec flow rate
- 745579** Fuel injectors, set of two, 8.5 gm/sec flow rate
- 745581** Fuel injectors, set of two, 9.2 gm/sec flow rate
- 745582** Fuel injectors, set of two, 9.8 gm/sec flow rate
- 745583** Fuel injectors, set of two, 10.6 gm/sec flow rate

Fits 2006-2017 cable operated Delphi Fuel Injection

- 745587** Fuel injectors, set of two, 3.9 gm/sec flow rate
- 745588** Fuel injectors, set of two, 6.2 gm/sec flow rate
- 745498** Fuel injectors, set of two, 5.4 gm/sec flow rate

Fits 2007-2017 Twin Cams with Throttle-By-Wire Delphi Fuel Injection and all 2002-2017 V-Rod

- 745589** Fuel injectors, set of two, 5.4 gm/sec flow rate
- 745577** Fuel injectors, set of two, 6.2 gm/sec flow rate
- 745590** Fuel injectors, set of two, 7.1 gm/sec flow rate
- 745578** Fuel injectors, set of two, 7.8 gm/sec flow rate
- 745579** Fuel injectors, set of two, 8.5 gm/sec flow rate
- 745581** Fuel injectors, set of two, 9.2 gm/sec flow rate
- 745582** Fuel injectors, set of two, 9.8 gm/sec flow rate
- 745583** Fuel injectors, set of two, 10.6 gm/sec flow rate

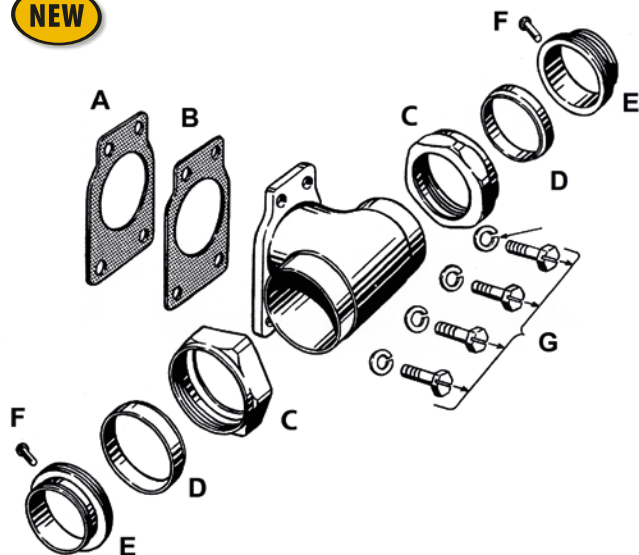


MAP SENSORS AND REPLACEMENT PARTS FOR ELECTRONIC FUEL INJECTION
MAP sensors and replacement parts for the OEM Electronic Fuel Injection (EFI). All replacement parts meet or exceed factory specifications. Available are fuel injectors, IAS kits (Intake Air Temperature Sensor), MAP (Manifold Air Pressure) sensor, TPS (Throttle Position Sensor), barometric pressure sensors and fuel pressure regulators. All these parts are sold each unless mentioned otherwise.

- A. 722018** Fuel injector, 2001-2005 Softail, 2002-2005 Dyna, 2002-2016 Touring & 2009-2016 Trike, Standard Motor Products (OEM 27609-01, 27609-04)
- A. 747577** Fuel injector, fits 2001-2005 Softail, 2002-2005 Dyna, 2002-2016 Touring and 2009-2016 Trike, Cycle Pro, Pair (OEM 27609-01, 27609-04)
- B. 721734** Intake air temperature sensor kit for Magneti Marelli EFI, fits 1995-2001 Touring, made by Standard Motor Products (OEM 27270-95)
- B. 760545** Intake air temperature sensor kit for Magneti Marelli EFI, fits 1995-2001 Touring, S&S/Viola V-Twin (OEM 27270-95)
- C. 722016** Barometric pressure sensor, 1995-1998 for Magneti Marelli Fuel Injected Big Twin, made by Standard Motor Products (OEM 32424-95)
- D. 742016** MAP sensor, fits 1998-2003 XL 1200S, 1999-2009 Softail, 1999-2006 Touring and 1999-2009 Dyna, made by Standard Motor Products (OEM 32316-99)
- D. 239714** MAP sensor, fits 1998-2003 XL 1200S, 1999-2009 Softail, 1999-2006 Touring and 1999-2009 Dyna, S&S (OEM 32316-99)
- D. 760544** MAP sensor, fits 1999-2017 Dyna & Softail, 1999-2007 Touring, 2001-2017 V-Rod and all single plug Sportster 1998-2006, S&S (OEM 32416-10, 32417-10, 32424-98)
- D. 236898** MAP sensor, fits 2007 to present Sportster including XR 1200, 2008-2016 Touring & 2009-2016 Trike, USA (OEM 32319-07A)
- D. 747574** MAP sensor, fits 1999-2017 Dyna & Softail, 1999-2007 Touring, 2001-2017 V-Rod and all single plug Sportster 1998-2006, Cycle Pro (OEM 32416-10, 32417-10, 32424-98)
- D. 747575** MAP sensor, fits 2007 to present Sportster including XR 1200, 2008-2016 Touring and 2009-2016 Trike, Cycle Pro (OEM 32319-07A)
- E. 721999** Engine temperature sensor, fits 1999-2016 Touring, 2009-2016 Trike, 2001-2017 Dyna & 2001-2017 Softail (OEM 32446-99)
- G. 747570** TPS sensor for Magneti Marelli EFI, fits 1995-2001 Touring, Cycle Pro (OEM 27271-95)
- F. 721733** Fuel pressure regulator for Magneti Marelli EFI (OEM 27219-95)
- H. 722161** TPS sensor, fits 2007 to present Sportster, 2001-2005 Softail, and 2002-2005 Touring, Standard Motor Products (OEM 27629-01A)
- H. 747571** TPS sensor, fits 2007 to present Sportster, 2001-2005 Softail, and 2002-2005 Touring, Cycle Pro (OEM 27629-01A)
- I. 701391** TPS sensor, fits 2006-2015 Softail, 2006-2007 Touring and 2006-2017 Dyna with cable operated throttle, Standard Motor Products (OEM 27659-06)
- I. 747572** TPS sensor, fits 2006-2015 Softail, 2006-2007 Touring and 2006-2017 Dyna with cable operated throttle, Cycle Pro (OEM 27659-06)
- 748805** TPS sensor O-ring only, fits 2006-2015 Softail, 2006-2007 Touring and 2006-2017 Dyna with cable operated throttle, 10-pack, Cometec
- J. 747573** TPS sensor, fits 2002-2017 V-Rod, Cycle Pro (OEM 27975-01)

01	HELMETS, LUGGAGE, AUDIO & MORE
02	SEAT
03	EXHAUST
04	ELECTRIC & LIGHT
05	ENGINE ELECTRICS
06	INTAKE
07	ENGINE
08	PRIMARY
09	TRANSMISSION
10	FINAL DRIVE
11	WHEELS & TIRE
12	BRAKE
13	FOOT CONTROL
14	HANDLEBAR
15	FRONT SUSPENSION
16	CHASSIS/FRAME & SHOCKS
17	FENDER & STRUTS
18	GAS TANK & INSTRUMENT
19	OIL TANK, FILTER & LINE
20	FASTENERS
21	MIRROR
22	WINDSHIELD
23	OIL, CHEMICALS & TOOLS
24	TECHTIPS & CROSS REF > ZPN
25	CROSS REF ZPN > PAGE
26	ALPHABETICAL INDEX

NEW

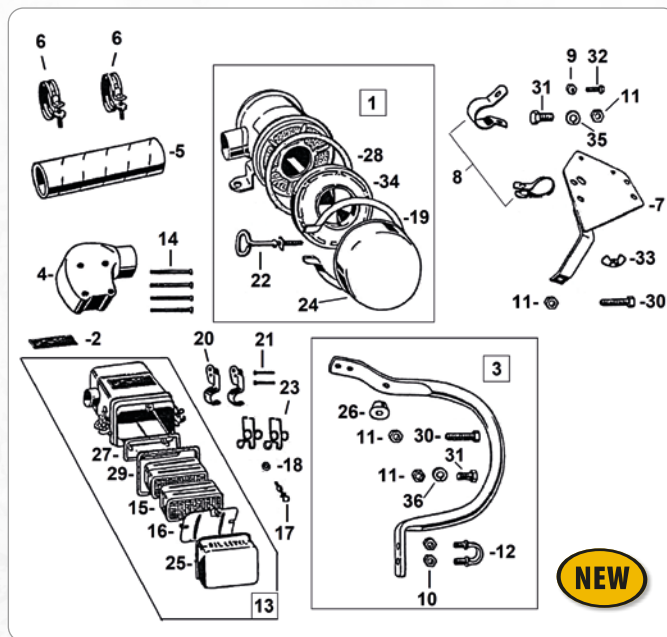


Genuine

MANIFOLD PARTS FOR KNUCKLEHEAD & PANHEAD

Nuts, bushings and nipples for the manifold, also known as inlet pipe for early OHV Big twins. Unless differently indicated all parts are sold each.

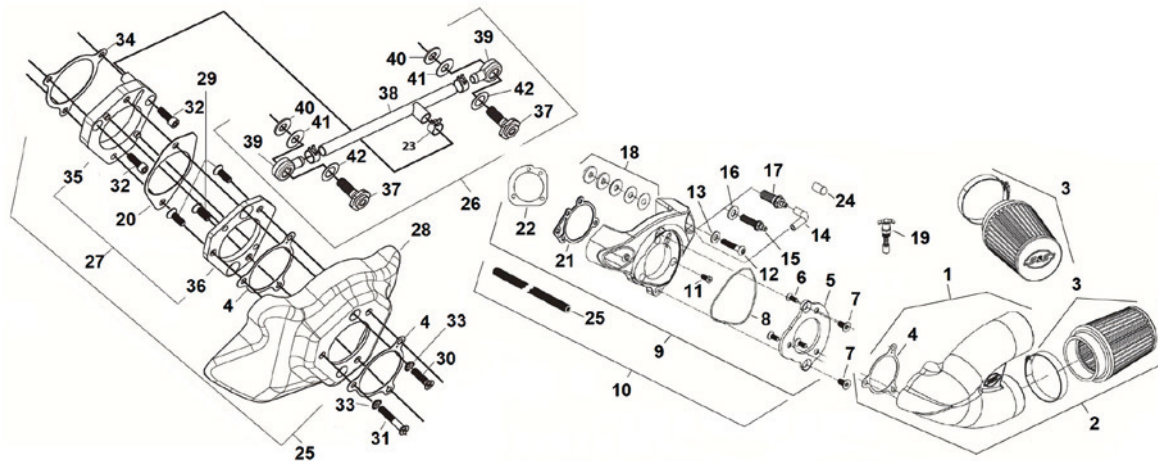
- A. 234558** Gasket, 1940-1957, 10-pack, James (OEM 27411-40)
- A. 700241** Gasket, 1940-1957, 10-pack, Athena (OEM 27411-40)
- B. 712860** Insulator spacer, 1948-1957, .266", V-Twin Mfg.(OEM 27412-48)
- B. 712861** Insulator spacer, 1948-1957, .375", James (OEM 27412-48)
- C. 781331** Manifold nuts 1940-1954, set of two, Colony, chrome (OEM 27052-40)
- C. 781332** Manifold nuts, 1940-1954, set of two, Colony, white plated (OEM 27052-40)
- C. 781333** Manifold nuts, 1940-1954, set of two, Colony, parkerized Park (OEM 27052-40)
- D. 781334** Manifold seals, pure brass, set of two, 1940-1954, Colony (OEM 27059-40)
- E. 781335** Intake manifold nipple with rivet, 1940-1954 (OEM 27039-40, 27039-48)
- E. 788947** Oversized manifold nipple, 1-13/16-20 threaded, 1940-1954
- F. 788948** Intake manifold rivet, 1948-1954, Colony, 10-pack (OEM 27046-48)
- G. 780024** Manifold screws, 1940-1952 OHV Big Twin, all late 1942-1952 Sidevalves, 5/16-18x3/4", parkerized, set of 4 with washers, Colony (OEM 27422-39)
- G. 780025** Manifold screws, 1948-1957 OHV Big Twin, 5/16-18x15/16", parkerized, set of 4 with washers, Colony (OEM 27424-48)



AIR CLEANER PARTS FOR WLA & WLC MODELS

We stock the most wanted items, but parts without a Zodiac part number might be available upon special order, just check out using the OEM part number with your Zodiac sales office. Unless differently indicated all parts are sold each. When you need more than one of an item this is indicated between parenthesis, for example (2).

Pos.	ZPN	Description	OEM
1	782817	Air cleaner, green painted	1404-41M
2	782818	Transfer, HOUDE maintenance instructions	-
3	782952	Guard kit, painted, 1942 WLC (includes 10, 12, 26)	1425-41
4	782819	Connection elbow	1406-41M, 29270-41
5	782950	Connection hose	1411-41M, 29070-41
6	782951	Hose clamp, zinc plated (2)	1413-41M, 29085-41
7	782953	Mounting plate, primer painted	1430-41M, 29087-41
8	782954	Frame clamps, parkerized set of two	1432-41, 1432-41M, 29091-41
9	-	Frame clamp nut	0109, 7695
10	743986	U-bolt nut, 3/8-16, WLC (2), 50-pack	0127, 7793
11	743989	Mounting nut, 7/16-20 (WLA 3, WLC 4), 50-pack	0133, 7835
12	-	U-bolt, WLC	13051-38
13	-	Oil bath air cleaner	1401-42M, 29001-42
14	-	Screw (4)	1409-41M, 29080-41
15	-	Strainer (2)	1414-42, 29094-42
16	-	Baffle plate	1415-42M, 29097-42
17	-	Screw	1416-42, 29098-42
18	-	Washer	1417-42, 29049-42
19	-	Bottom pan clamp	1421-41M, 29109-41
20	-	Oil cup latch (2)	1421-42, 29100-42
21	-	Rivet (2)	1422-42, 29101-42
22	-	Bottom pan clamp screw	1423-41M, 29110-41
23	-	Spring clip (2)	1423-42, 29102-42
24	-	Oil cup, round air cleaner	1425-42M, 29105-42
25	-	Oil cup, rectangular air cleaner	1425-42MA, 29103-42
26	-	Spacer, WLC	1426-41
27	-	Air strainer gasket	1426-42, 29095-42
28	-	Gasket	1429-41M, 29107-41
29	-	Oil cup gasket	1429-42M, 29108-42
30	-	Rear upper bolt	14-30, 16804-30
31	-	Mounting bolt (2)	2807-30, 4620
32	-	Frame clamp bolt	7223-34
33	-	Wing nut	1417-41M
34	-	Baffle plate	1427-41M
35	-	Washer	0255, 7030
36	-	Washer	0266



PARTS FOR S&S SINGLE BORE TUNED INDUCTION SYSTEMS

Except where indicated differently all parts are sold each. When more than one piece of an item is required the quantity is indicated between parenthesis, for example like (2).

Pos.	ZPN	Description	S&S Part#	Pos.	ZPN	Description	S&S Part#
1	789096	Tuned intake runners, natural aluminum	106-4968	18	-	5/16"x1"x.048" shim	50-7040
1	789097	Tuned intake runners, wrinkle black	106-4969	18	-	5/16"x1"x.105" shim	50-7041
1	789242	Tuned intake runners, gloss black	170-0453	18	-	5/16"x1"x.125" shim	50-7042
1	789098	Tuned intake runners, chrome	106-4970	18	795024	Shims, set of 5 as below, XL 1991-up, BT 1993-2017	17-0464
2	740453	Tuned intake runners with filters, wrinkle black	106-4966	18	-	1/2"x1"x.018" shim	50-7085
2	789137	Tuned intake runners with filters, gloss black	170-0454	18	-	1/2"x1"x.030" shim	50-7086
2	740454	Tuned intake runners with filters, chrome	106-4967	18	-	1/2"x1"x.048" shim	50-7087
3	750978	Filter element, red (2)	17-1020	18	-	1/2"x1"x.105" shim	50-7089
3	750979	Filter element, blue (2)	17-1023	18	-	1/2"x1"x.125" shim	50-7090
4	789107	Gasket, intake adapter	17-1022	19	783072	Enrichment device, S&S Super E & G carbs	11-2084
4	795027	Gasket, intake adapter, Throttle-By-Wire models (2)	106-4428	20	795027	Gasket, Throttle-By-Wire models	106-4428
5	789106	Adapter plate	17-1014	21	783062	Gasket, back plate Super E/G, each	106-1724
6	238230	Flat head socket screw, 1/4-20x5/8" (3), 10-pack	50-0433	21	783063	Gasket, back plate Super E/G, 10-pack	106-2328
7	238236	Flat head socket screw, 5/16-18x3/4" (3), 10-pack	50-0432	22	742399	Gasket, Keihin CV or cable operated EFI, 10-pack	106-6022
8	789138	O-ring Viton	50-0446	23	789162	Cap, cannister purge fitting	50-8266-S
9	750893	Bracket kit for S&S X-Wedge	106-4972	24	795026	Vent hose, .313"x.438"x24", cut to size	106-4982
9	751343	Bracket kit for 1986-2003 with Super E or G	106-4975	25	795028	Bracket kit for Throttle-By-Wire models	106-4851
9	795014	Hardware kit only for above	17-5099	26	795029	Breather kit for Throttle-By-Wire models	106-4827
9	795015	Bracket kit for 1991-up Sportster, Keihin CV or EFI	106-6026	27	795030	Spacer & adapter kit, Throttle-By-Wire model	106-4824
9	795016	Hardware kit only for above	500-0018	28	795031	Cover, Throttle-By-Wire models, black	106-3612
10	751508	Bracket kit for stock CV carb or cable EFI, 1984-2017 Big Twin	106-4978	29	238231	Flat head socket screw, 1/4-20x3/4" (3), 10-pack	50-0491
10	795017	Hardware kit only for above	17-5098	30	795032	Flat head socket screw, 1/4-20x1", black chrome	106-4828
10	751345	Bracket kit for Super E or G carb, 1984-1999 Big Twin	106-4974	31	795033	Flat head socket screw, 1/4-20x1 1/2", black chrome	106-4829
10	795014	Hardware kit only for above	17-5099	32	233325	Socket head screw, 14-20x3/4", chrome (2), 10-pack	50-0067
10	795018	Bracket kit for S&S EFI, 1984-1999 Big Twin	106-4977	33	795034	Counter sunk washer, external tooth, 1/4"x1/2"	106-4980
10	795017	Hardware kit only for above	17-5098	34	760549	Gasket, throttle body, James, 10-pack	OEM 29645-08
10	751344	Bracket kit for Super E or G carb, S&S V124 & T124	106-4973	34	760550	Gasket, throttle body, FoaMet, James, 5-pack	OEM 29645-08
10	751347	Bracket kit for S&S EFI, S&S V124 & T124	106-4976	34	795035	Gasket, throttle body, 58mm	160-0050
10	795019	Hardware kit only for above	500-0016	34	795036	Gasket, throttle body, 66mm & 70mm	160-0035
11	789076	Backplate screw, LSHC Black Oxide, X-Wedge	106-0817	35	795037	Spacer, Throttle-By-Wire models	106-4826
11	-	Screw with thread lock, socket head, 1/4-20x1/2"	106-2087	36	795038	Adapter, Throttle-By-Wire models	106-3607
11	789088	Screw with thread lock, socket head, 1/4-20x1/2", 10-pack	106-2105	37	795039	Breather screws, Throttle-By-Wire models (2)	106-2667
12	239912	Button head socket screw, 5/16-18x1 1/2", Grade 5, Chrome, 5-pack	50-0309-S	38	795040	Breather tube, Throttle-By-Wire models	17-0339
13	236070	Washer, 5/16"x1/16"	50-7034	39	795041	Vent tube fittings, pair, Throttle-By-Wire models	17-0355
14	795020	Breather hose, 90 degree	19-0178A	40	795044	Washer, .380"x.813"x.03"	50-7051
15	795022	Screw, breather fitting, 3/8-16x 1 1/4"	50-0436	41	795043	Washer, rubber coated, .380"x.880"x.024" (2), 10-pack	50-7059
16	795025	Washer, flat, 3/8"x13/16"x1/16", chrome	50-7106-S	42	795042	Washer, rubber coated, .520"x.880"x.024" (2), 10-pack	50-7057
17	795021	Screw, breather fitting, 1/2-13x1 1/4"	50-0435	43	795045	Spring clamp, 9/16" (3)	50-8001
18	795023	Shims, set of 5 as below, XL 1986-1990, BT 1984-1999, S&S 4 1/8" bore engines	17-0314	-	-	Filter oil, red, 8oz. (237cc) bottle	106-1163
18	-	5/16"x1"x.018" shim	50-7038	-	733793	Filter oil, red, (227cc) bottle	-
18	-	5/16"x1"x.030" shim	50-7039	-	-	Filter oil, blue, 8oz. (237cc) bottle	106-1164
				-	-	Optional rain sock, each	106-0247
				-	751348	Optional rain socks, pair	106-0248

01	HELMETS, LUGGAGE, AUDIO & MORE
02	SEAT
03	EXHAUST
04	ELECTRIC & LIGHT
05	ENGINE ELECTRICS
06	INTAKE
07	ENGINE
08	PRIMARY
09	TRANSMISSION
10	FINAL DRIVE
11	WHEELS & TIRE
12	BRAKE
13	FOOT CONTROL
14	HANDLEBAR
15	FRONT SUSPENSION
16	CHASSIS/FRAME & SHOCKS
17	FENDER & STRUTS
18	GAS TANK & INSTRUMENT
19	OIL TANK, FILTER & LINE
20	FASTENERS
21	MIRROR
22	WINDSHIELD
23	OIL, CHEMICALS & TOOLS
24	TECHTIPS & CROSS REF > ZPN
25	CROSS REF ZPN > PAGE
26	ALPHABETICAL INDEX



ARLEN NESS ROUGH CRAFTS PERFORMANCE AIR CLEANERS

Air cleaners with Arlen's next generation patented inverted backing plates with hidden breather design combined with Rough Crafts CNC machined style. Intakes come complete with a black pre-oiled High Performance filter element.

Fits all 1988 to present XL Sportster

- ARC600003** Black finned teardrop
- ARC600007** Chrome finned teardrop
- ARC600011** Black finned round
- ARC600015** Chrome finned round

Fits Milwaukee Eight 2017 to present Touring, 2017 to present Trike and 2018 to present Softail

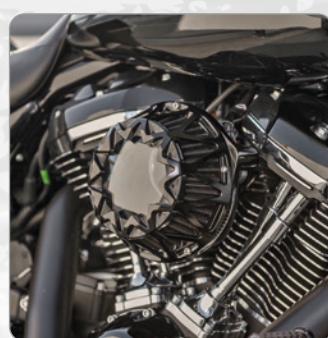
- ARC600000** Black finned teardrop
- ARC600004** Chrome finned teardrop
- ARC600008** Black finned round
- ARC600012** Chrome finned round

Fits Twin Cam 2008-2017 with Trottle-By-Wire Fuel Injection

- ARC600001** Black finned teardrop
- ARC600005** Chrome finned teardrop
- ARC600009** Black finned round
- ARC600013** Chrome finned round

Fits Twin Cam 1999-2017 with CV carburetor or cable controlled Delphi Fuel Injection

- ARC600002** Black finned teardrop
- ARC600006** Chrome finned teardrop
- ARC600010** Black finned round
- ARC600014** Chrome finned round



ARLEN NESS CROSSFIRE PERFORMANCE INTAKES

Air cleaners with Arlen's next generation patented inverted backing plates with hidden breather design and a polycarbonate top. The ergonomic design improves legroom. Intakes come complete with a black pre-oiled High Performance filter element.

Fits all 1988 to present XL Sportster

- A600041** Black with clear accents
- A600045** All black
- A600051** Chrome

Fits Twin Cam 1999-2017 with CV carburetor or cable controlled Delphi Fuel Injection

- A600040** Black with clear accents
- A600044** All black
- A600050** Chrome

Fits Milwaukee Eight 2017 to present Touring, 2017 to present Trike and 2018 to present Softail

- A600038** Black with clear accents
- A600042** All black
- A600048** Chrome

Fits Twin Cam 2008-2017 with Trottle-By-Wire Fuel Injection

- A600039** Black with clear accents
- A600043** All black
- A600049** Chrome



S&S SINGLE BORE TUNED INDUCTION SYSTEM

The S&S single bore tuned induction system is cool looking and delivers a healthy boost in midrange torque. Peak horsepower is also increased. The tuned runner system makes even more horsepower than an S&S teardrop air cleaner. Performance increases are across the board for stock and big inch engines alike. The heart of the single bore tuned induction system is the dual runner, two-into-one intake. The tuned runners are very similar in appearance to the dual runner intake for our dual bore induction system, but the design allows for more flexibility. Instead of bolting directly to a throttle body, the runners of the single bore induction join together in a smooth, flow enhancing curve and the unit bolts to an adapter bracket. A variety of adapter brackets make it compatible with lot of different engine styles. The Single Bore Tuned Induction System is available in chrome, wrinkle black powder coat, or natural finish for customers who want to apply their own cosmetic treatment. Kits for 2008-2016 Touring models are designed to bolt directly to the ETC throttle body without an adapter bracket and include a black cover to hide the throttle body from view. Kits for all other models are actually composed of two kits: one with the induction runners and filter, the other with the adapter bracket, breather and required hardware.

Complete Single Bore Tuned Induction Kits for Twin Cam, fits 2008-2016 Touring, 2009-2016 Trike, 2016-2017 Softail and 2016-2017 FXDLs Low Rider S

- 712019** Chrome
- 711990** Black
- 795063** Brushed Stainless Steel

Adapter Bracket Kits for S&S Single Bore Tuned Induction Systems

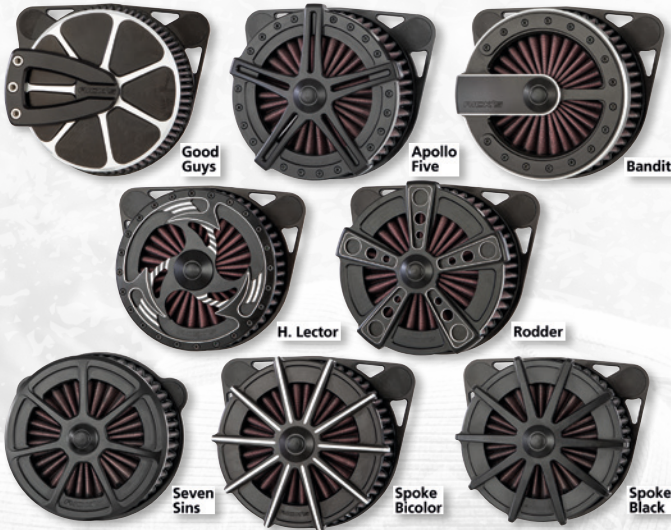
- 751343** Fits 1986-2003 Sportster equipped with S&S Super E or Super G carburetor
- 751508** Fits 1984-1999 Evolution Big Twin and 1999-2017 Twin Cam with stock CV carburetor or cable operated Delphi Fuel Injection
- 751345** Fits 1984 thru 1999 Evolution Big Twin, S&S V and T-series engines from 96 thru 113 CI and 1999 to present Twin Cam equipped with S&S Super E or Super G carburetor
- 751344** Fits S&S V124 and T124 engines with S&S Super E or Super G carburetor
- 751347** Fits S&S V124 and T124 engines with S&S Single Bore Fuel Injection

Parts and accessories

- 751348** Water repellent filter covers, pair
- 750979** Optional blue filter element, each
- 750978** Replacement red filter element, each

Complete Single Bore Tuned Induction kits for Milwaukee Eight, fits 2017 to present Touring, 2017 to present Trike and 2018 to present Softail

- 795061** Chrome
- 795062** Gloss black
- 795060** Brushed Stainless Steel



RICK'S GOOD GUYS DESIGN AIR CLEANERS

Rick's Good Guys design air cleaner is made in Germany and characterized by an elaborate construction and an equally appealing design. Housing and base plate are milled out of billet aluminum CNC and feature an integrated engine ventilation that leads the oil back into the intake passage, preventing uncontrolled oil leakage from the air cleaner body. The air cleaner features integrated noise reduction which is not visible from the outside. The noise reduction can be removed to optimize performance, but note that this will void the TÜV approval. However, the technical appearance is only the visible part of the filter. Thanks to the K&N filter element and clever flow optimization this air cleaner meets the highest requirements. TÜV approval is for the Rick's air cleaner in combination with original exhaust systems and some adjustable aftermarket exhausts.

Fits 2007 to present XL Sportster models

- 757512** Good Guys design, black bicolor
- 757519** Apollo Five design, black
- 757526** Bandit design, black bicolor
- 757533** H.Lector design, black bicolor
- 757540** Rodder design, black bicolor
- 757547** Seven Sins design, black
- 757554** Spoke design, black bicolor
- 757561** Spoke design, black
- 757564** Optional rain sock
- 757565** Replacement K&N filter element

Fits 1993-2000 Evolution Big Twin with stock Keihin CV carburetor, 1999-2006 Twin Cam with stock Keihin CV carburetor, 2002-2015 Softail with stock cable operated Fuel Injection, 2004-2016 Dyna with stock cable operated Fuel Injection & 2002-2007 Touring with stock cable operated Fuel Injection

- 757511** Good Guys design, black bicolor
- 757518** Apollo Five design, black
- 757525** Bandit design, black bicolor
- 757532** H.Lector design, black bicolor
- 757539** Rodder design, black bicolor
- 757546** Seven Sins design, black
- 757553** Spoke design, black bicolor
- 757560** Spoke design, black
- 757564** Optional rain sock
- 757565** Replacement K&N filter element

Fits 2016-2017 110CI Softail

- 757508** Good Guys design, black bicolor
- 757515** Apollo Five design, black
- 757522** Bandit design, black bicolor
- 757529** H.Lector design, black bicolor
- 757536** Rodder design, black bicolor
- 757543** Seven Sins design, black
- 757550** Spoke design, black bicolor
- 757557** Spoke design, black
- 757564** Optional rain sock
- 757565** Replacement K&N filter element

Fits 2008-2016 Touring and 2016-2017 96CI & 103CI Softail

- 757513** Good Guys design, black bicolor
- 757520** Apollo Five design, black
- 757527** Bandit design, black bicolor
- 757534** H.Lector design, black bicolor
- 757541** Rodder design, black bicolor
- 757548** Seven Sins design, black
- 757555** Spoke design, black bicolor
- 757562** Spoke design, black
- 757564** Optional rain sock
- 757565** Replacement K&N filter element

Fits 2017 to present Milwaukee Eight Touring

- 757514** Good Guys design, black bicolor
- 757521** Apollo Five design, black
- 757528** Bandit design, black bicolor
- 757535** H.Lector design, black bicolor
- 757542** Rodder design, black bicolor
- 757549** Seven Sins design, black
- 757556** Spoke design, black bicolor
- 757563** Spoke design, black
- 757564** Optional rain sock
- 757565** Replacement K&N filter element

Fits 2018 to present 107CI Milwaukee Eight Softail

- 757509** Good Guys design, black bicolor
- 757516** Apollo Five design, black
- 757523** Bandit design, black bicolor
- 757530** H.Lector design, black bicolor
- 757537** Rodder design, black bicolor
- 757544** Seven Sins design, black
- 757551** Spoke design, black bicolor
- 757558** Spoke design, black
- 757564** Optional rain sock
- 757565** Replacement K&N filter element

Fits 2018 to present 114CI Milwaukee Eight Softail

- 757510** Good Guys design, black bicolor
- 757517** Apollo Five design, black
- 757524** Bandit design, black bicolor
- 757531** H.Lector design, black bicolor
- 757538** Rodder design, black bicolor
- 757545** Seven Sins design, black
- 757552** Spoke design, black bicolor
- 757559** Spoke design, black
- 757564** Optional rain sock
- 757565** Replacement K&N filter element

01	HELMETS, LUGGAGE, AUDIO & MORE
02	SEAT
03	EXHAUST
04	ELECTRIC & LIGHT
05	ENGINE ELECTRICS
06	INTAKE
07	ENGINE
08	PRIMARY
09	TRANSMISSION
10	FINAL DRIVE
11	WHEELS & TIRE
12	BRAKE
13	FOOT CONTROL
14	HANDLEBAR
15	FRONT SUSPENSION
16	CHASSIS/FRAME & SHOCKS
17	FENDER & STRUTS
18	GAS TANK & INSTRUMENT
19	OIL TANK, FILTER & LINE
20	FASTENERS
21	MIRROR
22	WINDSHIELD
23	OIL, CHEMICALS & TOOLS
24	TECHTIPS & CROSS REF > ZPN
25	CROSS REF ZPN > PAGE
26	ALPHABETICAL INDEX



752159 Chrome Domed Bobber billet air cleaner cover
752160 Wrinkle black Domed Bobber billet air cleaner cover



760510 Tri-Spoke air cleaner cover



760511 Torker air cleaner cover



760512 Air-One air cleaner cover



S&S STEALTH AIR CLEANERS

Everybody likes to go fast, but not everybody likes to advertise. The S&S Stealth air cleaner kits are for the rider who likes to go fast, but wants to be just a little bit sneaky. Get all the performance of the S&S design, including the air directional "stinger" cone in the filter, and hide it under your stock Harley-Davidson air cleaner cover. The new S&S Stealth air cleaner kit can be installed on Twin Cams and Milwaukee Eights and pick up more power, using their stock air cleaner cover. Nobody will know because it looks entirely stock. We're talking sleeper hog! All 1993 thru 1999 Evolution Big Twins and 1991 to present Sportster models can get the same performance kick, but won't be able to use their stock covers. Of course, there are always those who figure if you got it, you ought to flaunt it. For those riders, we offer a line of stylish S&S air cleaner covers to go with the new Stealth air cleaners. The Airstream cover was designed as an update of the same classic S&S teardrop with the advantage of offering increased air flow. However, it is not the only cover option for the Stealth, as S&S is also offering several minimalistic billet covers in a choice of Wrinkle black or chrome that leave the air filter element and back plate exposed for a high performance don't mess with me look and a performance boost as well. One of the covers, the 'Muscle' uses miniature hood pins similar to those that held the hoods down on the muscle cars of the late Sixties and early Seventies, hence the design's name. The Stealth air cleaner is designed with the back plate as a bolt-on part with minimal fasteners and assembly required. No shims to worry about, no breather lines to hassle with and internal hardware that is locked in place so that it can't come loose and be ingested into the motor. Because S&S designed the stinger section of the air filter to be a separate piece from the element, it makes the filter replacement much more affordable when the need comes to change it. The element is washable though, and should normally never need to be replaced unless it is damaged. We suggest die-hards who do longer trips in the rain to also order a rain cover.

Note: S&S Stealth air cleaner kits may fit other covers using a 5/16" central mounting bolt.

S&S Super Stock Stealth performance intake kits

782469 Adapter only to fit ZPN782468 with a stock air cleaner cover on 2017 to present Touring & Trike



Optional air cleaner covers

752163 Stealth Air Stream air cleaner cover, chrome
788986 Stealth Air Stream air cleaner cover, black



752157 Chrome Dished Bobber billet air cleaner cover
752158 Wrinkle black Dished Bobber billet air cleaner cover



782616 Chrome Mini Teardrop air cleaner cover



782615 Black Mini Teardrop air cleaner cover



782754 Carbon fiber Teardrop air cleaner cover



795052

Replacement Filter element

- 752164** Standard replacement filter element
752165 High Flow filter kit with 2 pcs. stand-offs, 1" (2.5cm) taller
795052 Filter element for use with AirStinger ring or AirStinger teardrop cover



788998 Chrome Tribute air cleaner cover



788999 Black Tribute air cleaner cover



- 795050** Black open teardrop style cover for use with AirStinger filter element
795051 Chrome open teardrop style cover for use with AirStinger filter element
795053 Ring to install AirStinger filter element without a cover



795066



795067

Optional rain covers

- 760422** Fits with standard filter element
760423 Fits with ZPN752165 High Flow filter element
795066 Fits with AirStinger teardrop style cover
795067 Fits with open AirStinger filter element

Kit without cover	Kit with chrome Mini Teardrop cover	Kit with black Mini Teardrop cover
-	782627	782628
782613	782625	782626
752156	782629	782630
788987	782621	782622
752153	782631	782632
752150	-	-
752154	-	-
752151	782623	782624
752155	-	-
752152	782619	782620
782468	-	-
782470	-	-
-	782617	782618
782383	-	-
782384	-	-

- Fits 2015 to present XG500 & XG750 Street, except Street Rod
 Fits 2017 to present XG750A Street Rod
 Fits 1991 thru 2003 Sportster with S&S Super E or G carburetor
 Fits 2007 to present XL Sportster with stock EFI
 Fits 1991 thru 2006 Sportster with stock CV carburetor
 Fits 1993 thru 1999 Evolution Big Twin with stock CV carburetor
 Fits 1993 thru 1999 Evolution Big Twin with S&S Super E or G carburetor
 Fits 1999 thru 2017 Twin Cam with carburetor or cable throttle EFI, except Marelli EFI
 Fits 1999 thru 2006 Twin Cam with S&S Super E or G carburetor
 Fits 2008 thru 2017 Twin Cam with throttle by wire EFI
 Fits with S&S cover on 2017 to present Touring and 2018 to present Softail, except CVO and Trikes
 Fits with OEM cover on 2017 to present Touring, except CVO and Trikes
 Fits 2017 to present Touring and 2018 to present Softail, except CVO and trikes
 Fits S&S T111 engines for 2007 thru 2016 Touring with S&S 58mm throttle body
 Fits S&S T111 engines for 2007 thru 2016 Touring with S&S 66mm throttle body

- 01 HELMETS, LUGGAGE, AUDIO & MORE
 02 SEAT
 03 EXHAUST
 04 ELECTRIC & LIGHT
 05 ENGINE ELECTRICS
 06 INTAKE
 07 ENGINE
 08 PRIMARY
 09 TRANSMISSION
 10 FINAL DRIVE
 11 WHEELS & TIRE
 12 BRAKE
 13 FOOT CONTROL
 14 HANDLEBAR
 15 FRONT SUSPENSION
 16 CHASSIS/FRAME & SHOCKS
 17 FENDER & STRUTS
 18 GAS TANK & INSTRUMENT
 19 OIL TANK, FILTER & LINE
 20 FASTENERS
 21 MIRROR
 22 WINDSHIELD
 23 OIL, CHEMICALS & TOOLS
 24 TECHTIPS & CROSS REF > ZPN
 25 CROSS REF ZPN > PAGE
 26 ALPHABETICAL INDEX



K&N AIR CHARGER PERFORMANCE INTAKE KITS

K&N's AirCharger Performance Intake Kit will get more horsepower from your Harley-Davidson motorcycle. K&N claims to have gained 9 HP on a 1200 Sportster, 10 HP on Softails and Dyna, and an amazing 12.92 HP on a Touring model at the rear wheel. This High-Flow Intake System increases power by eliminating the restrictive stock OE air cleaner and replacing it with a K&N High-Flow Air Filter and mandrel bent aluminum intake tube. This complete intake system will help relieve the labored feeling associated with two-up riding or loaded touring. K&N's High-Flow Intake System gives an aggressive appearance while providing a significant increase in airflow resulting in more power. Kit comes complete with a billet aluminum throttle-body mounting plate, mounting hardware, your choice of a intake tube and a tapered K&N air filter. AirChargers for Sportster and Touring come with a chrome plated breather assembly. AirChargers for Softail and Dyna come with a billet aluminum breather assembly. A DryCharger sock for increased protection from the elements is available separately.

Fits 1991 to present Sportster

- 733808** Optional rain sock for standard DryCharger
- 733814** Replacement filter element for standard AirCharger with chrome end cap
- 733807** Complete black AirCharger kit with chrome breather assembly
- 733923** Complete polished AirCharger kit with chrome breather assembly
- 733922** Replacement filter element for standard AirCharger with black end cap

Fits Throttle-By-Wire Fuel injected 2008-2016 Touring, 2009-2016 Trike, 2011-2017 Softail and 2016-2017 FXDLS Dyna Low Rider S. Shorty kits do not interfere with fairing lowers on Touring models

- 733803** Complete black standard AirCharger kit
- 733804** Complete polished standard AirCharger kit
- 733917** Complete black DeLuxe AirCharger kit with highlighted K&N logo and fins
- 733858** Complete raw cast aluminum DeLuxe AirCharger kit with highlighted K&N logo and fins
- 733908** Complete black Shorty AirCharger kit
- 733910** Polished Complete polished Shorty AirCharger kit
- 733909** Replacement filter element for Shorty AirCharger with black end cap

- 733814** Replacement filter element for standard AirCharger with chrome end cap
- 733857** Replacement filter element for DeLuxe AirCharger with black end cap
- 733808** Optional rain sock for standard DryCharger
- 733856** Optional rain sock for DeLuxe DryCharger
- 733922** Replacement filter element for standard AirCharger with black end cap
- 733866** Replacement filter element for DeLuxe AirCharger with chrome end cap
- 733924** Optional rain sock for Shorty AirCharger

Fits CV carburetor or cable controlled Delphi Fuel Injection equipped 2000-2015 Softail, 1999-2017 Dyna and 1999-2007 Touring

- 733805** Complete black standard AirCharger kit
- 733806** Complete polished standard AirCharger kit
- 733854** Complete black DeLuxe AirCharger kit with highlighted K&N logo and fins
- 733857** Replacement filter element for DeLuxe AirCharger with black end cap
- 733856** Optional rain sock for DeLuxe DryCharger
- 733814** Replacement filter element for standard AirCharger with chrome end cap
- 733808** Optional rain sock for standard DryCharger
- 733922** Replacement filter element for standard AirCharger with black end cap
- 733866** Replacement filter element for DeLuxe AirCharger with chrome end cap

Fits 2017 to present Milwaukee Eight Touring, 2017 to present Milwaukee Eight Trike and 2018 to present Milwaukee Eight Softail

- 733918** Complete black standard AirCharger kit
- 733919** Complete black DeLuxe AirCharger kit with highlighted K&N logo and fins
- 733922** Replacement filter element for standard AirCharger with black end cap
- 733814** Replacement filter element for standard AirCharger with chrome end cap
- 733808** Optional rain sock for standard DryCharger
- 733856** Optional rain sock for DeLuxe DryCharger



IDLE AIR CONTROL MOTORS FOR DELPHI FUEL INJECTION

Stock replacement idle air control motors for models equipped with Delphi fuel injection.

- 760415** S&S, fits 2002-2014 V-Rod, 2001-2005 Softail, 2002-2005 FLH/FLT series (OEM 27628-01)
- 760429** Standard Motor Products, fits 2002 to present V-Rod, 2001-2005 Softail, 2002-2005 FLH/FLT series (OEM 27628-01)

- 701390** Standard Motor Products, fits 2006-2015 88, 96 & 103CI Softail, 2006-2017 88, 96 & 103CI Dyna and 2006-2007 Touring (OEM 27658-06)
- 747576** Cycle Pro, fits 2006-2015 88, 96 & 103CI Softail, 2006-2017 88, 96 & 103CI Dyna and 2006-2007 Touring (OEM 27658-06)



K&N STREET METAL AIR CLEANER FOR MILWAUKEE EIGHT

High-performance air intake housing with built-in breathers, integrated internal velocity stack and K&N washable and reusable oversized High-Flow air filter element.

Fits 2017 to present Touring, 2017 to present Trike and 2018 to present Softail

- 733863** Complete kit, black with chrome accents
- 733864** Complete kit, chrome



Replacement parts

- 733865** K&N filter element only for Street Metal air cleaner



CV-STYLE AIR CLEANER TO S&S SUPER E ADAPTER

Billet aluminum adapter plate that allows to install any air cleaner designed for use with the stock Harley Keihin Constant Vacuum carburetor or cable operated Delphi fuel injection on a S&S Super E carburetor.

- 121013** Chrome CV to Super E adapter plate
- 121014** Black CV to Super E adapter plate



Note: 2007 thru 2015 European Softail models, 2007 thru 2016 European Dyna models and 2007 European Touring models are equipped with an Active Intake Sensor that must be removed when installing an aftermarket air cleaner. When you install a ZPN 702022 "Trick-Box", which is a plug-in module for the stock wiring harness, you avoid a warning light coming on at your dash.

