



Primary Housing & Covers 08-078

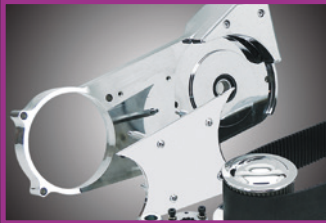


Derby & Inspection Covers 08-079



Motor Sprocket 08-079

# 08



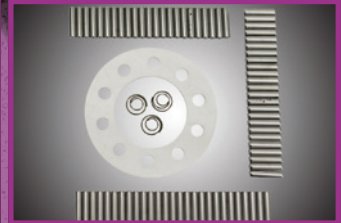
Belt Drives 08-082



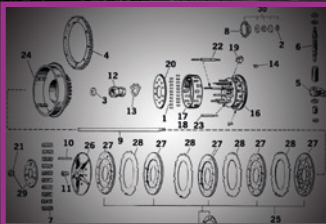
Primo Belt Drives 08-079



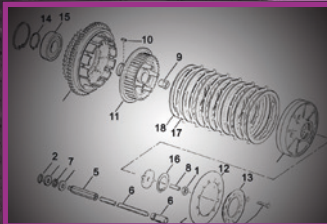
BDL Belt Drives 08-082



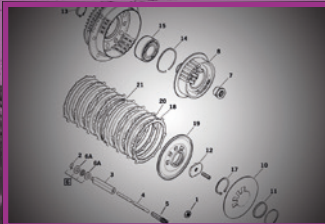
1938-1973 45CI  
(W & G Models) Clutch 08-080



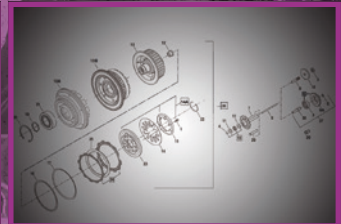
Big-Twin 4 Speed  
& Early 5 Speed Clutch 08-083



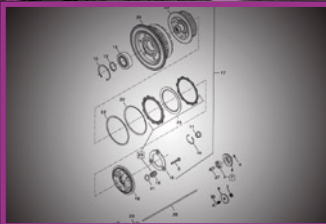
Late 1984-1989 Big Twin  
5-Speed Clutch 08-085



1990-1997 Big Twin Clutch 08-083



1998-2000 Evolution Big Twin & 1999-2017  
Twin Cam Standard 6-Stud Clutch 08-084



2013-2017 Twin Cam & 2017 To Present Milwaukee  
Eight 3-Stud "Assist & Slip" Clutch 08-084

01  
HELMETS,  
LUGGAGE,  
AUDIO & MORE

02  
SEAT

03  
EXHAUST

04  
ELECTRIC  
& LIGHT

05  
ENGINE  
ELECTRICS

06  
INTAKE

07  
ENGINE

08  
PRIMARY

09  
TRANSMISSION

10  
FINAL DRIVE

11  
WHEELS &  
TIRE

12  
BRAKE

13  
FOOT  
CONTROL

14  
HANDLEBAR

15  
FRONT  
SUSPENSION

16  
CHASSIS/  
FRAME  
& SHOCKS

17  
FENDER  
& STRUTS

18  
GAS TANK &  
INSTRUMENT

19  
OIL TANK, FILTER  
& LINE

20  
FASTENERS

21  
MIRROR

22  
WINDSHIELD

23  
OIL, CHEMICALS  
& TOOLS

24  
TECHTIPS &  
CROSS REF  
> ZPN

25  
CROSS REF  
ZPN > PAGE

26  
ALPHABETICAL  
INDEX

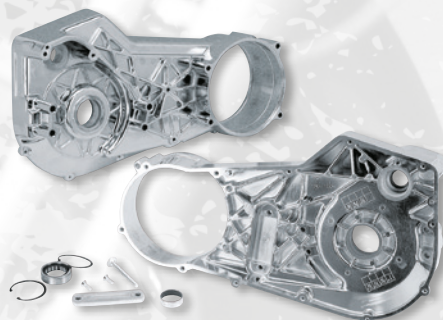


**Colony**

## COLONY INNER PRIMARY MOUNTING KITS

These complete inner primary mounting kits contain reproduction of the original Harley hardware used to mount the inner primary cover. Available for 1936-1954, 1955-1964, 1965-1969, 1970-1979 & 1980-1985 Big Twins.

- 741835** Fits steel inner primary of 1936 thru 1954 Big Twin models
- 741836** Fits steel inner primary of 1955 thru 1964 Big Twin models
- 741837** Fits cast aluminum inner primary of 1965 thru 1969 Big Twin models
- 741850** Fits cast aluminum inner primary of 1970 thru 1979 Big Twin models
- 741851** Fits cast aluminum inner primary of 1980 thru 1985 Big Twin models
- 742344** Fits the aluminum primary of 1986-2000 Touring and 1986-2000 FXR
- 742318** Fits the aluminum primary of 1986-1993 Softail and 1991-1993 Dyna
- 742319** Fits the aluminum primary of 1994-1999 Softail and 1994-1998 Dyna
- 742343** Fits the aluminum primary of 2000-2006 Softail, 1999-2005 Dyna and 2001-2006 Touring



## OFF-SET INNER PRIMARY COVER FOR SOFTAIL MODELS

These primaries eliminate the use of spacers and spacer rings to off set the primary when a your Softail is converted to accept a wide tire kit. The engine to primary spacer as well as the transmission to primary spacers are an integrated part of these trick primaries. The elimination of the spacers creates a more rigid primary and provides a much cleaner look. Primaries are available in two off-sets 1" (25.4mm), and 1 1/2" (38mm) offset. They also have the same reinforcement features our other inner primaries have and can be used in combination with High performance engines. The reinforcement ribs prevent the cover from cracking in the bearing area under the loads that are common with today's Stroker and Big Cubic Inch engines. Covers have a beautiful chrome plated finish for that custom appeal and are available for Softail models from 1990 thru 2006. Seals, bearings, bushings, lock tabs and other hardware must be ordered separately. Looks even better when fitted in combination with our chrome outer primary cover ZPN210082.

**Note:** These inners must be used with extended shafts, found elsewhere in this catalog.

## Fits 1990 thru 1993 Softail models

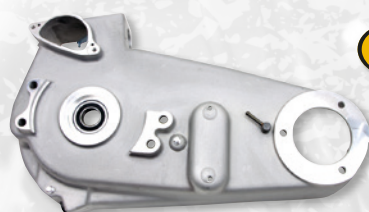
**210155** 1 1/2" (38mm) offset

## Fits 1994 thru 2006 Softail models

**210163** 1" (25.4mm) offset

## Replacement parts

- 292216** Lock tab, Zodiac, each (OEM 33318-85)
- 231172** Main shaft seal 1984 to present, James (OEM 12052)
- 231173** Starter shaft seal 1989 thru 1993 (OEM 12053)
- 700470** Starter shaft seal 1994 thru 2006 (OEM 12066)
- 233823** Transmission main shaft support bearing (OEM 9135)
- 231480** Bearing retaining ring (2), 10-pack (OEM 60678-85)
- 231478** Starter motor bushing 1990 thru 1993 (OEM 33445-89)
- 231479** Starter motor bushing 1994 thru 2006 (OEM 33445-94A)
- 231680** Bearing retaining ring (2), (OEM 60678-85)



**NEW**



## INNER PRIMARY FOR 1965-1969 BIG TWIN

Replica inner primary cover features a natural cast aluminum finish and includes the transmission mainshaft bearing and adjuster detent plate. Cast is slightly larger than the die cast replacements. Installer can mill or polish down the edge of inner for a perfect match.

**769090** Inner primary 1965-1969 Big Twin (OEM 60617-65A)



## OUTER PRIMARY COVER FOR 1965 PANHEAD & 1966-1984 SHOVELHEAD

This is the 1970-1984 design outer primary cover ready to retrofit on 1965-1969 FL & FLH Big Twins. It features a partially drilled 9th hole that must be drilled through to fit 1970-1984 FL 4-speed models. Primary accepts 1970-1998 style 3-hole derby cover, inspection cover and hardware.

**789926** Clear lacquered outer primary cover to replace OEM 60508-65 & 60508-70

## Optional parts

**233169** Chrome primary, inspection and derby cover screw kit



## 2006 TO PRESENT INNER PRIMARY BOLTS

Set of five 5/16-18x2" Grade 5 hex serrated bolts with seal washers and thread locker to install the inner primary on 2006-2017 Dyna, 2007 to present Softail. 2017 to present Touring and 2017 to present Trike.

**022205** Inner primary bolts, set of five (OEM 786A)



**2 YEARS WARRANTY**

## NARROW PROFILE PRIMARY COVER FOR 2007-2016 TOURING

The Narrow Profile primary cover is standard equipment on 2015-2016 FLHTCUL Electra Glide Ultra Classic & FLHTKL Ultra Limited Low models and approx. 1" narrower than the stock cover on other 2007-2016 Touring and Trike models. It allows easier reach to the ground and is shaped to slim the bikes profile on the left. Installation requires the separate purchase of primary gasket kit and 2015 and later style derby cover.

**210232** Chrome narrow primary cover, Genuine Zodiac (OEM 25700385)

**782175** Chrome narrow primary cover, V-Twin Mfg. (OEM 25700385)

**302904** Chrome narrow derby cover, 2015-style, Genuine Zodiac (OEM 25700388)

**210233** Satin black narrow primary cover, Genuine Zodiac (OEM 25700438)

**782176** Satin black narrow primary cover, V-Twin Mfg. (OEM 25700438)

**302905** Satin black narrow derby cover, 2015-style, Genuine Zodiac (OEM 25700437)

**742506** Primary gasket kit, Genuine James

**748820** Primary gasket kit, Comet





### INNER PRIMARY BEARING AND BEARING RACES FOR 1984 TO PRESENT BIG-TWINS

Transmission main shaft support bearing and inner races. Outer bearing fits all models with roller bearing from 1984 to present. Inner race is available in standard (inch) size for the 1984 thru early 1985 models, metric size for the late 1985 thru 2006 5-speed models, as well as metric size for the 2006 to present 6-speed Dyna and 2007 to present Softail and FLH series models. Bearing and inner race are sold separately.

- A. 234354** Inner race 1984 thru early 1985 Big-Twin models (OEM 34090-84)
- B. 234373** Inner race, fits late 1985-2000 Evolution Big Twin and 1999-2006 5-speed Twin Cam, V-Twin Mfg. (OEM 34091-85)
- C. 723106** Inner race, fits 2006 thru 2007 6-speed Dyna and 2007 Softail and FLH series models (OEM 34091-06)
- D. 723107** Inner race, fits 2008 to present Twin Cam and Milwaukee Eight (OEM 34091-08)
- E. 233823** Bearing, fits 1984 thru 2006 5-speed Big-Twin models (OEM 9135)
- F. 231778** Bearing fits 2006 to present 6-speed Twin Cam & Milwaukee Eight (OEM 9231)



### NARROW PROFILE DERBY COVER FOR 2007 TO PRESENT TOURING

The 5-hole Narrow Profile derby cover is standard equipment on 2015 FLHTCUL Electra Glide Ultra Classic & FLHTKL Ultra Limited Low models and all 2016 to present Touring & Trike models. Also fits all 2007-2015 Touring & Trike models equipped with a Low Profile primary cover.

**302904** Chrome narrow derby cover (OEM 25700388)

**302905** Satin black narrow derby cover (OEM 25700437)



### C-THRU DERBY COVERS

From Germany we bring you these "C-thru" billet aluminum Derby covers. Rick's designed and manufactures these covers with a leak-proof fitting of the window. Window is of course oil resistant.

**Fits all 1970-1984 Shovelhead and all 1984-1998 Evolution Big Twin**  
**741187** 3 Hole cover, polished

**Fits 1999-2017 Dyna, 1999-2017 Softail, and 1999-2015 Touring & Trike, except 2015 FLHTCUL Ultra Classic Low, 2015 FLHTKL Ultra Limited Low and other models equipped with the OEM Accessory Narrow Profile Outer Primary Cover**

**741188** 5 Hole cover, polished

**Fits all 2018 to present Milwaukee Eight Softail**

**757420** 5 Hole cover, polished

**757421** 5 Hole cover, gloss black

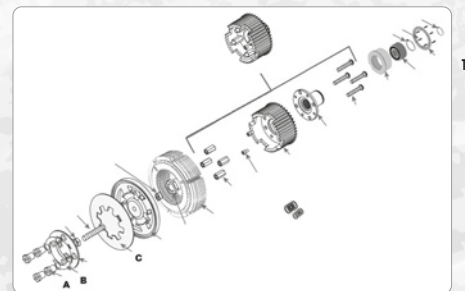
**757422** 5 Hole cover, wrinkle black



### IMPROVED COMPENSATOR SPROCKET KIT FOR MILWAUKEE EIGHT

The weakest point of the compensator sprocket as used on 2017 to present Touring, 2017 to present Trike and 2018 to present Softail is the thrust washer used between the sprocket retainer and the chain sprocket. This one uses a strong and reliable thrust bearing for increased mileage.

**241336** Premium compensator sprocket kit, replaces OEM 40100076



### PRIMO BELT DRIVE CLUTCH & PRO-CLUTCH REPLACEMENT PARTS

Pro Clutches are also used in many Primo Belt Drives. Apart from friction and drive discs, these are the most common replacement parts. Your Pro Clutch or Primo Belt drive is supplied with an exploded view with part numbers, reason why we also list Primo part numbers. For reference we pictured the Pro-Clutch for 4-Speed Big Twins, ZPN701151.

#### A. Spring retainer nuts

**Sold each**

**232165** Nut, .825" long, 11/16" wrench size (Primo 1057-0110)

**761003** Nut, .800" long, 11/16" wrench size (Primo 2057-0022)

#### B.

**761004** Tab washer (Primo 1058-0106)

#### C. Diaphragm clutch springs

**All Pro Clutches and Primo Belt Drives that were supplied with a clutch use the same diaphragm spring.**

**761015** Easy-on-the-hand spring, for stock motors only, black (Primo 2059-0001)

**761016** Diaphragm spring, silver +15% (Primo 2059-0003)

**761017** Extra Heavy Duty, 40% stronger than stock, for competition use only



### PRIMARY SHIFTER SHAFT BUSHING

Used on many models from 1983 through 2017, some models have just one, some use two.

**789455** Shifter shaft bushing, each (OEM 33713-83, 42642-00A)



### INNER PRIMARY DOWEL PINS

Used on almost any model from 1975 to present.

**789476** Dowel pin, 10-pack (OEM 24754-75A)

01  
HELMETS,  
LUGGAGE,  
AUDIO & MORE

02  
SEAT

03  
EXHAUST

04  
ELECTRIC  
& LIGHT

05  
ENGINE  
ELECTRICS

06  
INTAKE

07  
ENGINE

08  
PRIMARY

09  
TRANSMISSION

10  
FINAL DRIVE

11  
WHEELS &  
TIRE

12  
BRAKE

13  
FOOT  
CONTROL

14  
HANDLEBAR

15  
FRONT  
SUSPENSION

16  
CHASSIS/  
FRAME  
& SHOCKS

17  
FENDER  
& STRUTS

18  
GAS TANK &  
INSTRUMENT

19  
OIL TANK, FILTER  
& LINE

20  
FASTENERS

21  
MIRROR

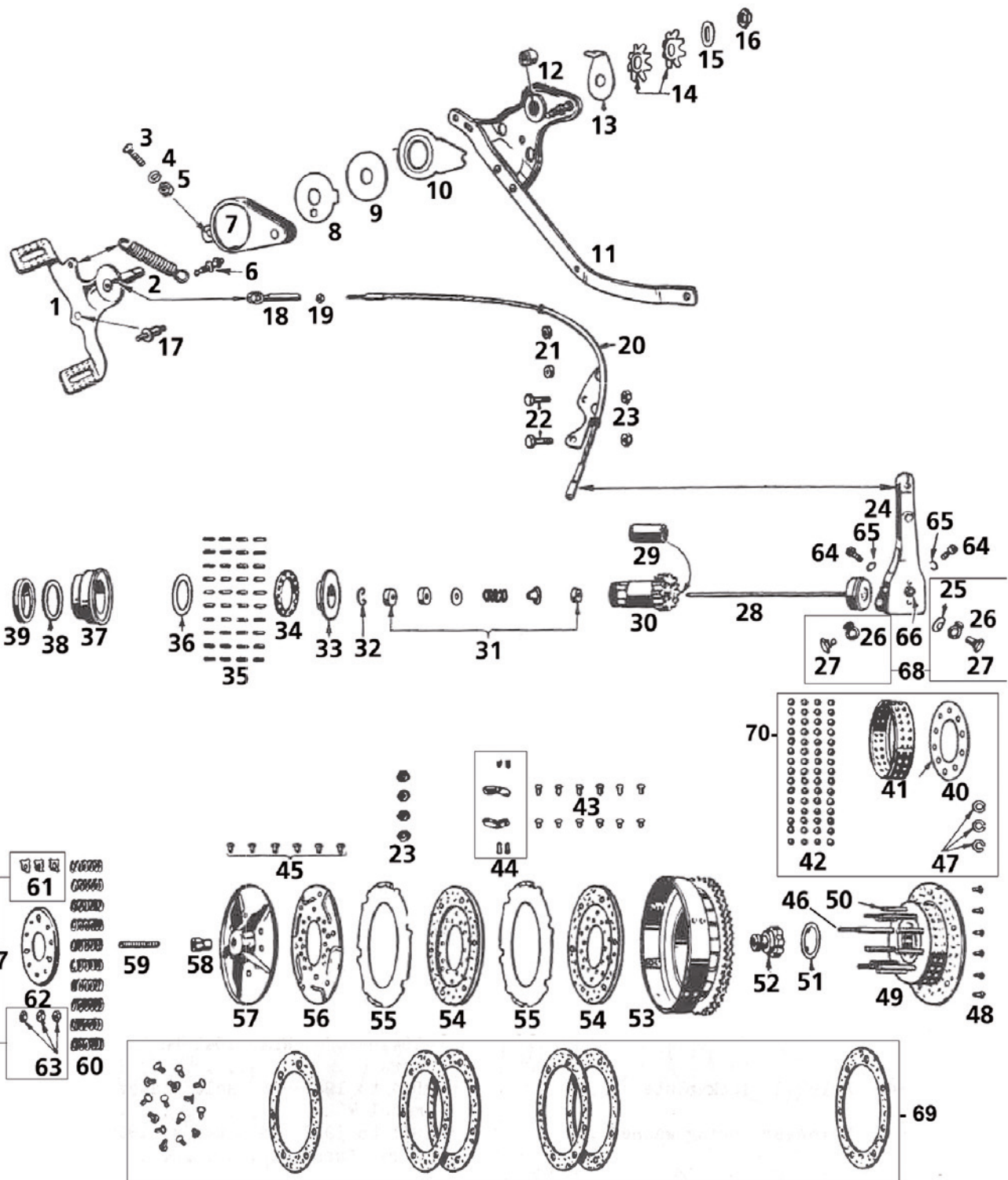
22  
WINDSHIELD

23  
OIL, CHEMICALS  
& TOOLS

24  
TECHTIPS &  
CROSS REF  
> ZPN

25  
CROSS REF  
ZPN > PAGE

26  
ALPHABETICAL  
INDEX



**CLUTCH PARTS FOR 45CI MODELS**

Please check with your Zodiac sales office for parts without a Zodiac part number as these may be available upon Special Order

Pos.	ZPN	Description	OEM
1	239450	Lever, 1938-1952 Solo & 1938-1946 ServiCar	36812-38
2	239451	Spring, black	36880-36
2	239452	Spring, chrome	36880-36
3	-	Screw	2762
4	-	Washer	7035
5	-	Nut	7691
6	-	Stud	36871-40
7	760049	Cover	36832-38
8	760050	Disc	36901-36
9	760051	Disc	36897-36
10	760052	Disc	36895-36
11	-	Sidebar	50543-38

Pos.	ZPN	Description	OEM
12	-	Bushing	36857-36
13	<b>760053</b>	Washer	36908-36
14	<b>760054</b>	Lever friction spring washer, set of 2	36906-36
15	<b>780091</b>	Washer	36909-36
16	<b>760048</b>	Nut, 5/8"-24x7/32"x7/8" hex, NEF	7984
17	-	Stud	36888-38
18	-	Clutch lever rod end	36916-36
19	-	Nut, 1941-up	7634
20	<b>780005</b>	Clutch release cable, complete with #18 & #19, black	36975-41
21	-	Washer, 1941-up	36983-41
22	-	Bolt, 1941-up	4000
23	-	Nut	7752
24	<b>239454</b>	Lever, 1941-1943 WL, 1941-1973 ServiCar	37052-41
24	<b>239455</b>	Lever, 1944-1952 WL, late 1942-up WLA	37052-44
25	-	Washer, 1941-1942 WL, 1941-1973 G	37084-41
26	-	Plate, 1942-up WLA, 1944-1952 WL	37081-44
27	<b>780280</b>	Screw, 1941-1943 WL, 1941-1973 ServiCar, set of 2	37076-41
27	<b>780281</b>	Screw, late 1942-up WLA, 1944-1952 WL, set of 2	37077-44
28	<b>235137</b>	Throwout bearing assembly, 1941-up, Eastern	37287-41
28	<b>782935</b>	Throwout bearing assembly, 1941-up, Samwel	37287-41
29	-	Bushing, 1941-up	37458-41
30	-	Gear, 1941-up	37450-41
31	-	Fittings, set, 1941-up	37335-41
32	-	Ring, 1941-up	37354-41
33	-	Race, 1941-up	37477-41
34	-	Bearing, 1941-up	37467-41
35	<b>234638</b>	Rollers, standard size, pack of 88	9084
	<b>234639</b>	Rollers, +.0004", pack of 88	9085
	<b>234640</b>	Rollers, +.0008", pack of 88	9086
	<b>234641</b>	Rollers, +.001", pack of 88	-
36	-	Washer, 1941-up	37482-41
37	-	Race, 1941-up	37474-41
38	-	Washer, 1941-up	37480-41
39	<b>700326</b>	Oil seal, 1941-up, pack of 5	37465-41
40	<b>780077</b>	Plate, 1941-up	37577-41
41	<b>780078</b>	Retainer, 1941-up	37568-41
42	<b>780079</b>	Ball, set of 60, 1941-up	8856
43	-	Rivet	8232
44	-	Buffer set, 1941-up	38025-41
45	-	Rivet, 1941-up	8226
46	-	Stud, 1941-up	37584-41
47	<b>144179</b>	Stud spring, dealer 10-pack	37312-38, 37574-44
48	-	Rivet, 1941-up	8227
49	<b>755000</b>	Hub assembly, 1941-up	37551-41
50	<b>239453</b>	Pin, 1941-up	37586-41
51	<b>780096</b>	Lock washer, 1941-up, dealer 10-pack	37462-41
52	<b>239463</b>	Clutch gear nut with washer #51, 1941-up, Colony	37460-41
53	-	Sprocket, 1941-up	37695-41
54	<b>745862</b>	Disc, lined, set of 3, 1941-up	37931-41
55	<b>745864</b>	Disc, steel, with buffers #44, 1941-up	37977-41
56	-	Disc, 1941-up	37952-41
57	<b>745861</b>	High Performance diaphragm clutch upgrade kit, replaces #57, #62 and #60, 1941-up, Samwel	37873-41
57	<b>745898</b>	Clutch release disc, 1941-up	37873-41
58	<b>239465</b>	Nut, 1941-1973, parkerized, Colony	37361-41
58	<b>751022</b>	Nut, 1941-1973, galvanized, Zodiac	37361-41
58	<b>233439</b>	Nut, 1941-1973, galvanized, Zodiac, 10-pack	37361-41
59	<b>239464</b>	Screw with nut #58, 1941-up, Colony	37358-41
60	<b>232511</b>	Spring, set of 10, 1941-up	38077-41
61	<b>237474</b>	Lockwasher, set of 3, 1941-up	38110-41
62	<b>745897</b>	Pressure plate	38011-41
63	-	Nut	7760
64	-	Screw, 1941-1943 WL, 1943-1973 Servicar	37076-41
64	-	Screw, late 1942-up WLA, 1944-1952 WL	37077-44
64	-	Screw, late 1942-up WLA, 1944-1952 WL	2663
65	-	Washer, 1941-up	7118
66	-	Fitting, 1941-up	9851
67	<b>239456</b>	Set with 3x #61 and 3x #63, Colony	
		Clutch arm rebuilding kit 1941-1943 Solo, 1941-1973 ServiCar	
68	<b>239457</b>	#25, #26, #27, chrome, Colony	
68	<b>239458</b>	#25, #26, #27, cad plated, Colony	
68	<b>239459</b>	#25, #26, #27, parkerized, Colony	
		Clutch arm rebuilding kit 1944-1952 Solo	
68	<b>239460</b>	Chrome, Colony	
68	<b>239461</b>	Cad plated, Colony	
68	<b>239462</b>	Parkerized, Colony	
69	<b>745863</b>	Clutch linings w/rivets, 1941-up	37854-41
70	<b>745841</b>	Big Fix clutch bearing upgrade kit	

01  
HELMETS,  
LUGGAGE,  
AUDIO & MORE02  
SEAT03  
EXHAUST04  
ELECTRIC  
& LIGHT05  
ENGINE  
ELECTRICS06  
INTAKE07  
ENGINE08  
PRIMARY09  
TRANSMISSION10  
FINAL DRIVE11  
WHEELS &  
TIRE12  
BRAKE13  
FOOT  
CONTROL14  
HANDLEBAR15  
FRONT  
SUSPENSION16  
CHASSIS/  
FRAME  
& SHOCKS17  
FENDER  
& STRUTS18  
GAS TANK &  
INSTRUMENT19  
OIL TANK, FILTER  
& LINE20  
FASTENERS21  
MIRROR22  
WINDSHIELD23  
OIL, CHEMICALS  
& TOOLS24  
TECHTIPS &  
CROSS REF  
> ZPN25  
CROSS REF  
ZPN > PAGE26  
ALPHABETICAL  
INDEX



## ZODIAC'S 3" OPEN BELT DRIVE SYSTEM

A very complete 3" wide primary belt drive kit that contains the belt, complete clutch, front and rear pulley, starter pinion housing, starter pinion gear and aluminum motorplates in chrome or polished finish. There are many 3" belt drive kits on the market, some even as complete as these, but none of them are so much value for so little money. For those that want to have it all an optional outboard bearing support kit can be ordered separately. But that's not all. Another option is the Auto Clutch, a semi-automatic clutch set up. When you install this Auto Clutch you can just put the bike into gear, pull your brake and let your clutch go. Then you can even release the front brake lever, but at idle your bike still won't move. As soon as you rev the engine your clutch will engage and the bike will start rolling. When you hit the brake in heavy traffic you can just leave the bike in gear without disengaging the clutch. Just open the throttle and ride away again.

## 3" open belt drive kits for 1990 thru 2006 Softail

**210509** Polished finish, without belt side guard  
**210501** Chrome finish, complete with belt side guard

## Optional parts

**210324** Outboard bearing support kit, polished  
**210325** Outboard bearing support kit, chrome  
**144712** Auto-clutch kit for 3" belt drives

**Front pulley offset inserts permit you to match your primary belt drive unit to your particular frame and drive line combination. Inserts come complete with matching crankshaft nut**

**740138** 1/4" offset  
**740139** 1/2" offset  
**740140** 3/4" offset  
**740141** 1" offset  
**740142** 1 1/4" offset  
**740143** 1 1/2" offset  
**740144** 1 3/4" offset  
**740145** 2" offset

## Replacement parts

**290552** Starter jack shaft kit  
**144726** Clutch plate kit  
**395000** Belt, 3" wide, 141 tooth, 8mm pitch  
**210230** Mainshaft bearing



740186



740187



## BDL TOP GUARD 2 INCH BELT DRIVE

This primary belt drive kit comes with BDL's reinforced 2" belt that was developed specifically to handle the high torque and horsepower being produced by today's big inch V-Twin engines. Additionally, the system incorporates a one-piece billet motor plate, unique side guard and rear pulley cover along with the traditional BDL starter housing. They also feature a black belt guard between the motor plate and the outside cover. Kits include the very latest in clutch technology with BDL's own Ball Bearing Clutch. The state of the art design offers up to 30% more contact surface, reduced lever pull, smoother transition, super quiet operation and flawless clutch engagement.

## Fits 1990 thru 2006 Softails

*Pulleys are 52 tooth front and 69 tooth rear. Front pulley is regular BDL bolt-in insert design. For offset applications you have to order a front pulley insert separately.*

**740186** Polished  
**740187** Black  
**740188** Clear anodized

## Fits 2006 thru 2017 Dyna and 2007 thru 2017 Softails, except Screamin' Eagle, CVO, FXCW(C) Rocker and FXSB Breakout

*Pulleys are 52 tooth front and 69 tooth rear. Does not work with BDL's offset front pulley inserts.*

**740189** Polished  
**740190** Black  
**740191** Clear anodized

## Fits 2018 to present Milwaukee Eight Softail FLDE Deluxe, FLHC & FLHCS Heritage, FLSE Sport Glide, FLSE Slim, FXBB & FXBBS Street Bob, FXFB & FXFBS Fat Bob, FXLR & FXLRS Low Rider and FXST Standard

*Pulleys are 52 tooth front and 69 tooth rear. Does not work with BDL's offset front pulley inserts.*

**753592** Polished  
**753590** Black  
**753591** Chrome

## Replacement parts

**740159** Drive Belt, 2" wide, 142 tooth  
**740196** Clutch pack with seven frictions and eight steel plates



## BDL 2" BELT DRIVES WITH BALL BEARING LOCK-UP CLUTCH

The SE-500 Series belt drives offer enthusiasts a number of significant advantages over other aftermarket and stock systems. First, BDL's reinforced 2" belt was developed specifically to handle the high torque and horsepower numbers being produced by today's big inch V-Twin engines. Additionally, the system incorporates a bullet proof, one-piece billet motor plate and unique side guard and starter gear cover, as well as BDL's patented Ball Bearing Lockup clutch. The state of the art design offers up to 30% more contact surface, reduced lever pull, smoother transition, super quiet operation and flawless clutch engagement with a diaphragm style clutch spring.

## Fits 1970-1978 Shovelhead

*Complete kits include 59 tooth front pulley, clutch with 69 tooth clutch basket, belt, billet motor plate with starter housing and side guard and domed clutch cover*

**768988** Polished  
**768989** Black  
**768990** Clear anodized

## Replacement parts

**231679** Sealed motor plate bearing  
**740146** Ball Bearing Lock-Up  
**740159** Drive belt, 2" wide, 142 tooth  
**740196** Clutch pack with seven frictions and eight steel plates

**CLUTCH RELEASE FINGER**

Clutch release fingers for 1936-1984 4-speed Big Twin and 1980-1986 5-speed Big Twin.

**291256** Clutch release finger 4 Speed Big Twin 1941-1984 (OEM 37070-39)

**238179** Clutch release finger 5 Speed Big Twin 1980-1986 (OEM 37084-79)

**291258** Clutch release shaft 1941-1984 4 Speed (OEM 37074-38A)

**789982** Clutch release shaft 1980-1986 5-Speed (OEM 37083-80A)

**PRO-MAX HIGH PERFORMANCE RACE CLUTCH KITS**

These high performance clutch kits are designed to drop into the stock clutch basket yet provide increased clutch friction area and smooth, linear engagement. They are supplied with 3 sets of coil-type clutch springs that allow you to tune your clutch to any engine performance from stock to extremely wild and anything in between. Kits feature a billet aluminum clutch pressure plate with a steel liner plate, extra wide friction discs for maximum contact area and matching extra wide steel clutch discs. Installation requires small modifications to the inside of the inner and outer primary covers.

**Fits 1990-1997 FXR, Softail, Touring and Dyna models**

*Works with stock cable operated clutch mechanism, as well as most aftermarket hydraulic clutch conversion kits.*

**144415** Pro-Max High performance clutch

**Replacement parts**

**144413** Complete replacement clutch pack with all steel and friction plates

**STARTER JACKSHAFT KIT FOR BDL BELT DRIVES**

Complete jackshaft kit fits most BDL 2" and 3" belt drives for 1990-2006 Softail and 1991-2005 Dyna.

**768987** BDL starter jackshaft kit with pinion gear

**CLUTCH PUSHRODS FOR BIG TWIN WITH DIAPHRAGM CLUTCH**

Clutch pushrods for the diaphragm clutch on late 4 Speed Shovelhead, 5 Speed Shovelhead, 5 Speed Evolution Big Twin and 5 Speed Twin Cam models from 1979-2006. Each piece is heat-treated where necessary. Sold each.

**All late 1984-1986 4 Speed Big Twin**

**233446** Right end, Bender Cycle (OEM 37089-84)

**233451** Center piece, 280mm, Bender Cycle (OEM 37285-84)

**233448** Left end, Bender Cycle (OEM 37090-84)

**Late 1984 5 Speed Big Twin**

**233446** Right end, Bender Cycle (OEM 37089-84)

**233448** Left end, Bender Cycle (OEM 37090-84)

**233447** Center piece, 263.5mm, Bender Cycle (OEM 37088-84)

**1985-1986 5 Speed Big Twin**

**233449** Center piece, 283mm, Bender Cycle (OEM 37088-85)

**233446** Right end, Bender Cycle (OEM 37089-84)

**233448** Left end, Bender Cycle (OEM 37090-84)

**All 1979-early 1984 5 Speed Big Twin**

**231862** Right end, Eastern (OEM 37089-79)

**231861** Center piece, 257mm, Eastern (OEM 37088-79)

**231863** Left end, Eastern (OEM 37090-79)

**731862** Right end, Bender Cycle (OEM 37089-79)

**731861** Center piece, 257mm, Bender Cycle (OEM 37088-79)

**731863** Left end, Bender Cycle (OEM 37090-79)

**1990-1997 5 Speed Evolution Big Twin**

**789425** Right end, V-Twin Mfg. (OEM 37069-90)

**370186** Right end, Genuine Zodiac (OEM 37069-90)

**233530** Center piece, 276mm, Bender Cycle (OEM 37088-90)

**144700** Left end, Genuine Zodiac (OEM 37090-84A)

**731864** Left end, Bender Cycle (OEM 37090-84A)

**Fits all late 1984-2006 models**

**233445** Throw-out bearing retaining clip, 10 pack (OEM 11096)

**144554** Bearing kit contains: circlip, thrust washer (2), thrust bearing

**1987-1989 5 Speed Evolution Big Twin**

**233446** Right end, Bender Cycle (OEM 37089-84)

**233450** Center piece, 289.5mm, Bender Cycle (OEM 37088-87)

**233448** Left end, Bender Cycle (OEM 37090-84)

**Fits 1998-2000 5 Speed Evolution Big Twin and 1999-2006 5 Speed Twin Cam**

**370186** Right end, Genuine Zodiac (OEM 37069-90)

**789425** Right end, V-Twin Mfg. (OEM 37069-90)

**233530** Center piece, 276mm, Bender Cycle (OEM 37088-90)

**144701** Left end, Genuine Zodiac (OEM 37090-98A)

**711452** Left end, Bender Cycle (OEM 37090-98A)

01  
HELMETS,  
LUGGAGE,  
AUDIO & MORE

02  
SEAT

03  
EXHAUST

04  
ELECTRIC  
& LIGHT

05  
ENGINE  
ELECTRICS

06  
INTAKE

07  
ENGINE

08  
PRIMARY

09  
TRANSMISSION

10  
FINAL DRIVE

11  
WHEELS &  
TIRE

12  
BRAKE

13  
FOOT  
CONTROL

14  
HANDLEBAR

15  
FRONT  
SUSPENSION

16  
CHASSIS/  
FRAME  
& SHOCKS

17  
FENDER  
& STRUTS

18  
GAS TANK &  
INSTRUMENT

19  
OIL TANK, FILTER  
& LINE

20  
FASTENERS

21  
MIRROR

22  
WINDSHIELD

23  
OIL, CHEMICALS  
& TOOLS

24  
TECHTIPS &  
CROSS REF  
> ZPN

25  
CROSS REF  
ZPN > PAGE

26  
ALPHABETICAL  
INDEX

01  
02  
03  
04  
05  
06  
07  
08  
09  
10  
11  
12  
13  
14  
15  
16  
17  
18  
19  
20  
21  
22  
23  
24  
25  
26

**NEW**



### BARNETT SCORPION LOCK-UP CLUTCH FOR 1990-1997 BIG TWIN

Barnett Scorpion Billet Lock-Up clutches progressively increase pressure as RPM's increase. Easily adjustable by adding or subtracting weights on the 6 pressure arms. Barnett claims these are the ultimate in performance for your American V-Twin. Whether your bike is stock or modified- street or strip- the Scorpion has what it takes to get the job done and look good doing it. These Scorpion Billet Clutches feature a 100% or more increase in clutch surface area (compared to stock) and include a CNC machined billet aluminum pressure plate, friction plates, steel plates, a steel inner hub, and additional sets of coil springs to allow you to tune your clutch to your needs. The Scorpion can be run dry in an open belt drive or wet in a closed primary.

**751211** Fits 1990-1994 FXR, 1990-1997 Softail, 1990-1997 Touring & 1991-1997 Dyna



**712146**

### T.P.P. SUPER LIGHT WORKING PERFORMANCE CLUTCH

When you feel that it takes too much from your hand to pull the clutch the Variable Pressure Clutch (VPC) is the ultimate solution. The VPC gives you reduced spring pressure at idle, but when revving up the bob weights use centrifugal force to put more pressure on the clutch than you could ever achieve with a High Performance clutch spring. It makes for easy clutch lever work from idle to 3,000 RPM, the area where most people need to pull their clutch to shift gear. Some Variable Pressure Clutch features:

- **Centrifugal force on the bob weights works like a Lock Up clutch**
- **Reduces required clutch lever force up to 40% at idle on stock engines**
- **Improved clutch engagement when revving up**
- **Better clutch disengagement and feel**
- **Easier to find neutral**
- **Installation requires a clutch spring compressor ZPN 210080 (OEM 38515-90) and removal and re-installation of the primary cover**
- **Clutch pull becomes heavier when RPM increases**

### Replacement diaphragm springs

**721924** Heavy-Duty diaphragm clutch spring, 25% stronger than stock. Use to upgrade existing VPC #712126 for use in mildly tuned engines or VPC #712128 in High-Torque monsters



**712127**

**Fits 2006-2017 Dyna, 2007-2017 Softail (except 2013-2017 CVO models), 2009-2015 Trike & 2007-2015 Touring (except 2013-2015 CVO)**

**Note:** Fits behind most derby covers. Derby covers with a very shallow or flat inside require a spacer ring

**712127** For stock engines, gives 20% lever effort reduction. Install with stock diaphragm spring

**Fits 2006-2017 Dyna, 2007-2017 Softail (except 2013-2017 CVO models), 2009-2015 Trike & 2007-2015 Touring (except 2013-2015 CVO)**

**Note:** Fits behind most derby covers. Derby covers with a very shallow or flat inside require a spacer ring

**712134** For modified engines up to 120CI, gives no lever effort reduction. Includes Heavy-Duty diaphragm clutch spring, 25% stronger than stock

### Optional parts

**712142** Spacer for use with derby covers with a shallow or flat inner face

**721924** Heavy-Duty diaphragm clutch spring, 25% stronger than stock. Use to upgrade VPC #712127 for use in modified engines

### Replacement parts

**712145** Replacement O-ring for derby cover spacer

**Fits 1999-2017 Dyna, 1999-2015 Touring, 2000-2017 Softail and 2009-2015 Trike with 6-stud clutch**

**712146** Ultimate 2-step centrifugal force type for stock and moderately tuned engines, gives 40% easier clutch pull but 60% more pressure on the clutch pack at 4,000 RPM. Install with stock diaphragm spring. Fits behind the standard derby cover

**NEW**

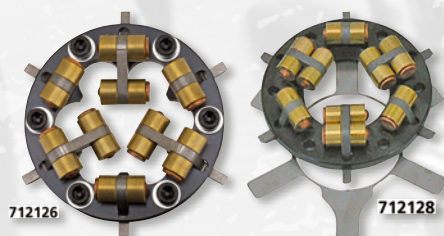


### TWIN CAM AND MILWAUKEE EIGHT OIL TRANSFER FIX

A simple solution for a well known problem on hydraulic clutch equipped Twin Cam and Milwaukee Eight models. Fluid is being drained from the transmission into the primary, causing leaking primaries or broken transmissions. Most owners do not even know they are having this problem since very few check fluid levels. Simply replace the stock clutch pushrod with this one and your problem is cured.

**Fits hydraulic clutch equipped 2015-2016 Twin Cam Touring & Trike, 2017 to present Milwaukee Eight Touring & Trike, 2015-2017 Twin Cam Softail and 2018 to present Milwaukee Eight Softail**

**700900** Milwaukee Eight "oil transfer fix" clutch pushrod (OEM 37000218)



**712126**

**712128**

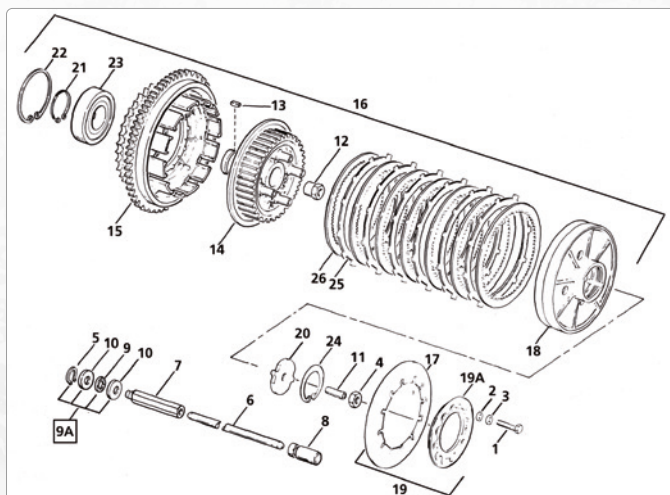
**Fits 1998-2005 Dyna, 1998-2006 Softail and 1998-2006 Touring**

**712126** For stock engines. Has 70mm radius fulcrum point, gives 40% lever effort reduction. Install with stock diaphragm spring

**712133** For mildly tuned engines. Has 70mm radius fulcrum point, gives 25% lever effort reduction. Includes Heavy-Duty diaphragm clutch spring, 25% stronger than stock

**712128** For highly tuned engines. Has 95mm radius fulcrum point, gives no lever effort reduction. Install with stock diaphragm spring

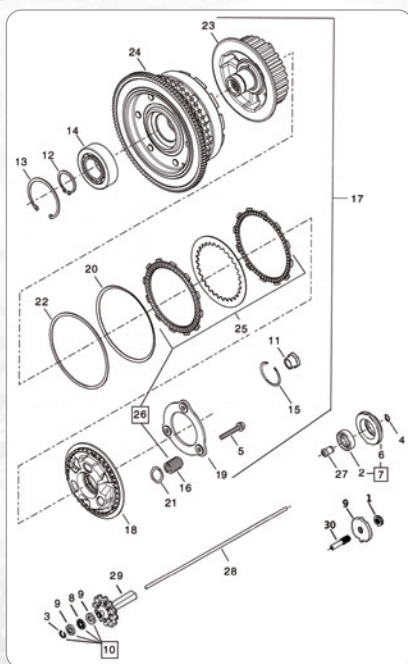
**712135** For High-Torque monsters. Has 95mm radius fulcrum point, gives 18% lever effort increase. Includes Heavy-Duty diaphragm clutch spring, 25% stronger than stock



## CLUTCH PARTS FOR 1984-1989 BIG TWIN

Pos.	ZPN	Description	OEM
1	742061	Bolt (4), 10-pack	2881W
2	-	Washer (4), 10-pack	6099
2	-	Washer (4)	6242W
3	743901	Lockwasher (4), 50-pack	7036
4	144702	Nut, Genuine Zodiac	7848W
4	711453	Nut, USA made, 5-pack	7848W
5	233445	Retaining ring, 10-pack	11096
6	233451	Push rod, clutch release, late 1984-1986	37285-84
6	233450	Push rod, clutch release, 1987-1989	37088-87
7	233446	Right side push rod end	37089-84
8	233448	Left side push rod end, late 1984-1986	37090-84
8	144700	Left side push rod end, 1987-1989	37090-84A
9	-	Bearing	37312-75
9A	144554	Bearing kit (Pos. 9 & 10)	-
10	232160	Thrust washer, 5-pack (2)	37313-80
11	233495	Adjusting stud	37357-87
12	233496	Nut, main shaft clutch side, Bender USA	37496-84
12	782495	Nut, main shaft clutch side, Eastern USA	37496-84
13	144454	Key, clutch, late 1984, 10-pack	37523-15A
13	233482	Key, clutch, 1985-up, 10-pack	37523-85
14	144506	Clutch hub, inner, Genuine Zodiac	37550-84A
15	758539	Clutch shell with sprocket and ring gear, fits late 1984 FXRS, FXRT, FLHTC, late 1984-1985 FXST and 1985 FXEF	37702-84
15	148141	Clutch shell with sprocket and ring gear, Genuine Zodiac. Fits 1985 FXR, FXWG, FXSB and Touring models and all 1986 thru 1989 Evolution Big Twin	37707-84
15	789405	Clutch shell with bearing, sprocket and ring gear, V-Twin Mfg. Fits 1985 FXR, FXWG, FXSB and Touring models and all 1986 thru 1989 Evolution Big Twin	37707-84
16	-	Clutch assy	37800-84
17	238650	Diaphragm spring plate, Alto USA	37871-84
17	232505	Diaphragm spring plate, Heavy Duty, Barnett USA	37871-84
17	149424	Diaphragm spring plate, Heavy Duty, Genuine Zodiac	37871-84
18	782496	Pressure plate	37901-84A
19	233760	Adjuster plate with Pos. 17 & 19A, Barnett USA	37902-84A
19A	740569	Adjuster plate	37902-82, 37902-86B
20	239992	Release plate, center	37903-84
21	710900	Retaining ring, 10-pack	37904-84
21	710932	Retaining ring, each	37904-84
22	239991	Retaining ring, 10-pack	37905-84
22	239443	Retaining ring, each	37905-84
23	239990	Bearing	37906-84
24	710899	Retaining ring, 10-pack	37907-84
25	238670	Friction disc, Alto USA (6)	37930-84A, 37931-84A
25	238636	Friction discs, set of 6, Alto USA	37930-84A, 37931-84A
25	238637	Friction discs, Aramid, set of 6, Alto USA	37930-84A, 37931-84A
25	232566	Friction discs, Kevlar, set of 6, Barnett USA	37930-84A, 37931-84A
25	721920	Friction discs, Carbon, set of 6, Barnett USA	37930-84A, 37931-84A
26	149416	Steel drive disc, Genuine Zodiac (7)	37975-84A
26	232501	Steel drive disc, Barnett USA (7)	37975-84A
26	238671	Steel drive disc, Alto USA (7)	37975-84A
26	238648	Steel drive disc, set of 7, Alto USA	37975-84A

01  
HELMETS,  
LUGGAGE,  
AUDIO & MORE02  
SEAT03  
EXHAUST04  
ELECTRIC  
& LIGHT05  
ENGINE  
ELECTRICS06  
INTAKE07  
ENGINE08  
PRIMARY09  
TRANSMISSION10  
FINAL DRIVE11  
WHEELS &  
TIRE12  
BRAKE13  
FOOT  
CONTROL14  
HANDLEBAR15  
FRONT  
SUSPENSION16  
CHASSIS/  
FRAME  
& SHOCKS17  
FENDER  
& STRUTS18  
GAS TANK &  
INSTRUMENT19  
OIL TANK, FILTER  
& LINE20  
FASTENERS21  
MIRROR22  
WINDSHIELD23  
OIL, CHEMICALS  
& TOOLS24  
TECHTIPS &  
CROSS REF  
> ZPN25  
CROSS REF  
ZPN > PAGE26  
ALPHABETICAL  
INDEX


**2013 TO PRESENT "ASSIST AND SLIP" CLUTCH**

The Assist-And-Slip clutch was introduced on the 2013 CVO models and is used on:

**Softail models**

FXSBSE CVO Breakout 2013-2014  
 FXSE CVO Pro Street Breakout 2016-2017  
 FLSS Slim S 2016-2017  
 FLSTNSE Softail CVO Deluxe 2014-2015  
 FLSTFBS Fat Boy Lo/Special 2016-2017  
 & all 2018 to present Softail models

**Touring models**

FLHRSE CVO Road King 2013-2014  
 FLHTCUL Electra Glide Ultra Classic Low 2015-2016  
 FLHTKL Ultra Limited Low 2015-2016  
 2013 FLHTCUSE8 CVO Ultra Classic Electra Glide  
 FLHTKSE CVO Limited 2014-2016  
 FLHXSE CVO Street Glide 2015-2016  
 FLTRUSE CVO Road Glide Ultra 2015-2016  
 FLTRXSE2 CVO Road Glide 2013  
 & all 2017 to present Touring models

**Trike models**

FLHTCUTG Tri Glide Ultra 2014 to present  
 FLRT Freewheeler 2015 to present

**ASSIST & SLIP CLUTCH**

Pos.	ZPN	Description	OEM
1.	144702	Jamnut, Genuine Zodiac, each	7848W
1.	711453	Jamnut, dealer 5-pack	7848W
2.	711847	Bearing	8885
3.	233445	Retaining ring, cable clutch, dealer 10-pack	11096
4.	238904	Retaining ring, dealer 10-pack	11143
5.	-	Bolt, M6x1x30 hex flange, except 2018-up Softail	36706-01K
5.	-	Bolt, 2018-up Softail	37000241
6.	234132	Release plate only	37918-91
7.	-	Release plate with bearing #2	36731-91
8.	-	Bearing, clutch pushrod	37312-75
9.	232160	Bearing thrust race, dealer 5-pack	37313-80
10.	144554	Pushrod bearing kit	-
11.	144486	Mainshaft nut, Genuine Zodiac	37496-90A
11.	782672	Mainshaft nut, Bender USA	37496-90A
12.	370183	Retaining ring, Genuine Zodiac	37904-90
12.	710903	Retaining ring, dealer 10-pack	37904-90
13.	789241	Retaining ring, Twin Cam, 5-pack	37905-00
13.	-	Retaining ring, Milwaukee Eight	37000169
14.	234573	Bearing, Twin Cam	37906-11
14.	-	Bearing, Milwaukee Eight	37000168
15.	370185	Retaining ring, Genuine Zodiac	37909-90
15.	239381	Retaining ring, dealer 5-pack	37909-90
16.	-	Coil spring, Twin Cam	11700002
16.	144434	Coil spring, standard, set of three, Milwaukee Eight	37000270A
16.	144435	Coil spring, Heavy-Duty, set of three, Milwaukee Eight	37000288
17.	-	Clutch assembly, Twin Cam	37000026
17.	-	Clutch assembly, 2017-up Touring & Trike	37000254
17.	-	Clutch assembly, 2018-up Softail	37000263
18.	-	Pressure plate, all except 2018-up Softail	37000032
18.	-	Pressure plate, 2018-up Softail	37000240
19.	-	Stopper plate	37000033
20.	-	Damper spring	37000034
21.	-	Seat, Twin Cam	37000035
21.	-	Seat, Milwaukee Eight	37000219
22.	-	Damper spring seat	37000036
23.	148427	Clutch hub, 2013-2017 Softail, 2013-up Touring & Trike	37000083
23.	148425	Clutch hub, 2018-up Softail	37000239
24.	-	Clutch basket only	-
25.	-	Clutch disc kit, Twin Cam	37000118
25.	144438	Clutch disc kit, Milwaukee Eight, Genuine Zodiac	37000258
26.	760717	Clutch disc & spring kit, Twin Cam, Kevlar, Barnett	37000118
26.	144439	Clutch disc & spring kit, Milwaukee Eight, Genuine Zodiac	37000287
26.	760716	Clutch disc & spring kit, Milwaukee Eight, Kevlar, Barnett	37000287
27.	-	Release rod, hydraulic clutch	37000217
28.	700900	Pushrod, hydraulic clutch	37000218
28.	231864	Pushrod, cable clutch	37092-06
29.	370186	Oil slinger, cable clutch, Genuine Zodiac	37069-90A
29.	789425	Oil slinger, cable clutch, V-Twin Mfg.	37069-90A
30.	144701	Adjuster screw, cable clutch, Genuine Zodiac	37090-98A
30.	711452	Adjuster screw, cable clutch, Bender USA	37090-98A