



Wheel Assemblies 11-062



Wheel Rims 11-065



Spokes 11-067

11



Wheel Hubs 11-068



Wheel Hub Parts 11-070



Axles & Hardware 11-070



Wheel Adjusters & Axle Plates 11-071



Avon Tires 11-071



Metzeler Tires 11-072

01
HELMETS,
LUGGAGE,
AUDIO & MORE

02
SEAT

03
EXHAUST

04
ELECTRIC
& LIGHT

05
ENGINE
ELECTRICS

06
INTAKE

07
ENGINE

08
PRIMARY

09
TRANSMISSION

10
FINAL DRIVE

11
WHEELS &
TIRE

12
BRAKE

13
FOOT
CONTROL

14
HANDLEBAR

15
FRONT
SUSPENSION

16
CHASSIS/
FRAME
& SHOCKS

17
FENDER
& STRUTS

18
GAS TANK &
INSTRUMENT

19
OIL TANK, FILTER
& LINE

20
FASTENERS

21
MIRROR

22
WINDSHIELD

23
OIL, CHEMICALS
& TOOLS

24
TECHTIPS &
CROSS REF
> ZPN

25
CROSS REF
ZPN > PAGE

26
ALPHABETICAL
INDEX



NEW



NEW



FRONT WHEEL ASSEMBLIES FOR 2000 AND LATER SPORTSTER & DYNA WITH ROLLED EDGE RIM
Ready to install front wheels with chrome plated alloy hub for single or dual disc and the pre-2005 style spoke pattern. Wheels take 3/4" wheel axles.

Fits 2000-2004 Sportster and 2000-2003 FXD, FXDL, FXDP & FXDX Dyna

- 710966** 19x1.85 with Custom Style rolled edge rim, Zodiac hub and chrome spokes
- 710974** 19x1.85 with Custom Style rolled edge rim, V-Twin hub and chrome spokes
- 710967** 19x1.85 with Custom Style rolled edge rim, Zodiac hub and stainless steel spokes
- 710975** 19x1.85 with Custom Style rolled edge rim, V-Twin hub and stainless steel spokes
- 710964** 21x2.15 with Custom Style rolled edge rim, Zodiac hub and chrome spokes
- 710976** 21x2.15 with Custom Style rolled edge rim, V-Twin hub and chrome spokes
- 710965** 21x2.15 with Custom Style rolled edge rim, Zodiac hub and stainless steel spokes
- 710977** 21x2.15 with Custom Style rolled edge rim, V-Twin hub and stainless steel spokes



40-SPOKE WHEELS FOR 2000 TO PRESENT XL SPORTSTER

These wheels are laced and trued in-house upon order, using the all-time classic chrome Harley-Davidson style Drop Center rims and Zodiac or V-Twin Mfg. wheel hubs. All of this with your choice of chrome spokes and nipples or stainless steel spokes and nipples. Wheels are for use with common stock 2000-up style disc brake rotors and drive pulleys with a 2.22" inner diameter with five bolt holes on a 3 1/4" pitch.

Fits front on 2000-2004 XL883 Standard, XL883 Hugger and XL1200 Standard, 2002-2003 XL883R, 2000-2003 XL1200S and 2004 XL1200R, stock 3/4" front wheel axle and single or dual disc

- 710962** 2.50x19, chrome spokes and Genuine Zodiac chromed aluminum hub
- 710963** 2.50x19, stainless steel spokes and Genuine Zodiac chromed aluminum hub
- 769161** 2.50x19, chrome spokes and V-Twin Mfg. chromed aluminum hub
- 769162** 2.50x19, stainless steel spokes and V-Twin Mfg. chromed aluminum hub

Fits front on 2000-2004 XL883C Custom and XL1200C Custom, stock 3/4" front wheel axle

- 710968** 2.15x21, chrome spokes and Genuine Zodiac chromed aluminum hub
- 710969** 2.15x21, stainless steel spokes and Genuine Zodiac chromed aluminum hub
- 769307** 2.15x21, chrome spokes and V-Twin Mfg. chromed aluminum hub
- 769308** 2.15x21, stainless steel spokes and V-Twin Mfg. chromed aluminum hub

Fits front on 2005-2007 XL883 Standard, XL883L, XL883R, XL1200R, 2006-2007 XL1200L and 2007 XL1200N, stock 3/4" front wheel axle and single or dual disc

- 710970** 2.50x19, chrome spokes and Genuine Zodiac chromed aluminum hub
- 710971** 2.50x19, stainless steel spokes and Genuine Zodiac chromed aluminum hub
- 769221** 2.50x19, chrome spokes and V-Twin Mfg. chromed aluminum hub
- 769222** 2.50x19, stainless steel spokes and V-Twin Mfg. chromed aluminum hub

Fits front on 2005-2007 XL883C Custom and XL1200C Custom, stock 3/4" front wheel axle

- 710972** 2.15x21, chrome spokes and Genuine Zodiac chromed aluminum hub
- 710973** 2.15x21, stainless steel spokes and Genuine Zodiac chromed aluminum hub
- 769229** 2.15x21, chrome spokes and V-Twin Mfg. chromed aluminum hub
- 769230** 2.15x21, stainless steel spokes and V-Twin Mfg. chromed aluminum hub

Fits front on 2008-2009 XL883 Standard, 2008-2011 XL883L & XL1200L, 2008-2012 XL883N & XL1200N, stock 25mm wheel axle

- 769223** 2.50x19, chrome spokes and V-Twin Mfg. chromed aluminum hub, no ABS
- 769224** 2.50x19, stainless steel spokes and V-Twin Mfg. chromed aluminum hub, no ABS
- 769225** 2.50x19, chrome spokes and V-Twin Mfg. chromed aluminum hub, ABS
- 769226** 2.50x19, stainless steel spokes and V-Twin Mfg. chromed aluminum hub, ABS

Fits front on 2008-2010 XL883C & XL1200C, 2012-2016 XL1200V and 2013 XL883N, stock 25mm wheel axle

- 769231** 2.15x21, chrome spokes and V-Twin Mfg. chromed aluminum hub, no ABS
- 769232** 2.15x21, stainless steel spokes and V-Twin Mfg. chromed aluminum hub, no ABS
- 769233** 2.15x21, chrome spokes and V-Twin Mfg. chromed aluminum hub, ABS
- 769234** 2.15x21, stainless steel spokes and V-Twin Mfg. chromed aluminum hub, ABS

Fits front on 2011-2020 XL1200C, XL1200CB & XL1200CP and 2010-2015 XL1200X, stock 25mm wheel axle

- 769267** 3.00x16, chrome spokes and V-Twin Mfg. chromed aluminum hub, no ABS
- 769268** 3.00x16, stainless steel spokes and V-Twin Mfg. chromed aluminum hub, no ABS
- 769269** 3.00x16, chrome spokes and V-Twin Mfg. chromed aluminum hub, ABS
- 769270** 3.00x16, stainless steel spokes and V-Twin Mfg. chromed aluminum hub, ABS

Fits rear on 2000-2004 Sportster, stock 3/4" rear wheel axle

- 769153** 3.00x16, chrome spokes and Genuine Zodiac chromed steel hub
- 769154** 3.00x16, stainless steel spokes and Genuine Zodiac chromed steel hub
- 769155** 3.00x16, chrome spokes and V-Twin Mfg. chromed alloy hub
- 769156** 3.00x16, stainless steel spokes and V-Twin Mfg. chromed alloy hub

Fits rear on 2005-2007 Sportster

- 769163** 3.00x16, chrome spokes and Genuine Zodiac chromed steel hub
- 769164** 3.00x16, chrome spokes and V-Twin Mfg. chromed alloy hub
- 769165** 3.00x16, stainless steel spokes and Genuine Zodiac chromed steel hub
- 769166** 3.00x16, stainless steel spokes and V-Twin Mfg. chromed alloy hub



Fits rear on 2008-2009 XL883 Standard, 2008-2010 XL883C, 2008-2010 XL883L, 2009 to present XL883N, 2008-2015 XL883R, 2008-2020 XL1200C, CA, CB, CP & CX, 2008-2011 XL1200L, 2008 to present XL1200N & NS, 2008-2009 XL1200R, 2012-2016 XL1200V and 2010 to present XL1200X & XS, stock 25mm wheel axle

- 769279** 3.00x16, chrome spokes and V-Twin Mfg. chromed alloy hub, no ABS
769281 3.00x16, chrome spokes and V-Twin Mfg. chromed alloy hub, ABS
769280 3.00x16, stainless steel spokes and V-Twin Mfg. chromed alloy hub, no ABS
769282 3.00x16, stainless steel spokes and V-Twin Mfg. chromed alloy hub, ABS

Fits rear on 2011-2020 XL883L and 2014-2020 XL1200T

- 769283** 4.50x17, chrome spokes and V-Twin Mfg. chromed alloy hub, no ABS
769284 4.50x17, stainless steel spokes and V-Twin Mfg. chromed alloy hub, no ABS
769285 4.50x17, chrome spokes and V-Twin Mfg. chromed alloy hub, ABS
769286 4.50x17, stainless steel spokes and V-Twin Mfg. chromed alloy hub, ABS



40-SPOKE WHEELS FOR 2000-2017 DYNA

These wheels are laced and trued in-house upon order, using the all-time classic chrome Harley-Davidson style Drop Center rims and Zodiac or V-Twin Mfg. wheel hubs. All of this with your choice of chrome spokes and nipples or stainless steel spokes and nipples. Wheels are for use with common stock 2000-up style disc brake rotors and drive pulleys with a 2.22" inner diameter with five bolt holes on a 3 1/4" pitch.

Fits front on 2000-2003 FXD & FXDL, stock 3/4" front wheel axle and single disc

- 710962** 2.50x19, chrome spokes and Genuine Zodiac chromed aluminum hub
710963 2.50x19, stainless steel spokes and Genuine Zodiac chromed aluminum hub
769161 2.50x19, chrome spokes and V-Twin Mfg. chromed aluminum hub
769162 2.50x19, stainless steel spokes and V-Twin Mfg. chromed aluminum hub

Fits front on 2000-2003 FXD & FXDL, stock 3/4" front wheel axle and single or dual disc

- 710962** 2.50x19, chrome spokes and Genuine Zodiac chromed aluminum hub
710963 2.50x19, stainless steel spokes and Genuine Zodiac chromed aluminum hub
769235 2.50x19, chrome spokes and V-Twin Mfg. chromed aluminum hub
769236 2.50x19, stainless steel spokes and V-Twin Mfg. chromed aluminum hub

Fits front on 2004-2005 FXD, FXDC, FXDL & FXDX, stock 1" front wheel axle and single or dual disc

- 710978** 2.50x19, chrome spokes and Genuine Zodiac chromed aluminum hub
710979 2.50x19, stainless steel spokes and Genuine Zodiac chromed aluminum hub
769213 2.50x19, chrome spokes and V-Twin Mfg. chromed aluminum hub
769214 2.50x19, stainless steel spokes and V-Twin Mfg. chromed aluminum hub

Fits front on 2006-2007 FXD, FXDB, FXDC & FXDL, stock 25mm front wheel axle and single disc

- 769215** 2.50x19, chrome spokes and V-Twin Mfg. chromed aluminum hub
769216 2.50x19, stainless steel spokes and V-Twin Mfg. chromed aluminum hub

Fits front on 2008-2017 FXDB, FXDBB, FXDBC, FXDBP, FXDC, FXDL & FXDLS

- 769203** 2.50x19, chrome spokes and V-Twin Mfg. chromed aluminum hub, no ABS
769204 2.50x19, stainless steel spokes and V-Twin Mfg. chromed aluminum hub, no ABS
769205 2.50x19, chrome spokes and V-Twin Mfg. chromed aluminum hub, ABS
769206 2.50x19, stainless steel spokes and V-Twin Mfg. chromed aluminum hub, ABS

Fits front on 2000-2004 FXDWG Dyna Wide Glide, stock 3/4" front wheel axle

- 769175** 2.15x21, chrome spokes and Genuine Zodiac chromed aluminum hub
769176 2.15x21, stainless steel spokes and Genuine Zodiac chromed aluminum hub
769177 2.15x21, chrome spokes and V-Twin Mfg. chromed aluminum hub
769178 2.15x21, stainless steel spokes and V-Twin Mfg. chromed aluminum hub

Fits front on 2005 FXDWG Dyna Wide Glide, stock 1" front wheel axle

- 769251** 2.15x21, chrome spokes and Genuine Zodiac chromed aluminum hub
769252 2.15x21, stainless steel spokes and Genuine Zodiac chromed aluminum hub
769253 2.15x21, chrome spokes and V-Twin Mfg. chromed aluminum hub
769254 2.15x21, stainless steel spokes and V-Twin Mfg. chromed aluminum hub

Fits front on 2006-2017 FXDWG Dyna Wide Glide, stock 25mm front wheel axle

- 769197** 2.15x21, chrome spokes and V-Twin Mfg. chromed aluminum hub, no ABS
769198 2.15x21, stainless steel spokes and V-Twin Mfg. chromed aluminum hub, no ABS
769201 2.15x21, chrome spokes and V-Twin Mfg. chromed aluminum hub, ABS
769202 2.15x21, stainless steel spokes and V-Twin Mfg. chromed aluminum hub, ABS

Fits rear on 2000-2004 Dyna, stock 3/4" rear wheel axle

- 769153** 3.00x16, chrome spokes and Genuine Zodiac chromed steel hub
769154 3.00x16, stainless steel spokes and Genuine Zodiac chromed steel hub
769155 3.00x16, chrome spokes and V-Twin Mfg. chromed alloy hub
769156 3.00x16, stainless steel spokes and V-Twin Mfg. chromed alloy hub

Fits rear on 2005 Dyna, stock 1" rear wheel axle

- 769163** 3.00x16, chrome spokes and Genuine Zodiac chromed aluminum hub
769164 3.00x16, chrome spokes and V-Twin Mfg. chromed aluminum hub
769165 3.00x16, stainless steel spokes and Genuine Zodiac chromed aluminum hub
769166 3.00x16, stainless steel spokes and V-Twin Mfg. chromed aluminum hub

Fits rear on 2006-2007 Dyna, stock 1" rear wheel axle

- 769291** 4.50x17, chrome spokes and V-Twin Mfg. chromed alloy hub
769292 4.50x17, stainless steel spokes and V-Twin Mfg. chromed alloy hub
769293 4.50x17, chrome spokes and Zodiac chromed steel hub
769294 4.50x17, stainless steel spokes and Zodiac chromed steel hub

Fits rear on 2008-2017 FXD, FXDB, FXDBP, FXDC, FXDF, FXDL, FXDLS and 2008-2010 FXDWG, stock 25mm rear wheel axle

- 769295** 4.50x17, chrome spokes and V-Twin Mfg. chromed alloy hub, no ABS
769296 4.50x17, stainless steel spokes and V-Twin Mfg. chromed alloy hub, no ABS
769297 4.50x17, chrome spokes and V-Twin Mfg. chromed alloy hub, ABS
769298 4.50x17, stainless steel spokes and V-Twin Mfg. chromed alloy hub, ABS

Fits rear on 2011-2017 FXDWG

- 769299** 4.50x17, chrome spokes and V-Twin Mfg. chromed alloy hub, no ABS
769300 4.50x17, stainless steel spokes and V-Twin Mfg. chromed alloy hub, no ABS
769301 4.50x17, chrome spokes and V-Twin Mfg. chromed alloy hub, ABS
769302 4.50x17, stainless steel spokes and V-Twin Mfg. chromed alloy hub, ABS

01	HELMETS, LUGGAGE, AUDIO & MORE
02	SEAT
03	EXHAUST
04	ELECTRIC & LIGHT
05	ENGINE ELECTRICS
06	INTAKE
07	ENGINE
08	PRIMARY
09	TRANSMISSION
10	FINAL DRIVE
11	WHEELS & TIRE
12	BRAKE
13	FOOT CONTROL
14	HANDLEBAR
15	FRONT SUSPENSION
16	CHASSIS/FRAME & SHOCKS
17	FENDER & STRUTS
18	GAS TANK & INSTRUMENT
19	OIL TANK, FILTER & LINE
20	FASTENERS
21	MIRROR
22	WINDSHIELD
23	OIL, CHEMICALS & TOOLS
24	TECHTIPS & CROSS REF > ZPN
25	CROSS REF > PAGE
26	ALPHABETICAL INDEX

NEW



40-SPOKE WHEELS FOR 2000 TO PRESENT SOFTAIL

These stock size wheels are laced and trued in-house upon order, using the all-time classic chrome Harley-Davidson style Drop Center rims and Zodiac or V-Twin Mfg. wheel hubs. All of this with your choice of chrome spokes and nipples or stainless steel spokes and nipples. Wheels are for use with common stock 2000-up style disc brake rotors and final drive pulleys with a 2.22" inner diameter and five bolt holes on a 3 1/4" pitch.

Fits front on 2000-2004 FLSTC Softail, stock 3/4" front wheel axle

- 710984** 3.00x16, chrome spokes and Genuine Zodiac chromed aluminum hub
- 710985** 3.00x16, stainless steel spokes and Genuine Zodiac chromed aluminum hub
- 769172** 3.00x16, chrome spokes and V-Twin Mfg. chromed aluminum hub
- 769174** 3.00x16, stainless steel spokes and V-Twin Mfg. chromed aluminum hub

Fits front on 2000-2003 FLSTS Springer, stock 3/4" front wheel axle

- 710992** 3.00x16, chrome spokes and Genuine Zodiac chromed aluminum hub
- 710993** 3.00x16, stainless steel spokes and Genuine Zodiac chromed aluminum hub
- 769211** 3.00x16, chrome spokes and V-Twin Mfg. chromed aluminum hub
- 769212** 3.00x16, stainless steel spokes and V-Twin Mfg. chromed aluminum hub

Fits front on 2005-2007 FLST, FLSTC, FLSTN & FLSTSC, stock 3/4" front wheel axle

- 710986** 3.00x16, chrome spokes and Genuine Zodiac chromed aluminum hub
- 710987** 3.00x16, stainless steel spokes and Genuine Zodiac chromed aluminum hub
- 769171** 3.00x16, chrome spokes and V-Twin Mfg. chromed aluminum hub
- 769173** 3.00x16, stainless steel spokes and V-Twin Mfg. chromed aluminum hub

Fits front on 2008-2010 FLST, 2008-2017 FLSTC & FLSTN, 2018-2020 FLDE, 2018 to present FLHC & FLHCS, stock 25mm front wheel axle

- 769207** 3.00x16, chrome spokes and V-Twin Mfg. chromed aluminum hub, no ABS
- 769208** 3.00x16, chrome spokes and V-Twin Mfg. chromed aluminum hub, ABS
- 769209** 3.00x16, stainless steel spokes and V-Twin Mfg. chromed aluminum hub, no ABS
- 769210** 3.00x16, stainless steel spokes and V-Twin Mfg. chromed aluminum hub, ABS

Fits front on 2008-2011 FLSTSB, stock 25mm front wheel axle

- 769259** 3.00x16, chrome spokes and V-Twin Mfg. chromed aluminum hub, no ABS
- 769260** 3.00x16, stainless steel spokes and V-Twin Mfg. chromed aluminum hub, no ABS
- 769261** 3.00x16, chrome spokes and V-Twin Mfg. chromed aluminum hub, ABS
- 769262** 3.00x16, stainless steel spokes and V-Twin Mfg. chromed aluminum hub, ABS

Fits front 2012-2017 FLS, 2016-2017 FLSS and 2018 to present FLSL, stock 25mm front wheel axle

- 769263** 3.00x16, stainless steel spokes and V-Twin Mfg. chromed aluminum hub, no ABS
- 769264** 3.00x16, stainless steel spokes and V-Twin Mfg. chromed aluminum hub, no ABS
- 769265** 3.00x16, chrome spokes and V-Twin Mfg. chromed aluminum hub, ABS
- 769266** 3.00x16, stainless steel spokes and V-Twin Mfg. chromed aluminum hub, ABS

Fits front on 2000-2004 FXST, stock 3/4" front wheel axle

- 710988** 2.15x21, chrome spokes and Genuine Zodiac chromed steel hub
- 710989** 2.15x21, stainless steel spokes and Genuine Zodiac chromed steel hub
- 769243** 2.15x21, chrome spokes and V-Twin Mfg. chromed alloy hub
- 769244** 2.15x21, stainless steel spokes and V-Twin Mfg. chromed alloy hub

Fits front on 2000-2004 FXSTS Springer, stock 3/4" front wheel axle

- 769179** 2.15x21, chrome spokes and Genuine Zodiac chromed steel hub
- 769180** 2.15x21, stainless steel spokes and Genuine Zodiac chromed steel hub
- 769181** 2.15x21, chrome spokes and V-Twin Mfg. chromed alloy hub
- 769182** 2.15x21, stainless steel spokes and V-Twin Mfg. chromed alloy hub

Fits front on 2005-2007 FXST, 2007 FXSTB, FXSTC and FXSTD, stock 3/4" front wheel axle

- 710990** 2.15x21, chrome spokes and Genuine Zodiac chromed steel hub
- 710991** 2.15x21, stainless steel spokes and Genuine Zodiac chromed steel hub
- 769245** 2.15x21, chrome spokes and V-Twin Mfg. chromed alloy hub
- 769246** 2.15x21, stainless steel spokes and V-Twin Mfg. chromed alloy hub

Fits front on 2005-2006 FXSTS Springer, stock 3/4" front wheel axle

- 710994** 2.15x21, chrome spokes and Genuine Zodiac chromed steel hub
- 710995** 2.15x21, stainless steel spokes and Genuine Zodiac chromed steel hub
- 769241** 2.15x21, chrome spokes and V-Twin Mfg. chromed alloy hub
- 769242** 2.15x21, stainless steel spokes and V-Twin Mfg. chromed alloy hub

Fits front on 2008-2015 FXST, 2008-2009 FXSTB, 2008-2010 FXSTC and 2011-2013 FXS, stock 25mm front wheel axle

- 769239** 2.15x21, chrome spokes and V-Twin Mfg. chromed alloy hub, no ABS
- 769240** 2.15x21, stainless steel spokes and V-Twin Mfg. chromed alloy hub, no ABS
- 769247** 2.15x21, chrome spokes and V-Twin Mfg. chromed alloy hub with ABS
- 769248** 2.15x21, stainless steel spokes and V-Twin Mfg. chromed alloy hub with ABS

Fits rear on all 2000-2004 Softail, stock 3/4" rear wheel axle

- 769153** 3.00x16, chrome spokes and Genuine Zodiac chromed aluminum hub
- 769154** 3.00x16, stainless steel spokes and Genuine Zodiac chromed aluminum hub
- 769155** 3.00x16, chrome spokes and V-Twin Mfg. chromed aluminum hub
- 769156** 3.00x16, stainless steel spokes and V-Twin Mfg. chromed aluminum hub

Fits rear on all 2005-2007 Softail, stock 3/4" rear wheel axle

- 769271** 3.00x16, chrome spokes and Genuine Zodiac chromed aluminum hub
- 769272** 3.00x16, stainless steel spokes and Genuine Zodiac chromed aluminum hub
- 769273** 3.00x16, chrome spokes and V-Twin Mfg. chromed aluminum hub
- 769274** 3.00x16, stainless steel spokes and V-Twin Mfg. chromed aluminum hub

Fits rear on 2009-2010 FLST, 2008-2017 FLSTC & FLSTN, 2011-2013 FXS, 2018-2020 FLDE, 2018 to present FLHC, FLHCS, FLTB, FLSL, FXBB, FXBBS, FXFB, FXFBS, FXLR & FXLRS, 2012-2017 FLS & FLSS and 2020 to present FXST, stock 25mm rear wheel axle

- 769275** 3.00x16, chrome spokes and Genuine Zodiac chromed aluminum hub, no ABS
- 769276** 3.00x16, stainless steel spokes and Genuine Zodiac chromed aluminum hub, no ABS
- 769277** 3.00x16, chrome spokes and V-Twin Mfg. chromed aluminum hub, ABS
- 769278** 3.00x16, stainless steel spokes and V-Twin Mfg. chromed aluminum hub, ABS

Fits rear on 2008-2017 FLSTF, FLSTFB & FLSTFBS, 2014 FLSTNSE, 2008-2011 FLSTSB, 2008-2015 FXST, 2008-2009 FXSTB and 2009-2010 FXSTC, stock 25mm rear wheel axle

- 769287** 6.00x17, chrome spokes and V-Twin Mfg. chromed alloy hub, no ABS
- 769288** 6.00x17, stainless steel spokes and V-Twin Mfg. chromed alloy hub, no ABS
- 769289** 6.00x17, chrome spokes and V-Twin Mfg. chromed alloy hub, ABS
- 769290** 6.00x17, stainless steel spokes and V-Twin Mfg. chromed alloy hub, ABS





40-SPOKE WHEELS FOR 2000 TO PRESENT TOURING

These stock size wheels are laced and trued in-house upon order, using the all-time classic chrome Harley-Davidson style Drop Center rims and Zodiac or V-Twin Mfg. wheel hubs. All of this with your choice of chrome spokes and nipples or stainless steel spokes and nipples. Front and rear wheels are for use with common stock 2000-up style disc brake rotors a 2.22" inner diameter with five bolt holes on a 3 1/4" pitch. Rear wheels for 2000-2007 models are for stock style drive pulleys with a 2.22" inner diameter with five bolt holes on a 3 1/4" pitch. Rear wheels for 2008 models take the stock cush drive cup for the drive pulley. Rear wheels for 2009 to present models take the stock cush drive and drive pulley.

Fits front on 2000-2004 Touring, stock 1" front wheel axle

- 710980** 3.00x16, chrome spokes and Genuine Zodiac chromed aluminum hub
- 710981** 3.00x16, stainless steel spokes and Genuine Zodiac chromed aluminum hub
- 769151** 3.00x16, chrome spokes and V-Twin Mfg. chromed aluminum hub
- 769152** 3.00x16, stainless steel spokes and V-Twin Mfg. chromed aluminum hub

Fits front on 2005-2007 Touring, stock 1" front wheel axle

- 710982** 3.00x16, chrome spokes and Genuine Zodiac chromed aluminum hub
- 710983** 3.00x16, stainless steel spokes and Genuine Zodiac chromed aluminum hub
- 769187** 3.00x16, chrome spokes and V-Twin Mfg. chromed aluminum hub
- 769188** 3.00x16, stainless steel spokes and V-Twin Mfg. chromed aluminum hub

Fits front on 2008 to present Touring, stock 25mm wheel axle

- 769189** 3.00x16, chrome spokes and V-Twin Mfg. chromed aluminum hub, no ABS
- 769190** 3.00x16, stainless steel spokes and V-Twin Mfg. chromed aluminum hub, no ABS
- 769191** 3.00x16, chrome spokes and V-Twin Mfg. chromed aluminum hub, ABS
- 769192** 3.00x16, stainless steel spokes and V-Twin Mfg. chromed aluminum hub, ABS
- 769255** 3.50x17, chrome spokes and V-Twin Mfg. chromed aluminum hub, no ABS
- 769256** 3.50x17, stainless steel spokes and V-Twin Mfg. chromed aluminum hub, no ABS
- 769257** 3.50x17, chrome spokes and V-Twin Mfg. chromed aluminum hub, ABS
- 769258** 3.50x17, stainless steel spokes and V-Twin Mfg. chromed aluminum hub, ABS

NEW

Fits rear on 2000-2001 Touring, stock 3/4" rear wheel axle

- 769153** 3.00x16, chrome spokes and Genuine Zodiac chromed steel hub
- 769154** 3.00x16, stainless steel spokes and Genuine Zodiac chromed steel hub
- 769155** 3.00x16, chrome spokes and V-Twin Mfg. chromed alloy hub
- 769156** 3.00x16, stainless steel spokes and V-Twin Mfg. chromed alloy hub

Fits rear on 2002-2004 Touring, stock 1" rear wheel axle

- 769157** 3.00x16, chrome spokes and Genuine Zodiac chromed steel hub
- 769158** 3.00x16, stainless steel spokes and Genuine Zodiac chromed steel hub
- 769159** 3.00x16, chrome spokes and V-Twin Mfg. chromed alloy hub
- 769160** 3.00x16, stainless steel spokes and V-Twin Mfg. chromed alloy hub

Fits rear on 2005-2007 Touring, stock 1" rear wheel axle

- 769163** 3.00x16, chrome spokes and Genuine Zodiac chromed aluminum hub
- 769164** 3.00x16, chrome spokes and V-Twin Mfg. chromed aluminum hub
- 769165** 3.00x16, stainless steel spokes and Genuine Zodiac chromed aluminum hub
- 769166** 3.00x16, stainless steel spokes and V-Twin Mfg. chromed aluminum hub

Fits rear on 2008 Touring, stock 25mm rear wheel axle

- 769167** 3.00x16, chrome spokes and Genuine Zodiac chromed aluminum hub
- 769168** 3.00x16, stainless steel spokes and Genuine Zodiac chromed aluminum hub
- 769169** 3.00x16, chrome spokes and V-Twin Mfg. chromed aluminum hub, ABS
- 769170** 3.00x16, stainless steel spokes and V-Twin Mfg. chromed aluminum hub, ABS

Fits rear on 2009 to present Touring, stock 25mm rear wheel axle

- 769303** 5.00x16, chrome spokes and V-Twin Mfg. chromed alloy hub, no ABS
- 769304** 5.00x16, stainless steel spokes and V-Twin Mfg. chromed alloy hub, no ABS
- 769305** 5.00x16, chrome spokes and V-Twin Mfg. chromed alloy hub, ABS
- 769306** 5.00x16, stainless steel spokes and V-Twin Mfg. chromed alloy hub, ABS

NEW


BLACK STOCK REPLACEMENT DROP CENTER RIMS
Rims are the gloss black powdercoated version of 2005 to present chrome rims and are used on many 2007 to present models. Can also be used on 1940-2004 models when laced using the 2005 and later spoke pattern and spokes.

- 789930** Black 3.00x16" 40-hole rim for steel side valve and 2005-up spoke pattern (OEM 43017-07)
- 789931** Black 3.00x19" 40-hole rim for steel side valve and 2005-up spoke pattern (OEM 41426-07)
- 789938** Black 5.00x16" 40-hole rim for 2005-up spoke pattern (OEM 41445-09)

NEW


CHROME ALUMINUM PROFILE REAR WHEEL RIMS
Perfect copy of the OEM style wheel rims as used in 2005 and later XL883C, XL1200C Sportster Custom and selected 2005-2007 Softail. Rim and spokes must be ordered separately.

- 789929** Chrome Profile rim, 3.00x16" (OEM 43440-05A)
- 795058** Chrome spoke kit for 16" Profile wheel rim and spool style hub (OEM 43052-05A)

01
HELMETS,
LUGGAGE,
AUDIO & MORE

02
SEAT

03
EXHAUST

04
ELECTRIC
& LIGHT

05
ENGINE
ELECTRICS

06
INTAKE

07
ENGINE

08
PRIMARY

09
TRANSMISSION

10
FINAL DRIVE

11
WHEELS &
TIRE

12
BRAKE

13
FOOT
CONTROL

14
HANDLEBAR

15
FRONT
SUSPENSION

16
CHASSIS/
FRAME
& SHOCKS

17
FENDER
& STRUTS

18
GAS TANK &
INSTRUMENT

19
OIL TANK, FILTER
& LINE

20
FASTENERS

21
MIRROR

22
WINDSHIELD

23
OIL, CHEMICALS
& TOOLS

24
TECHTIPS &
CROSS REF
> ZPN

25
CROSS REF
ZPN > PAGE

26
ALPHABETICAL
INDEX



CHROME WHEEL RIMS

Zodiac has the finest quality rims available. They are manufactured by a factory that has years of experience which enables them to develop a high quality rim which can compete with any other manufacturer and outclass them. Because of proper polishing and chroming, we can offer you a show- Chrome rim with a deep blue finish. All rims are for inner tubes with a metal center valve or rubber side valve as indicated.

Note: Harley changed the rim design and spoke pattern in 2005 without changing the part numbers for the rims. The 2005-up design rims require longer spokes, reason why they refer to new part numbers for the spokes.



Drop center rims

- 702109** Rim 4.50x15" 40 holes, stock thru 2004 spoke pattern, steel center valve
- 236948** Rim 3.00x16, WL & WLA front with hub with integrated brake drum, stock spoke pattern, rubber side valve (OEM 43009-40)
- 744130** Rim 3.00x16" 40 holes, stock thru 2004 spoke pattern, rubber side valve, Imported (OEM 43007-40, 43085-81, 43085-97)
- 236940** Rim 3.00x16" 40 holes, stock thru 2004 spoke pattern, rubber side valve, Samwel (OEM 43007-40, 43085-81, 43085-97)
- 702099** Rim 3.00x16" 40 holes, stock thru 2004 spoke pattern, steel center valve (OEM 43085-81)
- 702104** Rim 3.00x16" 40 holes, stock 2005-up spoke pattern, steel center valve (OEM 43085-97)
- 702112** Rim, 3.50x16" 40 holes, stock thru 2004 spoke pattern, steel center valve, can also be used to replace OEM 43007-40, 43085-81, 43085-97)
- 702107** Rim 3.50x16" 40 holes, stock 2005-up spoke pattern, steel center valve
- 789939** Rim 5.00x16" 40 holes, stock 2005-up spoke pattern, steel center valve (OEM 41445-09)
- 702110** Rim 5.50x16" 40 holes, stock thru 2004 spoke pattern, steel center valve
- 702113** Rim 6.00x16" 40 holes, stock thru 2004 spoke pattern, steel center valve

- 702111** Rim 6.00x16" 40 holes, stock 2005-up spoke pattern, steel center valve
- 702108** Rim 3.50x17" 40 holes, stock thru 2004 spoke pattern, steel center valve
- 754303** Rim 4.50x17" 40 holes, stock 2005-up spoke pattern, steel center valve (OEM 40843-06)
- 789471** Rim 6.00x17" 40 holes, stock 2005-up spoke pattern, steel center valve (OEM 41440-08)
- 702105** Rim 3.00x18" 40 holes, stock thru 2004 spoke pattern, steel center valve
- 236942** Rim 3.00x18" 40 holes, stock thru 2004 spoke pattern, steel center valve, exact replica of OEM 43005-35)
- 236947** Rim 3.00x18", WL & WLA front with hub with integrated brake drum, stock spoke pattern, steel center valve (OEM 43003-30)
- 702103** Rim 2.50x19" 40 holes, stock thru 2004 spoke pattern, steel center valve
- 789940** Rim 2.50x19" 40 holes, stock 2005-up spoke pattern, steel center valve (OEM 43001-06)
- 702102** Rim 2.15x21" 40 holes, stock thru 2004 spoke pattern, steel center valve
- 702114** Rim, 2.15x21" 40 holes, stock 2005-up spoke pattern (OEM 43662-80B)
- 789949** Rim 3.50x21" 40 holes, stock thru 2004 spoke pattern, steel center valve



Custom Style Rims with Rolled Edge

- 702100** Rim 1.85x19" 40 holes, stock thru 2004 spoke pattern, steel center valve
- 702101** Rim 1.85x21" 40 holes, stock thru 2004 spoke pattern, steel center valve
- 231622** Rim 2.15x21" 40 holes, stock thru 2004 spoke pattern, steel center valve



NEW

BLACK POWDER COATED RIMS

For the custom bike builder that wants that special "Cafe Racer" look, Zodiac offers glossy black powder coated rims in both original style drop center and a rolled edge custom style.

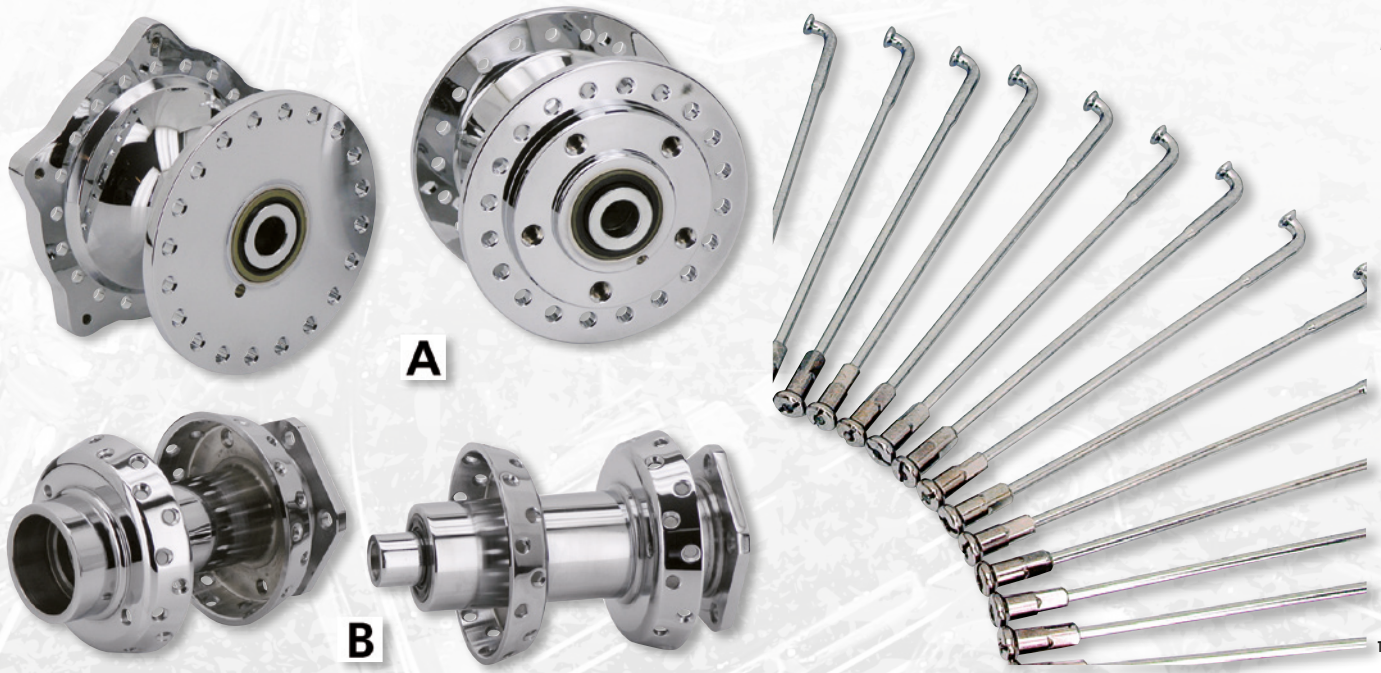
Note: Harley changed the rim design and spoke pattern in 2005 without changing the part numbers for the rims. The 2005-up design rims require longer spokes, reason why they refer to new part numbers for the spokes.

Drop center rims

- 234139** Rim 4.50x15" 40 holes, stock thru 2004 spoke pattern, steel center valve
- 237027** Rim 3.00x16", WL & WLA front with hub with integrated brake drum, stock spoke pattern, steel center valve (OEM 43008-40)
- 237026** Rim 3.00x18", WL & WLA front with hub with integrated brake drum, stock spoke pattern, steel center valve (OEM 43002-30)
- 231684** Rim 3.00x16" 40-holes, stock thru 2004 spoke pattern, steel center valve (OEM 43085-81)
- 232697** Rim 3.00x16" 40 holes, stock 2005-up spoke pattern, steel center valve (OEM 43017-07)
- 234310** Rim, 3.50x16" 40 holes, stock thru 2004 spoke pattern, steel center valve, can also be used to replace OEM 43007-40, 43085-81, 43085-97)
- 234134** Rim 3.50x16" 40 holes, stock 2005-up spoke pattern, steel center valve
- 234145** Rim 5.50x16" 40 holes, stock thru 2004 spoke pattern, steel center valve
- 234309** Rim 6.00x16" 40 holes, stock 2005-up spoke pattern, steel center valve
- 234135** Rim 3.50x17" 40 holes, stock thru 2004 spoke pattern, steel center valve
- 234133** Rim 3.00x18" 40 holes, stock thru 2004 spoke pattern, steel center valve
- 782997** Rim 2.25x18" 40 holes, stock thru 2004 spoke pattern, steel center valve, exact replica of OEM 43005-35)
- 232709** Rim 2.50x19" 40 holes, stock thru 2004 spoke pattern, steel center valve
- 232700** Rim 2.15x21" 40 holes, stock thru 2004 spoke pattern, steel center valve

Rolled edge rims

- 232702** Rim 1.85x19" 40 holes, stock thru 2004 spoke pattern, steel center valve
- 232703** Rim 1.85x21" 40 holes, stock thru 2004 spoke pattern, steel center valve



SPOKE KITS FROM ZODIAC

Zodiac offers the wheel builder a complete selection of top quality spokes in both polished Stainless Steel and Chrome plated carbon-steel sets. Combining outstanding strength with light weight and flexibility, the selection of spokes covers virtually every application from replacing original equipment to creating a complete new custom wheel. We even have spokes for those who want to convert their 19" or 21" Narrow Glide front end with aluminum disc hub into a 16" wheel. Packaged and sold per kit (to lace one wheel).

Note: Harley changed the rim design and spoke pattern in 2005 without changing the part numbers for the rims. The 2005-up design rims require longer spokes, reason why they refer to new part numbers for the spokes. **Kits contain 40 spokes and nipples. Order 2 sets for 80 hole rims, or 3 sets for 120 hole rims.**

Note: Stainless steel spokes and nipples are made from different types stainless material to minimize their seizing to each other, however, we strongly recommend the use of an anti-seize compound when assembling these spokes.

141183 Set of extra long spoke nipples 1/2" extended (42 pcs)

Kits contain 40 spokes and nipples

Chrome	Stainless Steel		OEM	
141140	141188	15" Spool hub for thru 2004 spoke pattern	-	(B)
141113	141184	16" Spool hub for thru 2004 spoke pattern	43032-40, 43033-40	(B)
234385	234386	16" Spool hub for 2005-up spoke pattern	43241-05	(B)
789950	-	16" Drop Center rim and 2009-up Touring rear hub	42018-09	(B)
789951	-	16" Smoothie rim and 2009-up Touring rear hub	41021-09	(B)
141283	-	16" Narrow Glide front hub, requires lacing of the wheel in a 3-cross pattern	-	(A)
141100	141101	Custom 32 hole 16" front wheel, shorter than stock length	-	(B)
141169	141174	17" Spool hub for thru 2004 spoke pattern	-	(B)
795058	-	17" Spool hub for 2005-up spoke pattern (OEM 43052-05A)	-	(B)
141170	141186	18" Spool hub for thru 2004 spoke pattern	43030-36, 43031-36	(B)
141114	141190	19" Spool hub for thru 2004 spoke pattern (may require long spoke nipples ZPN141183)	-	(B)
141115	141189	19" Spool hub for 2005-up spoke pattern	-	(B)
141162	141195	19" Narrow Glide front hub for thru 2004 spoke pattern	43024-73B, 43025-73B	(A)
141268	141269	19" Narrow Glide front hub for 2005-up spoke pattern	40761-05, 40762-05	(A)
141116	141191	21" Spool hub for thru 2004 spoke pattern	43057-80A	(B)
789933	-	21" Spool hub for 2005-up spoke pattern	43055-05	(B)
141118	141192	21" Narrow Glide front hub for thru 2004 spoke pattern	43020-87A & 43035-87A	(A)
-	701223	23" Spool hub for thru 2004 spoke pattern	-	(B)

01
HELMETS,
LUGGAGE,
AUDIO & MORE02
SEAT03
EXHAUST04
ELECTRIC
& LIGHT05
ENGINE
ELECTRICS06
INTAKE07
ENGINE08
PRIMARY09
TRANSMISSION10
FINAL DRIVE11
WHEELS &
TIRE12
BRAKE13
FOOT
CONTROL14
HANDLEBAR15
FRONT
SUSPENSION16
CHASSIS/
FRAME
& SHOCKS17
FENDER
& STRUTS18
GAS TANK &
INSTRUMENT19
OIL TANK, FILTER
& LINE20
FASTENERS21
MIRROR22
WINDSHIELD23
OIL, CHEMICALS
& TOOLS24
TECHTIPS &
CROSS REF
> ZPN25
CROSS REF
ZPN > PAGE26
ALPHABETICAL
INDEX



Front wheel hubs for Dyna

- A 147028** Dyna 1984-1999 except FXDWG Wide Glide. Alloy chrome for 3/4" wheel axle and single or dual disc, Genuine Zodiac (OEM 43619-84)
- C 147057** Dyna Wide Glide FXDWG 1991-1999. Chrome steel for 3/4" wheel axle and single disc, Genuine Zodiac (OEM 43672-84)
- C 789350** Dyna Wide Glide FXDWG 1991-1999. Chrome steel for 3/4" wheel axle and single disc, V-Twin Mfg. (OEM 43672-84)
- A 147150** Dyna 2000-2003 except FXDWG Wide Glide. Alloy chrome for single or dual disc, Genuine Zodiac. Order 2 of ZPN 723900 3/4" wheel axle bearings and a ZPN 789360 bearing spacer separately
- A 147150** Dyna 2004-2005 except FXDWG Wide Glide. Alloy chrome for 1" wheel axle and single or dual disc, Genuine Zodiac. Order 2 pcs. 1" wheel axle bearings ZPN 732901 and a ZPN 789385 bearing spacer separately
- A 789363** Dyna 2004-2005 except FXDWG Wide Glide. Alloy chrome for 1" wheel axle and single or dual disc, V-Twin Mfg. (OEM 43877-04)
- F 147151** Dyna Wide Glide FXDWG 2000-2005. Chrome steel for 3/4" wheel axle and single disc, Genuine Zodiac. Order 2 pcs. wheel bearings ZPN 732900 separately
- E 789361** Dyna Wide Glide FXDWG 2000-2005. Alloy chrome for 3/4" wheel axle and single disc, V-Twin Mfg. (OEM 43672-00, also replaces polished 43701-00)
- A 789329** Dyna FXDC & FXDL 2006-2007. Alloy chrome for 25mm wheel axle and single disc without ABS, V-Twin Mfg. (OEM 43243-06)
- E 789362** Dyna Wide Glide FXDWG 2006-2007. Alloy chrome for 1" wheel axle and single disc without ABS, V-Twin Mfg. (OEM 43555-06)
- A 789328** Dyna 2008-2017 except FXDWG Wide Glide. Alloy chrome for 25mm wheel axle, Narrow Glide forks and single disc without ABS, V-Twin Mfg.
- A 789326** Dyna 2012-2017. Alloy chrome for 25mm wheel axle, Narrow Glide forks and single or dual disc with ABS, V-Twin Mfg.
- E 789332** Dyna Wide Glide FXDWG 2008-2017. Alloy chrome for 25mm wheel axle and single disc without ABS, V-Twin Mfg.
- E 789325** Dyna Wide Glide FXDWG 2008-2017. Alloy chrome for 25mm wheel axle and single disc with ABS, V-Twin Mfg.
- A. 789484** Dyna 2000-2003 with single disc. Alloy chrome, V-Twin Mfg. (OEM 43610-00A)
- A. 785018** Dyna 2000-2003 with dual disc. Alloy chrome, V-Twin Mfg. (OEM 43619-00A)



FRONT AND REAR WHEEL HUBS

A wide selection of stock style hubs for most applications. Unless otherwise indicated all hubs come with bearings, seals and bearing spacer installed. Wheels for ABS applications feature the special ABS bearings, but not the ABS pick up sensor. Hubs for models thru 1999 take 2" inner diameter discs and pulleys. Hubs for 2000 to present take 2.22" inner diameter discs and pulleys. All have the standard Harley 5-hole bolt pattern on a 3 1/4" (82.6mm) circle.

Front wheel hubs for FX

- A 147012** FX, FXE, FXEF 1978-1983. Alloy chrome for 3/4" wheel axle and dual disc, Genuine Zodiac (OEM 43600-78)
- A 789352** FX, FXE, FXEF 1978-1983. Alloy chrome for 3/4" wheel axle and dual disc, V-Twin Mfg. (OEM 43600-78)
- A 147028** FXE & FXEF 1984-1985. Alloy chrome for 3/4" wheel axle and single or dual disc, Genuine Zodiac (OEM 43619-84)
- A 147012** FXR 1982-1983. Chrome steel for 3/4" wheel axle and dual disc, Genuine Zodiac (OEM 43600-78)
- A 789352** FXR 1982-1983. Chrome steel for 3/4" wheel axle and dual disc, V-Twin Mfg. (OEM 43600-78)
- A 147028** FXR (except FXLR) 1984-1999. Alloy chrome for 3/4" wheel axle and single or dual disc, Genuine Zodiac (OEM 43619-84)
- B 147022** FXWG 1980-1983. Chrome steel for 3/4" wheel axle and dual disc with 5/16" mounting holes, Genuine Zodiac (OEM 43663-80A)
- B 789353** FXWG 1980-1983. Chrome steel for 3/4" wheel axle and dual disc with 5/16" mounting holes, V-Twin Mfg.
- C 147057** FXWG 1984-1986. Chrome steel for 3/4" wheel axle and single disc, Genuine Zodiac (OEM 43672-84)
- C 789350** FXWG 1984-1986. Chrome steel for 3/4" wheel axle and single disc, V-Twin Mfg. (OEM 43672-84)

Front wheel hubs for Sportster

- A 147012** Sportster 1978-1983. Alloy chrome for 3/4" wheel axle and dual disc, Genuine Zodiac (OEM 43600-78)
- A 789352** Sportster 1978-1983. Alloy chrome for 3/4" wheel axle and dual disc, V-Twin Mfg. (OEM 43600-78)
- A 147028** Sportster 1984-1999. Alloy chrome for 3/4" wheel axle and single or dual disc, Genuine Zodiac (OEM 43619-84)
- A 147150** Sportster 2000-2007. Alloy chrome for single or dual disc, Genuine Zodiac. Order 2 pcs. 3/4" wheel axle bearings of ZPN 732900 and a ZPN 789360 bearing spacer separately
- A 789343** Sportster 2008 to present with 40 spoke front wheel. Alloy chrome for 25mm wheel axle and single disc without ABS, V-Twin Mfg.
- A 789343** Sportster 2008 to present with 40 spoke front wheel. Alloy chrome for 25mm wheel axle and single disc with ABS, V-Twin Mfg. Order 1 pcs. 702000 ABS wheel bearing separately
- A 789344** Sportster XL1200X Forty Eight 2010-2015 and XL1200C Custom 2011 to present with 40 spoke front wheel. Alloy chrome for 25mm wheel axle and single disc with ABS, V-Twin Mfg.
- D 789345** Sportster XL1200X Forty Eight 2010-2015 and XL1200C Custom 2011 to present with 40 spoke front wheel. Alloy chrome for 25mm wheel axle and single disc without ABS, V-Twin Mfg.
- A. 789484** Sportster 2000-2007 with single disc. Alloy chrome, V-Twin Mfg.



Front wheel hubs for Softail

- C 147057** FX Softail 1984-1999 except 1984-1996 FXSTS. Chrome steel for 3/4" wheel axle and single disc, Genuine Zodiac (OEM 43672-84)
- C 789350** FX Softail 1984-1999 except 1984-1996 FXSTS. Chrome steel for 3/4" wheel axle and single disc, V-Twin Mfg. (OEM 43672-84)
- C 746079** FXSTS Softail Springer 1988-1996. Chrome steel for 3/4" wheel axle and single disc, V-Twin Mfg. (OEM 43677-88)
- C 147063** FL Softail 1986-1999. Chrome steel for 3/4" wheel axle and single disc, Genuine Zodiac (OEM 43053-86)
- F 147151** Softail 2000-2007. Chrome steel for 3/4" wheel axle and single disc, Genuine Zodiac. Order 2 pcs. wheel bearings ZPN 732900 separately
- E 789361** Softail 2000-2007. Alloy chrome for 3/4" wheel axle and single disc, V-Twin Mfg. (OEM 43672-00, also replaces polished 43701-00)
- E 789332** Softail 2008-2017. Alloy chrome for 25mm wheel axle and single disc without ABS, V-Twin Mfg
- E 789325** Softail 2008-2017. Alloy chrome for 25mm wheel axle and single disc with ABS, V-Twin Mfg.

Front wheel hubs for Touring & Trike

- B 147060** FL & FLH 1973-1981. Chrome steel for 3/4" wheel axle and dual disc, Genuine Zodiac (OEM 43540-73A)
- B 789351** FL & FLH 1973-1981. Chrome steel for 3/4" wheel axle and dual disc, V-Twin Mfg. (OEM 43540-73A)
- B 147058** FLH & FLT 1982-1986. Chrome steel for 3/4" wheel axle and dual disc, Genuine Zodiac (OEM 40952-82A)
- B 147081** Touring 1987-1999. Chrome steel for 3/4" wheel axle and dual disc, Genuine Zodiac (OEM 43404-87)
- G 147152** Touring 2000-2007. Chrome steel for 1" wheel axle and dual disc, Genuine Zodiac. Order 2 pcs. 1" wheel axle bearings ZPN 723901 separately
- J 234149** Touring 2000-2007. Chrome alloy for 1" wheel axle and dual disc, V-Twin Mfg. (OEM 40988-00)
- J 789330** Touring 2008. Chrome alloy for 25mm wheel axle and dual disc without ABS, V-Twin Mfg.
- H 789331** Touring & Trike 2009 to present. Chrome alloy for 25mm wheel axle and dual disc without ABS, V-Twin Mfg.
- H 789327** Touring & Trike 2009 to present. Chrome alloy for 25mm wheel axle and dual disc with ABS, V-Twin Mfg.

Rear wheel hubs for Sportster

- B 147026** Sportster K, KH, XL, XLH & XLCH 1955-1978, V-Twin Mfg. (OEM 41017-55, 41017-66)
- B 147056** Sportster 1979-1981, Chrome steel for 3/4" wheel axle, V-Twin Mfg. (OEM 43457-79)
- B 147058** Sportster 1982-1984. Chrome steel for 3/4" wheel axle, Genuine Zodiac (OEM 40952-82A)
- B 147059** Sportster 1986-1999. Chrome steel for 3/4" wheel axle, Genuine Zodiac (OEM 40976-86)
- B 789366** Sportster 1986-1999. Chrome steel for 3/4" wheel axle, V-Twin Mfg. (OEM 40976-86)
- G 147153** Sportster 2000-2004. Chrome steel for 3/4" wheel axle, Genuine Zodiac. Order 2 pcs. wheel bearings ZPN 732900 separately (OEM 40976-00)
- J 789354** Sportster 2000-2004. Alloy chrome for 3/4" wheel axle, V-Twin Mfg. (OEM 40976-00)
- G 147153** Sportster 2005-2007. Chrome steel for 1" wheel axle, Genuine Zodiac. Order 2 pcs. wheel bearings ZPN 732901 separately
- J 789333** Sportster 2005-2007. Alloy chrome for 1" wheel axle, V-Twin Mfg. (OEM 41053-02)
- J 789341** Sportster 2008 to present. Alloy chrome for 25mm wheel axle, no ABS, V-Twin Mfg.
- J 789342** Sportster 2015 to present. Alloy chrome for 25mm wheel axle, with ABS, V-Twin Mfg.

Rear wheel hubs for FX

- B 147060** FL & FLH 1973-1981. Chrome steel for 3/4" wheel axle and dual disc, Genuine Zodiac (OEM 43540-73A)
- B 789351** FX 1973-1984. Chrome steel for 3/4" wheel axle, V-Twin Mfg. (OEM 43540-73A)
- B 147059** FXR 1986-1994. Chrome steel for 3/4" wheel axle, Genuine Zodiac (OEM 40976-86)
- B 789366** FXR 1986-1994. Chrome steel for 3/4" wheel axle, V-Twin Mfg. (OEM 40976-86)
- B 147058** FXWG 1982-1984. Chrome steel for 3/4" wheel axle, Genuine Zodiac (OEM 40952-82A)

Rear wheel hubs for Dyna

- B 147059** Dyna 1991-1999. Chrome steel for 3/4" wheel axle, Genuine Zodiac (OEM 40976-86)
- B 789366** Dyna 1991-1999. Chrome steel for 3/4" wheel axle, V-Twin Mfg. (OEM 40976-86)
- G 147153** Dyna 2000-2003. Chrome steel for 3/4" wheel axle, Genuine Zodiac. Order 2 pcs. wheel bearings ZPN 732900 separately
- J 789354** Dyna 2000-2003. Alloy chrome for 3/4" wheel axle, V-Twin Mfg.
- G 147153** Dyna 2004-2007. Chrome steel for 1" wheel axle, Genuine Zodiac. Order 2 pcs. wheel bearings ZPN 732900 separately
- J 789333** Dyna 2004-2007. Alloy chrome for 1" wheel axle, V-Twin Mfg. (OEM 41053-02)
- J 789334** Dyna 2008-2017. Alloy chrome for 25mm wheel axle and no ABS, V-Twin Mfg.
- J 789339** Dyna 2012-2017. Alloy chrome for 25mm wheel axle and ABS, V-Twin Mfg.
- J 789340** Dyna Wide Glide 2011-2017. Alloy chrome for 25mm wheel axle and ABS, V-Twin Mfg.

Rear wheel hubs for Softail

- B 147059** Softail 1986-1999. Chrome steel for 3/4" wheel axle, Genuine Zodiac (OEM 40976-86)
- B 789366** Softail 1986-1999. Chrome steel for 3/4" wheel axle, V-Twin Mfg. (OEM 40976-86)
- G 147153** Softail 2000-2006. Chrome steel for 3/4" wheel axle, Genuine Zodiac. Order 2 pcs. wheel bearings ZPN 732900 separately
- J 789354** Softail 2000-2006. Alloy chrome for 3/4" wheel axle, V-Twin Mfg.
- J 789337** Softail 2007-2017. Alloy chrome for 25mm wheel axle and no ABS, V-Twin Mfg.
- J 789340** Softail 2011-2017. Alloy chrome for 25mm wheel axle and ABS, V-Twin Mfg.

Rear wheel hubs for Touring

- B 147060** FL & FLH 1973-1985. Chrome steel for 3/4" wheel axle, Genuine Zodiac (OEM 43540-73A)
- B 789351** FL & FLH 1973-1985. Chrome steel for 3/4" wheel axle, V-Twin Mfg. (OEM 43540-73A)
- K 147082** Touring 1986-1999. Chrome steel for 3/4" wheel axle and rear disc with 5" bolt circle, Genuine Zodiac (OEM 41020-86)
- G 147153** Touring 2000-2006. Chrome steel for 3/4" wheel axle, Genuine Zodiac. Order 2 pcs. wheel bearings ZPN 732900 separately
- J 789354** Touring 2000-2001. Alloy chrome for 3/4" wheel axle, V-Twin Mfg.
- J 789333** Touring 2002-2007. Alloy chrome for 1" wheel axle, V-Twin Mfg. (OEM 41053-02)
- J 789335** Touring 2008. Alloy chrome for 25mm wheel axle, V-Twin Mfg. Use with stock cush drive cup
- L 789336** Touring 2009 to present for 25mm wheel axle without ABS, V-Twin Mfg.
- L 789338** Touring 2009 to present for 25mm wheel axle with ABS, V-Twin Mfg.

01
HELMETS,
LUGGAGE,
AUDIO & MORE

02
SEAT

03
EXHAUST

04
ELECTRIC
& LIGHT

05
ENGINE
ELECTRICS

06
INTAKE

07
ENGINE

08
PRIMARY

09
TRANSMISSION

10
FINAL DRIVE

11
WHEELS &
TIRE

12
BRAKE

13
FOOT
CONTROL

14
HANDLEBAR

15
FRONT
SUSPENSION

16
CHASSIS/
FRAME
& SHOCKS

17
FENDER
& STRUTS

18
GAS TANK &
INSTRUMENT

19
OIL TANK, FILTER
& LINE

20
FASTENERS

21
MIRROR

22
WINDSHIELD

23
OIL, CHEMICALS
& TOOLS

24
TECHTIPS &
CROSS REF
> ZPN

25
CROSS REF
ZPN > PAGE

26
ALPHABETICAL
INDEX



1935-1972 WHEEL SOCKET SCREWS

Chromed high grade socket screws. Fits all models 1935 thru 1972 with interchangeable hubs.



Tools

- 238934** Tap, 3/8-20
- 740047** Colony USA made T-bar wheel lug wrench (OEM 94621-35)
- 780115** Samwel European made T-bar wheel lug wrench (OEM 94621-35)
- 781107** V-Twin Mfg. 1/2" drive socket
- 339009** Set of five chromed high grade socket screws, Genuine Zodiac (OEM 4026-35 & 43530-35A) Use with ZPN 781107 drive socket
- 782936** New Old Stock white plated socket screw, each (OEM 4026-35 & 43530-35A)



WHEEL & PULLEY BEARINGS

Stock replacement sealed ball bearings for 2000 to present Harley models. Our Eco Line bearings are made to DIN and SAE industry specifications under our strict Quality Control. Other bearings are produced by the OEM supplier.



234312 Narrow sealed bearing for aftermarket wheels with 3/4" axle (19.05 x 52 x 15mm)

732900 Eco Line wheel bearing for 3/4" axles on Sportster 2000-2007 front and 2000-2004 rear, Softail 2000-2006 front and rear, Softail Springer 2000-2007 front and rear, Dyna 2000-2003 front and rear, and FLH/FLT 2000-2001 rear (OEM 9267)

732901 Eco Line wheel bearing for 1" axles on Sportster 2005-2007 rear, FLH/FLT 2000-2007 front and 2002-2007 front and rear, V-Rod 2002-2007 front and rear, Dyna 2004-2007 front and rear (OEM 9247)

234754 SKF wheel bearing for 25mm axles on Softail 2007 to present front and rear (ex front 2007 FLSTC Springer), Street, Sportster, Dyna, FLH, FLT and V-Rod 2008-2017 front & rear. Does not fit on the sensor side of the wheel on ABS equipped models (OEM 9276)

702002 Eco Line Wheel bearing for 25mm axles on Softail 2007 to present front and rear (ex front on 2007 FLSTC Springer), Sportster, Dyna, FLH & FLT and V-Rod 2008-2017 front & rear. Does not fit on the sensor side of the wheel on ABS equipped models (OEM 9276)

702000 Eco Line wheel bearing for the ABS sensor side on 25mm (0.984") axles on all ABS equipped models 2008 to present (OEM 9252)

732903 OEM pulley bearing, fits 2008 to present FLH/FLT series (OEM 9285)

732904 OEM pulley bearing, fits 2008-2017 V-Rod (OEM 9254)

720148 Sealed bearing for 20mm front and rear wheel axles on all 2014 to present Indian (OEM 3414405)

NEW



TAPERED ROLLER WHEEL BEARINGS

Fits all Big Twin models front and rear 1973 thru 1999, Sportster 1973 thru 1999 front and 1979 thru 1999 rear. Is also used as swing arm bearing in 1958 thru 1984 4-speed Big Twins. Sold as a set of one bearing and one cone.

231440 Wheel bearing, cup and cone, Genuine Timken (OEM 9052+9033)

743738 Wheel bearing, cup and cone, All Balls (OEM 9052+9033)



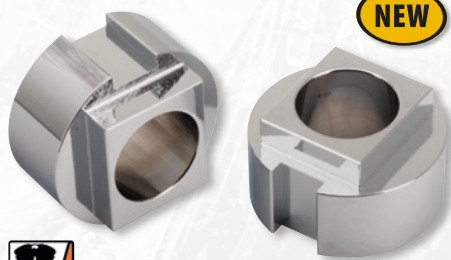
NEW



REAR AXLE KIT FOR 2009-UP TOURING

Rear axle (OEM 43000207) with adjuster cam (OEM 41819-02, 43000203), washer (OEM 11848), nut (OEM 8020) and E-clip (OEM 41229-08) as stock on all 2014 to present Touring can also be used as an upgrade for 2009-2013 Touring models.

339187 Rear axle kit (OEM 43000213)

**REAR AXLE COLLARS FOR HARDTAILS**

This axle collar set allows the use of regular, unstepped 3/4" (19.05mm) wheel axles in rigid frames and round style swingarms that have 7/8" (22.05mm) axle slots. With these 3/4" wide collars the axle adjusters do not push on the axle, but on the collar.

Fits standard 1937-1957 Big Twin and most aftermarket hardtail frames

789922 Rear axle collar set for rigid frames

NEW**NEW**

Colony

COLONY REAR AXLE ADJUSTERS

Exact OEM reproduction of the rear axle adjusters for 1936-1972 Big Twin models (OEM 41576-36 and 7800W). Sold in sets.

741815 Rear axle adjusters 1936-1972 Big Twin models, chrome (OEM 41576-36 & 7800W)

781329 Rear axle adjusters 1936-1972 Big Twin models, cad plated (OEM 41576-36 & 7800W)

781330 Rear axle adjusters 1936-1972 Big Twin models, parkerized (OEM 41576-36 & 7800W)

NEW

Colony

COLONY REAR CHAIN ADJUSTERS FOR WL

Exact copies from the OEM rear chain adjuster screws as used on all 1930-1952 WL, WLA & WLC models. Sold in pairs (OEM 41575-30).

781326 Rear chain adjuster screws, chrome

781327 Rear chain adjuster screws, white plated

781328 Rear chain adjuster screws, parkerized black

NEW**782956****782957**

MOTORCYCLE PARTS SADDLES & SADDLEBAGS

FRONT & REAR WHEEL AXLES FOR WLC

Reproductions from the wheel axles as found on the WLC 45CI solo models built for the Canadian Army.

782956 Rear wheel axle (OEM 3995-41A)

782957 Front wheel axle (OEM 4176-41)



AVON
TYRES

AVON ROADRIDER TIRES

The Avon Roadrider is ideal for mid-range bikes. A large contact patch offers excellent grip at all lean angles. The tire offers a 149 MPH (240 KM/H) speed rating across the whole range. The Roadrider is available in a comprehensive range of sizes, from modern to more traditional and gives a performance upgrade to classic and vintage motorcycles

293561 AVON Roadrider AM26 90/90-19 52V Front

293563 AVON Roadrider AM26 MT90-16 74V Rear

293653 AVON Roadrider AM26 100/90-19 57V Universal

01
HELMETS,
LUGGAGE,
AUDIO & MORE

02
SEAT

03
EXHAUST

04
ELECTRIC
& LIGHT

05
ENGINE
ELECTRICS

06
INTAKE

07
ENGINE

08
PRIMARY

09
TRANSMISSION

10
FINAL DRIVE

11
WHEELS &
TIRE

12
BRAKE

13
FOOT
CONTROL

14
HANDLEBAR

15
FRONT
SUSPENSION

16
CHASSIS/
FRAME
& SHOCKS

17
FENDER
& STRUTS

18
GAS TANK &
INSTRUMENT

19
OIL TANK, FILTER
& LINE

20
FASTENERS

21
MIRROR

22
WINDSHIELD

23
OIL, CHEMICALS
& TOOLS

24
TECHTIPS &
CROSS REF
> ZPN

25
CROSS REF
ZPN > PAGE

26
ALPHABETICAL
INDEX

01
02
03
04
05
06
07
08
09
10
11
12
13
14
15
16
17
18
19
20
21
22
23
24
25
26



METZELER

METZELER ME 888 MARATHON ULTRA TIRES

The ME 888 is evolved from the ME 880 series for ultra high mileage coupled with Metzeler performance and handling. Specifically designed for Custom Touring bikes. The latest in motorcycle tire technology offers consistent performance throughout the tire's life and outstanding high and low speed stability and smooth handling.

15" rear

737097 140/90B15 70H, Tubeless
737098 170/80B15 77H, Tubeless
737099 170/80B15 77H Wide White Wall, Tubeless

16" rear

737100 130/90B16 73H, Tubeless
737130 130/90B16 73H Wide White Wall, Tubeless
737131 140/90B16 77H, Tubeless
737132 140/90B16 77H Wide White Wall, Tubeless
737094 150/80B16 77H, Tubeless
737133 150/80B16 77H Wide White Wall
737172 150/80B16 77H Wide Orange Wall, Tubeless
737134 180/60R16 74H, Tubeless
737135 180/65B16 81H, Tubeless
737136 180/65B16 81H Wide White Wall, Tubeless
737137 MT90B16 74H, Tubeless
737138 MT90B16 74H Wide White Wall, Tubeless
737139 MU85B16 77H, Tubeless
737140 MU85B16 77H Wide White Wall, Tubeless
737184 240/50R16 84V, Tubeless

17" rear

737048 160/70B17 79V, Tubeless
737185 200/55R17 78V, Tubeless

18" Rear

737141 180/55ZR18 74W, Tubeless
737143 240/40VR18 79V, Tubeless
737036 260/40VR18 84V, Tubeless
737186 300/35VR18 87V, Tubeless
737188 280/35VR18 84V, Tubeless

16" front

737047 130/90-16 67H Wide White Wall, Tubeless
737049 130/90-16 67H, Tubeless
737095 MT90B16 72H, Tubeless
737050 MT90B16 72H Wide White Wall, Tubeless

17" front

737051 130/80B17 65H, Tubeless
737052 130/80B17 65H Wide White Wall, Tubeless
737187 140/75R17M 67V, Tubeless

18" front

737053 130/70B18 63H, Tubeless
737054 130/70R18 63H, Tubeless
737190 130/60VR-18M 60V, Tubeless

19" front

737055 100/90-19 57H, Tubeless
737056 100/90-19 57H Wide White Wall, Tubeless
737171 100/90-19 57H Wide Orange Wall, Tubeless

21" front

737057 MH90-21 54H, Tubeless
737058 MH90-21 54H Wide White Wall, Tubeless
737142 80/90x21-48H, Tubeless

23" front

737059 130/60B23 65H, Tubeless

26" front

737096 120/55R26 67H, Tubeless



D



E



ROADRUNNER AM20 FRONT AND AM21 REAR TIRES

Avon's Roadrunner tires have excellent braking performance in all conditions with their unique thread pattern providing extra drainage in wet weather. Strong pre-stressed casing ensures ride comfort and stability. The special contour promotes progressive lean-in to corners. The AM20 front tire can be paired with rear tires AM21 and AM23. Can also be used in combination with the Super Venom AM18.

Roadrunner AM20 front tires

	Tread type	Size	
237599	D	130/90Hx16	Tubeless
237601	D	90/90Hx19	Tubeless
237605	D	90/90Hx21	Tubeless

Roadrunner AM21 rear tires

	Tread type	Size	
293654	E	MT90x16 74H	Tubeless Reinforced

