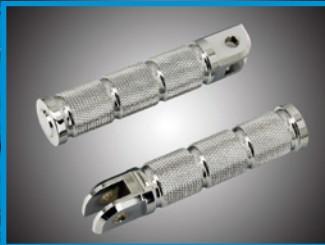


13



Shift & Foot Pegs 13-062



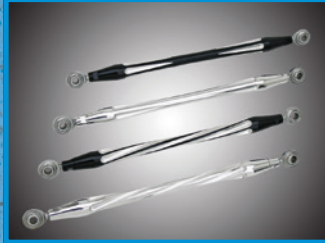
Peg Supports 13-062



Floorboards 13-063



Brake Pedals & Backing Plates 13-063



Shifter Parts 13-063



Rear Brake Master Cylinder 13-064



Forward Control 13-066

01
HELMETS,
LUGGAGE,
AUDIO & MORE

02
SEAT

03
EXHAUST

04
ELECTRIC
& LIGHT

05
ENGINE
ELECTRICS

06
INTAKE

07
ENGINE

08
PRIMARY

09
TRANSMISSION

10
FINAL DRIVE

11
WHEELS &
TIRE

12
BRAKE

13
FOOT
CONTROL

14
HANDLEBAR

15
FRONT
SUSPENSION

16
CHASSIS/
FRAME
& SHOCKS

17
FENDER
& STRUTS

18
GAS TANK &
INSTRUMENT

19
OIL TANK, FILTER
& LINE

20
FASTENERS

21
MIRROR

22
WINDSHIELD

23
OIL, CHEMICALS
& TOOLS

24
TECHTIPS &
CROSS REF
> ZPN

25
CROSS REF
ZPN > PAGE

26
ALPHABETICAL
INDEX



CIRO TWIN RAIL FOOTPEGS

Ciro's Twin Rail foot pegs are designed with comfort, style, and versatility in mind. Multiple mounting points and splined peg adapters allow you to find the perfect position whether you're using them as passenger pegs, highway pegs, or driver pegs. The refined styling complements that of your OEM boards or pegs for a seamless look.

- 754276** Chrome pegs without mounts. Order Ciro mounts separately
- 754279** Chrome pegs with regular OEM style male mounts
- 754289** Chrome pegs with 2018 to present Softail driver mounts
- 754281** Chrome pegs with 2018 to present Softail passenger mounts
- 754291** Chrome regular style male mounts only for Ciro pegs
- 754287** Chrome mounts only for Ciro pegs on 2018 to present Softail, driver
- 754282** Chrome mounts only for Ciro pegs on 2018 to present Softail, passenger
- 754277** Black pegs without mounts. Order Ciro mounts separately
- 754278** Black pegs with regular OEM style male mounts
- 754290** Black pegs with 2018 to present Softail driver mounts
- 754280** Black pegs with 2018 to present Softail passenger mounts
- 754288** Black driver mounts only for Ciro pegs on 2018 to present Softail
- 754283** Black passenger mounts only for Ciro pegs on 2018 to present Softail



NEW

NEW



PASSENGER PEG SUPPORTS FOR MILWAUKEE EIGHT SOFTAIL

Black supports are stock on all 2018 to present passenger seat equipped Milwaukee Eight Softail models and a must-have when you add a passenger seat to solo seat equipped models. All hardware is included but foot pegs must be ordered separately. Does not fit FXDR and FXDRS.

- 352236** Black left and right passenger peg support kit (OEM 50500744 & 50500769)
- 352235** Chrome left and right passenger peg support kit (OEM 50500771)



NEW



J.B. STYLE FOLDING ALUMINUM FOOT PEGS

These aluminum foot peg sets will add a High-Tech look to your motorcycle. The finishing touch for those who want to go just that little bit further than other bike builders. Foot peg set comes complete with 3/8"-24 UNF bolts. Fits most custom applications and all Harley-Davidson models except 2018 and later Softail.

- 789925** JB style Aluminum foot peg set with clevis and hardware



ROUGH CRAFTS FOOT & SHIFTER PEGS

The best in form and function. High traction knurled rubber provides excellent grip while the billet end cap enhances the motorcycles style.

- ARC400000** Standard male mount foot pegs, black, pair
- ARC400001** Standard male mount foot pegs, chrome, pair
- ARC400004** Driver foot pegs, 2018 to present Softail, black, pair
- ARC400005** Driver foot pegs, 2018 to present Softail, chrome, pair
- ARC400006** Passenger foot pegs, 2018 to present Softail, black, pair
- ARC400007** Passenger foot pegs, 2018 to present Softail, chrome, pair
- ARC400002** Shifter peg, black
- ARC400003** Shifter peg, chrome
- ARC500000** Handlebar grip set, Harley-Davidson with cable throttle, black
- ARC500001** Handlebar grip set, Harley-Davidson with cable throttle, chrome
- ARC500002** Handlebar grip set, Harley-Davidson with Throttle-By-Wire, black
- ARC500003** Handlebar grip set, Harley-Davidson with Throttle-By-Wire, chrome



FOOT PEG HARDWARE KIT FOR MILWAUKEE EIGHT SOFTAIL

Convenient kit with all parts that are easily lost when taking off the foot pegs. Contains two passenger foot peg detent springs (OEM 50500706), two balls (OEM 50500707) and two plates (OEM 50500705) and two driver foot peg return springs (OEM 50500703).

- 352239** 2018 to present Milwaukee Eight Softail foot peg hardware kit

NEW



CIRO ENGINE GUARD TOE RESTS

Ciro Toe Rests are a great addition to your Harley, Indian, or any motorcycle with 1 1/4" (32mm) engine guards. These elegant toe rests mount directly to the engine guard allowing you to keep your heel on the floorboard with a secure place for your toe on the engine guard. This is a comfortable and popular riding position because it allows you to stretch out while also keeping your feet close to the controls.

754292 Chrome engine guard toe rests, pair

754293 Black engine guard toe rests, pair



POLICE STYLE DRIVER FLOORBOARDS

Perfect reproduction of the floorboards as found on all 2016-2017 Police models, 2006-2017 Softail Deluxe, Fat Boy, Heritage, Cross Bones and Springer, 2012-2016 FLD Dyna Switchback and 2009-2018 Trikes. Have a chrome finish and come with the rubber pads installed. Sold in pairs.

Driver floorboards fit:

- 1980 to present Touring (except FLHTCUL, FLHTKL & FLHTCUL-TC)
- 2009 to present Trike
- 1986-2017 FL Softail models
- 2012-2016 FLD Switchback

057190 Pair chrome floorboards with rubber pads (OEM 50621-06)

057030 Pair replacement rubber pads (OEM 50614-06)

NEW



FLOORBOARD PADS FOR MILWAUKEE EIGHT SOFTAIL

Pads fit the stock footboards on 2018 to present FLHC & FLHCS Heritage and 2018 to present FLSL Slim.

057028 Pad set for left & right footboards (OEM 50500629)



SHIFTER SHAFT BUSHING FOR TOURING

Stock replacement shifter shaft bushing, fits all 1985-2000 Touring models. Two used per motorcycle.

789454 Shifter shaft bushing, 5-pack (OEM 33713-85A)



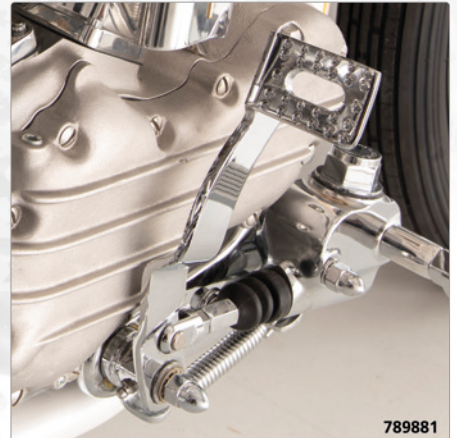
NEW



SOFTAIL FOOTBOARD STUD

Chrome plated duplicate from the left front OEM foot board stud as found on all 1986-1999 FL Softail models.

057071 Left front floorboard stud, chrome (OEM 50989-86)



789881



291230



2 YEARS WARRANTY

HYDRAULIC BRAKE PEDAL

Fits all Big Twins late 1959 thru 1969. Chrome finish.

291230 Chrome rear brake pedal, Genuine Zodiac (OEM 42402-59)

789881 Chrome rear brake pedal, V-Twin Mfg. (OEM 42402-59)

01
HELMETS,
LUGGAGE,
AUDIO & MORE

02
SEAT

03
EXHAUST

04
ELECTRIC
& LIGHT

05
ENGINE
ELECTRICS

06
INTAKE

07
ENGINE

08
PRIMARY

09
TRANSMISSION

10
FINAL DRIVE

11
WHEELS &
TIRE

12
BRAKE

13
FOOT
CONTROL

14
HANDLEBAR

15
FRONT
SUSPENSION

16
CHASSIS/
FRAME
& SHOCKS

17
FENDER
& STRUTS

18
GAS TANK &
INSTRUMENT

19
OIL TANK, FILTER
& LINE

20
FASTENERS

21
MIRROR

22
WINDSHIELD

23
OIL, CHEMICALS
& TOOLS

24
TECHTIPS &
CROSS REF
> ZPN

25
CROSS REF
ZPN > PAGE

26
ALPHABETICAL
INDEX



SHIFT LEVER 1991-2003 SPORTSTER

Shift lever fits all 1991-2003 Sportster models with mid-mount controls, not suitable for Forward Controls.
292083 Chrome shift lever (OEM 34606-90, 34615-94)
292086 Black shift lever (OEM 34606-90, 34615-94)



SHIFT LEVER 2004 TO PRESENT SPORTSTER

Shift lever fits all 2004 to present Sportster XL models with mid-mount controls, not suitable for Forward Controls.
783230 Chrome shift lever (OEM 34660-04A)



REAR BRAKE MASTER CYLINDERS WITH REMOTE RESERVOIR FOR SPORTSTER

These rear brake master cylinders come complete with the remote reservoir. Originally stock on 2004-2006 and 2007-2013 XL Sportster are also great for custom builds.

Fits 2004-2006 Sportster

- 144542** Black rear brake master cylinder assembly (OEM 42521-04)
- 144541** Chrome rear brake master cylinder assembly (OEM 42521-04)
- 769135** Rebuild kit, also fits OEM rear master cylinder, Daytona International (OEM 42810-04B)

Fits 2007-2013 Sportster XL models

- 144546** Black rear brake master cylinder assembly (OEM 42521-07)
- 144545** Chrome rear brake master cylinder assembly (OEM 42521-07)
- 769136** Rebuild kit, also fits OEM rear master cylinder, Daytona International (OEM 42810-07A)



FX STYLE REAR MASTER CYLINDER

Complete 5/8" bore rear master cylinder assembly for models with remote brake fluid reservoir, such as FX models 1983-early 1987 (except 1984 FXE). Can also be installed on 1982-early 1987 FXR, 1985-1986 FXWG and 1984-early 1987 FXST if plug on backside is removed for brake light switch installation. Plain aluminum finish.

- 790028** Rear brake master cylinder, V-Twin Mfg. (OEM 42446-82A & 42470-82B)

Replacement parts

- 144218** Rear master cylinder rebuild kit, 5/8" bore, Genuine Zodiac (OEM 42374-82B)



REAR BRAKE MASTER CYLINDER REPAIR KITS

Complete repair kits for OEM and stock replacement brake master cylinders include all internal parts needed for a complete rebuild. Can be used with DOT 3, DOT 4 or DOT 5 brake fluid but you should always stay with the same brake fluid type as the three types are chemically incompatible. Bore size is usually indicated a bit out of sight on the master cylinder. When not specified for ABS or non-ABS rebuild kits fits both. Please note that kits for models with master cylinders with a remote fluid reservoir can not be used for master cylinders with an integrated reservoir and vice versa.

Fits the 3/4" bore Wagner-Lockheed rear brake master cylinder on 1958-early 1979 FL models

- 148005** Rebuild kit, Genuine Zodiac (OEM 41762-58A with dust boot 41764-70)
- 769114** Rebuild kit, Daytona International (OEM 41762-58A with dust boot 41764-70)

Fits the 3/4" bore Kelsey-Hayes type rear brake master cylinder on 1979-1982 Sportster, late 1979-1984 FL, late 1979-1983 FX and late 1979-1985 FLT & FLHT

- 144064** Rebuild kit, Genuine Zodiac (OEM 42374-77B)
- 769115** Rebuild kit, Daytona International (OEM 42374-77B)

Fits the 5/8" bore rear brake master cylinder with integrated reservoir on 1982-early 1987 Sportster and early 1987 FLSTC Softail Heritage Classic

- 144217** Rebuild kit, Genuine Zodiac (OEM 42374-82A)
- 232707** Rebuild kit, Daytona International (OEM 42374-82A)
- 747488** Rebuild kit, Cycle Pro (OEM 42374-82A)

Fits the 5/8" bore rear brake master cylinder on 1982-early 1987 FXR and 1982-1990 Police Low Rider

- 747485** Rebuild kit, Cycle Pro (OEM 42382-82A)
- 234582** Rebuild kit, Eastern USA (OEM 42382-82A)
- 769122** Rebuild kit, Daytona International (OEM 42382-82A)

Fits the 5/8" bore rear brake master cylinder with remote reservoir on 1983-1985 FXSB, 1984 FXE-80, 1985 FXEF, 1983-1984 FXWG and 1984-1986 Softail

- 144218** Rebuild kit, Genuine Zodiac (OEM 42374-82B)

Fits the 5/8" bore rear brake master cylinder on 1986-1991 Touring and 1984-1992 FXRP

- 747486** Rebuild kit, Cycle Pro (OEM 42374-86)
- 769121** Rebuild kit, Daytona International (OEM 42374-86)

Fits the 3/4" bore rear brake master cylinder on 1987-2003 Sportster, 1987-1994 FXR, 1987-2017 Softail, 1991-2017 Dyna, 1987-2007 Touring and 2002-2005 V-Rod

148202 Rebuild kit, Genuine Zodiac (OEM 42382-87A)
747477 Rebuild kit, Cycle Pro (OEM 42382-87A)
744479 Rebuild kit, Daytona International (OEM 42382-87A)

Fits the 16mm bore rear brake master cylinder on all 2008 to present Touring

144355 Rebuild kit, Genuine Zodiac (OEM 42932-08A)
769128 Rebuild kit, Daytona International (OEM 42932-08A)

Fits the 14mm bore rear brake master cylinder on 2004-2006 Sportster

148205 Rebuild kit, Genuine Zodiac (OEM 42810-04B)
744482 Rebuild kit, Cycle Pro (OEM 42810-04B)
769135 Rebuild kit, Daytona International (OEM 42810-04B)

Fits the 1/2" bore rear master cylinder on 2007-2013 XL Sportster

148206 Rebuild kit, Genuine Zodiac (OEM 42810-07A)
744483 Rebuild kit, Cycle Pro (OEM 42810-07A)
769136 Rebuild kit, Daytona International (OEM 42810-07A)

Fits the 1/2" bore rear master cylinder on all 2014 to present Sportster

769134 Rebuild kit, Daytona International (OEM 41700097)

Fits the 17mm bore rear master cylinder on all 2006-2017 V-Rod

769146 Rebuild kit, USA (OEM 42883-06A)



REAR BRAKE MASTER CYLINDER CAP & DUST SEALS

Top cover gaskets and seals can be used with DOT 3, DOT 4 or DOT 5 brake fluid but you should always stay with the same brake fluid type as the three types are chemically incompatible.

Fits the remote rear brake reservoir on 1983-1986 FX, 1983-1986 FXG, 1982-1994 FXR and 1984-1999 FXST Softail

358086 Top cover seal, Genuine Zodiac (OEM 42455-80)

747489 Top cover seal, Cycle Pro (OEM 42455-80)

Fits the 3/4" bore Wagner-Lockheed master cylinder on 1958-1969 FL models

747487 Master cylinder dust boot, Cycle Pro (OEM 41764-58)

Fits the 3/4" bore Wagner-Lockheed master cylinder on 1970-1979 FL models

148023 Master cylinder dust boot, Genuine Zodiac (OEM 41764-70)

Fits the 3/4" bore Kelsey-Hayes master cylinder on 1980-1981 Sportster, late 1979-1982 FX, 1983 FXE and late 1979-1985 FLH & FLT

358090 Master cylinder dust boot, Genuine Zodiac (OEM 41764-79)

358086 Rubber top cover seal, Genuine Zodiac (OEM 41764-79)

747489 Top cover seal, Cycle Pro (OEM 42455-80)

Fits the rear brake master cylinder on 1999-2007 Touring, 2000-2017 Dyna & 2000-2017 Softail

144127 Master cylinder dust boot, Genuine Zodiac (OEM 40922-87)

744132 Rubber top cover seal, V-Twin Mfg. (OEM 42455-99)

NEW



Colony

SOFTAIL REAR BRAKE MASTER CYLINDER MOUNT KIT

Kit includes the since long obsolete special stud plus the bolt, washers and nuts to mount the rear brake master cylinder on 1987-1999 FLSTC Heritage Classic, FLSTF Fat Boy, FLSTN Heritage Special/Nostalgia and FLSTS Springer.

789948 Master cylinder mount kit, zinc plated (OEM 42301-87)

01	HELMETS, LUGGAGE, AUDIO & MORE
02	SEAT
03	EXHAUST
04	ELECTRIC & LIGHT
05	ENGINE ELECTRICS
06	INTAKE
07	ENGINE
08	PRIMARY
09	TRANSMISSION
10	FINAL DRIVE
11	WHEELS & TIRE
12	BRAKE
13	FOOT CONTROL
14	HANDLEBAR
15	FRONT SUSPENSION
16	CHASSIS/FRAME & SHOCKS
17	FENDER & STRUTS
18	GAS TANK & INSTRUMENT
19	OIL TANK, FILTER & LINE
20	FASTENERS
21	MIRROR
22	WINDSHIELD
23	OIL, CHEMICALS & TOOLS
24	TECHTIPS & CROSS REF > ZPN
25	CROSS REF ZPN > PAGE
26	ALPHABETICAL INDEX



BILLET ALUMINUM FORWARD CONTROL KITS FOR SOFTTAILS & 4 SPEED FX AND FL

These very complete and affordable forward control kits are machined from aircraft quality billet aluminum. Kits include a billet aluminum 3/4" bore Kelsey-Hayes type master cylinder, rubber band equipped foot- and shifter pegs. The brake pedal and shift lever ride on bronze bushings for smoother and anti-wear operation. These "Value for Money" kits are available as a stock replacement as well as 3" extended kits for long legged riders. Kits are available for all Softail models 1984 to present, as well as all 4 Speed FX and FL models from 1958 thru 1986. Available in either chrome plated or polished versions. Chrome plated forward controls feature a pad style brake pedal, the polished aluminum version features rubber band style brake pedals. Installation on FXSTD Deuce models requires the use of ZPN055011 spacer kit.

Note: 3" Extended kit is not recommended for use on FLSTF Fat Boy or FLSTC Heritage models due to fender clearance. On some 1980 to 1984 FXE models the right side-mounting tab might not be installed. These models require installing of the weld-on mounting tab ZPN233527.

Note: Shifter rod not included. For 3" extended order ZPN 110060 shifter rod separately.

Fits 1984 thru 1999 Softail and 1958 thru 1986 4-speed FX and FL

- 056150** Stock length, chrome, TÜV approved
- 056170** Stock length, polished, TÜV approved
- 056305** Stock length, black, TÜV approved
- 056302** 2" Extended, black, not approved
- 056151** 3" Extended, chrome, TÜV approved

Fits 2000 thru 2017 Softail, 2007 thru 2017 models require the separate purchase of a kick stand arm, NOT TÜV approved.

Note: Certain models use a clevis pin and clip to mount the stock kickstand. For these models, order a ZPN 291227 kickstop and a 5/16"-18 UNC bolt to mount our replacement kickstands.

- 056316** Stock length, chrome
- 056314** Stock length, polished
- 056312** Stock length, black

Kickstand arms for use on 2007 and later models

- 055030** Chrome with closed toe tip (OEM 20087-89A)
- 055058** Chrome with wire type toe tip (OEM 20087-89A)
- 055059** Chrome, under stock length for lowered bikes. Has wire type toe tip

Shifter rods

- 110060** Chrome, for 3" extended kits



PM "CONTOUR" BILLET ALUMINUM FORWARD CONTROLS

What were once simple blocks of billet aluminum have been machined into impossibly smooth and graceful arms with steel shafts that ride on a Teflon bearing. PM forward controls for Softail models come with the all new "Contour" master cylinder, featuring a 11/16" piston for the ultimate in braking power and feel, and has a concealed banjo fitting for an ultra clean look. The master cylinder design matches with the PM "Contour" handlebar controls. Shift and brake pegs are fully adjustable and have snap-in anti slip surface rubber inserts. The foot pegs fold for convenience and safety and also feature anti-slip rubber inserts. "Contour" forward controls come with all required hardware. Installation may require the separate purchase of a new brake line for proper fit. When converting from mid mount controls or floorboards you may also need a shifter and/or brake rod.

Fits 2002 thru 2017 V-Rod VRSCA & VRSCX models, uses stock shift linkage and stock rear master cylinder

722175 Polished

721744 Chrome

758104 Black

Fits 1986 thru 1999 Softail models, come complete with kickstand mounting bracket and uses stock kickstand.

721577 Polished

721738 Chrome

721739 Black Contrast Cut

Fits 2000 thru 2017 Softail models, uses stock kickstand on 2000 thru 2006 models. Later models require the separate purchase of a 2000 thru 2006 style kickstand such as our ZPN291304

721740 Chrome

721741 Black Contrast Cut

Fits 1991 thru 2017 Dyna models

740287 Polished

721742 Chrome

721743 Black Contrast Cut

Accessories

722176 Contour passenger pegs, polished

722173 Replacement rubbers for Contour peg (big)

722174 Replacement rubbers for Contour pedal (small)

721425 Rebuild kit for 11/16" bore

01
HELMETS,
LUGGAGE,
AUDIO & MORE

02
SEAT

03
EXHAUST

04
ELECTRIC
& LIGHT

05
ENGINE
ELECTRICS

06
INTAKE

07
ENGINE

08
PRIMARY

09
TRANSMISSION

10
FINAL DRIVE

11
WHEELS &
TIRE

12
BRAKE

13
FOOT
CONTROL

14
HANDLEBAR

15
FRONT
SUSPENSION

16
CHASSIS/
FRAME
& SHOCKS

17
FENDER
& STRUTS

18
GAS TANK &
INSTRUMENT

19
OIL TANK, FILTER
& LINE

20
FASTENERS

21
MIRROR

22
WINDSHIELD

23
OIL, CHEMICALS
& TOOLS

24
TECHTIPS &
CROSS REF
> ZPN

25
CROSS REF
ZPN > PAGE

26
ALPHABETICAL
INDEX

01
02
03
04
05
06
07
08
09
10
11
12
13
14
15
16
17
18
19
20
21
22
23
24
25
26



NEW



RICK'S FORWARD CONTROLS FOR MILWAUKEE EIGHT SOFTAIL
Bolt-on forward control kits from billet aluminum in stock, 2" or 4" longer versions for riders with long legs. Kits come complete with foot pegs, shifter peg, brake peg and rear brake master cylinder. Extended kits require a longer rear brake line that must be ordered separately.

Stock length forward control kits for 2018 to present Milwaukee Eight Softail

- 757461** Complete kit with Rubber band style pegs, polished
- 757462** Complete kit with Rubber band style pegs, black
- 757467** Complete kit with Grooved pegs, polished
- 757472** Complete kit with Grooved pegs, black

2" (5.1cm) extended forward control kits for 2018 to present Milwaukee Eight Softail

- 757464** Complete kit with Rubber band style pegs, polished
- 757469** Complete kit with Rubber band style pegs, black
- 757463** Complete kit with Grooved pegs, polished
- 757468** Complete kit with Grooved pegs, black

4" (10.2cm) extended forward control kits for 2018 to present Milwaukee Eight Softail

- 757466** Complete kit with Rubber band style pegs, polished
- 757471** Complete kit with Rubber band style pegs, black
- 757465** Complete kit with Grooved pegs, polished
- 757470** Complete kit with Grooved pegs, black

