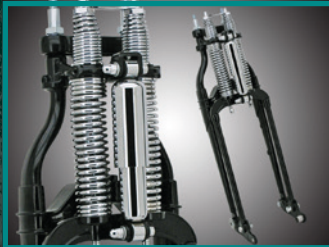




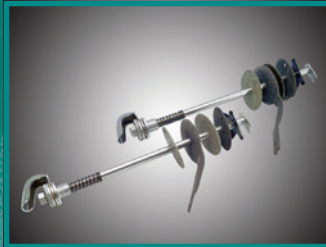
Front Forks

15-052



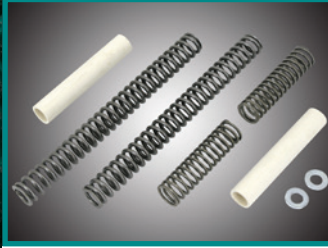
Springer Front Fork

15-050



Springer Fork Accessories

15-053



Fork Springs & Lowering Kits

15-052



Wide Glide Kits & Triple Trees

15-053



Slider Covers

15-054

15

01
HELMETS,
LUGGAGE,
AUDIO & MORE

02
SEAT

03
EXHAUST

04
ELECTRIC
& LIGHT

05
ENGINE
ELECTRICS

06
INTAKE

07
ENGINE

08
PRIMARY

09
TRANSMISSION

10
FINAL DRIVE

11
WHEELS &
TIRE

12
BRAKE

13
FOOT
CONTROL

14
HANDLEBAR

15
FRONT
SUSPENSION

16
CHASSIS/
FRAME
& SHOCKS

17
FENDER
& STRUTS

18
GAS TANK &
INSTRUMENT

19
OIL TANK, FILTER
& LINE

20
FASTENERS

21
MIRROR

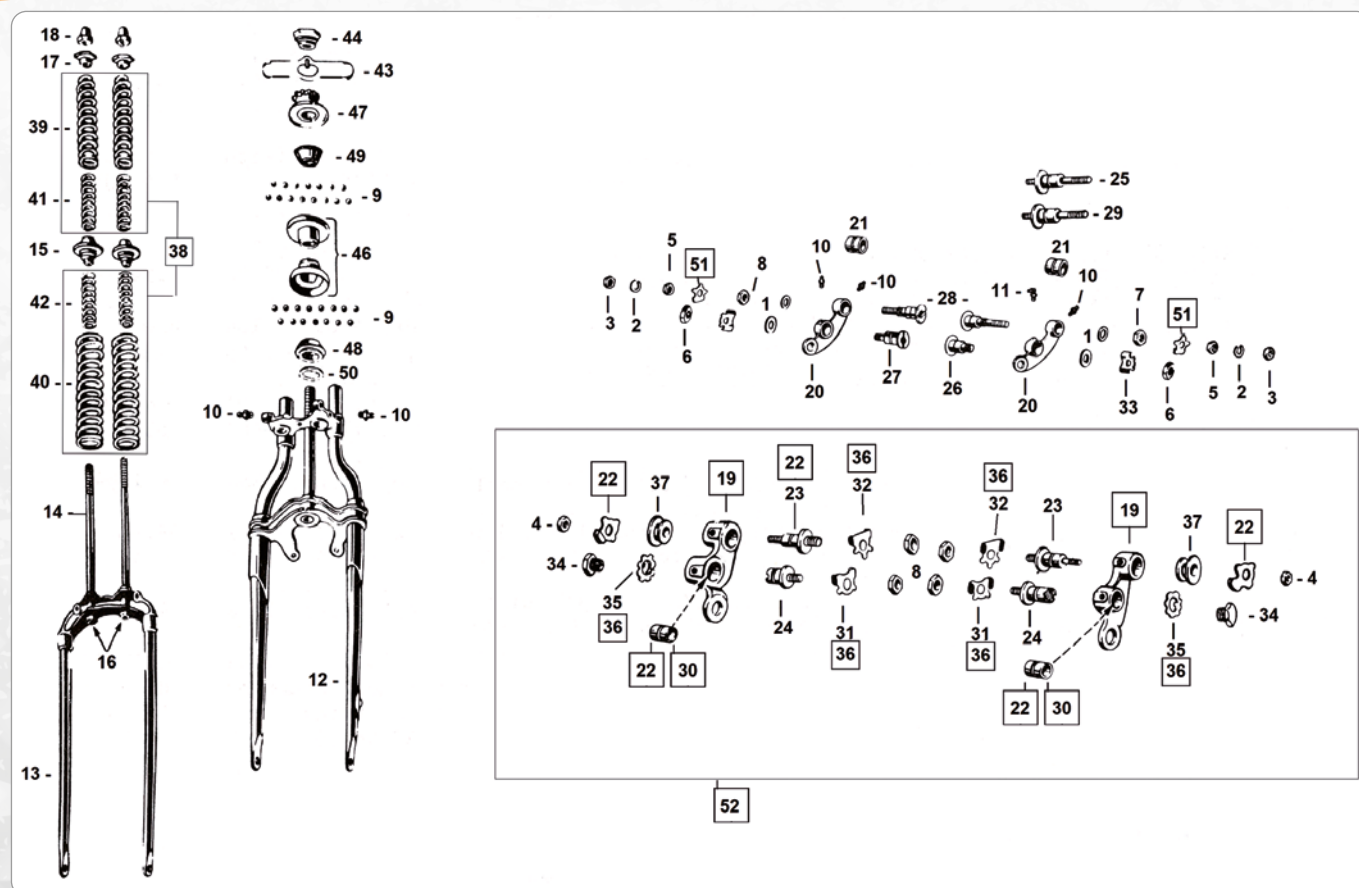
22
WINDSHIELD

23
OIL, CHEMICALS
& TOOLS

24
TECHTIPS &
CROSS REF
> ZPN

25
CROSS REF
ZPN > PAGE

26
ALPHABETICAL
INDEX



PARTS FOR OLD STYLE SPRINGER FORKS

Parts fit Springer forks in most 1930 thru 1952 45CI Solo, 1941 thru 1957 Servicers and 1941 thru 1948 Big Twins as indicated below. Unless indicated differently all are sold each.

Pos.	ZPN	Description	OEM
1.	-	Washer, 29/64"x 1 1/8"x 3/32"	6520
2.	-	Lock washer, 5/16"x9/16"x1/16"	7040
3.	-	Nut, 5/16-18	7748
4.	743987	Nut, 3/8-24x1/4"x 9/16" hex, UNF, dealer 50-pack	7789
4.	720020	Castle nut, 3/8-24x15/32"x 9/16" hex, UNF, set of 2 for models with front stand	7809
5.	-	Nut, 3/8-24x1/4"x21/64x9/16" hex, UNF	7793
6.	-	Nut, 7/16-20x3/8"x3/4" hex, UNF	7859
7.	745978	Nut, 7/16-20x3/8"x3/4" hex, UNF, set of 3.	7863
8.	720019	Nut, 1/2"-20x5/16"x13/16" hex, UNF, set of 4. 1931-1948 Big Twin, all 45CI and Servicers 1941-1957	7908
9.	057267	5/16" steel ball, 30 needed, dealer 10-pack	8860
9.	780094	5/16" steel ball, set of 30	8860
10.	238915	Grease fitting, straight, dealer 10-pack	9851
11.	769027	Grease fitting, 67 1/2" degrees, W & G models, dealer 10-pack	9852
12.	720005	Rear rigid fork, black, in-line, 1936-1945 Big Twin	45525-36
12.	720006	Rear rigid fork, black, offset, 1946-1948 Big Twin	45525-46
12.	769028	Rear rigid fork, black, 1940-1952 W, WL & WLA	45526-40
12.	769029	Rear rigid fork, black, all WLC models & 1941-1957 Servicer	45527-41
13.	720007	Front springer fork, black, 1936-1948 Big Twin, all WLC models and Servicers 1941-1957	45609-36
13.	720008	Front springer fork, chrome, 1936-1948 Big Twin, all WLC models and Servicers 1941-1957	45609-36C
13.	769030	Front springer fork, black, 1940-1957 45CI Solo except WLC	45610-40
14.	720010	Spring rod, with lower nut #16. Fits all 1936-1957 Springer forks	45641-36
15.	720011	Bushing, spring rod, fits all 1931-1957 Springer forks, white plated	45643-31
15.	760011	Bushing, spring rod, fits all 1931-1957 Springer forks, black	45643-45
16.	-	Spring rod lower nut	45645-30
17.	719998	Upper flat nut for spring rod, parkerized set 2, fits all Springer forks 1930-1957	45634-30
17.	720012	Upper flat nut for spring rod, chrome set 2, fits all Springer forks 1930-1957	45647-30
18.	719997	Top nut for spring rod top, parkerized set of 2, fits all Springer forks 1936-1957	45648-36
18.	720013	Top nut for spring rod top, chrome set of 2, fits all Springer forks 1936-1957	45648-36
19.	720015	Rocker plates, set of left and right. Fits all Big Twins 1930-1948, all WLC models and Servicers 1941-1957	45655-30 & 45658-30
20.	760010	Rocker plate with bushings #21, left or right, 1930-1957 45CI except WLC	45661-30
21.	760012	Rocker plate stud bushing, 1930-1952 45CI Solo except WLC, set of 4	45668-30
22.	741946	Set of rocker plate studs, locks & bushings, Colony. Fits Big Twins 1931-1948, all WLC models and Servicers 1941-1957	45671-36
23.	720016	Rear rocker plate stud, left or right. Fits Big Twins 1931-1948, all WLC models and Servicers 1941-1957	45672-31

Pos.	ZPN	Description	OEM
24.	720017	Front rocker plate stud, left or right. Fits Big Twins 1931-1948, all WLC models and Servicars 1941-1957	45673-31
25.	-	Towbar stud	45673-39
26.	760073	Front rocker plate stud, left, 1930-1952 45CI Solo except WLC	45674-30
27.	760074	Front rocker plate stud, right, 1930-1952 45CI Solo except WLC	45675-30
28.	760075	Rear rocker plate stud, left or right, 1930-1952 45CI Solo except WLC	45676-30
29.	760076	Rear rocker plate & front stand stud, left or right, 1930-1957 45CI Solo except WLC	45677-30
30.	720022	Rocker plate bushings, Servicar, 1942-1943 WLC, 1937-1948 Big Twin, Samwel, set of 4	45667-30
30.	741948	Rocker plate bushings, Servicar, 1942-1943 WLC, 1937-1948 Big Twin, Colony, set of 4	45667-30
31.	-	Front rocker plate stud nut lock. Fits Big Twin 1934-1948, all WLC models and Servicars 1941-1957	45680-30
32.	720018	Rear rocker plate stud nut lock, 45CI Solo, set of 6	45681-31
33.	760094	Rear rocker plate stud nut lock, Big Twin & Servicar, parkerized	45681-40
34.	720023	Rocker plate stud screw, set 2, fits Big Twins 1932-1948, all WLC models and Servicars 1941-1957	45682-32
35.	-	Rocker stud screw lock, Big Twin 1932-1948, all WLC models and Servicars 1941-1957	45683-32
36.	720018	Set of 6 lock plates, Samwel. Fits Big Twins 1934-1948, all WLC models and Servicars 1941-1957	45683-32, 45680-30, 45681-31
36.	741950	Set of 6 lock plates, Colony. Fits Big Twins 1934-1948, all WLC models and Servicars 1941-1957	45683-32, 45680-30, 45681-31
37.	720021	Rear stud spacer, set 2. Fits Big Twins 1941-1948, all WLC models and Servicars 1941-1957	45684-41
38.	719999	Fork spring set outer/inner parkerized. Fits all 1936-1957 Springer forks	46053-36
38.	720009	Fork spring set outer/inner chrome. Fits all 1936-1957 Springer forks	46053-36
39.	-	Upper fork spring	46055-30
40.	-	Cushion spring	46056-37
41.	-	Recoil bumper spring	46057-30
42.	-	Cushion spring buffer spring	46058-36
42.	-	Cushion spring buffer spring, Sidecar models	46059-39
43.	720028	Upper head cone lock plate	46550-36
43.	720030	Upper head cone lock plate, chrome	46551-46
43.	720027	Upper head cone lock plate, WLA green	2759-36N
44.	769058	Handlebar & cone clamp nut, 45CI, Colony, chrome	46560-40
44.	769059	Handlebar & cone clamp nut, 45CI, Colony, cad plated	46560-40
44.	769060	Handlebar & cone clamp nut, 45CI, Colony, parkerized	46560-40
44.	720044	Handlebar & cone clamp nut, Big Twin, Samwel, chrome	46561-36
44.	769061	Handlebar & cone clamp nut, Big Twin, Colony, cad plated	46561-36
45.	-	Set of parkerized head cups, cones & bearings, 1940-1952 45CI, 1953-1954 Servicar	48301-40
45.	782634	Set of parkerized head cups, cones & bearings, Big Twin	48325-36
46.	782607	Head cup, 45CI	48310-30
46.	760093	Head cup, 1937-1948 Big Twin, cad plated	48311-36
47.	720026	Head cone bearing, 1937-1948 Big Twin	48327-36
47.	780089	Upper head cone, 1940-up 45CI, parkerized	48335-40
48.	782637	Head cone race, Big Twin	48345-36
48.	-	Lower head cone, 45CI	48350-39
49.	780095	Head cone race, 45CI	48346-39
50.	-	Head cone bearing guard, Big Twin	48361-38
50.	-	Head cone bearing guard, 45CI	48363-40
51.	742524	Fender mount lock washers, pair	59140-34 & 59142-34
52.	720014	Complete rocker plate set. Includes bushings, bolts, washers, spacers, nuts and nut locks. Fits Big Twins 1936-1948, all WLC models and Servicars 1941-1957.	45655-30 + 45658-30 + 45671-36
53.	719996	Complete rebuild kit without rocker arms. Includes bushings, bolts, washers, spacers, nuts and nut locks. Fits Big Twins 1936-1948, all WLC models and Servicars 1941-1957	2638-36, 45671-36
-	782135	Cone nut wrench for ZPN 720026 (OEM 48327-36) and ZPN 780089 (OEM 48335-40)	

01
HELMETS,
LUGGAGE,
AUDIO & MORE

02
SEAT

03
EXHAUST

04
ELECTRIC
& LIGHT

05
ENGINE
ELECTRICS

06
INTAKE

07
ENGINE

08
PRIMARY

09
TRANSMISSION

10
FINAL DRIVE

11
WHEELS &
TIRE

12
BRAKE

13
FOOT
CONTROL

14
HANDLEBAR

15
FRONT
SUSPENSION

16
CHASSIS/
FRAME
& SHOCKS

17
FENDER
& STRUTS

18
GAS TANK &
INSTRUMENT

19
OIL TANK, FILTER
& LINE

20
FASTENERS

21
MIRROR

22
WINDSHIELD

23
OIL, CHEMICALS
& TOOLS

24
TECHTIPS &
CROSS REF
> ZPN

25
CROSS REF
ZPN > PAGE

26
ALPHABETICAL
INDEX



ZODIAC FRONT FORKS BY MUPO

Mupo developed the ultimate front suspension for American V-Twin motorcycles. Improved handling and damping characteristics are the benefits of these precision made units, which feature chrome-moly fork tubes, machined aluminum alloy sliders, hard anodized damper rods and smooth clear or black anodized top tubes and wheel axle clamps. Mupo Srl. Italy specially manufactures these fork legs for Zodiac. The triple trees are machined from a block of billet aluminum and are mirror shine polished after machining, and the black version is black anodized after polishing. Forks are

available with 0 degrees, 3 degrees, or 6 degrees raked trees. They feature integrated caliper brackets for 2000 to present style calipers designed for use with 11 1/2" disc brake rotors in dual set up. Can be used with most single or dual stock and aftermarket disc brake calipers.

The completely new designed and styled version of our Upside Down forks features:

- Smoothened 54mm aluminum top tubes

- 43mm Chrome-moly inner tubes
- Completely new developed damper units
- Individual fork spring pre-load adjustment
- Cylindrical shaped billet aluminum wheel axle clamps
- Hidden mount 3/4" (19.05mm) wheel axle
- Billet aluminum Wide Glide 9.85" (250mm) wide triple trees with 0 degree, 3 degrees, or 6 degrees rake
- Available in 31 1/2" or 33 3/4" length
- 5 1/2" Travel Complete Smoothglide Upside Down forks

Fork oil change:

For street use: light weight oil SAE 10.

For extreme heavy bikes, extreme or race use: SAE 12.5 or 15.

Drain forks completely, remove fork springs. Fit fork tubes exactly vertical in a vise and compress the fork fully. Remove all the air from the fork by moving the outer tube and the damper rod 10 to 20 times slowly up and down. Top up the compressed forks with fork oil to 100mm under the edge, decompress forks and install fork springs and top nuts.

Note: Handlebar damper rubbers and bushings must be shortened for correct fit.



HYPERPRO "LINK SYSTEM" SUSPENSION SPRINGS

Hyperpro has put years of extensive Research & Development on front forks, shocks, springs and suspension systems. As most of the time a linear spring is either too hard or too soft at the beginning and/or at the end, a so called one-step progressive spring is an improvement, but is still a compromise between comfort and safety. The sudden change from soft to hard is often felt as a disadvantage and can lead to "speed wobbles". Hyperpro came up with the noncompromising solution: the "Link-System Curve Design" for springs. With this construction a spring can be designed to satisfy all the demands of modern motorcycle technology. Hyperpro gives you a sensitive initial part of the stroke with a smoothly increasing spring rate for safety and anti-dive at the end of the stroke. Together with the use of the highest quality materials and precision machining this results in the best springs that money can buy. The fork springs are manufactured to DIN-2095, class 1 and are specially polished for minimal friction and carry a lifetime warranty against breaking. The shock springs provide superior roadholding & handling under all conditions and are thoroughly tested on a computerized dyno and on the bike in question. They are available with a black or purple polyester surface and the same technical standards as the fork springs. Front fork kits come complete with springs, one liter Hyperpro suspension-fluid, a small tube Hyperpro fork seal lubricant, and a professional manual with suspension tips.

Fits Sportster with 39mm forks

239490 Fits 883 & 1200 Sportster models 1988 thru 1991

239669 Fits 883 & 1200 Sportster models 1992-1996

782810 Fits 883 & 1200 Sportster models 1997-2003 except XL1200S

741609 Fits XL1200S Sportster models with preload adjusters 1998 thru 2003

239435 Fits Sportster models 2004 to present, except Custom, Low and Nightster

741602 Fits 2005 thru 2015 Sportster Custom models

741603 Fits 2005-2015 Sportster Low

782794 Fits 2008-2013 Sportster XL883N Iron

782876 Fits 2014-2015 Sportster XL883N Iron

782679 Fits 2016 to present Sportster XL883N Iron

769067 Fits 2016 to present Sportster Custom and XL883L Superlow

741645 Fits XL1200N Nightster 2007-2012

782871 Fits XL1200NS Iron 2018 to present

741668 Fits 2010 thru 2015 XL1200X Forty-Eight

741644 Fits 2012 thru 2016 XL1200V SeventyTwo

Fits Sportster with 43mm Upside Down forks

741646 Fits 2008 thru 2010 XR1200, except XR1200X

741648 Fits 2009 thru 2013 XR1200X

782724 Fits 2016 to present XL1200CX Roadster

Complete forks

0 degrees raked 3 degrees raked 6 degrees raked

749662	749663	749664	31 1/2" (80cm) long, clear ano forks, polished trees
749665	749666	749667	31 1/2" (80cm) long, black forks, polished trees
749668	749669	749688	31 1/2" (80cm) long, all black
749689	749690	749691	33 3/4" (86cm) long, clear ano forks, polished trees
749692	749693	749694	33 3/4" (86cm) long, black forks, polished trees
749695	749696	749697	33 3/4" (86cm) long, all black

Optional parts

749644	Fender bracket (set), polished
749645	Fender bracket (set), black anodized
735417	Bearing sleeve/spacer to use 3/4" axle with 25mm bearings, each

Replacement parts

Clear anodized	Black	
-	749646	Pair 29 1/2" (75cm) long inner tube & slider assemblies
749641	749640	Pair 31 1/2" (80cm) long inner tube & slider assemblies
749643	749642	Pair 33 3/4" (86cm) long inner tube & slider assemblies

721959	3/4" (19mm) diameter front wheel axle
749649	Fork seals, set of 2
749647	Complete rebuild kit with oil seals, dust seals, O-rings and guide bushings for two fork legs

Triple Tree sets

0 degrees raked	3 degrees raked	6 degrees raked	
234059	234060	234084	Polished
749400	749401	749402	Black Anodized



Fits Sportster with 49mm forks

782723 Fits 2016 to present XL1200X Forty Eight

Fits V-Rod with 43mm UpSide Down forks

741607 Fits 2006 thru 2007 VRSCR V-Rod

741608 Fits 2007 thru 2011 VRSCAW and VRSCDX V-Rod

741647 Fits 2009 thru 2017 VRSCF V-Rod Muscle

Fits V-Rod with 49mm forks

741604 Fits 2002 thru 2006 VRSCA V-Rod

741606 Fits 2004 thru 2005 VRSCB V-Rod

Fits FXR with 39mm forks

239491 Fits 1987 thru 1993 FXRS SP Convertible, FXRT, FXRP and 1991 thru 1993 FXDL

239492 Fits 1987 thru 1994 FXR, FXLR & FXRS

Fits Dyna with 39mm forks

741649 Fits 1995 thru 2005 FXD Super Glide & FXDL Low Rider

239433 Fits FXDX Super Glide Sport models 2000 thru 2005

741651 Fits 2005 FXDC Super Glide Custom

Fits Dyna with 41mm forks

741650 Fits FXDWG Dyna Wide Glide 1999-2005

239493 Fits FXDWG Dyna Wide Glide 1992-1998

741670 Fits 2012 thru 2016 FLD Switchback

Fits Dyna with 49mm forks

239434 Fits 2006-2010 FXD and 2006-2017 FXDB

741605 Fits 2006 thru 2013 FXDF Fat Bob models

741671 Fits 2014 thru 2017 FXDF Fat Bob models

741657 Fits 2007 thru 2014 FXDC Dyna Super Glide Custom

782870 Fits 2006-2013 FXDL Dyna Low Rider

741744 Fits 2014-2017 FXDL Low Rider except Low Rider S

741962 Fits 2016 thru 2017 FXDLS Low Rider S

741659 Fits 2006 thru 2017 FXDWG Dyna Wide Glide

Fits Softail with 41mm forks

239493 Fits Softail models 1984 thru 1999

741654 Fits 2000 thru 2008 FXST, FXSTB, FXSTC

741656 Fits 2000 thru 2006 FLST, FLSTC, FLSTF

741658 Fits 2007 thru 2017 FLS, FLSS, FLST, FLSTC, FLSTF, FLSTSFB, FLSTN, FLSTNSE

Fits Softail with 43mm UpSide Down forks

782796 Fits FXFB & FXFBS Fat Bob 2018 to present

782795 Fits FLSB Sport Glide 2018 to present

742951 Fits 2016 thru 2017 FXSE Pro Street Breakout

Fits Softail with 49mm forks

782804 Fits FLDE Deluxe 2018-2019

782873 Fits FLDE Deluxe 2020 to present

782872 Fits FLFB & FLFBS Fat Boy 2018 to present

782805 Fits FLHC & FLHCS Heritage Classic 2018 to present

782806 Fits FLSL Slim 2018 to present

782807 For 2018 FXBB Street Bob 2018 to present

782808 Fits FXLR Low Rider 2018 to present

782875 Fits FXLRS Low Rider S 2020 to present

710822 Fits 2013 thru 2017 FXSB & FXSBSE Breakout

782671 Fits 2018 to present FXBR & FXBRS Breakout

Fits Touring with 41mm forks

239432 Fits 1992-1998 FLHR & FLHRC Road King

741653 Fits 1999-2008 FLHR & FLHRC Road King, 1999-2001 FLHT, FLHTC, FLHTCU, FLTR & 2006-2008 FLHT, FLHTC, FLHTCU & FLTR

741663 Fits 2002-2005 FLHT, FLHTC, FLHTCU & FLTR

741664 Fits 2009-2013 FLHT, FLHTC, FLHTCU & FLTR

741667 Fits 2009-2013 FLHR & FLHRC Road King

Fits Touring with 49mm forks

741669 Fits all FLH and FLT series Touring models 2014 thru 2016

782874 Fits FLHP, FLHR, FLHRC & FLHRXS Road King 2017 to present

741704 Fits FLHT, FLHTCU, FLHTK, FLHTKSE, FLHTP, FLHX, FLHXS, FLHXSE, FLTRK, FLTRU, FLTRX, FLTRXS & FLTRXS 2017 to present

Fits stock rear shock absorbers

239494 Fits Softail models 1990 thru 1995

741343 Fits Softail models 1996 thru 1999

741660 Fits Softail models 2000 thru 2017



NEW



LOWER SPRING ROD NUTS FOR 1988-2009 SPRINGER

Set of two chrome acorn nuts that hold the spring rods to the spring fork on 1988-2009 FX Softail Springers and 1997-2007 FL Softail Springers.

758579 Chrome acorn nuts, pair (OEM 45567-88)



NEW



ODC FORK CARTRIDGE KITS

These kits convert your stock front forks to a state-of-the-art cartridge type fork with adjustable preload, compression and rebound for improved road holding at any speed, when braking and cornering.

763092 Fits the conventional 49mm forks on 2018 to present FXSB, FXBR & FXBRS Breakout, 2018 to present FLDE Deluxe, 2018 to present FLHC & FLHCS Heritage, 2018 to present FXLR & FXLRS Low Rider, 2018 to present FLSL Slim and 2018 to present FXBB & FXBBS Street Bob

763093 Fits the conventional 49mm forks on 2014 to present FLHP, FLHR, FLHRC & FLHRXS Road King

763094 Fits the conventional 49mm forks on 2014 to present Touring models with Batwing or frame mounted fairing

763095 Fits the 43mm UpSide Down forks on 2018 to present FLSB Sport Glide

763096 Fits the 43mm UpSide Down forks on 2018 to present FXFB & FXFBS Fat Bob and 2019-2020 FXDRS

NEW



Colony

COLONY LATE STYLE SPRINGER ROCKER REBUILD KIT

Kits contain all sixteen bolts, nuts and washers to mount the rockers. All parts have the Colony-famous top quality chrome finish.

788950 Fits 1997-2007 FLSTS Heritage & FLSTSC Heritage Classic

788951 Fits 1988-2009 FXSTS Springer, FXSTSB Bad Boy & FXSTSSE

NEW



RICK'S®
MOTORCYCLES



RICKS 7 DEGREES RAKED TRIPLE TREES FOR TOURING

TÜV approved bolt-in billet aluminum triple tree kits to give the correct rake and trail when you fit a 21", 23" or 26" front wheel. Fits all 2014 to present Touring models.

757438 Ricks Touring triple tree kit for use with a 21" or 23" front wheel

757439 Ricks Touring triple tree kit for use with a 26" front wheel

01
HELMETS,
LUGGAGE,
AUDIO & MORE

02
SEAT

03
EXHAUST

04
ELECTRIC
& LIGHT

05
ENGINE
ELECTRICS

06
INTAKE

07
ENGINE

08
PRIMARY

09
TRANSMISSION

10
FINAL DRIVE

11
WHEELS &
TIRE

12
BRAKE

13
FOOT
CONTROL

14
HANDLEBAR

15
FRONT
SUSPENSION

16
CHASSIS/
FRAME
& SHOCKS

17
FENDER
& STRUTS

18
GAS TANK &
INSTRUMENT

19
OIL TANK, FILTER
& LINE

20
FASTENERS

21
MIRROR

22
WINDSHIELD

23
OIL, CHEMICALS
& TOOLS

24
TECHTIPS &
CROSS REF
> ZPN

25
CROSS REF
ZPN > PAGE

26
ALPHABETICAL
INDEX



PROGRESSIVE suspension

PROGRESSIVE SUSPENSION DROP-IN FRONT LOWERING KITS

Forget everything you know about lowering motorcycle front ends, Progressive Suspension has completely changed the game. Their Drop-In Fork Lowering Kits have transformed a once messy and time-consuming install into a 30-minute cakewalk on most models. Pull up to two inches out of the front end of your bike without the hassle of disassembling the forks or even changing out the oil and the whole process can be done with basic tools. Shorter-than-stock main springs together with Progressive's secondary compensation springs make short work of lowering your front end. Drop-in kits allow you to lower your front end from stock up to 2" (5cm) and anything in between.

- 744793** Fits the 39mm forks on all 1988 to present XL Sportster models, except 2016 to present XL883N Iron, XL883L Superlow, XL1200C Custom, XL1200CX Roadster & XL1200V SeventyTwo
- 744989** Fits the 39mm forks on 2016 to present XL883N Iron, XL883L Superlow, XL1200C Custom, XL1200CX Roadster & XL1200V SeventyTwo
- 744794** Fits the 39mm forks on all 1991 thru 2005 FXD Dyna models
- 744796** Fits the 41mm forks on all 1984 thru 2017 FXST and FLST Softails and 1980 thru 2013 FLH and FLT series Touring models
- 744855** Fits 41mm forks in 2012 thru 2016 FLD Switchback
- 744795** Fits the 49mm forks on all 2006 thru 2017 FXD Dyna models and 2007 thru 2010 FXCW & FXCWC Rocker
- 744856** Fits UpSideDown (Inverted) forks in 2012 thru 2017 V-Rod, VRSCF Muscle & VRSCDX Night Rod
- 745047** Fits 49mm forks on 2018 to present FLDE Deluxe, FLFB & FLFBS Fat Boy, FLHC & FLHCS Heritage, FXBB & FXBBS Street Bob, FXBR & FXBRS Breakout and 2018-2020 FXLR Low Rider
- 745048** Fits 43mm UPSD (Inverted) forks on 2018 to present FLSB Sport Glide, FXFB & FXFBS Fat Bob and 2020 to present FXLRS Low Rider S

PROGRESSIVE suspension

PROGRESSIVE SUSPENSION FRONT FORK LOWERING KITS

Progressive Suspension used all their experience and knowledge to give you more comfort and control over your motorcycle and still enhance looks by lowering the front end. Kits feature progressively wound springs, include the required spacers and step-by-step installation instructions.

- 238935** Fits the 39mm forks on FXR, Dyna and Sportster, gives 2" lowering
- 745049** Fits the 41mm forks on 1949-1984 FL, 1984-2013 Touring, 1984-2017 Softail and 1993-2005 FXDWG Dyna Wide Glide. Can be installed as 1" or 2" lowering
- 741955** Fits the 49mm forks on 2002-2008 VRSCA, VRSCB and VRSCD-V-Rod, gives 1" lowering
- 742031** Fits the 49mm forks on 2006-2017 FXD, FXDB, FXDC, FXDF, FXDL & FXDWG Dyna and 2013-2017 FXSB & FXSBSE Breakout. Can be installed as 1" or 2" lowering
- 742047** Fits the 49mm forks on 2014 to present Touring models. Can be installed as 1" or 2" lowering
- 745046** Fits the 49mm forks on 2018 to present FLDE Deluxe, FLFB & FLFBS Fat Boy, FLHC & FLHCS Heritage, FLSL Slim, FXBB Street Bob, FXBR & FXBRS Breakout and FXLR Low Rider. Can be installed as 1" or 2" lowering



FORK BOOTS

Fork boots protect your front fork inner tubes from dirt and rubble, thus prolonging the life of the front fork oil seals. Available for most models and sold in pairs.

Stock replacement for the 35mm forks on 1954 thru 1970 Sportster

359025 Black, 115mm (4.52") (OEM 46001-54)

Stock replacement for the 39mm forks on 2007 to present Sportster Low and Iron, also fits most Sportster, Dyna and FXR models

359023 Black, 130mm (5.12") (OEM 45451-07)

Fits 39mm forks on Sportster, FXR and Dyna models

359027 Black, 175mm (6.89")

359029 Black, 190mm (7.48")

Fits 41mm forks on Touring, Softail and Dyna Wide Glide models

359020 Black, 210mm (8 1/4")

359021 Red, 210mm (8 1/4")

Fits 49mm forks on 2006-2017 Dyna, 2008-2011 Rocker, 2013 to present Breakout, 2014 to present Touring, 2002-2017 VRSCA, VRSCB & VRSCD V-Rod and 2016 to present XL1200X & XL1200XS Forty-Eight

359030 Black, 178mm (7")

359031 Black, 229mm (9")