



Front Fenders

17-002



Rear Fenders

17-009



Fender Accessories

17-020



Struts

17-022

17

01
HELMETS,
LUGGAGE,
AUDIO & MORE

02
SEAT

03
EXHAUST

04
ELECTRIC
& LIGHT

05
ENGINE
ELECTRICS

06
INTAKE

07
ENGINE

08
PRIMARY

09
TRANSMISSION

10
FINAL DRIVE

11
WHEELS &
TIRE

12
BRAKE

13
FOOT
CONTROL

14
HANDLEBAR

15
FRONT
SUSPENSION

16
CHASSIS/
FRAME
& SHOCKS

17
FENDER
& STRUTS

18
GAS TANK &
INSTRUMENT

19
OIL TANK, FILTER
& LINE

20
FASTENERS

21
MIRROR

22
WINDSHIELD

23
OIL, CHEMICALS
& TOOLS

24
TECHTIPS &
CROSS REF
> ZPN

25
CROSS REF
ZPN > PAGE

26
ALPHABETICAL
INDEX



CUSTOM NARROW FRONT FENDER FOR FX/FXR/XL
Custom narrow front fender fits all FX, FXR and XL 1973 up front forks with either 35 or 39mm fork tubes. Available in RAW and show-chrome finish. For use with 18", 19" or 21" rims (OEM 59031-83).

090088 Front fender, RAW finish

090092 Front fender, show-chrome finish



NARROW FRONT FENDER FOR WIDE GLIDE AND SOFTAIL MODELS

Custom style replacement fenders fit FXWG, FXST and FXSTC 1980 to present. Available in both RAW and show-chromed finish (OEM 59924-80).

090150 Custom Fender RAW

090154 Custom Fender chrome



FRONT FENDER FOR HARLEY NARROW GLIDE

Stock replacement front fender for FX-FXR-XL, fits 1973 and later. The unpainted fender comes complete with chrome brackets and necessary rivets (OEM 59007-73A & 59111-74).

091001 Front fender for Narrow Glide



MUSTANG RIBBED FRONT FENDER

This Mustang style steel front fender has a design that is inspired by Vintage American cars and motorcycles. Features a classic style ridge from front to rear. Comes with or without the mounting bracket to fit Wide Glide or Narrow Glide front forks with 18", 19" or 21" wheels. When you carefully bend the brackets of the fenders for Narrow Glide forks they will also fit a Mid Glide fork. Matching design custom style gas tanks can be found in Chapter 19.

090486 Front fender with Wide Glide fender bracket, raw steel

090487 Front fender with Wide Glide fender bracket, chrome

090586 Front fender with Narrow Glide fender bracket, raw steel

090489 Front fender without fender bracket, raw steel



CUSTOM SKIRTED FRONT FENDER WITH FLIP

Based on the early K model front fender, Zodiac updated this timeless classic fender to fit all 35mm and 39mm front forks 1973 up.

090126 Custom Skirted Front Fender



NARROW FRONT FENDER

Custom FXWG style narrow front fender. Fits FL front ends 1949 thru 1984 available in both RAW steel and show-chrome finish.

090059 Front fender RAW

090056 Front fender show-chromed



SHORT FRONT FENDER FOR FX AND XL

Custom front fender for Narrow Glide FX, FXR and Sportster models from 1973 to present with either 35 or 39 mm forks, bolts to the original mounting. The front tip has been cut back for a trim look. Comes complete with brackets. Show-chrome finish.

091011 Short chrome front fender for Narrow Glide



FRONT FENDERS FOR SOFTAIL "DEUCE"

Stock replacement front fenders for 2000 to present Softail "Deuce" models. Fenders are made from mild steel and come unpainted in your choice of chrome plated or raw fender bracket. Can also be used for custom application on bikes with a 21" front wheel but note that Deuce forks, contrary to most Harley models, have the fender mounting holes in-line with the forks.

090343 With chrome bracket (OEM 59876-00)

090344 With raw bracket (OEM 59876-00)



FRONT FENDER FOR FL MODELS

Perfect reproduction of 1954 to 1984 4 Speed dresser front fender. Fender is structural reinforced, also fits FLT and FLHT models thru 2013 when trim holes are drilled Raw finish (OEM 59000-58G).

090014 Front Fender for FL Models



NEW

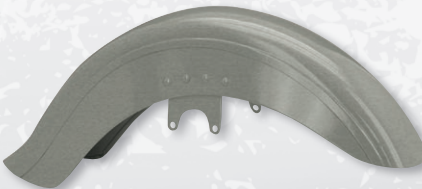


2014 TO PRESENT TOURING FRONT FENDERS

Exact replica from the stock front fenders on 2014 to present Touring & Trike models in raw steel. The fender for FLHR, FLHRC, FLHTCU, FLHTCUG, FLHTK and FLHTKL has pre-drilled fender trim holes. The fender for FLHRXS, FLHX, FLHXS, FLTRU, FLTRX, FLTRXS has exactly the same shape but has no fender trim holes. Also available in a smoother-than-stock version without rivets.

090363 2014 to present Touring front fender with trim holes (OEM 58900032)

090364 2014 to present Touring front fender without trim holes (OEM 58900009)



CUSTOM DUCKTAIL FRONT FENDER

For use on 4 Speed FLH models when a 19" or 21" front wheel has been installed. Fender comes with polished spacer blocks to complete the Custom look.

090192 Custom ducktail front fender



CUSTOM DUCKTAIL FRONT FENDER

This superb looking front fender is designed for use on the FXWG and FXST(C) and offers a greater weather protection than the stock fender. Great to use with the Heritage conversion when the stock 21" wheel is retained. Fender is complete with polished die-cast spacers. Fits FXWG and FXST 1980 thru 2017.

090193 Custom Ducktail front fender



NEW



REPLACEMENT FRONT FENDER FOR TOURING & TRIKE

Stock replacement raw steel fender has no trim holes.

Fits 2014 to present Touring and 2014 to present Trike

789449 Front fender, raw steel (OEM 58900032)



QUIKBOB STEEL FRONT FENDER FOR FXWG/FXST

The low, wide look is coming back again, and these Quickbob front fenders recreate that nostalgic look. Will fit 1980 thru 2017 FXWG, FXST and FXSTC models.

090203 Quickbob front fender



CUSTOM DUCKTAIL FRONT FENDER FOR SPRINGER SOFTAILS

Springer front fender styled after our other Ducktail front fenders. This steel fender will bolt directly on in place of the Original Equipment fender and provide you with better weather protection as well as more traditional appearance. Fits Springer Softail models from late 1988 thru 1992.

090223 Custom ducktail front fender



DRESSER STYLE FRONT FENDER FOR FXWG AND SOFTAILS

The 16" front wheel is the latest rage on Wide Glide front ends, and this high-quality metal fender is the perfect finishing touch. Fits FXWG, FXST FXDWG and FXSTC models from 1980 thru 2017. This zinc-chromate protected fender perfectly complements our Heritage conversion kit.

090195 Dresser style front fender



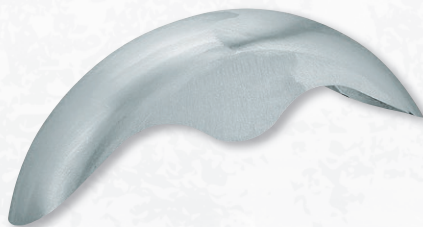
FRONT FENDER FOR HERITAGE SOFTAIL MODELS

A perfect replica of the Heritage Softail front fender. Available with pre-drilled holes for fender trim set and fender tip, or in a plain version. Fits all Heritage Softail models from 1986 thru 2017, except Springers.

090233 Plain, undrilled

090234 Stock replacement, pre-drilled (OEM 59129-86)

01	HELMETS, LUGGAGE, AUDIO & MORE
02	SEAT
03	EXHAUST
04	ELECTRIC & LIGHT
05	ENGINE ELECTRICS
06	INTAKE
07	ENGINE
08	PRIMARY
09	TRANSMISSION
10	FINAL DRIVE
11	WHEELS & TIRE
12	BRAKE
13	FOOT CONTROL
14	HANDLEBAR
15	FRONT SUSPENSION
16	CHASSIS/FRAME & SHOCKS
17	FENDER & STRUTS
18	GAS TANK & INSTRUMENT
19	OIL TANK, FILTER & LINE
20	FASTENERS
21	MIRROR
22	WINDSHIELD
23	OIL, CHEMICALS & TOOLS
24	TECHTIPS & CROSS REF > ZPN
25	CROSS REF ZPN > PAGE
26	ALPHABETICAL INDEX



ROUND SKIRTED "GROUND-POUNDER" FRONT FENDER

Super sleek looking heavy gauge steel, 6 3/8" (170mm) wide front fender with short and round skirt. Ideal for the Customizer as it comes undrilled to allow you to set it up the way you like it. Matching design Ground-Pounder rear fenders can be found in the rear fender section.

090304 Round Skirt Ground Pounder fender



SPRINGER FRONT FENDER FOR 45'S

Accurate, faithful reproduction of the original fender. Complete with braces and fender edge "reveal". Similar in appearance to ZPN090130 but made to fit 45's with Springer front forks (OEM 3702-40A).

090140 Springer front fender



LONG SKIRTED "GROUND-POUNDER" FRONT FENDER

Super sleek looking heavy gauge steel, 6 3/8" (170mm) wide front fender. Ideal for the Customizer as it comes undrilled to allow you to set it up the way you like it. Matching design Ground-Pounder rear fenders can be found in the rear fender section.

• A=93 cm, B=17 cm, IN=17 cm, L=65.5 cm, R=66 cm, T=1.2mm, W=17.3 cm

090303 Long skirt Ground Pounder fender



NEW



SOFTAIL SLIM FRONT FENDER

Exact replica from the stock front fender on 2012-2017 FLS Softail Slim and 2016-2017 FLSS Softail Slim S in raw steel. Also available in a smoother-than-stock version without rivets.

090367 Softail Slim & Slim S front fender (OEM 58900021)

090368 Softail Slim & Slim S front fender without rivets

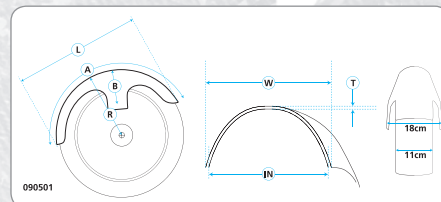


MILITARY STYLE FRONT FENDER FOR 45CI MODELS

Perfect reproduction of the genuine front mudguard on WLA and WLC 45CI military models. Can also be used on civilian 45CI models. The locks to mount them to the forks fit both civilian and military models and must be ordered separately.

745913 Front mudguard (OEM 3702-42M)

742524 Fender mount lock washers, pair (OEM 3732-34, 59140-34, 3732-34A & 59142-34)



FRONT FENDERS FOR 21" WHEELS

Made from 1.5mm raw steel. Fender is designed for custom applications (no mounting holes are drilled) allowing you to set it up the way you like it. Fenders are 110mm (4 1/2") wide and fit forks with 6 3/4" (17.2cm) between the fender mounts. Two styles available.

090501 [A.] Outlaw raw steel front fender. A=100cm, B=22cm, IN=10.5cm, L=71cm, R=36.5cm, T=1.2mm, W1=11cm, W2=18cm

090502 [B.] Gunfire raw steel front fender



SPRINGER FRONT FENDER FOR BIG TWINS

A faithful and accurate reproduction of the early Springer front fender. Fender is complete with braces, fits 61", 74" and 80" Big Twins 1937 thru 1948 (OEM 59000-36).

090130 Fender for Springer front fork



SOFTAIL FXSTS SPRINGER FRONT FENDER

Custom replacement fender for 1988 thru 2009 FXSTS Springer Softail models. Available raw with raw mounting bracket. Bracket is redesigned for looks and strength (OEM 59176-96).

090338 With raw bracket



DOUBLE G BAGGERS WRAPPER FRONT FENDERS

These Wrapper style front fenders are made in Holland from fiberglass in precision build moulds by Double G Baggers. Fenders are designed for use in Touring models, so will fit all Wide Glide front forks in Softail and Dyna models too. They have a white gel coat finish, ready for your painter's preparation but, as with every custom part, make sure to check and test fit prior to painting. Neither Double G Baggers nor Zodiac will be responsible for any damage sustained to paint jobs.



- 761132** For use with 26" wheels
- 761131** For use with 23" wheels
- 761130** For use with 19" and 21" wheels up to 120/70 tire
- 761172** For use with up to 5.50" wide 21" wheels
- 761129** For use with 16", 17" and 18" wheels



DOUBLE G "SWEET 17" FRONT FENDERS

These stylish front fenders are made in Holland from fiberglass in precision build moulds by Double G Baggers. Fenders are designed for use in Touring models, but will fit in all Wide Glide front forks in Softail and Dyna models too. Comes with a white gel coat finish, ready for your painter's preparation but make sure to check and test fit prior to painting. Zodiac will not be responsible for any damage sustained to paint jobs.

- 746976** Fits 23" wheels
- 746977** Fits 26" wheels

NEW



TOMMY & SON'S

TOMMY & SONS PRO FRONT FENDERS FOR TOURING

These fiberglass "Pro" front fenders are made in precision build moulds and have a white gel coat finish, ready for your painter's preparation.

Fits 1993 to present Touring

- 761176** For 16", 17" and 18" wheels
- 761175** For 21" wheels
- 761174** For 23" wheels
- 761173** For 26" wheels



746909 For use with 16", 17" and 18" wheels



TOMMY & SON'S

TOMMY & SONS FRONT FENDERS

These Wrapper style front fenders are made from fiberglass in precision build moulds by Tommy & Sons. Fenders are designed for use in Touring models, so will fit all Wide Glide front forks in Softail and Dyna models too. They have a white gel coat finish, ready for your painter's preparation but, as with every custom part, make sure to check and test fit prior to painting. Neither Tommy & Sons nor Zodiac will be responsible for any damage sustained to paint jobs.

NEW



FATBOY STYLE FRONT FENDER

This raw steel front fender was stock on 1990 thru 1996 FLSTF Fat Boy. Harley introduced a slightly re-shaped it fender on the 1997 models and used that thru 2006, but you can use this fender on almost any Softail with a 16" front wheel from 1985 thru 2006, except Spingars.

- 093107** Fat Boy style front fender (OEM 59139-89)



ARLEN NESS

ARLEN NESS BAGGER FENDER FOR 21", 23" AND 26" FRONT WHEELS

These fenders wrap your front wheel to look larger than life. Direct bolt-on design for 1987-2013 and 2014-up Touring models or 1986-up Softails with 41mm forks requires no fender spacers. Available in carbon composite or fiberglass construction.

Fits 1987 thru 2013 Touring models

- A06757** Carbon composite, 21"
- A06745** Fiberglass, 23"
- A06746** Carbon composite, 23"
- A06747** Fiberglass, 26"
- A06749** Carbon composite, 26"

Fits 2014 to present Touring models

- A06723** Carbon composite, 21"
- A06725** Fiberglass, 23"
- A06724** Carbon composite, 23"
- A06727** Fiberglass, 26"
- A06726** Carbon composite, 26"

1986-2017 FLST Softail, except 2007

- A06756** Carbon composite, 21"
- A06744** Carbon composite, 23"
- A06748** Carbon composite, 26"

01	HELMETS, LUGGAGE, AUDIO & MORE
02	SEAT
03	EXHAUST
04	ELECTRIC & LIGHT
05	ENGINE ELECTRICS
06	INTAKE
07	ENGINE
08	PRIMARY
09	TRANSMISSION
10	FINAL DRIVE
11	WHEELS & TIRE
12	BRAKE
13	FOOT CONTROL
14	HANDLEBAR
15	FRONT SUSPENSION
16	CHASSIS/FRAME & SHOCKS
17	FENDER & STRUTS
18	GAS TANK & INSTRUMENT
19	OIL TANK, FILTER & LINE
20	FASTENERS
21	MIRROR
22	WINDSHIELD
23	OIL, CHEMICALS & TOOLS
24	TECHTIPS & CROSS REF > ZPN
25	CROSS REF ZPN > PAGE
26	ALPHABETICAL INDEX



ZODIAC'S CUSTOM FRONT FENDERS BY CRUISESPEED

Cruisespeed fenders are the Ultimate in Style and perfection and are exclusively distributed by Zodiac. Cruisespeed's one-piece design fenders are made by craftsmen using 1.5mm and 2mm thick mild steel. They are smoother and have more beautiful flowing lines than any other fenders available today. No compromise was made when manufacturing these fenders. The steel fenders come with a Phosphate etched finish to help prevent corrosion and to give a good base for primers to adhere. The Cruisespeed fender range is available as "Smooth" or "Ridge Line", in a wide variety of styles and sizes. Matching design rear fenders are also available. For those that want to create their own individual design we have the "Custom" style, which is supplied untrimmed. All fenders come un-drilled for custom applications. When it comes to design and quality, Cruisespeed fenders are a class above, when it comes to economical pricing Cruisespeed will wipe out all other brands.

Reference:

- Narrow Glide front ends take up to 5" (127mm) wide fenders.
- Mid Glide front ends take up to 6" (152mm) wide fenders
- Wide Glide front ends take up to 7" (178mm) wide fenders
- 4 3/4" wide fender takes up to 110 wide tire
- 5 1/2" wide fender takes up to 130 wide tire
- 6 1/4" wide fender takes up to 150 wide tireOptional fender spacers to fit narrow fenders in Mid- and Wide Glide front ends are sold separately and can be found elsewhere in this chapter. Recommended wheel sizes are given for most fenders as a "best fit" indication. Always check fender fitment before painting.



Smooth Spartan for 16" thru 19" wheels
950109 4 3/4"
950110 6 1/4"



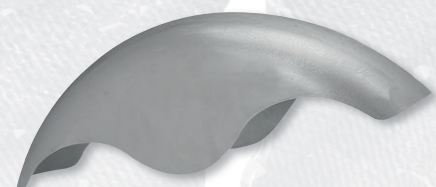
Smooth Cafe for 16" thru 19" wheels
950111 4 3/4"
950112 6 1/4"



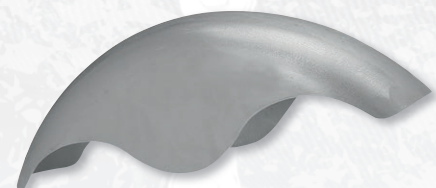
Smooth Savage for 16" thru 19" wheels
950113 4 3/4"
950114 6 1/4"



Smooth Mako for 16" thru 19" wheels
950115 4 3/4"
950116 6 1/4"



Smooth Spur for 16" thru 19" wheels
950117 4 3/4"
950118 6 1/4"



Custom for 21" wheels
960401 Custom for 21" wheels 4 1/4"



Smooth Custom Shorty for 16" thru 19" wheels
950105 4 3/4"
950106 6 1/4"



Smooth Nomad for 16" thru 19" wheels
950107 4 3/4"
950108 6 1/4"

ARLEN NESS

NEW

ARLEN NESS PROFILE STEEL FRONT FENDER

With its medium-length, curvaceous design this Wrapper-style front fender fits perfectly to your tire. Stamped from one piece 14-gauge (1.9mm) steel and comes with black anodized spacers for easy installation.

Fits 2013-2017 FXSB Breakout 2013-2017 and 2018 to present FXBR & FXBRs Breakout

A06758 Profile steel fender for 21" wheels

A06759 Profile steel fender for 23" wheels

Fits 2018 to present FXLR & FXLRS Low Rider and 2006-2017 Dyna, except FXDWG Wide Glide and FLD Switchback

A06768 Profile steel fender for 21" wheels



NEW

ARLEN NESS

ARLEN NESS PRO SHORT STEEL FENDERS

The unique design of these fenders allows a 21x3.5" wheel with a 120/70-21 tire to fit in 39mm or 49mm front forks for an amazing look. Fenders are stamped from 14-gauge (1.9mm) steel and come with black anodized billet brackets to make installation a snap.

Fits 49mm Mid Glide forks on 2006-2017 Dyna and 2018 to present Milwaukee Eight Softail

A06766 Pro Short steel fender for 49mm forks and 21x3.50" wheel

Fits 39mm Narrow Glide forks on 1988-2000 FXR, 1991-2005 Dyna and 1988 to present Sportster

A06769 Pro Short steel fender for 39mm forks and 21x3.50" wheel



Short for 21" wheels
960398 4 1/4"



Smooth Twenty-One Shorty for 21" wheels
960400 4 3/4"
960397 5 1/2"



Smooth Drifter for 18" and 19" wheels
950122 4 3/4"



Long Boy for 21" wheels
960402 4 1/4"



Smooth Twenty-One Longhorn for 21" wheels
960410 4 3/4"
960414 5 1/2"



Smooth Ducktail for 21" wheels
960412 5 1/2"



Saracen for 21" wheels
960403 4 1/4"
960415 5 1/2"



Smooth Untrimmed for 18" and 19" wheels
950119 4 3/4"



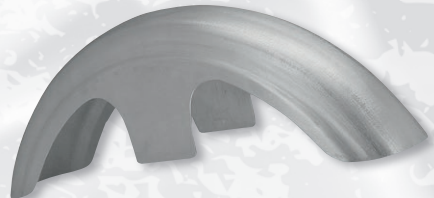
Ridge Line Custom Shorty for 16" thru 19" wheels
950138 4 3/4"
950139 6 1/4"



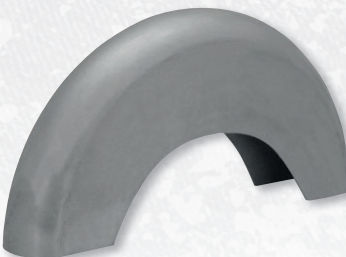
Stretched for 21" wheels
960405 4 1/4" for Wide Glide



Smooth Liberator for 18" and 19" wheels
950120 4 3/4"



Ridge Line Nomad for 16" thru 19" wheels
950140 4 3/4"
950141 6 1/4"



Untrimmed Twenty-One for 21" wheels
960409 4 3/4"
960413 5 1/2"



Smooth Rebel for 18" and 19" wheels
950121 4 3/4"



Ridge Line Spartan for 16" thru 19" wheels
950142 4 3/4"
950143 6 1/4"



Ridge Line Cafe for 16" thru 19" wheels
950144 4 3/4"
950145 6 1/4"

01	HELMETS, LUGGAGE, AUDIO & MORE
02	SEAT
03	EXHAUST
04	ELECTRIC & LIGHT
05	ENGINE ELECTRICS
06	INTAKE
07	ENGINE
08	PRIMARY
09	TRANSMISSION
10	FINAL DRIVE
11	WHEELS & TIRE
12	BRAKE
13	FOOT CONTROL
14	HANDLEBAR
15	FRONT SUSPENSION
16	CHASSIS/ FRAME & SHOCKS
17	FENDER & STRUTS
18	GAS TANK & INSTRUMENT
19	OIL TANK, FILTER & LINE
20	FASTENERS
21	MIRROR
22	WINDSHIELD
23	OIL, CHEMICALS & TOOLS
24	TECHTIPS & CROSS REF > ZPN
25	CROSS REF ZPN > PAGE
26	ALPHABETICAL INDEX

01
02
03
04
05
06
07
08
09
10
11
12
13
14
15
16
17
18
19
20
21
22
23
24
25
26



Ridge Line Mako for 16" thru 19" wheels
950149 6 1/4"



Ridge Line Drifter for 18" and 19" wheels
950155 4 3/4"



ZODIAC EXCLUSIVE COMPOSITE FRONT FENDERS

This long style front fender for 21" wheels provides over 180 degrees of coverage. Build exclusively for Zodiac by Metapol from fiberglass composite in a precision built mould. Designed to fit front forks with 7 3/8" (187mm) between the front forks.

722215 21" front fender



Ridge Line Savage for 16" thru 19" wheels
950146 4 3/4"
950147 6 1/4"



SLEEK LOOK FIBERGLASS FRONT FENDER

This fiberglass fender is designed for use on Wide Glide front ends with 16", 17" or 18" front wheels. Exclusively made for Zodiac by Metapol in precision made moulds. Fenders come in black gel-coat finish and are not drilled to allow you setting it up the way you like it.

722307 Sleek look front fender



Ridge Line Spur for 16" thru 19" wheels
950150 4 3/4"
950151 6 1/4"



ZODIAC EXCLUSIVE FIBERGLASS FRONT FENDERS

The Cafe-Racer look is back. Build exclusively for Zodiac by Metapol from fiberglass composite in a precision built mould. Designed to fit front forks with 7 3/8" (187mm) between the front forks. A perfect match with our Wide-Tail fenders and other Metapol fenders. Available in plain or with spoiler for use with 16" and 18" front wheels, and plain for 19" wheels.

For use with 16" & 18" wheels

236481 Front fender plain

For use with 19" wheels

236422 Front fender plain



Ridge Line Custom Longhorn for 18" and 19" wheels
950152 4 3/4"



FRONT FENDER FOR SMOOTHGLIDE UPSIDE DOWN FRONT FORK

Exclusive made for Zodiac by Metapol. Designed to fit Zodiac's GCB and Mupo "Smoothglide" Upside Down front forks. Will work with most 16", 17" or 18" front wheels. Precision molded from super strong fiberglass composite. This Smoothglide front fender is a perfect match with our Pro-Street and Wide-Tail rear fenders. Has plain black gelcoat finish.

236420 Smoothglide Upside Down front fender



Ridge Line Liberator for 18" and 19" wheels
950153 4 3/4"



For use with 16" & 18" wheels

236484 Front fender with spoiler



Ridge Line Rebel for 18" and 19" wheels
950154 4 3/4"



REAR FENDER HARLEY 45CI

A perfect detailed reproduction of the hinged rear fender originally used on 1941 thru 1949 45CI Solo models. Fender comes in raw steel, is complete with brackets and ready to bolt on to complete the restoration (OEM 3710-41/59609-41).

090046 Rear fender 45CI models



REAR FENDERS FOR EARLY SPORTSTER MODELS

Steel rear fenders with stock mounting holes in the sides for Sportster models from 1959 thru 1978. Available with or without taillight hole (OEM 59611-73A).

090005 Without taillight hole

092001 With taillight hole, fits 1973 thru 1978 models



BOBBED STEEL SPORTSTER REAR FENDER

Made from 1.5mm thick steel this Bobbed rear fender fits all 1982 thru 2013 Sportster models.

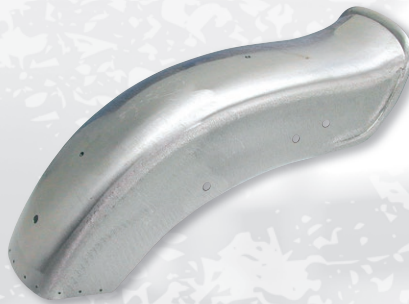
090549 Bobbed Fender



MILITARY STYLE REAR FENDER FOR 45CI MODELS

Perfect reproduction of the genuine rear mudguard on WLA and WLC 45CI military models. Comes complete with brackets.

745962 Rear mudguard with brackets (OEM 3710-42M)



FAT BOB REAR FENDER FOR SPORTSTERS

These exclusive steel fenders are guaranteed to make your bike the talk of the town, especially when used in combination with our Fat Bob or Stretched tank (see tank section). Features weld-in taillight bracket.

090210 Fits 1982 thru 1993 Sportster

090261 Fits 1994 thru 2003 Sportster



BOBBED REAR FENDER FOR SPORTSTER

Un-drilled raw steel fender for 1982 thru 2003 Sportster models. Fits with the stock fender struts.

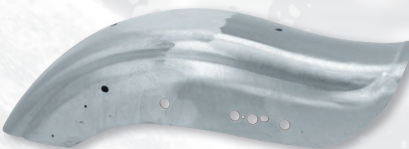
782131 Bobbed rear fender for 1982 thru 2003 Sportster



GENUINE ZODIAC BOBBED REAR FENDER FOR 45CI MODELS

Heavy gauge raw steel rear fender that bolts straight onto the frame of all 45CI Sidevalve models, giving those great Bob-style looks.

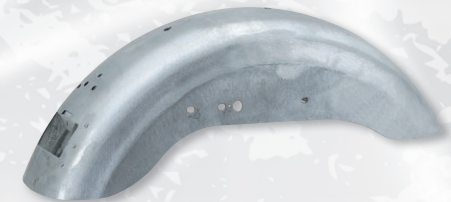
090049 Bobbed 45CI rear fender



BOBTAIL REAR FENDER FOR SPORTSTER

The steel Bobtail rear fender adds a pure muscle-style custom attitude to the rear end of your XL. Comes pre-drilled for easy installation. Has no license plate bracket installed, Fits 1998 thru 2003 Sportster models.

090087 Sportster Bobtail fender 1998 thru 2003. (OEM 60025-01)



STOCK STYLE REAR FENDER FOR SPORTSTER

Stock style raw steel rear fender, ideal for crash repairs. Fender comes pre-drilled and complete with the wire retention brackets and the internal fender bracket (OEM 59673-04). Fits all 2004 thru 2006 Sportster models. Also fits 2007 to present XL Sportster models when the cut-out for the ECM (Electronic Control Module) is made.

090407 XL rear fender (OEM 59847-04)

01	HELMETS, LUGGAGE, AUDIO & MORE
02	SEAT
03	EXHAUST
04	ELECTRIC & LIGHT
05	ENGINE ELECTRICS
06	INTAKE
07	ENGINE
08	PRIMARY
09	TRANSMISSION
10	FINAL DRIVE
11	WHEELS & TIRE
12	BRAKE
13	FOOT CONTROL
14	HANDLEBAR
15	FRONT SUSPENSION
16	CHASSIS/FRAME & SHOCKS
17	FENDER & STRUTS
18	GAS TANK & INSTRUMENT
19	OIL TANK, FILTER & LINE
20	FASTENERS
21	MIRROR
22	WINDSHIELD
23	OIL, CHEMICALS & TOOLS
24	TECHTIPS & CROSS REF > ZPN
25	CROSS REF ZPN > PAGE
26	ALPHABETICAL INDEX

01
02
03
04
05
06
07
08
09
10
11
12
13
14
15
16
17
18
19
20
21
22
23
24
25
26



FIBERGLASS REAR FENDERS FOR SPORTSTER

These custom style rear fenders are made from fiberglass and are easy to install. Just cut off the stock fender struts and remove the rear part of the stock rear fender and you add great looks to your Sporty. Available in smooth or ribbed in great looking ready-to-install metal flake colors or ready for your painter's preparation black gel coat. Fenders fit all 2004 to present XL Sportster models.

Smooth Style

- 742830** Gold metal flake
- 742831** Green metal flake
- 742832** Red metal flake
- 742833** Black pre-finish

Ribbed Style

- 742834** Gold metal flake
- 742835** Green metal flake
- 742836** Red metal flake



HINGED REAR FENDER FOR 1936-1957 HARLEY-DAVIDSON BIG TWIN

Perfectly shaped and detailed reproduction of the OEM "New Style" rear fender used on the 1949 thru 1957 Big Twins, but also fits 1936 thru 1948 Big Twin models. Complete with brackets ready to bolt on.

090013 New Style Big Twin rear fender (OEM 59604-39)



ONE PIECE REAR FENDER FOR FL MODELS

A perfect copy of 1980 thru 1984 one piece original equipment FL rear fender. Taillight section is undrilled to accept any style taillight. Fender strut mounting holes are drilled for easy mounting. Can also be used as replacement for the early style hinged rear fender as mounted on the early FL Swingarm frames (OEM 59601-79B and 59641-82A).

090286 One piece rear fender



SIDECAR FENDER

A very accurate reproduction of the Original Equipment fender for right hand side fitted side cars on Big Twin models from 1934 thru early 1967. The brackets and the fender are made from heavy-gauge steel.

090045 Side car rear fender (OEM 6226-34 & 87900-24A)



REAR FENDER FOR 1997-2008 TOURING

Raw steel rear fenders as stock on most 1997-2008 Touring models.

789460 OEM style with cut-out for taillight (OEM 59579-99)



FL/FLH HINGED REAR FENDER

Two piece hinged rear fender for all 4 Speed FL models 1958 thru 1984. Rear section is not drilled to accept your choice of taillight. Will also fit FX models 1973 thru 1984 if FL style fender struts are used and can be adapted to FXWG models. Small dent must be made in the front right lower corner to clear the battery (OEM 59604-65A).

090016 Hinged rear fender



789459 OEM style without cut-out for taillight

01	HELMETS, LUGGAGE, AUDIO & MORE
02	SEAT
03	EXHAUST
04	ELECTRIC & LIGHT
05	ENGINE ELECTRICS
06	INTAKE
07	ENGINE
08	PRIMARY
09	TRANSMISSION
10	FINAL DRIVE
11	WHEELS & TIRE
12	BRAKE
13	FOOT CONTROL
14	HANDLEBAR
15	FRONT SUSPENSION
16	CHASSIS/FRAME & SHOCKS
17	FENDER & STRUTS
18	GAS TANK & INSTRUMENT
19	OIL TANK, FILTER & LINE
20	FASTENERS
21	MIRROR
22	WINDSHIELD
23	OIL, CHEMICALS & TOOLS
24	TECHTIPS & CROSS REF > ZPN
25	CROSS REF ZPN > PAGE
26	ALPHABETICAL INDEX

NEW



REAR FENDER FOR 2009 TO PRESENT TOURING

Stock replacement rear fender as on 2009 to present American FLHR Road King and 2010 to present HDI International Export FLHTC, FLHTCU & FLHTK, 2013 FLTRX and many other 2009 to present Touring models. Fender comes pre-drilled for easy installation on the frame.

789448 Rear fender (OEM 59579-09)



CHOP IT ROUND STEEL RIGID REAR FENDERS

Nicely shaped round steel rear fenders for hardtail applications. Perfectly follow the shape of 16" and 17" tyres. Available smooth round and with a center rib and from 150 to 180mm wide.

Smooth top

760900 150mm wide

760901 160mm wide

760902 170mm wide

760903 180mm wide

NEW



REPLICA REAR FENDER FOR 1979-1984 FL

A close-to-perfect copy of the one piece rear fender as used on 1982-1984 FL models, featuring the turn signal mount indents and taillight bracket like stock. Can also be used to replace the OEM 59601-79B rear fender on 1979-1981 models.

789365 One piece rear fender (OEM 59641-82A)

Ribbed top

760904 150mm wide

760905 160mm wide

760906 170mm wide

760907 180mm wide



FAT BOB REAR FENDER FOR FXWG

Perfect duplicate of the Original Equipment fender. Stock replacement for FXWG 1980 thru 1986. Accepts our stock style as well as our custom taillight brackets (ZPN 160133 & 160204) (OEM 59904-80). Raw, oiled finish.

090021 Fender rear Fat Bob FXWG



FAT BOB STYLE REAR FENDER

Original Harley Fat Bob style rear fenders. Available in right and left hand cut away. 38" long, 6 3/4" wide and 5 1/2" deep.

090006 L/H rear fender RAW

090007 R/H rear fender RAW



QUICKBOB REAR FENDER FOR FX MODELS

Custom style "Quickbob" rear fender for the speedy conversion to that Fat Bob look. Fits stock FX (4 Speed) frame using the stock style fender struts (does not fit 1972 thru 1985 FXWG).

090055 Fender Quickbob rear



BOBBED REAR FENDER FOR FX MODELS

Custom style Bobbed rear fender for all FX models 1971 thru 1985, without taillight hole so any Custom after market taillight can be mounted (OEM 59584-73A).

090009 Bobbed rear fender



HINGED REAR FENDER FOR FX MODELS

A narrower version of our hinged FL style rear fender, designed to bolt between the stock fender struts of all 4 Speed FX models 1973 thru 1985. The hinged rear section allows easy access to the rear wheel for servicing. Looks great with our skirted front fenders. Rear section is undrilled to take the taillight of your choice. No additional parts or hardware required.

090098 Hinged rear fender



REAR FENDERS FOR FX MODELS

Perfect reproductions of the original equipment 4 Speed FX rear fenders from 1973 thru 1985. Available as a smooth style without light mount which allows you the use of a variety of taillight or with the 1973-up style taillight mount. Both models bolt directly to the OEM fender struts.

092000 With taillight mount (OEM 59682-78)

092008 Without taillight mount



FAT BOB FENDER AND TAILLIGHT KIT FOR FXR MODELS

A three piece kit that includes Fat Bob fender, Fat Bob taillight and Deluxe taillight bracket. Features flush mount taillight positioning. Bolts easily to all stock fender struts. Fits all FXR models from 1982 thru 1994.

090232 Fender kit



SENTRY REAR FENDER & STRUTS COMBO KIT

Great looking Cruisespeed rear fenders. These strutless "Sentry" style rear fenders have tapering struts for a slimmer look. Fits all 1984 thru 2017 stock Softail and aftermarket frames. Some aftermarket frames have a slightly narrower rear section. To make these fenders fit the narrower frames we include 2 x 3/8" thick spacers. Fenders come with a Phosphate etched finish to help prevent corrosion and to give a good base for primers to adhere. Available in 8 1/2", 9" and 11" widths.

960255 8.50" wide

960256 9.00" wide

960258 11.00" wide

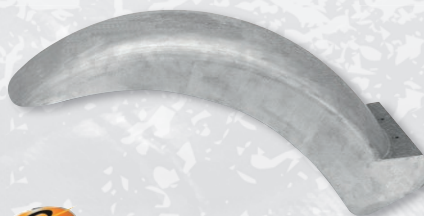


HERITAGE STYLE REAR FENDERS FOR FXR MODELS

These fender designs combine the classic styling of the Heritage Softail with the popular rubber-mount design of the FXR. They mount between the stock rear fender struts of all FXR models from 1982 thru 1994 and are available smooth or with a mount for the late-style taillight.

090230 Rear fender with 1973 up taillight mount

090231 Rear fender, smooth



ZODIAC'S BAD ASS TAPERING REAR FENDER BY CRUISESPEED

The ultimate steel strutless fender when converting your 1984 thru 2017 Softail to a wide rear tire. This fender will make the back end of your motorcycle look even bigger. Available in two models, one 9" wide for use with up to 200 tires the other 11" wide for use with up to 250 tires. Like all other Cruisespeed fenders they are a one piece design made without compromise by craftsman. Fits all stock Softail and aftermarket frames. Some aftermarket frames have a slightly narrower rear section. To make these fenders fit the narrower frames we include 2 x 3/8" thick spacers. Fenders come with a Phosphate etched finish to help prevent corrosion and to give a good base for primers to adhere.

960240 Bad Ass strutless 9" tapering rear fender including 3/8" spacers

960242 Bad Ass strutless 11" tapering rear fender including 3/8" spacers



CRUISESPEED STRUTLESS CLASSIC REAR FENDER

Another great looking Cruisespeed rear fender. Fits all stock Softail thru 2017 and aftermarket frames. Some aftermarket frames have a slightly narrower rear section. To make these fenders fit the narrower frames we include 2 x 3/8" thick spacers. Fenders come with a Phosphate etched finish to help prevent corrosion and to give a good base for primers to adhere. Available in 8 1/2", 9" and 11" widths.

960250 8.50" wide

960251 9.00" wide

960253 11.00" wide



FAT BOB FENDER FOR HARLEY FXR

A complete newly designed Fat Bob rear fender for all FXR models 1982 thru 1986 and FXRT 1986 thru 1992.

090028 Fat Bob rear fender



ZODIAC'S CRUSADER REAR FENDER BY CRUISESPEED

A 7 1/2" wide steel rear fender for custom fitment on 1984 thru 2017 Softails. Also fits many custom applications where a short fender is required. Fender has a welded-in reinforcement and a phosphate etched finish. Comes un-drilled to allow any custom fit just any way you like it.

960041 Crusader rear fender



ZODIAC'S CRUISESPEED ROUND TOP REAR FENDERS

The Round Top fender is the ultimate rear fender when converting your Softail to a wide rear low section tire. These fenders follow the line of the low profile wide tires enhancing the appearance of your motorcycle. For those who want to create their own custom design we have an un-trimmed fender available. The 9" wide version is for use with up to 200 tires, the 11" wide one is for use with up to 250 tires, the 12 1/2" fender takes up to 300 tires, and the 13 1/2" wide fender will take the latest 330 series rear tires. These fenders are a heavy gauge mild steel (2mm thick) made in a one-piece design without compromise by craftsman. Fits all stock Softail and aftermarket frames. Fenders come with a Phosphate etched finish to help prevent corrosion and to give a good base for primers to adhere.



Untrimmed Round Top rear fenders

- 960429** 9" wide
- 960439** 12 1/2" wide
- 960444** 13 1/2" wide



Trimmed Round Top rear fenders for lower profile tyres

- 960430** 9" wide
- 960433** 10 1/4" wide
- 960435** 11" wide
- 960440** 12 1/2" wide
- 960445** 13 1/2" wide



FAT BOB REAR FENDER FOR SOFTAIL MODELS

Exact duplicate of the original equipment one. Fender includes all the wire loom clips and necessary strut mounting holes just like stock. This fender for Softail models is perfect for crash repairs or converting the full fenders on Heritage models. Fits FXST, FXSTC and FXSTS models from 1984 thru 1999 (OEM 59914-86A).

090208 Fatbob rear fender



STOCK REPLACEMENT FXST REAR FENDER

A perfect copy from the rear fender as used on FXST, FXSTC, FXSTS and FXSTSB models from 1997 thru 1999. Comes in raw steel and is pre-drilled for ease of installation (OEM 59753-97).

090311 Raw Rear fender for FXST

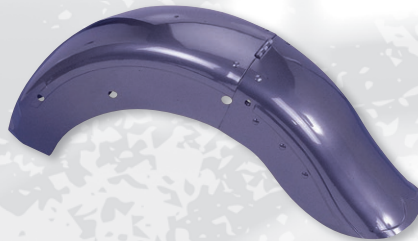


FATSO EXTRA-WIDE STEEL FAT BOB REAR FENDER

Extra Fat up to 225 Wide rear tires. The difficult part was to get a wide enough fender for these monster tires. Zodiac offers an Extra Wide 9" (23cm) version of the Fat Bob style rear fender to accommodate for Big Wheel conversions with up to 225 wide tires. This extra wide fender is available with, in 1984 thru 1999 Softail pattern, pre-drilled holes and a model without holes for custom made fender struts as well as many other Custom applications. Perfect for use with our Wide Tail Softail frame.

090280 9" Fat Bob rear fender, Softail

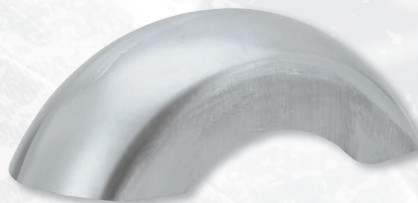
090281 9" Fat Bob rear fender, plain



HINGED REAR FENDER FOR HARLEY SOFTAIL MODELS

Heritage-style rear fenders with hinges. Available in two models which fit the OEM fender struts of all Softail models from 1986 thru 1999. One version is smooth without taillight mount permitting the use of a variety of taillights, the other has the 1973 up mount. Ideal for converting your FXST and FXSTC to the Heritage style.

090194 Without taillight mount (OEM 59126-86)



ZODIAC XTREME WIDE REAR FENDERS FOR SOFTAIL FRAMES

These fenders are engineered to follow the radius of today's up to 330mm low profile tires. Manufactured from mild steel using a deep-draw process that results in a strong rear fender. Available in 12" width for 280mm tires, 13" for 300mm tires, and even 14 1/4" for 330mm wide tires. The most effective coverage for 1984 thru 2017 wide-tire Softail-style frames.

090571 12" wide

090550 13" wide

090552 14 1/4" wide



ROLAND SANDS DESIGNS TRACKER FENDER KITS

Roland Sands' new steel struts in this Tracker fender kit are the perfect example of reduction of cost without compromising quality. Roland lost the billet and went with a steel strut giving you a bitchin' vintage style steel part that matches our existing steel products and reduces cost while maintaining strength, function and form. Tracker fender kits are a direct bolt-on to HD Softails (except Rocker). Struts are made from 3/8" thick 1018 Steel and available in chrome or black powder coat finishes. Fenders are made for use with 200mm wide rear tire and available in raw finish only, but the high quality sheet metal work requires just minimal preparation for paint. All necessary hardware included.

Fits 1990 thru 2007 Softail models

751903 With chrome fender struts

751901 With black powder coated fender struts

Fits 2008 thru 2017 Softail models except FXCW, FXCWC Rocker and Breakout

751902 With chrome fender struts

751900 With black powder coated fender struts

Individual parts

740639 Rear fender only for 200 series tire

01	HELMETS, LUGGAGE, AUDIO & MORE
02	SEAT
03	EXHAUST
04	ELECTRIC & LIGHT
05	ENGINE ELECTRICS
06	INTAKE
07	ENGINE
08	PRIMARY
09	TRANSMISSION
10	FINAL DRIVE
11	WHEELS & TIRE
12	BRAKE
13	FOOT CONTROL
14	HANDLEBAR
15	FRONT SUSPENSION
16	CHASSIS/FRAME & SHOCKS
17	FENDER & STRUTS
18	GAS TANK & INSTRUMENT
19	OIL TANK, FILTER & LINE
20	FASTENERS
21	MIRROR
22	WINDSHIELD
23	OIL, CHEMICALS & TOOLS
24	TECHTIPS & CROSS REF > ZPN
25	CROSS REF ZPN > PAGE
26	ALPHABETICAL INDEX

01
02
03
04
05
06
07
08
09
10
11
12
13
14
15
16
17
18
19
20
21
22
23
24
25
26



CUSTOM REAR FENDERS FOR SOFTAIL MODELS

These stylish steel fenders enhance the look of all 1986 thru 1999 5 Speed Softail models. They sit a little over 1 1/2" (4 cm) lower as the stock fender and feature a seat to fender radius that perfectly matches lowered bikes. Most stock and aftermarket seats will fit, but some seats with a steel base require custom fitment. Fenders are available with or without the mounting bracket for the stock 1973-up taillight and have an early-style reveal stamped in the rear tips. The installation of these fenders requires you to cut 5" off your stock fender struts. The stock turn signals must be relocated, and the saddlebags on FLSTC models cannot be reinstalled due to the shortened fender struts. 1997 thru 1999 models require modification and/or relocation of the OEM fuse box. Two decorative end caps are supplied with each fender to finish off the shortened struts and add to their overall appearance.

090224 Fender with 1973-up taillight mount

090225 Fender without taillight mount

090226 Replacement end caps (sold in pairs)



HERITAGE STYLE REAR FENDERS FOR SOFTAIL

A close to the Original Equipment rear fender, but with a ridge line on the sides for a more classy appearance and increased strength. Features turn signal mounting holes already located and includes the taillight mount and fender reveal. This fender is ready to use as an OEM replacement part or for FXST models wanting to convert to full one-piece fenders. Also available in a custom version with only strut holes in it when custom taillights are desired. Unpainted.

090276 [A.] Ridge line fender. Pre-drilled for taillight and fender struts, fits Heritage Softail models from 1986 thru 1999 (OEM 59126-86B)

090277 [B.] Ridge line fender. Pre-drilled for fender struts only, fits all Softail models from 1984 thru 1999 as a custom fender



METAPOL'S "FATTY II" STRUTLESS REAR FENDERS FOR STOCK SOFTAIL FRAMES

These Bad-Ass fenders are a restyled design of Metapol's "Wide-Ass" for use on stock 1984 thru 2017 Softail frames to accommodate up to 330 wide tires. in combination with our wide swingarm kit. This design emphasizes the B.B.A.W. Look (Big Bad Ass Wheel). Fender is made from fiberglass composite with a built-in wire tunnel and gel-coat finish that makes a perfect base for any custom paint job. No fender struts are needed, as these fenders have steel plates molded into the sides.

236273 For up to 250 rear tires

722229 For up to 330 rear tires



METAPOL'S "WIDE-ASS" STRUTLESS REAR FENDER FOR SOFTAILS

This Wide-Ass fender is designed for use on stock 1984 thru 2017 Softail frames. Will work in combination with our Wide-Ass swingarm kit to accommodate up to 200 wide rear tires. Emphasizes the big wheel looks. Made in Holland from fiberglass composite in a precision built mould. Has a built-in wire tunnel and gel-coat finish that makes a perfect base for any custom paint job. No fender struts are needed, as these fenders have steel plates molded into the sides.

236482 Wide-Ass Strutless rear fender



"FATTY II" STRUTLESS REAR FENDER WITH BUILT IN LED TAILLIGHT FOR SOFTAILS WITH WIDE TIRE CONVERSION

The "Fatty II" rear fender has the same features, like built in struts and wiring tunnel, as the Fatty I fender but as an extra feature it has our Narrow LED taillight perfectly molded in the fender. The Fatty II is available for use with 200, 230, and even 250 series rear tires. Fender is designed for use on stock 1984 thru 2017 Softail frames, but works also with most aftermarket frames. Made in Holland by Metapol exclusively for Zodiac from fiberglass composite in a precision built mould. Like all Metapol fenders is has a gel-coat finish that makes a perfect base for any Custom paint job. Fender comes complete with the narrow LED taillight. Taillights are also separately available.

236269 For use with up to 200 series tire

236270 For use with 230 thru 250 series tire

160536 Replacement Narrow LED taillight



METAPOL'S "FATTY" STRUTLESS REAR FENDER FOR ZODIAC WIDE-TAIL FRAMES

This Wide-Tail rear fender is specially designed for use with our Wide-Tail frame. It will accommodate up to 200 wide rear tires and is shaped in such a way it provides an extra fat look for that big wheel look. Made in Holland from fiberglass composite in a precision built mould. Has a built-in wire tunnel and gel-coat finish that makes a perfect base for a custom paint job. No fender struts are needed, as these fenders have steel plates moulded into the sides.

236485 Fatty rear fender for Wide- Tail frames



METAPOL'S "300 DUAL" STRUTLESS REAR FENDER FOR 1984 THRU 2017 SOFTAIL

Metapol is taking care of business here, a designer rear fender which is completed with our taillight ZPN 160925. Fabricated from fiberglass composite with built in struts result in a fender which can take anybody's backside. Incorporated in the design is a pre-wired wiring tunnel. Also features a provision in the seat area for the stock EFI computer unit. A classy paint job should be no problem since this fender has a perfect gel-coat finish. The taillight needs minor modifications to make it fit. Fits Softail style frames.

722374 For use with up to 300 rear tires

722384 For use with up to 250 rear tires

722399 For use with up to 200 rear tires

160925 Dual Hi-Glide LED taillight



STRUTLESS REAR FENDER FOR SOFTAILS AND COASTLINE HIGH-NECK CHOPPER FRAMES WITH 280 THRU 300 WIDE TIRES

These "Ton Pels" styled and Metapol manufactured Fat Rear Fenders have all the features that normally come with the quality Metapol fenders. They have built in struts and a wiring tunnel as well as a build in EU approved Snake Eye taillight. Available for use with the Zodiac's "Ton Pels Signature" Coastline High-Neck chopper frame or 1984 thru 2017 Softails using our up-to 300 wide tire conversion. Build exclusively for Zodiac from fiberglass composite in a precision built mould. Metapol fenders have a gel-coat finish that makes a perfect base for any custom paint job. Fender comes complete with the EU approved taillight.

236268 For Ton Pels Signature "High Neck" frame

722216 For use 280/300 wide tire conversion kit



FENDER EXTENSION FOR SOFTAIL MODELS

This stainless steel fender extension is a perfect replacement for the stock ABS plastic part. Fits 1986 thru 1999 Softail models, as well as most aftermarket Softail style swing arms (OEM 60363-86).

238763 Stainless Steel inner swingarm fender 1986-1999 (OEM 60363-86C)

742875 Stainless Steel inner swingarm fender 2000-2007 (OEM 60363-00B)

742876 Stainless Steel inner swingarm fender 2008 thru 2017 (OEM 60363-08)

NEW



TOMMY & SONS

TOMMY & SONS SINNER KIT FOR MILWAUKEE EIGHT SOFTAIL

Futuristic looking conversion kit with seat/rear fender combo, chin spoiler and gas tank shroud. Made from fiberglass in precision build moulds. Parts come with a white gel coat finish, ready for your painter's preparation but make sure to check and test fit prior to painting, Zodiac will not be responsible for any damage sustained to paint jobs. Sold as a kit.

Fits 2018 to present FXBB Street Bob and FXBR & FXBRS Breakout

761177 Sinner body kit



Dumax

BAGGER STYLE REAR FENDERS FOR SOFTAIL

These rear fenders are manufactured in precision moulds from fiberglass composite. They fill the gap between the bags and your frame. For 1996-2006 Softail models you either have to modify the stock rear fender or you have to order the optional Softail Sub fender separately. Fenders come in a grey primer gelcoat finish, ready for your painter's preparation. Suitable components i.e. saddle bags and brackets are sold separately and can be found elsewhere in this catalog.

Fits Softail models 1986 thru 2006, except 2006 FXST, FXSTB, FXSTS and FLSTFSE

751311 [A.]Bagger style Sub-Fender

751310 [B.]Bagger Style Fender

NEW



TOMMY & SONS

FENDER TO HARD BAG FILLER PANELS FOR TOURING

These fiberglass filler panels are made in precision build moulds by Tommy & Sons. They have a white gel coat finish, ready for your painter's preparation and close the gap between the stock rear fender and the stock hard shell saddlebags on 1993 to present Touring. Sold in pairs.

761121 Fender to hard bag filler panels

01
HELMETS,
LUGGAGE,
AUDIO & MORE

02
SEAT

03
EXHAUST

04
ELECTRIC
& LIGHT

05
ENGINE
ELECTRICS

06
INTAKE

07
ENGINE

08
PRIMARY

09
TRANSMISSION

10
FINAL DRIVE

11
WHEELS &
TIRE

12
BRAKE

13
FOOT
CONTROL

14
HANDLEBAR

15
FRONT
SUSPENSION

16
CHASSIS/
FRAME
& SHOCKS

17
FENDER
& STRUTS

18
GAS TANK &
INSTRUMENT

19
OIL TANK, FILTER
& LINE

20
FASTENERS

21
MIRROR

22
WINDSHIELD

23
OIL, CHEMICALS
& TOOLS

24
TECHTIPS &
CROSS REF
> ZPN

25
CROSS REF
ZPN > PAGE

26
ALPHABETICAL
INDEX



DOUBLE G BAGGERS SENNA STYLE REAR FENDER COVERS

These Senna style rear fender covers are made in Holland from fiberglass in precision build moulds by Double G Baggers. They are designed to be installed over the stock rear fender and struts, line up with stretched saddlebags and close the gap as found between the stock fender and the original equipment or aftermarket hard luggage and feature cut outs for the mufflers. These fender covers have a white gel coat finish, ready for your painter's preparation but, as with every custom part, make sure to check and test fit prior to painting. Neither Double G Baggers nor Zodiac will be responsible for any damage sustained to paint jobs.

746901 Fits 2009 to present Touring models



DOUBLE G BAGGERS ROCCA REAR FENDER COVER FOR TOURING MODELS

These fiberglass rear fender covers are made in Holland in precision build moulds by Double G Baggers. They fit exactly over the stock rear fender and a great match with the 5" (12.5cm) stretched Rocca saddlebag bodies. All parts come with a white gel coat finish, ready for your painter's preparation but make sure to check and test fit prior to painting, Zodiac will not be responsible for any damage sustained to paint jobs.

746953 Rocca style rear fender cover without license plate recess, fits 1993-2008 Touring models

746963 Rocca style rear fender cover without license plate recess, fits 2009 to present Touring models

746981 Super Stretched Rocca Style saddlebag bodies, fits 2014 to present models. Sold in pairs



NEW

TOMMY & SONS

TOMMY & SONS REAR FENDER FOR TOURING

Tommy & Sons rear fender for Bagger models are made in precision build moulds and close the gap between the stock rear fender and stock or extended length hard shell saddlebags. They have a white gel coat finish, ready for your painter's preparation.

761110 Touring 2009-2013

761111 Touring 2014 to present



NEW

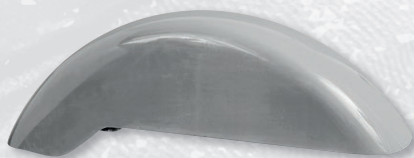
TOMMY & SONS

TOMMY & SONS CELTIC STYLE REAR FENDER COVERS

These Celtic style rear fender covers are made from fiberglass in precision build moulds by Tommy & Sons. They are designed to be installed over the stock rear fender and struts, line up with stretched saddlebags and close the gap as found between the stock fender and the original equipment or aftermarket hard luggage and feature cut outs for the mufflers. These fender covers have a white gel coat finish, ready for your painter's preparation but, as with every custom part, make sure to check and test fit prior to painting. Neither Tommy & Sons nor Zodiac will be responsible for any damage sustained to paint jobs.

761108 Fits 1997-2008 Touring models

761109 Fits 2009 to present Touring models



SUMAX DOMINATOR REAR FENDER

These Dominator fenders are cut down, smooth and nasty. Manufactured from Composites that make them strong, smooth and with straight side walls. Features mold in tube for safe and easy wiring of the taillight and is available in stock 7 1/4" wide.

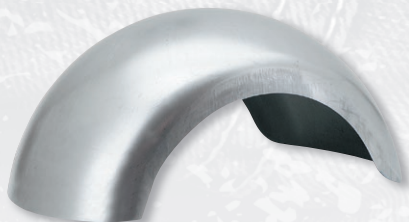
238592 Dominator stock 7 1/4" wide rear fender



CLASSIC STYLE FIBERGLASS REAR FENDER FOR TOURING MODELS

These fiberglass rear fenders are made in Holland in precision build moulds by Double G Baggers. They have a white gel coat finish, ready for your painter's preparation. Fit over the stock fender struts and narrow the gap between the stock rear fender and the stock hard shell saddlebags on 1997 thru 2008 Touring models.

746904 Double G Baggers Classic rear fender



ZODIAC XTREME WIDE REAR FENDERS FOR RIGID FRAMES

These fenders are designed to minimize the gap between the tire and fender. Suitable for up to 330mm wide tires. Available in 12" width for 280mm tires, 13" for 300mm tires, and even 14 1/4" for 330mm wide tires. Manufactured from mild steel. Only available for rigid frames.

090572 12" wide

090554 13" wide

090556 14 1/4" wide

NEW



NEW



NEW



TOMMY & SON\$

MAGNUS REAR FENDER FOR TOURING BY TOMMY & SONS

Magnus style rear fenders are a perfect match with the Magnus 7" stretched saddlebag bodies. Made from high quality fiberglass with a white gel coat surface, ready for your painter's preparation. Saddlebag bodies take stock lids, latches and hardware. Side covers fit only with the Magnus tank shroud kit.

Fits 2009-2013 Touring models

- 761161** Magnus rear fender
- 761162** Magnus 1998-2013 style 7" stretched saddlebag bodies
- 761153** Magnus tank shroud kit
- 761154** Magnus gas tank console
- 761156** Magnus stretched side covers

Fits 2014 to present Touring models

- 761160** Magnus rear fender
- 761163** Magnus 2014 to present style 7" stretched saddlebag bodies
- 761153** Magnus tank shroud kit
- 761154** Magnus gas tank console
- 761157** Magnus stretched side covers

TOMMY & SON\$

TOMMY & SONS ROCCA REAR FENDER COVER FOR TOURING

These fiberglass rear fender covers are made in precision build moulds by Tommy & Sons. They fit exactly over the stock rear fender and a great match with the 5" (12.5cm) stretched Rocca saddlebag bodies. All parts come with a white gel coat finish, ready for your painter's preparation but make sure to check and test fit prior to painting, Zodiac will not be responsible for any damage sustained to paint jobs.

761133 Rocca rear fender cover without license plate recess, fits 2009 to present Touring models

761112 Super Stretched Rocca Style saddlebag bodies, fits 1993-2013 models. Sold in pairs



TOMMY & SON\$

"FLOW" STRETCHED REAR FENDER

This rear fender has a great stretched look. A perfect combination with the "Flow" stretched saddlebag bodies. Made from fiberglass with a white gel coat finish, ready for your painter's preparation. Saddlebags take stock lids, latches and other hardware. Fit all 2009-2013 Touring models.

761179 "Flow" stretched rear fender without exhaust cut-outs

761164 "Flow" stretched saddlebag bodies, set of left and right



DOUBLE G BAGGERS REAR FENDER EXTENSIONS FOR TOURING MODELS

These fiberglass rear fender extensions are made in Holland in precision build moulds by Double G Baggers. They are great when installed in conjunction with stretched saddlebags to enhance their looks and also close the gap between the bags and the rear fender. Fender extensions come with a white gel coat finish, ready for your painter's preparation. Sold each.

746929 Rear fender extension fits 1997 thru 2008 Touring models

746928 Rear fender extension fits 2009 to present Touring models



9" WIDE GROUND-POUNDER STEEL REAR FENDER FOR HARDTAIL FRAMES

Our Ground-Pounder steel rear fender fits tight on rear wheels in hardtail frames. No unnecessary space between rear tire and fender. Fenders have a built-in chain notch and two internal steel wire tunnels for routing of the tail and indicator wires. These tunnels will also provide extra rigidity to the fender. This 9" wide fender comes undrilled to make it easy to set it up the way you like it and gives a 165° wheel coverage.

090302 9" Wide "Ground-Pounder"

01
HELMETS,
LUGGAGE,
AUDIO & MORE

02
SEAT

03
EXHAUST

04
ELECTRIC
& LIGHT

05
ENGINE
ELECTRICS

06
INTAKE

07
ENGINE

08
PRIMARY

09
TRANSMISSION

10
FINAL DRIVE

11
WHEELS &
TIRE

12
BRAKE

13
FOOT
CONTROL

14
HANDLEBAR

15
FRONT
SUSPENSION

16
CHASSIS/
FRAME
& SHOCKS

17
FENDER
& STRUTS

18
GAS TANK &
INSTRUMENT

19
OIL TANK, FILTER
& LINE

20
FASTENERS

21
MIRROR

22
WINDSHIELD

23
OIL, CHEMICALS
& TOOLS

24
TECHTIPS &
CROSS REF
> ZPN

25
CROSS REF
ZPN > PAGE

26
ALPHABETICAL
INDEX



ZODIAC'S HARDTAIL REAR FENDERS BY CRUISESPEED

Cruisespeed's steel rear fender fits tight over the rear wheels in hardtail frames. No unnecessary space between rear tire and fender. Available in 9", 11", 12 1/2", 13 1/2", and even 14 1/4" wide. Fenders come in a Phosphate etched finish to help prevent corrosion and to give a good base for primers to adhere. They come un-drilled for easy set up in the way you like. The trimmed version comes with a chain notch; the untrimmed version can be cut to your personal design.



Trimmed Hardtail Rear fenders

- 960420 9" wide
- 960421 11" wide
- 960424 12 1/2" wide
- 960451 13 1/2" wide
- 960450 13 1/2" wide, without chain cutout
- 960454 14 1/4" wide, without chain cutout



Untrimmed Hardtail Rear fenders

- 960419 9" wide
- 960422 11" wide
- 960423 12 1/2" wide
- 960449 13 1/2" wide
- 960453 14 1/4" wide



6" FLAT FENDER PLAIN

Custom style flat fender made from 16 gauge steel. Fender is made to Zodiac specifications to guarantee the best contour and length.

- 090071 Flat fender RAW



ZODIAC'S CUSTOM REAR FENDERS BY CRUISESPEED

Cruisespeed's fenders are the Ultimate in Style and perfection and are exclusively distributed by Zodiac. Cruisespeed's one-piece design fenders are made by craftsman using 2mm thick mild steel. They are smoother and have more beautiful flowing lines than any other fenders available today. No compromise was made when manufacturing these fenders. The steel fenders come with a Phosphate etched finish to help prevent corrosion and to give a good base for primers to adhere. The Cruisespeed fender range is available as "Smooth" or "Ridge Line", in a wide variety of styles and sizes. Matching design front fenders are also available. For those that want to create their own individual design we have the "Custom" style, which is supplied un-trimmed. All fenders come un-drilled for custom applications. When it comes to design and quality Cruisespeed's fenders are a class above, when it comes to economical pricing Cruisespeed will wipe out all other brands.



Smooth Sentry

- 960016 7 1/4"
- 960017 8 1/2"
- 960018 9"
- 960046 10 1/4"
- 960020 11"
- 950220 11" Aluminum



Smooth Sport

- 960021 7 1/4"
- 960022 8 1/2"
- 960023 9"
- 960047 10 1/4"
- 960025 11"



Smooth Custom

- 960001 7 1/4"
- 960002 8 1/2"
- 960003 9"
- 960432 10 1/4"
- 960005 11"
- 950205 11" Aluminum



Smooth Pro

- 960026 7 1/4"
- 960027 8 1/2"
- 960028 9"
- 960048 10 1/4"
- 960030 11"



Smooth Classic

- 960006 7 1/4"
- 960007 8 1/2"
- 960008 9"
- 960044 10 1/4"
- 960010 11"



Smooth Pro Stretched

- 960031 7 1/4"
- 960032 8 1/2"
- 960033 9"
- 960035 11"



Smooth Stretched Classic

- 960011 7 1/4"
- 960012 8 1/2"
- 960013 9"
- 960045 10 1/4"
- 960015 11" Fender

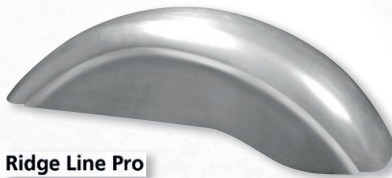


Smooth Pro Stretched

- 960036 7 1/4"
- 960037 8 1/2"
- 960038 9"
- 960049 10 1/4"
- 960040 11"


Ridge Line Custom

960151 7 1/4"
960152 8 1/2"
960153 9"
960155 11"


Ridge Line Pro

960176 7 1/4"
960177 8 1/2"
960178 9"
960180 Ridge Line Pro 11"


"GROUND-POUNDER" REAR FENDERS WITH STRAIGHT CUT SIDES

Super sleek looking heavy gauge steel rear fenders with straight cut sides. Ideal for the Customizer as they come undrilled to allow set up the way you like it. These fenders give 135° wheel coverage and have two built-in wire tunnels for neat routing of the wiring as well as adding extra strength and rigidity to the fender. Available in 8 1/2", 9", 10" and 11" wide to "Cover-Up" tires from 120 wide through to the monstrous 230 Avon tire. Matching design Ground-Pounder front fender can be found in the front fender section.

090322 Rear fender 8 1/2" wide
090300 Rear fender 9" wide
090308 Rear fender 10" wide
090309 Rear fender 11" wide


Ridge Line Classic

960156 7 1/4"
960157 8 1/2"
960158 9"
960160 11"


Ridge Line Pro Stretched

960181 7 1/4"
960182 8 1/2"
960183 9"


Ridge Line Stretched Classic

960161 7 1/4"
960162 8 1/2"
960163 9"
960165 11"


Ridge Line Sabre

960186 7 1/4"
960187 8 1/2"
960188 9"
960190 11"


"BOBBED" 6" WIDE FLAT FENDER

Made from thick gauge high quality steel, 6" wide, 42" long. Available in raw steel with 1" (2.5cm) or 1 1/4" (3.2cm) sides.

090068 Bobbed Flat fender RAW short sides
090069 Bobbed Flat fender RAW long sides


Ridge Line Sentry

960166 7 1/4"
960167 8 1/2"
960168 9"
960170 11"


GROUND-POUNDER REAR FENDERS WITH ROUND CUT SIDES

Super sleek looking heavy gauge steel rear fenders with round cut sides. Ideal for the Customizer as they come undrilled to allow set up the way you like it. These fenders give 175° wheel coverage and have two built-in wire tunnels for neat routing of the wiring as well as adding extra strength and rigidity to the fender. Available in 8 1/2", 9", 10" and 11" wide to "Cover-Up" tires from 120 wide through to the monstrous 230 Avon tire. Matching design Ground-Pounder front fender can be found in the front fender section.

090321 Rear fender 8 1/2" wide
090301 Rear fender 9" wide
090306 Rear fender 10" wide
090307 Rear fender 11" wide


Ridge Line Sport

960171 7 1/4"
960172 8 1/2"
960173 9"


CRUISE SPEED HARDTAIL REAR FENDERS FOR RIGHT SIDE DRIVES

No unnecessary space between rear tire and fender, as these steel rear fenders fit tight on rear wheels in hardtail frames. Available in 9", 11", 12 1/2" and even 13 1/2" wide. Fenders have two internal steel wire tunnels to route your wiring. These tunnels also provide extra rigidity to the fender. Fenders are phosphate etched finished to prevent for corroding and to give a good basis for primers to adhere to. They come un-drilled for easy set up in the way you like it. These "RSD" fenders have the chain notch on the right side for use in conjunction with Right Side Drive transmissions.

Hardtail "RSD" Rear fenders

960418 9" wide
960427 11" wide
960428 12 1/2" wide
960452 13 1/2" wide

01
HELMETS,
LUGGAGE,
AUDIO & MORE

02
SEAT

03
EXHAUST

04
ELECTRIC
& LIGHT

05
ENGINE
ELECTRICS

06
INTAKE

07
ENGINE

08
PRIMARY

09
TRANSMISSION

10
FINAL DRIVE

11
WHEELS &
TIRE

12
BRAKE

13
FOOT
CONTROL

14
HANDLEBAR

15
FRONT
SUSPENSION

16
CHASSIS/
FRAME
& SHOCKS

17
FENDER
& STRUTS

18
GAS TANK &
INSTRUMENT

19
OIL TANK, FILTER
& LINE

20
FASTENERS

21
MIRROR

22
WINDSHIELD

23
OIL, CHEMICALS
& TOOLS

24
TECHTIPS &
CROSS REF
> ZPN

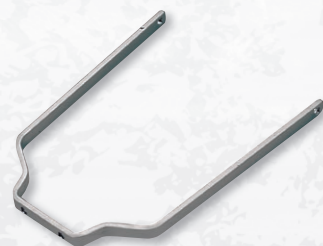
25
CROSS REF
ZPN > PAGE

26
ALPHABETICAL
INDEX

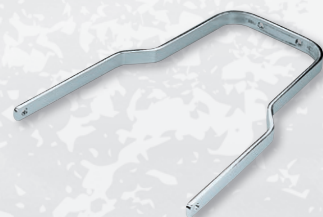


REAR FENDER BRACES

Chrome plated rear fender braces, works with our soft and hard tails for easy mounting of your rear fender.



531041 Rear fender brace for 5" & 6" flat fender



531042 Rear fender brace for Fat Bob fender



CHROME "TRAPDOOR" FRONT FENDER SPACERS

Chrome plated front fender spacers that are machined out of billet aluminum. Spacers have 2 3/4" (70mm) center-center distance 5/16" mounting holes. Sold in pairs.

- 090634** 1" (25.4mm) thick
- 090635** 1 1/8" (28.6mm) thick
- 090636** 1 1/4" (31.8mm) thick
- 090637** 1 3/8" (34.9mm) thick
- 090638** 1 1/2" (38.1mm) thick



"TOMAHAWK" FRONT FENDER SPACERS

Chrome or black front fender spacers that are machined out of billet aluminum. Fits 41mm forks on FXWG, Softails & Dyna Wide Glide. Spacers have 2 3/4" (70mm) center-center distance and drilled for use of 5/16" mounting bolts. Sold in pairs.

Chrome

- 090644** .75" (19mm) thick
- 090645** 1" (25.4mm) thick
- 090646** 1 1/8" (28.6mm) thick
- 090647** 1 1/4" (31.8mm) thick
- 090648** 1 3/8" (34.9mm) thick
- 090649** 1 1/2" (38.1mm) thick

Black

- 090744** .75" (19mm) thick
- 090745** 1" (25.4mm) thick
- 090746** 1 1/8" (28.6mm) thick
- 090747** 1 1/4" (31.8mm) thick
- 090748** 1 3/8" (34.9mm) thick
- 090749** 1 1/2" (38.1mm) thick



CHROME FRONT FENDER SPACERS

Chrome plated front fender spacers, available in various widths. Spacers accept 5/16" bolts and feature 2 3/4" center-center distance. Sold in pairs. Fender bolts are not included.

- 090620** 1 1/4" high, 4" wide, 3/8" thick
- 090621** 1 1/4" high, 4" wide, 1/4" thick
- 090622** 3/4" high, 3 1/2" wide, 1" thick
- 090623** 3/4" high, 3 1/2" wide, 3/4" thick



FENDER RELOCATOR BRACKETS FOR TOURING

Set of 2 steel brackets that raise the stock fender with 1" (2.5cm) when classic high section tires on stock wheels or a 21"x3.50" front wheel is fitted in 2014 to present Touring models.

- 302867** Chrome
- 302866** Black

NEW



TOMMY & SONS

TOMMY & SONS FRONT FENDER SPACERS FOR TOURING

Billet aluminum spacers come in pairs and complete with the required hardware. Great to fit Tommy & Sons and other custom front fenders.

- 761170** Fits 1993-2013 Touring models
- 761171** Fits 2014 to present Touring models



CHROME FRONT FENDER SPACERS

These chrome plated front fender spacers are machined out of solid billet aluminum. They allow fitment of a narrower than stock front fender in Wide Glide forks. Spacers feature 2 3/4" center-center distance and are drilled to accept 5/16" bolts. Sold in pairs.

Ball milled version

- 090625** 1 1/8" thick
- 090626** 1 1/4" thick
- 090627** 1 3/8" thick
- 090628** 1 1/2" thick

Smooth version

- 090629** 1" thick
- 090630** 1 1/8" thick
- 090631** 1 1/4" thick
- 090632** 1 3/8" thick
- 090633** 1 1/2" thick



ARLEN NESS

ARLEN NESS 21" FENDER BRACKETS FOR TOURING

These steel brackets properly relocate the stock front fender on 2014 to present Touring models to give clearance for a 21"x3.50" front wheel. Raises fender 1" (2.5cm), so can also be used to fit classic high section tires on stock wheels. Sold in pairs.

- A60122** Fits stock front forks
- A60123** Fits Ness Hot Legs



Colony

SPRINGER FRONT FENDER INSTALLATION KIT

An exact reproduction of the stock Harley hardware use to install the stock front fender on all 1936 thru 1948 Big Twins. Bolts and nuts are finished in the well-known Colony quality chrome. Kits also include a pair of thrust washers.

- 741951** Springer front fender installation kit



Colony

COLONY REAR FENDER BRACE BRACKET BOLT KIT

Kit contains two 5/16-18x3/4" UNC carriage bolts (OEM 5425), two 5/16-18 UNC hex nuts (OEM 7748), two washers and two lock washers to bolt the rear fender brace to the fender brace bracket on all 1929 thru 1957 Harley-Davidson models.

- 758430** Parkerized
- 758431** Cad plated
- 758432** Chrome



**TOP FENDER TRIM SET FOR FL**

These polished stainless steel trims are used to protect your paintwork and are a great looking alternative for a luggage rack. They have a shape that perfectly matches the radius of large FL fenders. Kit includes two long and two short trims and come complete with T-bolts, washers and nuts.

745920 Stainless Steel top fender trim set

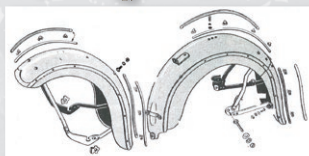
**SERGEANT STYLE REAR FENDER TRIMS FOR 1949 THRU 1954 MODELS**

Accurate reproductions of the rear fender trims as found on many 1949 thru 1954 models. Trims are sold in sets and come complete with mounting clips. Mounting clips are also separately available.

Fits all 1949 thru 1950 OHV models and 1950 45CI

745916 Set with all 6 rear fender trims and fastening clips (OEM 59874-49)

745919 Set of 26 fastening clips only (OEM 59225-39)

**FENDER TRIMS FOR VINTAGE MODELS**

Accurate reproductions from the front and rear fender trims as found on many 1940 thru 1949 models. Trims are sold in sets and come complete with mounting clips. Mounting clips are also separately available.

Fits all 1940 thru 1948 models and 1949 45CI

745914 Set with all 4 front fender trims and all 4 rear fender trims and fastening clips (OEM 59200-39)

745915 Set with all 4 front fender trims and fastening clips (OEM 59207-39)

745918 Set with all 4 rear fender trims and fastening clips (2 pcs. OEM 59881-39 and one of each OEM 59883-39 & OEM 59884-39)

745919 Set of 26 fastening clips only (OEM 59225-39)



Fits all 1951 thru 1954 OHV models

745917 Set with all 2 rear fender trims and fastening clips (OEM 59878-51 & 59879-51)

745919 Set of 26 fastening clips only (OEM 59225-39)

**FRONT FENDER RAIL FOR TOURING MODELS**

Chrome rail that exactly follows the lines of the front fender on 1987 thru 1993 FLHS, 1994 thru 2013 FLHR and 1996 thru 2013 FLHT models. Does not fit 1998 to present FLTR nor 2009 FLHTCUTG models.

302243 Chrome front fender bumper trim (OEM 91085-83D)

**"V" STYLE FENDER TIPS AND TRIM**

Exact reproduction of the early FL front and rear fender tips and stainless steel trim pieces. Tips are cast like the OEM equipment and have a perfect chrome finish, lower edge trim are pressed from stainless steel to make these tips and trims an exact duplicate in both form and material. OEM replacement on FL models 1959 thru 1966 but can be fitted to all FL style front fenders 1949 thru 1986 and all FL style rear fenders 1959 thru 1986.

090142 Front fender tip "V" style (OEM 59216-59)

090132 Front fender side spear set (OEM 59205-57 & 59206-57)

090104 Rear fender tip "V" style (OEM 59887-59)

**FENDER TIPS WITH CHEVRON DESIGN**

Originally available as an accessory item, these die-cast fender tips fit the OEM front and rear fenders on FL models 1967 thru 1973, but may also be fitted to all FL style front fenders from 1949 thru 1986 and all FL style rear fenders from 1958 thru 1986. The perfect finishing touch for bike restoration.

090213 Front fender tip (OEM 59215-59A)

090212 Rear fender tip (OEM 59885-59A)

090132 Front fender side spear set (OEM 59205-57 & 59206-57)

**CHROME REAR FENDER TRIM RAIL FOR FL/FLH MODELS**

An American-made trim rail that is designed just like the original "Aristocrat" fender rail sold as an accessory for early FL models. It bolts on easily in about five minutes with the mounting hardware which is included. Fits FL models from 1958 thru 1984 (OEM 91007-58).

090229 Chrome rear fender rail

**ADJURE INC. LED FENDER LIGHT UNITS**

Adjure's fender light will really add to your Dresser's or Nostalgia fender tips. They fit straight into the fender tip frame and OEM sockets. No need for a Load Equalizer or other electronic trick box. LED's run cooler and last longer than conventional incandescent bulbs. Available in amber for front use and red for rear use. Front fits 1980 thru 2013 FLHT, FLT, FLHS and FLHR models and 1993 thru 1996 FLSTN. Rear fits 1980 thru 2008 FLHT, FLT, FLHS and FLHR models, 1986 thru 2008 FLSTC, and 1993 thru 1996 FLSTN.

639002 Amber LED front fender tip unit

639001 Red LED rear fender tip unit

**COLONY FENDER STRUT MOUNTING HARDWARE FOR 1958 THRU 1984 FL MODELS**

Fender to strut mounting hardware kit fits OEM and Zodiac's replacement fender struts.

741838 Fender Strut Mounting Hardware

01
HELMETS,
LUGGAGE,
AUDIO & MORE

02
SEAT

03
EXHAUST

04
ELECTRIC
& LIGHT

05
ENGINE
ELECTRICS

06
INTAKE

07
ENGINE

08
PRIMARY

09
TRANSMISSION

10
FINAL DRIVE

11
WHEELS &
TIRE

12
BRAKE

13
FOOT
CONTROL

14
HANDLEBAR

15
FRONT
SUSPENSION

16
CHASSIS/
FRAME &
SHOCKS

17
FENDER
& STRUTS

18
GAS TANK &
INSTRUMENT

19
OIL TANK, FILTER
& LINE

20
FASTENERS

21
MIRROR

22
WINDSHIELD

23
OIL, CHEMICALS
& TOOLS

24
TECHTIPS &
CROSS REF
> ZPN

25
CROSS REF
ZPN > PAGE

26
ALPHABETICAL
INDEX



161106



161107



161108



161109



FENDER TIP LIGHTS

Stock style fender tip lights with a little extra. Where "The Factory" installs them just with a classic bulb and amber lens on the front fender or a classic bulb and red lens on the rear fender, Zodiac offers various colors with a classic 12 Volt 10 Watt wedge base bulb or state of the art bright shining LED's. Apart from their longer life and different appearance, LED lighting draws less current as a traditional bulb, making them ideal for bikes equipped with tons of electric consumers like auxiliary lighting, radio's, CB's and so on. Fender tip lights come prewired. Both front and rear early style versions come with a single pin insulator style plug installed. Front late style comes with the 2-place socket housing as used from 2000 to present. The rear late style comes with the 3-place socket housing as used from 1998 thru 2008 installed. When you just simply change the socking housing you can install late style lights on earlier models.

Fits the front fender on all 1980 thru 2013 FLHR, FLHT, FLHTC, FLHTCU and FLT Touring models, 1986 thru 2008 FLSTC Softail and 1993 thru 1996 FLSTN Softail (OEM 59082-79, 59082-96, 68706-00)

- 090186** Amber, bulb lighted, early style plug
- 161106** Amber, bulb lighted, late style socket housing
- 161107** Amber, LED lighted, late style socket housing
- 161108** Smoke, bulb lighted, late style socket housing
- 161109** Smoke, LED lighted, late style socket housing



Fits the rear fender on all 1980 thru 2008 FLHR, FLHS, FLHT and FLT Touring models, 1986 thru 2008 FLSTC Softail and 1993 thru 1996 FLSTN Softail (OEM 59658-79A, 59659-96, 59659-98, 59683-03, 59672-99)

- 090187** Red, bulb lighted, early style plug
- 161104** Red, bulb lighted, late style socket housing
- 161105** Red, LED lighted, late style socket housing
- 161100** Amber, bulb lighted, late style socket housing
- 161101** Amber, LED lighted, late style socket housing
- 161102** Smoke, bulb lighted, late style socket housing
- 161103** Smoke, LED lighted, late style socket housing

Replacement lens

- 090145** Amber
- 090147** Red



EAGLE FENDER TIPS

These fender tips are available in two sizes, the large fender tip fits all Harley FL rear fenders 1934 thru 1948 as well as many after market front and rear fenders. The small fender tip will fit most OEM and after market narrow Harley front fenders. Tips are chrome plated and have embossed eagle logo. Mounting hardware included.

- 301634** Eagle fender tip large (OEM 59292-82T)
- 301635** Eagle fender tip small (OEM 59280-85T)



REAR TRI BAR LED LIGHTS FOR STREET GLIDE

Our tri-bar LED light replaces the stock rear fender mounted running light on 2006 thru 2009 FLHX Street Glides. The LED's glow in running mode and will increase in intensity when the brakes are applied. They come with hardware, wiring and OEM loom connectors and are available with smoke or clear lens. Can also be installed on 1999 thru 2008 Touring models when the chrome or black rear fender extension is installed.

- 160805** Chrome rear fender extension
- 160879** Black rear fender extension
- 160880** Tri-bar red LED light with smoke lens
- 160881** Tri-bar red LED light with clear lens



FRONT FENDER TIPS

Chrome plated front fender tips to fit the Narrow Glide front fenders as used on FX/FXR and Sportster models to present. Will also fit many "Narrow" custom fenders. These tips are available with or without detailed, embossed Eagle logo. Will dress-up and protect your front fender.

- 090188** Chrome, plain
- 090190** Chrome with Eagle logo



REAR FENDER TIP LED LIGHT FOR 2009-UP TOURING

This LED-lighted chrome rear fender tip is Original Equipment on US domestic FLHTC Electra Glide Classic, FLHTCU Ultra Electra Glide and FLHTK Ultra Electra Glide Classic models 2009 to present. Great to upgrade the looks of your International Export model into The Original American style. And there is more, as the OEM light is available with a red lens only, we offer these lights also with an amber lens, or a clear or smoke lens with red LED's. Lights comes pre-wired with a connector ready to plug into your stock wiring harness as a running light, but easy to change in to let it work as an auxiliary brake light. Does not fit FLHX Street Glide, FLTR Road Glide and FLTRX Road Glide Custom models.

- 161119** With red lens (OEM 59672-09)
- 161117** With amber lens
- 161118** With smoke lens and red LEDs
- 161120** With clear lens and red LEDs



WINGED SKULLED ORNAMENT

Zinc alloy ornament with stud, nut and washer. Measures 4" (107mm) high and almost 2 7/8" (72mm) wide. Sold each.

- 165595** Chrome



INTERNAL MOUNTING FENDER STRUTS FOR HARLEY

Smoothly finished, chrome plated custom fender struts for Harley. The rear of each set features concealed mounting studs, allowing the installation from the back, eliminating external mounting holes and hardware.

- 090183** Fits FXWG 1980 thru 1986



national cycle

CHROME CAST FENDER TIPS

National Cycle's chromed cast fender tips are an economical way to add that finishing touch to your customized bike. Back in the 1940s, National Cycle patented the classic "airstreamer" style fender tip that practically defines the American cruiser look. This hallmark product has been painstakingly refined for today's motorcycles. By casting the product, the shape and high crown details that distinguish these tips really stand out. These are not ordinary fender tips. These cast tips have a jewel quality chrome finish with a show bike polish. The fender tips come as a 2-piece set for selected models. These kits contain a fender tip for both ends of the front fender.

Stock front fender applications

- 731153** 1990-2000 FLSTF Fat Boy
731156 2001-2017 FLSTF Fat Boy, 2-piece set
731160 2004 to present XL Sportster with 19" or 21" front wheel, 1980-1985 FXWG, 1983 FXDG, 1984-1990 FXST, 1999-2007 FXST, 2000-2009 FXSTB Night Train, 1989-2006 FXSTS Springer, 1995-1997 FXSTSB Bad Boy, 1987-1999 and 2007-2017 FXSTC Custom
731162 2000-2013 FLTR, FLTRU and FLTRX Road Glide, 2-piece set

Stock rear fender applications

- 731154** 1990-2000 FLSTF Fat Boy and 1997-2005 FLSTS Heritage Springer
731157 2001-2006 FLSTF Fat Boy
731161 2007-2017 FLSTF Fat Boy
731158 2006-2007 FXST Softail Standard, 2007-2017 FXSTC Softail Custom, 2006-2009 FXSTB Night Train
731159 2000-2007 FXSTD Deuce
731163 2000-2013 FLTR, FLTRU and FLTRX Road Glide



GENUINE ZODIAC 2 YEARS WARRANTY

GENUINE ZODIAC SKULLS

Easy to install on almost any flat surface with the included screws and foam to protect paint or chrome. Skulls are made from zinc alloy, approx. 2 3/4" (7cm) high and sold each.

- 165586** Chrome
165587 Bronze
165588 Black



GENUINE ZODIAC 2 YEARS WARRANTY

EAGLE'S HEAD FENDER ORNAMENT WITH LIGHT

Die-cast Eagle's head fender ornament with or without integrated light for lightening eyes of the Eagle's head. Will give a perfect finishing touch on your front fender. Available in chrome only and Gold/Chrome finish. The Gold on the Gold accented version is real 24 carat Gold.

- 090221** Chrome finish, with light
090222 Gold/Chrome finish, with light
090219 Chrome finish, without light



GENUINE ZODIAC 2 YEARS WARRANTY

FENDER LIGHT

Perfect reproduction of the early fifties fender light. Features 12 Volt bulb and wiring. Die-cast construction, will fit most fenders. Available with clear or amber lens.

- 160065** Fender light with amber lens (OEM 68450-49A)
160067 Fender light with clear lens (OEM 68455-49W)



GENUINE ZODIAC 2 YEARS WARRANTY

INDIAN HEAD FENDER LIGHTS

Die-cast aluminum with a chrome or classic red and gold powder coat finish. Ornaments are 6" (152mm) long and come with 12 Volt bulb or bright shining LED.

- 160403** Chrome bulb type with ivory lens
160404 Chrome blue LED with clear lens
160405 Red and gold powder coated bulb type with ivory lens
160406 Red and gold powder coated blue LED type with clear lens



GENUINE ZODIAC 2 YEARS WARRANTY

"BAD GUYS" SKULL FENDER ORNAMENTS

Dress-up your front fender with these skull fender ornaments. Available with or without lighted eyes, Chrome or Gold plated Skull and your choice of green or red eyes.

- 090239** Chrome with red eyes
090240 Gold with red eyes
090243 Chrome with red eyes and light



GENUINE ZODIAC 2 YEARS WARRANTY

INDIAN HEAD LIGHTED FENDER ORNAMENTS

These 8" (20cm) long, die-cast Indian Head fender ornaments feature a chrome or gold & chrome finish, concealed mounting and a lighted face. They come pre-wired and complete with mounting hardware and 12 Volt bulb.

- 160343** Gold & Chrome finish
160347 Chrome



GENUINE ZODIAC 2 YEARS WARRANTY

FENDER LIGHT "OLD STYLE"

An excellent reproduction of the "Old Style" fender light. Show-chromed die-cast construction with concealed mounting bolts. Fender light comes complete with amber or clear lens and 12 Volt bulb.

- 162034** Fender light with amber lens
165138 Fender light with clear lens
165140 Clear lens only



DEVIL LICENSE PLATE TOPPERS & FENDER ORNAMENTS

Thumb a thick nose to everyone you overtake with these die cast license plate toppers.

- 789322** 3 1/2" (9cm) tall with red jacket, tab mount
789323 3" (7.6cm) tall with 1/4" UNC stud



EUROPEAN MADE ZODIAC

CURVED DESIGN FENDER STRUTS

Fits Sportail, Super-Ass and Wide-Tail frames with up to 8" wide fenders, also fits stock Softail frames with up to 10" wide fenders.

- 238000** With 25mm offset
722274 Without offset

- 01 HELMETS, LUGGAGE, AUDIO & MORE
 02 SEAT
 03 EXHAUST
 04 ELECTRIC & LIGHT
 05 ENGINE ELECTRICS
 06 INTAKE
 07 ENGINE
 08 PRIMARY
 09 TRANSMISSION
 10 FINAL DRIVE
 11 WHEELS & TIRE
 12 BRAKE
 13 FOOT CONTROL
 14 HANDLEBAR
 15 FRONT SUSPENSION
 16 CHASSIS/FRAME & SHOCKS
 17 FENDER & STRUTS
 18 GAS TANK & INSTRUMENT
 19 OIL TANK, FILTER & LINE
 20 FASTENERS
 21 MIRROR
 22 WINDSHIELD
 23 OIL, CHEMICALS & TOOLS
 24 TECHTIPS & CROSS REF > ZPN
 25 CROSS REF ZPN > PAGE
 26 ALPHABETICAL INDEX



Colony

CHROME LOW PROFILE FENDER STRUT MOUNTING KITS

These very complete kits contain unique low-profile allen head screws, washers and nuts.

721868 Fits 4-hole struts on 5 Speed Heritage Softail and Fat Boy 1986 thru 1999

721869 Fits 6-hole struts on FXST, FXSTC, FXSTS and Bad Boy 1986 thru 1999

721870 Fits all FXST and FLST Softail 2000 thru 2017, except FXSTD Deuce



SPORTSTER FENDER STRUTS

Die cast aluminum reproductions from the stock fender struts. Installs with the stock hardware. Sold in pairs of left and right.

781085 Chrome, fits 1982-1989 Sportster (OEM 59950-81 & 59951-81) Order inserts separately

781086 Chrome, fits 1990-1993 Sportster (OEM 59950-89 & 59951-89) Order inserts separately

781090 Black, fits 1990-1993 Sportster (OEM 59950-89 & 59951-89) Order inserts separately

781138 Red reflector inserts, pair (OEM 59290-90)



SPORTSTER FENDER STRUT COVERS

Chrome covers, easy to install over the stock fender struts. Sold in sets for left and right.

781088 Fits 1982 thru 1989 Sportster (OEM 59243-95)

781087 Fits 1990 thru 1993 Sportster (OEM 59241-95)

781089 Fits 1994 thru 2003 Sportster (OEM 59896-94 & 59897-94)

781084 Fits 2004 to present XL Sportster (OEM 59902-04 & 59903-04)



STEEL FENDER STRUTS FOR WIDETAIL, SUPER-ASS, SPORTAIL AND STOCK SOFTAIL MODELS

These raw steel fender struts are available in various off-sets and widths. They can be used on our Wide-Tail, Super-Ass and Sportail frames, as well as to customize stock Softail models or to complete your Custom project. Straight design fender struts are available in various offsets.

Straight Design fender struts

236499 Fits stock Softail frames with Zodiac Wide-Ass kit and up to 10" wide fenders, can also be used for Wide-Tail, Super-Ass and Sportail frames. Both struts have 46mm offset

237999 Fits Wide-Tail, Super-Ass and Sportail frames with up to 8 1/2" wide fenders with 2mm off-set, can also be used as a replacement on pre-1985 Softail models with up to 10" wide fenders. Both struts have 34mm offset

236444 Fits Wide-Tail, Super-Ass and Sportail frames with up to 10" wide fenders, also fits stock Softail frames with up to 12" wide fenders. Right side strut has 12mm off-set

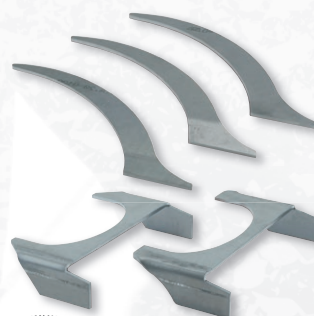
236434 Without offset, fits Custom frames



STEEL FENDERSTRUTS FOR SOFTAIL

Straight design raw steel fender struts for use with 250 rear tires in conjunctions with our Extra Wide swing arm kits in 2007 thru 2017 Softail models. Left fender strut has a 3/4" (19mm) offset.

730501 Straight design raw steel fender struts



BUILD-YOUR-OWN CUSTOM FENDER STRUTS

Raw steel fender struts and fender strut base for Custom applications. Together with one of our custom fenders this allows you to create exactly that custom rear fender for your Softail. Fender struts are sold each and available with 32mm offset to the left or to the right, as well as straight. Fender strut bases are available in "Narrow" to fit stock, 300mm wide frames, or "Wide" for 320mm custom frames.

722576 Fender strut with 32mm left offset

722588 Fender strut with 32mm right offset

722589 Fender strut straight

722587 Fender strut base Narrow (300mm inside)

722586 Fender strut base Wide (320mm inside)



CHROME BILLET ALUMINUM FENDER STRUTS FOR SOFTAIL

These custom style fender struts are CNC machined from solid billet aluminum, then polished and finally show chrome finished. Designed for stock Softail frames that have a 11" wide fender, wide swing arm and wide rear wheel installed. Sold in pairs and come complete with hardware.

090476 Chrome fender struts with hardware



CUSTOM SOFTAIL FENDER STRUTS

These fender struts are designed for use with Stock & Custom Softail frames. Available in your choice of billet aluminum, or raw steel.

700950 Billet aluminum fender struts

700951 Raw steel fender struts



2 YEARS WARRANTY

SHOW-CHROME FENDER STRUTS

Chrome plated rear fender struts for all 4 Speed Big Twins 1955 thru 1986 and Sportster 1954 thru 1978. Sets are pressed from high grade steel and pre-drilled with precision for a perfect fit. Can be used to mount OEM or aftermarket fenders. Installation of FL or FXWG style struts on 4 Speed FX models will permit mounting of FL or FXWG fenders on these models. Hardware not included.

090178 Fits FL 1958 thru 1984. Unlike stock these have 3 countersunk holes to mount the fender. Requires ZPN741838 fender mount kit (OEM 59932-58, 59933-58, 59932-77 & 59933-77)

090185 Fits FX 1972 thru 1985 (OEM 59672-77)

090179 Fits FXWG 1980-thru 1986 (3 hole) (OEM 59960-80)

090180 Fits XL 1954 thru 1978 (OEM 59934-73)



2 YEARS WARRANTY

SPORTSTER FENDER STRUTS

Exact reproductions from the stock fender struts. Die cast aluminum construction with a show chrome finish. Installs with the stock hardware. Sold in pairs of left and right.

090483 Chrome, fits 1982-1989 Sportster, Genuine Zodiac, 2 Year Warranty (OEM 59950-81 & 59951-81)

090482 Chrome, fits 1990-1993 Sportster, Genuine Zodiac, 2 Year Warranty (OEM 59950-89 & 59951-89)