



Oil Tank 19-002



Oil/Fuel Line & Fitting 19-004



Drain 19-007

19



Oil Pressure Gauge 19-007



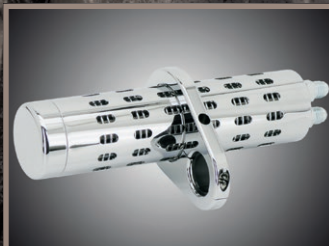
Dipstick 19-009



Oil Change and Service Kit 19-010



Oil Filter 19-013



Oil Cooler 19-017

01	HELMETS, LUGGAGE, AUDIO & MORE
02	SEAT
03	EXHAUST
04	ELECTRIC & LIGHT
05	ENGINE ELECTRICS
06	INTAKE
07	ENGINE
08	PRIMARY
09	TRANSMISSION
10	FINAL DRIVE
11	WHEELS & TIRE
12	BRAKE
13	FOOT CONTROL
14	HANDLEBAR
15	FRONT SUSPENSION
16	CHASSIS/FRAME & SHOCKS
17	FENDER & STRUTS
18	GAS TANK & INSTRUMENT
19	OIL TANK, FILTER & LINE
20	FASTENERS
21	MIRROR
22	WINDSHIELD
23	OIL, CHEMICALS & TOOLS
24	TECHTIPS & CROSS REF > ZPN
25	CROSS REF ZPN > PAGE
26	ALPHABETICAL INDEX



CHROME OIL TANK FOR 4 SPEED BIG TWINS

An exact reproduction of the Original Equipment 4 Speed Big Twin oil tank for all FX and FL models from 1965 thru 1986. It features triple chrome plating and is inspected and cleaned before shipment. Fitted with the pre-1982 large diameter filler opening, the tank will accept the "in-tank" style oil filter. The side filler/dipstick location makes it possible to add oil or check the level without removing the seat.

234368 Chrome 4 Speed Big Twin oil tank (OEM 62504-65A)



Samwel
SUPPLIES
MOTORCYCLE PARTS, SADDLES & SADDLEBAGS

NEW

SAMWEL OIL CAP FOR 45CI ARMY MODELS

Eaton style oil tank cap found on WLA & WLC models. Classic army green finish.

780092 Oil cap WLA, WLC (OEM 3507-37N)



780241 Stickers "OIL", 1" x 5/16", set of 2



EARLY BIG TWIN STYLE OIL TANKS

This replica wrap-around oil tank features seam-welded edges, which show weld marks as the genuine oil tanks did back in those days. Fits 1936 thru 1940 E & EL, 1938 thru 1947 U, UL, UH & UHL and 1941 thru 1957 F & FL Big Twins.

781213 Stock 1938-1957 style oil tank, black painted. Includes screw-in dip stick but has no battery mount tabs (OEM 62504-38)



Colony

NEW

COLONY EARLY BIG TWIN OIL TANK MOUNT KIT

Exact replicas of the OEM hardware to bolt the oil tank to the frame on all 1936-1957 Big Twins. Includes 2 spacers (OEM 3503-36C & 62581-36), 2 stud nuts (OEM 0117 & 7752), 2 bolts (OEM 3748-26 & 4013), 2 bolts (OEM 064 & 3974) and 4 washers (OEM 0259 & 7040).

781289 Chrome
781290 Cad plated
781291 Parkerized



GENUINE ZODIAC
2 YEARS WARRANTY

CHROME OIL TANK CAP ASSEMBLY

Fits all OEM style oil tanks on 4 Speed Big Twin models thru 1986 (except FXST) and electric start Sportster models 1967 to early 1978 (OEM 62610-52TA).

011359 Chrome oil tank cap assembly



GENUINE ZODIAC
2 YEARS WARRANTY

OIL TANK/-CLUTCH CABLE BRACKET FOR HARLEY

Chrome plated oil tank and clutch cable bracket. Fits all Big Twins 1965 to early 1979 (OEM 62576-65A).

011309 Oil tank/-clutch cable



781214 Rear support, parkerized (OEM 62585-36)



781215 U-clamps, set of 2, chrome (OEM 59800-36)

781232 U-clamps, set of 2, parkerized (OEM 59800-36)



GENUINE ZODIAC
2 YEARS WARRANTY

CHROME PLATED OIL TANK FOR FXR

Beautiful, triple chrome plated oil tank for 1982 thru 1994 FXR models (except 1986 up Super Glide models). Included with the tank is a remote drain hose fitting kit which allows it to be drained from the kickstand side through a rubber hose. When the hose is not in use it plugs onto a dummy fitting. Hose, clamps and dummy fitting are included in the kit (OEM 62406-81/86 and 62414-86).

011370 Oil tank FXR, chrome



GENUINE ZODIAC
2 YEARS WARRANTY

OIL TANK TRIM FOR FL AND FX MODELS

Chrome plated steel oil tank trim. Conceals the oil tank seam on all FL and FX models 1965 thru 1982 with stock oil tank (OEM 62534-65).

301331 Oil tank trim



GENUINE ZODIAC
2 YEARS WARRANTY

CHROME OIL TANK FOR SPORTSTER

Super looking oil tank that adds a bright splash of chrome to the right side of all 1983 thru 2003 Sportster models. Replaces the original equipment part and matches perfectly with our battery and ignition module covers. On 1983 thru 1993 models the stock filler cap can be used, the oil tank for 1994 thru 2003 models comes complete with filler cap.

011383 Fits 1983 thru 1993 models

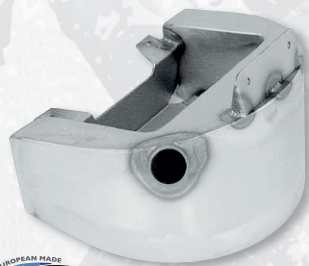
011706 Fits 1994 thru 2003 models (OEM 62475-94A & 62475-97)



GENUINE ZODIAC 2 YEARS WARRANTY
CHROME PLATED CUSTOM OIL TANK FOR SOFTAIL

Chrome plated custom oil tanks in Domed Cylindrical or Octagonal style. Tanks feature a battery box measuring 7"x4" (178mm x 102mm) and come with oil tank plug, brackets, anti-vibration rubber stud mount and hardware. Fit Softail models 1989 thru 1999, as well as most custom frames. Domed tanks measure 12 1/2" (320mm) long and have a diameter of 6 1/4" (160mm).

241320 Domed chrome oil tank, side fill
241307 Octagonal chrome oil tank, center fill



EUROPEAN MADE ZODIAC 2 YEARS WARRANTY
HORSESHOE OIL TANK FOR ZODIAC SPORTSTER SOFTAIL FRAME

This heavy gauge raw steel oil tank is designed for use in our Sportail Softail frame. It will clear the final drive belt on the right side.

236170 Horseshoe oil tank for Sportster Softail frame



STOCK STYLE OIL TANK FOR 1989-1999 SOFTAIL

Replica oil tank fits 1989-1999 Evolution Softail and has stock 3 Quart (2.84 Liter) capacity.

789427 Black (OEM 62498-89A)
789428 Chrome (OEM 62498-89A)



CENTER FILL OIL TANK FOR 1989-1999 SOFTAIL

Oil tank fits 1989-1999 Evolution Softail and most custom frames. Has stock 3 Quart (2.84 Liter) capacity and features threaded inserts on top for custom or stock mounting.

789429 Black
789430 Chrome



WINGED CENTER FILL OIL TANK FOR 1989-1999 SOFTAIL

Oil tank fits 1989-1999 Evolution Softail. Has stock 3 Quart (2.84 Liter) capacity and features threaded inserts and wings on the rear to close the gap between the frame.

789433 Chrome



POLISHED STAINLESS STEEL WRAP AROUND SOFTAIL OIL TANK BY CRUISE SPEED

These wrap around Stainless Steel oil tanks are the ultimate oil tanks for Softail models. Manufactured from high quality 304 Stainless Steel with a beautiful mirror polished finish that looks better than chrome plating. For a very clean custom look, these side fill oil tanks are welded together using 316 Stainless steel rods. This allows the welds to be ground and polished to the same perfection as the tank material. For Twin Cam Softail 2000-2017 we offer a custom style tank with 1/8" NPT type fittings for use with aircraft style braided steel hoses or rubber lines. Oil tanks come complete with Stainless Steel filler cap with dip stick.

Fits Softail models 2000 thru 2017

930052 Oil tank with 1/8" NPT connector holes

Oil tank nipples for use with rubber hose

347033 Oil tank nipple 90 degrees 1/8" NPT (OEM 16304-87)
347035 Oil tank nipple straight 1/8" NPT (OEM 63533-41)
237641 Aluminum 1/4" NPT oil fitting (each)



STOCK STYLE OIL TANK FOR TWIN CAM SOFTAIL

Perfect copy of the OEM oil tank as found on most 2000-2017 Softail models, except FXCW & FXCWC Rocker and FXSB Breakout. Mounting hardware must be ordered separately.

789464 Chrome Twin Cam Softail oil tank only (OEM 62498-00A, also replaces 62498-01A)
789465 Chrome upper mounting bracket only (OEM 62769-00)
789466 Chrome upper mounting bracket with bolts, nuts, washers and rubber mounts (OEM 62769-00)



ALUMINUM "BEEHIVE" OIL TANKS

Custom style round aluminum oil tanks for horizontal or vertical mounting, complete with weld-on mounting bracket. Tanks are 5 1/2" (14cm) in diameter and are 9" (23cm) long and take 2.5 Quarts (2.4L.) of oil. Available in your choice of glossy black coated or high luster polished finish.

012470 Vertical mount, polished
012471 Vertical mount, black
012473 Horizontal mount, black

01	HELMETS, LUGGAGE, AUDIO & MORE
02	SEAT
03	EXHAUST
04	ELECTRIC & LIGHT
05	ENGINE ELECTRICS
06	INTAKE
07	ENGINE
08	PRIMARY
09	TRANSMISSION
10	FINAL DRIVE
11	WHEELS & TIRE
12	BRAKE
13	FOOT CONTROL
14	HANDLEBAR
15	FRONT SUSPENSION
16	CHASSIS/FRAME & SHOCKS
17	FENDER & STRUTS
18	GAS TANK & INSTRUMENT
19	OIL TANK, FILTER & LINE
20	FASTENERS
21	MIRROR
22	WINDSHIELD
23	OIL, CHEMICALS & TOOLS
24	TECHTIPS & CROSS REF > ZPN
25	CROSS REF ZPN > PAGE
26	ALPHABETICAL INDEX



KRAFT/TECH ROUND OIL TANKS

These custom deep drawn oil tanks are handcrafted from 16 gauge steel and feature a battery box for Softail style batteries. They take 3 1/2 Quart (3.3L.) of oil and 1/8" NPT oil line fittings and come with a chrome plated cap. Tanks are 6 1/2" (16.5cm) in diameter and 11 3/4" (30cm) in width. They have gap concealing wings left and right and come in mirror chrome or ready-for-prep-and-paint raw steel. Available with equal length wings for stock Softail, Kraft/Tech Softail frames thru 180 rear tire, most aftermarket Softail style frames, and rigid (hardtail) frames for Big Twins. Also available to fit our Kraft/Tech Softail style frames for 200 thru 250 series rear tire, these have unequal length wings. All tanks fit with a stock Softail-style rear oil tank bracket.

Fits stock Softail 1984 thru 2017, Kraft/Tech Softail frames thru 180 rear tire and most aftermarket Softail style frames, as well as any rigid (hardtail) frame for Big Twins

751498 Raw, side fill

751499 Chrome, center fill

751466 Raw, center fill

Fits Kraft/Tech Softail style frames for 200 thru 250 series rear tire

751468 Raw, side fill

751469 Chrome, center fill

751470 Raw, center fill



CUSTOM STYLE OIL TANK BRACKETS FOR SOFTAILS

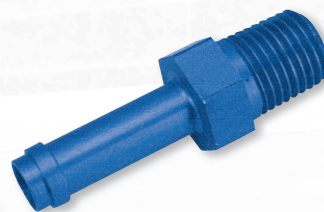
These brackets fit all 1984 thru 1999 Softail models, as well as most Custom frames. Kit contains front (OEM 62707-84) and rear bracket (OEM 62704-84). Show chromed finish.

160582 Custom style Softail oil tank bracket set

OIL TANK BRACKETS FOR SOFTAIL MODELS

An exact reproduction of the OEM oil tank brackets as used on all Softail models from 1984 thru 1999. Also fits most Custom frames. Kit contains the front and rear brackets, and are available in your choice of chrome plated or Stainless Steel for that cool custom look.

160302 Chrome oil tank bracket set (front and rear)



ALUMINUM 1/4" NPT OIL LINE FITTING

Blue anodized aluminum 1/4" NPT oil line fitting for use with 3/8" oil line. Also fits Pro-One oil filter adapter ZPN239425. Sold each.

237641 Aluminum 1/4" NPT oil fitting (each)



OIL/VENTLINE ADAPTOR FOR BIG TWINS

Adapts 1/8" NPT female to oil lines. Fits 1938 thru 1973 Big Twins.

012257 Oil/vent line adapter, zinc plated, set of 3 (OEM 63533-15)



"TIGHT SPOT" OIL LINE FITTINGS

Easy to install and turn, even in the tightest places on the top of your oil pump. These 1/8" NPT "Tight Spot" oil fittings are precision made from solid brass with fully machined oil passages for low restriction oil flow, and then brilliantly chromed for maximum visual effect. Install easily with a 5/16" Allen key. Set of 2.

347034 Genuine Zodiac Tight Spot oil line fittings, replaces OEM 26338-68A, 26561-81A & 26561-84A



AMERICAN MADE BREATHER HOSE CONNECTOR

45 Degrees plug to connect the breather hose to the crankcase. Fits all Big Twins from 1966 thru 1993.

234898 Connector 1/4" NPT (OEM 16302-81, S&S 50-8113)



OIL LINE FITTINGS

Chrome plated oil line fittings usable as OEM replacements or for custom applications. 1/8" NPT to 3/8" (9.5mm) spigot. Usable with our braided steel hose.

347033 Oil tank nipple 90 degrees 1/8" NPT (OEM 16304-87)

347035 Oil tank nipple straight 1/8" NPT (OEM 63533-41)



CHROME OIL LINE FITTING

Chrome plated brass barb fitting with 1/8" pipe thread. For use with 3/8" oil and gas lines (sold each).

233400 Chrome oil line fitting (OEM 63533-41)

01
HELMETS,
LUGGAGE,
AUDIO & MORE02
SEAT03
EXHAUST04
ELECTRIC
& LIGHT05
ENGINE
ELECTRICS06
INTAKE07
ENGINE08
PRIMARY09
TRANSMISSION10
FINAL DRIVE11
WHEELS &
TIRE12
BRAKE13
FOOT
CONTROL14
HANDLEBAR15
FRONT
SUSPENSION16
CHASSIS/
FRAME
& SHOCKS17
FENDER
& STRUTS18
GAS TANK &
INSTRUMENT19
OIL TANK, FILTER
& LINE20
FASTENERS21
MIRROR22
WINDSHIELD23
OIL, CHEMICALS
& TOOLS24
TECHTIPS &
CROSS REF
> ZPN25
CROSS REF
ZPN > PAGE26
ALPHABETICAL
INDEX

NEW



789468



RON'S BIKE SHOP

**OIL LINE RETAINERS FOR TWIN CAM SOFTAIL**

Exact copies of the OEM plastic retainers used to hold the oil lines on the oil tank and engine on all 2000-2017 Softail models.

789467 Lower return oil line retainer and lower feed line retainer, set of two (OEM 63632-00)

789468 Lower return oil line retainer and lower feed line retainer, set of five (OEM 63632-00)

789469 Upper oil line retainer or lower vent line retainer, set of two (OEM 63783-00)

RBS ALUMINUM OIL LINE FITTINGS FOR TWIN CAM SOFTAIL MODELS

This complete set of oil line fittings is a must when you want to install an oil cooler on a Twin Cam Softail. Fits all Twin Cam Softails 2000 thru 2017 and are available in plain aluminum or black anodized. Contains 3 fittings per set.

721938 Plain aluminum

721939 Black anodized



323057

323055

**BILLET OIL LINE FITTINGS FOR TWIN CAM SOFTAIL**

A must when you want to install an oil cooler on a Twin Cam Softail. These oil line fittings are precision machined from billet aluminum and come in natural finish, or anodized in black, red or blue. Sold in sets of 3 and fits all Twin Cam Softails 2000 thru 2017.

735018 Set of 3, natural aluminum

735029 Set of 3, red anodized

735030 Set of 3, blue anodized

735033 Set of 3, black anodized



2 YEARS WARRANTY

RADIUM CHROME OIL SPOUT KITS FOR TOURING

These Radium engine oil spout kits are machined from 6061-T6 billet aluminum and have a thread-in one piece dip stick, which eliminates dip stick blow-out on acceleration, a common problem for Touring models fitted with a large displacement (or Big Bore) engine. The custom oil spout design will allow a multitude of starter motors as well as many different style bearing doors and side covers currently on the market. Kits include stainless steel braided crankcase breather hose and fittings for easy installation.

323055 Kit for 1993 thru 1998 Evo Touring models

323056 Kit for 1999 thru 2001 Twin Cam Touring models

323057 Kit for 2002 thru 2006 Twin Cam Touring models

**STEEL BRAIDED HOSE**

1 Meter (3.3 feet) Oil and gas resistant braided neoprene hose. Available in 2 diameters. Seamless neoprene inside with steel braided outside.

012230 5/16" inside diameter (8.0mm) Stainless Steel

012231 3/8" inside diameter (9.5mm) Stainless Steel



NEW

**BRAIDED OIL AND FUEL HOSE**

Regular rubber hose with a braided stainless steel cover for use as oil- or fuel line. Sold in bulk length. Wrap masking tape around the hose where you want to cut it and then cut through the tape with a hacksaw. Install with Economy Seal Hose Ends.

789440 1/4" (6.35mm) inner diameter braided hose, 305cm length

789441 5/16" (7.94mm) inner diameter braided hose, 162cm length

789442 5/16" (7.94mm) inner diameter braided hose, 762cm length

789443 3/8" (9.53mm) inner diameter braided hose, 305cm length

789444 3/8" (9.53mm) inner diameter braided hose, 762cm length



NEW

REINFORCED BRAIDED OIL AND FUEL HOSE

Reinforced rubber hose with a braided stainless steel cover for use as oil- or fuel line. Sold in bulk length. Wrap masking tape around the hose where you want to cut it and then cut through the tape with a hacksaw. Install with Economy Seal Hose Ends.

789445 3/8" (9.53mm) inner diameter reinforced braided hose, 762cm length



NEW

**BLACK BRAIDED OIL AND FUEL HOSE**

Rubber hose with a black braided nylon cover for use as oil- or fuel line. Sold in bulk length. Wrap masking tape around the hose where you want to cut it and then cut through the tape with a hacksaw. Install with Economy Seal Hose Ends.

789446 3/8" (9.53mm) inner diameter black braided hose, 305cm length

789447 3/8" (9.53mm) inner diameter reinforced braided hose, 762cm length



BLACK NEOPRENE OIL/FUEL LINE
Black neoprene fabric reinforced fuel and oil line in 25 foot (7.5mtr) rolls. Available in 4 different diameters.

- 232450** Inside dia. 3/16" (5mm)
232451 Inside dia. 1/4" (6.5mm)
232452 Inside dia. 5/16" (8mm)
232453 Inside dia. 3/8" (9.5mm)



HOSE ENDS

These hose end are available in chrome, black, red or blue anodized. Choose between Grooved-, Hex- or Round style and create your own custom look fuel and oil hoses. Sold in 6 packs.

Grooved hose ends for 1/4" & 5/16" ID hoses

- 012400** Chrome
012401 Red
012402 Blue
012418 Black

Grooved hose ends for 3/8" ID hoses

- 012403** Chrome
012404 Red
012419 Black

Hex hose ends for 1/4" & 5/16" ID hoses

- 012406** Chrome
012407 Red
012408 Blue
012420 Black

Hex hose ends for 3/8" ID hoses

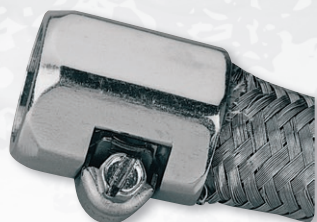
- 012409** Chrome
012410 Red
012411 Blue
012421 Black

Round hose ends for 1/4" & 5/16" ID hoses

- 012412** Chrome
012413 Red
012414 Blue
012422 Black

Round hose ends for 3/8" ID hoses

- 012415** Chrome
012416 Red
012423 Black



ECONOMY-SEAL HOSE END

Chrome plated hose finisher with clamp, provides a super custom look when used in combination with our steel braided hose. Sold in 10 packs.

- 012271** Fits 5/16" and 3/8" braided hose
012269 Fits 1/4" and 5/16" braided hose



2 YEARS WARRANTY

ANODIZED OIL AND FUEL LINE SEPARATORS

Beautifully anodized oil/fuel line separators, in a variety of four different colors. Separators have 5/8" (16mm) holes for either neoprene or braided oil and fuel lines. For neatly routing the oil/fuel lines on your motorcycle. Sold each.

- 061187** Ball burnish chrome
061188 Blue anodized
061189 Red anodized
061190 Black anodized



STAINLESS STEEL UNIVERSAL HOSE CLAMPS

High quality stainless steel hose clamps. Available for hoses with 7/32" outside diameter up to 1" outside diameter (5mm to 26mm). Sold in 10 packs.

Note: Diameters given are OUTSIDE DIAMETER.

- 061153** Fits 7/32" to 1/2" (5mm to 13mm)
061151 Fits 7/32" to 5/8" (5mm to 16mm)
061157 Fits 7/16" to 3/4" (11mm to 19mm)
061159 Fits 1/2" to 7/8" (12mm to 22mm)
061177 Fits 1/2" to 1" (12mm to 26mm)



JAGG BLACK HOSE CLAMPS

Black oil line clamps as supplied with most Jagg oil coolers. Fits 5/16" thru 3/8" inside diameter hose.

- 740222** Jagg black oil line clamps, 10-pack



2 YEARS WARRANTY

BILLET OIL LINE, FUEL LINE HOSE AND PLUG WIRE SEPARATORS

Designed to work with both 3/8" and 5/16" ID stainless steel hoses. The efficient and professional method of routing oil and fuel lines. Available for use with 2, or 3 hoses in both plain and slotted design. These separators are CNC machined from 6061-T6 billet aluminum are chrome plated.

- 061091** Plain, 2 hole
061092 Slotted, 2 hole
061093 Plain, 3 hole
061094 Slotted, 3 hole



OETIKER OETIKER'S OEM STYLE STAINLESS STEEL HOSE CLAMPS

High quality OEM style Stainless Steel hose clamps. This type clamps are used on most late models on the oil, fuel and vacuum lines. These clamps are made by Oetiker, one of the largest OEM suppliers of hose clamps in the world. Oetiker clamps are easy to install and provide a very clean look. Zodiac supplies these clamps in a (work) shop assortment box with 10 clamps of each of the nine sizes, complete with the special "two side operation" clamping pliers. The two side clamping pliers work parallel with the oil line as well as in a 90 degree angle. Clamps are separately available in bags of 50 pieces, the pliers can also be ordered separately.

700980 Hose Clamp Shop Assortment box

700981 Hose clamps, fit 7. 0-8. 7mm, 50 pack

700982 Hose clamps, fit 10. 3-12. 8mm, 50 pack

700983 Hose clamps, fit 11. 3-13. 8mm, 50 pack

700984 Hose clamps, fit 12. 3-14. 8mm, 50 pack

700985 Hose clamps, fit 13. 2-15. 7mm, 50 pack

700986 Hose clamps, fit 13. 7-16. 2mm, 50 pack

700987 Hose clamps, fit 14. 5-17. 0mm, 50 pack

700988 Hose clamps, fit 16. 6-19. 8mm, 50 pack

700989 Hose clamps, fit 17. 8-21. 0mm, 50 pack

700999 Two sides Oetiker pliers for hose clamps



OIL LINE SEALS FOR LATE EVOLUTION BIG TWIN

Genuine James Gaskets. Seals the stock steel oil lines in the oil filter housing on 1992 thru 1998 Dyna and Touring, and 1992 thru 1999 Softail. Available as seal only or seal-and-ferrule combination.

234634 Seal only, dealer 10-pack (OEM 63525-92)

234635 Seal and ferrule, dealer 5-pack (OEM 63528-92)





CHROME PLATED CABLE AND OIL LINE CLAMPS

Complete line of chrome plated clamps in a variety of sizes to fit every stock or custom frame. All clamps have a 13/32" (10.5mm) hole for either neoprene/braided oil lines or cables. The 1" (25.4mm) clamps fit most aftermarket frames, and can also be used on handlebars for custom applications. The 1 1/8" (28.6mm) clamps fit most 4 Speed Big Twin frames, Softail models 1984 to present, and Sportster models thru 1981. The 1 1/4" (32mm) clamps fit all Sportster models from 1982 to present, FXR models 1982 thru 1994, and Dyna models 1991 to present. Sold each.

- 061183** 1" clamp
- 061184** 1 1/8" clamp
- 061185** 1 1/4" clamp
- 061186** 1 3/8" clamp



OIL LINES FOR 45CI MODELS

Oil tank vent line (OEM 63570-37), motor oil pump feed line (OEM 63510-37) and motor oil pump return line (OEM 63507-38) in a convenient kit. Fits 1938 thru 1952 W, WLA and WLC, as well as 1937 thru 1974 Servicar.

- 745900** Cad plated
- 745901** Chrome



GOODRIDGE BRAIDED STAINLESS STEEL OIL LINE KITS

These kits are the ultimate upgrade for the oiling system on most Evolution Sportster models 1986 to present, Evolution Big Twins 1984 to present and Twin Cam models 1999 to present. The oil lines feature aircraft quality PTFE inner tube and braided stainless steel outer, using stainless alloy G-lite fittings. Each kit is tailor made for the specific application and quality inspected to assure leak proof and easy mounting. Seals for the oil line-to-tank fittings are separately available. These seals must be replaced every time the oil lines are disconnected.

Fits Evolution Sportster models

- 237566** 883 and 1200 4 Speed 1986 thru 1990

Fits Evolution Big Twin models

- 237565** FXR models 1992 thru 1994
- 237568** Softail models 1986 thru 1991
- 237564** Softail models 1992 thru 1999

Replacement parts

- 237571** Teflon oil seal set (fits all kits)



GOODRIDGE TEFLON OIL LINE WITH STAINLESS STEEL BRAIDED COVER

Teflon is compatible with all kinds of oils and chemicals and temperature resistant. Together with the corrosion and fire resistant braided stainless steel covering this Goodridge oil line provides aircraft quality with an 8.5mm (0.323") inner, and 11mm (0.439") outer diameter. Its clean looks make it ideal for use on motorcycles, and Goodridge's unique swivel-style oil line connectors make installation easier and cleaner than ever before, allowing you to create a reliable and extremely good looking oil line circuit. Lines can be made in any length desired, for use with or without oil cooler and are fully reusable. Oil line connectors are chrome plated.

- 741075** Stainless steel braided oil line, 5 meter
- 741076** Stainless steel braided oil line, 10 meter

Fittings and replacement parts

- 741066** Connector male straight 1/8" NPT
- 741067** Connector male straight 1/4" NPT
- 741068** Connector male 45° 1/8" NPT
- 741069** Connector male 90° 1/8" NPT
- 741070** Female straight connector to barb fittings, includes spiral washer and O-ring
- 741071** Replacement oil line olives as supplied with connectors 741066, 741067, 741068, 741069 & 741070. Dealer 10-pack
- 741072** Replacement oil line Spiral washers for barb fitting 741070. Dealer 10-pack
- 741073** Replacement oil line o-rings for barb fitting 741070. Dealer 10-pack



DRAIN PLUG FOR 4 SPEED BIG TWIN MODELS

This drain plug can be found on the bottom left hand side of all 1941 thru 1970 Big Twin models and on the oil pump body of 1968 thru 1984 Big Twin models. Sold each.

- 710864** Drain plug (OEM 700)



2 YEARS WARRANTY

OIL PRESSURE GAUGE

Chrome plated liquid filled gauge. The ultimate gauge available. The liquid eliminates needle bounce and gives you an exact reading at all times. The liquid also absorbs the vibration which prevents the gauge from breaking. Heavy-Duty mechanism construction.

- 169050** Oil pressure gauge



2 YEARS WARRANTY

LIQUID FILLED OIL PRESSURE GAUGE KITS

These oil pressure kits feature liquid filled gauges to eliminate needle bounce and absorb vibration with weather-resistant sealed lens with a chrome rim, extra Heavy Duty mechanism and 1 1/2" diameter stainless steel case. The gauge kits come complete with all necessary chrome fittings for bolt on installation. Gauges are suitable up-to 100 LBS.

- 233535** [A] Oil gauge kit, fits 1970 thru 1984 Big Twin Shovelheads
- 233536** [B] Oil gauge kit, fits 1957 thru 1985 XL models (rocker box mounting)
- 233537** [C] Oil gauge kit, fits 1957 thru 1985 XL models

01	HELMETS, LUGGAGE, AUDIO & MORE
02	SEAT
03	EXHAUST
04	ELECTRIC & LIGHT
05	ENGINE ELECTRICS
06	INTAKE
07	ENGINE
08	PRIMARY
09	TRANSMISSION
10	FINAL DRIVE
11	WHEELS & TIRE
12	BRAKE
13	FOOT CONTROL
14	HANDLEBAR
15	FRONT SUSPENSION
16	CHASSIS/FRAME & SHOCKS
17	FENDER & STRUTS
18	GAS TANK & INSTRUMENT
19	OIL TANK, FILTER & LINE
20	FASTENERS
21	MIRROR
22	WINDSHIELD
23	OIL, CHEMICALS & TOOLS
24	TECHTIPS & CROSS REF > ZPN
25	CROSS REF ZPN > PAGE
26	ALPHABETICAL INDEX



ROCKER BOX MOUNTED OIL PRESSURE GAUGES

These 1/2" (38mm) diameter oil pressure gauges come complete with a billet aluminum meter cup, billet bracket and a braided stainless steel pressure line to allow a fast installation on the rear rocker box, as well as an adapter to fit a pressure line to your engine. Available in chrome or black, complete with a 60 PSI liquid filled gauge to eliminate needle bounce and vibrations and feature a polished stainless steel bezel. Gauges with a 60 or 100 PSI scale are also available separately.

Fits 1984 thru 1999 Evolution Big Twins

169329 Chrome gauge kit
169330 Black gauge kit

Fits 1999 thru 2017 Twin Cam

169331 Chrome gauge kit
169332 Black gauge kit

Fits 1993 to present Evolution Sportster

169333 Chrome gauge kit
169334 Black gauge kit

Fits S&S V-Series engines

169335 Chrome gauge kit
169336 Black gauge kit

Replacement parts

169328 60 PSI oil pressure gauge only
169327 100 PSI oil pressure gauge only



ROCKER BOX OIL PRESSURE GAUGE FITTING

Unique chrome plated oil gauge adapter which permits mounting an oil pressure gauge on the rear rocker shaft. Now you can install your oil pressure gauge in a place where you can easily read it while riding your bike. Installation takes only a few minutes because the adapter replaces the stock rocker shaft end plug.

234636 Fits all 1957 thru 1970 Sportster
233409 Fits all 1971 thru 1985 Sportster models and 1971 thru 1984 Shovelhead Big Twin



ACCEL LIQUID-FILLED OIL PRESSURE GAUGE

Accel's 1/8" NPT rear mount liquid filled pressure gauges are premium quality all the way. The top of the 1 1/2" housing holds a pure glass lens that will not melt, distort, or fade. The housing is Stainless Steel and the solid brass internals are bathed in a vibration dampening glycerin. Available in your choice of 60 lb. or 100 lb. scale gauges in both polished and black. Both dial faces proudly display the Thunder Twin graphics in four color reproduction.

233820 Polished stainless gauge 60 pounds

747064 Black gauge 60 pounds

233819 Polished stainless gauge 100 pounds

747065 Black gauge 100 pounds



OIL PRESSURE GAUGE KIT FOR EVOLUTION BIG TWIN MOTORS

This kit allows you to read your oil pressure at a glance while riding your bike. Kit comes complete with gauge bracket, oil line and all fittings needed. Gauge bracket mounts under rear rocker cover bolt (longer rocker cover bolt may be needed). Oil line is connected to oil pressure switch hole which is located on the right hand side of the crankcase, behind the rear cylinder. If you don't want to give up your instrument or dash mounted oil pressure light our dual oil pressure gauge adapter must be used.

233411 Oil pressure gauge kit



ARLEN NESS ARLEN NESS OIL PRESSURE GAUGE KITS

Features stainless housing and glass lens, filled with vibration dampening glycerin for lasting performance. Billet bracket mounts oil pressure gauge to the rear rocker box. Complete kit includes Ness 1 1/2" (38mm) diameter 0-60# gauge, billet bracket and cone, stainless steel hose assembly and necessary mounting hardware.

Fits 1984-1999 Evo Big Twin

A15657 Radius chrome

A15676 Radius black

A15670 Deep Cut black

Fits 1999 thru 2017 Twin Cam

A15658 Radius chrome

A15675 Radius black

A15668 Deep Cut black

Fits 1993 to present Sportster

A15667 Deep Cut black

Replacement parts

A15649 Hose, 17 3/4" (45cm) long, fits 1999 thru 2017 Twin Cam

A15646 Hose, 29 1/2" (75cm) long, fits 1993 to present Sportster

A15653 Hose, 12" (30cm) long, fits 1984-1999 Big Twin and S&S V-Series engines

A15655 1 1/2" (38mm) diameter 0-60# gauge as in Radius and Grooved kits

A15665 1 1/2" (38mm) diameter 0-60# gauge as in Deep Cut kits



OIL PRESSURE GAUGE KIT FOR EVOLUTION BIG TWIN MODELS

This easy to install oil pressure gauge kit comes with a non-flexible chrome plated steel oil line that is connected to the oil pressure switch hole which is located on the right hand side of the crankcase. The oil pressure gauge is fitted on a bracket that mounts under the rear rocker cover bolt (longer rocker cover bolt may be required). If you do not want to give up your instrument or dash mounted oil pressure light a dual oil pressure gauge adapter ZPN234735 or 234736 must be used. Available as a complete kit including our ZPN169050 oil pressure gauge or as a oil line and fitting kit only. Fits 1984 thru 1999 Evolution Big Twin models.

710849 Complete kit with gauge

710862 Oil line and fitting kit without gauge



CHROME PLATED OIL GAUGE FITTINGS

Oil gauge fittings will fit 1970 thru 1999 74" & 80" motors (for motors with crossover pipes additional fittings are required). Kit comes with motor base fitting, O-ring, 45 degree fitting with pipe female end. Base and 45 degree fitting are also sold separately.

233401 Oil gauge fitting complete set

233402 Base only

233403 45 Degree fitting only



OIL GAUGE INSTALLATION PARTS

233404 Straight 1/8 NPT male to female adapter.

233405 90 Degree 1/8 NPT female elbow

233406 90 Degree 1/8 NPT male to female elbow

233407 1/8 NPT chrome plated pipe 1 1/2" (38mm) long

233408 1/8 NPT chrome plated pipe 3" (76mm) long



ONE-PIECE ALUMINUM OIL PRESSURE GAUGE ADAPTOR FOR LATE MODEL BIG TWINS

These adapters are made from 6061 aluminum that has been heat-treated to T6 and available in two different styles dual and single with two different finishes. The dual adapters are designed to permit the use of an oil pressure gauge without giving up your dash or instrument mounted oil pressure light. The single adapters are for use with an oil pressure gauge only. Both styles are available in satin aluminum finish or black anodized. Will fit all single cam Big Twin models from 1970 thru 1999 (stock exhaust with crossover tube may interfere). Sold each.

Satin Black

234735 234736 Dual adapter
234737 234738 Single adapter



LUCKY 7 OIL TANK PLUG

Made from billet aluminum with stainless steel dipstick. The use of two O-rings eliminates leaking. Fits all side-filled oil tanks. Looks great, especially in combination with other Lucky 7 accessories it gives your bike that real 50's greasers look.

741129 Lucky 7 Oil tank plug polished



DAYTONA OIL PLUG TEMPERATURE GAUGE

Classic 1" diameter white face oil plug and temperature gauges with black imprint.

Long dipstick

Fits 1970 thru 1984 FL, 1980 thru 1986 FLT, 1971 thru 1985 FX & FXE, 1982 thru 1983 FXR and 1970 thru 1978 XLCH Sportster and custom oil tanks with side-fill (OEM 62625-70A & 62635-79T).

120039 Scale in Celsius

Short Dipstick

237813 Fits 1982 thru 2004 Sportster and 1984 thru 1999 Softail models, scale in Fahrenheit
237814 Fits 2000 thru 2017 Softail except Rocker and Breakout, scale in Fahrenheit



Colony

OIL TANK DIPSTICKS FOR EARLY BIG TWIN

Colony duplicates or custom style oil filler caps with dipstick, come complete with gasket or o-ring. Available for 1936 thru 1940 E & EL, 1938 thru 1947 U, UL, UH & ULH and 1941 thru 1964 F & FL Big Twins. Also suitable for other oil tanks with 1 1/4"-12 thread.

781603 Fits 1936 thru 1940 Big Twin, cad plated (OEM 62625-36)

781604 Fits 1936 thru 1940 Big Twin, parkerized (OEM 62625-36)

781605 Fits 1941 thru 1964 Big Twin, cad plated (OEM 62625-36A)

781606 Fits 1941 thru 1964 Big Twin, parkerized (OEM 62625-36A)



CHROME FACETED OIL TANK PLUGS

These chrome faceted oil tank caps were manufactured to complement our popular line of faceted gas caps and crankcase breather assemblies.

301812 Plug without dipstick. Fits original Equipment oil tanks with side fill from 1965 to present and most custom oil tanks.



2 YEARS WARRANTY

OIL TANK REPLACEMENT CAP

Replacement filler cap, fits 1970 thru 1984 FL, 1980 thru 1986 FLT, 1971 thru 1985 FX & FXE, 1982 thru 1983 FXR, 1970 thru 1978 XLCH and 1979 thru 1999 XLH Sportster and most custom oil tanks with side-fill (OEM 62644-84T).

011160 Oil tank replacement cap



2 YEARS WARRANTY

UNIVERSAL OIL TANK DIPSTICKS

Take the guessing away with these universal oil tank dip sticks. Great for custom oil tanks with a 1 3/16" thru 1 1/4" (30-32mm) opening. Dipsticks feature a rubber plug, are topped off with a chrome cap and come in 3 different dipstick lengths.

301989 With 4 1/8" (105mm) dipstick

301988 With 4 5/8" (118mm) dipstick

301987 With 6 5/8" (168mm) dipstick



2 YEARS WARRANTY

OIL TANK TEMPERATURE GAUGES

The classic V-Twin logo enhances the dial face of these oil temperature gauges. The 1" diameter face is easy to read and accurately shows oil temperatures between 50 and 350 degrees Fahrenheit.

122042 Long model, fits 1970 thru 1984 FL, 1980 thru 1986 FLT, 1971 thru 1985 FX & FXE, 1982 thru 1983 FXR and 1970 thru 1978 XLCH Sportster and most custom tanks with side-fill



BLACK DUCK ENGINE OIL DIPSTICK FOR VICTORY

Direct replacement for the OEM dipstick. Features distinct Black Duck logo and is knurled to allow a good grip. Comes complete with O-ring. Handmade in Spain by Black Duck from 100% high quality brass.

748337 Engine oil dipstick for all 2006 to present Victory models, Satin Brass



2 YEARS WARRANTY

CHROME OIL TANK PLUGS WITH DIPSTICK

Add a touch of chrome to your oil tank. These are direct replacements for the OEM oil tank plug.

301993 Fits 1991 thru 1998 Dyna (OEM 62679-90, 62681-92A, 62685-95A)

301994 Fits 1993 thru 2006 Touring (OEM 62607-93 & 62856-99)

301998 Fits 2012 thru 2016 Touring & Trike (OEM 62700026)



781607 Chrome hex Knuckle nut style

781608 Copper crush washer, oil tank cap, Genuine James Gaskets, each (OEM 62628-36)

01	HELMETS, LUGGAGE, AUDIO & MORE
02	SEAT
03	EXHAUST
04	ELECTRIC & LIGHT
05	ENGINE ELECTRICS
06	INTAKE
07	ENGINE
08	PRIMARY
09	TRANSMISSION
10	FINAL DRIVE
11	WHEELS & TIRE
12	BRAKE
13	FOOT CONTROL
14	HANDLEBAR
15	FRONT SUSPENSION
16	CHASSIS/FRAME & SHOCKS
17	FENDER & STRUTS
18	GAS TANK & INSTRUMENT
19	OIL TANK, FILTER & LINE
20	FASTENERS
21	MIRROR
22	WINDSHIELD
23	OIL, CHEMICALS & TOOLS
24	TECHTIPS & CROSS REF > ZPN
25	CROSS REF ZPN > PAGE
26	ALPHABETICAL INDEX



OIL CHANGE AND SERVICE KITS

Easy does it! Just one part number to get everything you need for an engine oil change, a complete oil change or an oil change complete with a spark plugs change. We have selected for you the right type of Spectro oils, volumes, right oil filter in black or chrome and put these together in one box. We also have kits that include the correct spark plugs. And for the most demanding riders with a 2006 or later 6-speed transmission we have Platinum Plus kits available that include Spectro's special formulated noise-killing Platinum Gear oil. All kits are available with your choice of chrome plated oil filter or black painted oil filter.



Engine Oil Service Kit Spectro Heavy Duty 20W50 engine oil with chrome or black oil filter.

Chrome filter Black filter

740652 740653 For 1984 to present Sportster and 1984 thru 1999 Evolution Big Twin
740650 740651 For 1999 thru 2017 Twin Cam models



Engine, Drive Train Oil and Spark Plug Total Service Kit Spectro Heavy Duty 20W50 engine oil, chrome or black oil filter, Spectro primary oil, Spectro transmission oil plus spark plugs

Chrome filter Black filter

740662 740663 For 1984 to present Sportster, except XL1200S 4-plug
740666 740667 For 1984 thru 1999 Evolution Big Twin
740664 740665 For 1999 thru 2017 Twin Cam models



Engine and Drive Train Oil Service Kit

Spectro Heavy Duty 20W50 engine oil, Spectro primary oil, Spectro transmission oil and a chrome or black oil filter

Chrome filter Black filter

740654 740655 For 1984 to present Sportster
740658 740659 For 1984 thru 1999 Evolution Big Twin
740656 740657 For 1999 thru 2017 Twin Cam models



Platinum Drive Train Oil Service Kit Spectro Platinum "3 into 1" full synthetic engine, primary and transmission oil with a chrome or black oil filter

Chrome filter Black filter

780678 780679 For 1984 to present Sportster
740660 740661 For 1999 thru 2017 Twin Cam models
780660 780661 Fits 2017 to present Milwaukee Eight





Platinum Total Service Kit
Spectro Platinum "3 into 1" full
synthetic engine, primary and
transmission oil with a chrome or
black oil filter plus spark plugs

Chrome filter Black filter

780680 780681 For 1984 to present
Sportster, except
XL1200S 4-plug
740668 740669 Fits 1999 thru 2017
Twin Cam models,
spark plugs
780668 780669 Fits 2017 to present
Milwaukee Eight,
spark plugs



**Platinum Plus Total Service Kit for
the most demanding riders**
Spectro Platinum "3 into 1" full
synthetic engine oil, Heavy-Duty
primary oil and Platinum
Heavy-Duty transmission lubricant
with a chrome or black oil filter
plus spark plugs

Chrome filter Black filter

780674 780675 Fits 2006 thru 2017
Twin Cam 6-speed
models, spark plugs
780672 780673 Fits 2017 to present
Milwaukee Eight,
spark plugs



**Platinum Plus Drive Train
Oil Service Kit for the most
demanding riders**
Spectro Platinum "3 into 1" full
synthetic engine oil, Heavy-Duty
primary oil and noise-killing
Platinum Heavy-Duty transmission
lubricant with a chrome or black
oil filter

Chrome filter Black filter

780676 780677 Fits 2006 thru 2017
Twin Cam 6-speed
models
780670 780671 Fits 2017 to present
Milwaukee Eight

01
HELMETS,
LUGGAGE,
AUDIO & MORE

02
SEAT

03
EXHAUST

04
ELECTRIC
& LIGHT

05
ENGINE
ELECTRICS

06
INTAKE

07
ENGINE

08
PRIMARY

09
TRANSMISSION

10
FINAL DRIVE

11
WHEELS &
TIRE

12
BRAKE

13
FOOT
CONTROL

14
HANDLEBAR

15
FRONT
SUSPENSION

16
CHASSIS/
FRAME
& SHOCKS

17
FENDER
& STRUTS

18
GAS TANK &
INSTRUMENT

19
OIL TANK, FILTER
& LINE

20
FASTENERS

21
MIRROR

22
WINDSHIELD

23
OIL, CHEMICALS
& TOOLS

24
TECHTIPS &
CROSS REF
> ZPN

25
CROSS REF
ZPN > PAGE

26
ALPHABETICAL
INDEX



ARLEN NESS

ARLEN NESS DIP STICKS

CNC machined billet dipsticks from Arlen Ness are a direct OEM replacement. They feature a swiveling dipstick to monitor oil level.

2000-2006 Touring

Black	Chrome	
-	A70243	Beveled
A70240	A70241	Slot Track

2007-2016 Touring

Black	Chrome	
A70222	A70223	Beveled
-	A70221	Slot Track



BLACK DUCK OIL TANK CAPS

Black Duck parts and accessories are what you may call "Jewels for Wheels" and stand out of the crowd because of their perfect finish and laser etched Black Duck logo. These beautiful oil tank caps are a direct replacement for the original oil tank, but will fit most custom oil tanks as well. Available as a traditional round or custom hexagon cap, with a satin brass or 24 carat gold plated finish. Made and designed in Spain.

Fits 1984 thru 2003 Sportster

748208 Hexagon design, 24 Carat gold plated

748218 Round design, 24 Carat gold plated

748209 Hexagon design, satin brass

Fits 1984 thru 1999 Softail

748204 Hexagon design, 24 Carat gold plated

748214 Round design, 24 Carat gold plated

748205 Hexagon design, satin brass

748262 Hexagon design, black

Fits 2000 thru 2017 Softail except Rocker and Breakout

748206 Hexagon design, 24 Carat gold plated

748217 Round design, satin brass

748264 Hexagon design, black

Fits 1999 thru 2005 Dyna

748210 Hexagon design, 24 Carat gold plated

748220 Round design, 24 Carat gold plated

748211 Hexagon design, satin brass

748221 Round design, satin brass

2006 thru 2017 Dyna

748222 Round design, 24 Carat gold plated

748213 Hexagon design, satin brass

748223 Round design, satin brass



S&S OIL FILTERS

S&S oil filters are constructed in a sturdy steel canister, which houses the finest filtering media and internal components available. The canister is slightly smaller in diameter than stock filters to make them easier to remove and install. S&S filters are designed with a direct bypass valve that routes bypass oil directly to the filter exit. Direct bypass minimizes the amount of contaminants carried to the engine in the unfiltered bypass oil since the oil is not allowed to pick up contaminants by flowing over the "dirty" side of the filter media, as it is in some competitive filters. The filter media used in S&S oil filters has been selected to trap the smallest possible particles while maintaining the lowest restriction to oil flow. The nominal particle capture size is smaller than that of stock filters while the resistance to oil flow is nearly the same. The most important thing you can do to maximize the life of your engine is to keep your oil clean. Your motor oil picks up friction wear particles and combustion by-products. Regular oil changes are essential to keep contaminants from accumulating, but from one oil change to the next, your oil filter is your first line of defense against these wear causing particles. S&S filters are available in black or chrome finish for use on Evolution style as well as Twin Cam style engines.

For use on S&S V-series engines, Evolution Big Twins 1984 thru 1999, Sportster 1986 to present, Buell thru 1999 (OEM 63805-80A, 63796-77A)
750750 Black
788988 Black, 12-pack
750748 Chrome
788989 Chrome, 12-pack

For use on S&S T-series engines, Twin Cam engines 1999 thru 2017 and 2017 to present Milwaukee-Eight Touring (OEM 63731-99, 63798-99)
750749 Chrome
788991 Chrome, 12-pack
750751 Black
788990 Black, 12-pack



K&N WRENCH-OFF OIL FILTERS

K&N powersports oil filters are produced using the most profound quality assurance controlled manufacturing methods, assuring that every K&N oil filter is equal to or will exceed all OEM specifications. These filters contain a modern synthetic filter media, designed for ultimate flow with less pressure drop, yet engineered for outstanding filtration. High filter flow rates are important in racing vehicles where heavier grade oil is used and the oil is pumped much faster than in a standard vehicle. When the engine is circulating oil at high RPM rates, the high-flow oil filter helps reduce the loss of pressure through the filtering process. K&N oil filters are also ideal for high-end synthetic motor oil. Synthetic motor oil is said to offer improved flow performance at cold temperatures while providing superior protection against thermal degradation. K&N powersports 'spin-on' oil filters feature a heavy-duty metal can and a 17mm nut affixed onto the end that allows for easy installation and removal. The 17mm nut is crossed-drilled so racers can safety wire the filter to their bike.

Fits 2015 to present XG500 and XG750 (Street 500 & Street 750)
733842 Black (OEM 62700045)
733843 Chrome

Fits 1980 thru early 1986 Sportster
733822 Chrome (OEM 63782-80)

Fits all air cooled Buell models 2000 thru 2010
733824 Black (OEM 63806-00Y)

Fits all 1986 to present Sportster, all Buell models thru 1999, 1982 thru 1994 FXR, 1980 thru 1998 FLH and FLT, 1984 thru 1998 Softail
733820 Black (OEM 63805-80A)
733819 Chrome (OEM 63796-77A)

Fits 1991 thru 1998 Evolution Dyna
733823 Chrome (OEM 63813-90)

Fits 1999 Evolution Softail, 2000 thru 2017 Twin Cam Softail, 1999 thru 2017 Twin Cam Dyna, 1999 thru 2016 Twin Cam Touring and 2017 to present Milwaukee-Eight Touring
733818 Black (OEM 63731-99A)
733817 Chrome (OEM 63798-99A)

Fits 2002 thru 2017 V-Rod
733821 Chrome
733838 Black (OEM 63793-01K)

Assortment with one of each oil filter and foldable cardboard display with reference list on the back so you can provide your customer quick and easy guidance with the correct oil filter for almost every Harley produced since 1980. The display holds 9 filters, one for every model.
733825 Filter Assortment



K&N OIL FILTER FOR BUELL 1125R

Replaces the OEM crankcase fitted filter in water cooled Buell and EBR models.
789237 Oil filter (OEM Q1064. 1AM)



DROP-IN STYLE OIL FILTER CARTRIDGE FOR 1965 THRU 1982 BIG TWINS

This oil filter replaces all the internal components of the filter fitted in the oil tank on 1965 thru 1982 Big Twin models. So, in stead of the washer (OEM 6817), the upper seal (OEM 63881-67), the lower seal (OEM 63846-67), the filter element (OEM 63840-53) and the spring (OEM 63831-67), you just have to fit one part. This premium quality oil filter is made from the finest materials available and is specially designed for use with multi-grade as well as single grade oils, even heavy weight SAE 70. If you want premium quality oil filtering in your vintage Harley this is the filter to go for.

122009 Drop-in style oil filter
745089 Drop-in style oil filter, dealer 10-pack



GENUINE ZODIAC SPIN-ON OIL FILTERS

Spin-on oil filter elements are used on most models from 1980 to present. Genuine Zodiac oil filters are made with the finest filtering media and internal components available, provide excellent filtering efficiency and high levels of contaminant capacity for even the heaviest use. Available for most applications in 4 basic qualities, all manufactured after the highest quality standards and featuring a correctly calibrated pressure relief valve.

Classic stock replacement filters. Feature automotive quality 30 Micron filtration paper. Available in chrome or black.

Magnetic Double Action. These filters feature 30 Micron filtration paper, 30% more filtering surface, and a magnetic ring tower. The magnetic ring tower is an extra safety device that even holds steel particles of under 10 micron, Chrome plated.

TC Quality. Introduced in 1999 on the Twin Cam engine. These filters feature 10 Micron filtration paper and re-designed pressure relief valve, and Anti-Drain Back Valve. Available in chrome or black.

Magnetic Double Action TC Quality. For those "who do not want to take any chances". These filters feature 10 Micron filtration paper, and 30% more filtering surface, and a magnetic ring tower that even holds steel particles of under 10 micron, Chrome plated.

Dealer Note: Our most popular filters are now also available in attractively priced dealer 10-packs.

1980 thru early 1986 Sportster models, short filter (OEM 63810-80A & 63782-80)
121011 Chrome, stock 30 Micron
745087 Chrome, stock 30 Micron, dealer 10-pack
121187 Black, stock 30 Micron
745088 Black, stock 30 Micron, dealer 10-pack
121192 Chrome, Magnetic 30 Micron

01	HELMETS, LUGGAGE, AUDIO & MORE
02	SEAT
03	EXHAUST
04	ELECTRIC & LIGHT
05	ENGINE ELECTRICS
06	INTAKE
07	ENGINE
08	PRIMARY
09	TRANSMISSION
10	FINAL DRIVE
11	WHEELS & TIRE
12	BRAKE
13	FOOT CONTROL
14	HANDLEBAR
15	FRONT SUSPENSION
16	CHASSIS/FRAME & SHOCKS
17	FENDER & STRUTS
18	GAS TANK & INSTRUMENT
19	OIL TANK, FILTER & LINE
20	FASTENERS
21	MIRROR
22	WINDSHIELD
23	OIL, CHEMICALS & TOOLS
24	TECHTIPS & CROSS REF > ZPN
25	CROSS REF ZPN > PAGE
26	ALPHABETICAL INDEX

- 01 Late 1986 to present Sportster models, long filter (OEM 63805-80A, 63796-77A)**
121188 Black, stock 30 Micron
745082 Black, stock 30 Micron, dealer 10-pack
122008 Chrome, stock 30 Micron, approx. 1/2" shorter than an OEM filter
04 745081 Chrome, stock 30 Micron, approx. 1/2" shorter than an OEM filter, dealer 10-pack
05 121193 Chrome Magnetic, 30 Micron

All 2002 thru 2017 V-Rod (OEM 63793-01K)
122013 Black, 10 Micron
122012 Chrome, 10 Micron

- 1982 thru 1994 FXR models, long filter (OEM 63805-80A, 63796-77A)**
121188 Black, stock 30 Micron
745082 Black, stock 30 Micron, dealer 10-pack
122008 Chrome, stock 30 Micron, approx. 1/2" shorter than an OEM filter
10 745081 Chrome, stock 30 Micron, approx. 1/2" shorter than an OEM filter, dealer 10-pack
11 121193 Chrome Magnetic, 30 Micron

- 1991 thru 1998 Dyna models, extra long filter (OEM 63812-90 & 63813-90)**
121190 Black, stock 30 Micron
121189 Chrome, stock 30 Micron
745086 Chrome, stock 30 Micron, dealer 10-pack
14 121194 Chrome, Magnetic Double Action 30 Micron

- 1999 thru 2017 Dyna, long filter (OEM 63731-99 & 63798-99)**
120114 Black, TC Quality 10 Micron
745085 Black, TC Quality 10 Micron, dealer 10-pack
120112 Chrome, TC Quality 10 Micron
745083 Chrome, TC Quality 10 Micron, dealer 10-pack
120113 Chrome, Magnetic 10 Micron

- 1980 thru 1998 FLT and FLHT models, long filter (OEM 63805-80A, 63796-77A)**
121188 Black, stock 30 Micron
745082 Black, stock 30 Micron, dealer 10-pack
122008 Chrome, stock 30 Micron, approx. 1/2" shorter than an OEM filter
21 745081 Chrome, stock 30 Micron, approx. 1/2" shorter than an OEM filter, dealer 10-pack
22 121193 Chrome Magnetic, 30 Micron

- 1999 thru 2016 Twin Cam Touring and 2017 to present Milwaukee Eight Touring, long filter (OEM 63731-99 & 63798-99)**
120114 Black, TC Quality 10 Micron
745085 Black, TC Quality 10 Micron, dealer 10-pack
120112 Chrome, TC Quality 10 Micron
745083 Chrome, TC Quality 10 Micron, dealer 10-pack
120113 Chrome, Magnetic 10 Micron

- 1984 thru 1999 Softail models, long filter (OEM 63805-80A, 63796-77A)**
121188 Black, stock 30 Micron
745082 Black, stock 30 Micron, dealer 10-pack
121020 Chrome, stock 30 Micron
745080 Chrome, stock 30 Micron, dealer 10-pack
122008 Chrome, stock 30 Micron, approx. 1/2" shorter than an OEM filter
745081 Chrome, stock 30 Micron, approx. 1/2" shorter than an OEM filter, dealer 10-pack
121193 Chrome Magnetic, 30 Micron

- 2000 thru 2017 Twin Cam and 2018 to present Milwaukee Eight Softail models, long filter (OEM 63731-99 & 63798-99)**
120114 Black, TC Quality 10 Micron
745085 Black, TC Quality 10 Micron, dealer 10-pack
120112 Chrome, TC Quality 10 Micron
745083 Chrome, TC Quality 10 Micron, dealer 10-pack
120113 Chrome, Magnetic 10 Micron

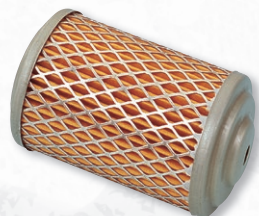
- 1982 thru 1984 FL and FLH models, short filter (OEM 63810-80A & 63782-80)**
121011 Chrome, stock 30 Micron
745087 Chrome, stock 30 Micron, dealer 10-pack
121187 Black, stock 30 Micron
745088 Black, stock 30 Micron, dealer 10-pack
121192 Chrome, Magnetic 30 Micron

- Late 1982 thru 1986 FX, FXE, FXEF, FXWG and FXS models, short filter (OEM 63810-80A & 63782-80)**
121011 Chrome, stock 30 Micron
745087 Chrome, stock 30 Micron, dealer 10-pack
121187 Black, stock 30 Micron
745088 Black, stock 30 Micron, dealer 10-pack
121192 Chrome, Magnetic 30 Micron

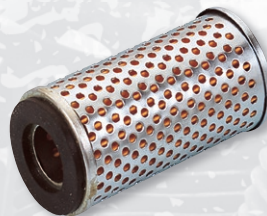


OIL FILTERS FOR HARLEY-DAVIDSON

Replacement oil filters for all models with in tank oil filter canisters 1954 thru 1983, and the early style original oil filter kit as used on the 1940 thru 1964 Big Twin models. Our perforated paper oil filters are made from automotive quality impregnated paper which is much more effective and has the lowest restriction.



- 120027** Fits Big Twin with remote oil filter unit and our Early style oil filter kit (OEM 63840-48A)



- 120004** Fits all Big Twin models with filter in oil tank (OEM 63840-53)
745084 Fits all Big Twin models with filter in oil tank (OEM 63840-53) Dealer 10-pack



OIL FILTERS FOR INDIAN & VICTORY

Genuine Zodiac oil filters are made with the finest filtering media and internal components available, provide excellent filtering efficiency and high levels of contaminant capacity for even the heaviest use.

- Fits 2002 thru 2017 Victory models, except Octane**
122015 Black (OEM 2540086)
122014 Chrome

Fits 2014 to present Indian models & Victory Octane

- 122018** Black (OEM 2521421 & 2520799)
122017 Chrome



2 YEARS WARRANTY

CHROME OIL FILTER HOUSING

This chrome plated oil filter housing adds a highlight to the front of your engine. Replaces the plain black or plain silver painted oil filter housing on all Evolution Big Twins from 1992 thru 1999. Must be used with braided steel or neoprene oil lines (OEM 26381-92A).

- 120052** Chrome Oil filter housing



S&S OIL FILTER MOUNT

This billet oil filter mounting bracket can solve a common problem for engine builders and custom bike builders alike. It fits any generator engine with 5/16" generator mounting holes, and it replaces the hard to find oil filter bracket for 1986-1990 Harley-Davidson Sportster models. This part is needed for any engine build with S&S crankcases for Sportster or Buell motorcycles, including the S&S SB-Series engines. On a generator style Big Twin engine the filter bracket bolts to the generator mounting pad in place of the generator. This is a must for alternator/generator engines that use an alternator charging system, or straight generator engines with magneto ignitions and no charging system. The oil filter bracket seals off the cam chest and provides a convenient place too for a spin on oil filter. The bracket is machined for easy routing of an oil cooler in all applications, and accepts the stock oil pressure sending switch on Sportster models.

- 751510** Oil Filter Mount





HEX HEAD SPIN-ON OIL FILTERS

Spin-on oil filter elements are used on most models from 1980 to present. Unlike stock and most replacement filters these ones feature a hex head for easier installation and removal. We offer filters in 4 basic qualities, all manufactured after the highest quality standards and featuring a correctly calibrated pressure relief valve.

Classic stock replacement filters

Feature automotive quality 30 Micron filtration paper. Available in chrome plated or black painted.

Magnetic Double Action

These filters feature 30 Micron filtration paper, 30% more filtering surface, and a magnetic ring tower. The magnetic ring tower is an extra safety device that even holds steel particles of under 10 micron, parts that are not held by any filtration paper. Chrome plated.

TC Quality

These filters were introduced in 1999 on the Twin Cam engine. These filters feature 10 Micron filtration paper and re-designed pressure relief valve, and Anti-Drain Back Valve. Available in chrome plated or black painted.

Magnetic Double Action TC Quality

For those "who do not want to take any chances". These filters feature 10 Micron filtration paper, AND 30% more filtering surface, AND a magnetic ring tower that even holds steel particles of under 10 micron, parts that are not held by any filtration paper. Chrome plated.

1980 thru early 1986 Sportster models, short filter (OEM 63810-80A & 63782-80)

- 120141** Chrome, stock 30 Micron
120149 Black, stock 30 Micron

Late 1986 to present Sportster models, long filter (OEM 63805-80A, 63796-77A)

- 120151** Black, stock 30 Micron
120143 Chrome, stock 30 Micron
120150 Black Magnetic Double Action, 30 Micron

1982 thru 1994 FXR models, long filter (OEM 63805-80A, 63796-77A)

- 120151** Black, stock 30 Micron
120143 Chrome, stock 30 Micron
120150 Black Magnetic Double Action, 30 Micron

1991 thru 1998 Dyna models, extra long filter (OEM 63812-90 & 63813-90)

- 120147** Chrome, stock 30 Micron
120154 Black, Magnetic Double Action 30 Micron
120155 Black, stock 30 Micron
120146 Chrome, Magnetic Double Action 30 Micron

1999 thru 2017 Dyna models, long filter (OEM 63731-99 & 63798-99)

- 120153** Black, TC Quality 10 Micron
120145 Chrome, TC Quality 10 Micron
120144 Chrome, Magnetic Double Action 10 Micron
120152 Black Magnetic Double Action, 10 Micron

1980 thru 1998 FLT and FLHT models, long filter (OEM 63805-80A, 63796-77A)

- 120151** Black, stock 30 Micron
120143 Chrome, stock 30 Micron
120150 Black Magnetic Double Action, 30 Micron

1999 thru 2016 Twin Cam Touring and 2017 to present Milwaukee-Eight Touring, long filter (OEM 63731-99 & 63798-99)

- 120153** Black, TC Quality 10 Micron
120145 Chrome, TC Quality 10 Micron
120144 Chrome, Magnetic Double Action 10 Micron
120152 Black Magnetic Double Action, 10 Micron

1984 thru 1999 Softail models, long filter (OEM 63805-80A, 63796-77A)

- 120151** Black, stock 30 Micron
120143 Chrome, stock 30 Micron
120150 Black Magnetic Double Action, 30 Micron

2000 thru 2017 Twin Cam and 2018 to present Milwaukee Eight Softail models, long filter (OEM 63731-99 & 63798-99)

- 120153** Black, TC Quality 10 Micron
120145 Chrome, TC Quality 10 Micron
120144 Chrome, Magnetic Double Action 10 Micron
120152 Black Magnetic Double Action, 10 Micron

1982 thru 1984 FL and FLH models, short filter (OEM 63810-80A & 63782-80)

- 120141** Chrome, stock 30 Micron
120149 Black, stock 30 Micron
120140 Chrome, Magnetic Double Action 30 Micron
120148 Black, Magnetic Double Action 30 Micron

Late 1982 thru 1986 FX, FXE, FXEF, FXWG and FXS models, short filter (OEM 63810-80A & 63782-80)

- 120141** Chrome, stock 30 Micron
120149 Black, stock 30 Micron
120140 Chrome, Magnetic Double Action 30 Micron
120148 Black, Magnetic Double Action 30 Micron



S&S BILLET OIL FILTER BRACKET KIT FOR TWIN CAM

Machined from solid billet aluminum and designed for use on the 124CI Twin Cam A Style engines from S&S. Also make a great cosmetic and functional upgrade for engines build with stock Twin Cam A crankcases. These filter brackets have some advantages compared to stock brackets. First of all there are no voids or other casting defects in the material to cause leaks. Secondly, the position of the filter has been shifted slightly to create additional clearance between filter body and the crankcase. This results in easier filter installation and removal. In third place, each filter bracket is machined to adopt an oil cooler in the pressure side of the system. An oil cooler is especially useful for Big Inch applications, but is also a great idea when towing a trailer or just riding in hot weather conditions. Kit comes complete with O-rings, pipe plugs, hose fittings, and all necessary mounting hardware. For applications without oil coolers, simply install the pipe plugs in the threaded holes of the filter bracket, instead of the hose fittings. Polished finish.

750575 Oil filter bracket kit



CUSTOM BILLET RE-USABLE ALUMINUM OIL FILTER KIT

Gain up to 5% of horsepower by installing this filterkit. It allows the oil to flow more freely, which reduces oil levels in the engine sump, thereby reducing oil/flywheel obstruction. The filter is re-usable making it the last oil filter you will ever purchase. It pre-cleans the oil by grabbing metal particles with three high power magnets. Then it filters the oil by utilizing a fine stainless steel woven mesh element to catch particles as small as 25

microns. A smart feature is the so-called pressure by-pass valve to prevent high oil pressure conditions caused by extremely cold weather or really dirty oil. We have three styles available chromed, polished or black anodized with highlighted polished accents. The filter is for use on Evolution Sportster, Evolution Big Twin, Twin Cam and Milwaukee Eight engines.

120243 Chrome

120244 Black anodized with highlighted accents

120245 Polished

Replacement parts

120239 Viton seal

120252 Filter spring



CHROME PLATED BILLET ALUMINUM OIL FILTER KIT FOR 4 SPEED BIG TWIN AND EVOLUTION SOFTAIL

This chrome plated oil filter kit bolts to the lower front motor mount. Kit comes complete with chrome plated billet aluminum base plate, chrome hose fittings, spin-on chrome oil filter, and mounting bolts. OEM and most aftermarket type regulator bolts straight to it. Kit fits all 1975 thru 1984 4 Speed Big Twins, and 1984 thru 1999 Evolution Big Twin models.

120019 Complete kit

Replacement oil filter

121011 Chrome, stock 30 Micron



JAGG HYPERFLOW LIFETIME OIL FILTERS

These extremely high-performing oil filters, originally designed for race vehicles, are engineered with Jagg's HyperFlow Technology to balance performance and flow for your motorcycle, just like a Jagg oil cooler. High flow volume, low pressure drop, absolute filtration, and a strong rare-earth magnet combine to deliver

01	HELMETS, LUGGAGE, AUDIO & MORE
02	SEAT
03	EXHAUST
04	ELECTRIC & LIGHT
05	ENGINE ELECTRICS
06	INTAKE
07	ENGINE
08	PRIMARY
09	TRANSMISSION
10	FINAL DRIVE
11	WHEELS & TIRE
12	BRAKE
13	FOOT CONTROL
14	HANDLEBAR
15	FRONT SUSPENSION
16	CHASSIS/FRAME & SHOCKS
17	FENDER & STRUTS
18	GAS TANK & INSTRUMENT
19	OIL TANK, FILTER & LINE
20	FASTENERS
21	MIRROR
22	WINDSHIELD
23	OIL, CHEMICALS & TOOLS
24	TECHTIPS & CROSS REF > ZPN
25	CROSS REF ZPN > PAGE
26	ALPHABETICAL INDEX

unmatched performance and protection. Precision CNC-machined billet aluminum body offers a knurled non-slip grip surface and a hex boss for easy removal. Features a cleanable and reusable filter element with 30 micron absolute filtration and built-in rare earth magnet. Jagg claims a 8-10x greater oil flow as with OEM filters. Fits most Harley-Davidson, including Twin Cam, and other applications with a 3/4-16 filter mount.

740099 Jagg HyperFlow Lifetime oil filter

paper as filtering media. This guarantees a consistent flow under all conditions including extreme heat, presence of water and cold start ups. Best of all is that you can just simply wash the filter element and use it over and over again. Fits all Evolution Sportster, Evolution Big Twin, Twin Cam and Milwaukee Eight engines.

A03460 Deep Cut, chrome

A03461 Deep Cut, black

A03462 Beveled, chrome

A03463 Beveled, black

A03465 Replacement spring and seal

A03466 Replacement filter element



GENUINE ZODIAC 2 YEARS WARRANTY
CHROME CUSTOM STYLE OIL FILTER ADAPTER

Made from billet aluminum with a show chrome finish. This oil filter adapter fits OEM and aftermarket 1992 thru 1999 style Evolution Big Twin crankcases with the OEM style front mounting bosses. Use with your stock oil filter adapter nut or order one separately.

120126 Custom oil filter adapter

234509 Oil filter adapter nut (OEM 26352-95A)



GENUINE ZODIAC 2 YEARS WARRANTY
EARLY STYLE BIG TWIN OIL FILTER KITS

These filter kits feature barb style hose fittings which can be substituted with screw in fittings to accept OEM style metal lines. Fits 1940 thru 1964 Big Twins. Year-specific mounting bracket must be ordered separately.

120050 Oil filter kit with polished top and chrome cannister (OEM 63800-48)

758336 Oil filter kit with chrome top and cannister (OEM 63800-48)

758337 Oil filter kit with black top and chrome cannister (OEM 63800-48)

758341 Zinc mounting bracket, 1940 thru 1957 Big Twin (OEM 63860-50)



Deep Cut

Beveled



758338 Chrome mounting bracket, 1940 thru 1957 Big Twin (OEM 63860-50)

120093 Chrome mounting bracket, 1958 thru 1964 Big Twin (OEM 63860-58A)

Replacement parts

120027 Oil filter element (OEM 63840-48A)

742489 Oil filter cap seal, molded dual seal rubber, 5-pack (OEM 63809-48)

758339 Oil filter retainer seal, 10-pack (OEM 63848-48)

758340 Filter bolt washer, 10-pack (OEM 63874-50)

700385 Lower filter nut washer, 10-pack (OEM 63858-49)

700381 Lower filter nut washer, copper, 10-pack (OEM 63858-49)

and replacing these with the included stainless steel nuts. All kits come complete with all necessary mounting hardware pre-installed. Oil filter element must be ordered separately.

Oil filter bracket kits

711614 [A] Forwards facing on 4 Speed transmission

711615 [B] Backwards facing on 4 Speed transmission

711616 [C] Forwards facing in front of crankcase

Oil filter elements

122008 Chrome, stock 30 Micron, approx. 1/2" shorter than an OEM filter

121193 Chrome Magnetic, 30 Micron

121189 Chrome, stock 30 Micron

121194 Chrome, Magnetic Double Action 30 Micron

GENUINE ZODIAC 2 YEARS WARRANTY

"SLIMLINE" OIL FILTER ADAPTER KIT

Good looking and competitively priced oil filter adapter kit. Comes complete with mounting hardware and oil line fittings. Fits 1992 thru 1999 Evolution Big Twin Engines. The adapter plate is made from .500" thick billet aluminum and has a chrome finish.

120116 Slimline oil filter adapter kit



GENUINE ZODIAC 2 YEARS WARRANTY

DELUXE CHROME OIL FILTER BRACKET COVERS

These stamped steel covers were designed to fit like a second skin over original equipment oil filter housing. Includes a separate cover for the frame boss which holds the housing and special chrome mounting hardware. Fits 1986 Heritage Softail and all Softail models 1987 thru 1991.

301889 Deluxe oil filter cover kit

301870 Cover only



OIL FILTER BRACKET KITS FOR 4 SPEED MODELS AND ALL FRONT MOTOR MOUNTS

These CNC machined billet aluminum oil filter bracket kits enable you to mount a variety of oil filter elements. We offer 3 different styles of oil filter brackets, the first 2 are to be mounted on the kicker cover of a 4 Speed transmission with your choice of filter on the front wheel side, or on the rear wheel side. Mounting these kits requires removal of 3 studs from the transmission case and replacing these with the included bolts and spacers. The third kit can be used on all models, including Softails, which do not have the regulator mounted between the front down tubes. This kit allows you to have the filter facing forward in front of the crankcase. Installation of this kit requires removal of the engine mounting screws



CHROME OIL FILTER HOUSING COVERS

These stamped steel covers were made to fit like a second skin over the OEM oil filter housing on your late-model Big Twin. They provide an economical means of chroming the right side of your bike and install in minutes. The later version is held in place with silicone (included in the kit) and the earlier version is pinched between the frame and the filter housing when the mounting bolt is tightened.

301869 Fits all Big Twin models from 1992 thru 1999

301870 Fits 1986 Heritage Softail and all Softail models from 1987 thru 1991



RBS BILLET ALUMINUM OIL COOLERS

These vertical mount oil coolers are CNC machined from billet aluminum and are supplied in pairs. They are very easy to mount as the integrated brackets bolt straight on to the frame down tubes, one right and one left to have a balanced look. Four stunning designs to choose from: the 190mm long "Finned" design, the 280mm long "Slimline" design, the 190mm long classic "Round" design for Softail and FXR as well as the 150mm long classic "Round" design for Sportster and the 150mm long "Dumb-bell" design for Sportster. All 3 styles are available in your choice of high-gloss polished or black moderate to hot climates. Oil lines must be ordered separately.



Slimline

Slimline 280mm long, fits 1984 thru 1999 FXST Softail models

700629 Pair, Polished finish

700632 Pair, Black anodized finish

Slimline 280mm long, fits 2000 thru 2017 FLST and FXST Twin Cam Softail models

721882 Pair, polished finish

721883 Pair, black anodized finish

Slimline Single Clamp



Slimline 280mm long, fits FXR models

700648 Pair, black anodized finish



Round Dual Clamp 150 mm

Round 150mm long, fits Sportster and 1991 thru 2005 Dyna models

721886 Pair, polished finish



Round Dual Clamp 190 mm

Round 190mm long, fits FXST Softail models thru 1999

700630 Pair, polished finish



RBS CUSTOM STYLE OIL COOLER

Custom style oil coolers made from billet aluminum. The solid fins on these coolers guarantee for maximum heat reduction. Mounts straight onto the downtubes of the frame with an integrated clamp. Zodiac offers coolers with 28mm and 35mm clamps. Total length is 15 1/2" (390mm). Available in black or polished finish. Oil lines must be purchased separately. Sold in pairs.

722462 Polished, 28mm clamp

722463 Black, 28mm clamp

722466 Polished, 35mm clamp



RBS OIL COOLERS FOR TOURING MODELS

Billet aluminum oil coolers to fit FLH/FLT series models equipped with fairing lowers. The CNC machined oil coolers are 132mm long to be mounted vertically on the fairing lowers. Supplied in pairs including all required oil line fittings. These oil coolers are recommended to use in combination with oil cooler thermostats ZPN700645 or ZPN721891. Oil cooler thermostats are sold separately.

733627 Oil cooler set, black



RBS ALUMINUM OIL LINE FITTINGS FOR TWIN CAM SOFTAIL MODELS

This complete set of oil line fittings is a must when you want to install an oil cooler on a Twin Cam Softail. Fits all Twin Cam Softails 2000 thru 2017 and are available in plain aluminum or black anodized. Contains 3 fittings per set.

721938 Plain aluminum

721939 Black anodized



RBS FILTER-MOUNT OIL COOLER THERMOSTAT

Oil coolers with a thermostat fitted give a big advantage to their engines compared to those without. Optimum oil and consequently engine operating temperature is achieved much faster with a thermostat fitted. These die-cast aluminum oil filter mounts with integrated thermostat are a perfect solution and are easy to fit. Attaches to the stock oil filter mount with the provided adapter and has angled oil line fittings. **Note:** Due to limited space on Twin Cam models this thermostat must be used with ZPN121192 oil filter.

700645 Fits Big Twin 1984 thru 1999, Sportster 1984 to present and all Buells, except XB series

721891 Fits Twin Cam 1999 thru 2017



PRO-ONE CHROME PLATED BILLET OIL COOLER

Combine form and functionality with this chrome plated billet aluminum oil cooler. The stylish design frame clamp fits on the front frame down tube and the increased oil cooling increases engine reliability. The oil cooler accepts A/N type fittings. Pro-One oil coolers matches perfectly with the Pro-One chrome plated billet stash-tubes as found elsewhere in this catalog. Fits 1", 1 1/8" and 1 1/4" tubes.

239557 Billet oil cooler

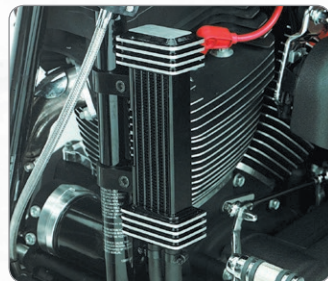


BILLET OIL LINE FITTINGS FOR TWIN CAM SOFTAIL

A must when you want to install an oil cooler on a Twin Cam Softail. These oil line fittings are precision machined from billet aluminum and come in natural finish, or anodized in black, red or blue. Sold in sets of 3 and fits all Twin Cam Softails 2000 thru 2017.

- 01 HELMETS, LUGGAGE, AUDIO & MORE
- 02 SEAT
- 03 EXHAUST
- 04 ELECTRIC & LIGHT
- 05 ENGINE ELECTRICS
- 06 INTAKE
- 07 ENGINE
- 08 PRIMARY
- 09 TRANSMISSION
- 10 FINAL DRIVE
- 11 WHEELS & TIRE
- 12 BRAKE
- 13 FOOT CONTROL
- 14 HANDLEBAR
- 15 FRONT SUSPENSION
- 16 CHASSIS/FRAME & SHOCKS
- 17 FENDER & STRUTS
- 18 GAS TANK & INSTRUMENT
- 19 OIL TANK, FILTER & LINE
- 20 FASTENERS
- 21 MIRROR
- 22 WINDSHIELD
- 23 OIL, CHEMICALS & TOOLS
- 24 TECHTIPS & CROSS REF > ZPN
- 25 CROSS REF ZPN > PAGE
- 26 ALPHABETICAL INDEX

- 735018** Set of 3, natural aluminum
- 735029** Set of 3, red anodized
- 735030** Set of 3, blue anodized
- 735033** Set of 3, black anodized



JAGG OIL COOLERS

JAGG designed oil coolers provide simple and effective reduction of oil temperature to safe operating levels for maximum life of both oil and engine. Unless otherwise noted Jagg designed oil coolers come complete with hardware and easy-to-follow installation instructions. Specially designed turbulators in each oil passageway gently stir oil, exposing it to more critical heat dissipation surface area for superior cooling with no increase in oil pressure restriction. Additionally, highly concentrated mini-louvered air fins allow maximum heat transfer. Sleek High-Tech Uralite clamps insure trouble free mounting and cooler insulation from vibration.

Note: Installation on Twin Cam models requires use of ZPN 740078 Offset Oil Filter Adapter to access oil supply for cooler installation.

Note: Installation on 2004 to present Sportster models requires use of ZPN 740225 Oil Filter Adapter to access oil supply for cooler installation.

Jagg #1000 Series Deluxe Oil Coolers

Engineered for performance, the "Deluxe" Jagg oil cooler was designed with polished billet fin end caps to compliment the brushed cylinder fins on your motor.

Fits 1957 to present Sportster, 1955 thru 1964 Panhead, 1965 thru 1984 Shovelhead, 1982 thru 1994 FXR, 1984 thru 2017 Softail, 1984-2016 Dresser and Road King models, and 1991 thru 2017 Dyna
740070 Black
740086 Chrome



NEW



THUNDERMAX OIL COOLER FAN FOR MILWAUKEE EIGHT

The ThunderMax oil cooler fan is the answer to overheating on oil cooled Milwaukee Eight engines in Touring models. The fan works by using the engine temperature and vehicle speed sensor to reduce heat and keep your Milwaukee Eight engine running cool. Installs in about 15 minutes and plugs directly into a ThunderMax ECM. Motorcycles with the stock ECM require flashing the ECM with the Harley Digital Technician or Diag-4-Bike Version 19.1 or later.

723233 ThunderMax Oil Cooler Fan, fits 2017 to present Touring. Does not fit models with a Twin Cooled Milwaukee Eight motor, nor 2018 CVO and 2019 CVO Street Glide



JAGG 10-ROW OIL COOLERS

The Jagg 10-row Low Mount oil cooler system is designed to deliver - and keep a low-profile. The 10-row, single-pass oil cooler is optimized for the Twin-Cam engine and consequently works great on Evolution models too. The 10-row Hyper Flow design provides ensures unsurpassed flow, heat rejection and the best heat-exchange, all while hiding neatly behind the fender and beneath the voltage regulator. The oil cooler kit is supplied with a mounting bracket to allow fitment of the oil cooler at the lowest possible position, yet still above the bottom of the frame. The 10-row oil cooler's single-pass design offers significantly more cooling surface-area than its closest competitor. Special in-line turbulators add to the cooler's efficiency with minimal oil pressure loss or restriction. Aluminum construction with durable gloss-black powder coated finish. Jagg's unique thermostatically-controlled offset oil filter adapter provides an easy access point to the bike's oil supply for the installation of the oil cooler. The sandwich-style adapter is machined from

two pieces of billet aluminum and then hard-anodized to a satin black finish. The adapter installs between the bike's stock oil filter mount and the oil filter, and is designed with the same Hyper Flow Technology as all Jagg components to ensure great performance as well as great flow characteristics. All Jagg 10-row Oil Cooler Systems are supplied complete with all necessary hardware and detailed, easy-to-follow installation instructions.

Fits 1991 thru 2017 Dyna models

740218 Black
740219 Chrome

Fits 1984 thru 2008 Touring models

740215 Black
740216 Chrome

Fits 2009 thru 2016 Touring models, except 2014 and later "Mount Rushmore" models with Water Cooled cylinder heads

740217 Black



JAGG FAN ASSIST OIL COOLER

The Jagg High Performance 10-row Two-pass oil cooler kit with integrated fan is designed to perform at both the open highway and low vehicle speeds, as well as in stop-and-go traffic. The kit includes the oil cooler, cooler fan with sealed-motor, oil hose, mounting hardware, automatic thermal fan switch and wiring harness to allow simple bolt-on application. Kits for Dyna models come complete with oil filter adapter. When you want to install the Fan-Assist kit on a Touring model as a replacement for your stock oil cooler you have to order a ZPN234509 oil filter adapter nut plus a ZPN740085 oil filter adapter. Fan turns on automatically at circa 210°Fahrenheit (99°C). The fan pulls a full 150cfm (71 Liters per minute) across the cooler and the HyperFlow Technology ensures unsurpassed flow and heat rejection.

740093 Fits 1999 thru 2008 FLH and FLT series Touring models

740094 Fits 2009 thru 2016 FLH and FLT series Touring, except "Mount Rushmore" models with water cooled cylinder heads

740085 Offset oil filter adapter with thermostat

234509 Oil filter adapter nut (OEM 26352-95A)

740220 Fits 1991-2017 Dyna models



JAGG #4550 OIL FILTER ADAPTER

The #4550 is an updated version of the #4400 oil filter adapter. It is designed to work with front-mounted spin on oil filters. Provides easy access to the oil supply for fitment of an oil cooler to all Sportster and Big-Twin Evolutions, except fuel injected models. Like all Jagg oil filter adapters this adapter allows the oil to flow through the filter before the cooler, resulting in less restriction. Installation on S&S engines requires the use of a special adapter nut ZPN740091 that must be ordered separately.

740225 Oil filter adapter for Evolution Big Twin, Evolution Sportster and air cooled Buells

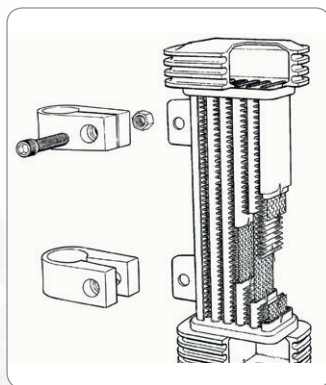
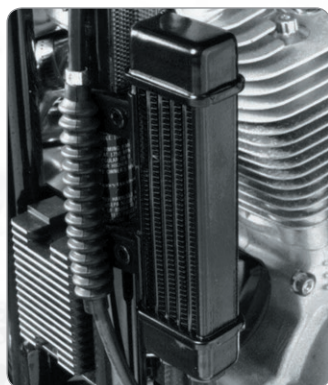
740091 Adapter nut for use on S&S engines



JAGG #4000 BYPASS VALVE

The Jagg bypass valve works in conjunction with all oil coolers as a manual version of a thermostat by allowing the rider to select, or bypass, the oil cooler as riding conditions dictate.

740076 Oil cooler bypass valve



JAGG #1200 SERIES SLIMLINE OIL COOLERS

Engineered to provide the same maximum oil cooling as the JAGG Deluxe cooler, the Slimline design allows the cooler to blend in with the bike. These units virtually disappear while providing the ultimate in performance.

Note: Installation on Twin Cam models requires use of ZPN740078 Offset Oil Filter Adapter to access oil supply for cooler installation.

Note: Installation on 2004 to present Sportster models requires use of ZPN740077 Oil Filter Adapter to access oil supply for cooler installation.

Fits 1957 to present Sportster, 1955 thru 1964 Panhead, 1965 thru 1984 Shovelhead, 1982 thru 1994 FXR, 1984 thru 2017 Softail, 1984-2016 Dresser and Road King models, and 1991 thru 2017 Dyna
740072 Black

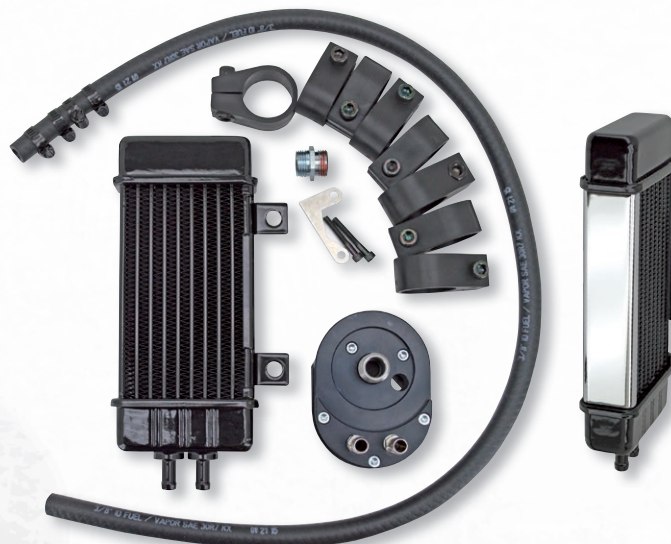
Horizontal mount, fits 1984 thru 2016 Dresser and Road King
740074 Black
740088 Chrome



JAGG LOWMOUNT OIL COOLER FOR SOFTAIL

This Jagg 6-row Low mount Oil Cooler kit is designed especially for Twin-Cam Harley-Davidson Softail Motorcycles. The cooler kit is supplied with a riser plate to lift the regulator and allow fitment of the oil cooler at the lowest possible position, yet still above the bottom of the frame. The 6-row oil cooler's two-pass design offers significantly more cooling surface-area than its closest competitor. Special in-line turbulators add to the cooler's efficiency with minimal oil pressure loss or restriction. Aluminum construction with durable powder coated finish. Jagg's unique thermostatically-controlled offset oil filter adapter provides an easy access point to the bike's oil supply for the installation of the oil cooler. The sandwich-style adapter is machined from two pieces of billet aluminum and then hard-anodized to a satin black finish. The adapter installs between the bike's stock oil filter mount and the oil filter, and is designed with the same Hyper Flow Technology as all Jagg components to ensure great performance as well as great flow characteristics. Jagg's Softail Low Mount Oil Cooler System is supplied complete with all necessary hardware and detailed, easy-to-follow mounting instructions.

740096 Fits 2000 thru 2017 Softail, except ABS equipped models



JAGG WIDELINE OIL COOLER SYSTEM

Extreme performance in a compact package, the Jagg Wide Line Series 10-row high-performing two-pass oil cooler is engineered to fit all bikes with vertical frame tubes. Specifically designed to exceed the cooling demands of the modern V-Twin motorcycle. The Wide Line Chrome oil cooler kit integrates a chrome channel along the outer edge of the cooler to complement your engine. The cooler mounts to the left frame down-tube, spaced away from the frame to allow airflow to both the oil cooler and the engine's cylinders. The cooler is mounted to the frame using unique, highly-durable, Uralite mounts, which have a shock absorbing effect and clean styling. The Wide Line's 10-tube, two-pass design offers significantly more cooling surface than its closest competitor. Special in-line turbulators add to the cooler's efficiency with minimal oil pressure loss or restriction. Aluminum construction with durable powder coated finish. Kits come with Jagg's unique thermostatically-controlled offset oil filter adapter that provides an easy access point to the bike's oil supply for the installation of the oil cooler. The sandwich-style adapter is machined from two pieces of billet aluminum and then hard-anodized to a satin black finish. The adapter installs between the bike's stock oil filter mount and the oil filter, and is designed with the same Hyper Flow Technology as all Jagg components to ensure great performance as well as great flow characteristics.

Fits 1986 to present Sportster, 1982 thru 1999 FXR. 1991 thru 2017 Dyna, 1984 thru 2017 Softail and 1984 thru 2016 Touring, except models with lower fairings and 2014 to present "Mount Rushmore" water cooled cylinder heads

740097 Complete kit with all black cooler

740098 Complete kit with black cooler with chrome shroud

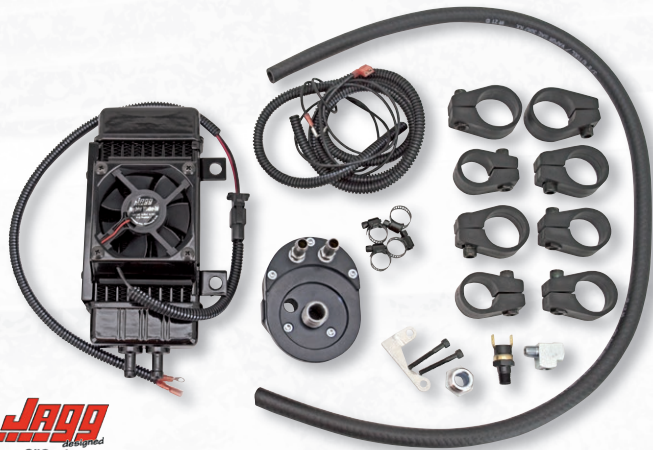


JAGG #1300 SERIES OIL COOLERS FOR BUELL

This High-Performance oil cooler is engineered to offer the maximum in cooling for Buell Motorcycles. Designed to compliment the aggressive styling of the motorcycle. Kit comes complete with the oil filter adapter (ZPN740077) and everything necessary for quick and easy installation.

740075 Fits Buell S-, M- and X-models 1996 thru 2003

01	HELMETS, LUGGAGE, AUDIO & MORE
02	SEAT
03	EXHAUST
04	ELECTRIC & LIGHT
05	ENGINE ELECTRICS
06	INTAKE
07	ENGINE
08	PRIMARY
09	TRANSMISSION
10	FINAL DRIVE
11	WHEELS & TIRE
12	BRAKE
13	FOOT CONTROL
14	HANDLEBAR
15	FRONT SUSPENSION
16	CHASSIS/FRAME & SHOCKS
17	FENDER & STRUTS
18	GAS TANK & INSTRUMENT
19	OIL TANK, FILTER & LINE
20	FASTENERS
21	MIRROR
22	WINDSHIELD
23	OIL, CHEMICALS & TOOLS
24	TECHTIPS & CROSS REF > ZPN
25	CROSS REF ZPN > PAGE
26	ALPHABETICAL INDEX



JAGG VERTICAL MOUNT FAN ASSISTED OIL COOLER KITS

Extreme performance in a compact package, the Jagg Fan-assisted Vertical Oil Cooler system is designed to perform as well at low vehicle speeds and in stop-and-go traffic as on the open highway. The 10-row high-performing two-pass Jagg oil cooler is engineered to fit all bikes with vertical frame tubes. Specifically designed to exceed the cooling demands of the modern V-Twin motorcycle. Smooth end caps and a gloss-black finish help this cooler blend in with the frame and hardware for a clean, streamlined look. The cooler mounts to the left frame down-tube, spaced away from the frame to allow airflow to both the oil cooler and the engine's cylinders. The cooler is mounted to the frame using unique, highly-durable, Uralite mounts, which have a shock absorbing effect and clean styling. The 10-tube, two-pass design offers significantly more cooling surface than its closest competitor. Special in-line turbulators add to the cooler's efficiency with minimal oil pressure loss or restriction. Aluminum construction with durable powder coated finish. The Jagg WeatherTek, a worldwide exclusive dust-tight and waterproof fan, turns on automatically at circa 100°C (210°F) and pulls a full 75cfm across the cooler. The included Jagg's unique thermostatically-controlled offset oil filter adapter provides an easy access point to the bike's oil supply for the installation of the oil cooler. The sandwich-style adapter is machined from two pieces of billet aluminum and then hard-anodized to a satin black finish. The adapter installs between the bike's stock oil filter mount and the oil filter, and is designed with the same Hyper Flow Technology as all Jagg components to ensure great performance as well as great flow characteristics. The Fan-assisted Vertical Oil Cooler System is supplied complete with all necessary hardware and detailed, easy-to-follow installation instructions.

Fits 1986 to present Sportster, 1982 thru 1999 FXR, 1991 thru 2017 Dyna, 1984 thru 2017 Softail and 1984 thru 2016 Touring, except models with lower fairings and 2014 to present "Mount Rushmore" models with water cooled cylinder heads

740221 Black



REPLACEMENT CLAMPS FOR JAGG OIL COOLERS

Replacement clamps for jagg oil coolers

740079 1" Replacement clamp with bolt

740081 1 1/8" Replacement clamp with bolt

740082 1 1/4" Replacement clamp with bolt

740083 1 3/8" Replacement clamp with bolt

740084 1 1/2" Replacement clamp with bolt



1 1/4" OIL COOLER CLAMP SET

To mount oil coolers to frame tubes. Also usable for many custom applications. Clamp is made of flexible steel strip material with rubber "anti vibration" trim (OEM 62408-87).

061180 Oil cooler clamp set



JAGG #4050 AUTOMATIC BY-PASS VALVE

The Jagg Automatic By-Pass Valve acts as an automatic thermostat allowing you to by-pass the oil cooler for cold weather riding or faster warm ups on cool days. Durable anodized billet aluminum construction and compact in-line installation. Works with all oil coolers but if the oil hoses between the oil cooler and the oil source are too short, the oil cooler by-pass valve may not fit in the oil lines. Jagg mini by-pass valves require at least 3 inches of straight hose. The Jagg Automatic By-Pass is supplied complete with all necessary hardware and easy to follow installation instructions.

740092 Jagg Automatic By-Pass valve



JAGG OIL HOSE UPGRADE KITS

Set your bike apart and give your Jagg oil cooler installation a racy look with a set of performance braided oil hoses. The length of the hoses is 12" (30.5cm) and they are available in bright stainless-steel or Black lightweight fiber. The hose kits are equipped with one pair aluminum hose separators and two pair of aluminum hose finishers in matching color. Simply trim hose to required length, slip hose finishers over ends of hose, press hose onto nipple, and tighten hose clamp, to achieve an easy and beautiful upgrade. Hose features internal steel wire reinforcement and braided outer jacket for structure, toughness and racy look. Hose finishers with integrated worm-drive hose clamps dress up hose ends and make for solid connections. Hose separators manage hose lengths, keeping hose tight and tidy.

740223 Lightweight black fiber hose upgrade kit

740224 Bright stainless-steel hose upgrade kit



JAGG OFFSET OIL FILTER ADAPTERS

The offset design allows easy oil supply access for oil cooler installation on all Twin Cam models and fuel injected Evolution models with front-mounted spin on oil filter. These billet aluminum offset oil filter adapters install between the engine and oil filter. An offset adapter is required to fit an oil cooler on Twin Cam models. For fuel injected Evolution models an offset oil filter adapter is recommended to fit an oil cooler. It improves the accessibility of the oil filter during maintenance and also directs the oil through the filter before entering the cooler, resulting in less restriction.

740085 Offset oil filter adapter with thermostat

740080 Gasket kit for offset oil filter adapters

740095 Anti Rotation device for Softail Twin Cam "B" engines