



Windshields

22-002



Windshield Bags

22-016



Windshield Accessories

22-017



Fairings

22-018

22

01
HELMETS,
LUGGAGE,
AUDIO & MORE02
SEAT03
EXHAUST04
ELECTRIC
& LIGHT05
ENGINE
ELECTRICS06
INTAKE07
ENGINE08
PRIMARY09
TRANSMISSION10
FINAL DRIVE11
WHEELS &
TIRE12
BRAKE13
FOOT
CONTROL14
HANDLEBAR15
FRONT
SUSPENSION16
CHASSIS/
FRAME
& SHOCKS17
FENDER
& STRUTS18
GAS TANK &
INSTRUMENT19
OIL TANK, FILTER
& LINE20
FASTENERS21
MIRROR22
WINDSHIELD23
OIL, CHEMICALS
& TOOLS24
TECHTIPS &
CROSS REF
> ZPN25
CROSS REF
ZPN > PAGE26
ALPHABETICAL
INDEX



VSTREAM REPLACEMENT WINDSCREENS FOR TOURING MODELS

National Cycle's innovative VStream Windscreen gets its name from the unique shape and dimensional contours designed and engineered into the windscreen. The patented "V" profile helps push the turbulent wind out and away from the side of the rider's head, producing a quieter and more comfortable riding experience for both the rider and the passenger. VStream Windscreens are designed specifically for each model bike to ensure optimum performance and perfect fit using the OEM mounting hardware. Windscreens are made from the finest windshield material in the world, 4.0mm thick Lexan polycarbonate. This material is 20 times more impact resistant than acrylic or other plastic windshields, reason why National Cycle gives a 3-year warranty against breakage. Additionally this polycarbonate features National Cycle's exclusive Quantum coating. This provides 10 times better scratch resistance than any other windshield material on the market. The Tall and Standard sizes are outstanding high-speed highway performers for FLHT/FLHX riders. Enjoy a significant improvement in wind management and riding comfort. If you want a custom look and a lower profile, you will like the performance of the VStream models in Low or Ultra Low. Height is measured from the bottom to the top on the center of the screen.



Fits all stock "BatWing" fork mounted windscreen bodies on 1996-2013 FLHT, FLHTC, FLHTK & FLHTCU Electra Glide, 2006-2013 FLHX Street Glide, 2009-2013 FLHTCUTG Tri-Glide Ultra Classic and 2010-2011 FLHXXX Street Glide Trike

- 731110** Standard, 14" (35.5cm) high, clear
- 731111** Tall, 17" (43.2cm) high, clear
- 731112** Low, 10 3/4" (27.3cm) high, light tinted
- 731113** Low, 10 3/4" (27.3cm) high, dark tinted
- 731114** Ultra Low, 7 1/4" (18.4cm) high, dark tinted



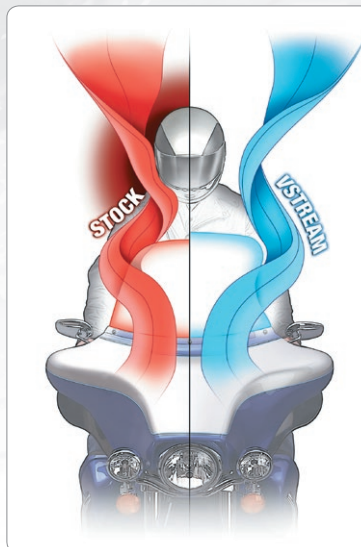
Fits all stock "BatWing" fork mounted windscreen bodies on 2014 to present FLHTCU & FLHTK Electra Glide, FLHX & FLHXS Street Glide and FLHTCUTG Tri-Glide Ultra

- 735221** Ultra Low, 7.6" (19.3cm) high, light tint
- 735222** Ultra Low, 7.6" (19.3cm) high, dark tint
- 735220** Low, 9.6" (24.4cm) high, light tint
- 735219** Standard, 11.6" (29.5cm) high, clear
- 735218** Tall, 14.6" (37cm) high, clear



Fits all stock frame mounted fairing bodies on FLTR Tour Glide 1984 thru 1996

- 731115** Standard, 21 3/4" (55.2cm) high, clear
- 731116** Tall, 18 3/4" (47.6cm) high, clear
- 731118** Low, 15 3/4" (40cm) high, dark tinted





NATIONAL CYCLE WAVE WINDSHIELDS FOR TOURING

Wave windshields are stylish, sleek, and sexy. Made from Quantum hardcoated polycarbonate gives them outstanding strength and unbeatable scratch resistance.

- Thick gauge material with a precision cut, smooth edge
- Quality is evident when you feel the smooth radiused edge and look at the shape of a Wave windshield
- Little vibration or movement makes these screens the Rider's Choice!
- 3-Year Warranty against breakage... period!

Think about riding into the sun or at night and not having to look through the glare of fine scratches! That's the Quantum Difference! Available in three different lengths for most Touring models 1996 thru 2013.



Fits all stock "BatWing" fork mounted windscreen bodies on 1996-2013 FLHT, FLHTC, FLHTK & FLHTCU Electra Glide, 2006-2013 FLHX Street Glide, 2009-2013 FLHTCUTG Tri-Glide Ultra Classic and 2010-2011 FLHXXX Street Glide Trike

- 731123** 10" (25.4cm) tall clear screen
731124 7 3/4" (19.7cm) medium light tint screen
731125 5 1/4" (13.3cm) low dark tint screen



Fits all stock frame mounted fairing bodies on 1998-2013 FLTR & FLTRU Road Glide and 2010-2013 FLTRX Road Glide Custom

- 731126** 10 1/2" (26.7cm) tall clear screen
731127 8 1/4" (21cm) medium light tint screen
731128 6 1/4" (15.9cm) low dark tint screen



Fits all stock frame mounted fairing bodies on 1998-2013 FLTR & FLTRU Road Glide and 2010-2013 FLTRX Road Glide Custom

- 731119** Standard, 15 1/4" (38.7cm) high, clear
731120 Tall, 18" (45.7cm) high, clear
731121 Low, 9 1/4" (23.5cm) high, light tinted
731122 Low, 9 1/4" (23.5cm) high, dark tinted



Fits all stock frame mounted fairing bodies on FLTR Road Glide, FLTRU Road Glide Ultra and FLTRX Road Glide Custom 2015 to present

- 735223** Standard, 16" (40.6cm) high, clear
735224 Low, 12 1/2" (31.8cm) high, light tinted
735225 Super Low, 9" (22.9cm) high, dark tinted

NEW



NATIONAL CYCLE WINDSCREENS FOR TOURING

Stylish bolt-on stock replacement screens for the stock Batwing fairing. Screens are 4" (10cm) high. Fits all 2014 to present Electra Glide and Street Glide models.

735329 Fly Boy style

735330 Bad Boy style

735331 GeeBee style



NATIONAL CYCLE'S SPARTAN DETACHABLE WINDSHIELD

Spartan screens provide good wind-and-weather protection for the rider and are great for short and long trips. The Spartan windscreen is fitted to your bike with smooth looking chrome plated and stainless steel hardware onto the stealth black powdercoat stainless steel windscreen frame. Just bolt the hardware to your front end as indicated on the included installation instructions, and then hook the screen onto the brackets. These windshields are made from the finest windshield material in the world, 4.0mm thick Lexan polycarbonate. This material is 20 times more impact resistant than acrylic or other plastic windshields. Additionally this polycarbonate features National Cycle's exclusive Quantum coating. This provides 10 times better scratch resistance than any other windshield material on the market. Edges of the screen are radiused for safety and enhanced appearance. We have indicated the Height of these screens measured from the top of the headlamp cut out to the top of the screen. For your convenience we list part numbers for complete windshields with mounting hardware kit, as well as individual screens and mounting kits. Spartan windshields come in 17" (43cm) and 19" (48cm) high and are 18" (46cm) wide.

Fits Sportster models:

1988-2010 XL883 & 1200, 1996-up XL883 & 1200 Custom, 2005-2015 XL883 & 1200 Low, 2007-2012 XL1200N Nightster, 2009-up XL883N Iron, 2002-2013 XL883 & 1200R Roadster, 1996-2003 XL1200S Sport, 2012-2016 XL1200V Seventy-Two.

Fits Dyna models:

1991-2005 FXD, FXDC Super Glide Custom, FXDL Low Rider, FXDX Super Glide Sport

Fits FXR models:

1982-1994 FXR, FXRS Low Rider & FXLR Low Rider

730971 Complete windscreen with mounting bracket kit, 17" (43cm) high

730968 Complete windscreen with mounting bracket kit, 19" (48cm) high

731146 Windscreen only, clear, 17" (43cm) high

731143 Windscreen only, clear, 19" (48cm) high

731101 Mounting bracket kit only

Fits Softail models:

1984-1990 & 1999-2012 FXST, 1999-2009 FXSTB Night Train, 2011-2013

FXS Blackline

Fits Wide Glide models:

1980-1985 FXWG Wide Glide, 1983 FXDG Disc Glide, 1993 thru 2005 FXDWG Dyna Wide Glide

730973 Complete windscreen with mounting bracket kit, 17" (43cm) high

730970 Complete windscreen with mounting bracket kit, 19" (48cm) high

731142 Windscreen only, clear, 19" (48cm) high

731145 Windscreen only, clear, 17" (43cm) high

731102 Mounting bracket kit only



Fits Softail models without H-D Spotlight bar:

1986-1990 Heritage, 1987-2017 Heritage Classic, 2012-2017 FLS & FLSS Slim, 1993-1996 FLSTN Nostalgia, 1990-2017 FLSTF, FLSTFB & FLSTFBS FatBoy, 2005-2017 FLSTN DeLuxe

730974 Complete windscreen with mounting bracket kit, 17" (43cm) high

730975 Complete windscreen with mounting bracket kit, 19" (48cm) high

731144 Windscreen only, clear, 17" (43cm) high

731141 Windscreen only, clear, 19" (48cm) high

731104 Mounting bracket kit only

Fits Softail models with H-D Spotlightbar:

1986-1990 FLST Heritage, 1987-2017 FLSTC Heritage Classic, 1993-1996 FLSTN Nostalgia, 1990-2017 FLSTF, FLSTFB & FLSTFBS FatBoy, 2005-2017 FLSTN DeLuxe

730986 Complete windscreen with mounting bracket kit, 17" (43cm) high

730987 Complete windscreen with mounting bracket kit, 19" (48cm) high

731144 Windscreen only, clear, 17" (43cm) high

731105 Mounting bracket kit only

731141 Windscreen only, clear, 19" (48cm) high

Fits Dyna models:

2006-2017 FXD Super Glide, FXDB Street Bob, FXDC Super Glide Custom, FXDL Low Rider, FXDWG Wide Glide

Fits Softail models:

2008-2011 FXCW & FXCWC Rocker

730972 Complete windscreen with mounting bracket kit, 17" (43cm) high

730969 Complete windscreen with mounting bracket kit, 19" (48cm) high

731145 Windscreen only, clear, 17" (43cm) high

731142 Windscreen only, clear, 19" (48cm) high

731103 Mounting bracket kit only



NATIONAL CYCLE FLY-SCREEN LS

A small, only 9" (23cm) tall and 9 3/4" (25cm) wide windscreen to retain the custom built look. The unique fork mount hardware with countersunk screws creates a very clean, billet appearance. Easy to fit and available in light tint or dark tint with highly polished Chrome frame.

Fits Sportsters, Big Twins, Wide Glide FX models, Victory Octane and Indian Scout with 39 or 41mm forks

710662 Light tinted

710663 Dark tinted

Fits 2006 thru 2017 Dyna (except FXDF) and 2002 thru 2017 V-Rod with 49mm forks, also fits many aftermarket UPSD forks up to 56mm diameter.

731168 Light tinted

731169 Dark tinted

01
HELMETS,
LUGGAGE,
AUDIO & MORE

02
SEAT

03
EXHAUST

04
ELECTRIC
& LIGHT

05
ENGINE
ELECTRICS

06
INTAKE

07
ENGINE

08
PRIMARY

09
TRANSMISSION

10
FINAL DRIVE

11
WHEELS &
TIRE

12
BRAKE

13
FOOT
CONTROL

14
HANDLEBAR

15
FRONT
SUSPENSION

16
CHASSIS/
FRAME
& SHOCKS

17
FENDER
& STRUTS

18
GAS TANK &
INSTRUMENT

19
OIL TANK, FILTER
& LINE

20
FASTENERS

21
MIRROR

22
WINDSHIELD

23
OIL, CHEMICALS
& TOOLS

24
TECHTIPS &
CROSS REF
> ZPN

25
CROSS REF
ZPN > PAGE

26
ALPHABETICAL
INDEX



NATIONAL CYCLE QUICK-RELEASE WINDSHIELDS

Four styles of windshields that use the same Quick-Release fork mounted hardware allow you to remove or change windshield within seconds. The 2-Up is the largest, Chopped is just a little shorter. The Shorty is quite small and Deflector is just big enough to keep the wind from your chest. The 2-Up, Chopped and Shorty can be equipped with a set of chrome lowers for added protection from the elements. All windshields are made of Quantum hard coated unbreakable Lexan polycarbonate. Quick Release mounting brackets are chrome and stainless and hard to notice when fitted on your motorcycle.

Height measured from the headlight cut out to the top of the windscreen:

2-Up	47-49.5 cm, width 58.4 cm
Chopped	34.5-38 cm, width 56 cm
Shorty	29-33 cm, width 47 cm
Deflector	30.5 cm, width 34 cm

Chrome lower wind deflectors

735254 Fits all FL Softail models except FLSTN

735253 Fits all models except FL Softail, FXSTB and Road King



Sportster, complete kits with screen and mounting kit	2-Up	Chopped	Chopped	Shorty	Shorty	Deflector	Deflector
	Clear	Clear	Tinted	Clear	Tinted	Clear	Tinted
XL883 & 1200 1988-2010	730962	735300	735301	735302	735303	735304	735305
XL883 & 1200 Custom 1996-up	730962	735300	735301	735302	735303	735304	735305
XL883 & 1200 Low 2005-2015	730962	735300	735301	735302	735303	735304	735305
XL1200N Nightster 2007-2012	730962	735300	735301	735302	735303	735304	735305
XL883N Iron 2009-up	730962	735300	735301	735302	735303	735304	735305
XL883 & 1200R Roadster 2002-2013	730962	735300	735301	735302	735303	735304	735305
XL1200S Sport 1996-2003	730962	735300	735301	735302	735303	735304	735305
XL1200V Seventy-Two 2012-2016	730962	735300	735301	735302	735303	735304	735305
FXR, complete kits with screen and mounting kit	2-Up	Chopped	Chopped	Shorty	Shorty	Deflector	Deflector
	Clear	Clear	Tinted	Clear	Tinted	Clear	Tinted
FXLR Low Rider 1982-1994	730962	735300	735301	735302	735303	735304	735305
FXR 1982-1994	730962	735300	735301	735302	735303	735304	735305
FXRS Low Rider 1982-1994	730962	735300	735301	735302	735303	735304	735305
Dyna, complete kits with screen and mounting kit	2-Up	Chopped	Chopped	Shorty	Shorty	Deflector	Deflector
	Clear	Clear	Tinted	Clear	Tinted	Clear	Tinted
FXD 35th Anniversary Super Glide 2006	730961	735306	735307	735308	735309	-	-
FXD Super Glide 1991-2005	730962	735300	735301	735302	735303	735304	735305
FXD Super Glide 2006-2010	730961	735306	735307	735308	735309	-	-
FXDB Street Bob 2006-2015	730961	735306	735307	735308	735309	-	-
FXDC Super Glide Custom 1991-2002	730962	735300	735301	735302	735303	735304	735305
FXDC Super Glide Custom 2006-2014	730961	735306	735307	735308	735309	-	-
FXDL Low Rider 1991-2005	730962	735300	735301	735302	735303	735304	735305
FXDL & FXDLS Low Rider 2006-2017	730961	735306	735307	735308	735309	-	-
FXDX Super Glide Sport 1991-2005	730962	735300	735301	735302	735303	735304	735305
Wide Glides, complete kits with screen and mounting kit	2-Up	Chopped	Chopped	Shorty	Shorty	Deflector	Deflector
	Clear	Clear	Tinted	Clear	Tinted	Clear	Tinted
FXWG Wide Glide 1980-1985	730964	735310	735311	-	735312	735313	735314
FXDG Disc Glide 1983	730964	735310	735311	-	735312	735313	735314
FXDWG Dyna Wide Glide 1993-2005	730964	735310	735311	-	735312	735313	735314
FXDWG Dyna Wide Glide 2006-2017	730963	735325	735326	735327	735328	-	-
Softail, complete kits with screen and mounting kit	2-Up	Chopped	Chopped	Shorty	Shorty	Deflector	Deflector
	Clear	Clear	Tinted	Clear	Tinted	Clear	Tinted
FLS & FLSS Slim 2012-2017 without light bar	730965	735315	735316	-	-	735317	735318
FLST Heritage 1986-1990 & 2006 with light bar	730966	735319	735320	-	-	735321	735322
FLST Heritage 1986-1990 & 2006 without light bar	730965	735315	735316	-	-	735317	735318
FLSTC Heritage Classic 1987-2016 with light bar	730966	735319	735320	-	-	735321	735322
FLSTC Heritage Classic 1987-2016 without light bar	730965	735315	735316	-	-	735317	735318
FLSTF, FLSTFB & FLSTFBS FatBoy 1990-2017 with light bar	730966	735319	735320	-	-	735321	735322
FLSTF, FLSTFB & FLSTFBS FatBoy 1990-2017 without light bar	730965	735315	735316	-	-	735317	735318
FLSTN Heritage Special 1994-1996 with light bar	730966	735319	735320	-	-	735321	735322
FLSTN Heritage Special 1994-1996 without light bar	730965	735315	735316	-	-	735317	735318
FLSTN Nostalgia 1993 with light bar	730966	735319	735320	-	-	735321	735322
FLSTN Nostalgia 1993 without light bar	730965	735315	735316	-	-	735317	735318
FLSTN DeLuxe 2005-2017 without light bar	730965	735315	735316	-	-	735317	735318
FXBB Street Bob 2018 to present	730961	735306	735307	735308	735309	-	-
FXCW & FXCWC Rocker 2008-2011	730961	735306	735307	735308	735309	-	-
FXLR Low Rider 2018 to present	730961	735306	735307	735308	735309	-	-
FXST 1984-2012	730964	735310	735311	-	735312	735313	735314
FXSTB Night Train 1999-2009	730964	735310	735311	-	735312	735313	735314
FXSTC Heritage Classic 1987-2010	730964	735310	735311	-	735312	735313	735314
FXSTD Deuce 2000-2007	730964	735310	735311	-	735312	735313	735314
Touring, complete kits with screen and mounting kit	2-Up	Chopped	Chopped	Shorty	Shorty	Deflector	Deflector
	Clear	Clear	Tinted	Clear	Tinted	Clear	Tinted
FLHR, FLHRC & FLHRCS Road King 1994-up	730967	735323	735324	-	-	-	-



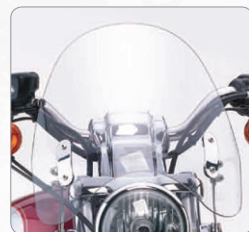
**2-Up
Clear**



**Chopped
Clear**



**Shorty
Tinted**



**Deflector
Clear**

01
HELMETS,
LUGGAGE,
AUDIO & MORE

02
SEAT

03
EXHAUST

04
ELECTRIC
& LIGHT

05
ENGINE
ELECTRICS

06
INTAKE

07
ENGINE

08
PRIMARY

09
TRANSMISSION

10
FINAL DRIVE

11
WHEELS &
TIRE

12
BRAKE

13
FOOT
CONTROL

14
HANDLEBAR

15
FRONT
SUSPENSION

16
CHASSIS/
FRAME
& SHOCKS

17
FENDER
& STRUTS

18
GAS TANK &
INSTRUMENT

19
OIL TANK, FILTER
& LINE

20
FASTENERS

21
MIRROR

22
WINDSHIELD

23
OIL, CHEMICALS
& TOOLS

24
TECHTIPS &
CROSS REF
> ZPN

25
CROSS REF
ZPN > PAGE

26
ALPHABETICAL
INDEX

CONTINUED ON NEXT PAGE »

Sportster, individual screens and mounting kits	2-Up Clear	Chopped Clear	Chopped Tinted	Shorty Clear	Shorty Tinted	Deflector Clear	Deflector Tinted
XL883 & 1200 1988-2010	731095	735228	735229	735230	735231	735232	735233
XL883 & 1200 Custom 1996-up	731095	735228	735229	735230	735231	735232	735233
XL883 & 1200 Low 2005-2015	731095	735228	735229	735230	735231	735232	735233
XL1200N Nightster 2007-2012	731095	735228	735229	735230	735231	735232	735233
XL883N Iron 2009-up	731095	735228	735229	735230	735231	735232	735233
XL883 & 1200R Roadster 2002-2013	731095	735228	735229	735230	735231	735232	735233
XL1200S Sport 1996-2003	731095	735228	735229	735230	735231	735232	735233
XL1200V Seventy-Two 2012-2016	731095	735228	735229	735230	735231	735232	735233
FXR, individual screens and mounting kits	2-Up Clear	Chopped Clear	Chopped Tinted	Shorty Clear	Shorty Tinted	Deflector Clear	Deflector Tinted
FXLR Low Rider 1982-1994	731095	735228	735229	735230	735231	735232	735233
FXR 1982-1994	731095	735228	735229	735230	735231	735232	735233
FXRS Low Rider 1982-1994	731095	735228	735229	735230	735231	735232	735233
Dyna, individual screens and mounting kits	2-Up Clear	Chopped Clear	Chopped Tinted	Shorty Clear	Shorty Tinted	Deflector Clear	Deflector Tinted
FXD 35th Anniversary Super Glide 2006	731099	735234	735235	735236	735237	-	-
FXD Super Glide 1991-2005	731095	735228	735229	735230	735231	735232	735233
FXD Super Glide 2006-2010	731099	735234	735235	735236	735237	-	-
FXDB Street Bob 2006-2015	731099	735234	735235	735236	735237	-	-
FXDC Super Glide Custom 1991-2002	731095	735228	735229	735230	735231	735232	735233
FXDC Super Glide Custom 2006-2014	731099	735234	735235	735236	735237	-	-
FXDL Low Rider 1991-2005	731095	735228	735229	735230	735231	735232	735233
FXDL & FXDLS Low Rider 2006-2017	731099	735234	735235	735236	735237	-	-
FXDX Super Glide Sport 1991-2005	731095	735228	735229	735230	735231	735232	735233
Wide Glides, individual screens and mounting kits	2-Up Clear	Chopped Clear	Chopped Tinted	Shorty Clear	Shorty Tinted	Deflector Clear	Deflector Tinted
FXWG Wide Glide 1980-1985	731096	735238	735239	-	735240	735241	735242
FXDG Disc Glide 1983	731096	735238	735239	-	735240	735241	735242
FXDWG Dyna Wide Glide 1993-2005	731096	735238	735239	-	735240	735241	735242
FXDWG Dyna Wide Glide 2006-2017	731100	735243	735244	735245	735246	-	-
Softail, individual screens and mounting kits	2-Up Clear	Chopped Clear	Chopped Tinted	Shorty Clear	Shorty Tinted	Deflector Clear	Deflector Tinted
FLS & FLSS Slim 2012-2017 without light bar	731097	735247	735248	-	-	735249	735250
FLST Heritage 1986-1990 & 2006 with light bar	731097	735247	735248	-	-	735249	735250
FLST Heritage 1986-1990 & 2006 without light bar	731097	735247	735248	-	-	735249	735250
FLSTC Heritage Classic 1987-2016 with light bar	731097	735247	735248	-	-	735249	735250
FLSTC Heritage Classic 1987-2016 without light bar	731097	735247	735248	-	-	735249	735250
FLSTF, FLSTFB & FLSTFBS FatBoy 1990-2017 with light bar	731097	735247	735248	-	-	735249	735250
FLSTF, FLSTFB & FLSTFBS FatBoy 1990-2017 without light bar	731097	735247	735248	-	-	735249	735250
FLSTN Heritage Special 1994-1996 with light bar	731097	735247	735248	-	-	735249	735250
FLSTN Heritage Special 1994-1996 without light bar	731097	735247	735248	-	-	735249	735250
FLSTN Nostalgia 1993 with light bar	731097	735247	735248	-	-	735249	735250
FLSTN Nostalgia 1993 without light bar	731097	735247	735248	-	-	735249	735250
FLSTN DeLuxe 2005-2017 without light bar	731097	735247	735248	-	-	735249	735250
FXCW & FXCWC Rocker 2008-2011	731099	735234	735235	735236	735237	-	-
FXST 1984-2012	731096	735238	735239	-	735240	735241	735242
FXSTB Night Train 1999-2009	731096	735238	735239	-	735240	735241	735242
FXSTC Heritage Classic 1987-2010	731096	735238	735239	-	735240	735241	735242
FXSTD Deuce 2000-2007	731096	735238	735239	-	735240	735241	735242
Touring, individual screens and mounting kits	2-Up Clear	Chopped Clear	Chopped Tinted	Shorty Clear	Shorty Tinted	Deflector Clear	Deflector Tinted
FLHR, FLHRC & FLHRCS Road King 1994-up	731098	735251	735252	-	-	-	-



**2-Up
Clear**



**Chopped
Clear**



**Shorty
Tinted**



**Deflector
Clear**



731109

**NATIONAL CYCLE'S BEADED HEAVY DUTY WINDSHIELD**

The Beaded Heavy Duty is an authentic three-piece beaded construction. This timeless classic is available with a clear top and your choice of clear, blue or black lower section and adjusting window. The classic beaded edge is applied in a modern way without glue to reduce yellowing and remain good looking for many years. The Beaded Heavy Duty uses FMR hardcoated Lexan polycarbonate and is 21 1/4" (54cm) high and 22 1/2" (57cm) wide. Windshields feature highly polished chrome steel outer hardware with non-glare black epoxy coated steel inner straps. Complete windshield kits come with the required mounting hardware. When you also want to create some convenient up-front storage we have a Holdster windshield bag available as an accessory.

Fits 1993 thru 2005 FXDWG, 1980 thru 1985 FXWG, 1983 FXDG and all FXST Softail models (except Springer) 1984 thru 2017

730902 Complete windshield kit, clear

730903 Complete windshield kit, clear with blue lowers

730904 Complete windshield kit, clear with black lowers

710680 Mounting bracket kit only

Fits 1988-2009 FXSTS, FXSTSB & FXSTSE Springer models

731109 Complete windshield kit, clear

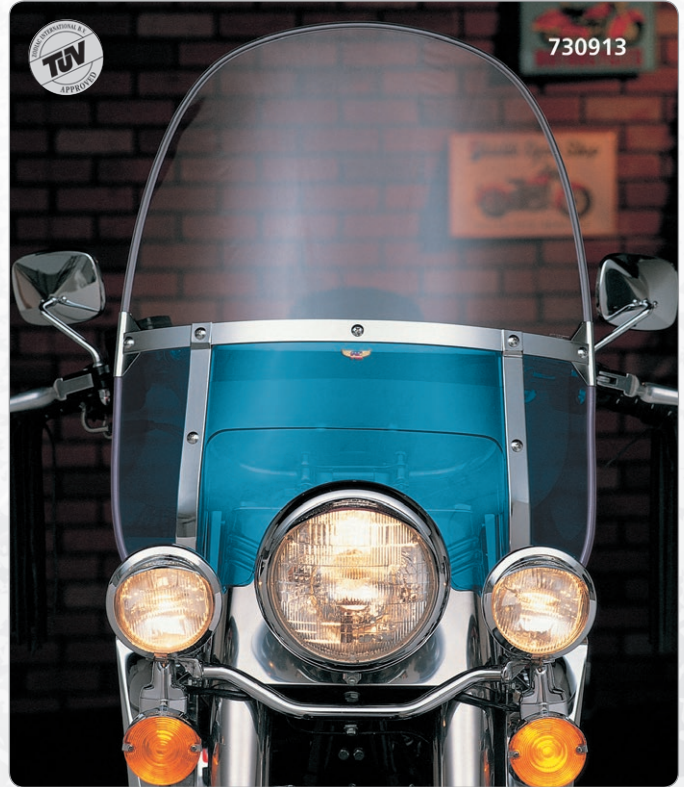
Fits FLST Heritage Softail 1986-1990 & 2006, FLSTC Heritage Softail Classic 1987-2017, FLSTN Nostalgia & Special 1993-1996, FLSTF & FLSTFB Fat Boy 1990-2017 without stock or aftermarket (spot) light bar fitted. Note: FLST, FLSTC and FLSTN models that have the (spot)light bar can be equipped with the windscreen ZPN710675, 710677 or 710678 on the stock mounts

730922 Complete windshield kit, clear

730923 Complete windshield kit, clear with blue lowers

730924 Complete windshield kit, clear with black lowers

710679 Mounting bracket kit only



730913

Fits 1949 thru 1959 FL

730912 Complete windshield kit, clear

730913 Complete windshield kit, clear with blue lowers

730914 Complete windshield kit, clear with black lowers

710681 Mounting bracket kit only

**Replacement windshields & windows**

710675 Windshield, all clear

710677 Windshield, clear with blue lowers

710678 Windshield, clear with black lowers

710669 Top clear windshield only

710683 Lower clear windshield only

710670 Clear adjusting window

710686 Lower black window only

Accessories

710696 Triple Holdster storage bag

01	HELMETS, LUGGAGE, AUDIO & MORE
02	SEAT
03	EXHAUST
04	ELECTRIC & LIGHT
05	ENGINE ELECTRICS
06	INTAKE
07	ENGINE
08	PRIMARY
09	TRANSMISSION
10	FINAL DRIVE
11	WHEELS & TIRE
12	BRAKE
13	FOOT CONTROL
14	HANDLEBAR
15	FRONT SUSPENSION
16	CHASSIS/FRAME & SHOCKS
17	FENDER & STRUTS
18	GAS TANK & INSTRUMENT
19	OIL TANK, FILTER & LINE
20	FASTENERS
21	MIRROR
22	WINDSHIELD
23	OIL, CHEMICALS & TOOLS
24	TECHTIPS & CROSS REF > ZPN
25	CROSS REF ZPN > PAGE
26	ALPHABETICAL INDEX



NATIONAL CYCLE'S TOURING HEAVY DUTY WINDSHIELDS

A large and very popular windshield is the Heavy Duty, a shield offers excellent wind protection. The shield is made out of 4mm thick Quantum coated Lexan Polycarbonate, the highest quality motorcycle windscreen material available. It is vastly superior to any other hard-coat application and is virtually indestructible, reason why it is covered by National Cycle's 3-year Unbreakable Warranty! The Touring Heavy Duty screen is DOT & ABE approved, is 20" to 21 1/2" (50.8 cm to 54.6cm) high and 21 1/2" (54.6cm) wide. The lower section with the cut-out for your headlight is called the adjusting window. To adjust your Touring Heavy Duty windshield to your personal wishes these are available separately in various colors. To create storage space you may consider to fit the Triple Holdster windshield bag. For the finishing touch of your Touring Heavy Duty windshield we have a chrome plated billet aluminum trim kit available.



Complete Touring Heavy Duty windshield kits including mounting kits
Note: FLST, FLSTC, FLSTF and FLSTN models that have the (spot)light bar can be equipped with the windscreens ZPN710711 on the stock mounts
730900 Fits 1993-2005 FXDWG, 1980-1985 FXWG, 1983 FXDG and all FXST Softails (except Springer) 1984-2017

730920 Fits FLST Heritage Softail 1986-1990 and 2006, FLSTC Heritage Softail Classic 1987-2017, FLSTN Nostalgia & Special 1993-1996, FLSTF & FLSTFB Fat Boy 1990-2017 without stock or aftermarket (spot) light bar fitted

730910 Fits 1949-1959 FL

730915 Fits 1960-1984 FL

730915 Fits 1977-1993 FLHS when installed in combination with stock windshield frame brackets

Optional and replacement adjusting windows

710690 Clear adjusting window

710691 Light grey tinted adjusting window

710694 Black adjusting window

Individual mounting kits

710679 Fits FLST Heritage Softail 1986-1990 and 2006, FLSTC Heritage Softail Classic 1987-2017, FLSTN Nostalgia & Special 1993-1996, FLSTF & FLSTFB Fat Boy 1990-2017 without stock or aftermarket (spot) light bar fitted

710680 Fits 1993-2005 FXDWG, 1980-1985 FXWG, 1983 FXDG and all FXST Softail (except Springer) 1984-2017

710681 Fits 1949-1984 FL and 1977-1993 FLHS when installed in combination with stock windshield frame brackets

Windshield only

710711 For all above mentioned windshield kits, except on 1977-1993 FLHS

710718 For windshield kits for 1977-1993 FLHS



Accessories

710698 Billet aluminum trim kit

Accessories

710696 Triple Holdster storage bag



NATIONAL CYCLE CHOPPED HEAVY-DUTY WINDSHIELD

The Chopped Heavy Duty has a wide screen and low profile to make it the preferred choice of many riders. This windshield provides excellent protection for the chest and shoulders. Shields feature National Cycle's state-of-the-art Quantum coating on Lexan polycarbonate material. Windshield frames feature highly polished chrome steel outer hardware with non-glare black epoxy coated steel inner straps. Windshield is 21.5" (54.6cm) wide and adjustable in height from 14.3" thru 15.8" (36 thru 40cm), measured from the top of the headlight cut-out to the top of the screen. The center lower window with the headlight cut-out is also adjustable, so after adjusting your screen to match your length and riding style, you simply adjust that section to get the looks you like. Complete windshield kits come complete with the required mounting hardware. For those who want to add their personal touch we also have adjusting windows available in various colors. When you want to create some convenient up-front storage we have a Holdster windshield bag available as an accessory.

Fits FLST Heritage Softail 1986 thru 1990 and 2006, FLSTC Heritage Softail Classic 1987 thru 2017, FLSTN Nostalgia & Special 1993 thru 1996, FLSTF & FLSTFB Fat Boy 1990 thru 2017 without stock or aftermarket (spot) light bar fitted. FLST, FLSTC and FLSTN models that have the (spot) light bar can be equipped with the windshield ZPN710687 on the stock mounts

- 730921** Complete windshield kit including mounting brackets
- 710679** Mounting bracket kit only
- 710687** Windshield without mounting brackets
- 710690** Clear adjusting window
- 710691** Light grey tinted adjusting window
- 710694** Black adjusting window



Fits 1993 thru 2005 FXDWG, 1980 thru 1985 FXWG, 1983 FXDG and all FXST Softail models (except Springer) 1984 thru 2017

- 730901** Complete windshield kit including mounting brackets
- 710687** Windshield without mounting brackets
- 710690** Clear adjusting window
- 710691** Light grey tinted adjusting window
- 710694** Black adjusting window

Fits 1949 thru 1959 FL

- 730911** Complete windshield kit including mounting brackets
- 710687** Windshield without mounting brackets
- 710690** Clear adjusting window
- 710691** Light grey tinted adjusting window
- 710694** Black adjusting window



Fits 1960 thru 1984 FL Duo Glide & Electra Glide

- 730916** Complete windshield kit including mounting brackets
- 710681** Mounting bracket kit only
- 710695** Windshield without mounting brackets
- 710670** Clear adjusting window

Fits 1977 thru 1993 FLHS Electra Glide Sport, requires OEM or OEM equivalent windshield frame brackets

- 730917** Complete windshield kit including mounting brackets
- 710681** Mounting bracket kit only
- 710701** Windshield without mounting brackets
- 710700** Clear adjusting window
- 710702** Light grey tinted adjusting window
- 710704** Blue adjusting window
- 710705** Black adjusting window



Accessories

- 710696** Triple Holdster storage bag



national cycle

NATIONAL CYCLE DEFLECTOR SCREEN

This 15 1/4" (39cm) tall National Cycle windscreen is made from DOT approved acrylic. Comes with National Cycle's patented and innovative Rake-Adjust hardware which permits 100 degrees of screen adjustment without moving the mounting hardware. A double Ball-socket attaches the screen to the mounting hardware, providing simple assembly and a safety release. Available as fixed mount that fits both 7/8" and 1" handlebars, as well as with Quick Release mounts for 1 1/4" (32mm) handlebars.

- 710658** Fixed mount clear Deflector screen
- 710659** Fixed mount tinted Deflector screen
- 735226** Quick Release clear Deflector screen
- 735227** Quick Release tinted Deflector screen

01	HELMETS, LUGGAGE, AUDIO & MORE
02	SEAT
03	EXHAUST
04	ELECTRIC & LIGHT
05	ENGINE ELECTRICS
06	INTAKE
07	ENGINE
08	PRIMARY
09	TRANSMISSION
10	FINAL DRIVE
11	WHEELS & TIRE
12	BRAKE
13	FOOT CONTROL
14	HANDLEBAR
15	FRONT SUSPENSION
16	CHASSIS/FRAME & SHOCKS
17	FENDER & STRUTS
18	GAS TANK & INSTRUMENT
19	OIL TANK, FILTER & LINE
20	FASTENERS
21	MIRROR
22	WINDSHIELD
23	OIL, CHEMICALS & TOOLS
24	TECHTIPS & CROSS REF > ZPN
25	CROSS REF ZPN > PAGE
26	ALPHABETICAL INDEX



730930

**national
cycle**

NATIONAL CYCLE'S NARROW FRAME HEAVY DUTY WINDSHIELDS

Narrow Frame Heavy Duty windshields feature the same quality construction as the Wide Frame Heavy Duty but are designed with a vertical strap spacing of 10.75" for a great fit on Wide Glides and a must on Narrow Glides. The lower section with the cut-out for your headlight is adjustable to allow you to fit your windscreen in a position to give you the ultimate weather protection in combination with a good looks.

The **Custom Heavy Duty** is one of our most popular windshields and offers plenty of height with a slim profile for riders of FX Narrow Glides and Sportster models who want to tour longer distances. Measures 19" thru 21" (48.2 thru 53.3cm) from the top of the headlight cut out to the top of the screen and is 19" (48.3cm) wide.

The **Low Boy Heavy Duty** is the cut down version of the Custom. It is the perfect choice for riders sitting low in the saddle or for the rider that likes a low screen. Measures 14.3" thru 16" (36.2 thru 40.6cm) from the top of the headlight cut out to the top of the screen and is 19" (48.3cm) wide.

The **Ranger Heavy Duty** cuts the slim profile to its limits for the rider who wants just a small shield. The Ranger looks great on Wide Glides and Narrow Glides as well, and provides protection against wind and rain on the rider's chest. Measures 13.8" thru 16.3" (34.9 thru 41.3cm) from the top of the headlight cut out to the top of the screen and is 16.5" (42cm) wide.

All shields are made out of 4mm thick Quantum coated Lexan Polycarbonate, the highest quality motorcycle windscreen material available. It is vastly superior to any other hardcoat application and is virtually indestructible, reason why it is covered by National Cycle's 3-year Unbreakable Warranty! To create storage space you may consider to fit the Holdster windshield bag. For the finishing touch of your Heavy Duty windshield we have a chrome plated billet aluminum trim kit available.

Complete Custom Heavy Duty windshield kits including mounting kits

730950 Fits all 1971 thru 1986 Sportster, 1970 thru 1985 FX, FXE and FXEF, all 1977 thru 1985 FXS and FXSB, and 1982 thru 1986 FXR with 35mm front forks

730930 Fits all 1987 to present XL Sportster (except 2008 to present XL883L & XL1200C/X), all 1993 thru 2005 Dyna (except FXDWG), all 1987 thru 1994 FXLR, and all 1982 thru 1994 FXR and FXRS with 39mm forks

730940 Fits all 1984 thru 2017 FXST Softail (except Springer) 1993 thru 2005 FXDWG, 1980 thru 1985 FXWG and 1983 FXDG with 41mm forks



730931

Complete Low Boy Heavy Duty windshield kits including mounting kits

730951 Fits all 1971 thru 1986 Sportster, 1970 thru 1985 FX, FXE and FXEF, all 1977 thru 1985 FXS and FXSB, and 1982 thru 1986 FXR with 35mm front forks

730931 Fits all 1987 to present XL Sportster (except 2008 to present XL883L & XL1200C/X), all 1993 thru 2005 Dyna (except FXDWG), all 1987 thru 1994 FXLR, and all 1982 thru 1994 FXR and FXRS with 39mm forks

730941 Fits all 1984 thru 2017 FXST Softail (except Springer) 1993 thru 2005 FXDWG, 1980 thru 1985 FXWG and 1983 FXDG with 41mm forks



730932

Complete Ranger Heavy Duty windshield kits including mounting kits

730952 Fits all 1971 thru 1986 Sportster, 1970 thru 1985 FX, FXE and FXEF, all 1977 thru 1985 FXS and FXSB, and 1982 thru 1986 FXR with 35mm front forks

730932 Fits 1987 to present XL Sportster (except 2008 to present XL883L & XL1200C/X), all 1993 thru 2005 Dyna (except FXDWG), all 1987 thru 1994 FXLR, and all 1982 thru 1994 FXR and FXRS with 39mm forks

730942 Fits all 1984 thru 2017 FXST Softail models (except Springer) 1993 thru 2005 FXDWG, 1980 thru 1985 FXWG and 1983 FXDG with 41mm forks

Individual Windshields

710706 Custom Heavy Duty

731107 Low Boy Heavy Duty

731108 Ranger Heavy Duty



Individual Mounting bracket kits

710707 Fits all 1971 thru 1986 Sportster, 1970 thru 1985 FX, FXE and FXEF, all 1977 thru 1985 FXS and FXSB, and 1982 thru 1986 FXR models with 35mm front forks

710708 Fits 1987 to present XL Sportster (except 2011 to present XL883L and XL1200C), all 1993 thru 2005 Dyna (except FXDWG), all 1987 thru 1994 FXLR, and all 1982 thru 1994 FXR and FXRS with 39mm forks

710709 Fits all 1984 thru 2017 FXST Softail (except Springer) 1993 thru 2005 FXDWG, 1980 thru 1985 FXWG and 1983 FXDG with 41mm forks

Accessories

710699 Billet aluminum trim kit for Custom Heavy Duty and Low Boy Heavy Duty screens

710697 Single Holdster storage bag for Custom Heavy Duty, Low Boy Heavy Duty and Ranger Heavy Duty windshields



WAVE-QR QUICK-RELEASE WINDSHIELDS

Made in the USA by National Cycle from unbreakable and highly scratch resistant Quantum-coated polycarbonate, Wave-QR windshields are a great recipe to any amount of venom the mean streets and raw winds can throw your way. Just add one part of Wave-QR to one part of motorcycle and there you go. Flowing lines, edge and attitude that fit your front end like a glove. And most important, after you have installed National Cycle's hardware kit it just takes you 5 seconds to take the Wave-QR from your bike and transform it to bare naked again. The Quick-Release hardware is so small that it is hardly noticeable when the Wave-QR windshield has been taken off. Screens are rake adjustable to match your length and riding style. All Wave-QR windshields are dark or light tint scratch resistant FMR hardcoated polycarbonate and are covered by National Cycle's 3-year warranty against breakage. Available as complete kit with windshield and mounting bracket kit, as well as individual.

Note 1: Height is measured from the headlight cutout in a vertical line level to the top of the screen in the fully raked forward position. Width is measured in a straight line across the back of the shield at its widest point.

Note 2: These fairings were formerly known as "Stinger". This is a running changeover as current inventory is replaced.

Sportster models: 1988-2010 XL883 & 1200, 1996-2010 XL883 & 1200C Custom, 2004-2013 Roadster, 2005-2010 XL883L Low, 2006-2011 XL1200L Low, 2009-2016 XL883N Iron, 2007-2012, XL1200N Nightster and 2012-2016 XL1200V Seventy-Two

Dyna models: 1993-2005 FXDL Low Rider, 1995-2005 FXD Super Glide, FXDC Super Glide Custom & FXDX Super Glide Sport

730982 Complete light tint windshield with Quick-Release mounting bracket kit, 13" (33cm) high and 16" (41cm) wide

731164 Light tint windshield only

731101 Mounting bracket kit only



Fits 2006 FXD 35th Anniversary, 2006-2017 FXDB Street Bob, 2007-2014 FXDC Dyna Superglide Custom, and 2006-2009 FXDL Low Rider

730983 Complete dark tint windshield with Quick-Release mounting bracket kit, 10.5" (27cm) high and 17" (43cm) wide

731165 Dark tint windshield only

731103 Mounting bracket kit only



Fits 1986-1990 & 2006 FLST Heritage Softail, 1987-2017 FLSTC Heritage Classic, 1990-2017 FLSTF & FLSTFB Fat Boy, 2005-2016 FLSTN DeLuxe and 2012-2017 FLS & FLSS Slim

Note: Will not fit with OEM or aftermarket spotlight bars

730984 Complete dark tint windshield with Quick-Release mounting bracket kit, 12.5" (32cm) high and 18.25" (46cm) wide

731166 Dark tint windshield only

731104 Mounting bracket kit only



Fits all FLHR, FLHRC and FLHRS Road King models 1994-2018

730985 Complete dark tint windshield with Quick-Release mounting bracket kit, 10.5" (27cm) high and 18" (46cm) wide

731167 Dark tint windshield only

731106 Mounting bracket kit only

01
HELMETS,
LUGGAGE,
AUDIO & MORE

02
SEAT

03
EXHAUST

04
ELECTRIC
& LIGHT

05
ENGINE
ELECTRICS

06
INTAKE

07
ENGINE

08
PRIMARY

09
TRANSMISSION

10
FINAL DRIVE

11
WHEELS &
TIRE

12
BRAKE

13
FOOT
CONTROL

14
HANDLEBAR

15
FRONT
SUSPENSION

16
CHASSIS/
FRAME
& SHOCKS

17
FENDER
& STRUTS

18
GAS TANK &
INSTRUMENT

19
OIL TANK, FILTER
& LINE

20
FASTENERS

21
MIRROR

22
WINDSHIELD

23
OIL, CHEMICALS
& TOOLS

24
TECHTIPS &
CROSS REF
> ZPN

25
CROSS REF
ZPN > PAGE

26
ALPHABETICAL
INDEX



GLADIATOR WINDSHIELD BY NATIONAL CYCLE

The Gladiator is custom look windshield. The clean appearance of this windshield is achieved by mounting it directly to the top handlebar clamp, leaving the bike's handlebars and forks uncluttered. This fully adjustable bracket uses National Cycle's Dual Pivot action, allowing infinite positioning for rider heights or weather conditions. A simple wrench is all that's needed, satisfyingly simple in a complex world. These windshields are made from the finest windshield material in the world, Lexan polycarbonate. This material is 20 times more impact resistant than acrylic or

other plastic windshields. Additionally this polycarbonate features National Cycle's exclusive Quantum coating. This provides 10 times better scratch resistance than any other windshield material on the market. Edges of the screen are radiused for safety and enhanced appearance. Gladiator windshields are 14 1/2" (37cm) high and are 12 1/2" (32cm) wide. They are available in Dark Tint or Light Tint with chrome or black mounting hardware and feature a 3-year warranty against breakage.

	Years	Chrome Hardware, Light Tint Shield	Chrome Hardware, Dark Tint Shield	Black Hardware, Light Tint Shield	Black Hardware, Dark Tint Shield
FLST Heritage Softail	1986-1990	731129	731130	731131	731132
FLSTC Heritage Softail Classic	1987-2008	731129	731130	731131	731132
FLSTF Fat Boy	1990-2006	731129	731130	731131	731132
FLSTF/FLSTFB Fat Boy/Lo	2007-2017	731147	731148	-	-
FLSTN Heritage Softail Nostalgia	1993	731129	731130	731131	731132
FLSTN/H Heritage Softail Nostalgia Special	1994-1996	731129	731130	731131	731132
FXD Dyna Super Glide	2006-2017	-	-	735215	735216
FXD/FXDX Dyna	1993-2005	731129	731130	731131	731132
FXD35 35th Anniversary Super Glide	2006	731129	731130	731131	731132
FXDB Dyna Street Bob	2006-2017	731139	731140	-	-
FXDC Dyna Super Glide Custom	2005-2006	731129	731130	731131	731132
FXDC Dyna Super Glide Custom	2007-2017	731129	731130	731131	731132
FXDF Dyna Fat Bob	2008-2017	731139	731140	-	-
FXDG Disc Glide	1983	731129	731130	731131	731132
FXDL Dyna Low Rider	1994-2005	731129	731130	731131	731132
FXDL Dyna Low Rider	2006-2017	731139	731140	-	-
FXDS Dyna Low Rider Convertible	1994-2000	731129	731130	731131	731132
FXDWG Dyna Wide Glide	1993-2005	731129	731130	731131	731132
FXDWG Dyna Wide Glide	2006-2008	731139	731140	-	-
FXDWG Dyna Wide Glide	2010-2017	731139	731140	-	-
FXR/FXRS Low Rider	1982-1994	731129	731130	731131	731132
FXST Softail Standard	1984-1990	731129	731130	731131	731132
FXST Softail Standard	1999-2007	731129	731130	731131	731132
FXSTB Softail Night Train	1999-2009	731129	731130	731131	731132
FXSTC Softail Custom	1987-1999	731129	731130	731131	731132
FXWG Wide Glide	1980-1985	731129	731130	731131	731132
XL 883 & XL 1200 Sportster	1988 to present	731133	731134	731135	731136
XL 883C & XL 1200C Sportster Custom	1996 to present	731137	731138	-	-
XL 883L & XL 1200L Sportster Low	2005 to present	731133	731134	731135	731136
XL 883R & XL 1200R Sportster Roadster	2002-2008	731133	731134	731135	731136
XL 1200N Nightster	2007-2012	-	-	735215	735216
XL 1200S Sportster Sport	1996-2003	731133	731134	731135	731136
XL 883N Iron	2009 to present	-	-	735215	735216
XR1200 & XR1200X	2008-2013	730978	730979	730980	730981



REPLACEMENT WINDSHIELD FOR ROAD KING

National Cycle offers this premium replacement for the OEM windscreen on your Road King. Made from clear 4mm thick polycarbonate, 33% thicker than the OEM shield, it is very crack resistant. The shield is coated with National Cycle's exclusive Quantum Hardcoating. This results in a scratch resistance 10 times greater than OEM. Height is measured from the headlight cutout in a vertical line level to the top of the screen in the fully raked forward position. Width is measured in a straight line across the back of the shield at its widest point. Both utilize the bikes stock mounting hardware. Fits Road King models from 1994 to present.

710940 Road King replacement windshield, height 20" (51cm), width 21 3/4" (555mm) (OEM 58193-94)

710941 Dark-tinted reduced height windshield. Height 14" (356mm), width 21 3/4" (555mm)



REPLACEMENT WINDSHIELD FOR HERITAGE SOFTAIL

National Cycle offers this premium replacement for the OEM windscreen on your FLSTC Heritage Softail. Made from clear 4mm thick polycarbonate, 33% thicker than the OEM shield, it is very crack resistant. The shield is coated with National Cycle's exclusive Quantum Hardcoating. This results in a scratch resistance 10 times greater than OEM. Overall height is 27" (685mm), width 21 3/4" (555mm). Also available in a dark-tinted 6" (15cm) shorter version. Both utilize the bikes stock mounting hardware. Fits FLSTC 2000-2017 and OEM Accessory detachable windshield kits 58243-95, 58278-95 & 57688-10. Not suitable for the rigid mount windshields 58018-86A & 58319-95A as these have a different drilling pattern.

710942 FLSTC replacement windshield (OEM 58241-95)

710943 Dark-tinted 6" reduced height windshield



NATIONAL CYCLE HAND DEFLECTORS

For the riders who prefer to be on their bike anytime, anywhere, in any type of weather, we offer National Cycle Hand Deflectors. Hand Deflectors are an easy-to-install solution for keeping your hands warm and dry. Coupled with a windshield, hand deflectors protect from the wind and rain. Deflectors are, depending on the application, secured to the control boss by your mirrors or to the turn signal mounts. They allow plenty of room for lever movements and for riders with large gloves. These deflectors make a windshield function like a fairing. All deflectors are clear acrylic and come with steel mounting hardware.

Fits FLH and FLT series Touring 1960 to present, FXSTB NightTrain 2000 thru 2009 and FLST Softail 1986 to present (except FLSTF FatBoy and FLSTS Springer)

731150 Hand deflectors, 9.75" (24.7cm) wide, 5 3/4" (14.6cm) high

Fits all Sportster 1983 thru 2003, FX 1970 thru 1985, FLSTF FatBoy 1990 to present, FLSTS Softail Springer, Dyna 1993 to present (except 2010 and later Dyna Wide Glide and 2008 to present FXDF Dyna FatBob), FXST Softail 1984 to present (except FXSTB NightTrain)

731151 Hand deflectors, 9.75" (24.7cm) wide, 5 3/4" (14.6cm) high

Fits 2005 thru 2007 FLSTC Heritage Springer and 2012 to present FLD Switchback

731171 Hand deflectors, 9.75" (24.7cm) wide, 4" (10.2cm) high

Fits all Sportster 2004 to present, including XR 1200

731152 Hand deflectors, 9.75" (24.7cm) wide, 4.38" (11.1cm) high

01
HELMETS,
LUGGAGE,
AUDIO & MORE

02
SEAT

03
EXHAUST

04
ELECTRIC
& LIGHT

05
ENGINE
ELECTRICS

06
INTAKE

07
ENGINE

08
PRIMARY

09
TRANSMISSION

10
FINAL DRIVE

11
WHEELS &
TIRE

12
BRAKE

13
FOOT
CONTROL

14
HANDLEBAR

15
FRONT
SUSPENSION

16
CHASSIS/
FRAME
& SHOCKS

17
FENDER
& STRUTS

18
GAS TANK &
INSTRUMENT

19
OIL TANK, FILTER
& LINE

20
FASTENERS

21
MIRROR

22
WINDSHIELD

23
OIL, CHEMICALS
& TOOLS

24
TECHTIPS &
CROSS REF
> ZPN

25
CROSS REF
ZPN > PAGE

26
ALPHABETICAL
INDEX



710667



710668



NATIONAL CYCLE REPLACEMENT SCREENS FOR FLH, FLHT AND FLHTC FAIRINGS

National Cycle replacement screens offer superior optics and diamond-like clarity. They are made of hard coated GE Lexan polycarbonate for lasting shine and durability. All screens are pre-drilled and precision formed and bolt straight on to the OEM fairings.

Fits 1986 thru 1995 FLHT and FLHTC fairings

710667 Clear, installed height 12"

710668 Light tinted, installed height 6"

Fits 1996 thru 1998 FLHT and FLHTC fairings

710660 Clear, stock height

710665 Light tinted, stock height

710666 Dark tinted, 4" lower than stock

Fits 1960 thru 1985 FLH fairings

710682 Clear, installed height 18"

710688 Tinted, installed height 18"

710689 Tinted, installed height 7"



WINDSHIELDS FOR FL MODELS

These windshields are designed to fit the 4 Speed FL models from 1960 thru 1984 as OEM replacements. Made from acrylic for additional strength and light weight. Feature chrome braces and easy to replace windows, which are interchangeable with OEM parts. Adjustable windows and lower windows separately available. Windshields are 22" (56cm) wide, have a 27 1/2" (70cm) overall height and measure 20 7/8" (53cm) from the top to the headlight cut-out. Each kit comes complete with hardware.

Complete windshield kits

163041 With clear upper and lower windows (OEM 57996-60)

163049 With clear upper and red lower windows

163050 With clear upper and blue lower windows

Replacement upper window

163048 Clear

Replacement lower windows

163042 Clear

163043 Blue

Replacement adjustable windows

163046 Blue

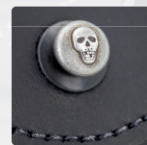


CIRO PANORAMIC VENTED WINDSHIELD

Update your 1996 thru 2013 style BatWing windshield to today's newest technology with the Ciro Panoramic Updraft and Vented Windshield. This 6 1/2" (16cm) high windshield replaces the stock item and brings venting, a curved upper lip, and extra width together to create a breakthrough in rider and passenger experience. Fits 1996 thru 2013 style BatWing fairings on Street Glides, Electra Glides and Tri-Glides.

754000 Light Smoke

754001 Medium Smoke



TEXAS LEATHER SKULLED WINDSCREEN BAGS

Feature a spring loaded Skulled opening/closing button. They feature a hole in the center of the back to bolt them to the center screw of your windscreen.

757008 Small. Height 4" (10cm), width 7" (18cm), 1 1/2" (4cm) deep at the top and 2 1/2" (6cm) deep at the lower side

757009 Large. Height 5 1/8" (13cm), width 10 1/4" (26cm), 2" (5cm) deep at the top and 2 7/8" (7.3cm) deep at the lower side



TEXAS LEATHER WINDSCREEN/FRAMEBAG

Texas Leather luggage is exclusively available from your Zodiac dealer. This windscreen/framebag is made from tough, real cowhide leather, features extra wide 1" (2.5cm) straps. Height 6.3" (16cm), width 11" (28cm), and 4" (10cm) deep. Including straps to tie the bag to your windscreen or frame.

756971 Texas Leather windscreen/framebag



NEW



TOMMY & SON'S

SEVEN SINS BATWING WINDSHIELD

When you want to give your stock Bat Wing some cooler looks by blending the windshield in with the fairing, this is a great alternative: a fiberglass windshield that comes with a white gel coat finish, ready for painter's preparation. The centered point directs the air slightly away from the rider.

761126 Fits all Batwing fairings 1996-2013

761128 Fits FLTR fairings 1998-2013





NATIONAL CYCLE HOLDSTER WINDSHIELD STORAGE BAGS FOR HEAVY-DUTY WINDSCREENS

Both the Triple and Single Holdster are made from quality, heavy grade synthetic leather for durability, and weather resistance. The material is UV treated and tested. Holdsters give you a distinctive storage compartment on the inside of your windshield and they mount directly to National Cycle's Heavy-Duty windshield frames. The Triple Holdster has a main pouch of 11.5"x5"x3" (29.2x12.7x7.6cm) and 2 side pouches of 4.5"x4.5"x3" (11.4x11.4x7.6cm). The Single Holdster measures 11.5"x5"x3" (29.2x12.7x7.6cm).



710696 Triple Holdster storage bag

710697 Single Holdster storage bag for Custom Heavy Duty, Low Boy Heavy Duty and Ranger Heavy Duty windscreens



RAINZIP WINDSHIELD TREATMENT

To keep your windshield clear in rainy weather, National Cycle developed RainZip, a specially formulated rain repellent treatment. It is safe to use on your National Cycle Quantum hard coated windshields like the V-Stream, Wave, Switchblade or Heavy Duty. And, it's safe to use on ANY motorcycle windshield, plus helmet face shields and goggles. RainZip is hydrophobic, so when rain accumulates on your windshield, RainZip will cause it to effectively bead up and blow away, even at riding speeds of only 20-30MPH (30-40 km/h). RainZip will give you a clearer view of the road ahead... especially when it's wet! Comes in a 3-oz. (90 cc) bottle with application cloth, which is enough to keep your windshield rain-free for a long time.

735217 RainZip with application cloth



FAIRING PROTECTION

The Bike Bumper is a revolution in motorcycle fairing protection ensuring the highest level in security when transporting motorcycles. Never again you have to deal with scuffed paint from the dangers of hauling. Providing the ultimate in fairing protection the Bike Bumper adds an extra layer of security to your investment keeping accidents from becoming costly and frustrating. Double layered padding keeps bikes safe from rocks and road debris, jostling trailer straps, other bikes and equipment and helps maintain your peace of mind while hauling. Extra thick neoprene padding at the outer edges ensures even more protection for the most vulnerable parts of the fairing by completely surrounding the outer edge with soft padding. Finally, highly durability elastic straps keep the protector completely secured to the fairing.

747619 Fits all 1996 thru 2013 Touring models with a Batwing style fairing, except Street Glides and others with fairing-fitted mirrors



CIRO BAT BLADES BATWING FAIRING ACCENTS

Make your fairing pop with the Ciro Bat Blades! These innovative strips feature ultra bright white LEDs to work as daytime running lights and also amber turn signals on each side to be sure you are seen. Low profile black circuit board blends in seamlessly when the bike is off. White lights fade when turn signals are on so the amber really stands out. Easy plug and play installation, requires no drilling, cutting, or splicing. Available for most Touring models with a Batwing fairing.

754160 Fits 1996 thru 2005 Batwing fairings

754161 Fits 2006 thru 2013 Batwing fairings

754162 Fits 2014 to present Batwing fairings



DOCKING POINT BUSHINGS

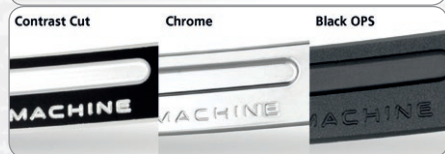
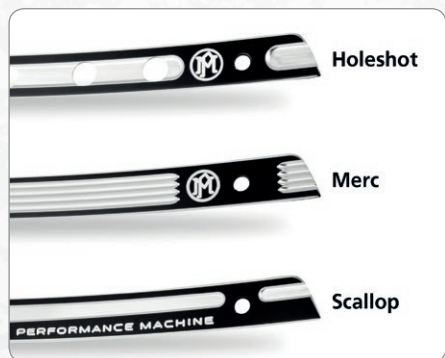
Bushings as supplied with many OEM Harley Detachable windshield kits, docking kits and so on.

750397 Docking point bushing, each (OEM 67621-94)



Texas Leather is high quality luggage, made from tough, real cowhide leather. The closing straps are 1" (2.5cm) wide and also made of leather. Texas Leather luggage is exclusively available from your Zodiac dealer.

01	HELMETS, LUGGAGE, AUDIO & MORE
02	SEAT
03	EXHAUST
04	ELECTRIC & LIGHT
05	ENGINE ELECTRICS
06	INTAKE
07	ENGINE
08	PRIMARY
09	TRANSMISSION
10	FINAL DRIVE
11	WHEELS & TIRE
12	BRAKE
13	FOOT CONTROL
14	HANDLEBAR
15	FRONT SUSPENSION
16	CHASSIS/FRAME & SHOCKS
17	FENDER & STRUTS
18	GAS TANK & INSTRUMENT
19	OIL TANK, FILTER & LINE
20	FASTENERS
21	MIRROR
22	WINDSHIELD
23	OIL, CHEMICALS & TOOLS
24	TECHTIPS & CROSS REF > ZPN
25	CROSS REF ZPN > PAGE
26	ALPHABETICAL INDEX



PERFORMANCE MACHINE WINDSHIELD TRIMS

With a "leave nothing undone" philosophy Performance Machine couldn't overlook the need for a custom windscreen trim to distinguish your fairing from the sea of stock. CNC laser cut from 6061-T6 aluminum and precision machined for a perfect fit. Complete with chrome plated hardware.

Fits 1998 thru 2013 Touring models (except FLTR)

- 756902** Holeshot, black Contrast Cut
- 756903** Holeshot, chrome
- 756904** Holeshot, 2-tone structured black OPS
- 756905** Merc, black Contrast Cut
- 756906** Merc, chrome
- 756907** Merc, 2-tone structured black OPS
- 756908** Scallop, black Contrast Cut
- 756909** Scallop, chrome
- 756910** Scallop, 2-tone structured black OPS

Fits 1998 thru 2013 FLTR Road Glide

- 756808** Holeshot, black Contrast Cut
- 756809** Holeshot, chrome
- 756810** Holeshot, 2-tone structured black OPS
- 756811** Merc, black Contrast Cut
- 756812** Merc, chrome
- 756813** Merc, 2-tone structured black OPS
- 756814** Scallop, black Contrast Cut
- 756815** Scallop, chrome
- 756816** Scallop, 2-tone structured black OPS

Fits 2014 to present Touring except FLTR Road Glide

- 756911** Holeshot, black Contrast Cut
- 756912** Holeshot, chrome
- 756913** Holeshot, 2-tone structured black OPS
- 756914** Merc, black Contrast Cut
- 756915** Merc, chrome
- 756916** Merc, 2-tone structured black OPS
- 756917** Scallop, black Contrast Cut
- 756918** Scallop, chrome
- 756919** Scallop, 2-tone structured black OPS

Fits 2015 to present FLTR Road Glide

- 756817** Holeshot, black Contrast Cut
- 756818** Holeshot, chrome
- 756819** Holeshot, 2-tone structured black OPS
- 756820** Merc, black Contrast Cut
- 756821** Merc, chrome
- 756822** Merc, 2-tone structured black OPS
- 756823** Scallop, black Contrast Cut
- 756824** Scallop, chrome
- 756825** Scallop, 2-tone structured black OPS



CIRO WINDSHIELD TRIM

The Ciro windshield trim is a clean and classy piece, designed to work with the body lines of 2014 to present Harley-Davidson FLHTCU, FLHTCUL, FLHTK, FLHTKL & FLHTKSE Electra Glide, FLHX, FLHXS & FLHXSE Street Glide and FLHTCUTG Tri-Glide models and smooth out the front end of your bike. Specially designed to flow with the natural accent lines of the fairing. **Note:** Installation on FLHXSE and FLHTKSE requires removal of the original trim.

- 754173** Chrome
- 754216** Chrome with LED ribbon lighting
- 754174** Black
- 754217** Black with LED ribbon lighting



CIRO WINDSHIELD SCREW CAP KIT

Make your windshield trim stand apart with a kit of diamond cut screw caps. Cover the eyesore of dull windshield bolts and really make it shine. Compliments the Ciro Windshield Trim. Available in chrome or contrasting black and chrome. Fits the BatWing fairing on all 1996 to present Electra Glide, Street Glide and Tri-Glide.

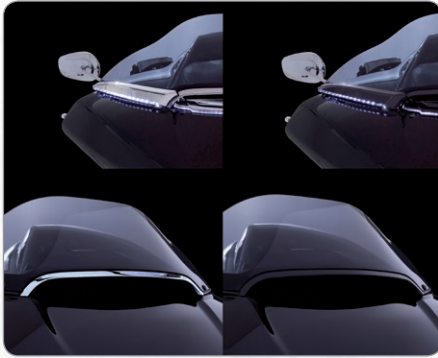
- 754175** Chrome
- 754176** Black



CIRO FAIRING INTAKE TRIM

Ciro has designed the most appealing and innovative fairing vent trim on the market today. The LED lighted version features light pipe technology that creates a mesmerizing effect. The vent trim will not affect the flow of the fairing vent. Made out of ABS and comes with 3M automotive grade adhesive for easy installation. The LED light module plugs directly into the stock wiring harness with no cutting, drilling, or splicing. Fits all 2014 to present Harley-Davidson Electra Glide, Street Glide, Tri Glide and Ultra Limited models with an OEM Batwing fairing

- 754031** Chrome Lighted
- 754032** Chrome unlighted
- 754033** Black Lighted
- 754034** Black unlighted



CIRO WINDSHIELD TRIMS FOR ROAD GLIDE

The Ciro Horizon LED Lighted Windshield Trim adds bright white LED running lights and amber sequential turn signals to the front of your bike in the cleanest way possible. The LEDs and hardware are both hidden behind a masterfully designed chrome or black steel trim piece that complements the styling of your Road Glide. Matches perfectly with the Ciro Center Windshield Trim. It is the perfect way to cover up the weather-beaten rubber gasket on the front of your windshield. Made from steel and available in chrome or black, this is the cleanest way to eliminate that dull trim on the front of your bike. Fits 2015 to present FLTRU, FLTRX, FLTRXS & FLTRXSE Road Glide.

Note: Running lights work only on US Domestic market models

754218 Chrome windshield side trims

754219 Black windshield side trims

754220 Chrome windshield center trim

754221 Black windshield center trim



CIRO CHROME DASH ACCENT

Ciro has set the bar high with the design of their Chrome Dash accent. The unlit version allows you to customize your fairing and gauges with a custom fit chrome cover. The LED backlight version also lights the gauges with a multitude of colors when used with Ciro's Shock & Awe manual encoder or Bluetooth controller. The encoder or controller allows you to wire all chrome fairing accessories together to get the same colors. With the Bluetooth controller you can even have the fairing accessories on one channel and your bike LEDs on another channel. This gives you millions of options for color, brightness and functions. The dash accent fits the fairings on 2014 to present Harley-Davidson Touring models, except Screamin' Eagle models.

754048 Unlit Chrome dash accent

754047 Multi-color LED chrome dash accent

754044 Rotary controller only

754203 BlueTooth controller only

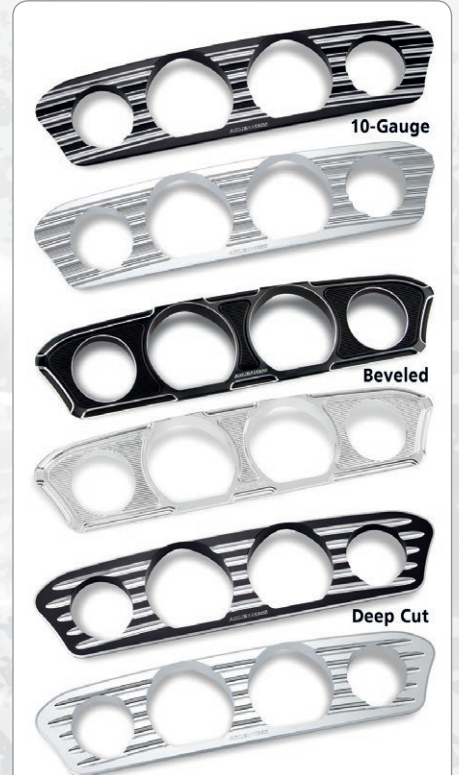


GENUINE ZODIAC FAIRING VENT ACCENT FOR 2014 TO PRESENT TOURING & TRIKE

Easy to install fairing accent that changes the looks of your Batwing fairing from boring to thrilling. Fits all 2014 to present Electra Glide, Street Glide, Tri Glide and Ultra Limited models.

160013 Chrome (OEM 61300505)

160014 Black



ARLEN NESS

ARLEN NESS INNER FAIRING GAUGE TRIM

Add some style to your dull black inner fairing with these billet aluminum fairing and gauge trims. Features a one-piece design that surrounds all 4 gauges and fills the recessed area in factory inner fairings, simple and fast installation and matches other billet accent trims like speaker grills and tank dashes (see elsewhere in our catalog). Fits 2014 to present FLHT, FLHX and FLHTCUTG models.

A30330 10-Gauge black

A30340 10-Gauge chrome

A30331 Beveled black

A30341 Beveled chrome

A30332 Deep Cut black

A30342 Deep Cut chrome

01	HELMETS, LUGGAGE, AUDIO & MORE
02	SEAT
03	EXHAUST
04	ELECTRIC & LIGHT
05	ENGINE ELECTRICS
06	INTAKE
07	ENGINE
08	PRIMARY
09	TRANSMISSION
10	FINAL DRIVE
11	WHEELS & TIRE
12	BRAKE
13	FOOT CONTROL
14	HANDLEBAR
15	FRONT SUSPENSION
16	CHASSIS/ FRAME & SHOCKS
17	FENDER & STRUTS
18	GAS TANK & INSTRUMENT
19	OIL TANK, FILTER & LINE
20	FASTENERS
21	MIRROR
22	WINDSHIELD
23	OIL, CHEMICALS & TOOLS
24	TECHTIPS & CROSS REF > ZPN
25	CROSS REF ZPN > PAGE
26	ALPHABETICAL INDEX

01
02
03
04
05
06
07
08
09
10
11
12
13
14
15
16
17
18
19
20
21
22
23
24
25
26

NEW



TOMMY & SON\$

TOMMY & SONS 1998-2013 BATWING STYLE FAIRINGS

These inner and outer Batwing style fairings are made from fiberglass in precision build moulds by Tommy & Sons. Available as stock replacement inner and outer fairings, as well as a special detachable version for custom fitment on Road King models except FLHRS. For FLHT models we have Heavy-Duty upper and lower fairing bracket kits available. Tommy & Sons fairings come with a white gel coat finish, ready for your painter's preparation.

Stock replacement for 1993-2013 Electra Glide, 2006-2013 Street Glide and 2009-2013 Trike

761114 Outer fairing without screen (OEM 58198-96, 58236-96)

351565 Upper mounting brackets (OEM 58938-96C & 58939-96C)

351567 Lower mounting brackets (OEM 58478-96B & 58479-96B)

NEW



TOMMY & SON\$

TOMMY & SONS BATWING STYLE FAIRING FOR ROAD GLIDE HEADLIGHTS

Inner and outer Batwing fairing sets with an attitude take the dual headlight set-up from Road Glide models. They come complete with mounting brackets and take stock and aftermarket instruments and stereo equipment. Fairings are made from fiberglass in precision build moulds by Tommy & Sons. Have a white gel coat finish, ready for your painter's preparation. Headlights and windshield must be ordered separately.

Fits 1997-2013 Touring and 2009-2013 Trike

761165 Inner & outer fairing without screen and headlights



NEW



TOMMY & SON\$

TOMMY & SONS BATWING STYLE FAIRING FOR 2014 TO PRESENT

Made from fiberglass in precision build moulds by Tommy & Sons. Have a white gel coat finish, ready for your painter's preparation.

Stock replacement for 2014 to present FLHT, FLHTK, FLHX, FLHXS, FLHTCUTG

761167 Outer fairing without screen (OEM 57000383)



Fits 1993 to present FLHR Road King models

761115 Fairing inner & outer



Fits 2014 to present Touring & Trike

761166 Inner & outer fairing without screen and headlights



HEAVY DUTY BATWING BRACKETS

The stock mounting brackets for the Batwing fairings as found on 1996 thru 2013 Touring models break quite often. These reinforced brackets hold longer and are as easy to fit as the stock ones. Upper or lower brackets are sold in sets of left and right.

351565 Upper mounting brackets (OEM 58938-96C & 58939-96C)

351567 Lower mounting brackets (OEM 58478-96B & 58479-96B)



CIRO LIGHTED VENT TRIM FOR ROAD GLIDE

Features 30 super bright white LEDs in a low-profile chrome or black housing to really draw attention to the front of your Road Glide. The housing is a clean design that sits perfectly in the vent of your fairing, but will not affect the airflow. Fits 2015 to present FLTRU, FLTRUSE, FLTRX, FLTRXS & FLTRXSE Road Glide.

754222 Chrome

754223 Black





ROAD GLIDE FAIRING

Perfect copies of the stock FLTR Road Glide inner and outer fairing. Made out of fiberglass in precision built moulds by Double G Baggers. The fairings have a white gel coat finish, ready for your painter's preparation. Fairings fit all 1998-2013 FLTR models.

Note: Double G inner and outer fairings are made to be installed together. Due to the different material and manufacturing process they are not guaranteed to fit with OEM inner or outer fairings.

746947 Inner fairing (OEM 58735-98D)

746946 Outer fairing (OEM 58733-98B)

761127 Pointed headlight bezel



ARLEN NESS

ARLEN NESS ORIGINAL FAIRING KITS

The fairing that started it all. Universal design can be used on various applications. Fairing body constructed in heavy ABS plastic. Windshield is smoked Plexiglas. Kit includes fairing body, smoked windshield, universal mounting brackets and windshield mounting screws. Arlen Ness suggests to use these fairings with drag style handlebars. Installation on Narrow Glide front ends is easiest using A06048 custom headlight brackets. Installation on Wide Glide and inverted front ends require fabrication of custom mounting brackets.

Note: Please check fit and finish prior to painting. Neither Arlen Ness nor Zodiac will be responsible for any damage sustained to paint jobs.

A06041 Plain fairing

A06043 Louvered fairing

Accessories

A06048 Custom headlight brackets

Replacement parts

A06047 Smoked windscreen

A06049 Fastener kit



ARLEN NESS

ARLEN NESS BOB DRON FAIRING FOR ROADKING

Accepts factory spot lights. Fairing body constructed from heavy ABS plastic. Windshield is smoked Plexiglas. Kit includes fairing body, smoked windshield, stainless steel mounting brackets and mounting hardware.

Note: Please check fit and finish prior to painting. Neither Arlen Ness nor Zodiac will be responsible for any damage sustained to paint jobs.

A06950 Bob Dron Fairing kit

A06951 Replacement windshield



ARLEN NESS

ARLEN NESS DIRECT BOLT-ON FAIRING KIT FOR DYNA & SPORTSTER

Easy to install handlebar fairings with a ABS plastic body and smoked Plexiglas windshield.

Note: Please check fit and finish prior to painting. Neither Arlen Ness nor Zodiac will be responsible for any damage sustained to paint jobs.

Fits 2006 thru 2017 FXD Super Glide, FXDB Street Bob, FXDC Super Glide Custom and FXDL & FXDLS Low Rider
A06033 Gloss black finish
A06035 Paintable finish



Fits 2007 thru 2012 XL1200N Nightster and any XL model with 39mm forks, top mount headlight and Nightster style handlebars
A06037 Gloss black finish
A06039 Paintable finish

Fits 2016 to present XL1200X Forty-Eight

A06038 Gloss black finish

Replacement wind screen

A06047 Smoked windscreen



BREAKOUT HEADLIGHT SHROUD

The headlight on the Milwaukee Eight Softail Breakout looks a little as if the Harley design department was not ready before the bike went into production. Rick's fiberglass shroud hides the ugly back of the stock headlight and upgrades the total look of the front end. Easy to bolt on and comes in a white gel coat finish, ready for your painters preparation. Fits 2018 to present FXBR & FXBRS Breakout.



741222 Rick's Breakout headlight shroud

01	HELMETS, LUGGAGE, AUDIO & MORE
02	SEAT
03	EXHAUST
04	ELECTRIC & LIGHT
05	ENGINE ELECTRICS
06	INTAKE
07	ENGINE
08	PRIMARY
09	TRANSMISSION
10	FINAL DRIVE
11	WHEELS & TIRE
12	BRAKE
13	FOOT CONTROL
14	HANDLEBAR
15	FRONT SUSPENSION
16	CHASSIS/FRAME & SHOCKS
17	FENDER & STRUTS
18	GAS TANK & INSTRUMENT
19	OIL TANK, FILTER & LINE
20	FASTENERS
21	MIRROR
22	WINDSHIELD
23	OIL, CHEMICALS & TOOLS
24	TECHTIPS & CROSS REF > ZPN
25	CROSS REF ZPN > PAGE
26	ALPHABETICAL INDEX



BURLY BRAND FAIRINGS

Universal design fairings for use with 5 3/4" headlights. Fairings are made of molded ABS and come with a opaque impact resistant Acrylic windscreen and black powder coated steel mounting brackets for a great range of adjustability fitting 35 thru 49mm front forks. Both Touring Sport fairings feature styling pockets left and right from the headlight, these offer great potential for further customization with lighting.



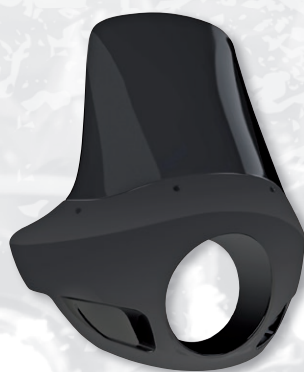
759988 Outlaw



759990 Touring Sport



759989 Café Sport



759991 Tall Touring Sport



Headlight installation kit to fit any of these fairings on a 2018 to present FXFB Fat Bob Softail

759975 Complete installation kit including bracket, H4 wire loom and black 5 3/4" round headlight housing (light unit not included) for Burly Brand Touring Sport and Tall Touring Sport fairing

759974 Complete installation kit including bracket, H4 wire loom and black 5 3/4" round headlight housing (light unit not included) for Burly Brand Outlaw and Café Sport fairing



759976 H4 wire loom conversion for 2018 to present Softail (52cm/20")



759979 Black bottom mount head light bracket for Burly Brand Touring Sport and Tall Touring Sport fairings on 2018 to present FXFB Fat Bob Softail

759977 Black bottom mount head light bracket for Burly Brand Outlaw and Café Sport fairings on 2018 to present FXFB Fat Bob Softail