



Diagnostic, Tuning & Fuel Injection Tools 23-066

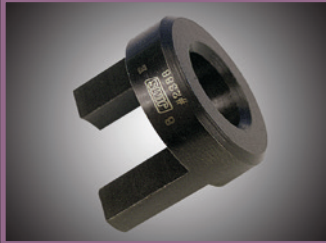


Standard & Universal Tools 23-066



Electrical System Tools 23-067

23



Valve Train Tools 23-067



Oil Pump & Oil Filter Tools 23-067



Transmission Tools 23-067



Final Drive Tools 23-067



Wheel & Tire Tools 23-068



Manuals 23-068



Motorcycle Lift 23-068



Catalog, Signs & Flags 23-068

01
HELMETS,
LUGGAGE,
AUDIO & MORE

02
SEAT

03
EXHAUST

04
ELECTRIC
& LIGHT

05
ENGINE
ELECTRICS

06
INTAKE

07
ENGINE

08
PRIMARY

09
TRANSMISSION

10
FINAL DRIVE

11
WHEELS &
TIRE

12
BRAKE

13
FOOT
CONTROL

14
HANDLEBAR

15
FRONT
SUSPENSION

16
CHASSIS/
FRAME
& SHOCKS

17
FENDER
& STRUTS

18
GAS TANK &
INSTRUMENT

19
OIL TANK, FILTER
& LINE

20
FASTENERS

21
MIRROR

22
WINDSHIELD

23
OIL, CHEMICALS
& TOOLS

24
TECHTIPS &
CROSS REF
> ZPN

25
CROSS REF
ZPN > PAGE

26
ALPHABETICAL
INDEX



SONIC
equipment

SONIC WIFI ENDOSCOPE

This USB-rechargeable endoscope is a handy diagnostic tool to inspect small or tight spaces. Connect the endoscope via WiFi to PC, laptop, tablet or smartphone and it is ready for use. The camera is 5.5mm in diameter and is equipped with adjustable LED lighting. Videos and photos can be taken of the objects to be inspected by pressing the record button. The camera can be fitted with the included mirror to inspect under an angle. The camera can also be equipped with the included hook or a magnet to directly remove objects from the inspection area. The length of flexible camera probe is 3.5 meters.

745672 Sonic WiFi endoscope



NEW

DOCTOR ROSSI'S STETHOSCOPE

Doctor Rossi's stethoscope pinpoints internal engine noise by amplifying vibrations resonating through the metal probe. Simply touch the probe to the engine, and follow the noise to its loudest point. Hassle free as it uses no batteries, no computers so you will never have to update.

754721 Mechanic's stethoscope



OIL PRESSURE TEST KIT

Oil pressure test kit helps to locate faults in the oil pump system. Has scale for 0-35 Bar and 0-500 PSI with a tolerance of $\pm 5\%$. Can be used for almost any diesel or petrol engine. Includes adaptors R 1/8" DIN 2999, 1/8"x27 NPT, 1/4"x18 NPT, 3/8"x20 UNF, 1/2"x20 UNF, M10x1, M12x1.5, M14x1.5, M16x1.5 and M18x1.5 - 90°.

754722 Oil pressure kit



NEW

OIL DRAIN JERRYCAN

Plastic jerry can with build-in drain pan is indispensable for a clean oil change. Holds 8 liters of waste oil. Height 12cm.

780949 Oil drain jerry can



NEW

SONIC
equipment

SONIC TOOL BAG

The Sonic Tool Bag allows you to comfortably carry your tools on back or by hand. Easy opening zippers allows access to the tools with numerous storage compartments. Enclosed pouches are located on both external and internal surfaces to provide additional security. Durable water proof rubber bottom protects contents from the elements while providing a non-tipping base to work from. Adjustable padded mesh shoulder straps and

breathable EVA padded back offer both protection and comfort. Sturdy construction makes this backpack an ideal storage solution for people on the go. The Sonic Tool Bag measures 33x24x47cm, has a volume of 16 Liter and takes up to 20kg of tools.

745673 Sonic tool bag



NEW

INCH SIZE BALL END ALLEN KEY SETS

CV-steel key set for socket head screws, also known as internal hexagons. The ball end allows to use them under an angle of up to 35 degrees. Contains one of each 1/16", 5/64", 3/32", 1/8", 5/32", 3/16", 1/4", 5/16" and 3/8" size keys and a sturdy plastic holster.

754710 Short "Stubby" ball end Allen key set, inch sizes



754719 Long ball end Allen key set, inch sizes

NEW



VINTAGE STYLE WRENCHES FOR M18 SPARK PLUGS

OEM replica wrench works with the stock style air cooled M18 x 1.5 spark plugs, the OEM styled wrench works with modern spark plugs like the Champion D-14 and D-16. Works on all Harley-Davidson singles 1926-1934, all 45CI models, all Flathead Big Twins and all Knuckleheads.

762651 OEM replica spark plug wrench (OEM 11229-40)

762650 OEM style spark plug wrench for Champion D-14 and D-16

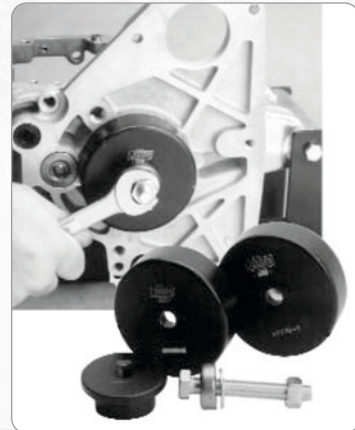
NEW



RESEAL TOOL FOR EARLY CAST IRON OIL PUMPS

Tool will facilitate ball burnishing of the relief valve seat on cast iron oil pumps as on 1936-1952 45CI (W-models), 1936-1964 45CI Servicars (G-models) and 1941-1968 FL's.

789826 Oil pump reseal tool



JIMS 5-SPEED MAIN BEARING REMOVER TOOL

This tool will make your life much easier when removing the main bearing on all 1980-2006 Big Twin and Twin Cam 5-speed transmissions and aftermarket 6-speed transmissions using a 5-speed style transmission case. Removes the old bearing straight and will not damage the transmission case, even with the transmission still in the frame.

753702 Jims main bearing remover tool

NEW



CABLE OILER TOOL

Clamp over brake, clutch, enricher, throttle or idle cable and use a spray can to oil the cable. You're done as soon as lubricant drips out of the other end of the cable.

780900 Cable lube tool

NEW



JIMS MILWAUKEE EIGHT OIL PUMP ALIGNMENT TOOL

Assembling the cam support plate along with oil pump, gerotors and pump cover to perfectly align with the pinion shaft flat, all while properly seating the oil pump O-ring in the crankcase can be a challenge for one set of hands. This JIMS oil pump alignment tool is the perfect aid for the technician to either assemble the individual components with supplied studs or as an assembly with the alignment dowel. Works on all Milwaukee Eight engines in 2017 to present Touring, 2017 to present Trike and 2018 to present Softail.

756315 Jims M-8 oil pump alignment tool

NEW



DRUM BRAKE SPROCKET RIVET TOOL

This 2 piece parkerized sprocket rivet tool set includes one rivet set for heading rivet and one dowel punch to align the rivet, so the sprocket and drum shell fit tightly together. Works on all 1930-1972 Big Twin and 45CI Solo.

789880 Sprocket rivet tool set

NEW



JIMS TWIN CAM & M-8 MAGNETIC TAPPET HOLDERS

Another time saver from Jims. Simply install this pair of tools over the tappet covers and the rare earth magnets hold the tappets in their bores when the cam is removed. Comes in a form fitted tray to protect the magnets from damage when stored. Works on all 1999-2017 Twin Cam and 2017 to present Milwaukee Eight engines.

756316 Jims magnetic tappet holder tool set

NEW



RATCHET CRIMPING PLIERS FOR DEUTSCH SOLID PINS

This ratchet action tool makes crimping Deutsch solid pins fast and easy.

754720 Ratchet crimping pliers

01
HELMETS,
LUGGAGE,
AUDIO & MORE02
SEAT03
EXHAUST04
ELECTRIC
& LIGHT05
ENGINE
ELECTRICS06
INTAKE07
ENGINE08
PRIMARY09
TRANSMISSION10
FINAL DRIVE11
WHEELS &
TIRE12
BRAKE13
FOOT
CONTROL14
HANDLEBAR15
FRONT
SUSPENSION16
CHASSIS/
FRAME &
SHOCKS17
FENDER
& STRUTS18
GAS TANK &
INSTRUMENT19
OIL TANK, FILTER
& LINE20
FASTENERS21
MIRROR22
WINDSHIELD23
OIL, CHEMICALS
& TOOLS24
TECHTIPS &
CROSS REF
> ZPN25
CROSS REF
ZPN > PAGE26
ALPHABETICAL
INDEX

01
02
03
04
05
06
07
08
09
10
11
12
13
14
15
16
17
18
19
20
21
22
23
24
25
26



NEW

FOLDABLE WHEEL STAND

Use to lace wheels or balance tires up to 23" diameter. Works with wheel axle size from 15mm and up. Wheel stand is foldable to reduce storage space.

780901 Foldable wheel stand



NEW

HEAVY DUTY WHEEL STAND

Use to lace wheels or balance tires up to 23" diameter. Works with wheel axle size from 15mm and up.

780902 Heavy Duty wheel stand



NEW

UNIVERSAL SPOKE WRENCH

Low cost six-jaw spoke wrench for semi-professional use.

780948 Multi-fit 6-Jaw type spoke wrench

NEW



MANUALS AND SPARE PARTS CATALOGS FOR VINTAGE MODELS

A must for every owner of a vintage Harley-Davidson. Available in English only.

For 1937-1948 EL Knucklehead, 1937-1948 UL Flathead and 1941-1949 FL Panhead models
782985 Spare parts catalog (OEM 13850-49)

For 1937-1947 EL Knucklehead and 1937-1948 UL Flathead
782986 Service manual

For 1942-1944 WLC Canadian Army 45CI models
782987 Operators manual, WLC specific
782992 Technical manual, WLC specific
782990 Technical manual, combined WLA & WLC
782991 Service manual, combined WLA & WLC

For 1940 and later WLA Army 45CI models
782988 Spare parts catalog
782990 Technical manual
782991 Service manual
782993 Mechanics handbook

For 1938-1950 WL 45CI Solo and G 45CI Servicar models
782994 Spare parts catalog (OEM 13851-50)

NEW



CREEPER SEAT

The creeper seat allows to work on a bike while sitting down. The four swivel wheels make it easy to move around and the three storage trays under the seat give place to store tools and parts.

780919 Creeper seat

NEW



999912



999913



999914



999915



999916



999917



999919

ZODIAC SHOW BIKE STICKERS

Full color stickers measure 10.4 x 10.4 cm.

999918 Set of seven with one of each

999912 Black Prince, 10-pack

999913 Beach Cruiser, 10-pack

999914 The Bobber, 10-pack

999915 Orange Crush, 10-pack

999916 The Naked Truth, 10-pack

999917 Zodiac's 50th Anniversary Gold Digger, 10-pack

999919 Captain Larry, 10-pack