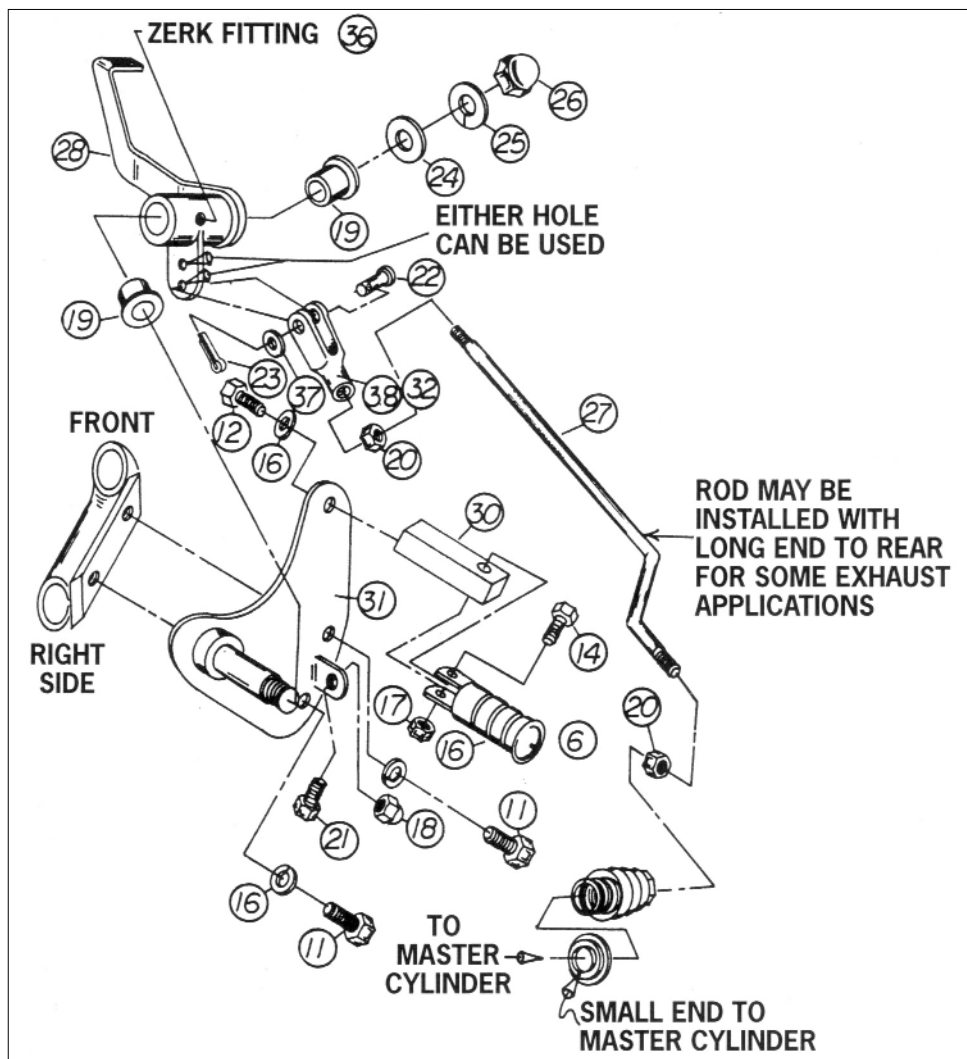


056083

FORWARD CONTROL KIT FOR FXR MODELS



Warning: Recheck all nuts, bolts and fittings for proper location, fit and torque. Check brake system and be sure the brakes work correctly. Test ride the bike at slow speed to make sure it is operating correctly before open road use.

Caution:

It is very important that when putting on the new brake rod (27) that a minimum of 3/4"-1" play is in the foot pedal. When installing the shift lever retainer (10), loosen rear crank case bolt, insert retainer and re-torque to 15-19 foot pounds applied to nut. Hold bolt to prevent turning. Refer to your OEM service manual for additional info.

Warning: Recheck all nuts, bolts and fittings for proper location, fit and torque. Test ride the bike at slow speed to make sure it is operating correctly before open road use.

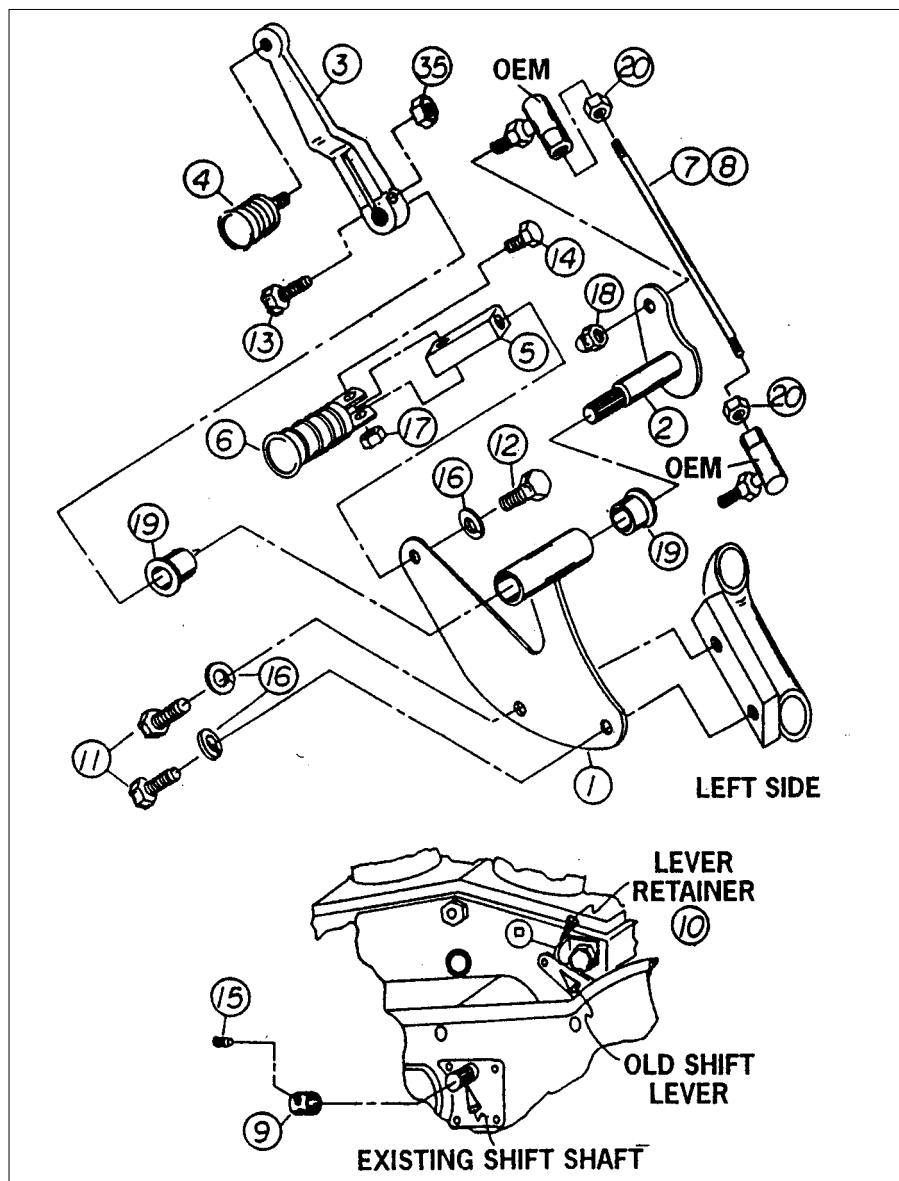
Right side

1. Remove brake lever stop, back pushrod all the way off plunger, remove foot peg and brake lever bracket mounting bolts. Take entire assembly from the bike.
2. Remove front Highway foot peg and bracket.
3. Mount main brake bracket (31) to frame using two bolts (11) and two lock washers (16). Install bolt (21) and nut (18) onto stop tab.
4. Assemble long foot peg mount (30) to main brake bracket using bolt (12) and lock washer (16). Add foot peg (6) using bolt (14) and nut (17).
5. screw zerk fitting (36) into brake pedal (28), insert two bushings (19) into pedal base, slide on-to main brake bracket (31) shaft and install flat washer (24), lock washer (25) and acorn nut (26). Lubricate with grease.
6. Thread jam nuts (20) all the way on-to both ends of the brake rod (27) and screw clevis (38) (short clevis for late 1987- up, (32) long clevis for all others) onto long end of brake rod. **NOTE: IN SOME APPLICATIONS IT MAY BE NECESSARY TO REVERSE THE BRAKE ROD, USING THE SHORT END FORWARD, TO CLEAR EXHAUST SYSTEM.**
7. Screw bent end of brake rod into master cylinder plunger by turning hex nut on plunger. Place clevis on-to brake arm (28) and install clevis pin (22), flat washer (37) and cotter key (23). See caution on illustration.
8. Adjust all hardware to proper specifications.

Note: Use blue Loctite on the first three threads of all hardware.

056083

FORWARD CONTROL KIT FOR FXR MODELS



BILL OF MATERIAL		DESCRIPTION
NO	QTY	
1	1	Main bracket shifter
2	1	Shift lever and shaft
3	1	Foot lever
4	1	Shift rubber
5	1	Foot peg mount short
6	2	Foot peg
7	1	Shift rod 2 right threads
8	1	Shift rod left & right threads
9	1	Shaft cover
10	1	Shift lever retainer
11	4	3/8"-16 x 3/4" Bolt
12	2	3/8"-16 x 1" Bolt
13	1	5/16"-24 x 1 1/8" Bolt
14	2	1/4"-20 x 1 1/4" Bolt
15	1	1/4"-20 x 1/4" Set screw
16	6	3/8" lock washer
17	3	1/4"-20 nut
18	2	5/16"-24 Acorn nut
19	4	Bushing
20	4	5/16"-24 Hex nut
21	1	5/16"-24 x 3/4" bolt
22	1	Clevis pin
23	1	Cotter pin
24	1	1/2" Flat washer
25	1	1/2" Lock washer
26	1	1/2"-20 Acorn nut
27	1	Brake rod
28	1	Brake pedal
30	1	Foot peg mount (long)
31	1	Main bracket brake
32	1	Brake rod clevis
35	1	5/16"-24 Self lock nut
36	1	Zerk fitting
37	1	1/4" flat washer
38	1	Short clevis

Left side

1. Remove left side foot peg and bracket.
2. Remove shift lever (3) and shift rod (7) with forward rod end and install shift lever retainer (10) so that old shift arm is held down and out of the way. Then install shaft cover (9) with set screw (15).
3. Remove left side highway foot peg and bracket.
4. Insert two bushings (19) in main shifter bracket (1) and install shift lever and shaft (2) then mount bracket assembly using two bolts (11) and two lock washers (16).
5. If motorcycle is early 1986 or older use shift rod (7) with two right hand threads. If motorcycle is late 1986 or newer use shift rod (8) with one left hand and one right hand thread. Replace O.E.M shift rod with correct rod as listed above. Use jam nuts (20). Install forward shift rod end into new shift lever and shaft (2) using acorn nut (18). Mount new foot lever (3) using bolt (13) and nut (35). Install O-ring shifter peg (4).
6. Secure short foot peg mount (5) to main bracket (1) using bolt and lock washer (16). Mount foot peg (5) to short foot peg mount (5) using bolt (14) and nut 17.
7. Tighten adjusting nuts, and all nuts and bolts.