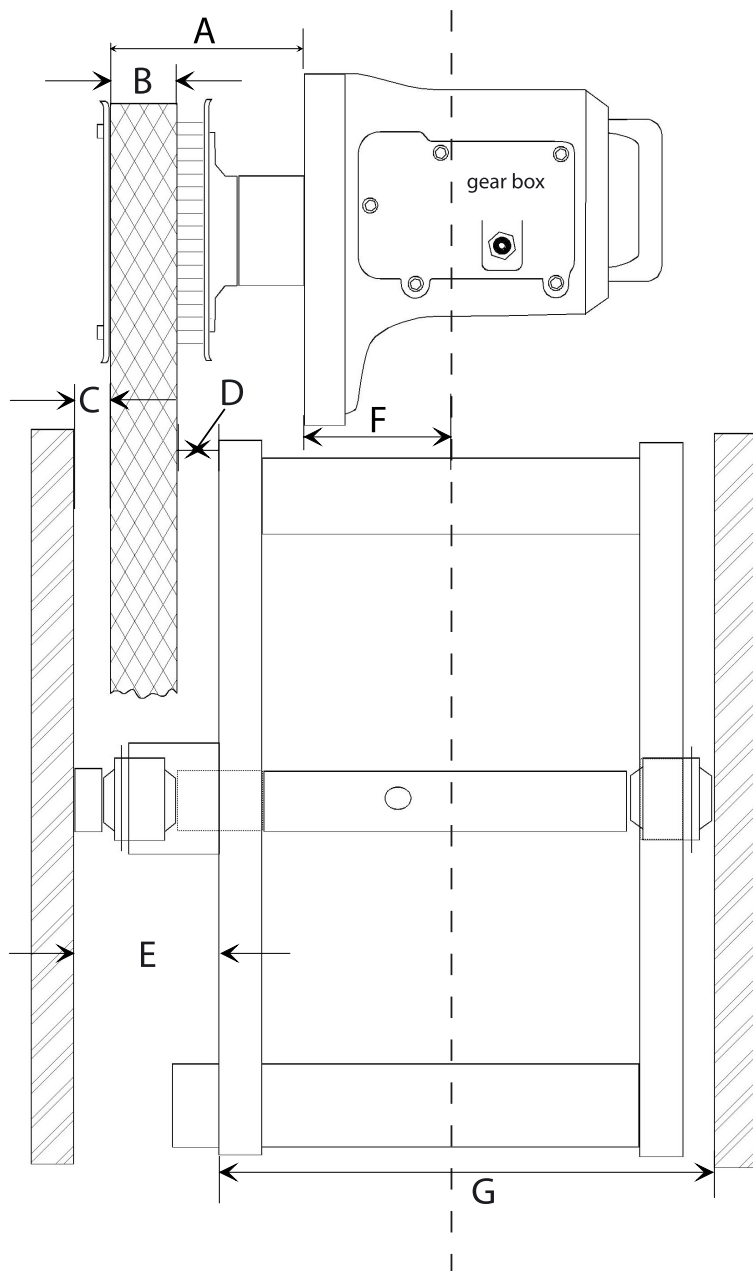


700942

Kit setup on 1991-1999 OEM frame



A = 92 mm

B = 29 mm
(belt)C = 21 mm
(gap)D = 3 mm
(gap)

E = 53 mm

F = 69 mm

G = 255 mm

Installation of these kits should be performed by an experienced mechanic, welding should be done by a craftsman or certified welder. It is strongly recommended to test-fit all parts prior to paint or chrome plate jobs.

Note: This kit must be used with a 1.125" wide 135 tooth final belt (ZPN 238689). When installing this kit on a 1991 thru 1993 model a late style countershaft 5th gear (ZPN 237074) must be ordered separately.

Remove rear wheel, fender, swingarm etc. according to the workshop manual. Install the primary offset kit as indicated on the drawing inside that kit.

- 1.) Grind half way through the outside of the left frame side plate
- 2.) Bolt the new frame side plate to the outside of that plate using 4 bolts and the supplied swing arm pivot. (sketch 2), tighten bolts, making sure that the swing arm pivot can still be turned with your finger tips.
- 3.) Weld the new side plate to the outside of the frame

- 4.) Cut out the original side plate from the inside of the frame, weld the new side plate to the inside of the frame.

- Remove the swing arm pivot.
- Remove swing arm pivot bearings from the original swingarm (or use new ones) and install into the new swingarm.
- Install swingarm in frame. The 10 mm thick spacer is fitted between the new frame side plate and the swingarm. The supplied pivot spacer bushing replaces the OEM part. Use with stock pivot bolts.

Kit contents:

238763	Stainless swing arm splash guard
700925	45 mm primary offset kit
700939	Rear wheel axle
700994	Swing arm pivot spacer
S700936	Swing arm pivot
S700941	Swing arm
S700942	Rear brake anchor
S700944	Frame side plate

