



Power Vision

GETTING STARTED GUIDE



Parts List

- 1 Power Vision Unit
- 1 J1850 Cable
- 1 USB Cable
- 1 Software CD
- 1 Getting Started Guide



!!!---WARNING---!!!
FOR RACING VEHICLE USE ONLY

Note: This product is not for use on roads or vehicles subject to emission control requirements and is not legal for use or installation on motor vehicles operated on public highways in the State of California or other States where similar emission and decibel regulation laws may apply. The user shall determine suitability of the product for his or her use. The user shall assume all risk and liability in violation of regulations and any incurred financial obligations due to vehicle inspections or emissions tests.

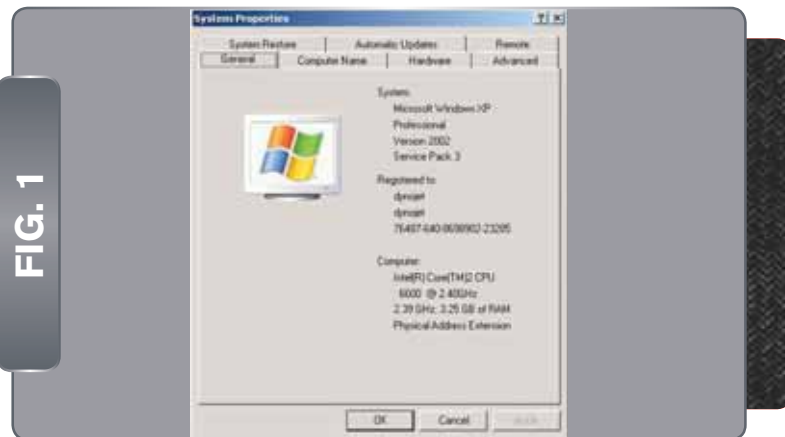


FIG. 1

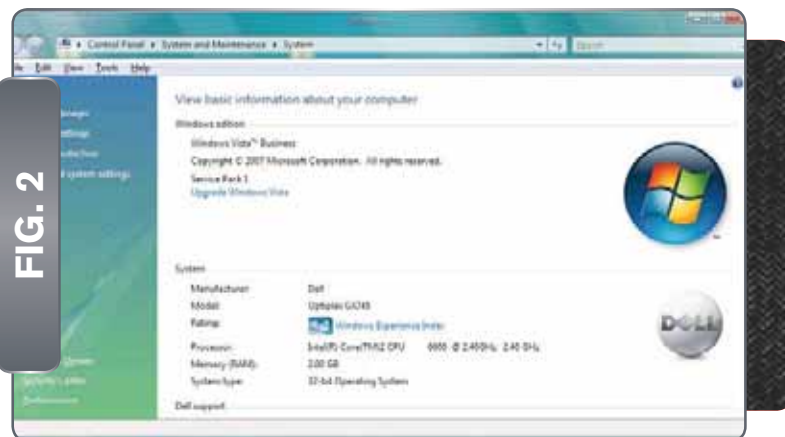


FIG. 2

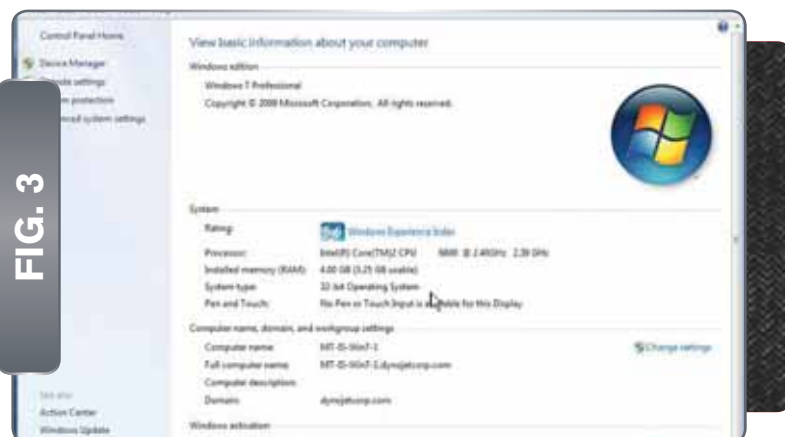


FIG. 3

Determining Your Operating System

Windows XP

- 1 Right-click **My Computer** and select **Properties**.
- 2 Click the **General** tab.

For a 32-bit version operating system, **Windows XP Professional Version <Year>** appears under System.

Use **PowerVisionSoftwareInstaller_x32_xxxxx.msi** for this installation.

For a 64-bit version operating system, **Windows XP Professional x64 Version <Year>** appears under system.

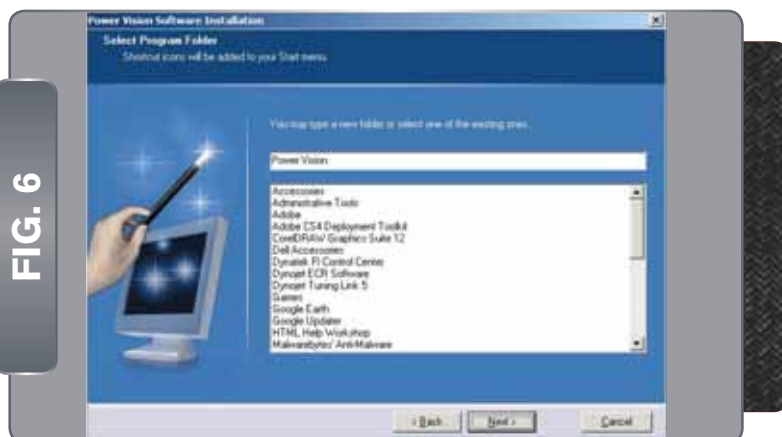
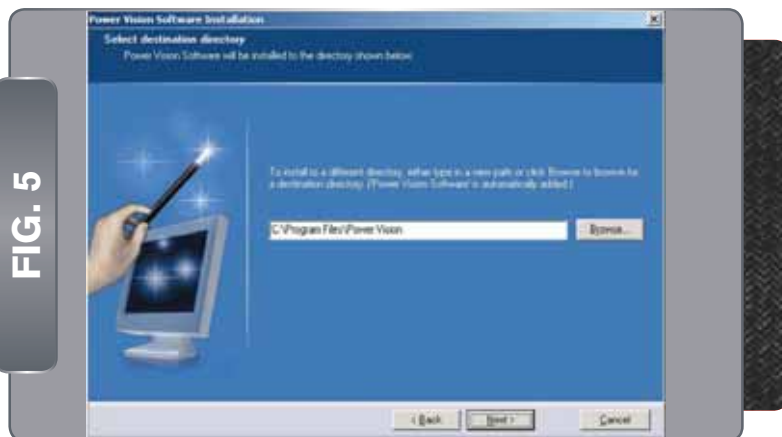
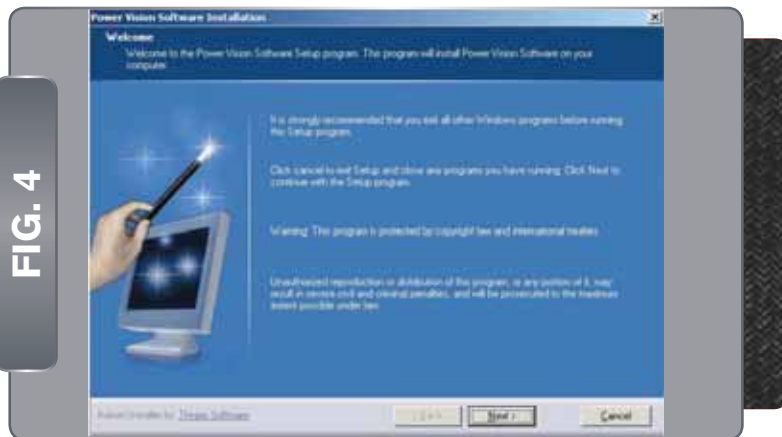
Use **PowerVisionSoftwareInstaller_x64_xxxxx.msi** for this installation.

Windows Vista

- 1 Right-click **My Computer** and select **Properties**.
- 2 Verify **System Type**.

Windows 7

- 1 Right-click **My Computer** and select **Properties**.
- 2 Verify **System Type**.



WinPV Software Installation

Use the following instructions to install the WinPV software on your computer.

It is strongly recommended that you exit all other Windows programs before running this install program.

- 1 Insert the WinPV CD in your CD-ROM drive.
- 2 Double-click **My Computer** and browse to your CD/DVD Drive.
- 3 Double-click **PowerVisionSoftwareInstaller_x32_xxxxx.msi** for 32-bit operating systems or **PowerVisionSoftwareInstaller_x64_xxxxx.msi** for 64-bit operating systems.

Or

Download the WinPV software from Dynojet.

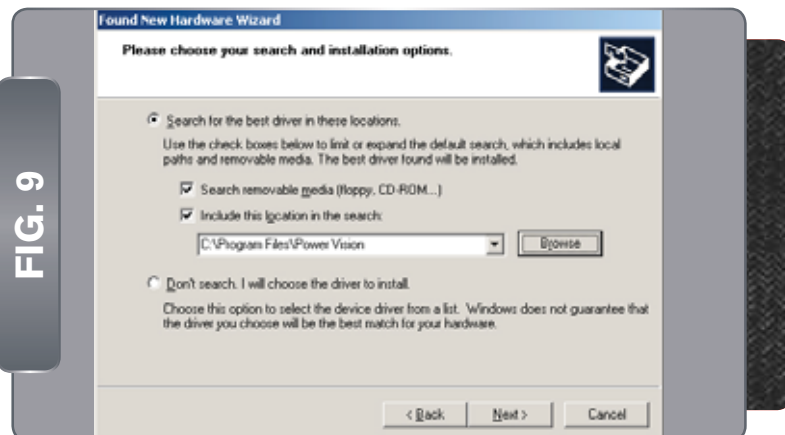
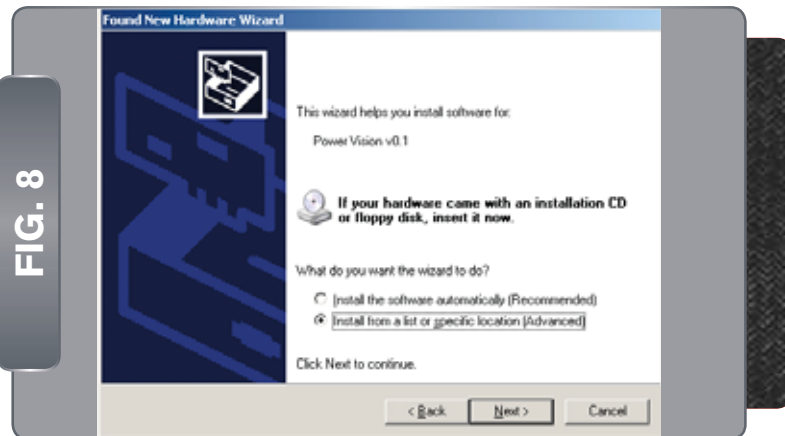
- 4 Read the Welcome window and click **Next** to continue.
- 5 Carefully read the WinPV license agreement, check the accept box, and click **Next** to continue.

To install WinPV, you must accept this agreement. If you do not, Setup will close.

- 6 Carefully read the information provided in the Readme window and click **Next** to continue.
- 7 Select a destination location for your WinPV software to be installed and click **Next** to continue.

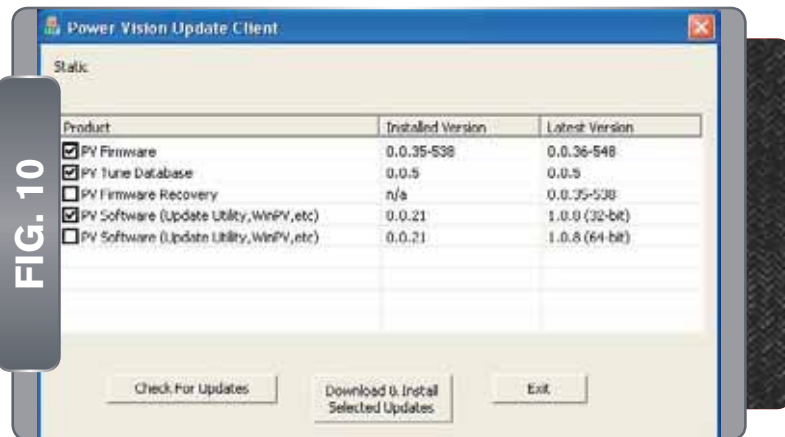
Dynojet recommends that you do not change the default destination folder.

- 8 Setup will automatically add program icons to the Start menu. You may type a new folder name or select one from the Existing Folders list. Click **Next** to continue.
- 9 Read the summary of your settings and click **Install**.
- 10 Click **Finish** to complete the installation.
- 11 Continue with the Power Vision Driver Installation.



Power Vision Driver Installation

- 1 Using the USB cable, connect the Dynojet Power Vision to your computer.
The Found New Hardware window will open.
- 2 Select **Yes, this time only** and click **Next**.
- 3 Select **Install from a list or specific location** and click **Next**.
- 4 Select **Search for the best driver in these locations**.
- 5 Verify the location points to your Power Vision folder in Program Files.
- 6 Click **Next**.
- 7 Click **Finish** to close the wizard.
- 8 Continue with Checking the WinPV Update Client.



Checking the WinPV Update Client

- 1 Using the USB cable, connect the Dynojet Power Vision to your computer.
- 2 Click **Start** on the Windows task bar and click **All Programs**.
- 3 Select **PowerVision >PV Update Client**.
- 4 Click **Check For Updates**. Select the following items to update:
 PV Firmware
 PV Tune Database
 PV Software (Update Utility, WinPV, etc.)
Note: Make sure you select the correct operating version. Refer to Determining Your Operating System on page 2.
- 5 Click **Download & Install Selected Updates**.
- 6 As the downloads are completed, click **OK**.
 The Welcome to the Power Vision Software Setup Wizard window will appear.
- 7 Click **Next** to continue.
- 8 Carefully read the Power Vision software license agreement, check the accept box, and click **Next** to continue.
 To install the Power Vision software, you must accept this agreement. If you do not, Setup will close.
 The Power Vision Software Feature window will appear.
- 9 Click **Next** to continue. Dynojet recommends you do not make any changes to this window.
 Setup is ready to install the Power Vision Software.
- 10 Click **Install** to begin installation.
- 11 The Power Vision Software update is now complete. Click **Finish** to exit the Setup Wizard.

For detailed software instructions and user information, refer to the Help included in the software.



Installing the Power Vision

- 1 Connect the Power Vision to the ECU's J1850 port.

- 2 Route the Power Vision cable away from any moving or hot parts.

Dynojet recommends using zip ties to secure the cable to existing non-moving components.

- 3 The Power Vision module may be mounted to the bike's handlebars using Techmount hardware.

Note: The Power Vision does not need to remain on the bike.

Figure 15 and Figure 16 are examples of the Power Vision module mounted to a 2009 Night Rod using the Techmount bracket.

FIG. 16



Figure 15 and Figure 16 are examples of the Power Vision module mounted to a 2009 Night Rod using the Techmount bracket.

FIG. 17



Saving Stock Calibration

Save Stock saves a copy of the stock calibration to the Power Vision module as a backup. Save Stock must be completed before any editing can be done to the parameters on the device or in the WinPV software.

Use the following steps to save the stock ECU calibration to the Power Vision module.

- 1 Touch **Vehicle Tools > Save Stock**.

FIG. 18



- 2 Touch **Yes**.
- 3 Touch **OK** when completed.



Loading a Stock File for Editing

The Power Vision accepts custom tune files created in WinPV and pre-loaded Dynojet maps installed in the Power Vision memory from Dynojet Research. To edit stock files, the Power Vision must be married to the ECU. Marrying the Power Vision to the ECU locks the Power Vision module to that ECU and prevents a single device from being used on multiple ECUs. You cannot unlock a Power Vision from a married ECU. Once the marriage process is complete, you can open the stored calibration in the WinPV software to edit all parameters or change Dynojet specific functions on the device.

Use the following steps to load a copy of the stock tune file for editing.

Note: Once this process is complete, the Power Vision module will be married to the ECU.



- 1 Touch **Program Vehicle >Load Tune.**
- 2 Touch **Load Copy of Stock.**
This will load a copy of the stock tune into the Tune Manager. Once loaded into a slot, it will be converted into a custom tune which can be edited and/or flashed to the ECU.
- 3 Touch **OK.**



- 5 Touch a slot to save the selected tune file.
Note: If there is any data in the selected slot, it will be overwritten.
- 6 Touch **OK.**
A copy of the stock tune will be saved.
- 7 Touch **OK.**



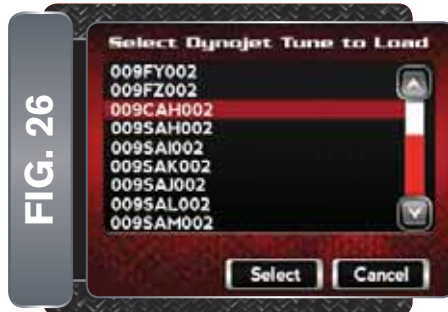
- The Power Vision and the bike are now married.
- 4 Touch **OK.**



- The tune is now ready.
- 8 Touch **Flash** to flash this tune to the ECU.
or
Touch **Edit** to edit this tune.
or
Touch **Exit** to exit the screen without any changes.



- 2 Select **Dynojet Tune**.
The Power Vision is now searching for compatible tunes for the connected ECU.
- 3 Touch **OK**.



- 4 Select a Dynojet Tune file to load.
- 5 Touch **Select**.



- 6 Verify the Tune information. If the Tune information is correct, touch **Continue**.

Loading a Custom or Dynojet Tune File

The Power Vision accepts custom tune files created in WinPV and pre-loaded Dynojet maps installed in the Power Vision memory from Dynojet Research.

Use the following steps to load a Dynojet map file to the ECU.

- 1 Touch **Program Vehicle >Load Tune**.



- 7 Touch a slot to save the selected tune file.

Note: If there is any data in the selected slot, it will be overwritten.

- 8 Touch **OK**.
A copy of the stock tune will be saved.

The tune is now ready.



- 9 Touch **Flash** to flash this tune to the ECU.

or

Touch **Edit** to edit this tune.

or

Touch **Exit** to exit the screen without any changes.

- 10 Touch **OK**.



- 11 Turn the ignition key off and wait ten seconds.

- 12 Turn the ignition key back on.

