

INDEX 05

IGNITION PARTS/IGNITION COILS	05-068
PLUG WIRE KITS	05-069
COIL COVERS & GENERATOR PARTS	05-070
SPARK PLUGS	05-071
STARTER MOTOR & PARTS	05-072
STARTER RELAYS & SOLENOIDS	05-072



JUST IN TIME TO SHOW THEM!

These parts were announced just too late to make it into this catalog but you definitely see them soon in our Dealer News and in the Online Catalog at <http://catalog.zodiac.nl>.

ACCEL STEALTH SUPER COIL FOR 2007-UP SPORTSTERS

- 747070** Black with machined accents
- 747071** Natural
- 747072** Solid Black



NEW



SAMWEL'S V-TRONIC ELECTRONIC IGNITION FOR 45CI, KNUCKLEHEAD AND PANHEAD

This easy to install electronic ignition provides better starting, accurate timing from idle to high RPM, has no moving points and consequently requires no maintenance. It is investment protected and works on both 6 Volt and 12 Volt systems. The greatest thing about them is that this state-of-the-art conversion is not visible from the outside. Ignition features a timing LED for an easy timing procedure. Works with coils with a primary resistance of more than 1 Ohm on 6 Volt, and more than 2 Ohm on 12 Volt systems. Fits inside the distributor housing and replaces the breaker points and condenser in all 1936 thru 1947 45CI Side Valves and 74 and 80CI Knucklehead and Panhead models. Available for use with manual advance, as well as one with full electronic advance.

745833 Electronic ignition with manual advance

745860 Electronic ignition with electronic advance



ECO-LINE HIGH PERFORMANCE SINGLE FIRE IGNITION COIL

This High Performance ignition coil is in fact two Single Fire ignition coils build into a small package. It is so small that it fits the stock coil bracket and stock coil cover in most applications. Coil has a 40,000 Volt output on each side and has a 3 Ohm primary resistance. Works with most aftermarket Single Fire ignitions with electronic advance on single cam Big Twins and Sportsters thru 2003.

748131 Eco-Line Single Fire coil, black

748146 **NEW** Eco-Line Single Fire coil, chrome

NEW



SAMWEL IGNITION COILS FOR 45CI MODELS

Exact replicas of the so-called 6 Volt spark coil and spark plug cables as found on all 45CI side valve engines from 1930 thru 1955 including Servi-Car. The matching U-bolt must be ordered separately.

745834 Spark coil with cables, black (OEM 31602-30)

745835 Spark coil with cables, chrome (OEM 31602-30)

745836 U-bolt with nuts, cad plated (OEM 31735-29)

745837 U-bolt with nuts, chrome plated (OEM 31735-29)

745838 U-bolt with nuts, black parkerized (OEM 31735-29)



VINTAGE STYLE SQUARE COIL

Genuine Zodiac replicas from the stock spark coil as found on 1948 thru 1960 OHV Big Twins, but only where it concerns the outside. Internally these coils feature an oil filled jacket around the windings that won't become brittle or crack over the time. Coils come complete with bracket, plug wires and spark plug caps. Available in 6 and 12 Volt to fit many models from 1948 thru early 1982. Not compatible with 1978 and later electronic ignition. Chrome finish.

152102 6 Volt square coil (OEM 31604-48)

152104 12 Volt square coil



ACCEL 8.8 IGNITION WIRE SETS

Premium quality ACCEL 8.8mm ignition wire in universal kits, available for 2-plug applications for electronic or points & magneto ignitions. Wires are pre-terminated with either 90 degree or vari-angle heavy duty spark plug boots. Kits contain one 42" (107cm) wire. Cut to the desired length and install the brass terminals and coil boots according to the included instructions. The ultimate in performance and reliability for street and racing use.

Fits all Big Twin and Sportster with points or magneto ignition

231719 8.8 Universal fit 90 degree yellow plug wire kit only

Fits electronic ignition equipped Sportster thru 2006 and Big Twin thru 1999, except Twin Cam

233707 8.8 Universal fit 90 degree black plug wire kit only

300+ Race Wire, 150 ohms per foot for race-winning or maximum street performance.

Fits electronic ignition equipped Sportster thru 2006 and Big Twin thru 1999, except Twin Cam

234528 8.8 Universal fit 90 degree black plug wire kit only

234529 8.8 Universal fit variable angle black plug wire kit only



SUMAX THUNDERVOLT HIGH PERFORMANCE PLUG WIRE KITS

Sumax claims that these are the only plug wires that prevent your plugs to carbon up because of their superior ability to fire unspent gases. With Thundervolt wires your plugs are being cleaned when your bike idles. Consequently your bike will start and run better. The Sumax ferrite spiral wound core with a blend of copper/nickel alloy is bonded by a conductive acrylic cover and feature "Pro" spark plug boots with a vibration proof double spring locking spark plug terminals and are available in black, red and blue in 8.2mm (21/64") diameter, as well as black extra-beefy 10.44mm (27/64") diameter.

Fits 2014 to present XG500 & XG750 Street

Includes two plug wires with 180 degree plug boots and 180 degree coil boots

- | | | |
|---------------|------------|--------|
| 8.2mm | | |
| 752458 | NEW | Black |
| 752459 | NEW | Red |
| 752460 | NEW | Purple |
| 752461 | NEW | Yellow |
| 752462 | NEW | Blue |
| 752463 | NEW | Orange |

Fits 2004 thru 2006 Sportster models, except XL 1200 S 4-plug models

Includes two 21" (53cm) plug wires with 180 degree plug boots and 180 degree coil boots

- | | | |
|---------------|---------------|-------|
| 8.2mm | 10.44mm | |
| 702218 | 702223 | Black |
| 702219 | - | Red |
| 702220 | - | Blue |

Fits 2007 to present Sportster XL models

Includes one 18" (46cm) with 180 degree plug boot and 180 degree coil boot and one 9" (23cm) long plug wire with 180 degree plug boot and 90 degree coil boot

- | | | |
|---------------|---------------|-------|
| 8.2mm | 10.44mm | |
| 702215 | 702222 | Black |
| 702216 | - | Red |
| 702217 | - | Blue |

Fits 1999 to present Dyna's and 2000 to present Softails, except 2008 to thru 2011 Rocker and 2013 to present Breakout

Includes one 18" (46cm) and one 7" (18cm) long plug wire, 90 degree plug boots & 180 degree coil boots

- | | | |
|---------------|---------------|-------|
| 8.2mm | 10.44mm | |
| 702212 | 702221 | Black |
| 702213 | - | Red |
| 702214 | - | Blue |

Fits 2008 thru 2011 FXCW and FXCW Rocker, 2013 to present FXSB Breakout and all 1999 to present Twin Cam models with the coil relocated to the upper motor mount

Includes two 8" (20cm) long plug wires, 135 degree plug boots & 90 degree coil boots

- | | | |
|---------------|--|-------|
| 8.2mm | | |
| 702224 | | Black |
| 702225 | | Red |

Fits 1999 thru 2008 carbureted FLH & FLT series models

Includes one 18" (46cm) with 180 degree plug boot and 180 degree coil boot and one 9" (23cm) long plug wire with 180 degree plug boot and 90 degree coil boot.

- | | | |
|---------------|---------------|-------|
| 8.2mm | 10.44mm | |
| 702215 | 702222 | Black |
| 702216 | - | Red |
| 702217 | - | Blue |

Fits 1999 thru 2008 Fuel Injected FLH & FLT series models

Includes two 21" (53cm) plug wires with 180 degree plug boots and 180 degree coil boots.

- | | | |
|---------------|---------------|-------|
| 8.2mm | 10.44mm | |
| 702218 | 702223 | Black |
| 702219 | - | Red |
| 702220 | - | Blue |

Fits 2009 to present Fuel injected FLH & FLT series models

Includes one 36" (91cm) and one 18" (45cm) plug wire with 135 degree plug boots and 180 degree coil boots.

- | | | |
|---------------|---------------|-------|
| 8.2mm | 10.44mm | |
| 702226 | 702228 | Black |
| 702227 | - | Red |



NEW



SUMAX PRO WIRE KITS FOR XG 500 & 750 STREET

Ready to install plug wire kits with a 350 ohms/foot core and 8mm diameter. Fits 2014 to present XG 500 and XG 750 Street models. Sold in sets of 2.

- 752450** Black
- 752451** Red
- 752452** Purple
- 752453** Yellow
- 752454** Blue
- 752455** Pink
- 752456** Orange
- 752457** Green



Newton



Hercules

REBUFFINI COIL COVERS FOR SOFTAIL

These coil cover kits allow you to install the ignition coil "FXR-style" between the cylinders. Kits include a billet coil cover and a billet top motor mount in polished, black anodized or chrome, as well as the required mounting hardware. Kits for 1986 thru 1999 Softail can be used with a stock or stock-style coils, S&S Single Fire coil or Accel Super coil. Installation with a stock gas tank requires relocation of the petcock. Kits for Twin Cam Softail take the stock or stock-style coil and does not interfere with the petcock. Plug wires and spark plugs are shown for illustration purposes only, a set of FXR or FXCW-style plug wires must be ordered separately. Installation of Hercules-style covers on FXCW and FXCWC Rocker models works with the stock spark plug wires but requires the repositioning of the ignition switch and the purchase of a coil re-location bracket ZPN746675. Available in Newton and Hercules style, a perfect match with Rebuffini's air cleaners found in Chapter 6.

Newton style coil covers

<i>Polished</i>	<i>Black</i>	<i>Chrome</i>	
746685	746686	746687	1986-1999 Softail
746688	746689	746690	Fits 2000 thru 2003 carburetor equipped Softail
746691	746692	746693	Fits 2003 to present Fuel Injected Softail
-	747705 NEW	-	Fits 2008 thru 2011 Rocker and 2013 to present Breakout

Hercules style coil covers

<i>Polished</i>	<i>Black</i>	<i>Chrome</i>	
746676	746677	746678	1986-1999 Softail
746679	746680	746681	Fits 2000 thru 2003 carburetor equipped Softail
746682	746683	746684	Fits 2003 to present Fuel Injected Softail and Rocker

746675 Coil re-location bracket for 2008-2011 FXCW and FXCWC Rocker

NEW



SAMWEL REBUILD GENERATORS FOR VINTAGE MODELS

These completely rebuild "32E" style generators fit all 1932 thru 1964 Harley-Davidson V-Twins. Available in 6 Volt like stock, but also in 12 Volt. The 12 Volt version looks exactly the same as the stock generator, so great for your restoration project.

- 745830** Rebuild generator, 6 Volt (OEM 1501-30/29975-30)
- 745831** Rebuild generator, 12 Volt
- 745832** Rebuild kit for 32E generator





NEW

CHAMPION SPARK PLUGS

These Champion spark plugs are the correct heat range for Harley-Davidson and Buell engines, as well as all S&S engines.

Fits 165cc Topper & AH, and 175cc Bobcat, BTH, Pacer, Scat, SS and SX

749675 Champion RH8C, each

Fits all low compression 1927 thru 1952 45CI, 1927 thru 1947 61CI, 1927 thru 1948 74CI, 1927 thru 1947 80CI, and 1953 thru 1954 Servi-Car

749670 Champion D-14, each

234308 Champion D-14, 6-pack (OEM 32302-09)

Fits all high compression 1927 thru 1952 45CI, 1927 thru 1947 61CI, 1927 thru 1948 74CI, 1927 thru 1947 80CI, and 1953 thru 1954 Servi-Car

234307 Champion D-16, 6-pack (OEM 32302-09)

Fits 1957 thru 1971 K, KH and Sportster and 1977 thru 1979 XLCR Sportster

749671 Champion H8C, each

Fits 1980 thru 1985 Sportster 1000

749676 Champion RL82YC, each

Fits 1983 thru 1985 XR 1000

749679 Champion RN7YC, each

Fits 1948 thru 1952 E and EL Panhead and 1948 thru 1974 Shovelhead

749672 Champion J12YC, each

Fits 1975 thru 1981 Shovelhead, Evolution Big Twin, Ironhead Sportster and S&S SH Series, P-Series, KN-Series, 3 5/8" and 4" bore engines

749677 Champion RN12YC, each (OEM 32362-04)

760067 Champion RN12YC, 2-pack (OEM 32362-04)

Fits 1982 thru 1983 Shovelhead

749678 Champion RN13LYC, each

Fits Buell (except 1125R), Evolution Sportster (except XR 1200), Twin Cam, S&S X-Wedge and S&S 4 1/8" bore engines

749674 Champion RA8HC, each (OEM 32342-04)

760066 Champion RA8HC, 2-pack (OEM 32342-04)

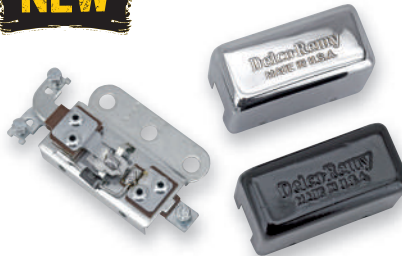
Fits 2002 to present V-Rod

749680 Champion RAX94YC, each

Fits 2008 thru 2012 XR 1200 and XR 1200 X

749673 Champion RA6HC, each (OEM 27794-08)

NEW



IDIOT LIGHT RELAY & COVER FOR 45CI AND EARLY BIG TWIN

Solid state version to replace the very unreliable mechanical type relay as found on all 1938 thru 1954 45CI models and Big Twins. An exact copy of the genuine relay cover is available in your choice of black and chrome.

745953 Solid state "Idiot Light" relay (OEM 74750-38)

745956 Relay cover, black (OEM 74755-38)

745957 Relay cover, chrome (OEM 74755-38)



NEW

ELECTRONIC VOLTAGE REGULATOR & IDIOT LIGHT RELAY COMBO

The mechanical type relay as found on all 1938 thru 1954 45CI and Big Twins has a number of disadvantages. It was proven unreliable and there was no way the output voltage was regulated, so not very easy on the battery. This solid state full electronic item is very reliable and controls the voltage to your battery. Also available in a version for models that have been converted to a 12 Volt system. It fits under the stock relay cover, which we also have available in your choice of black and chrome.

745954 For 6 volt models (OEM 74750-38)

745955 For models converted to 12 Volt

745956 Relay cover, black (OEM 74755-38)

745957 Relay cover, chrome (OEM 74755-38)

NEW



ALTERNATOR STATORS FOR SPORTSTER

Stock replacement stators from Eastern Motorcycle Parts in the U.S.A.

151131 Fits 1984 thru 1990 Sportster models, unmolded, plug style E (OEM 29967-84A)

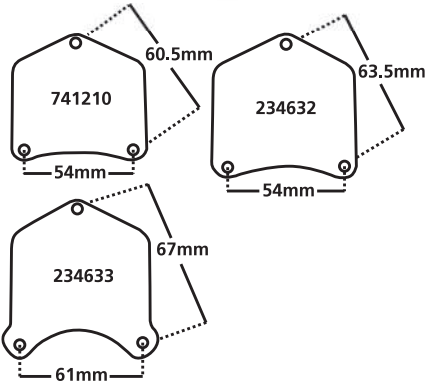
237471 Fits 1991 thru 2006 Sportster models, unmolded, plug style E (OEM 29967-89A)

05

ELECTRICAL & IGNITION



NEW



PUSHBUTTON STARTER KIT

Bolts straight onto your starter motor. Eliminates the need of the handlebar starter button, handlebar wiring and starter relay. Just push the button to engage your starter. Can also be used as an emergency starter button when your battery is a bit low. CNC machined from solid billet aluminum and has a chrome finish. Comes complete with allen head mounting screws.

- 741210** Pushbutton starter kit, fits most 1989 to present Big Twin stock style 1.2 and 1.4 kW starter motors
- 234632** Pushbutton starter kit, fits 1.6 and 1.8 kW starter motors
- 234633** Pushbutton starter kit, fits 1.0, 2.0 and 2.4 kW starter motors

NEW



REPLACEMENT BEARINGS FOR STARTER CLUTCH

These sealed bearings will fit the starter clutches on 1991 thru 1999 Evolution Big Twins, 1999 thru 2006 Twin Cams (except 2006 Dyna), as well as 1981 to present Sportsters. Use one large bearing and one small for Big Twin models, 1991 to present XL1200 and 1994 to present XL883, or two large bearings for 1981 thru 1990 XL1200 and 1981 thru 1994 XL 883. Also fits our improved starter clutch gear ZPN 743221. Sold each.

- 701807** Large bearing
- 701808** Small bearing

NEW



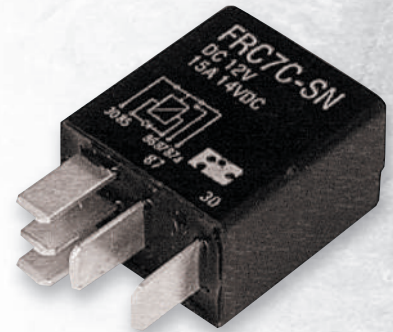
JAMES SOLENOID BLOCK OFF PLATE FOR SHOVELHEAD

Rubberized plate to block off the hole for the solenoid in the inner primary on all 1965 thru 1984 Shovelhead Big Twins.

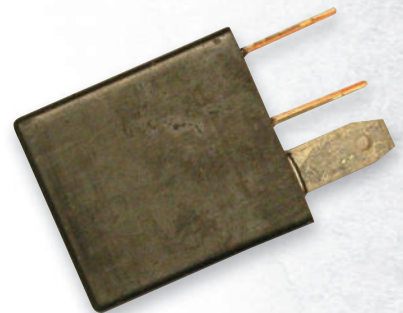
- 760653** Solenoid block off plate

MICRO STARTER RELAYS

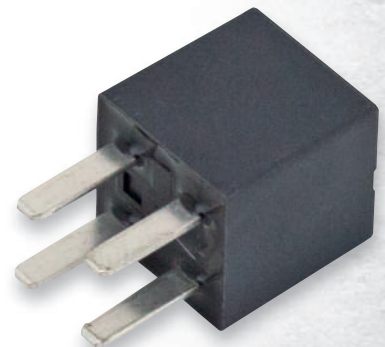
Standard Motor Products "Micro" starter relays meet or exceed all factory standards.



- 721677** Fits 2000 thru 2006 Touring & 2000 to present Dyna and Softail. Can also be used on 1980 thru 1999 models if 2000 and later connector is used. The small size, less than half as big as the Bosch type relay, also makes it ideal for Custom projects (OEM 31522-00)



- 742018** Fits 2004 thru 2009 Sportster (OEM 31601-04)



- 760445** **NEW** Fits 2007 to present Touring and 2010 to present Sportster (OEM 34579-04 & 31586-07)

05

ELECTRICAL & IGNITION

