

INDEX 24

DIAGNOSTIC, TUNING & FUEL INJECTION TOOLS	24-064
UNIVERSAL TOOLS/ELECTRICAL SYSTEM TOOLS	24-065
TOP END -, VALVE TRAIN - & LOWER END TOOLS	24-066
PRIMARY & CLUTCH TOOLS	24-067
TRANSMISSION TOOLS	24-068
FINAL DRIVE TOOLS	24-069
WHEEL & TIRE TOOLS	24-070
BRAKE TOOLS	24-071
FRAME & SUSPENSION TOOLS	24-072
CLEANERS & CHEMICALS	24-072

JUST IN TIME TO SHOW THEM!

These parts were announced just too late to make it into this catalog but you definitely see them soon in our Dealer News and in the Online Catalog at <http://catalog.zodiac.nl>.



Sonic Equipment Tools

45650 Tank and/or fender protector 90x50cm



Sonic Equipment Tools

745648 8 Piece Compression tester kit



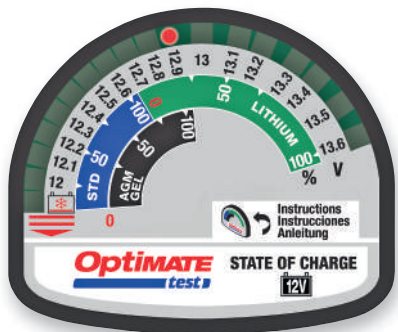
Sonic Equipment Tools

745649 Electric brake fluid tester



Sonic Equipment Tools

745651 Adjustable 22mm O2 sensor wrench

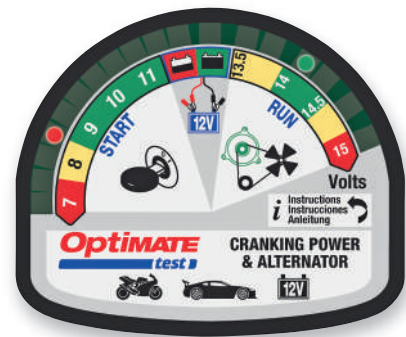


NEW

OPTIMATE BATTERY AND ALTERNATOR TESTERS

These small and handy testers will help you make a diagnosis of your electrical system in a snap. Comes supplied with battery clips for use on the battery terminals, or use your already existing Optimate quick-connect for easy access. They work with all 12 Volt lead-acid, AGM/Gel and LiFePO4 (LFP) Lithium batteries in motorcycles and cars.

Battery state of charge tester 743775 Indicates state of charge in Volts and percentage for all types of batteries



NEW

Cranking power & alternator tester

743774 Indicates state of battery charge in Volts, records lowest start voltage and displays this for 20 seconds. Also verifies vehicle system charging voltage is in range for lead-acid batteries and not overcharging LiFePO4 Lithium batteries



NEW

JIMS DAMAGE CONTROL ENGINE FAILURE DETECTION SYSTEM

Jims Damage Control engine failure detection system provides an early warning of catastrophic engine failure by detecting ferrous debris within an engine's oiling system. Using state of the art technology, the special drain plug monitors ferrous particles in the motor oil. When the amount of particles in the oil reaches a level that could indicate impending trouble, the LED warning light illuminates in the handlebar clamp, alerting you to investigate the trouble. This early warning can potentially save you a load in repair costs. The system includes a complete wiring harness, drain plug sensor, and your choice of black anodize or chrome handlebar LED & clamp housing for 1" handlebars. The Jims Damage Control kit installs easily with no cutting or splicing on all 1993 to present Touring and 1991 to present Dyna Glide models. Kits for use on 1 1/4" diameter handlebars are available upon Special Order.

- 753603** Kit with black handlebar switch housing
- 753604** Kit with chrome handlebar switch housing



NEW

FUEL TOOL FUEL PRESSURE GAUGE

Fuel Tools fuel pressure gauge utilizes quick disconnects so that checking fuel pressure is a breeze. No more chasing fuel system problems. Often times the cause of a poor performing motorcycle is a problem with the fuel system. This gauge will allow you to quickly diagnose any issues with your fuel system, such as loss of power, poor fuel economy, hesitation and stalling. Works with all 2001 to present Delphi fuel injected Harleys. Features solid nickel plated brass adapter and release valve, steel housing 100PSI gauge, Viton O-rings, O-ring lubricant and nylon storage pouch. Also available as a Premium Kit that includes a 16" (41cm) flexible fuel hose and swivel gauge with felt covered magnetic attachments, allowing the user to use the gauge under both static and load conditions, no matter what side of the bike you are working on. A must for every professional workshop.

- 747364** Basic Fuel Tool Fuel Pressure gauge



NEW

- 747367** Premium Fuel Tool Fuel Pressure gauge

CHEMICALS & TOOLS

24



NEW



JIMS ROLLING BUDDY

Rubber mounted Harley-Davidson V-Twins use the engine as a structural part of the chassis. When the engine is removed, it becomes impossible to roll the motorcycle. This can incapacitate a lift or, at the very least, tie up floor space. Jims Rolling Buddy plates are designed to take the place of the engine and literally bolt the chassis back together and will allow you to roll the bike again, making your workshop more efficient. As with all Jims USA tools, these are tools for professional use, but are great for do-it-yourself use too.

- 753600** Use on 1984 thru 1998 Touring, FXR and Dyna
- 753601** Use on all 1999 thru 2006 Touring and 1999 thru 2005 Dyna
- 753602** Use on all 2007 to present Touring and 2006 to present Dyna

NEW



CRUZTOOLS SPEEDKIT FOR HARLEY

The CruzTools Speedkit tool kit series provides a new standard for capability and compactness. The Speedkit was developed to cover the most common needs of all Harley-Davidson models except the V-Rod, with wrenches, nut drivers, star bits, hex wrenches, 5-in-1 screwdriver, pliers, 2-in-1 spark plug socket, and tire pressure gauge. Everything fits into the durable pouch that measures only 7"x2"x2" (17.5x5x5cm), with the same dependability you have come to expect from CruzTools.

- 740585** CruzTools Speedkit for Harley-Davidson

NEW



JIMS ONBOARD DIAGNOSTIC VOLTMETER

Like all modern motor vehicles, Harley-Davidson motorcycles are much more dependent upon their electrical charging systems. Electronic fuel injection systems with high pressure fuel pumps, audio, GPS Navigation and more powerful lights that are on whenever the motorcycle is operating, add significantly to electrical demands. Charging system failure can be more than an inconvenience, so it makes sense to take preventative measures. The Onboard Diagnostic Voltmeter attaches easily to the battery and can be quickly viewed to spot potential charging system and battery problems. Works on all 6 or 12 volt battery and charging systems in motorcycles and many other applications.

- 753624** Jims onboard diagnostic voltmeter

NEW



JIMS BATTERY LIFTER

Even sealed and gel cell batteries can leak harmful and corrosive chemicals that can cause damage to skin and clothing. This new Battery Lifter is modeled after the larger tools made for automotive batteries but is properly sized to fit a variety of motorcycle batteries. In particular, some Harley-Davidson models have an extremely tight fit in the compartment combined with a heavy battery, which makes for unusually difficult removal and installation. This is an accident waiting to happen! Dropping the battery can result in personal injury, and/or damage to the motorcycle, as well as the battery itself. Our concern for safety goes beyond just riding the motorcycles.

- 753625** For all Harley-Davidson models where lifting straight up is difficult to impossible

NEW



JIMS IGNITION SWITCH HOUSING ALIGNMENT TOOLS

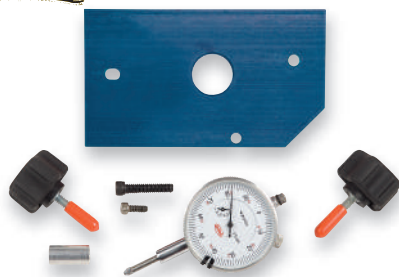
These Jims-USA tools will help to align the ignition switch housing and ignition switch knob to help extend the life of the ignition switch housing. Just insert the tool, torque de screws and remove the tool again.

- 751056** Works on all Touring models 2003 thru 2013 and all V-Rod models 2002 to present.
- 753616** Works on all Touring models 2014 to present

CRUZTOOLS®



NEW



JIMS FLYWHEEL RUNOUT INSPECTION GAUGE

Check flywheel runout of the pinion shaft while assembled in engine case. Also checks the amount of gear lash on aftermarket gear driven cams for Twin Cam engines. By using a JIMS tire rotator ZPN 753615 you can remove most all of the stress being applied to the flywheel by not rotating the engine with the electric starter motor. Kit contains instructions, indicator plate, required hardware and a 1" dial indicator. Works on 1970 thru 1984 Shovelhead, 1984 thru 1999 Evolution Big Twin and 1999 to present Twin Cam.

753612 Flywheel trueness inspection gauge

NEW



JIMS SPROCKET SHAFT BEARING INSTALLING TOOL

Designed to give the best control on the torque of bearing pack for checking bearing end play. Torque nut with JIMS tool ZPN 235848 for consistent professional results. The basic sprocket shaft tool works on all Big Twin engines from 1955 thru 1999 and 1999 thru 2005 Twin Cam. To use this tool on later models you will also need the ZPN 753619 upgrade kit.

235810 Basic sprocket shaft bearing installing tool

753619 **NEW** Upgrade kit to use ZPN 235810 on 2006 to present Dyna, 2007 to present Softail and 2007 to present Touring

235848 Main shaft sprocket locknut wrench (OEM 94660-37A)

NEW



JIMS PINION SHAFT BEARING AND RACE PULLER TOOL

This tool has been designed to remove pinion shaft inner bearing race on 1954 to present Sportster and air cooled Buell's. Comes complete with JIMS T-bar and hardware. If heat is needed to remove race see tool ZPN 751111 surface temperature indicator strips.

- Also removes the flywheel sprocket shaft inner bearing race on all 1955 thru 1999 Big Twin and 1999 to present Twin Cam.

- Also to remove press fit transmission gears and bearings from input and output shafts on all V-Rod models 2002-present.

753617 Jims bearing and race puller tool



JIMS CRANKSHAFT BEARING REMOVER AND INSTALLER FOR TWIN CAM

This quality tool is designed and made by Jims to remove and replace the crankcase bearings on Twin Cam engines. Precision made and piloted using Delrin, a non-marring material, to press bearing in and out straight with no damage to the case.

720483 For right side bearing in Twin Cam "A" 1999 thru 2002

750321 For left and right side bearing in Twin Cam "A" 2003 to present and left side bearing in Twin Cam B 2003 to present

NEW



JIMS SPROCKET SHAFT BEARING AND RACE PULLER TOOL

This tool has been designed to remove the flywheel sprocket shaft inner bearing race on all 1955 thru 1999 Big Twin and 1999 to present Twin Cam. Comes complete with JIMST-bar and hardware. If heat is needed to remove race see tool ZPN 751111 surface temperature indicator strips.

- Also removes pinion shaft inner bearing race on 1954 to present Sportster and air cooled Buell's.

- Also to remove press fit transmission gears and bearings from input and output shafts on all V-Rod models 2002-present.

753617 Jims bearing and race puller tool

NEW



JIMS ROCKER BOX ALIGNMENT SCREWS FOR TWIN CAM

Production tolerances on Twin Cam rocker covers can allow them to shift when being tightened. This can cause misalignment, which not only looks bad but can compromise the sealing surface. And especially in engines with high lift cams having the rocker covers relieved, misaligned covers can cause rocker interference unless extra material has been removed. For these reasons Jims developed these alignment screws, your guarantee that rocker covers are aligned correctly. Comprehensive instructions included.

753607 Jims Twin Cam rocker cover alignment screws



NEW



JIMS TAPPET POSITION HOLDING TOOL

Expert technicians know that keeping the same parts operating in their original position and direction is a good idea. This is especially true with the tappets in Harley-Davidson engines. Whenever the tappets are removed the Jims holding tool allows the tappets and anti-rotation pins to be safely and accurately stored for proper reinstallation. Tappet locations are clearly referenced on the tool, which also serves to protect the tappets from damage when removed from the engine.

753633 Works on all 1999 to present Twin Cam, 2000 to present Sportster and 2000 to present air cooled Buells



JIMS TIMKEN CASE BEARING CONVERSION TOOL FOR TWIN CAM

This tool is a must for the big cubic inch late model Twin Cam engine builder. It may also be used to replace bearing for stock 88" or 96" engines. Utilizing the special JIMS precision insert, it is designed to easily and accurately convert the left side crankshaft roller bearing (OEM 24604-00D) to the more durable Timken bearing (OEM 9028). This insert is manufactured from aerospace quality steel that is several times stronger than the aluminum case material the standard bearing rides in. This job can be performed with normal hand tools, a hand drill and a 2 ton press.

Includes:

- A steel bearing insert held to under .0002" total indicator reading.
- A press plate that will hold the bearing insert in line with the case bearing bore at the time it is being pressed into case
- All the necessary drill bits to drill oil feed and return holes, hardware, and detailed instructions

Timken style crankcase bearing must be ordered separately.

751050 Jims Conversion Tool for use on Twin Cam engines 2003 to present

231501 Crankcase bearing L/H, Timken style (OEM 9028)

760557 **NEW** S&S crankcase bearing L/H, Timken style (OEM 9028)

NEW



JIMS INNER PRIMARY COVER BEARING AND SEAL TOOL

Designed to safely remove and install the inner primary bearing without any damage to the new bearing. This is done by pushing on the outer perimeter of the bearing. Also removes and installs inner primary seal. Those who already have the ZPN 751061 tool can order the two drivers for the 2006-up models separately.

751061 For use on Softail late 1984 thru 2006, FXR 1985 thru 1994, Dyna 1991 thru 2005 and Touring 1985 thru 2006

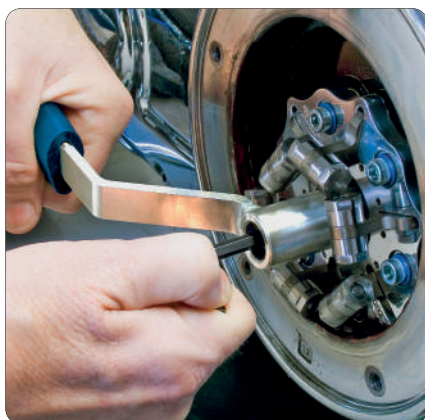
753620 For use on Softail late 1984 to present, FXR 1985 thru 1994, Dyna 1991 to present and Touring 1985 to present

753634 Driver #4 for 2006 thru 2007 Dyna, 2007 Softail and 2007 Touring

753635 Driver #5 for 2008 to present Twin Cam



NEW



JIMS ULTIMATE CLUTCH ADJUSTING TOOL

Jims came up with this tool as a real time saver. It allows the technician to quickly and accurately tighten the clutch adjusting screw jam nut without having the screw change position on 1985 thru 1999 Big Twin and 1999 to present Twin Cam. No more guessing or making multiple attempts to lock the nut and adjuster screw in the proper place. Tool includes the proper hex key "Allen" wrench for Harley-Davidson motorcycles which conveniently stores in the tool handle.

- 753626** Jims Ultimate Clutch Adjusting Tool
- 753626** Jims Ultimate Clutch Adjusting Tool

NEW



JIMS CRUISE DRIVE VISE STAND

Jims has developed this stand to assist the assembly of the OEM 6-speed transmission gears and shafts. No more fumbling with parts on the bench or clamping in a vise with soft jaws. This tool holds the shafts in perfect alignment while protecting them from damage.

- 753622** Works on 2006 to present Dyna and 2007 to present Touring and Softail



NEW

JIMS TRANSMISSION MAIN DRIVE GEAR SEAL INSTALLER

Use to install the transmission main drive seal to the proper depth with the transmission assembled. Can also be used to protect the main drive gear inner needle bearings when installing the transmission in the frame.

- 753605** Works in all stock and aftermarket Big Twin 5 speed transmissions, as well as aftermarket 6-speeds for 1980 thru 2006 models
- 753618** Works in the stock 6-speed transmission in 2006 to present Dyna, 2007 to present Touring and 2007 to present Softail

NEW



JIMS 6 SPEED TRANSMISSION MAIN DRIVE GEAR SEAL INSTALLER

Installing the transmission main drive seal in the 6-speed transmission in 2006 to present Dyna, 2007 to present Softail and Touring comes very accurate as any pressure on the main drive gear bearing may result in a damaged bearing. This Jims tool installs the seal the correct way and in exactly the correct depth.

- 753613** Jims 6-speed transmission main drive seal installer





NEW



JIMS TRANSMISSION MAIN DRIVE GEAR SEAL INSTALLER

This Jims tool helps to install and protect the seal with correct alignment and in exactly the correct depth on OEM and aftermarket 5-speed transmissions, as well as in aftermarket 6-speeds.

753623 Jims transmission main drive seal installer

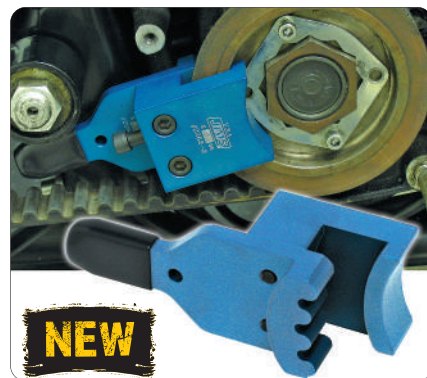


NEW

JIMS COUNTERSHAFT BEARING REMOVER & INSTALLER

This Jims tool will install the closed end countershaft bearing on all Big Twin and Twin Cam 5-speed, aftermarket 6-speed and 2006 and later Twin Cam "Cruise Drive" 6-speed transmissions without using a press or tapping it in with the transmission counter shaft. A precision hand tool that makes installation of the bearing square and at the correct depth. Comes complete with comprehensive instructions.

753608 Jims countershaft bearing tool



NEW

JIMS PULLEY LOCK TOOL FOR SPORTSTER & BUELL

Another Jims quality tool. Use this one to lock the transmission final drive sprocket when removing and installing the sprocket nut. Works on all 1991 to present Sportster and all 1994 thru 2002 Buell with 28 or 29 tooth sprocket.

753606 Jims Sportster pulley lock tool



NEW

JIMS FINAL DRIVE SPROCKET LOCKNUT WRENCH

Heavy-Duty thick wall tube tool from Jims-USA. Extra long two piece design, inner collar will retain wrench to nut for safer service work. Used to install or remove the 1 7/8" hex nut that secures the final drive sprocket or pulley on the transmission main shaft on all Big Twins from 1936 thru 2006, except 2006 Dyna. Use with 1/2" drive ratchet.

235848 Main shaft sprocket locknut wrench (OEM 94660-37A)



NEW

JIMS TRANSMISSION SHIFTER SHAFT SEAL INSTALLER

These tools align, center and install the shifter shaft oil seal at the correct depth in the transmission housing.

- A. 753610** Use in all OEM and aftermarket 5-speed transmissions and aftermarket 6-speeds in 1980 thru 2006 Big Twin and Twin Cam, except 2006 Dyna
- B. 753611** Use on 2006 to present Dyna, 2007 to present Softail and 2007 to present Touring



NEW

JIMS TRANSMISSION GEAR AND BEARING PULLER TOOL FOR V-ROD

This tool has been designed to remove the press fit transmission gears and bearings from input and output shafts on all V-Rod models 2002-present. Comes complete with JIMS T-bar and hardware. If heat is needed to remove race see tool ZPN 751111 surface temperature indicator strips.

- Also removes the flywheel sprocket shaft inner bearing race on all 1955 thru 1999 Big Twin and 1999 to present Twin Cam.
- Also to remove pinion shaft inner bearing race on 1954 to present Sportster and air cooled Buell's.

753617 Jims bearing and race puller tool



SPROCKET NUT WRENCH

Genuine Zodiac tool, used to install or remove the 1 7/8" hex nut that secures the final drive sprocket or pulley on the transmission main shaft on all Big Twins from 1936 thru 2006, except 2006 Dyna. Zinc plated finish (OEM 94660-37).

131141 Transmission sprocket nut wrench



NEW



KELLERMANN CHAIN TOOL

This chain tool will allow easy removal of a worn chain and precise assembly of a new chain with rivet-style link. No need to remove the swing arm when replacing the drive chain. The tool works with all 520, 525 and 530-series and 630-series chains from multiple brands, including our Tsubaki and Pingel chains. For 420, 425 and 428-series full rivet chains you will need the separately available chain tool extension set. The Kellermann chain tool works with a 3/4" (19mm) ring- or socket wrench.

742070 Kellermann chain tool

742071 Chain tool extension set

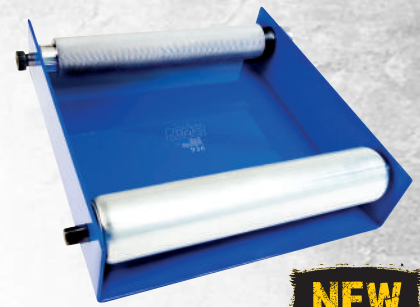


JIMS WHEEL BEARING REMOVER AND INSTALLER KIT FOR 2000 TO PRESENT MODELS

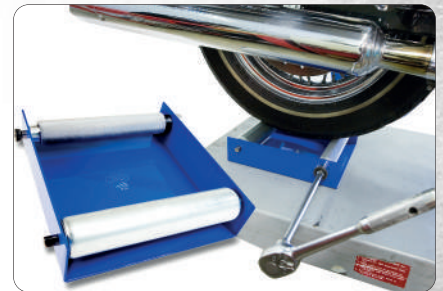
Use to remove and install "new style" sealed wheel bearings, as used in both ABS and non-ABS equipped 2000 to present Harley-Davidson and Buell models, without damaging the wheel. The kit is used for bearings for 3/4", 1" as well as 25mm axles. Kits supplied before 2007 did not include the tools for 25mm but can be upgraded with the optional bearing installer and bearing puller kit. For the cast 5- and 7-lug wheels in 2010 to present CVO's and all 2014 to present Touring a tool support plate must be ordered separately.

741912 Wheel bearing installer & remover kit for 3/4", 1" and 25mm axles

751077 Optional bearing installer & bearing puller for 25 mm axle



NEW



JIMS TIRE AND ENGINE ROTATOR

Use to rotate the front or rear tire. Have you ever wished you had a third hand? Well, with this Jims tool you do. Think about the possibilities of being able to put your motorcycle in high gear and turn the rear wheel with one hand and having the internal engine parts rotate. Check tappet adjustments, check cam timing, ignition timing, check primary chain adjustments, rear belt or chain adjustments, check spoke torque and install or remove any part or parts that need the engine rotated. Can also be used for finding the air fill and cleaning the wheel or tire. Ratchet, drive extension and socket not included.

753615 Jims tire and engine rotator

CHEMICALS & TOOLS

NEW



TIRE PUMP FOR MILITARY 45CI MODELS

An exact copy of the stock tire pump and clamps as found on WLA and WLC models, made by vintage bike parts specialist Samwel Supplies. The tire pump clamps have to be ordered separately.

745967 Tire pump (OEM 11553-41M)

745968 Set of 2 tire pump clamps (OEM 11557-40M)



753621 **NEW** Tool support plate for 5- and 7-lug cast wheels

24



NEW



BRAKE FLUID ID AND CORROSION DETECTION STRIPS

We all know the hydraulic fluid in brake and clutch systems may need to be changed or flushed. The question is: When? JIMS has the answer. These detection strips reveal the condition of the fluid, as well as the hydraulic system itself. For obvious safety reasons, we feel these are a must for service departments as well as the home mechanic. BrakeStrip detection strips also determine whether there is DOT 3, DOT 4 or a combination of the two fluids in the system. Sold to dealer in packs with 100 strips.

753609 BrakeStrip detection strips, 100-pack



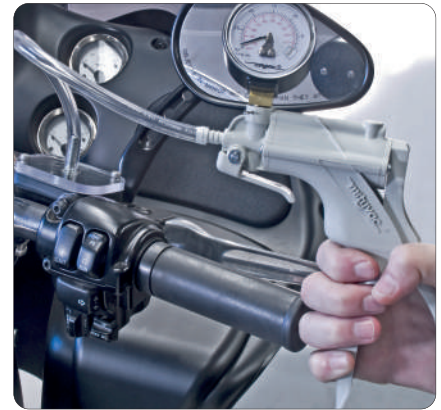
NEW

MASTER CYLINDER BRAKE BLEEDING SOLUTION

At last there is now a hydraulic brake bleeding system where seeing is believing. This vacuum bleeding device consists of a transparent cap that forms a tight seal to the master cylinder and has a fitting to attach a vacuum pump. After the brake system has been filled with fluid and primed, the bleeder cap is installed on the master cylinder and the vacuum pump is applied. Under a vacuum of 30 to 40 inches Hg (a pressure differential of about 15 to 20 psi) air will be drawn out of the system and the bubbles will be visible through the transparent cap. When the bubbles subside, there is no more air in the system. This is especially advantageous with ABS and dual disc brake systems. It is also a cleaner way to purge the system of air with less fluid used and a reduced chance of cosmetic damage due to brake fluid spillage. Mityvac vacuum hand pump is not included but must be ordered separately.

753627 Master kit with all 5 caps

751136 Mityvac vacuum hand pump



Individual brake bleeder caps

753628 Fits the front master cylinder on 2008 to present Touring and 2006 to present V-Rod

753629 Fits the front master cylinder on 1996 thru 2003 Sportster, 2002 thru 2005 V-Rod, 1996 thru 2005 Softail, 1996 thru 2005 Dyna and 1996 thru 2004 Touring

753630 Fits the clutch master cylinder on 2014 to present Touring and 2006 to present V-Rod

753631 Fits the rear master cylinder on 2008 to present Touring

753632 Fits the rear master cylinder on 1999 thru 2007 Touring



NEW

JIMS REVERSE BRAKE BLEEDING TOOL

The reverse brake bleeding tool will make the servicing and bleeding of brake lines an easy job. This tool will push the fluid from the caliper to the master cylinder, making sure all air bubbles will be removed from the system. There is no more guess work with covered brake systems, once there are no more bubbles rising in the master cylinder, the lines are properly bled.

Note: Most ABS systems on Harley-Davidsons also need Diag4Bike, Twin Scan II or III, or Harley's Digital Technician to perform a bleeding job.

751137 Jims Reverse brake bleeding tool

751138 Jims Spare fittings pack Reverse bleeder





NEW

JIMS VACUUM FED FORK FILLING TOOL

This easy to use tool will eliminate the need on Touring models to remove the fairing in order to change the fork oil. To drain the fluid, simply insert the tapered fitting into the drain hole and create a vacuum using the separately available Mityvac vacuum hand pump. Once you reach approximately 23lbs. of vacuum pressure, rotate the valve and instantly the vacuum will draw the pre-measured amount of fork fluid into the fork tube. The Mityvac vacuum hand pump can also be used for a various other applications such as brake bleeding, fluid transfers and vacuum diagnostics.

Note: Not for use with cartridge type forks, Upside Down and other inverted fork assemblies



- 751135** Jims Vacuum fork filling tool
- 751136** Mityvac vacuum hand pump



SHOCK PRE-LOAD TOOLS

Single hand tools used to adjust the spring pre-load of the rear shock absorbers. Does not require jacking or lifting of the rear wheel off the ground. The universal type works on most Harley models, except XG500 & XG750 Street, XR1200 and 2016 to present XL models, nor XL and Dyna models equipped with Premium Emulsion Shocks. The Softtail version works on all Softtail models, including Deuce, Rocker and Breakout.

- A. 750803** Universal spring preload tool (OEM 94448-82B)
- B. 741884** Softtail spring preload tool (OEM 94455-89)



SPECTRO'S ALL PURPOSE SUSPENSION, BRAKE AND METAL PARTS CLEANER

Suspension cleaner is a much better product for cleaning oil off of metal than a brake cleaner could ever be. We just couldn't come out with this new "brake cleaner" and call it brake cleaner. You will really like the suspension cleaner for removing oil from anything. An ideal spray to quickly clean and degrease all metal surfaces, leaving no residue. Works perfectly when used to clean your front or rear suspension parts, disc brake rotors, calipers and brake pads. Can also be used for de-greasing engine parts. Sold in 12.5 oz bottles.

- 235213** 12.5 oz Spray can (each)
- 235215** Shop case of 12 spray cans

NEW



SPECTRO WATERPROOF GREASE

This multi-grade, extreme pressure grease does not thin out at high temperatures, and provides superior protection in all critical applications. Ideal for use in wheel bearings, steering head bearings, and swing arm pivots.

- 235212** 6-pack 1 lb. (0.454kg) tubs
- 741765** Tub 1 lb. (0.454kg)
- 744438** 10-pack 14.5 oz. (0.411 kg) grease gun cartridges
- 744439** 14.5 oz. (0.411 kg) grease gun cartridge

CHEMICALS & TOOLS

24

