



PERFORMANCE PRODUCTS
FOR HARLEY-DAVIDSON

www.zodiac.nl

PRODUCT NEWS

ISSUE 45 • 30 • MARCH 2025



SOUNDSTREAM

Bluetooth™ androidauto



SOUNDSTREAM V2 RADIO WITH APPLE CAR PLAY & ANDROID AUTO FOR BATWING 1998-2013 Not just a radio but an upgrade head unit that fits in the OEM location [Read more inside 30-002](#)



RR REDTHUNDER



REDTHUNDER SLIP-ON MUFFLERS FOR MILWAUKEE EIGHT TOURING Slip-On mufflers install quick and easy on the stock exhaust headers [Read more inside 30-006](#)



RSD SECTOR CAM COVER FOR MILWAUKEE EIGHT Take your Milwaukee Eight to the next level [Read more inside 30-013](#)



Joker MACHINE

JOKER MACHINE BRIDGE STYLE PULLBACK RISERS These risers give a 1 1/2" (3.8cm) pullback with a 2 1/2" (6.4cm) rise [Read more inside 30-016](#)



RICK'S® MOTORCYCLES

RICK'S CLASSIC ADJUSTABLE BRAKE AND CLUTCH LEVER SETS Adjustable hand levers with approval in "Classic" design offer a perfect [Read more inside 30-017](#)



Le Pera

LE PERA TAILWHIP FOR TOURING This is the 2-up version of Le Pera's Kickflip seat [Read more inside 30-002](#)



facebook.com/zodiacbikers
instagram.com/zodiacbikers
www.zodiac.nl/youtube



SOUNDSTREAM V2 RADIO WITH APPLE CAR PLAY & ANDROID AUTO FOR BATWING 1998-2013

NEW **SOUNDSTREAM** **Bluetooth™**
 Works with **Apple CarPlay**
androidauto

Not just a radio but an upgrade head unit that fits in the OEM location.

Features:

- Uses the OEM mounting hardware and requires no extra brackets or trim rings
- Uses OEM radio antenna, no adapters required
- Includes 21" (53cm) long USB cable to install on either side of the BatWing fairing
- Works with OEM handlebar audio controls, requires no separate control module
- IPX5 water-resistant faceplate, safe for all weather & washing
- 7" high-definition widescreen LCD with ultra bright 1000NIT backlight
- Wireless Apple Carplay & wireless Android Auto with voice assistants
- Bluetooth Wireless Connectivity for audio playback & control
- Bluetooth wireless connectivity for audio playback & control
- Video camera RCA Input with 12V trigger & on-screen shortcut
- 13-band Digital Equalizer with preset & custom settings built-in

- 200W 4-Channel Amplifier built-in, Class A/B & 2-Ohm stable
- 5-Volt RCA Audio Outputs for front, rear, & subwoofer amplifiers
- High Pass Crossover separate for front & rear speaker or RCA outputs
- Low Pass & Subsonic Crossover for subwoofer RCA output
- LED indicator lights built into the front panel, uses OEM connector

Fits Touring 1998-2013 and Trike 2009-2013 with Batwing fairing, upgrades from OEM Single DIN Audio to 7" LCD display
Compatible with OEM handlebar audio controls
770247 V2 Plug-N-Play OE fit Apple CarPlay and Android Auto 7" head unit



755514



755508

LE PERA TAILWHIP FOR TOURING



This is the 2-up version of Le Pera's Kickflip seat. It's more comfort for the passenger or just another platform to let your adventurous side explore, the whipped-up tail will give you what you are looking for. Standard and Daddy Long Leg seats give the driver a 12 1/2" (32cm) wide seating area, and the passenger 7 1/2" (19cm) wide seating area. The Daddy Long Legs version puts the driver 2" (5cm) further back in the seat. The Up Front version gives the driver a 11 3/4" (30cm) wide seating area.

Fits all 96, 103, 107 & 114CI Touring 2018-2023

- 755505** TailWhip Seat, Basket Weave
- 755506** TailWhip Seat, Pleated
- 755507** TailWhip Seat, Double Diamond stitch
- 755508** TailWhip Seat, Chestnut Double Diamond stitch
- 755509** TailWhip Daddy Long Legs Seat, Basket Weave
- 755510** TailWhip Daddy Long Legs Seat, Pleated
- 755511** TailWhip Daddy Long Legs Seat, Double Diamond stitch
- 755512** TailWhip Up Front Seat, Basket Weave
- 755513** TailWhip Up Front Seat, Pleated
- 755514** TailWhip Up Front Seat, Double Diamond stitch
- 755515** TailWhip Up Front Seat, Chestnut Double Diamond stitch

Fits all 121CI Touring 2023 to present and all 117CI Touring 2024 to present

- 755553** TailWhip Seat, Basket Weave
- 755556** TailWhip Seat, Pleated
- 755554** TailWhip Seat, Double Diamond stitch
- 755558** TailWhip Seat, Chestnut Double Diamond stitch
- 755555** TailWhip Seat, Gripp Double Diamond stitch
- 755557** TailWhip Seat, Gripp Pleated
- 755563** TailWhip Daddy Long Legs Seat, Basket Weave
- 755566** TailWhip Daddy Long Legs Seat, Pleated
- 755564** TailWhip Daddy Long Legs Seat, Double Diamond stitch
- 755565** TailWhip Daddy Long Legs Seat, Chestnut Double Diamond stitch
- 755559** TailWhip Up Front Seat, Basket Weave
- 755562** TailWhip Up Front Seat, Pleated
- 755560** TailWhip Up Front Seat, Double Diamond stitch
- 755561** TailWhip Up Front Seat, Chestnut Double Diamond stitch



ZODIAC DISPOSABLE PONCHO



Imagine you go to a bike meet or other outdoor event and it starts raining. Wouldn't it be nice to have a poncho to keep you dry? Well, here you have a very small package that fits in tiny little spaces and unfolds to the Zodiac Disposable poncho. Used? Put it in the garbage bin, a new one is cheap too.
999985 Zodiac Orange disposable poncho



755505 Basket Weave **755506** Pleated
755507 Double Diamond Stitch **755508** Chestnut DD Stitch



ADJUSTABLE DRIVER BACKREST FOR TOURING



Height and rake adjustable driver backrest for use with OEM style one-piece slotted buddy seat. Back pad can also fold down completely forward to make it easy for your passenger to mount.

Fits Touring 1997 to present with ZPN 770826, 770827, 770828, 770829, 770840 and 770841 or OEM one-piece slotted buddy seat

770766 Rider backrest kit (OEM 52587-09, 52589-09A, 52914-09A)



DETACHABLE ONE PIECE SISSY BAR FOR SPORTSTER

A one-piece sissy bar eliminates the need for separate side plates. Round tube sissy bar has a kickback top and comes with the matching back pad in a convenient kit. Fit or take off all in less than a minute. Kit has a 51cm total height, pad is 19cm wide and 16cm high.

Fits XL Sportster 2004-2022 (except XL1200CX Roadster 2016-2020)

For bikes not already equipped with docking points a docking hardware kit (OEM 52300645 or 52300646) must be ordered separately

770769 Kit with detachable black sissy bar and black back pad (OEM 51146-10 sissy bar, 52631-07 pad)
086066 Docking Hardware Kit, fits ZPN 770761, 770762 & 770769 Sissy Bar Kits and ZPN 086065 side plates (OEM 53529-04)



DETACHABLE ONE PIECE SISSY BAR FOR LOW RIDER & SPORTGLIDE



A one-piece sissy bar eliminates the need for separate side plates. Round tube sissy bar has a kickback top and comes with the matching back pad in a convenient kit. Fit or take off all in less than a minute. Kit has a 41cm total height, pad is 19cm wide and 16cm high.

Fits FLFB, FLFR, FXLR, FXLRST and FXRST 2018 to present

For bikes not already equipped with docking points a docking hardware kit (OEM 52300645 or 52300646) must be ordered separately

770768 Kit with detachable chrome sissy bar and black back pad (OEM 52300432 sissy bar, 52631-07 pad)
770770 Kit with detachable black sissy bar and black back pad (OEM 52300434 sissy bar, 52631-07 pad)



DETACHABLE SHORTY SISSY BAR FOR SPORTSTER

For those who want to change accessories fast and easy we have a shorty passenger sissy bar upright with the matching back pad in a convenient kit. Fit or take off all in less than a minute. Kit has a 32cm total height, pad is 14cm wide and 7cm high.

Fits XL Sportster 2004-2022 (except XL1200CX Roadster 2016-2020)

For bikes not already equipped with docking points a ZPN 086066 docking hardware kit must be ordered separately

770762 Kit with detachable chrome side plates, detachable chrome sissy bar and black back pad (OEM 53913-04 side plates, 51512-02 sissy bar, 52513-94 pad)

086066 Docking Hardware Kit, fits ZPN 770761, 770762 & 770769 Sissy Bar Kits and ZPN 086065 side plates (OEM 53529-04)



DETACHABLE PADDED SISSY BAR FOR TOURING

Sissy bar is 11 1/2" (29cm) high without the pad, with the pad fitted it is some 5" (13cm) higher. The black vinyl pad is 8" (20cm) high and 11 1/2" (26cm) wide, Order required docking point kit separately. Does not fit with rigid mounted Tour Pak.

Fits 1997-2008 Touring

770758 Chrome standard height detachable sissy bar upright with black pad (OEM 52933-97C & 52924-98B)

768992 Four-point docking kit, chrome, V-Twin Mfg. (OEM 54205-09A)



DETACHABLE ONE PIECE SISSY BAR FOR FAT BOY AND BREAKOUT

A one-piece sissy bar eliminates the need for separate side plates. Round tube sissy bar has a kickback top and comes with the matching back pad in a convenient kit. Fit or take off all in less than a minute. Kit has a 45cm total height, pad is 16cm wide and 19cm high.

Fits FLFB, FLFB, FXBR & FXBRS 2018 to present
For bikes not already equipped with docking points a docking hardware kit must be ordered separately

770767 Kit with detachable chrome sissy bar and black back pad (OEM 52300439 sissy bar, 52631-07 pad)

086023 Docking hardware kit, chrome, Genuine Zodiac (OEM 52300376)

789667 Docking hardware kit, chrome, V-Twin Mfg. (OEM 52300376)



DETACHABLE RECLINER SISSY BAR & LUGGAGE RACK KITS FOR TOURING

For those who want to change accessories fast and easy we have a passenger sissy bar upright with the matching back pad together with a detachable luggage rack in a convenient kit. Fit or take off all in less than a minute, or leave the sissy bar and take off the luggage rack, it is in your hands. Sissy bar is rake-adjustable to give the very best back support. Kit has a 47cm total height, pad is 32cm wide and 23cm high, luggage rack is 32cm wide and long. Works with detachable Tour Pak.

Fits Touring 2009 to present

For bikes not already equipped with a docking hardware kit this must be ordered separately

770754 **NEW** Detachable chrome side plates and rake-adjustable chrome sissy bar with black back pad and detachable chrome luggage rack

Docking kits, fits Touring 2009-2013

768992 Four-point docking kit, chrome, V-Twin Mfg. (OEM 54205-09A)

768993 Four-point docking kit, black, V-Twin Mfg. (OEM 54246-09A)

Docking kits, fits Touring 2014 to present

350001 Four-point docking kit, chrome, Genuine Zodiac (OEM 52300353)

350002 Four-point docking kit, black, Genuine Zodiac (OEM 52300354)

best back support. Kit has a 47cm total height, pad is 29cm wide and 20cm high. Works with detachable Tour Pak.

Fits Touring 2009 to present

For bikes not already equipped with a docking hardware kit this must be ordered separately

770755 **NEW** Detachable chrome rake-adjustable sissy bar with black mid-sized back pad (OEM 52300257)

770756 **NEW** Detachable black rake-adjustable sissy bar with black mid-sized back pad (OEM 52300258)

Docking kits, fits Touring 2009-2013

768992 Four-point docking kit, chrome, V-Twin Mfg. (OEM 54205-09A)

768993 Four-point docking kit, black, V-Twin Mfg. (OEM 54246-09A)

Docking kits, fits Touring 2014 to present

350001 Four-point docking kit, chrome, Genuine Zodiac (OEM 52300353)

350002 Four-point docking kit, black, Genuine Zodiac (OEM 52300354)



MEDIUM SIZE BACKREST PAD FOR TOURING & TRIKE

NEW

C.O. Rider

Curved backrest pad fits many sissy bar uprights and provides hours of comfort to your passenger. Pad is 29cm wide, 20cm high and approx. 6cm thick.

Fits Standard Height Sissy Bar ZPN 770760 (OEM 52300324), ZPN 701416 & 770759

(OEM 52627-09), ZPN 701415 (OEM 54247-09), and OEM 52933-97B or 52805-97B. Also fits Tall Detachable Sissy Bar ZPN 770756 (OEM 52300258) and ZPN 770756 (OEM 52300258) as well as OEM 52723-06, 52300257 sissy bars

770753 Medium back rest pad (OEM 52924-98B)

BOLT-ON TALL SISSY BARS WITH PAD

NEW

These one-piece sissy bars bolt straight to the fender struts. All steel construction has a Vivid Black finish. Pads are 14cm high and 10cm wide.

Fits Sportster Custom, Forty-Eight, Iron, Low, Nightster, Seventy-Two and Super Low 2004-2022

770752 Tall black sissy bar with pad, total height 57cm

Fits FLSL Slim 2018-2021, FXBB & FXBBS Street Bob 2018 to present and FXST Standard 2020 to present

770751 Tall black sissy bar with pad, total height 62cm



QUICK RELEASE SISSY BAR KITS FOR TRIKE

NEW

A stylish 12" (30cm) high round chrome sissy bar upright with chrome backrest mount and 31 x 22cm black back rest. Slips into the trunk docking points and follows the lines of the trunk lid. Can be removed in seconds with a simple push of the release buttons.

Fits FLRT Freewheeler 2015 to present and FLTRT3 Road Glide 3 2023 to present

770760 Chrome Quick Release sissy bar with black back pad and chrome backrest mount (OEM 52300324A)



DETACHABLE SISSY BAR KITS FOR TOURING

For those who want to change accessories fast and easy we have a passenger sissy bar upright with the matching back pad in a convenient kit. Kit has a 47cm total height, pad is 32cm



DETACHABLE RECLINER SISSY BAR KITS FOR TOURING


For those who want to change accessories fast and easy we have a passenger sissy bar upright with the matching back pad in a convenient kit. Sissy bar is rake-adjustable to give the very



wide and 23cm high. Does not work with rigid mounted Tour Pak.

Fits Touring 2009 to present

For bikes not already equipped with a Docking Hardware Kit this must be ordered separately

770759  Detachable chrome side plates and chrome sissy bar with black back pad

Docking kits, fits Touring 2009-2013

768992 Four-point docking kit, chrome, V-Twin Mfg. (OEM 54205-09A)

768993 Four-point docking kit, black, V-Twin Mfg. (OEM 54246-09A)

Docking kits, fits Touring 2014 to present, does not fit with rigid mount Tour-Pak luggage

350001 Four-point docking kit, chrome, Genuine Zodiac (OEM 52300353)

350002 Four-point docking kit, black, Genuine Zodiac (OEM 52300354)



MANUALS AND SPARE PARTS CATALOGS FOR VINTAGE MODELS



A must for every owner of a vintage Harley-Davidson. Available in English only.

For EL and FL Knucklehead 1937-1948, UL Flathead 1937-1948 and EL & FL Panhead 1948-1949
782985 Spare parts catalog (OEM 13850-49)

For EL & FL Knucklehead 1937-1947 and UL Flathead 1937-1948
782986 Service manual

For WLA Army 45CI 1940 and later
782988 Spare parts catalog
782990 Technical manual
782991 Service manual TM9-1879
782993 Mechanics handbook

For WLC Canadian Army 45CI 1942-1944
782987 Operators manual, WLC specific
782992 Technical manual, WLC specific
782990 Technical manual
782991 Service manual TM9-1879

For WL 45CI Solo and G 45CI Servi-Car 1938-1950
782994 Spare parts catalog (OEM 13851-50)



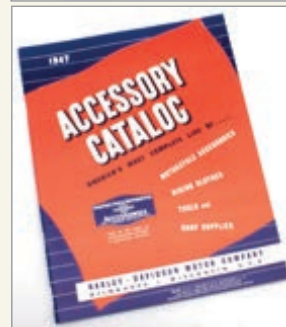
For V-Twin and Sidecar 1922-1928
734972  Spare parts catalog




For V-Twin and Sidecar 1928-1932
734973  Spare parts catalog



For V-Twin, Servi-Car and Sidecar 1930-1940
734974  Spare parts catalog



Accessory Catalog
734975  Issue 1936
734976  Issue 1941
734977  Issue 1947



Brochure
734978  WR and WR-TT Competition 1950



RIGID MOUNT SISSY BAR & RACK KITS FOR SOFTAIL



These kits contain a passenger sissy bar upright with the model-specific rigid mount side straps, matching back pad and matching luggage rack. They are rigid mounted but you can uninstall the complete kit or just the sissy bar or just the luggage rack with regular hand tools in a minute or five. Kit has a 49cm total height, pad is 29cm wide and 22.5cm wide, rack is 22.5cm wide and 21.8cm long.

Fits FLST Heritage, FLSTC Heritage Classic & FLSTS Heritage Springer 1986-2017, FLSTF Fat Boy 1987-2006, FLSTN Deluxe 2005-2017, FXST Standard 1984-2005, FXSTB Night Train 1999-2005, FXSTC Custom 1986-1999, FXSTS Springer 1988-2005 and FXSTSB Bad Boy 1995-1997

770765 Kit with rigid mount chrome side plates, chrome sissy bar, black back pad and chrome luggage rack (OEM 53374-03 side plates, 52736-85A sissy bar, 52348-97 or 52347-97 pad, 50300030 rack)



REDTHUNDER SLIP-ON MUFFLERS FOR MILWAUKEE EIGHT TOURING



Slip-on mufflers install quick and easy on the stock exhaust headers. Tailored by Italian craftsmen from stainless steel for the muffler body and billet aluminum for the end caps. The E-approval makes them street legal all over the European community. Muffler bodies are high luster polished or tough Cerakote black finished. These mufflers fit only on Touring models produced for the European market (VIN starting with 5HD). Slip-on mufflers for 2021 to present models feature, like the OEM mufflers, the bungs for the rear O2 sensors.

Fits 2017-2020 Touring built for the European market, approved for Euro-4 emission

760953 Slip-on mufflers, pair, Cerakote black stainless steel

760954 Slip-on mufflers, pair, polished stainless steel

Fits 2021 to present Touring built for the European market, approved for Euro-5 emission

760952 Slip-on mufflers, pair, Cerakote black stainless steel

760951 Slip-on mufflers, pair, polished stainless steel



REDTHUNDER SLIP-ON MUFFLERS FOR SPORT GLIDE



Slip-on muffler install quick and easy on the stock exhaust headers. Tailored by Italian craftsmen from stainless steel for the muffler body and billet aluminum for the end cap. The E-approval makes them street legal all over the European community. Muffler bodies are high luster polished or tough Cerakote black finished.

Fits 2018-2020 Sport Glide, approved for Euro-4 emission

760946 Slip-on muffler, Cerakote black stainless steel

760947 Slip-on muffler, polished stainless steel



REDTHUNDER SLIP-ON MUFFLERS FOR MILWAUKEE EIGHT SOFTAIL



Slip-on mufflers install quick and easy on the stock exhaust headers. Tailored by Italian craftsmen from stainless steel for the muffler body and billet aluminum for the end caps. The E-approval makes them street legal all over the European community. Muffler bodies are high luster polished or tough Cerakote black finished. Slip-on mufflers for 2021 to present models feature, like the OEM mufflers, the bungs for the rear O2 sensors.

Fits 2018-2020 Fat Boy and Breakout, approved for Euro-4 emission

760994 Slip-on mufflers, pair, Cerakote black stainless steel

760995 Slip-on mufflers, pair, polished stainless steel

Fits 2021 to present Fat Boy and Breakout, approved for Euro-5 emission

760996 Slip-on mufflers, pair, Cerakote black stainless steel

760997 Slip-on mufflers, pair, polished stainless steel

Fits 2018-2020 Softail Standard, Slim, Street Bob and Low Rider, approved for Euro-4 emission

760939 Slip-on mufflers, pair, Cerakote black stainless steel

760940 Slip-on mufflers, pair, polished stainless steel

Fits 2021 to present Softail Standard, Slim, Street Bob and Low Rider, approved for Euro-5 emission

760941 Slip-on mufflers, pair, Cerakote black stainless steel

760942 Slip-on mufflers, pair, polished stainless steel



REDTHUNDER SLIP-ON MUFFLERS FOR SPORT GLIDE



Slip-on muffler installs quick and easy on the stock exhaust headers. Tailored by Italian craftsmen from stainless steel for the muffler body and billet aluminum for the end cap and meticulously calibrated to offer a sound that ranges from deep, low tones to a more aggressive high-rpm sound. Muffler bodies are high luster polished or tough Cerakote black finished.

Fits 2018 to present Sport Glide

761474 Slip-on muffler, Cerakote black stainless steel

761475 Slip-on muffler, polished stainless steel



Except where mentioned differently, all exhaust systems, mufflers, drag-pipes, etc. shown in our catalog, are for closed course competition or in show competition only. They will not meet legal noise and emission standards.



REDTHUNDER SLIP-ON MUFFLERS FOR MILWAUKEE EIGHT SOFTAIL



Slip-on muffler installs quick and easy on the stock exhaust headers. Tailored by Italian craftsmen from stainless steel for the muffler body and billet aluminum for the end cap and meticulously calibrated to offer a sound that ranges from deep, low tones to a more aggressive high-rpm sound. Muffler bodies are high luster polished or tough Cerakote black finished.

Fits 2018 to present Fat Boy and Breakout

760992 Slip-on mufflers, pair, Cerakote black stainless steel

760993 Slip-on mufflers, pair, polished stainless steel

Fits 2018 to present Softail Standard, Slim, Street Bob and Low Rider

760943 Slip-on mufflers, pair, Cerakote black stainless steel

760944 Slip-on mufflers, pair, polished stainless steel



TWO BROTHERS RACING GEN-II 2-INTO-1 EXHAUST FOR INDIAN SCOUT



Two Brothers Racing 2-into-1 exhaust systems are designed to deliver maximum torque. They feature race-inspired stainless steel headers that shave pounds off the competition to ensure a long lasting, weather-resistant, amazing sounding exhaust. From the engine, the exhaust flows through our 1 3/4" stainless tubing which includes O2 bungs to accommodate both stock and 18mm sensors. From here the exhaust steps up to 1 7/8" before dumping into the spring retained collector for increased torque. The exhaust then emerges from the collector into a 4"

diameter muffler to deliver an unparalleled sound upon exit. Generation II exhausts feature classic megaphone style mufflers with a welded-on reverse cone.

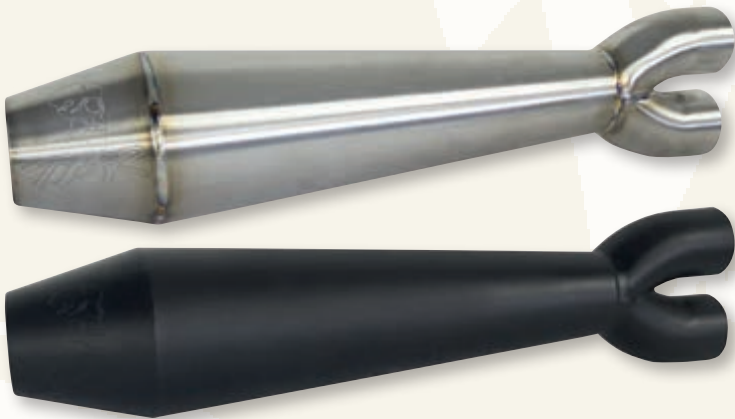
Indian Scout 2025 to present

753264 Raw Finish, Generation II muffler

753265 Black ceramic coated, Generation II muffler

Replacement parts

753227 TBR exhaust spring



TWO BROTHERS RACING GENERATION II SHORTY 2-INTO-1 EXHAUSTS



Stainless Steel 2-into-1 system designed to deliver maximum torque. The race-inspired headers without catalytic converters shave pounds off the competition to ensure a long lasting, weather-resistant, amazing sounding exhaust.

Fits all Touring 2017 to present

Note: All 2021 and later European models (Euro 5) require eliminators ZPN 744444 for the rear O2 sensor and digital tuning with Diag4Bike or similar to disable related CEL (Check Engine Light) and DTC's (Digital Trouble Code)

753248 Raw finish

753249 All black

Fits all Indian Chief 2022 to present

753254 Raw finish

753255 All black

Fits all Indian Challenger 2020 to present and all Indian Pursuit 2022 to present

753258 Raw finish

753259 All black



TWO BROTHERS RACING SHORTY 2-INTO-1 EXHAUSTS



Stainless Steel 2-into-1 system designed to deliver maximum torque. The race-inspired headers without catalytic converters shave pounds off the competition to ensure a long lasting, weather-resistant, amazing sounding exhaust. All versions feature a black slash cut end cap.

Fits all Indian Challenger 2020 to present and all Indian Pursuit 2022 to present

753250 Raw finish

753251 All black

Fits all Indian Chief 2022 to present

753252 Raw finish

753253 All black



TWO BROTHERS RACING COMP-S 2-INTO-1 EXHAUST SYSTEMS



Two Brothers Racing 2-into-1 exhaust systems are designed to deliver maximum torque. They feature race-inspired stainless steel headers that shave pounds off the competition to ensure a long lasting, weather-resistant, amazing sounding exhaust. Exhausts come complete with heat shields. From the engine, the exhaust flows through our 1 3/4" stainless tubing which includes O2 bungs to accommodate both stock and 18mm sensors. From here the exhaust steps up to 1 7/8" before dumping into the spring retained collector for increased torque. The exhaust then emerges from the collector into a 4" diameter muffler to deliver an unparalleled sound upon exit. Competition-S exhausts feature removable end caps in aluminum or carbon fiber.

Fits all Indian Chief 2022 to present
753256 Ceramic black coated, 2-into-1 with Carbon fiber end cap

753257 Raw Finish, 2-into-1 with carbon fiber end cap

Fits all Indian Challenger 2020 to present and all Indian Pursuit 2022 to present


753260 Ceramic black coated, 2-into-1 with Carbon fiber end cap

753261 Raw Finish, 2-into-1 with carbon fiber end cap

Fits all Indian Scout 2025 to present

753263 Ceramic black coated, 2-into-1 with Carbon fiber end cap

753262 Raw finish, 2-into-1 with carbon fiber end cap

 Except where mentioned differently, all exhaust systems, mufflers, drag-pipes, etc. shown in our catalog, are for closed course competition or in show competition only. They will not meet legal noise and emission standards.



RADICAL RADIUS FOR INDIAN SCOUT



Freedom Performance Radical Radius exhausts feature one piece 2 1/2" (64mm) outer diameter 16 gauge heavy duty heat shields that cover the headers for a full 220 degrees and they have a three-step header system for optimal horsepower and torque. The curved mufflers give an aggressive deep growl. Baffles are removable, and a quiet baffle kit is available as an accessory. These exhausts come complete and ready to bolt on and include stainless steel hardware and brackets.

Fits all Indian Scout 2015-2024

IIN00074 All chrome with Slash Cut tips

IIN00344 Black with chrome Slash Cut tips

783303 All chrome with straight Star tips

IIN00075 Chrome with sculpted black Slash Cut tips

783304 Chrome with straight black sculpted Star tips

783306 Chrome with straight black Star tips

IIN00076 Black with sculpted black Slash Cut tips

783305 Black with straight sculpted black Star tips

783307 All black with straight Star tips

783308 Black with straight chrome Star tips

735997 Quiet baffles

Fits all Indian Scout 2025 to present
Models with passenger pegs require ZPN 783406 relocators kit

IIN00625 All chrome with Slash Cut tips

IIN00626 Chrome with sculpted black Slash Cut tips

IIN00627 Black with sculpted black Slash Cut tips

IIN00628 Chrome with black Slash Cut tips

IIN00629 All black with Slash Cut tips

IIN00636 Black with chrome Slash Cut tips

IIN00637 Chrome with sculpted gold Slash Cut tips

IIN00638 Chrome with gold Slash Cut tips

IIN00639 Black with sculpted gold Slash Cut tips

IIN00640 Black with gold Slash Cut tips

IIN00630 All chrome with straight Star tips

IIN00631 Chrome with sculpted black straight Star tips

IIN00632 Black with sculpted black straight Star tips

IIN00633 Chrome with black straight Star tips

IIN00634 All black with straight Star tips

IIN00635 Black with chrome straight Star tips

IIN00641 Chrome with sculpted gold straight Star tips

IIN00642 Chrome with gold straight Star tips

IIN00643 Black with sculpted gold straight Star tips

IIN00644 Black with gold straight Star tips

735997 Quiet baffles

783406 Passenger peg relocators, pair



LIGHTED END CAPS FOR MCJ MUFFLERS



End caps feature led lighting and are sold in pairs.

789766 Lighted round end caps, Royal 80, black

789765 Lighted hexagon end caps, Royal 90 and Race 90, black

789764 Lighted round end caps, 100mm, black

789763 Lighted round end caps, 120mm, black





4" SLIP-ONS FOR INDIAN SCOUT 2025 TO PRESENT



These 4" (102mm) diameter slip-on mufflers have a simple bolt-on installation on the stock headers. They feature billet aluminum end caps with a chrome or anodized finish and removable baffles for unmatched sound and performance.

Fits all Indian Scout 2025 to present, all chrome

- IIN00553** Slip-on muffler with Racing end cap
- IIN00555** Slip-on muffler with Liberty end cap
- IIN00557** Slip-on muffler with Eagle end cap
- IIN00585** Slip-on muffler with Straight end cap
- IIN00595** Slip-on muffler with Combat end cap

Fits all Indian Scout 2025 to present, chrome with black sculpted end cap

- IIN00554** Slip-on muffler with Racing end cap
- IIN00556** Slip-on muffler with Liberty end cap
- IIN00558** Slip-on muffler with Eagle end cap
- IIN00586** Slip-on muffler with Straight end cap
- IIN00596** Slip-on muffler with Combat end cap

Fits all Indian Scout 2025 to present, chrome with solid black end cap

- IIN00569** Slip-on muffler with Racing end cap
- IIN00562** Slip-on muffler with Liberty end cap
- IIN00576** Slip-on muffler with Eagle end cap
- IIN00587** Slip-on muffler with Straight end cap
- IIN00597** Slip-on muffler with Combat end cap

Fits all Indian Scout 2025 to present, chrome with gold sculpted end cap

- IIN00571** Slip-on muffler with Racing end cap
- IIN00563** Slip-on muffler with Liberty end cap
- IIN00578** Slip-on muffler with Eagle end cap
- IIN00588** Slip-on muffler with Straight end cap
- IIN00598** Slip-on muffler with Combat end cap

Fits all Indian Scout 2025 to present, chrome with all gold end cap

- IIN00570** Slip-on muffler with Racing end cap
- IIN00564** Slip-on muffler with Liberty end cap
- IIN00577** Slip-on muffler with Eagle end cap
- IIN00589** Slip-on muffler with Straight end cap
- IIN00599** Slip-on muffler with Combat end cap

Fits all Indian Scout 2025 to present, all black

- IIN00572** Slip-on muffler with Racing end cap
- IIN00565** Slip-on muffler with Liberty end cap
- IIN00579** Slip-on muffler with Eagle end cap
- IIN00592** Slip-on muffler with Straight end cap
- IIN00602** Slip-on muffler with Combat end cap

Fits all Indian Scout 2025 to present, black with black sculpted end cap

- IIN00559** Slip-on muffler with Racing end cap
- IIN00560** Slip-on muffler with Liberty end cap
- IIN00561** Slip-on muffler with Eagle end cap
- IIN00591** Slip-on muffler with Straight end cap
- IIN00601** Slip-on muffler with Combat end cap

Fits all Indian Scout 2025 to present, black with chrome end cap

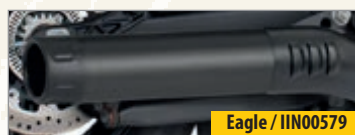
- IIN00573** Slip-on muffler with Racing end cap
- IIN00566** Slip-on muffler with Liberty end cap
- IIN00582** Slip-on muffler with Eagle end cap
- IIN00590** Slip-on muffler with Straight end cap
- IIN00600** Slip-on muffler with Combat end cap

Fits all Indian Scout 2025 to present, black with gold sculpted end cap

- IIN00575** Slip-on muffler with Racing end cap
- IIN00568** Slip-on muffler with Liberty end cap
- IIN00581** Slip-on muffler with Eagle end cap
- IIN00593** Slip-on muffler with Straight end cap
- IIN00603** Slip-on muffler with Combat end cap

Fits all Indian Scout 2025 to present, black with all gold end cap

- IIN00574** Slip-on muffler with Racing end cap
- IIN00567** Slip-on muffler with Liberty end cap
- IIN00580** Slip-on muffler with Eagle end cap
- IIN00594** Slip-on muffler with Straight end cap
- IIN00604** Slip-on muffler with Combat end cap



JOKER MACHINE TIMER COVERS



CNC machined billet aluminum timer covers are often referred to as "Points Cover" from the old days when engines had points ignition. These billet aluminum covers fit on the right front of your engine. Made in the USA by Joker machine.

Fits 107CI & 114CI Touring 2017 to present, 117CI Touring 2017-2023, all Trike 2017 to present and all Softail 2018 to present

- 768122** Finned black
- 768123** Black with highlighted fins
- 768124** Finned chrome
- 768125** Smooth black
- 768126** Smooth chrome
- 768127** Contoured beveled spun design, black
- 768128** Contoured beveled spun design, chrome



WIRING HARNESSES



These stock replacement wiring harnesses are made in the USA and they are great for custom builds and restoration jobs. The wires are color coded as OEM and all terminals are already in place to save time and hassle.

45CI

781829 Complete harness, fits 1936-1937 G, WL, UL & EL, Eastern (OEM 4735-36)

744411 Complete harness, fits 1938-1946 G, WL, UL & EL, Eastern (OEM 4735-38A/70320-38)

744412 Complete harness, fits WLA 1942-1945, Samwel (OEM 4735-42M)

744413 Complete harness, fits G, WL, UL, EL & FL 1947, Samwel (OEM 4735-47/70320-47)

744414 Complete harness, fits G, WL, EL 1948-1952 & FL 1948-1957, Samwel (OEM 4735-48/70321-48)

KH & Sportster

744415 Complete harness, fits KH 1952-1956 & XL 1957-1958, Eastern (OEM 70320-56)

781847 Complete harness, fits XLCH 1958-1964, Eastern (OEM 70320-58)

744416 Complete harness, fits XLH & XLCH 1959-1964, Eastern (OEM 70320-59)

781849 Complete harness, fits magneto equipped XLCH 1965-1969, Eastern (OEM 70320-58)

744417 Complete harness, fits XLH & XLCH 1965-1966, Eastern (OEM 70320-65)

781851 Complete harness, fits XLH 1967, Eastern (OEM 70320-67)

744418 Complete harness, fits XLH 1968-1969, Eastern (OEM 70320-68)

744419 Complete harness, fits XLH 1970-1972, Eastern (OEM 70151-70)

781840 Complete harness, fits XLCH 1970-early 1971, Eastern (OEM 70153-70)

781841 Complete harness, fits XLCH late 1971-1972, Eastern (OEM 70153-71)

744420 Complete harness, fits XLH 1973-1974, Eastern (OEM 70151-73)

781842 Complete harness, fits XLCH 1973-1974, Eastern (OEM 70153-73)

744421 Complete harness, fits XLH 1975-1976, Eastern (OEM 70006-75)

781831 Complete harness, fits XLCH 1975-1976, Eastern (OEM 70001-75)

781832 Complete harness, fits XLCH 1977, Eastern (OEM 70001-76)

781835 Main harness, fits XLH 1977, Eastern (OEM 70006-76)

744422 Main harness, fits XLH & XLS 1978-1979, Eastern (OEM 70006-79)

781833 Complete harness, fits XLCH 1978, Eastern (OEM 70001-78)

781834 Complete harness, fits XLCH 1979, Eastern (OEM 70001-79)

781836 Main harness, fits all Sportster 1980, Eastern (OEM 70006-80)

781837 Main harness, fits all Sportster 1981, Eastern (OEM 70006-81)

744423 Main harness, fits all Sportster 1982-early 1984, Eastern (OEM 70006-82)

781838 Main harness, fits all Sportster late 1984-1985, Eastern (OEM 70135-84)

Big Twin

781826 Complete harness, fits all 1926-1928 JD models, Eastern (OEM 4735-16)

781827 Complete harness, fits all 1929 JD models, Eastern (OEM 4735-29)

781828 Complete harness, fits all 1930-1936 Big Twin, Eastern (OEM 4735-16)

781829 Complete harness, fits 1936-1937 G, WL, UL & EL, Eastern (OEM 4735-36)

744411 Complete harness, fits 1938-1946 G, WL, UL & EL, Eastern (OEM 4735-38A/70320-38)

744413 Complete harness, fits G, WL, UL, EL & FL 1947, Samwel (OEM 4735-47/70320-47)

744414 Complete harness, fits G, WL, EL 1948-1952 & FL 1948-1957, Samwel (OEM 4735-48/70321-48)

744424 Complete harness, fits FL 1958-1964, Samwel (OEM 70321-58)

781853 Complete harness, fits FL 1958-1964, Eastern (OEM 70321-58)

744425 Complete harness, fits FL 1965-1969, Eastern (OEM 70321-65)

744426 Main harness, fits FL 1970-1972, Eastern (OEM 70320-70)

744427 Main harness, fits FL 1973-1977, Eastern (OEM 70320-73A)

744429 Main harness, fits FL 1978-1979, Eastern (OEM 70320-78)

744430 Main harness, fits FL 1980-1984, Eastern (OEM 70320-80)

FX

781854 Main harness, fits FX 1971-1972, Eastern (OEM 70326-71)

744428 Main harness, fits FX 1973-1974, Eastern (OEM 70326-73A)

781855 Main harness, fits FX 1975-1977, Eastern (OEM 70326-75)

781856 Main harness, fits FXE 1978-1979, Eastern (OEM 70343-78)

781857 Main harness, fits FXS 1978-1979, Eastern (OEM 70353-78)

744431 Main harness, fits FXS & FXB 1980-1984, Eastern (OEM 69543-80)

781843 Main harness, fits FXWG 1980-1985, Eastern (OEM 70214-80A)

FXR

735128 Main harness, fits FXR, FXRT & FXRS 1982-early 1984, Eastern (OEM 69545-82A)

735129 Main harness, fits FXR, FXRT & FXRS late 1984-1985, Eastern (OEM 69545-84)

735130 Main harness, fits FXR, FXRT & FXRS 1986-1988, Eastern (OEM 69551-85)

735131 Main harness, fits FXR, FXRT & FXRS 1989-1990, Eastern (OEM 69551-89)

735127 Main harness, fits FXLR 1989-1990, Eastern (OEM 69555-89)

735132 Main harness, fits FXR, FXRT & FXRS 1991-1993, FXRS-CON & FXRS-SP 1993-1994, Eastern (OEM 69551-91A)

781830 Main harness, fits FXLR 1994, Eastern (OEM 69555-94)

Softail

744432 Main harness, fits all Softail 1987-1988, Eastern (OEM 70216-87A)

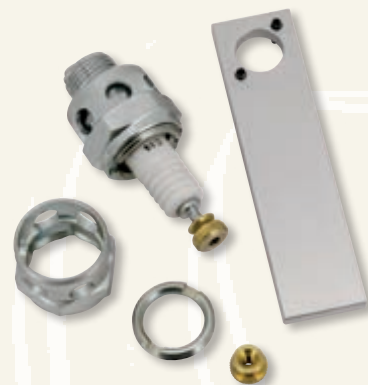
744433 Main harness, fits all Softail 1989-1990, Eastern (OEM 70216-89)

744434 Main harness, fits all Softail 1991-1992, Eastern (OEM 70216-91A)

744435 Main harness, fits all Softail 1993-1995, Eastern (OEM 70216-93)

781844 Main harness, fits all Softail 1996-1997, Eastern (OEM 70216-96)

781845 Main harness, fits all Softail 1998-1999, Eastern (OEM 70216-98)



SPARK PLUG AIR COOLED RETRO CONVERSION KIT



This easy to install and re-usable two-piece cover set converts the D-14 and D-16 Champion spark plugs to give an earlier air cooled original Harley look. Spark plugs must be ordered separately.

Fits DL, RL and WL 45CI 1929-1952, VL 1930-1936, UL 1937-1948, EL 1936-1940 and FL 1941-1947

782140 Spark plug conversion kit with installation tool and gloss zinc plated covers, V-Twin Mfg.

734961 **NEW** Spark plug cover kit, white plated, Samwel

Spark plugs, fit all high compression 45CI 1927-1952, 61CI 1927-1947, 74CI 1927-1948, 80CI 1927-1947 and Servi-Car 1953-1954 234307 Champion D-16, 6-pack (OEM 32302-09 or the No. 3 spark plug). Also replaces the OEM 32304-09 or No. 2 spark plug as the D-16 covers a wider heat range.

749853 **NEW** Champion D-16, each (OEM 32302-09 or the No. 3 spark plug). Also replaces the OEM 32304-09 or No. 2 spark plug as the D-16 covers a wider heat range.

749854 **NEW** Champion D-16, 10-pack (OEM 32302-09 or the No. 3 spark plug). Also replaces the OEM 32304-09 or No. 2 spark plug as the D-16 covers a wider heat range.

749670 Champion D-14, each (OEM 32300-09 or the No. 4 spark plug)

749684 Champion D-14, 10-pack (OEM 32300-09 or the No. 4 spark plug)





CLASSIC BATTERY CASE



Looks like the original battery as found on most 1937-1964 6 Volt models but it is NOT a battery. It is a housing with exactly the same dimensions as the battery: 215mm high, 115mm wide and 100mm long and comes with a top that has the terminals just like the original battery. It takes the OEM top cover and rods and can host a slightly smaller 6 or 12 Volt battery.

Fits Big Twin 1937-1964, WL 1937-1952 and Servi-Car 1937-1953

735123 Stock look battery case



BATTERY FOR VINTAGE MODELS CONVERTED TO 12 VOLTS



For those who have a vintage Harley that is converted from 6 to 12 Volt we offer this 12 Volt battery that fits inside a horseshoe style oil tank or the stock battery box on a 45CI WL. As it is shorter than the stock 6 Volt battery you have to use a rubber spacing block to keep it in a secure position. The IntAct battery is supplied dry charged and includes an acid pack. The Samwel battery comes dry charged too but does not include the necessary battery acid. We have battery acid available in one liter bottles that can be shipped as road cargo only. Alternatively you can purchase battery acid from a local car shop or DIY store.

12 Volt 5.5 AH battery, length 4 1/16" (103mm), width 3 9/16" (90mm), height 4 1/2" (114mm), Top A

742657 12 Volt battery, Samwel. Supplied dry without acid pack. Takes 0.5 Liter battery acid

738870 12 Volt battery, intAct. Supplied dry but including acid pack

Battery Acid

738872 Sulphuric battery acid, 1 liter bottle



OPTIMATE 1 VOLTMATIC 6 & 12 VOLT BATTERY CHARGER



OptiMate 1 VoltMatic automatically adapts to the battery voltage (6V or 12V). Just connect it and the VoltMatic does the rest, no supervision required. Ideal for standard, GM, Gel and sealed VRLA 6V or 12V lead-acid batteries. Delivers 0.6 Amps charge current recommended for maintenance of batteries up to 28Ah as used in motorcycles.

760372 Optimate 1 VoltMatic 6-12 Volt charger



Battery Performance: Cranking Amps (CA) are measured at 32°F (0°C), Cold Cranking Amps (CCA) are measured at 0°F (-18°C), capacity in AH is stated at a 10 hour rating.

Dealer Notification: Batteries that are shipped by air (such as UPS Express Saver) are subject to Safety Regulations and therefore require special packaging and labeling. Batteries that are shipped as road cargo (such as UPS Standard and TNT Economy Express) are subject to less strict Safety Regulations.



DYNOJET POWER VISION



Power Vision is the most powerful and quickest flash device on the face of the earth for Harley-Davidson motorcycles. The Power Vision is a performance tuner and data monitor that offers the latest flash tuning technology, data logging, and other industry exclusive features. Developed to tune any fuel injected Harley-Davidson motorcycle with the Delphi ECM (Electronic Control Module), including 2011 models. The Power Vision Product Suite includes a full color touch screen flash device, vehicle interface cable, and WinPV, a Windows PC based tuning application. The Power Vision incorporates a very sophisticated, yet simple touch screen display that DOES NOT require the use of a computer to flash the ECM of your bike. Simply select the tune and follow the on-screen prompts to download the tune, and if you'd like, edit your tune without ever touching a computer! That's right, you can flash and make changes to your tune without ever getting off your bike. The Power Vision downloads and stores the stock calibration, and lets you select up to 6 different tunes that are stored on the device, and can be flashed to your bike.

The types of tunes include:

- Dynojet Preconfigured Tunes-Tunes for YOUR bike pre-loaded on the device... ready to go, right out of the box! Power Vision identifies your bike's information and automatically sorts hundreds of applicable dyno proven tunes for you to choose from.
- Custom Tunes-loaded by a custom tuning shop, or received via email and loaded on the device.
- Copy of Stock-a version of the stock calibration that is editable.

Power Vision provides insightful, valuable information on how your bike is running:

- Display all J1850 H-D vehicle data as well as wide band air-fuel ratio (when outfitted with a Dynojet Wide Band 2 or Auto Tune System) and various calculated channels, such as MPG instant and trip MPG.
- AutoTune Basic and Pro-calculates and stores fuel trims to optimize fuel curve.
- Check and clear diagnostic codes.
- Reset adaptive fuel trims and idle offset (with bike running).

There are three types of tunes that you can deliver to your bike:

1. Pre-configured tunes, these are the ones that come pre-loaded on the device or the ones you select when running the Auto-Update Client
2. Custom tunes (loaded or emailed to you by a custom tuner)
3. Use a copy of your stock tune to tweak (fine-tune).

If you choose to use the pre-configured tunes, the device will identify the ECM strategy/software level of the stock calibration, and

then automatically sort applicable tune files in groups of relevant modifications for YOUR bike. Hundreds of tunes are available and organized into relevant categories (i.e. stock improved, air intake kits, slip-ons, full exhaust systems, cams, etc.) for ease of customer use. The Power Vision holds up to 6 tunes (any combination of the 3 types) for you to choose from at your convenience, and these can be replaced as many times as you like with updated tunes. For those who want all-time optimal fuel injection tuning there are separate Autotune kits for selected models available. Autotune kits contain an Autotune module, a pair of wide band oxygen sensors with weld-in bungs and ready-to-install wiring to connect with the Power Vision.

Power Vision modules

760016 Fits models with Delphi Fuel Injection and J-1850 Databus such as Dyna 2001-2011, Softail 2001-2010, Touring 2002-2013, Trike 2009-2013, Sportster 2007-2013 and V-Rod 2002-2017, black housing

760017 **NEW** Fits models with Delphi Fuel Injection and CAN-Bus such as Street 2013-2020, XL Sportster 2014-2022, Dyna 2012-2017, Softail 2011-2020, Touring 2014-2020 and Trike 2014-2020, black housing

760014 Fits Softail 2021 to present, Touring 2021 to present, Trike 2021 to present, RA Pan America 2021 to present and RH Sportster 2021 to present, black housing

Handlebar mount kit for Dynojet Power Vision

The mount attaches to the clutch lever perch on the handlebars of all 1982 to present models with the included hardware and has a standard hole pattern for the Dynojet Power Vision.

163057 Chrome multi mount kit
163058 Black multi mount kit



Autotune kits for use with Power Vision module

785058 **NEW** Fits with ZPN 760017 on Street 2013-2020, XL Sportster 2014-2022, Dyna 2012-2017, Softail 2011-2020, Touring 2014-2020 and Trike 2014-2020

785059 **NEW** Fits with ZPN 760014 on Touring 2021 to present, Trike 2021 to present, Softail 2021 to present, RA Pan America 2021 to present and RH Sportster 2021 to present



ELIMINATOR II SU CARBURETOR KITS



No other carburetor has ever been able to approach the SU in sheer horsepower and economy over a complete RPM range. In the one and only documented comparison test of all aftermarket carburetors for the Harley, the SU easily dominated the others. A closer look at the Eliminator II SU will provide some of the reasons for its wide margin of superiority. To date no other carburetor, is equipped with the sophistication and the features necessary to even approach the Eliminator II SU in performance, dependability and consistency. All Eliminator II SU carburetor kits come with manifold, manifold gasket, all necessary mounting bolts, pushpull throttle brackets and complete installation and tuning instructions. An air cleaner or velocity stack must be ordered separately.

Kits with polished SU Eliminator II carburetor and manifold

761049 Fits Sportster 1991-2003

761035 Fits Shovelhead Big Twin 1966-1978

761036 Fits Shovelhead Big Twin 1979-1984

761042 Fits Evolution Big Twin 1984-1992

761034 Fits Evolution Big Twin 1993-2000

761045 Fits Twin Cam 1999-2005

Kits with polished SU Eliminator II carburetor and black manifold

761048 Fits Sportster 1991-2003

761044 Fits Shovelhead Big Twin 1966-1978

761041 Fits Shovelhead Big Twin 1979-1984

761043 Fits Evolution Big Twin 1984-1992

761046 Fits Evolution Big Twin 1993-2000

761047 Fits Twin Cam 1999-2005

Air cleaner kits

45mm deep air cleaners with "SU" embossed on front and foam filter element

530056 Air cleaner kit, chrome

530057 Air cleaner kit, black powder coated

Air cleaner adapter

530006 Aluminum adapter to fit a Keihin CV style air cleaner on a SU Eliminator II carburetor

Velocity stack

Fits many SU Carburetor models. Velocity stack is unfiltered and using it in a street application could potentially cause damage to your motor. We suggest using it for show or racing applications only.

530058 Velocity stack, polished

Replacement parts

761053 Carburetor without cable wheel and cable bracket

761054 Cable wheel

761055 Cable bracket for Sportster or Big Twin cables 1976-1990 style

761056 Cable bracket for 1991-2017 style Sportster or Big Twin cables 1991-2017 style

760909 Ticker pump rebuild kit for Eliminator I and II

530054 Rebuild kit for SU Eliminator II carburetor



JOKER MACHINE CHOKE KNOB



Knurled billet aluminum knob with a black hard anodized or chrome fitting for Keihin CV carburetors. Knobs are 1" (2.54cm) in diameter to give a firm grip.

Fits Keihin CV carburetor on Buell 1988-2008, Sportster 1988-2006, Evolution Big Twin 1990-2000 and Twin Cam 1999-2006

768107 Smooth black

768108 Smooth chrome

768109 8-Ball black

768110 8-Ball chrome



DYNOJET INVISION MONITOR DEVICE FOR INDIAN



Get the most out of your ride with the Dynojet inVision monitoring device. It is designed to serve you well with easy-to-read high-contrast screen and easy-to-use tactile soft touch buttons. The inVision device is a durable, weather and shock resistant design. Gain insight to critical engine data to ensure your vehicle is operating at its peak performance. The inVision also gives riders the ability to view and clear DTC's while out on a ride. Data is power, and with the supported datalogging feature you now have the power at your fingertips to review or share logs to assist with the custom tuning process. The inVision device monitors channels such as operating RPM, temperature, load, injector duty cycle, Lambda readings, throttle position, load and more to help optimize performance. It is also compatible with the

Dynojet wideband device to place vehicle data and Dynojet's own wideband data within the same log to make tuning a breeze. When you're back in the garage, your performance data can then be clearly seen using the Data Center Application within the free downloadable Power Core software. Dealers can then have Dynojet custom tailor the tune to flash new changes into your ECU. Please note that this is not a free service. The inVision easily connects via the on-board diagnostic connection, so installation won't keep you away for long.

Fits Challenger 2020 to present and Chief, Super Chief and Pursuit 2022 to present

785061 InVision Monitor Device for Indian

JOKER MACHINE COMPACT HIGH PERFORMANCE AIR CLEANER



CNC machined billet aluminum air cleaner is equipped with a genuine K&N 4" (10.2cm) diameter high flow filter. Has Joker's exclusive "baffle plate" crankcase breathing system held all together with high strength 12 point alloy mounting bolts. Improves leg clearance over the stock air cleaner assy. due to its' compact design. Available in your choice of hard black anodized or chrome plated finishes. Made in the USA by Joker machine.

Fits Sportster 1991-2006

768113 Smooth black

768114 Smooth chrome

768118 Finned black

768119 Black with highlighted fins

768120 Finned chrome

Fits XL Sportster 2007-2022

768111 Smooth black

768112 Smooth chrome

768115 Finned black

768116 Black with highlighted fins

768117 Finned chrome

Fits Keihin CV carburetor or cable operated Delphi Fuel Injection on Dyna 1999-2017, Softail 2000-2015 and Touring 1999-2007
768102 Smooth black
768103 Smooth chrome
768104 Finned black
768105 Black with highlighted fins
768106 Finned chrome

Accessories and replacement parts
768121 Pull-over rain sock
733871 Replacement K&N filter element, 98mm outer, 73mm inner, 51mm high



2007-2015 European Softail models, 2007-2016 European Dyna models and 2007 European Touring models are equipped with an Active Intake Sensor that must be removed when installing an aftermarket air cleaner. When you install a ZPN702022 "Trick-Box", which is a plug-in module for the stock wiring harness, you avoid a warning light coming on at your dash.



RSD SECTOR CAM COVER FOR MILWAUKEE EIGHT



Take your Milwaukee Eight to the next level with the Sector cam cover from Roland Sands Designs. Featuring unique details that are done during the machining process highlight the overall shape while complementing the design of this powerplant. The lower portion is low profile to ensure exhaust clearance. The specialty black coating does not allow oil and grease to adhere and a proprietary abrasion and UV resistant film protects the surface from yellowing, marring or breakage. All mounting hardware and gasket included.

Fits 107 and 114CI Touring 2017 to present, 117CI Touring 2018-2023, all Trike 2017 to present and all Softail 2018 to present
757899 RSD Sector Milwaukee Eight cam cover

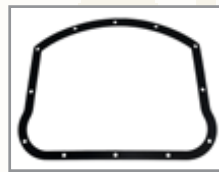


KEN'S FACTORY PANHEAD STYLE ROCKER COVERS FOR TWIN CAM



Ken's Factory adds the vintage Panhead look to your Twin Cam engine. Made by Ken's Factory from billet aluminum. Fits all Twin Cam 1999-2017. Sold in pairs.

747286 Polished rocker box set
777284 Replacement gasket set



JOKER MACHINE INSPECTION COVERS FOR SPORTSTER



CNC machined billet aluminum covers come complete with screws. Made in the USA by Joker Machine.

Fits XL & XR Sportster 2004-2022

768151 Finned black
768152 Black with highlighted fins
768153 Finned chrome
768154 Techno black
768155 Joker black



761070



761074

MANIFOLDS FOR SU CARBURETORS



Cast aluminum manifolds to install a SU carburetor on stock stroke engines are supplied without hardware.

761075 Fits Sportster 1957-1985 and Shovelhead 1966-1984, polished
761072 Fits Sportster 1957-1985 and Shovelhead 1966-1984, black
761071 Fits Sportster 1986-2006, polished
761074 Fits Sportster 1986-2006, black
761070 Fits Evolution Big Twin 1984-1999 and Twin Cam 1999-2005, polished
761073 Fits Evolution Big Twin 1984-1999 and Twin Cam 1999-2005, black

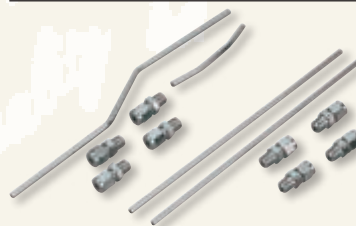


TITANIUM PUSHROD COVER KITS



Kits give a titanium lookalike appearance and include four of each seals, springs, cups, inner, upper and lower covers and work with stock and aftermarket fixed length pushrods, as well as with adjustable pushrods.

736941 Titanium pushrod cover kit, fits Shovelhead Big Twin 1966-1984
736942 Titanium pushrod cover kit, fits Evolution Big Twin 1984-2000
736943 Titanium pushrod cover kit, fits Twin Cam 1999-2017



CHROME ROCKER OIL LINES



Replacement rocker oil lines for Sportster and Shovelhead. Each set includes fittings and seals.

120111 Fits Shovelhead 1966-1984, Genuine Zodiac (OEM 62783-66A & 62785-66A, 63526-57, 62484-81, 63527-57A, 63529-57, 63529-74)
736928 Fits Shovelhead 1966-1984, V-Twin Mfg. (OEM 62783-66A & 62785-66A, 63526-57, 62484-81, 63527-57A, 63529-57, 63529-74)
120110 Fits Sportster 1957-1985, except XLCH magneto models 1957-1969, Genuine Zodiac (OEM 17324-57A, 62484-81, 63526-57, 63527-57, 63529-57, 63529-74)
736929 Fits Sportster 1957-1985, except XLCH magneto models 1957-1969, V-Twin Mfg. (OEM 17324-57A, 62484-81, 63526-57, 63527-57, 63529-57, 63529-74)
700384 Replacement seal, Athena, 10-pack (OEM 63529-57, 63529-74)
022373 Replacement seal, Zodiac, 10-pack (OEM 63529-57, 63529-74)



PRIMARY SHIFTER SHAFT BUSHING



Stock replacement for the bushing in the outer primary cover.

Fits Big Twin 1983-2017, some have just one, some use two
789455 Shifter shaft bushing, each (OEM 33713-83, 42642-00A)
Fits XL & XR Sportster 2006-2022 and air cooled Buell 2006-2010
735164 Shifter shaft bushing, each (OEM 40574-06)
735143 Shifter shaft bushing, 10-pack (OEM 40574-06)



JOKER MACHINE DERBY COVERS



CNC machined billet aluminum covers. Made in the USA by Joker machine.

Fits Sportster 2004-2022

- 768156 Finned black
- 768157 Black with highlighted fins
- 768158 Finned chrome
- 768159 Techno black
- 768160 Joker black
- 768161 Smooth black
- 768162 Smooth chrome

Fits Dyna 1999-2017, Softail 1999-2017, Breakout, Deluxe, Fat Bob, Fat Boy, Heritage Classic, Low Rider and Street Bob 2018, Touring 1999-2015 and Trike 2009-2015

Note: Dyna 2006 and all 2007 and later models require the separate purchase of ZPN 231729 or ZPN 748907 gasket

- 748907 Derby cover gasket, AFM Aluminum Foamet Composite Material, Cometic, each (OEM 25416-99C, 17369-06)
- 231729 Derby cover gasket (OEM 25416-99A)
- 768130 Finned black
- 768131 Black with highlighted fins
- 768129 Finned chrome
- 768132 Joker chrome
- 768134 Smooth black
- 768133 Smooth chrome

Fits FLHTCUL 2015, FLHTKL 2015, all Touring 2016 to present and all Trike 2016 to present

- 768135 Finned black
- 768137 Black with highlighted fins
- 768136 Finned chrome
- 768138 Smooth black
- 768139 Smooth chrome
- 768140 V-fin black
- 768141 V-fin black with highlighted fins
- 768142 V-fin chrome
- 768143 Techno black
- 768144 Techno black with clear cuts
- 768145 Techno chrome

Fits FLSB Sport Glide 2018 and all Softail 2019 to present

- 768146 Finned black
- 768147 Black with highlighted fins
- 768148 Finned chrome
- 768149 Smooth black
- 768150 Smooth chrome



ROLAND SANDS DESIGN SECTOR DERBY COVERS FOR MILWAUKEE EIGHT



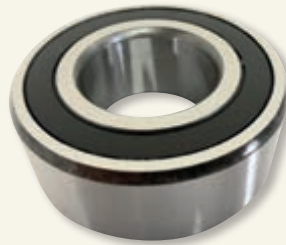
Take your Milwaukee Eight to the next level with the Sector derby cover from Roland Sands Design. Featuring unique details that are done during the machining process highlight the overall shape while complementing the design of this powerplant. The specialty black coating does not allow oil and grease to adhere and a proprietary abrasion and UV resistant film protects the surface from yellowing, marring or breakage. All mounting hardware and gasket included.

Fits Touring 2017 to present and Trike 2017 to present

- 757900 RSD Sector Milwaukee Eight Touring & Trike cam cover

Fits Softail 2018 to present

- 757901 RSD Sector Milwaukee Eight Softail cam cover



CLUTCH BASKET BEARING FOR PERFORMANCE CLUTCHES



Sealed bearing for non-stock High Performance clutch basket.

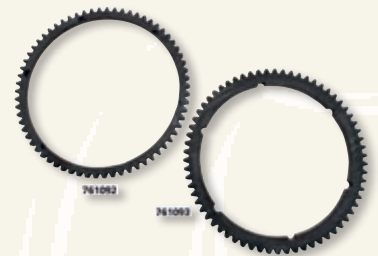
Fits American Prime Competition Master Clutch and Primo/Rivera Pro-Clutch (1018-0015)

- 760908 Clutch bearing, 1.375" x 2.750" x 1.0625" (34.93 x 69.85 x 27.09mm)



IMPORTANT INFORMATION

Due to the wide application and fitting variations of primary and final belts, Zodiac can not accept any claim for warranty as, no matter how long they have been used and no matter what the defect is, belts are not covered by any manufacturer warranty. To avoid any complications we suggest that belts should be installed by a qualified mechanic.



STARTER RING GEAR FOR BDL BELT DRIVE



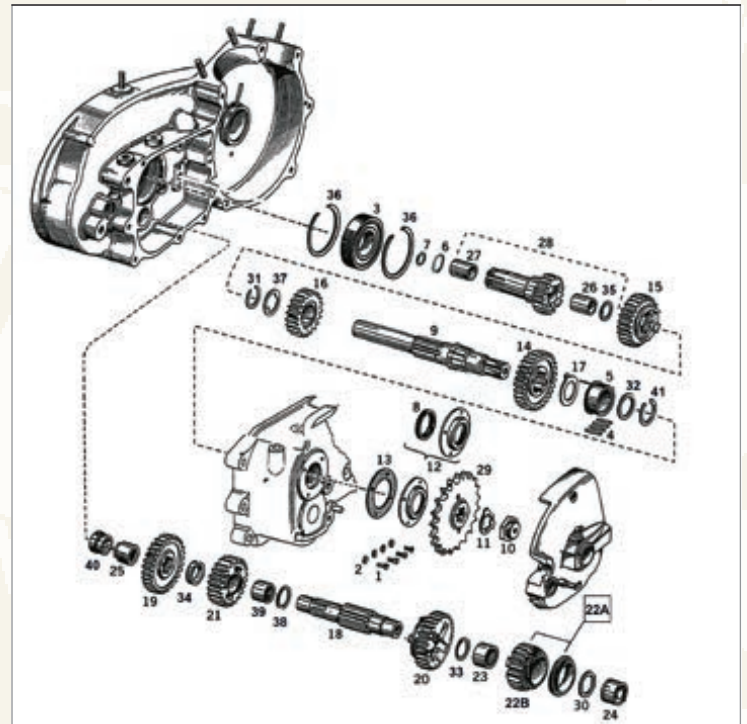
Replacement ring gears for electric start BDL belt drives.

Fits BDL 46 and 47 tooth belt drive clutch baskets. Also fits BDL chain drive clutch baskets

- 761092 BDL SG-1 starter ring gear, 66 tooth, 187.3mm inner diameter

Fits BDL 68, 72 and 76 tooth belt drive clutch baskets

- 761093 BDL SG-2 starter ring gear, 66 tooth, 174.6mm inner diameter

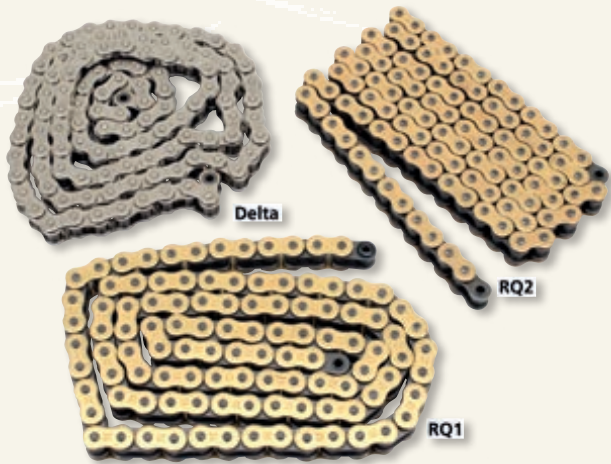


TRANSMISSION PARTS FOR 4-SPEED SPORTSTER

Transmission parts for 4-speed Sportsters from 1954 thru 1990. Zodiac gears and shaft are made from top quality alloy steel, machined with perfection within OEM specifications for a perfect fit, long wear and are stronger than stock. Andrews gears and shafts are shot peened for maximum durability.

Quantities marked with * are sold to dealers in 5, 10 or 25-packs

ZPN	Description	Application	OEM
9 735188	Main shaft, V-Twin Mfg.	late 1984-1990	35036-84A
18 735187	Countershaft, V-Twin Mfg.	late 1984-1990	35613-84



TSUBAKI MOTORCYCLE CHAIN FOR HARLEY-DAVIDSON



Advanced technology motorcycle chain from the world's largest chain manufacturer. Applying knowledge gained from racing, Tsubaki has designed and manufactured a superior chain to go the distance. Tsubaki chains have been engineered to exacting standards to guarantee long life and smooth operation for any ride or distance. Tight precision assembly withstands high impact and resists kinking. The chain has perfectly cylindrical bushings and is pre-stressed and pre-stretched for decreased initial elongation and increased wear life while the quad-staked riveting of the pin heads ensure maximum resistance to push-out force. Tsubaki chains are competitively priced and are backed by full warranty. RQ1 and RQ2 chains come with a rivet style master link with hollow end pins that make riveting easy. This is because even a poorly riveted link is way stronger than a clip style link. Consequently, Tsubaki nor Zodiac accept any liability for the use of a clip style master link.

RQ2 530 Series gold colored 0-ring chain

For use up to 150 BHP

- 711789** RQ2 530 series chain, 104 links
- 711790** RQ2 530 series chain, 106 links
- 711791** RQ2 530 series chain, 110 links
- 711792** RQ2 530 series chain, 112 links
- 711793** RQ2 530 series chain, 120 links
- 711795** RQ2 530 series chain, 130 links
- 711759** RQ2 530 series chain, replacement rivet link
- 711758** RQ2 530 series chain, clip style master link

RQ1 530 Series gold colored 0-ring chain

For use over 150 BHP

- 711784** RQ1 530 series chain, 104 links
- 711785** RQ1 530 series chain, 106 links
- 711786** RQ1 530 series chain, 110 links
- 711787** RQ1 530 series chain, 112 links
- 711788** RQ1 530 series chain, 120 links
- 711794** RQ1 530 series chain, 130 links
- 711757** RQ1 530 series chain, replacement rivet link
- 711756** RQ1 530 series chain, clip style master link

Delta Series Self-Lubricating Nickel Plated chain

For use up to 85 BHP

- 235162** Delta 530 series chain, 110 links
- 235163** Delta 530 series chain, 120 links
- 711844** Delta 530 series chain, 130 links
- 235164** Delta 530 series chain, clip style master link



REAR WHEEL SPROCKET LOCK



This chrome two piece lock ring is designed to be used on all Big Twin and Sportster with a 5 bolt pattern on the rear sprocket or pulley. Installation ensures a positive retention on the bolts and will not let them back out. Works on all models with 5/8" hex head bolts and cast alloy wheels.

Fits Big Twin 1973-1984, FXR 1984-2000, XL and XR Sportster 1979-2022, Dyna 1991-2017, Softail 1984-2017 and Touring 1984-2007

- 735197** Rear sprocket lock ring, chrome
- 735198** Rear sprocket lock ring, black



STOCK REPLACEMENT SPORTSTER BELT PULLEYS



Direct bolt-on replacement front final belt drive pulleys, made exactly to OEM specifications.

Fits Sportster 1986-1990

- 735196** Front, 27 tooth (OEM 40256-89)

Fits Sportster 1991-2003

- 700491** Front, 27 tooth (OEM 40285-91B)
- 753528** Front, 28 tooth
- 753529** Front, 29 tooth (OEM 40202-91)

Fits Sportster 2004-2022 and gives 10mm offset in 1991-2003 models

- 740562** Front, 28 tooth, XL883 and XR1200 (OEM 40379-04)
- 740563** Front, 29 tooth, XL1200 (US domestic) (OEM 40409-04)
- 740564** Front, 30 tooth, XL1200 (HDI International export) (OEM 40380-04)



REPLACEMENT CUSH DRIVE DAMPENER RUBBERS



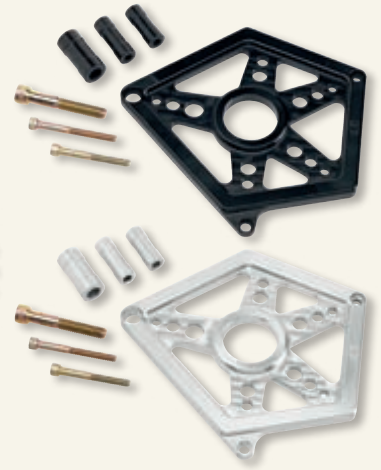
Stock replacement rubber dampener for the rear wheel pulley.

Fits Touring 2009 to present and Street 2015-2020

- 782685** Cushdrive rubber, standard, V-Twin Mfg. (OEM 40278-09)
- 789485** Cushdrive rubber, 25% stiffer than stock, V-Twin Mfg. (OEM 40278-09)

Fits Pan America and RH Sportster 2021 to present

- 769317** Cushdrive rubber, USA made (OEM 42200212)
- 735195** Cushdrive rubber, V-Twin Mfg. (OEM 42200212)



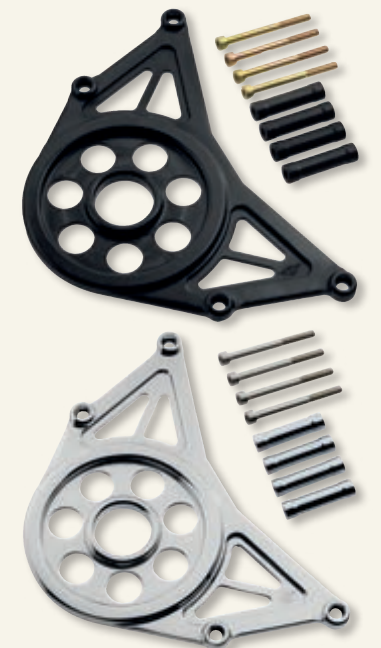
JOKER MACHINE SPROCKET COVERS FOR SPORTSTER



CNC machined open style billet aluminum covers are way lighter than the heavy stock cast piece and come complete with screws. Made in the USA by Joker Machine.

Fits XL Sportster 2004-2022

- 768163** Black anodized
- 768164** Clear anodized



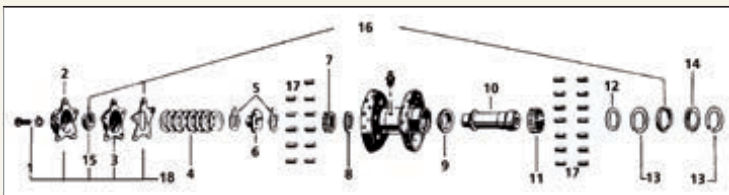
JOKER MACHINE SPROCKET COVERS FOR INDIAN SCOUT



Expose the parts of your motor that are worth being seen. Indian worked so hard on a beautifully designed motor, then covered it with a protector that blocks it all. Pulley Cover matches and accentuates lines of your bike while remaining minimal. CNC machined by Joker Machine in the USA from 6061 billet aluminum. Mounting hardware included.

Fits all Indian Scout 2015 to present

- 768165** Black anodized
- 768166** Chrome



STAR HUB REPLACEMENT PARTS



Superb quality replacement parts for the Star wheel hub, as used on 61", 74" and 80" models 1936-1957 front and rear, W-models 1937-1952 rear and Servi-Cars 1941-1957 front. Unless differently indicated these parts are Genuine Zodiac.

- 148086** Complete Star hub cover kit with chrome outer cover, Genuine Zodiac
- 789689** **NEW** Complete Star Hub rebuild kit with black parkerized outer cover, V-Twin Mfg.
- 735098** **NEW** Complete Star Hub rebuild kit with chrome outer cover, V-Twin Mfg.

1. **148076** Hub cover screw/lock washers, set of 5 (OEM 050/2756 & 0363/7230)
2. **148071** Outer cover, chrome (OEM 3972-35/43566-35A)
3. **148070** Inner cover, 1955-style, retrofits to older models (OEM 43574-55, also replaces 43574-35)
4. **148079** Adjusting shims 0.002" (OEM 43560-35) 50 pack
5. **148078** Thrust washer thick (OEM 43563-35)
6. **148077** Thrust bearing sleeve (OEM 43556-35)
7. **148080** Retainer and roller assy (OEM 24750-30 or 24721-30 with 12x 9220A)
7. **760027** Retainer and roller assy, Eastern (OEM 24750-30 or 24721-30 with 12x 9220A)
8. **735097** **NEW** Thrust washer, V-Twin Mfg. (OEM 3982-39, 43552-39)
9. **148082** Bearing collar (OEM 43561-39)
10. **148083** Roller bearing sleeve (OEM 43550-35)
11. **148084** Retainer and roller assy (OEM 43778-35 & 9220) Brake side

12. **745981** Brake side trust washer, Samwel (OEM 43558-39)
12. **745982** Brake side trust washer, Eastern USA, 5 Pack (OEM 43558-39)
13. **148087** Star hub thrust washer lock ring, 10 pack (OEM 43554-35)
14. **148088** Cork washer retainer (OEM 43564-35) 25 pack
15. **148089** Cork washer small (OEM 43570-35) 10 pack
16. **027508** Gasket and cork washer kit (OEM 43570-35 & 43571-35 & 43576-31)
16. **239987** Gasket and cork washer kit, Colony (OEM 43570-35 & 43571-35 & 43576-31)
17. **234645** Bearing rollers, Std., 0.250"x0.490", Eastern USA, 28 pack (OEM 2289-25 & 9220A)
17. **234648** Bearing rollers, +.0002", Eastern USA, 28 pack (OEM 2289-25D & 9221A)
17. **234649** Bearing rollers, +.0004", Eastern USA, 28 pack (OEM 2289-25F & 9222A)
17. **234650** Bearing rollers, +.0006", Eastern USA, 28 pack (OEM 2289-25H & 9223A)
17. **234651** Bearing rollers, +.0008", Eastern USA, 28 pack (OEM 2289-25KA & 9224A)
17. **234652** Bearing rollers, +.0010", Eastern USA, 28 pack (OEM 2289-25MA & 9225A)
17. **234653** Bearing rollers, +.0020", Eastern USA, 28 pack



JOKER MACHINE PULLBACK RISERS



These risers give a 1 1/2" (3.8cm) pullback with a 2 1/2" (6.4cm) rise and are made for 1" handlebars. Risers fit standard Harley-Davidson upper triple trees that have 3 1/2" (8.9cm) center-to-center riser holes. Risers are threaded 1/2-13" UNC and are CNC machined out of solid 6061-T6 bar stock for maximum strength.

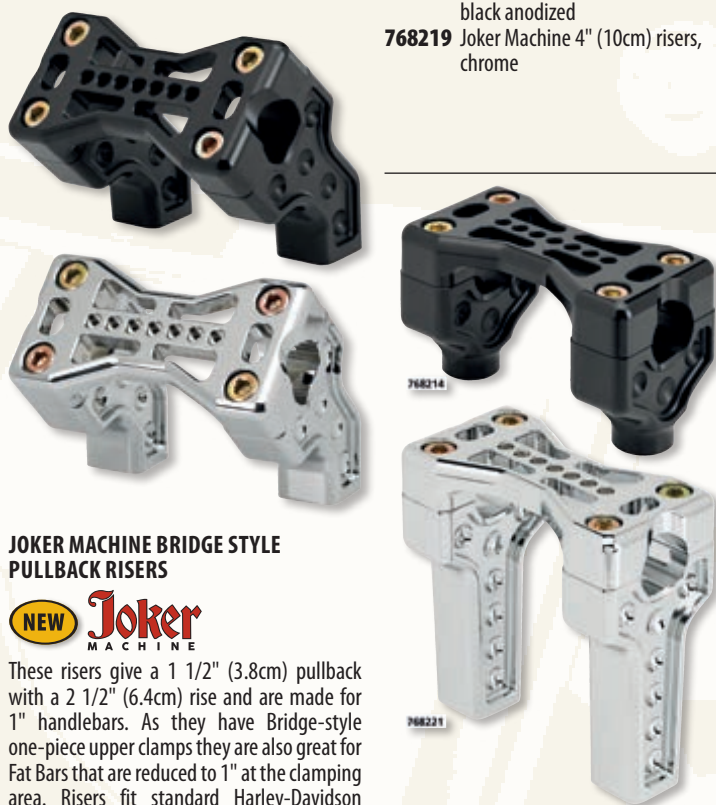
- 768222** Joker Machine pullback risers, black anodized
- 768223** Joker Machine pullback risers, chrome

JOKER MACHINE RISERS



These risers are made for 1" handlebars. Risers fit standard Harley-Davidson upper triple trees that have 3 1/2" (8.9cm) center-to-center riser holes. Risers are threaded 1/2-13" UNC and are CNC machined out of solid 6061-T6 bar stock for maximum strength.

- 768216** Joker Machine 2" (5cm) risers, black anodized
- 768217** Joker Machine 2" (5cm) risers, chrome
- 768218** Joker Machine 4" (10cm) risers, black anodized
- 768219** Joker Machine 4" (10cm) risers, chrome



JOKER MACHINE BRIDGE STYLE PULLBACK RISERS



These risers give a 1 1/2" (3.8cm) pullback with a 2 1/2" (6.4cm) rise and are made for 1" handlebars. As they have Bridge-style one-piece upper clamps they are also great for Fat Bars that are reduced to 1" at the clamping area. Risers fit standard Harley-Davidson upper triple trees that have 3 1/2" (8.9cm) center-to-center riser holes. Risers are threaded 1/2-13" UNC and are CNC machined out of solid 6061-T6 bar stock for maximum strength.

- 768224** Joker Machine Bridge Clamp pullback risers, black anodized
- 768225** Joker Machine Bridge Clamp pullback risers, chrome

JOKER MACHINE BRIDGE CLAMP RISERS



These risers are made for 1" handlebars. As they have Bridge-style one-piece upper clamps they are also great for Fat Bars that are reduced to 1" at the clamping area. Risers fit standard Harley-Davidson upper triple trees



SHINKO STEALTH RADIAL TIRES



The Stealth Radial has a slick/dimple design great for production racing, drag racing, or serious sport riding. They feature a soft compound for rapid warmup and give a racing slick-like performance, W speed rated (168mph, 270km/h), Aramid belted and are DOT approved.

Shinko Stealth Radial rear tires

- 749443** 180/55ZR17-73W Shinko Stealth Radial
- 749442** 180/55ZR18-74W Shinko Stealth Radial



that have 3 1/2" (8.9cm) center-to-center riser holes. Risers are threaded 1/2-13" UNC and are CNC machined out of solid 6061-T6 bar stock for maximum strength.

768214 Joker Machine 2" (5cm) Bridge Clamp risers, black anodized

768215 Joker Machine 2" (5cm) Bridge Clamp risers, chrome

768220 Joker Machine 4" (10cm) Bridge Clamp risers, black anodized

768221 Joker Machine 4" (10cm) Bridge Clamp risers, chrome



HAND SHIFTER KNOBS



Hand shifter knobs are also called jockey shifter knobs. They have 3/8-24 UNF internal thread unless differently indicated. You can of course use them for many other applications or just decoration.

- A. 735174** Stock style shifter knob, black (OEM 2205-31/33745-31)
- B. 735175** Brass skull, 3 1/2" (8.9cm)
- C. 735176** Knob with windowed frame to insert the picture you like most
- D. 735177** Police badge
- E. 735178** Metropolitan Police badge
- F. 735179** Black with gold army design inlay
- G. 735180** Flathead engine, 2 5/16" (5.9cm)
- H. 735181** Knucklehead engine, 2 7/8" (7.3cm)
- I. 735182** Panhead engine, 2 3/4" (7cm)
- J. 735183** Late Shovelhead engine, 2 5/8" (6.7cm)
- K. 735184** Evolution Big Twin engine, 2 3/4" (7cm)
- L. 735185** Brass skull, not threaded, not drilled. 2 1/2" (6.4cm) long, 2" (5.1cm) high
- M. 735186** Smooth brass skull, 2 1/16" (5.2cm)



ROLAND SANDS DESIGN SECTOR RISERS FOR 1 1/8" HANDLEBARS



The RSD Sector riser system offers an innovative solution for riders looking to elevate the comfort and control of their motorcycle by dialing in their hand controls position.

Features:

- Machined from 6061 Aluminum
- Black anodized finish
- Available with individual or one-piece top bar clamps
- Bar clamp size 1 1/8" (28.6mm)
- Black stainless riser system hardware included
- Designed, engineered, and manufactured in Long Beach California, USA
- Fits any HD with 3 1/2" on center riser holes in the triple tree, riser bolts not included

Riser kits with individual top clamps

- 757904** 2" (5.1cm) rise
- 757906** 3" (7.6cm) rise
- 757908** 5" (12.7cm) rise
- 757911** 8" (20.3cm) rise
- 757913** 10" (25.4cm) rise

Riser kits with one-piece top clamps

- 757905** 2" (5.1cm) rise
- 757907** 3" (7.6cm) rise
- 757909** 5" (12.7cm) rise
- 757910** 6" (15.2cm) rise
- 757912** 8" (20.3cm) rise
- 757914** 10" (25.4cm) rise
- 757915** 12" (30.5cm) rise

Instrument housing kits

- 757916** Fits Road Glide 2015 to present
- 757917** Fits FXBB & FXBBS Street Bob 2018 to present, FXBR & FXBRS Breakout 2018 to present, FXDRS 2019-2020, FXST Standard 2020 to present, FXRST Low Rider El Diablo 2022 and FXLRST Low Rider ST 2022 to present



HAND LEVERS FOR VINTAGE MODELS



Perfect replica from the hand levers found on all 1941-1954 45CI Solo, 1941-1964 Big Twin and 1941-1950 Servi-Car. Features the correct casting marks and can be used left or right.

- 734942** **NEW** Replica plain aluminum hand brake lever with bracket, V-Twin Mfg. (OEM 4149-41, 45002-41)
- 734951** **NEW** Chrome hand brake lever with bracket, V-Twin Mfg. (OEM 4149-41, 45002-41)
- 782927** Black chrome hand lever with bracket, Samwel (OEM 4149-41N & 45002-41)
- 782928** Army green a.k.a. Olive Drab hand lever with bracket, Samwel (OEM 4149-41M)



RICK'S CLASSIC ADJUSTABLE BRAKE AND CLUTCH LEVER SETS



Adjustable hand levers with approval in "Classic" design offer a perfect ergonomic fit for every hand, guaranteeing relaxed riding in all situations. The distance between handlebar grip and lever can be adjusted in six positions to match your finger length. Lever pressure can be adjusted via an easy to use adjustment button at the pivot point. They are approximately the same length as the original levers. The lever bearing has noticeably less leeway than any stock lever. Most riders will also appreciate the additional lever power when riding in stop-and-go traffic. CNC machined in Germany.

Fits all XL Sportster 1996-2003

770140 Rick's Classic adjustable brake & clutch lever set, black

Fits all Dyna 80, 88, 96 & 103 CI 1996-2017 (cable clutch)

770140 Rick's Classic adjustable brake & clutch lever set, black

Fits all Softail 1996-2014 (cable clutch)

770140 Rick's Classic adjustable brake & clutch lever set, black

Fits all Softail 2015-2017 (cable clutch)

770148 Rick's Classic adjustable brake & clutch lever set, black

Fits FLSS Softail Slim S, FLSTFBS Fat Boy S & FXSE Pro Street Breakout 2016 (hydraulic clutch)

770150 Rick's Classic adjustable brake & clutch lever set, black

Fits FLSS Softail Slim S, FLSTFBS Fat Boy S & FXSE Pro Street Breakout 2017 (hydraulic clutch)

770151 Rick's Classic adjustable brake & clutch lever set, black

Fits all XL & XR Sportster 2004-2013

770141 Rick's Classic adjustable brake & clutch lever set, black

Fits all XL Sportster 2014-2022

770142 Rick's Classic adjustable brake & clutch lever set, black

Fits all V-Rod 2002-2005 (hydraulic clutch)

770146 Rick's Classic adjustable brake & clutch lever set, black

Fits all V-Rod 2006-2017 (hydraulic clutch)

770147 Rick's Classic adjustable brake & clutch lever set, black

Fits all Milwaukee Eight Softail 2018 to present (cable clutch)

770149 Rick's Classic adjustable brake & clutch lever set, black

Fits Touring & Trike 2008-2013 and 2014-2016 FLHR & FLHRC Road King 2014-2016 (cable clutch)

770143 Rick's Classic adjustable brake & clutch lever set, black

Fits Milwaukee Eight Touring 2017-2020 (hydraulic clutch)

770144 Rick's Classic adjustable brake & clutch lever set, black

Fits all Milwaukee Eight Touring 2021 to present (cable clutch)

770145 Rick's Classic adjustable brake & clutch lever set, black



JOKER MACHINE BRAKE AND CLUTCH LEVERS FOR INDIAN SCOUT



Joker Machine levers are USA CNC machined from 6061 billet aluminum and feature finger indents for a comfortable grip and a hard black or chrome finish. They are installed using the stock mounting hardware.

Fits Scout 2015-2016

768243 Brake lever, black (OEM 2205842)

768245 Clutch lever, black (OEM 5139545)

768244 Brake lever, chrome (OEM 2205842)

768246 Clutch lever, chrome (OEM 5139545)

Fits Scout 2017-2021

Note: Removing the brake piston actuator from the stock lever on 2017-2021 models might be difficult or impossible. Indian does not sell individual actuators, this is why we recommend to order one from the list below.

768247 Brake lever, black (OEM 2208228)

768251 Brake piston actuator, black

768249 Clutch lever, black (OEM 2208229)

768248 Brake lever, chrome (OEM 2206177)

768252 Brake piston actuator, chrome

768250 Clutch lever, chrome (OEM 2206390)



JOKER MACHINE FRONT MASTER CYLINDER COVERS FOR INDIAN SCOUT



Covers are CNC machined from 6061 billet aluminum and sport a hard black or chrome finish. They come complete with screws and install using the OEM rubber gasket.

Fits all Indian Scout 2015-2024

768253 Finned black

768254 Black with highlighted fins

768255 Finned chrome

768256 Smooth black

768257 Smooth chrome

768258 Warrior black

768259 Warrior chrome



ROLAND SANDS DESIGN SECTOR PEGS

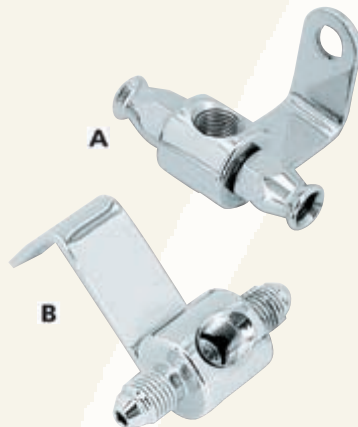


Take control of your ride with the fully adjustable Sector Foot Pegs by Roland Sands Design. A cross between a moto style foot peg and a mini-floor board. These pegs

feature unique details that highlight the overall shape while complimenting the design of this product. Foot pegs also include a separate clevis that allows for a full adjustment to dial in your foot positioning. Pegs have a specialty coating that does not allow oil and grease to adhere and a proprietary abrasion and UV resistant film to protect surface from yellowing, marring or breakage.

Fits Softail Sport Glide, Street Bob, Breakout, FXDR, Fat Bob, Low Rider and FXST Standard 2018 to present

757902 RSD Sector driver pegs, pair, black



GOODRIDGE REAR BRAKE LINE TEES



Custom rear brake tees that directly accept Goodridge braided brake lines plus your brake light switch. Come complete with socket nuts and olives. Available for both the Goodridge build-yourself and Goodridge's approved brake lines.

For use with classic Goodridge brake lines with olives and socket nuts

A. 232128 Fits Sportster 1977-2013, Stainless Steel

For use with Goodridge approved brake lines with AN-3 fittings

B. 757784 **NEW** Fits 1984-1999 Softail, Stainless Steel



JOKER MACHINE FOOT PEGS FOR INDIAN SCOUT & VICTORY OCTANE



These pegs are fully CNC machined from solid 6061-T6 bar. They are a 2-piece, super strong, yet light-weight construction, providing a wider foot surface for a comfortable ride. The serrated surface provides a good bite to the bottom of your shoe. The full 360 degree peg rotation makes them perfect for any application. Pitch adjustment screw always keeps them in a good riding position. These pegs are sold in pairs and fit all Indian Scout 2015 to present and Victory Octane 2017.

Long serrated pegs, 4 1/2" long, 2 1/2" wide and 1" thick (11.4 x 6.35 x 2.5cm)

- 768267** Driver pegs, natural aluminum
- 768268** Driver pegs, hard black anodized
- 768269** Passenger pegs, natural aluminum
- 768270** Passenger pegs, hard black anodized

Short serrated pegs, 3 5/16" long, 2 1/2" wide, 1" thick (8.4 x 6.35 x 2.5cm)

- 768271** Driver pegs, natural aluminum
- 768272** Driver pegs, hard black anodized
- 768273** Passenger pegs, natural aluminum
- 768274** Passenger pegs, hard black anodized

Narrow serrated pegs, 4 3/16" long, 1 1/2" wide, 1 3/16" thick (10.6 x 3.8 x 3cm)

- 768275** Driver pegs, natural aluminum
- 768276** Driver pegs, hard black anodized
- 768277** Passenger pegs, natural aluminum
- 768278** Passenger pegs, hard black anodized

Heel style serrated pegs, 4 3/16" long, 3 7/8" wide, 1 3/16" thick (10.6 x 9.8 x 2cm)

- 768279** Driver pegs, natural aluminum
- 768280** Driver pegs, hard black anodized
- 768281** Passenger pegs, natural aluminum
- 768282** Passenger pegs, hard black anodized

Stubby short serrated pegs, 3" long, 1 1/2" wide, 1 3/16" thick (7.5 x 3.8 x 2cm)

- 768283** Driver pegs, natural aluminum
- 768284** Driver pegs, hard black anodized
- 768285** Passenger pegs, natural aluminum
- 768286** Passenger pegs, hard black anodized

Bear Claw style serrated pegs, 4.21" long, 2.87" wide, 0.8" thick (20.7 x 7.3cm x 2cm)

- 768291** Driver pegs, natural aluminum
- 768292** Driver pegs, hard black anodized
- 768293** Passenger pegs, natural aluminum
- 768294** Passenger pegs, hard black anodized

Racing style pegs, 3 1/4" long, 1 1/4" wide (8.3 x 3.2cm)

- 768295** Driver pegs, natural aluminum
- 768296** Driver pegs, hard black anodized
- 768297** Passenger pegs, natural aluminum
- 768298** Passenger pegs, hard black anodized



All driver and passenger pegs are sold in pairs. Standard male mount foot pegs do NOT fit rider and passenger position on all 2018-up Softail. Rider pegs for 2018-up Softail also fit the rider and passenger position on LiveWire, 2021-up RA Pan America and 2021-up RH Sportster. Standard male mount foot pegs do NOT fit the rider position on: FXCW & FXCWC Rocker 2008-2011 / FXS Black Line 2011-2013 / FXSB, FXSBSE & FXSE Breakout 2013-2017 / XG500 & XG750 Street 2015-2020 / XL883L Low & SuperLow 2007-2020 / XL883N Iron 2007-2022 / XL1200C, XL1200CA & XL1200CB Custom 2011-2020 / XL1200CX Roadster 2016-2020 / XL1200N Nightster 2007-2012 / XL1200NS Iron 2018-2021 / XL1200T SuperLow 2007-2020 / XL1200V Seventy-Two 2012-2016 / XL1200X Forty-Eight 2007-2022 / XL1200XS Forty-Eight Special 2018-2020 / XR1200 & XR1200X 2008-2013.



CIRO CHICANE FLOORBOARDS



Floorboards can define the look of a motorcycle. The Chicane Floorboards grab your eye immediately with their design, but they are not just a pretty face. Engineered for ultimate rider comfort and performance in all road conditions. These floorboards redefine floorboard performance. The driver boards are 3 1/2" (8.9cm) longer than stock footboards, feature vibration dampening EPDM rubbers and six different mounting positions including 1/2" forward, 1/2" back and 1/2" outwards. The front toe section is slightly raised for comfort. Passenger board inserts fit OEM board pans.

Driver floorboards replace the stock boards on:

- Touring 1980 to present
- Trike 2009 to present
- FL Softail 1986 to present
- FLD Switchback 2012-2016
- 777357** Chicane driver footboards, pair, black
- 777358** Chicane driver footboards, pair, chrome

Passenger board inserts fit OEM boards on Electra Glide, Ultra, Road King, Road Glide and Tri Glide 2006 to present

- 777363** Chicane passenger board inserts, pair, black (OEM 50606-06)
- 777364** Chicane passenger board inserts, pair, chrome (OEM 50606-06)



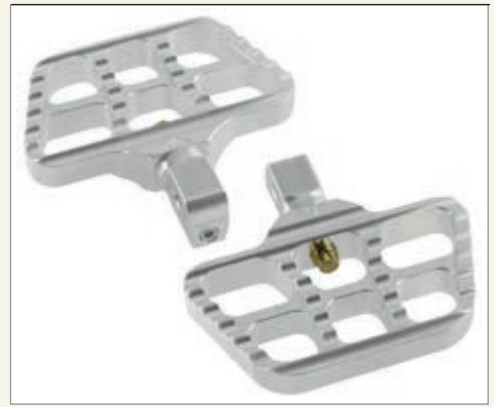
JOKER MACHINE REAR MASTER CYLINDER COVERS FOR INDIAN SCOUT



Covers are CNC machined from 6061 billet aluminum and sport a hard black or chrome finish. They come complete with screws and install using the OEM rubber gasket.

Fits all Indian Scout 2015 to present

- 768260** Fitted black
- 768261** Black with highlighted fins
- 768262** Fitted chrome
- 768263** Smooth black
- 768264** Smooth chrome
- 768265** Warrior black
- 768266** Warrior chrome



JOKER MACHINE MINI FOOTBOARDS FOR INDIAN SCOUT & VICTORY OCTANE



These mini floorboards are fully CNC machined from solid 6061-T6 bar. They are a 2-piece, super strong, yet light-weight construction, providing a wider foot surface for a comfortable ride. The serrated surface provides a good bite to the bottom of your shoe. The full 360 degree peg rotation makes them perfect for any application. Pitch adjustment screw always keeps them in a good riding position. These pegs are sold in pairs and fit all Indian Scout 2015 to present and Victory Octane 2017.

Mini boards, 5" long, 3" wide and 5/8" thick (12.7 x 7.6 x 2.5cm)

- 768287** Driver mini boards, natural aluminum
- 768288** Driver mini boards, hard black anodized
- 768289** Passenger mini boards, natural aluminum
- 768290** Passenger mini boards, hard black anodized



The new DOT 4 (as used in the late models Harley-Davidson) can be mixed with the old DOT 4 without any problem, even with the older DOT 3. The new DOT 4 CAN NOT BE MIXED WITH DOT 5. DOT 5 is a Silicon based fluid that has its own formula. This also means that DOT 4 can not be used in a system that has been on DOT 5 (and vice versa) unless the whole system has been taken apart and cleaned. It also needs new seals and cups before the DOT 4 can be used. Cleaning the parts with cloth or paper is also no option, the parts have to be very well cleaned with brake cleaner! (ZPN748043 or similar).



DYNOJET QUICK SHIFTER KIT



Experience the thrill of super-fast up-shifts without pulling the clutch. This delivers a smoother, faster ride without sacrificing speed or control. Install this kit in place of your stock shift rod and simply connect to your Power Commander VI (PC-6) module.

785060 Quick Shifter kit for CVO Touring 2017 to present



LATE STYLE SPRINGER PARTS



FX and FL Springer Softail forks have many parts in common but rigid fork, spring fork, rockers and caliper mounts are different. FXSTS, FXSTSB and FXSTSE forks have the caliper mounts on the right side, where as FLSTS and FLSTSC have the caliper mounts on the left.

Fits FXSTS, FXSTSB & FXSTSE 1988-2009

735193 Rocker rebuild kit (OEM 45655-88, 45659-88, 45660-88A, 45662-88, 45663-88A, 7627)

Fits FLSTS & FLSTSC 1997-2007

735194 Rocker rebuild kit (OEM 45655-88, 45659-88, 45660-88A, 45662-88, 45663-88A, 7862, 7880)

735169 Rockers, pair, black (OEM 45629-97 & 45631-97)

735170 Rockers, pair, chrome (OEM 45629-97 & 45631-97)

Fits FXSTS, FXSTSB & FXSTSE 1988-2009 and FLSTS & FLSTSC 1997-2007

735171 Rocker bearing kit (OEM 9139, 9140 & 9141)

758579 Chrome acorn nuts, spring rod mounting, pair (OEM 45567-88)

735167 Basic hardware kit, spring mounting. Contains 2 spring rod bushings, 4 travel bumpers and 4 spring seats (OEM 45935-88, 45936-88, 45937-88)

735166 Complete hardware kit, spring mounting (OEM 45567-88, 45935-88, 45936-88, 45937-88, 46056-88, 46057-88, 46060-88, 7680W, 7959)

735165 Complete spring kit, chrome (OEM 46053-88, 46054-88, 46055-88)



JOKER MACHINE FOOT CONTROL EXTENSION KIT FOR INDIAN SCOUT



Stretch your legs out and enjoy the ride. Extension kit moves the driver foot pegs, shift- and brake pedal 2 1/2" (6.3cm) forward for a more comfortable ride. Cut from steel sheets for extra strength, yet thinner than other aftermarket plates. Kit comes complete with everything needed to mount for a fast installation.

Fits Scout Bobber, Bobber Twenty & Bobber Sixty 2018-2024 as well as Rogue & Rogue Sixty 2022-2024

768303 Driver foot control extension kit



FRONT FORK DAMPERS



Stock replacement hydraulic units come with installed piston rings.

735125 **NEW** Fits all 1 5/8" (41mm) in Touring 1997-2008, set of two, V-Twin Mfg. (OEM45891-97)



DAMPER TUBE SPRINGS FOR 41MM HARLEY SHOWA FORKS



Fits FL 1977-1984, FXWG 1980-1986, Touring 1984-1996, Touring 1998-2001, FXST, FXSTB & FXSTC 1984-2005 and FXDWG 1993-1999

094033 Damper tube springs, pair, Genuine Zodiac (OEM 45855-77)

Fits FXDWG 2000-2005, FLD 2012-2016, FLSTC, FLSTF, FLSTN 1986-2017, Touring 1997, Touring 2002-2013 and Trike 2009-2013

735126 **NEW** Damper tube springs, V-Twin Mfg., 10-pack (OEM 45933-86)



UPPER TREES FOR LATE STYLE SPRINGER FORKS



FX and FL Springer Softail forks have many parts in common but apart from the rigid fork, spring forks, rockers and caliper mounts also the upper trees are not the same as these have a different offset.

Fits FXSTS, FXSTSB & FXSTSE 1988-2006

A 735172 Top triple tree, chrome (OEM 45473-88)

Fits FLSTS & FLSTSC 1997-2007

B 735173 Top triple tree, chrome (OEM 45491-97)



FORK TINS FOR SOFTAIL



Fork cover kits replace the stock satin fork covers on FL Softail and are available with the three ribs left and right of your headlight, like stock, or completely smooth. Use stock hardware or order hardware kit separately.

Fits Heritage, Nostalgia & Fat Boy 1986-2017 and Deluxe 2005-2017

Not compatible with a spotlight bar as stock on FLSTC Heritage Classic

094090 Stock FLST style fork cover kit, chrome, Genuine Zodiac (OEM 67890-91C)

735095 Stock FLST style fork cover kit, chrome, V-Twin Mfg. (OEM 67890-91C)

795156 Smooth FLST fork cover kit, chrome, V-Twin Mfg. (OEM 66440-05)

795155 Smooth FLST fork cover kit, black, V-Twin Mfg.

783177 Mounting screw kit, chrome button heads, Colony



HARDTAIL FRAME FOR RUBBER MOUNT SPORTSTER ENGINE



Rigid frame with 30 degree rake and no stretch takes rubber mount Sportster XL engine 2004-2022.

736932 Hardtail frame



BURLY BRAWLER BAR KITS



Burly designed these sleek and stylish crash bars for newcomers and veterans alike. The bars feature replaceable Delrin sliders for a quality look that protects the bike if there's ever a time the bike goes down. Bars have 7 Gauge mild steel gussets, are TIG welded for durability and have a black powder coat finish.

Fits XL and XR Sportster 2004-2022 with mid-mount controls, ABS equipped models may require re-routing of the brake lines

763600 Front and rear Brawler bar kit for Sportster



Fits Dyna 2006-2017 with mid-mount controls

763599 Front and rear Brawler bar kit for Dyna



Fits FXBB & FBBS Street Bob, FXLR & FXLRS Low Rider 2018 to present and FXST Standard 2020-2024. Also fits FXFB & FXFBS Fat Bob 2018 to present and FXDRS 2019-2020 with aftermarket exhaust system. Bikes with OEM style

saddlesbags require the separate purchase of ZPN 763694 bracket relocation kit

Note: Rear sliders cannot be combined with passenger pegs. FXBB & FXBBS Street Bob and FXDRS must be installed with aftermarket exhaust system

763601 Front and rear Brawler bar kit for Milwaukee Eight Softail

763692 **NEW** Front Brawler bar for Milwaukee Eight Softail

763693 **NEW** Rear Brawler bar for Milwaukee Eight Softail

763694 **NEW** Optional saddlebag bracket relocation kit



Fits FLH Revival 2021, FLHP, FLHPE, FLHR, FLHRC & FLHRXS Road King, FLHT, FLHTC, FLHTCU, FLHTCUL, FLHTCUSE & FLHTP Electra Glide, FLHX & FLHXS Street Glide 2014 to present and FLHXSE Street Glide 2015-2022. Not suitable for Twin Cooled models

763602 Front and rear Brawler bar kit for Touring

763690 **NEW** Front Brawler bar for Touring

763691 **NEW** Rear Brawler bars for Touring



763603

763604

Replacement parts

763603 Front Delrin slider, each

763604 Rear Delrin slider, each



CVO-STYLE LIGHTED REAR FENDER FACIAS



Black painted or carbon-look ABS facias attach to your stock rear fender and close the gap between the fender and side bags. Features smoke lenses with US-style red leds for running light, brake light, turn signals and taillight functions. Comes pre-wired

and includes license plate bracket and rear reflector. Note that lighting carries no approval marks.

Fits all standard Touring with OEM 2014-style hard saddlebags

770741 Rear fender facia set, gloss black

770740 Rear fender facia set, carbon look



BOBBED GAS TANK FOR TOURING



Bobbed gas tank takes 4.0 US Gallon (15 liters) and has a left side petcock bung. The tank has an upper length of 47cm, bottom length 41cm, front width 34cm and rear width 23cm. Gas tank comes with tank divider panel and speedo cable. Complete kit also includes a pair of 1983-1995 style ratcheting screw-in gas caps, cast dash panel, dash base, 2240:60 speedo and six-post ignition switch.

Tank must be installed with a short style seat. Installation on 1980-1985 models requires drilling holes for the rear mount.

Fits carburetor equipped Touring 1980-1998

735191 Bobbed gas tank with divider panel and speedo cable

735192 Complete Bobbed gas tank kit



735192



- 780297** Magnetic oil tank drain plug, white plated, Samwel (OEM 2326-38 & 704)
- 780298** Oil tank drain plug, white plated, Samwel (OEM 2326-38/704)
- 782926** Banjo bolt with washers for the ventpipe, white plated (OEM 3572-36B, 63578-36)
- 012257** Oil/vent line adapter, zinc plated, Genuine Zodiac, set of 3 (OEM 3577-15/63533-15)
- 745900** White plated oil line, set of 3 (OEM 3571-37E/63510-37, 3571-38E/63507-38, 3572-37B/63571-38)
- 745901** Chrome oil line, set of 3 (OEM 3571-37E/63510-37, 3571-38E/63507-38, 3572-37B/63571-38)

GAS AND OIL TANK SET FOR 45CI



Perfect replicas from the left side gas tank and right side oil tank as found on all 45CI Solo and Servi-Car.

Fits 45CI Solo and Servi-Car 1937-1946

- 762635** Gas and oil tank set, Samwel (OEM 3501-41B, 3502-41B, 61209-41, 61237-41)
- 745311** NEW Gas and oil tank set, V-Twin Mfg. (OEM 3501-41B/61209-41, 3502-41B/61237-41)

Fits 45CI Solo 1947-1952 and Servi-Car 1947-1957

- 789555** Gas and oil tank set, V-Twin Mfg. (OEM 3501-47B/61209-47, 3502-47B/61237-37, 3501-51B/61209-51, 3502-51B/61237-51)



STOCK STYLE GAS TANKS FOR TOURING & TRIKE



Raw steel stock style gas tanks are great for crash repairs. Carefully check the tank for fitment on the motorcycle and test-fit fuel line, fuel pump, gas cap and dash cover before painting. Do not grind or sand the seams or joints. It is also suggested to pressure test and use a tank cleaner, tank conditioner and tank sealer to help stop leaks and prevent corrosion.

Fits Electra Glide, Street Glide, Road Glide 2008 to present

- 770747** Raw steel gas tank (OEM 61356-08)

Fits Road King 2008 to present, Freewheeler 2015 to present and FLHFB Electra Glide Highway King 2023

- 770748** Raw steel Road King tank, 2008-2019 style (OEM 61268-08, can also be used to replace late OEM 61000691 gas tank)



Tank Accessories

- 762649** Oil tank cap, chrome (OEM 3507-37 & 61104-37)
- 723131** NEW Chrome bolt with bushing for shifter hinge, Colony (OEM 2206-37/33775-37, 2206-47/33776-47, 2207-47/33778-47)
- 780092** Oil tank cap, army green, New Old Stock (OEM 3507-37N)
- 780241** Stickers "OIL", 1" x 5/16", set of 2
- 762647** Oil tank gauge rod, Samwel (OEM 3505-37 & 62631-37)



SHUT-OFF VALVE FOR VINTAGE MODELS



Very precise reproductions of the tank shut-off valves on many 1940-1965 models. Complete shut-off assemblies come with rod, cap knob, washers seals and hardware. Rebuild kits contain all the same except for the knob.

Complete shut-off valve assemblies

- 745911** Fits all 45CI WL 1940-1952 & all Servi-Car 1940-1954, black knob, Samwel
- 745908** Fits all 45CI WL 1940-1952 & all Servi-Car 1940-1954, chrome knob, Samwel
- 745912** Fits Big Twin 1941-1949, chrome knob, Samwel
- 735113** Fits Big Twin 1941-1949, chrome knob, V-Twin Mfg.
- 745910** Fits Big Twin 1950-1965, chrome knob, Samwel
- 745308** Fits Big Twin 1950-1965, brass knob, V-Twin Mfg.

Shut-off rebuild kits

- 735120** Fits WL 1941-1949, V-Twin Mfg.
- 735121** Fits Servi-Car 1941-1949, V-Twin Mfg.

Shut-off rods only

- 745909** Fits all 45CI WL 1940-1952 & Servi-Car 1940-1954, Samwel (OEM 3633-40/62032-40)
- 735115** Fits all 45CI WL 1940-1952 & Servi-Car 1940-1954, V-Twin Mfg. (OEM 3633-40/62032-40)
- 735114** Fits EL 1936-1952 & FL 1941-1965, V-Twin Mfg. (OEM 3633-41/62033-41)

Shut-off rod upper kit with replicas from all seven cups, washers, spacers, nut and spring

- 723138** Fits all Big Twin & Servi-Car 1940-1965 & all WL 1940-1952, Colony (OEM 3637-40/62051-40, 3636-40/62091-40, 4764-26/71804-26, 3635-40/6307, 3634-40/62094-40 & 018/2626)

Shut-off seats only

- 735117** Fits all EL, FL, G, UL & WL 1940-1949, V-Twin Mfg. (OEM 3639-40/62075-40)
- 735118** Fits all FL, G & WL 1950-1965, V-Twin Mfg. (OEM 3639-50/62075-50)



GAS TANKS

The zinc-chromate primer finish on some of our tanks is provided for the protection of the tanks during shipment and storage. It is not recommended as a primer finish for paint applications without proper surface preparation. As with any fuel tank, particularly one where custom paint is to be applied, all tanks must be pressure tested, then cleaned with tank cleaner and sealed with tank sealer before painting, to protect the final finish and prevent internal rust during winter storage. Fuel capacity is measured with tank in upright position, angle of parked bike will determine actual capacity of the fuel tank.

GAS CAP STYLES

Genuine Zodiac gas tanks including their brackets are made from the same or heavier gauge steel as genuine tanks, your guarantee for years and years of reliable service. Feel free to compare the weight of these quality products with cheap imitations.





GAS TANK BRAS

NEW

Protect your tank and paint. Tank bra is black vinyl and installs on the tank without tools using the attached elastic straps.

Fits XL Sportster 2004-2022

770750 Rear gas tank bra for 4 1/2" Gallon gas tank

Fits Touring 1997 to present

770749 Rear gas tank bra



ROLAND SANDS DESIGN SECTOR GAS CAP



Take your ride to the next level with the Roland Sands Design Sector Gas Cap. It features unique details that highlight the overall shape while complimenting the design of this product. The CNC machined billet aluminum cap has a specialty coating that does not allow oil and grease to adhere and a proprietary abrasion and UV resistant film to protect surface from yellowing, marring or breakage.

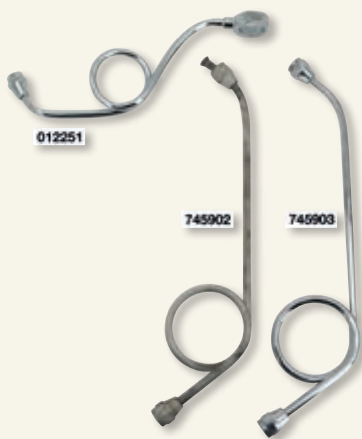


CHROME DASH PANEL EXTENSION FOR DYNA



Add that stretched look to your dash panel and fuel tank with this chrome extension. Covers the tank from the rear end of the dash cover to the rear tank mount. Comes with foam pad and required hardware.

Fits FXD35 2006, FXDC 2007-2011, FXDF 2008-2010 and FXDWG 2004-2008
736937 Dash panel extension kit (OEM 71282-04)



GAS LINES FOR VINTAGE MODELS



Replica steel tank-to-carburetor and tank-to-tank (also known as crossover) lines with a tin finish and fitted connector like stock. Tank-to-carb lines for Big Twin 1950-1965 also include the nuts and seals that originally had to be ordered separately. Selected lines also available in chrome.

Tank-to-carburetor lines for Sidevalve models

- 745902** White plated, 45CI 1942-1949, Samwel (OEM 3607-41M & 62354-42)
- 745903** Chrome, 45CI 1942-1949, Samwel (OEM 3607-41M & 62354-42)
- 758357** Tin finish, U, UL & ULH Flat-head 1937-1938, V-Twin Mfg. (OEM 3607-37)
- 758358** Tin finish, U, UL & ULH Flat-head 1939, V-Twin Mfg. (OEM 3608-39)
- 758359** Tin finish, U, UL & ULH Flat-head 1940-1941, V-Twin Mfg. (OEM 3608-40 & 62353-40)
- 758360** Tin finish, U, UL & ULH Flat-head 1942-1948, V-Twin Mfg. (OEM 3608-42 & 62353-42)

782996 Flexible black cotton braided as stock on WLC, 45CI 1942-1949, Samwel (OEM 3607-41B)

Tank-to-carburetor lines for OHV models

- 758361** Tin finish, E & EL Knucklehead 1936-1938, V-Twin Mfg. (OEM 3607-36)
- 758362** Tin finish, E & EL Knucklehead 1939, V-Twin Mfg. (OEM 3607-39)
- 758364** Tin finish, E, EL, F, FL & FLH Knucklehead 1942-1948 & Panhead 1948-1949, V-Twin Mfg. (OEM 3607-41A & 62352-41)
- 735119** **NEW** Chrome, E, EL, F, FL & FLH Knucklehead 1942-1948 & Panhead 1948-1949, V-Twin Mfg. (OEM 3607-41A & 62352-41)
- 735140** **NEW** Zinc, Panhead 1950-1965, includes nuts and seals, V-Twin Mfg. (OEM 62352-50)
- 735139** **NEW** Chrome, Panhead 1950-1965, includes nuts and seals, V-Twin Mfg. (OEM 62352-50)
- 723139** **NEW** White plated fuel line nut, set of 2 fuel line nuts and 2 seals, Colony (OEM 62360-50 & 62361-51)
- 758366** White plated fuel line nut, set of 2, V-Twin Mfg. (OEM 62361-50)
- 758367** Fuel line seal, set of 2, V-Twin Mfg. (OEM 62360-50)
- 758368** Fuel line seal, dealer 10-pack, Genuine James (OEM 62360-50)

Tank-to-tank lines

- 758353** Tin finish, crossover line, fits all Big Twin 1940-1947, V-Twin Mfg. (OEM 62355-40)
- 758354** Tin finish, crossover line, 1948 style, fits Big Twin 1948-1965, V-Twin Mfg. (OEM 62355-48)
- 012251** Chrome, crossover line, 1948 style, fits Big Twin 1948-1965, Genuine Zodiac (OEM 62355-48)
- 758355** Tin finish, crossover line, 1949-1956 style, fits Big Twin 1948-1965, V-Twin Mfg. (OEM 62355-48A)

Fits XL & XR Sportster 1996-2022, Dyna 1996-2017, Road King 1996 to present, Freewheeler 2015 to present and Softail 1996 to present (except Fat Bob, Deuce and FXSTSE 2007-2008)

757903 RSD Sector fuel tank cap, black



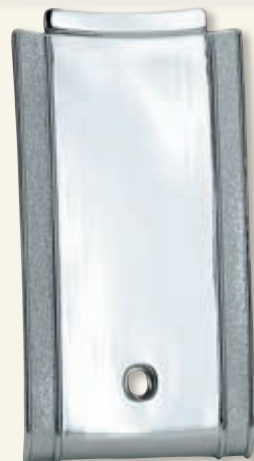
CHROME DASH PANEL EXTENSION FOR FAT BOY



Stock replacement dash panel extension.

Fits FLFB5 Fat Boy 2021 to present

736938 Dash panel extension (OEM 61400581)



DASH PANEL EXTENSION



Chrome plated cast aluminum dash panel extension that fills the gap between your dash and seat. Fits FXWG 1983-1986 and Softail 1984-1999, as well as most models with aftermarket Fat Bob style flat side tank.

301957 Chrome aluminum tank panel, Genuine Zodiac
736935 **NEW** Chrome aluminum tank panel, V-Twin Mfg.

Screw-in style gas caps

Late 2018-up style Softail, Dyna, Sportster

Late 2018-up style Touring & Trike

In 2018 "The Factory" made a change in the gas cap bung and thread pitch. This change also applies to OEM replacement fuel tanks for earlier models supplied from early 2018 onwards. Gas caps listed as for "through early 2018" do NOT fit fuel tanks that are marked R090 or R091 as shown in the picture.



301698



789496

(90cm) long, has a hex nut on the transmission side and a male fitting at the speedometer end. Works with OEM speedometers only, most aftermarket and replica speedometers are for use with a 5/8" speedometer nut. To use an OEM style cable like these on an aftermarket speedo you must order ZPN 735122 cable adapter nut.

789280 Speedometer cable, white plated casing (OEM 11132-36, 67026-36A)

789281 Speedometer cable, zinc white plated casing (OEM 11132-36, 67026-36A)

735122 Cable adapter nut



JAGG HYPERFLOW LIFETIME OIL FILTERS



These extremely high-performing oil filters, originally designed for race vehicles, are engineered with Jagg's HyperFlow Technology to balance performance and flow for your motorcycle, just like a Jagg oil cooler. High flow volume, low pressure drop, absolute filtration, and a strong rare-earth magnet combine to deliver unmatched performance and protection. Precision CNC-machined billet aluminum body offers a knurled non-slip grip surface and a hex boss for easy removal.

Features a cleanable and reusable filter element with 30 micron absolute filtration and built-in rare earth magnet. Jagg claims a 8-10x greater oil flow as with OEM filters. Fits most Harley-Davidson, including Twin Cam and Milwaukee Eight, and other applications with a 3/4-16 filter mount.

740099 Jagg HyperFlow Lifetime oil filter, titanium anodized

740227 **NEW** Jagg HyperFlow Lifetime oil filter, black anodized

LATE STYLE CAST DASHES



These heavy-duty zinc die-cast dashes are duplicates of their OEM counterparts. Complete in every detail, each dash also includes the lenses, light divider and trim rubbers.

301698 Fits 4 speed FL 1968-1984, FX 1980-1986 and Softail 1984-1990, chrome, Genuine Zodiac (OEM 71241-68)

789495 Fits 4 speed FL 1968-1984, FX 1980-1986 and Softail 1984-1990, chrome, V-Twin Mfg. (OEM 71241-68)

789496 Fits 4 speed FL 1968-1984, FX 1980-1986 and Softail 1984-1990, black, V-Twin Mfg. (OEM 71241-68)

789497 Fits all Softail 1991-1995, chrome, V-Twin Mfg. (OEM 71241-91)

789498 Fits all Softail 1991-1995, black, V-Twin Mfg. (OEM 71241-91)

736939 **NEW** Fits all Softail 1996-1999, chrome, V-Twin Mfg. (OEM 71254-96)

736940 **NEW** Fits all Softail 1996-1999, black, V-Twin Mfg. (OEM 71254-96)

Replacement parts

701829 Dash panel lens kit, V-Twin Mfg.

701919 Ignition switch decal plate, V-Twin Mfg. (OEM 71300-79)

735089 **NEW** Rubber trim rubbers, pair, V-Twin Mfg. (OEM 71295-68)



INSTRUMENT BEZEL KIT



Chrome trim rings are formed to the gauge shapes and feature an adhesive backing for permanent installation. This 4-piece kit includes two 4" and two 2" gauge bezels.

Fits Street Glide 2014-2023 and Electra Glide, Ultra Limited and Tri-Glide 2014 to present

735189 Chrome gauge bezel kit (OEM 61400451)



INNER FAIRING TRIM KIT FOR ROAD GLIDE



Chrome kit contains 6 trims that are formed exactly to the stock gauge, radio and speakers shapes. They feature an adhesive backing for permanent installation.

Fits FLTRXSE 2018-2022, FLTRX & FLTRXS 2015-2023, FLTRU 2016-2019, FLTRK 2020 to present and FLTRT 2023 to present

735190 Chrome inner fairing trim kit (OEM 61400296)



2014-UP BATWING FAIRING PARTS



Great for crash damage repairs, these parts come in raw black ABS. Require painting to get a perfect finish.

Fits FLH 2021, FLHTCU, FLHTCUL, FLHTCUTC, FLHTCUTG & FLHTCUTGSE, FLHTK, FLHTKL & FLHTKSE and FLHX 2014 to present, FLHX 2014-2023, FLHXSE 2014-2022 and FLHXST 2022-2023

770860 Inner fairing, black ABS (OEM 57000064)

770861 Outer fairing, gloss black ABS (OEM 57000383)

770799 Speaker enclosures, left and right, whiteABS (OEM 57000172&5700175)

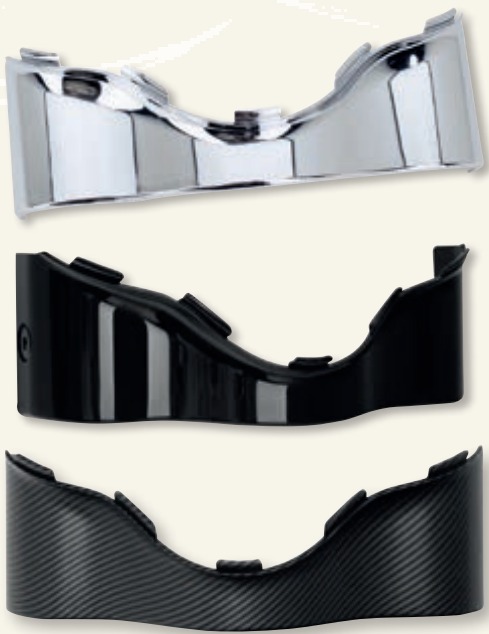


OEM STYLE SPEEDO CABLES FOR BIG TWIN 1936-1961



Replicas from the OEM transmission driven speedo drive cables as on EL 1936-1940, UL 1938-1948 and FL 1941-1961. Cable is 35 1/2"





2014-UP BATWING OUTER FAIRING SKIRT



Stock replacement skirt.

Fits Batwing fairing on Electra Glide 2014 to present, Ultra Limited 2014 to present, Tri Glide Ultra Classic 2014 to present, FLH Revival 2021 and 103, 107, 110 & 117CI Street Glide 2014-2023

770744 Black carbon look (OEM 57000017, 57100227)

770745 Gloss black (OEM 57100227)

724357 Gloss black, V-Twin Mfg. (OEM 57100227)

724356 Chrome, V-Twin Mfg. (OEM 57000017)



2015-UP ROAD GLIDE FAIRING PARTS



Perfect for crash repairs these parts for Road Glide come in black ABS. However, a perfect finish requires painting. It is strongly recommended to test fit before painting.

Fits FLTRK & FLTRKSE 2020-2024, FLTRU & FLTRUSE 2016-2019, FLTRT 2023-2024, FLTRX & FLTRXS 2015-2023, FLTRXSE 2018-2022, FLTRXST 2022-2023 and FLTRXP 2024

770864 Inner and outer fairing, gloss black ABS (OEM 57000504 & 57000305)

770862 Set of left and right speaker housings, black ABS (OEM 57000172 & 57000175)

770863 Set of left and right glove boxes, black ABS (OEM 57100107 & 57100109)

770797 Set of left and right fairing vents/headlight bezels, black ABS (OEM 61400173 & 61400174)



MEDIA DOOR FOR BATWING FAIRING 2014-UP



Stock replacement black ABS plastic media door.

Fits Batwing fairing on Electra Glide 2014 to present, Ultra Limited 2014 to present, Tri Glide Ultra Classic 2014 to present, FLH Revival 2021 and 103, 107, 110 & 117CI Street Glide 2014-2023

770792 Gloss black (OEM 76000409DH)



SUPER STRONG BATWING SUPPORT BRACKETS



These super strong batwing brackets, are made of injection molded high impact nylon and have a structural ribbed design for added strength, making them stronger than OEM or even extreme duty metal brackets. The use of nylon also makes them lighter than stock brackets. These brackets help reduce fairing vibration; even with bigger and/or, heavier aftermarket speakers and amplifiers. Sold in pairs for left and right.

Fits style Batwing fairing 1996-2013

770790 Batwing support bracket set (OEM 58938-96C left & 58939-96C right)



STREET PERFORMANCE HANDLEBAR FAIRING



This sport inspired handlebar fairing was originally designed for Milwaukee Eight Softail and adds sleek looks to your bike. Apart from the added looks it also reduces wind pressure on your chest when riding. Fairing body is made from black ABS, and comes in a gloss black painted finish. Fairing body comes complete with a tinted windscreen and screws to attach the screen to the body. Model specific mounting bracket kit must be custom made or ordered separately.

Fits with 5 3/4" (14.6cm) headlight

770791 Universal fairing screen and body without mounting material, black



CARBON LOOK FAIRING LOWERS WITH GLOVE BOXES

NEW

Fairing lowers made from vacuum-formed ABS with a matt or gloss carbon look finish. They not only help to protect the rider from the elements but also direct cooling air to the engine. Lower comes with glove boxes and attach straight to the original fitted "straight top" engine guard with the included mounting hardware. Does not fit with Mustache or Chopped engine guards.

Fits Electra Glide, Street Glide 1983-2013, Road King and Trike 2009-2013

770734 Fairing lower kit, matt carbon fiber look (OEM 58830-88)

770735 Fairing lower kit, gloss carbon fiber look (OEM 58830-88)

Fits air/oil cooled 96, 103, 107 & 114CI 2014 to present and 117CI Electra Glide, Street Glide, Road King and Trike 2018-2023

770736 Fairing lower kit, matt carbon fiber look (OEM 57100258)

770737 Fairing lower kit, gloss carbon fiber look (OEM 57100258)



ROLAND SANDS L8ER FAIRING



As seen on numerous custom builds over the years this is a new take on the fairing movement in the performance V-Twin market. No more cumbersome fork mounting, the L8er Fairing Kit is designed to mount directly to your RSD Sector riser system, or any 1.25" T bar or riser. Mounting is easy with provided adjustable back plate and 1.25" precision machined billet aluminum bar clamps. The Sector fairing provides just enough wind blockage to deflect the breeze at high speeds while adding the right aesthetic flavor.

Features:

- Made from fiberglass with fully gel coated inner and outer
- Pre-installed rivet-nuts
- Sheet metal stamped back mounting plate with adjustable mounting locations
- 1 1/4" (32mm) bar clamps machined from 6061 Aluminum
- All hardware included
- Designed and made in Long Beach California, USA

757918 RSD L8er handlebar fairing



MANIFOLD WRENCHES FOR VINTAGE MODELS



European made faithful copies from the OEM tools.

734968 Manifold wrench, IOE models 1923-1929, 45CI models 1929-1973 (OEM 94537-26)

734969 Manifold wrench, WLDR 1937-1942, Sidevalve Big Twin 1930-1948 and Knucklehead 1936-1939 (OEM 94538-30)



SLOTTED NUT TOOL



European made T-handle tool to fit slotted crankcase nuts (451-09 and 3805-39) for single and twin models 1909-1930 including JD, A, B, C singles and 45CI 1929-1973. Also used for tripper bolt nuts for 45CI models 1933-1973.

734964 T-handle tool to remove and install OEM 451-09 and 3805-39 slotted nuts



HEADLAMP VISOR FOR DYNA & SPORTSTER

NEW

No matter if you call it a visor, mask, shroud, or mini fairing, this one adds some racy style to the front of your bike. It is bolt-on for the listed models but can be custom fitted to other models with 39mm forks and one single instrument above a 5 3/4" top mount headlight.

Fits FXR, FXRS & FXRP 1982-1994, FXD & FXDL 1995-2005 and Sportster Hugger, Iron, Low, Sport, Standard and Super Low 1995-2022

770778 Shroud for 5 3/4" headlight, Vivid Black (OEM 68129-97, 68129-98DH)

770779 Shroud, puts your 5 3/4" headlight behind bars



AUTOSOL DYNAMIC CERAMIC SHIELD LIQUID WAX



The product coats the vehicle paint with an effective protective shield against weather and environmental influences. It protects both new paintwork and old, reconditioned paintwork. The superior performance of synthetic SiO components and natural wax gives the paint extremely strong hydrophobic, beading and water-repellent properties as well as brilliant shine, impressive color depth and smoothness.

770381 Autosol Dynamic Ceramic Shield wax, 250 ml squeeze bottle

770380 Autosol Dynamic Ceramic Shield wax, 250 ml squeeze bottle, 6-pack



HEADBOLT WRENCH FOR SIDEVALVE MODELS



Faithful reproduction of the OEM knurled 9/16" 12-point head bolt tool for Flathead.

734966 Headbolt wrench for 45CI 1929-1973 and VL & UL Big Twin 1930-1948 (OEM 12047-30)



S&S ENGINE STANDS

Perfect for engine repair or as a show stand. These powder coated steel stands feature laser-cut S&S logos. Available for use with both OEM and aftermarket engines and engine cases from 1936 to present.

750876 For use with single cam Big Twin 1936-1999, S&S P-series, S&S SH series and S&S V-series

750877 For use with Twin Cam "A" 1999-2017 and S&S T-series

750878 For use with Twin Cam "B" (Balanced) 2000-2006

784996 For use with Milwaukee Eight 2017 to present



PILOT SHAFT, VALVE GUIDE DRIVER AND DRIFTER COMBINATION TOOL



European made valve guide driver or drift tool and pilot shaft for valve seat reamers. The driver is, just as the OEM tool from those days, hardened.

Works for A, B & C singles 1926-1934 and all 45CI V-Twin 1929-1973

734970 Pilot shaft and valve guide driver combi tool (OEM 12621-26/96532-26)



CLUTCH HUB HOLDING TOOL



The third hand you are always missing when working on the clutch.

734965 Clutch hub holding tool, 45CI 1941-1973 and Big Twin 1941-1984



1958-2000 PINION BEARING RACE TOOL



Pinion bearing race tool is used to remove and install the outer race.

Fits Panhead 1958-1965, Shovelhead 1966-1984 and Evolution Big Twin 1984-2000

736931 Pinion bearing race tool (OEM 39958)



CYLINDER BASE NUT WRENCHES



Installation and removal of cylinder base nuts can be a pain when you try this with standard inch size tools. These special shaped wrenches are replicas from the OEM special tools and a professional solution for the problem.

Fits UL Flathead 1937-1948, Panhead 1941-1965, Shovelhead 1966-1984, 45CI Solo & Servicar 1929-1973, K models 1952-19556 and Sportster 1957-1985

734971 Cylinder base nut wrench, 9/16" on both ends, forged as OEM, Samwel (OEM 12650-29, 94589-29A)

797021 Cylinder base nut wrench, 9/16" on both ends, V-Twin Mfg. (OEM 12650-29, 94589-29)

Fits Knucklehead 1936-1940, FL Panhead 1941-1965 and Shovelhead 1966-1984

795208 Cylinder base nut wrench, 5/8" on both ends, V-Twin Mfg. (OEM 12050-30, 94585-30)



OEM REPLICA SPOKE WRENCH



Faithfull and hardened copy of the classic OEM Harley spoke wrench.

734967 Replica spoke wrench (OEM 12033-39/94681-39)



OIL PRESSURE SWITCHES



Harley-Davidson owners demand high quality, reliable parts that perform. Therefore Zodiac offers a complete program of precision calibrated oil pressure switches covering Harley-Davidson from 1936 to present. All our oil pressure switches are designed and tested to ensure consistently accurate pressure thresholds. We suggest that oil pressure switches be replaced with each engine overhaul or rebuild.

Fits 2002-2017 V-Rod and 1999-2017 Twin Cam with oil pressure warning light only (OEM 26561-99)

789772 V-Twin Mfg.

747583 Cycle Pro



ALUMINUM STEERING DAMPERS BY HYPERPRO



More and more Harley riders like to improve the performance of their motorcycle and ride them at higher speeds. But Harley-Davidson's are not build for high speed use. They want to break out in long, fast corners and start "Tail Snaking" when driving at high speed. Usually this is caused by instability of the steering. The use of the Hyperpro steering damper will drastically improve the stability and handling of your motorcycle. Highly recommended for all High Performance motorcycles and mandatory for racing. Hyperpro steering dampers are proudly made in the Netherlands and feature 22-step adjustable linear damping. Steering dampers and brackets are sold separately. Ready to install mounting bracket

kits are available for a limited number of models. For other applications it is strongly advised to have the steering damper installed by a qualified mechanic using the individual frame-fork- and damper tube clamps. A 140mm stroke steering damper works in most custom fitments.

Frame clamps

748592 Frame clamp 1.39" (35.3mm), gold

748593 Frame clamp 1.39" (35.3mm), black

Fork clamps

748591 Fork clamp 59mm, black



41MM FORK SEAL AND BUSHING INSTALLATION TOOL



Designed for easy installation of the fork slider bushing and oil seals on 1984-2017 41mm forks. With the fork tube installed in the lower fork as a guide for the 2 kilos weighing tool you can use one side of the tool to install the fork slider bushing exactly on depth, the other side to install the fork seal. Use of the tool prevents for damage and guarantees a perfect square installation of both seals and bushings.

351144 41mm fork seal and bushing installation tool, Genuine Zodiac (OEM 34634)



735138 41mm fork seal and bushing installation tool, V-Twin Mfg. (OEM 34634)